



IH 30 Improvement Project in Texarkana - Bowie County



Project Objective and Goal

- The objective of the project is to improve mobility and enhance safety along this section of the IH 30 corridor.

Project Details

- **Project Limits:** From 0.6 mile west of FM 989 to Arkansas State Line
- **Length:** Approximately 6.0 miles
- **NEPA Documentation:** Categorical Exclusions (CE) approved in 2006
- **Current Construction Cost:** \$88.9 million
- **Funding sources:** Category 4, 2 and 12

Proposed IH 30 Project Improvements

IH 30 provides an important east-west connection for travel and trade. As the interstate system ages, and population and trade increases in Texas, it is necessary to improve mobility and safety along this corridor.

This project consists of widening of IH 30 from 0.6 mile West of FM 989 to the Arkansas State Line. The approximate 6 mile project includes:

- Widening IH 30 from four to six 12-foot wide travel lanes with 10-foot wide inside and outside shoulders with continuous concrete median barrier.
- Replacing the existing mainlane bridges at KCS Railroad.
- Replace existing asphalt pavement with continuously reinforced concrete pavement.

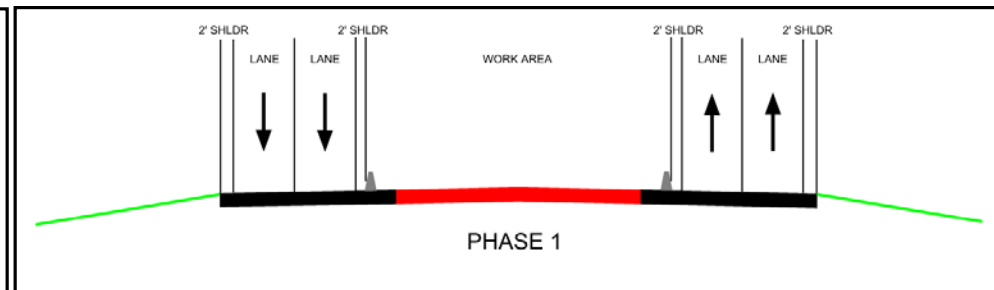
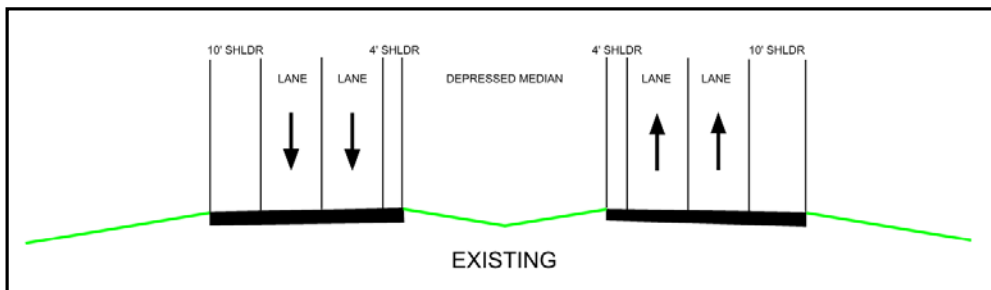
Have Questions?

Contact: Tommy Bruce at
I-30Texarkana@txdot.gov
or (903) 838-8574

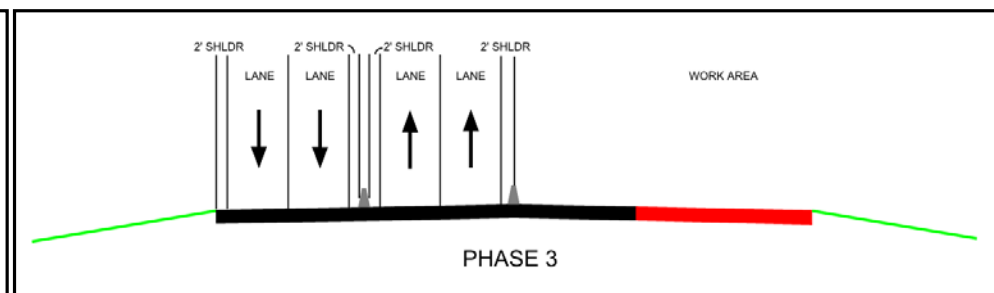
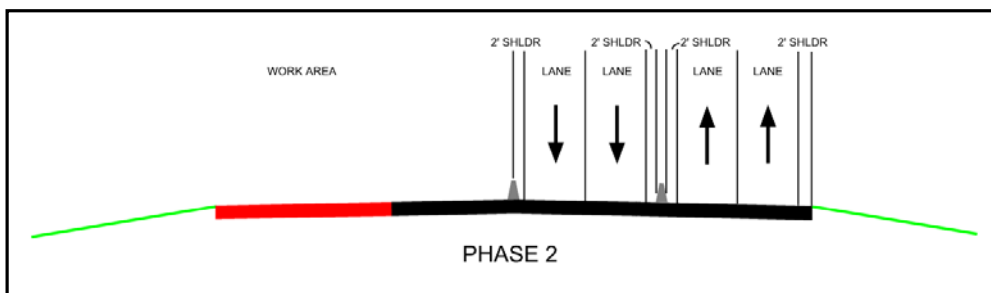


IH 30 Improvement Project in Texarkana - Bowie County

IH 30 – From 0.6 mile West of FM 989 to Arkansas State Line



IH 30 – From 0.6 mile West of FM 989 to Arkansas State Line



IH 30 – From 0.6 mile West of FM 989 to Arkansas State Line

