



Script:

Welcome to the Atlanta District Rural Transportation Improvement Program Virtual Public Meeting for the 2027-2030 program. My name is Adrian Walton and I'm the Advanced Planning Engineer. We are here today to go over the projects to be included in the upcoming 2027-2030 Rural TIP.

 Connecting you with Texas.

Agenda

01 Safety Minute	05 How Projects are Selected for the Rural TIP
02 Atlanta District and its boundaries	06 Projects by County
03 The Rural Transportation Improvement Program (TIP)	07 Funding
04 How the Rural TIP Impacts You	08 Next Steps



2027 – 2030 Rural TIP

2

Script:

Today we’ll go over which counties make up the Atlanta District, explain what the Rural TIP is and why is it important for you to participate in this virtual public meeting. Then we’ll explain how the projects included in the program are selected and classified to make the most of the program.

Once we’ve covered all of this, you’ll have the opportunity to review all the projects the Atlanta District has included in the **2027–2030** program. Both the big projects and the small supporting projects.

We will also go over funding, answering the question “where does the money to pay for these projects come from? And how it get distributed?”. Finally, we’ll outline all the options you have for commenting on these projects and their priority.



Script:

Drive like a Texan is all about saving lives. It's a reminder for everyone in Texas to treat each other with a little bit of the kindness, respect, and neighborly spirit we're famous for, especially on the road. By showing courtesy and care behind the wheel the same way we would in person, we can make our roads safer for all.

Kind

It's that simple. Treat others the way you want to be treated. Say thanks by giving a small wave, or just a friendly nod.

Courteous

Courtesy isn't just about being polite in person. Show respect by letting others merge, giving plenty of space, and practicing patience on the road. Small actions save lives.

Safe

The most important part of any journey is arriving safely. Not only do you keep yourself safe, but you also help protect every driver, passenger, biker, and pedestrian sharing the road.

District Boundaries



ATLANTA DISTRICT

2027 – 2030 Rural TIP



4

Script:

The Atlanta District includes all the counties shown on the map which include *Bowie, Camp, Cass, Harrison, Marion, Morris, Panola, Titus, and Upshur* counties. Projects included in the **2027–2030** Rural TIP are located in each of the Atlanta District counties.

Rural Transportation Improvement Program (TIP)

THE RURAL TIP
 includes both grouped projects and individually listed projects that include added-capacity projects and regionally significant projects to be funded outside of MPO boundary, and within a TxDOT district during the next four years, including those eligible for federal funding.

It can include projects for :

A Rural TIP project is anticipated to be funded within the next four years.

It shows regional agreement (community-region-state) on the need of a project.

2027 – 2030 Rural TIP

5


Script:

The Rural Transportation Improvement Program is a list of local projects to be funded in a TxDOT District over the next 4 years. This means that all projects included in the list are expected to be underway within 4 years following its approval.

The program includes multimodal projects such as bicycle and pedestrian facilities, transit services, and freight projects. Projects may also include the preliminary studies used to define these types of projects.

Rural TIP is meant to show regional agreement on the need and priority of a transportation project, so all parties involved can be sure they are making the best investment for the community. It is also expected to be consistent with the projects and objectives included in the regional Long Range Transportation Plan to ensure that all agencies are working towards the same goal.

The Rural TIP is a part of the Statewide Transportation Improvement Program, or (STIP). As a result of the program rules being established by Federal law, no project can receive federal funding unless it is listed in the Rural Transportation Improvement Program!

 Connecting you with Texas.

How the Rural TIP Impacts You

The Rural TIP process includes opportunities to provide input on the priority of major projects that are listed on it.

Local and small projects around your community dealing with safety and access also get funding through the Rural TIP, for example:


- Road expansions
- Sidewalks
- Bike lanes
- Pavement repair or maintenance
- New or improved signals
- Turning lanes

By participating today, you are providing input in 178 projects!

2027 – 2030 Rural TIP

**You know
your
community
best!**

Tell us what
project
should come
first and why



6

Script:

It is important for you to participate in the Rural TIP because funding secured by this process is intended to address your communities’ most immediate needs. By providing comments on the priority of the projects included, you are helping us identify regional priorities.

By reviewing the entire program in a single meeting, you are: 1) having a regional impact, 2) helping us be more intentional with your money, and 3) ensuring that we are investing where we should.

Texas Department of Transportation Connecting you with Texas.

How Projects are Selected for the Rural TIP

Projects are identified and selected by evaluating existing and future needs based on:

current conditions and projections, statewide and regional plans, public input regarding transportation priorities

^ This would be you, right now!

For Example:



2027 - 2030 Rural TIP 7

Script:

Rural Transportation Organizations, Metropolitan Planning Organizations and local governments are responsible for selecting projects within their boundaries. TxDOT, through the District office, is responsible for selecting projects relating to the state transportation system and national roadways. This includes Interstates, State and US Highways but most importantly this can also include the Farm-to-Market roads you use every day. The projects you will review today should respond to local needs!

It is our responsibility to provide you with the opportunity to provide input on which projects should be advanced.

Rural TIP Bowie County (Individual Listed Project)

Map ID	CSJ	Highway	County	Limits from	Limits to	Project Description	Total Project Cost	TIP Year
1	0610-06-098	IH 30	Bowie	1.0 MI W of SS 86	FM 31	CONSTRUCT 2-LANE DISCONTINUOUS FRONTAGE ROADS ON NEW LOCATION	\$20,287,848	2027

Script:

This table shows the details of the individually listed project included in the **2027–2030** Rural TIP for Bowie County.

 Connecting you with Texas.

Rural TIP Bowie County (Individual Listed Project)

1) 0610-06-098



2027 – 2030 Rural TIP  9

Script:

The map shows the individual listed project included in the **2027 – 2030** Rural TIP for Bowie County.

Rural TIP Bowie County (Group Projects)

CSJ	Highway	County	Limits from	Limits to	Project Description	Total Project Cost	TIP Year
2879-01-011	FM 1297	Bowie	FM 559	FM 2878	Construct shared use path along north side of FM 1297	\$2,588,020	2027
2879-01-011	FM 1297	Bowie	FM 559	FM 2878	Construct shared use path along north side of FM 1297	\$2,588,020	2027
2879-01-011	FM 1297	Bowie	FM 559	FM 2878	Construct shared use path along north side of FM 1297	\$2,588,020	2027
1570-02-026	FM 2735	Bowie	US 259	FM 2735 N	Preformed Rumble Strips and Pavement Markings	\$101,456	2027
0085-03-020	FM 2735	Bowie	FM 2735N	US 82	Preformed Rumble Strips and Pavement Markings	\$274,452	2027
1020-01-068	FM 559	Bowie	IH 30	Robison Road	Resurface Existing 4-lane Roadway	\$2,400,000	2027
0610-07-124	IH 30	Bowie	Cowhorn Creek Road	.	Perform Bridge Maintenance	\$936,154	2027
0062-01-045	SH 8	Bowie	US 67	Cass C/L	FY 27 District Seal Coat	\$441,288	2027
2050-03-012	SL 151	Bowie	At FM 3527	.	Perform Bridge Maintenance	\$226,518	2027
2050-03-013	SL 151	Bowie	At FM 3527	.	Perform Bridge Maintenance	\$248,718	2027

2027 – 2030 Rural TIP

10

Script:

This table shows Grouped Projects included in the **2027–2030** Rural TIP for Bowie County.

Rural TIP Bowie County (Group Projects-Continued)

CSJ	Highway	County	Limits from	Limits to	Project Description	Total Project Cost	TIP Year
0085-02-053	US 259	Bowie	2.3 Mi S of FM 561	Morris C/L	Rehabilitate existing 2-lane highway	\$7,660,750	2027
0085-04-052	US 259	Bowie	Oklahoma S/L	0.3 Mi S of FM 44	FY 27 District Seal Coat	\$908,838	2027
1215-02-016	FM 1840	Bowie	US 82	IH 30	FY 28 District Seal Coat	\$462,840	2028
1231-01-074	FM 989	Bowie	US 59	FM 2516	FY 28 District Seal Coat	\$221,840	2028
2527-01-017	FM 990	Bowie	FM 1840	FM 561	FY 28 District Seal Coat	\$663,800	2028
1213-01-015	FM 990	Bowie	FM 561	US 67	FY 28 District Seal Coat	\$189,680	2028
1215-01-024	FM 992	Bowie	10.3 Mi N of US 82	US 82	FY 28 District Seal Coat	\$568,800	2028
0610-06-098	IH 30	Bowie	1.0 Mi W of SS 86	SS 86	Construct 2-lane discontinuous frontage roads on new location	\$14,560,000	2028
0610-06-098	IH 30	Bowie	1.0 Mi W of SS 86	SS 86	Construct 2-lane discontinuous frontage roads on new location	\$14,560,000	2028
0010-13-105	US 67	Bowie	FM 991E	1.46 Mi E of FM 991W	Rehabilitate and resurface existing 2-lane roadway	\$8,722,711	2028

2027 – 2030 Rural TIP

11

Script:

This table shows additional Grouped Projects included in the **2027–2030** Rural TIP for Bowie County.

Connecting you with Texas.

Rural TIP Bowie County (Group Projects-Continued)

CSJ	Highway	County	Limits from	Limits to	Project Description	Total Project Cost	TIP Year
0010-11-076	US 67	Bowie	Cass C/L	0.8 Mi W of SH 8	FY 28 District Seal Coat	\$2,228,040	2028
0217-02-037	US 71	Bowie	SL 14 (Texas Blvd)	US 67 (7th Street)	Rehabilitate existing 4-lane divided highway	\$18,642,426	2028
0217-02-037	US 71	Bowie	SL 14 (Texas Blvd)	US 67 (7th Street)	Rehabilitate existing 4-lane divided highway	\$18,642,426	2028
0217-02-037	US 71	Bowie	SL 14 (Texas Blvd)	US 67 (7th Street)	Rehabilitate existing 4-lane divided highway	\$18,642,426	2028
0217-02-037	US 71	Bowie	SL 14 (Texas Blvd)	US 67 (7th Street)	Rehabilitate existing 4-lane divided highway	\$18,642,426	2028
0919-00-089	Various	Bowie	Various locations	Various locations	FY 27 District Seal Coat Pavement Markings	\$3,000,000	2028
1215-02-017	FM 1840	Bowie	IH 30	SH 98	FY 29 District Seal Coat	\$159,095	2029
0330-01-040	FM 1840	Bowie	SH 98	SH 8	FY 29 District Seal Coat	\$267,309	2029
2050-01-026	FM 2148	Bowie	IH 30	US 67	FY 29 District Seal Coat	\$224,152	2029
1987-01-038	FM 2149	Bowie	SH 8	US 67	Safety Treat Fixed Objects	\$1,757,344	2029

2027 – 2030 Rural TIP 12

Script:

This table shows additional Grouped Projects included in the **2027–2030** Rural TIP for Bowie County.

Rural TIP Bowie County (Group Projects-Continued)

CSJ	Highway	County	Limits from	Limits to	Project Description	Total Project Cost	TIP Year
0330-03-034	FM 44	Bowie	FM 992	IH 30	FY 29 District Seal Coat	\$448,184	2029
0610-07-125	IH 30	Bowie	At IH 30	.	Perform Bridge Maintenance	\$1,500,000	2029
0218-02-056	IH 369	Bowie	At IH 30 EB Frontage Road	.	Perform Bridge Maintenance	\$1,500,000	2029
0217-01-038	US 59	Bowie	At the Red River Bridge (Southbound)	.	Perform bridge maintenance	\$2,400,000	2029
0010-12-078	US 67	Bowie	At Big Creek	.	Replace bridge and approaches	\$2,868,500	2029
0919-00-087	Various	Bowie	Various locations	Various locations	FY 2028 District Seal Coat Pavement Markings	\$3,000,000	2029
0010-11-075	US 67	Bowie	At Sulphur River	.	Replace bridge and approaches	\$7,875,600	2030
0046-06-081	US 82	Bowie	At FM 2148 Intersection	.	Widen to add turn lanes	\$4,094,225	2030

2027 – 2030 Rural TIP

13

Script:

This table shows additional Grouped Projects included in the **2027–2030** Rural TIP for Bowie County.

Rural TIP Bowie County (Group Projects-Continued)

CSJ	Highway	County	Limits from	Limits to	Project Description	Total Project Cost	TIP Year
0010-11-075	US 67	Bowie	At Sulphur River	-	Replace bridge and approaches	\$7,875,600	2030
0046-06-081	US 82	Bowie	At FM 2148 Intersection	-	Widen to add turn lanes	\$4,094,225	2030



Script:

This table completes the list of Grouped Projects included in the **2027–2030** Rural TIP for Bowie County.

Rural TIP Camp County (Group Projects)

CSJ	Highway	County	Limits from	Limits to	Project Description	Total Project Cost	TIP Year
1968-01-012	FM 2254	Camp	FM 993	FM 557	FY 27 District Seal Coat	\$298,836	2027
0083-08-061	SH 11	Camp	0.04 Mi E of US 271	Titus C/L	FY 27 District Seal Coat	\$354,528	2027
0248-02-073	US 271	Camp	At FM 3535	.	Perform Bridge Maintenance	\$199,807	2027
0248-03-024	US 271	Camp	0.2 Miles S. of FM 3384	Upshur C/L	Rehabilitate Existing 4-Lane Highway	\$13,160,924	2028
2683-02-014	FM 1519	Camp	Franklin C/L	SH 11	FY 29 District Seal Coat	\$226,800	2029
0083-07-049	SH 11	Camp	FM 21	SL 179	FY 29 District Seal Coat	\$198,808	2029
3289-01-013	SL 179	Camp	SH 11	US 271	FY 29 District Seal Coat	\$106,680	2029

2027 – 2030 Rural TIP



15

Script:

This table shows Grouped Projects included in the **2027–2030** Rural TIP for Camp County.

Rural TIP Cass County (Group Projects)

CSJ	Highway	County	Limits from	Limits to	Project Description	Total Project Cost	TIP Year
0277-05-015	FM 250	Cass	SH 77	FM 1399	Preformed Rumble Strips and Pavement Markings	\$32,211	2027
0946-01-050	FM 250	Cass	FM 1399	FM 130	Preformed Rumble Strips and Pavement Markings	\$303,483	2027
0278-01-065	SH 77	Cass	0.3 Mi E of FM 1841	Louisiana S/L	FY 27 District Seal Coat	\$782,640	2027
0010-10-031	US 67	Cass	Bowie C/L	Morris C/L	FY 27 District Seal Coat	\$210,280	2027
0919-00-095	Various	Cass	Various locations	Various locations	FY 2026 District Seal Coat Pavement Markings	\$3,000,000	2027
0919-00-096	Various	Cass	Various locations	Various locations	Remediation of pedestrian facilities at various locations in the Atlanta District	\$1,620,000	2027
0919-00-104	Various	Cass	Various locations	Various locations	Install dynamic message signs and PTZ cameras in various locations	\$1,000,000	2027
0919-00-106	Various	Cass	Various locations	Various locations	Plant wildflowers on right of way	\$535,000	2027
0919-00-108	Various	Cass	Various	Various	Install Reflective Backplates	\$1,000,000	2027

2027 – 2030 Rural TIP

16

Script:

This table shows Grouped Projects included in the **2027–2030** Rural TIP for Cass County.

Rural TIP Cass County (Group Projects-Continued)

CSJ	Highway	County	Limits from	Limits to	Project Description	Total Project Cost	TIP Year
0919-00-112	Various	Cass	Various	Various	Analysis and summary of data gathered under Safe Streets 4 All Study	\$27,868	2027
0919-00-113	Various	Cass	Various locations	Various locations	Clean and seal bridge joints on west side of District	\$2,500,000	2027
0569-01-060	SH 43	Cass	SH 77	FM 1841	FY 28 District Seal Coat	\$535,960	2028
0277-02-058	SH 77	Cass	FM 250	1.0 Mi W of SH 8	Install safety end treatments and remove trees from right of way	\$2,150,000	2028
0062-02-028	SH 8	Cass	At SH 77 Intersection	.	Reconstruct Intersection with Concrete Paving	\$3,123,388	2028
0919-00-100	Various	Cass	Various	Various	Install Reflective Backplates	\$749,630	2028
0919-00-101	Various	Cass	Various	Various	Install Safety Lighting	\$1,152,113	2028
0919-00-102	Various	Cass	Various	Various	Install Safety Lighting	\$1,181,949	2028
0919-00-107	Various	Cass	Various locations	Various locations	Plant wildflowers on right of way	\$535,000	2028

2027 – 2030 Rural TIP

17

Script:

This table shows additional Grouped Projects included in the **2027–2030** Rural TIP for Cass County.

Rural TIP Cass County (Group Projects-Continued)

CSJ	Highway	County	Limits from	Limits to	Project Description	Total Project Cost	TIP Year
0919-00-114	Various	Cass	Various locations	Various locations	Clean and seal bridge joints on south side of District	\$2,000,000	2028
1574-02-027	FM 161	Cass	Morris C/L	FM 130	FY 29 District Seal Coat	\$371,000	2029
1216-03-018	FM 995	Cass	SH 8	SH 77	FY 29 District Seal Coat	\$618,120	2029
0569-01-062	SH 43	Cass	FM 1841	FM 125	FY 29 District Seal Coat	\$454,080	2029
0277-02-059	SH 77	Cass	Morris C/L	FM 250	FY 29 District Seal Coat	\$793,400	2029
0062-03-049	SH 8	Cass	1.0 Mi N of FM 995	FM 995	Rehabilitate existing 2-lane roadway	\$2,590,000	2029
0062-04-053	US 59	Cass	At Jim's Bayou (SB)	.	Perform Bridge Maintenance	\$600,000	2029
0062-04-054	US 59	Cass	At Jim's Bayou (NB)	.	Perform Bridge Maintenance	\$600,000	2029
0919-00-110	Various	Cass	Various	Various	Install Safety Lighting at Intersections	\$1,083,894	2029

2027 – 2030 Rural TIP

18

Script:

This table shows additional Grouped Projects included in the **2027–2030** Rural TIP for Cass County.

Rural TIP Cass County (Group Projects-Continued)

CSJ	Highway	County	Limits from	Limits to	Project Description	Total Project Cost	TIP Year
0919-00-115	Various	Cass	Various locations	Various locations	Clean and seal bridge joints on north side of District	\$2,000,000	2029
0520-03-038	SH 155	Cass	0.17 Mi S of SH 49	Marion C/L	FY 30 District Seal Coat	\$236,534	2030
0569-01-061	SH 43	Cass	At Union Pacific Railroad	.	Replace bridge and approaches	\$2,750,000	2030
0919-00-103	Various	Cass	Various locations	Various locations	Ramp Improvements	\$8,400,000	2030
0919-00-105	Various	Cass	Various locations	Various locations	FY 2029 District Seal Coat Pavement Markings	\$3,000,000	2030




Script:

This table completes the list of Grouped Projects included in the **2027–2030** Rural TIP for Cass County.

Connecting you with Texas.

Rural TIP Harrison County (Individual Listed Projects)

Map ID	CSJ	Highway	County	Limits from	Limits to	Project Description	Total Project Cost	TIP Year
1	0495-09-065	IH 20	Harrison	0.52 MI E OF US 59	0.21 MI E OF FM 31	CONSTRUCT INTERCHANGE AT NEW LOCATION US 59 RELIEF ROUTE (FUTURE IH 369) INCLUDING RAMPS AND ONE-WAY FRONTAGE ROADS	\$191,756,775	2028
2	0495-10-105	IH 30	Harrison	0.21 MI W OF FM 31	FM 31	CONSTRUCT INTERCHANGE AT NEW LOCATION US 59 RELIEF ROUTE (FUTURE IH 369) INCLUDING RAMPS AND ONE-WAY FRONTAGE ROADS	\$5,895,190	2028
3	1575-05-024	SL 390	HARRISON	0.7 MI N OF US 80	IH 20	CONSTRUCT FIRST PHASE OF ULTIMATE 4 LANE DIVIDED CONTROLLED-ACCESS ROADWAY (FUTURE IH 369) (FUTURE HURRICAN EVACUATION ROUTE)	\$306,013,134	2028

 20

2027 – 2030 Rural TIP

Script:

The table shows the details of all Individually Listed projects included in the **2027 – 2030** Rural TIP for Harrison County.

Texas Department of Transportation Connecting you with Texas.

Rural TIP Harrison County (Individual Listed Projects)

- 1) 0495-10-105
- 2) 0495-09-065
- 3) 1575-05-024

2027 – 2030 Rural TIP 21

Script:

The map shows the location of the individually listed projects included in the **2027–2030** Rural TIP for Harrison County.

Rural TIP Harrison County (Group Projects)

CSJ	Highway	County	Limits from	Limits to	Project Description	Total Project Cost	TIP Year
1575-03-019	FM 2625	Harrison	FM 968	FM 3251	FY 27 District Seal Coat	\$535,860	2027
3041-03-013	FM 3001	Harrison	At Little Cypress Bayou	.	Replace Bridge and Approaches	\$2,824,800	2027
0640-01-052	FM 31	Harrison	IH 20	FM 2625	FY 27 District Seal Coat	\$346,428	2027
0843-02-030	FM 450	Harrison	SH 154	3.58 Mi S of SH 154	FY 27 District Seal Coat	\$214,776	2027
0843-02-031	FM 450	Harrison	4.1 Mi S of SH 154	FM 449	FY 27 District Seal Coat	\$198,036	2027
0402-03-045	SH 154	Harrison	FM 2208	Little Cypress Creek	FY 27 District Seal Coat	\$265,644	2027
0402-04-037	SH 154	Harrison	Little Cypress Creek	SL 390	FY 27 District Seal Coat	\$577,800	2027
0208-02-046	SH 43	Harrison	Haggerty Creek	0.3 Mi. S. of SS 449	Widen Existing Roadway to Add Shoulders	\$14,892,168	2027
0208-02-046	SH 43	Harrison	Haggerty Creek	0.3 Mi. S. of SS 449	Widen Existing Roadway to Add Shoulders	\$14,892,168	2027
0207-05-088	SH 43	Harrison	At Potters Creek	.	Perform Bridge Maintenance	\$1,096,067	2027

2027 – 2030 Rural TIP

22

Script:

This table shows Grouped Projects included in the **2027–2030** Rural TIP for Harrison County.

Rural TIP Harrison County (Group Projects-Continued)

CSJ	Highway	County	Limits from	Limits to	Project Description	Total Project Cost	TIP Year
0062-07-098	US 59	Harrison	1.0 Mi S of FM 1997	0.1 Mi N of SL 390	Construct paved shoulders (1-4ft); increase superelevation	\$9,175,275	2027
0919-03-068	DOROUGH RD	Harrison	At Big Cypress Creek Slough	.	Replace Bridge and Approaches	\$1,134,800	2028
0640-01-053	FM 31	Harrison	FM 2625	Panola C/L	FY 28 District Seal Coat	\$133,872	2028
0640-06-045	FM 449	Harrison	Gregg C/L	FM 450	FY 28 District Seal Coat	\$394,880	2028
1895-02-014	FM 726	Harrison	FM 450	Marion C/L	FY 28 District Seal Coat	\$146,360	2028
2340-02-022	FM 9	Harrison	FM 1999	US 80	Rehabilitate Existing 2-Lane Highway	\$10,125,634	2028
2340-01-010	FM 9	Harrison	5.0 Mi N of FM 1999	FM 1999	FY 28 District Seal Coat	\$279,480	2028
0919-03-069	PETERS CHAPEL RD	Harrison	At Picnitt Creek	.	Replace Bridge and Approaches	\$781,750	2028
1575-05-029	SL 390	Harrison	0.1 Mi N of SH 43	US 80	FY 28 District Seal Coat	\$251,880	2028
0632-02-033	FM 134	Harrison	Marion C/L	FM 1793	FY 29 District Seal Coat	\$168,004	2029

2027 – 2030 Rural TIP

Script:

This table shows additional Grouped Projects included in the **2027–2030** Rural TIP for Harrison County.

Rural TIP Harrison County (Group Projects-Continued)

CSJ	Highway	County	Limits from	Limits to	Project Description	Total Project Cost	TIP Year
0843-06-020	FM 450	Harrison	1.0 Mi S of FM 1997	0.1 Mi N of SL 390	Rehabilitate and Widen (0.3 mi. to 0.7 mi. south of US 80) Existing 2-lane Highway	\$9,175,275	2029
0843-02-032	FM 450	Harrison	At Big Cypress Creek Slough	.	Safety Treat Fixed Objects	\$1,134,800	2029
0843-01-014	FM 450	Harrison	FM 2625	Panola C/L	Safety Treat Fixed Objects	\$133,872	2029
0632-04-039	FM 9	Harrison	Gregg C/L	FM 450	FY 29 District Seal Coat	\$394,880	2029
1575-05-030	SL 390	Harrison	At US 59	.	Add acceleration lanes	\$4,600,000	2029
0919-03-070	Various	Harrison	Various Locations	Various Locations	Perform surface restoration to existing frontage roads	\$1,520,000	2029
0096-09-082	US 80	Harrison	At FM 2199 intersection	.	Reconstruct intersection with concrete paving	\$4,140,000	2030
0096-09-090	US 80	Harrison	0.2 Mi E of SL 390	IH 20	FY 30 District Seal Coat	\$635,508	2030
0402-03-046	SH 154	Harrison	Marion C/L	FM 1793	FY 29 District Seal Coat	\$168,004	2029

2027 – 2030 Rural TIP

24

Script:

This table completes the list of Grouped Projects included in the **2027–2030** Rural TIP for Harrison County.

Rural TIP Marion County (Group Projects)

CSJ	Highway	County	Limits from	Limits to	Project Description	Total Project Cost	TIP Year
0138-11-034	FM 248	Marion	Cass C/L	SH 49	FY 27 District Seal Coat	\$373,824	2027
3041-02-021	FM 3001	Marion	FM 726	Harrison C/L	FY 27 District Seal Coat	\$337,644	2027
2685-01-012	FM 2683	Marion	FM 248	SH 43	FY 28 District Seal Coat	\$305,200	2028
2685-01-013	FM 2683	Marion	FM 248	SH 43	Safety Treat Fixed Objects	\$2,110,190	2028
1895-03-026	FM 726	Marion	Harrison C/L	FM 3001	FY 28 District Seal Coat	\$241,280	2028
1895-03-027	FM 726	Marion	Harrison County Line	FM 729	Construct paved shoulders (1-4ft); Safety Treat Fixed Objects	\$5,541,133	2028
1018-03-052	FM 729	Marion	Morris C/L	SH 155	FY 28 District Seal Coat	\$143,640	2028
0569-03-026	SH 43	Marion	At Big Cypress Bayou		Replace Bridge and Approaches	\$16,971,510	2028
0222-05-054	SH 49	Marion	At UPRR Crossing	DOT 794573A	Railroad Crossing Upgrades	\$750,000	2028

2027 – 2030 Rural TIP

25

Script:

This table shows Grouped Projects included in the **2027–2030** Rural TIP for Marion County.

Rural TIP Morris County (Group Projects)

CSJ	Highway	County	Limits from	Limits to	Project Description	Total Project Cost	TIP Year
0750-02-021	FM 144	Morris	SH 11	US 259	FY 27 District Seal Coat	\$428,688	2027
0750-01-027	FM 144	Morris	US 67	SL 284	Replace Bridge and Approaches	\$30,413	2027
0546-02-015	FM 71	Morris	Titus C/L	US 259	FY 27 District Seal Coat	\$162,153	2027
0083-10-045	SH 11	Morris	At Boggy Creek	.	FY 27 District Seal Coat	\$2,367,699	2027
0222-02-064	SH 49	Morris	US 259	Morris C/L	FY 27 District Seal Coat	\$5,466,514	2027
0084-01-095	US 259	Morris	US 67	SH 338	FY 27 District Seal Coat	\$591,498	2027
0085-01-052	US 259	Morris	Bowie C/L	US 67	FY 27 District Seal Coat	\$904,946	2027
0010-08-061	US 67	Morris	US 259	Titus C/L	Widen Existing Roadway to Add Shoulders	\$471,744	2027
0010-08-063	US 67	Morris	US 259	Cass C/L	Widen Existing Roadway to Add Shoulders	\$588,445	2027
0750-01-028	FM 144	Morris	US 67	SL 284	Perform Bridge Maintenance	\$1,600,000	2028

2027 – 2030 Rural TIP

26

Script:

This table shows Grouped Projects included in the **2027–2030** Rural TIP for Morris County.

Rural TIP Morris County (Group Projects-Continued)

CSJ	Highway	County	Limits from	Limits to	Project Description	Total Project Cost	TIP Year
1018-04-016	FM 729	Morris	US 259	Marion C/L	FY 28 District Seal Coat	\$372,440	2028
1574-01-019	FM 161	Morris	SH 338	Cass C/L	FY 29 District Seal Coat	\$132,080	2029



Script:

This table concludes the list of Grouped Projects included in the **2027–2030** Rural TIP for Morris County.

Rural TIP Panola County (Group Projects)

CSJ	Highway	County	Limits from	Limits to	Project Description	Total Project Cost	TIP Year
0732-01-032	FM 124	Panola	SH 149	US 79	FY 27 District Seal Coat	\$357,660	2027
0063-02-041	FM 1794	Panola	FM 2792	FM 1186	FY 27 District Seal Coat	\$220,068	2027
1894-01-024	FM 1971	Panola	SH 315	1.7 Mi N of Rusk C/L	FY 27 District Seal Coat	\$418,788	2027
1222-02-027	FM 999	Panola	FM 1971	3.7 Mi E of FM 1971	FY 27 District Seal Coat	\$162,360	2027
0462-03-051	SH 315	Panola	BU 79G	SH 149	FY 27 District Seal Coat	\$119,412	2027
0246-02-056	US 79	Panola	0.2 Mi W of SH 149	Rusk C/L	FY 27 District Seal Coat	\$1,252,080	2027
0640-02-032	FM 31	Panola	Harrison C/L	US 79	FY 28 District Seal Coat	\$254,880	2028
0731-01-059	FM 31	Panola	FM 2517	5.1 Mi S of FM 2517	FY 28 District Seal Coat	\$257,280	2028
0919-13-023	COUNTY ROAD 129	Panola	At Brushy Creek	.	Replace bridge and approaches	\$750,000	2029
2239-01-028	FM 2517	Panola	US 59	FM 31	FY 29 District Seal Coat	\$638,800	2029

2027 – 2030 Rural TIP

Script:

This table shows Grouped Projects included in the **2027–2030** Rural TIP for Panola County.

Rural TIP Panola County (Group Projects-Continued)

CSJ	Highway	County	Limits from	Limits to	Project Description	Total Project Cost	TIP Year
0731-01-060	FM 31	Panola	FM 123	FM 2517	FY 29 District Seal Coat	\$372,000	2029
0394-01-073	FM 959	Panola	SH 43	FM 1794	FY 29 District Seal Coat	\$351,360	2029
0063-04-069	US 59	Panola	FM 2517	Murvaul Creek	Rehabilitate Existing 4-lane Highway	\$5,242,917	2029
0063-05-041	US 59	Panola	Murvaul Creek	FM 999	Rehabilitate Existing 4-lane Roadway	\$3,257,083	2029
1964-01-016	FM 1970	Panola	At Brushy Creek	.	Replace bridge and approaches	\$2,264,750	2030
0394-01-068	FM 959	Panola	At BNSF Railroad	.	Replace bridge and approaches	\$2,761,400	2030



Script:

This table concludes the list of Grouped Projects included in the **2027–2030** Rural TIP for Panola County.

Rural TIP Titus County (Group Projects)

CSJ	Highway	County	Limits from	Limits to	Project Description	Total Project Cost	TIP Year
0221-09-039	BU 271E	Titus	0.16 Mi N of FM 2152	0.06 Mi N of US 67	Resurface existing 4-lane roadway	\$1,823,024	2027
1988-01-025	FM 2152	Titus	8.5 Mi N of BU 271E	BU 271E	FY 27 District Seal Coat	\$421,726	2027
2240-01-021	FM 2348	Titus	At Evans Creek	.	Perform bridge maintenance	\$746,753	2027
0083-09-038	SH 11	Titus	Camp C/L	Morris C/L	FY 27 District Seal Coat	\$352,224	2027
1384-01-032	FM 1402	Titus	At White Oak Creek	.	Replace Bridge and Approaches	\$3,432,000	2028
2240-01-022	FM 2348	Titus	SH 49	SH 11	FY 28 District Seal Coat	\$525,400	2028
3404-01-018	FM 3417	Titus	FM 127	US 271	Install safety end treatment and remove trees from the right of way	\$1,200,000	2028
0221-09-040	BU 271E	Titus	US 271N	IH 30	FY 29 District Seal Coat	\$262,400	2029
1226-01-020	FM 1000	Titus	US 67	SH 49	FY 29 District Seal Coat	\$363,320	2029
0083-09-039	SH 11	Titus	At Big Cypress Creek	.	Rehabilitate Existing Bridge	\$1,500,000	2029

2027 – 2030 Rural TIP

30

Script:

This table shows Grouped Projects included in the **2027–2030** Rural TIP for Titus County.

Rural TIP Titus County (Group Projects-Continued)

CSJ	Highway	County	Limits from	Limits to	Project Description	Total Project Cost	TIP Year
0222-01-064	SH 49	Titus	Mt Pleasant East C/L	FM 1735	Perform mill and inlay on existing 4-lane roadway	\$3,290,000	2029
0221-05-101	US 271	Titus	Red River C/L	FM 1896	FY 29 District Seal Coat	\$554,760	2029
0010-09-009	SS 185	Titus	US 67	IH 30	Widen Existing 2-lane Roadway to Add Shoulders	\$1,600,000	2030



Script:

This table concludes the list of Grouped Projects included in the **2027–2030** Rural TIP for Titus County.

Rural TIP Upshur County (Group Projects)

CSJ	Highway	County	Limits from	Limits to	Project Description	Total Project Cost	TIP Year
0640-04-015	FM 1650	Upshur	SH 154	Gregg C/L	FY 27 District Seal Coat	\$430,200	2027
0964-02-035	FM 2088	Upshur	Wood C/L	US 271	FY 27 District Seal Coat	\$694,152	2027
0640-03-032	FM 852	Upshur	FM 1002	FM 556	FY 27 District Seal Coat	\$336,384	2027
1385-01-046	SH 300	Upshur	At FM 726	.	Rehab of intersection	\$600,000	2027
0647-03-031	FM 1002	Upshur	SH 154	SH 155	FY 28 District Seal Coat	\$680,160	2028
1761-01-016	FM 1844	Upshur	US 271	Gregg C/L	FY 28 District Seal Coat	\$355,124	2028
0402-01-027	SH 154	Upshur	FM 1650	FM 726S	FY 28 District Seal Coat	\$250,056	2028
0402-02-036	SH 154	Upshur	FM 726S	0.7 Mi W of US 259	FY 28 District Seal Coat	\$241,632	2028
0520-05-052	SH 155	Upshur	5.0 Mi S of US 259	US 259	FY 28 District Seal Coat	\$725,299	2028
0520-05-055	SH 155	Upshur	5.5 Mi N of US 271	5.0 Mi S of US 259	Resurface Existing 2-lane Roadway	\$5,100,000	2028

2027 – 2030 Rural TIP

32

Script:

This table shows Grouped Projects included in the **2027–2030** Rural TIP for Upshur County.


Rural TIP Upshur County (Group Projects-Continued)

CSJ	Highway	County	Limitafrom	Limits to	Project Description	Total Project Cost	TIP Year
0647-03-032	FM 1002	Upshur	FM 852	SH 154	FY 29 District Seal Coat	\$112,800	2029
2030-01-012	FM 556	Upshur	FM 2088	FM 852	FY 29 District Seal Coat	\$421,600	2029
0096-03-081	US 80	Upshur	Little White Oak Creek	Gregg C/L	FY 29 District Seal Coat	\$474,964	2029
1018-02-021	FM 555	Upshur	SH 155	SH 154	FY 30 District Seal Coat	\$537,264	2030
0520-05-053	SH 155	Upshur	Marion C/L	US 259	FY 30 District Seal Coat	\$144,468	2030
0248-04-086	US 271	Upshur	FM 2088	Gilmer C/L	Install Continuous Turn Lane	\$6,750,000	2030



Script:

This table concludes the list of Grouped Projects included in the **2027–2030** Rural TIP for Upshur County.


 Connecting you with Texas.

Funding

The Rural TIP is a fiscally constrained list of projects that functions as a budgeting tool for our district.

Funds can come from:

- **Federal Government**
 - **Majority through** the Federal Highway and Transit Administrations
- **State**
 - **Majority through TxDOT's** Unified Transportation Program funding categories
- **Region**
- **Local**

2027 – 2030 Rural TIP  **34**

Script:

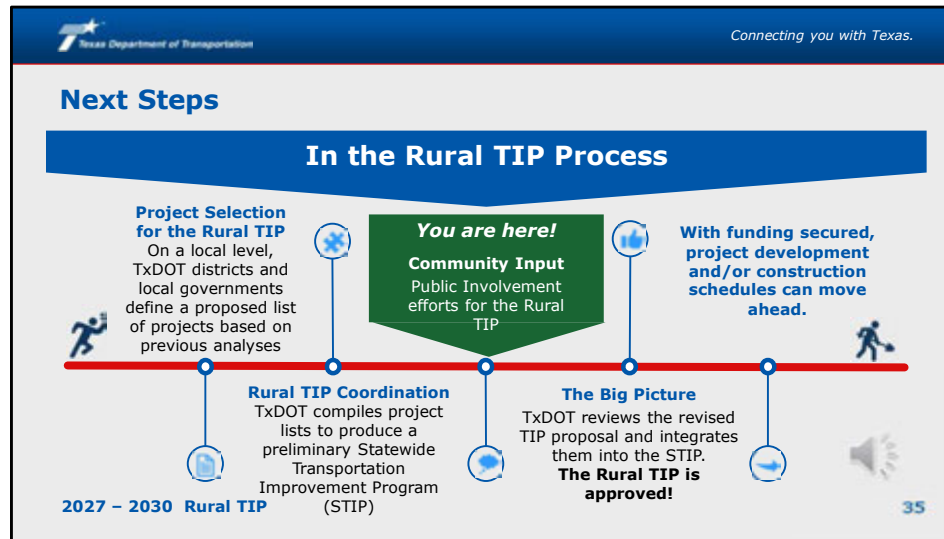
The Rural TIP functions as a budget list for the District, therefore it is fiscally constrained. Like the budget of a household, the Rural TIP has to be realistic about the amount of money available to cover all the needs. Frequently we identify more improvements than we have money to implement. This means prioritizing according to those project that are highest priority.

We've looked at the projects so now we'll explain where the money comes from. Funds can come from multiple sources:

- 1) The Federal Government. Funds are allocated through the processes established by the Federal Highway and Transit Administrations.
- 2) TxDOT, like the Federal Government also allocates budget for these projects through the Unified Transportation Program's 12 funding categories.
- 3) Region – regional entities will also allocate funding to certain transportation projects.

And finally,

4) the local governments. Once the need has been identified and the available federal monies has been defined, the Rural TIP helps local governments assess the matching funding requirements.




Script

The timeline above illustrates the Rural TIP process and where we are right now. Once comments have been collected and considered, if necessary, the Atlanta District can provide a revised Rural TIP for approval and integration into the Statewide document.

The Statewide Transportation Improvement Program (STIP) is a combination of all 24 District’s Rural TIPs, and the 24 Metropolitan Planning Organization’s TIPs, and additional Statewide Programs, for example: Texas Parks and Wildlife Program, Federal Land, Tribal Projects, Statewide Transit, etc.

The timeline above shows where in the Rural TIP process fits into this larger effort. Once the STIP is approved by the Federal government everyone’s projects are considered approved.

 Texas Department of Transportation Connecting you with Texas.


Next Steps (Continued)

How to provide comments:

- 1. Please fill out a comment card today.**
- 2. Mail a comment to:**

Texas Department of Transportation
Adrian Walton District, Attn: Rural TIP
701 E Main St., Atlanta, TX 75551
- 3. Or email a comment to:**

Adrian.Walton@txdot.gov, Attention: Rural TIP

Remember to submit your comments by **05/18/2026** to be included
in the official summary of this meeting. 

2027 – 2030 Rural TIP **36**

Script:

Now that you are familiar with the RTIP Program and process, we want to hear what you think. Please fill out a comment card.

You can also email in your comments to Adrian Walton, Atlanta District Planning Engineer at: Adrian.Walton@txdot.gov

Comments must be postmarked or otherwise received by May 18, 2026. Please make sure to send your comments before that date.

If after today, you would like more information or have any other questions feel free to reach out to us.

You can also share our website link with your friends or family! Just remind them to send comments by Monday, May 18, 2026.