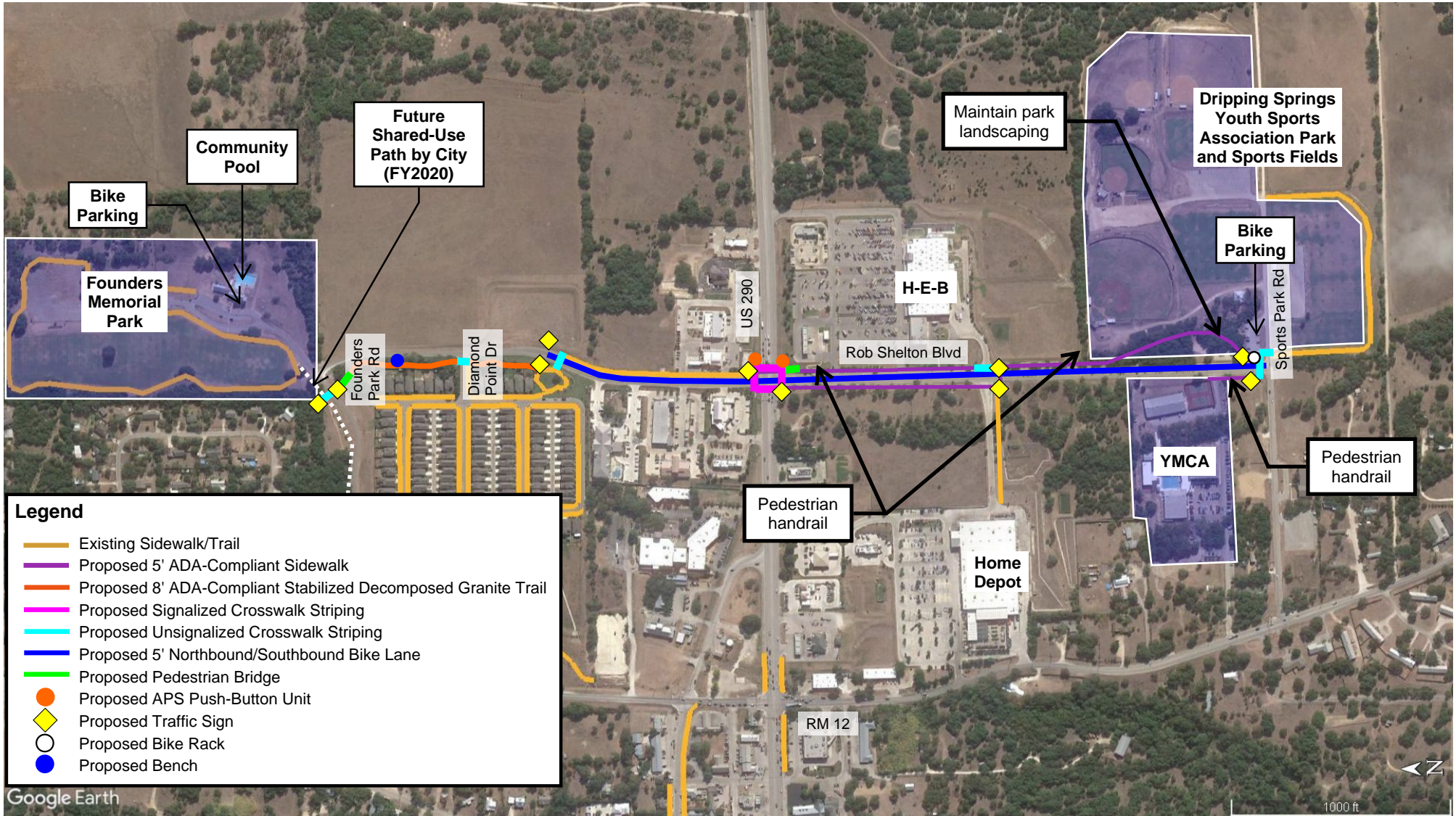


City of Dripping Springs Rob Shelton Pedestrian Sidewalk Project Project Layout Map



Rob Shelton Blvd Pedestrian Sidewalk Project from Sports Park Drive across US 290 to Founders Park Safe Routes to School Project # 0_AUS_Dripping Springs01_SRTS-TA_Rob Shelton Sidewalk Project