



TEXAS-MEXICO BORDER TRANSPORTATION MASTER PLAN

Rio Grande Valley/Tamaulipas Region
Public Meeting



BORDER MASTER PLANS

- Defined and supported by the United States-Mexico Joint Working Committee on Transportation Planning and Programming (JWC)
 - Federal Highway Administration (FHWA), Mexican Secretariat of Communication and Transportation (SCT), U.S. Department of State (DOS), Mexican Secretariat of Foreign Relations (SRE), four U.S. border state Departments of Transportation (DOT), six Mexican border States, General Services Administration (GSA), Customs and Border Protection (CBP)

COMPREHENSIVE, BINATIONAL LONG-RANGE PLANS

- Inventory transportation and port of entry (POE) infrastructure that facilitates trade
- Prioritize and promote planned POE and related transportation projects
- Support decision making
- Allocate limited funding resources
- Ensure continued dialogue and coordination on future POE and support transportation infrastructure needs and projects

BTMP Objective and Guiding Principles

Objective

The binational Texas-Mexico Border Transportation Master Plan (BTMP) will facilitate coordination and collaboration between Texas and Mexico on binational planning and programming, and implementation of policies, programs, and projects at border crossings. The BTMP will support the facilities and the multimodal transportation system that serve the Texas-Mexico border.

Guiding Principles

Binational effort

Data-driven

Consensus-oriented

Binational
stakeholder
participation and
public engagement

Encompassing
entire Texas-Mexico
border

Binational Focus Areas

Facilities

- Ports of Entry (POEs)
- POE Support Facilities
- Multimodal Transportation System

Approaches

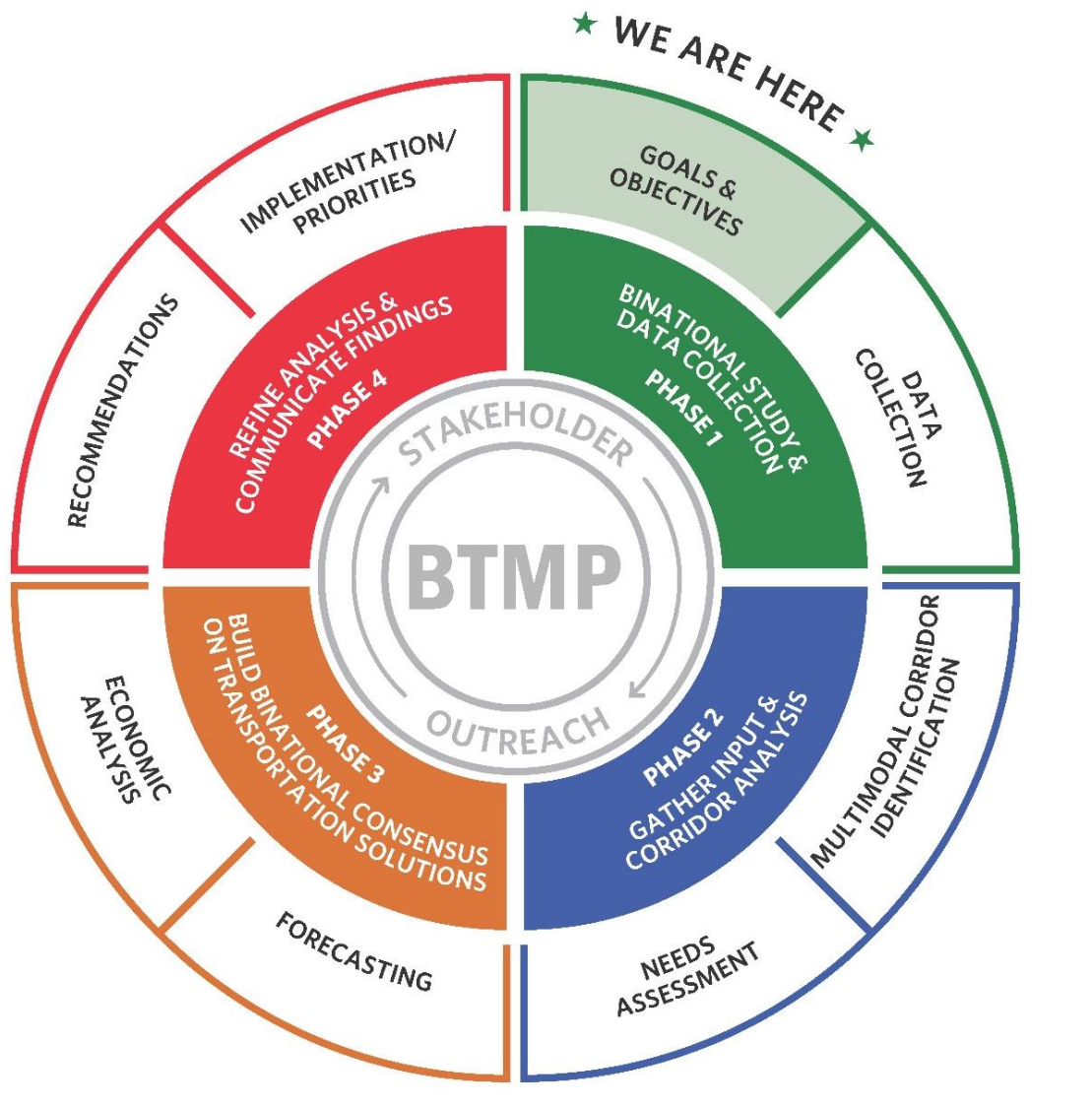
- Policy/Regulations
- Programs
- Projects

Timeframes

- Short-Term (including “low-hanging fruit”)
- Medium-Term (5-10 Years)
- Long-Term (10+ Years)



BTMP Elements





PROJECT OVERVIEW



BTMP Scope

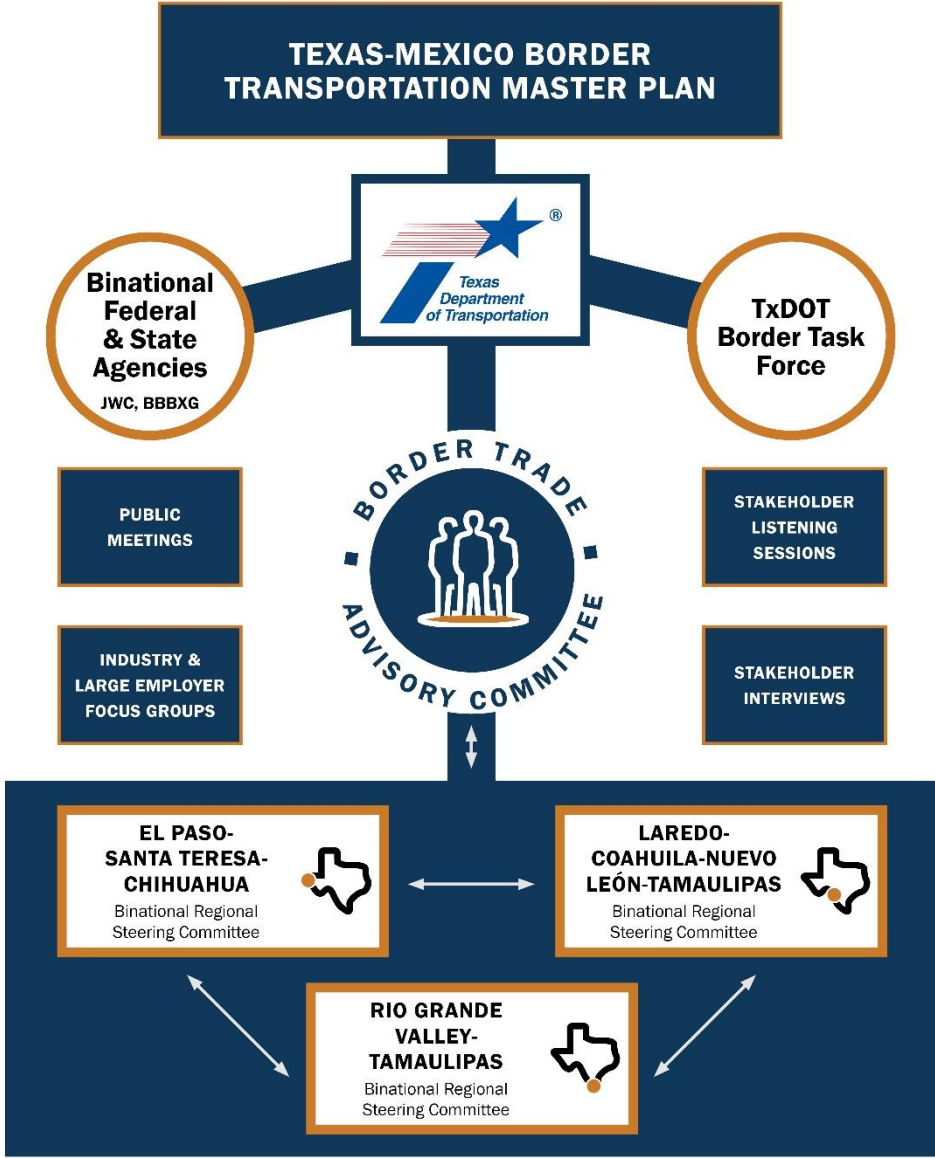
- BTMP Focus
 - Binational, Multimodal Corridors that are Connected by Border Crossings
 - Movement of Passengers and Goods
- “Spheres of Influence”
 - Sphere 1: 100 km / 60 miles north and south of border
 - Sphere 2: Key population and goods production centers in Border States
 - Sphere 3: Five Border States
 - Sphere 4: U.S. and Mexico



BTMP Development Phases & Milestones

<p>PHASE 1: BINATIONAL STUDY & DATA COLLECTION</p>	<p>PHASE 2: GATHER INPUT & CORRIDOR ANALYSIS</p>	<p>PHASE 3: BUILD BINATIONAL CONSENSUS ON TRANSPORTATION SOLUTIONS</p>	<p>PHASE 4: REFINE ANALYSIS & COMMUNICATE FINDINGS</p>	<p>FINAL REPORT</p>
<p>DECEMBER 2018 – APRIL 2019</p>	<p>MAY 2019 – OCTOBER 2019</p>	<p>NOVEMBER 2019 – APRIL 2020</p>	<p>MAY 2020 – OCTOBER 2020</p>	<p>NOVEMBER 2020 – DECEMBER 2020</p>
<p>MILESTONES</p> <ul style="list-style-type: none"> ● Project Management Plan ● Stakeholder Engagement Plan ● Data Collection Plan ● Goals & Objectives ● High-Level Prioritization Process 	<p>MILESTONES</p> <ul style="list-style-type: none"> ● Study Area ● Data Inventory ● Identification of Multimodal Corridors ● Corridor Analyses (SWOT, Trends) 	<p>MILESTONES</p> <ul style="list-style-type: none"> ● Future Scenarios ● Cost Benefit Analysis and Economic Impact of Alternatives ● Feasibility Analysis of Alternatives 	<p>MILESTONES</p> <ul style="list-style-type: none"> ● Prioritization of Alternatives ● Implementation Plan of High-Ranking Alternatives 	<p>MILESTONES</p> <ul style="list-style-type: none"> ● Final Report

Binational Stakeholder Engagement Framework



Draft BTMP Goals

- Eight goals were drafted for the BTMP based on existing transportation plans

Goals	Overview
Safety	Improve binational, multimodal transportation safety
Economic Competitiveness	Improve the contribution of the binational transportation system for economic competitiveness, productivity, and development in the border regions and beyond
Mobility and Reliability	Reduce congestion and improve system efficiency and performance on the binational transportation system
Multimodal Connectivity	Provide binational transportation choices and improved system connectivity for all modes
Sustainable Funding	Identify and sustain funding sources for the binational transportation system
Stewardship	Manage environmental and agency resources responsibly and foster accountability and transparency in decision-making
Customer Service	Understand and incorporate customer feedback in decision-making processes and be transparent in all agency communications
Asset Preservation	Maintain and preserve infrastructure that supports multimodal, binational movement of goods and people

- **Binational Study & Data Collection Phase**
 - Analyze input provided by stakeholders on issues and needs, challenges and potential solutions
 - Understand priority data needs, data availability, data quality, and gaps
 - Conduct bridge, border crossings, and POE data inventory
 - Refine Goals and Objectives by incorporating stakeholder input

Why is My Participation Important?

- My input will help
 - Identify Current Issues and Needs
 - Identify Challenges
 - Identify Potential Solutions to make Border Crossing Movements more Efficient
 - Assess Importance of the Border to Regional and National Economies on Both Countries
 - Articulate the Border Story

Texas-Mexico BTMP Project Managers

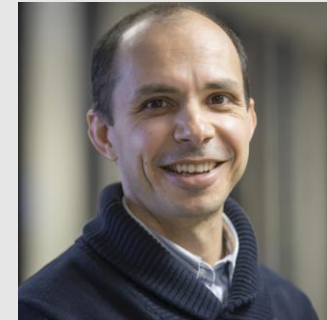


Timoteo "Tim" Juarez, Jr.

TxDOT, Branch Manager, International Trade &
Border Planning

Tim.Juarez@TxDOT.gov

(512) 230-8990



Alejandro Solis, Ph.D.

HDR, Principal Economist & Business Class
Lead, Economics & Finance

Alejandro.Solis@HDRinc.com

(202) 594-3280

BTMP Contact:

Email: TxDOT_BorderPlan@txdot.gov

Phone: 512-685-2955

- How did you hear about this meeting?

- What are the reasons people cross the border?

- Which border crossing do you normally use when you cross the border?

Breakout Session Questions (4 of 7)

- When you cross the border, how do you do it?
(transportation mode: pedestrian, bicycle, private vehicle, commercial vehicle, other)

- What are the greatest challenges and/or needs
 - At the border crossings?
 - For the transportation network linking to the border crossings?

- What ideas do you have for improvements?
 - At the border crossings
 - For the transportation network linking to the border crossings

Breakout Session Questions (7 of 7)

- What is the most important goal for the BTMP (from those listed in the presentation)?

Goals	Overview
Safety	Improve binational, multimodal transportation safety
Economic Competitiveness	Improve the contribution of the binational transportation system for economic competitiveness, productivity, and development in the border regions and beyond
Mobility and Reliability	Reduce congestion and improve system efficiency and performance on the binational transportation system
Multimodal Connectivity	Provide binational transportation choices and improved system connectivity for all modes
Sustainable Funding	Identify and sustain funding sources for the binational transportation system
Stewardship	Manage environmental and agency resources responsibly and foster accountability and transparency in decision-making
Customer Service	Understand and incorporate customer feedback in decision-making processes and be transparent in all agency communications
Asset Preservation	Maintain and preserve infrastructure that supports multimodal, binational movement of goods and people

THANK YOU!