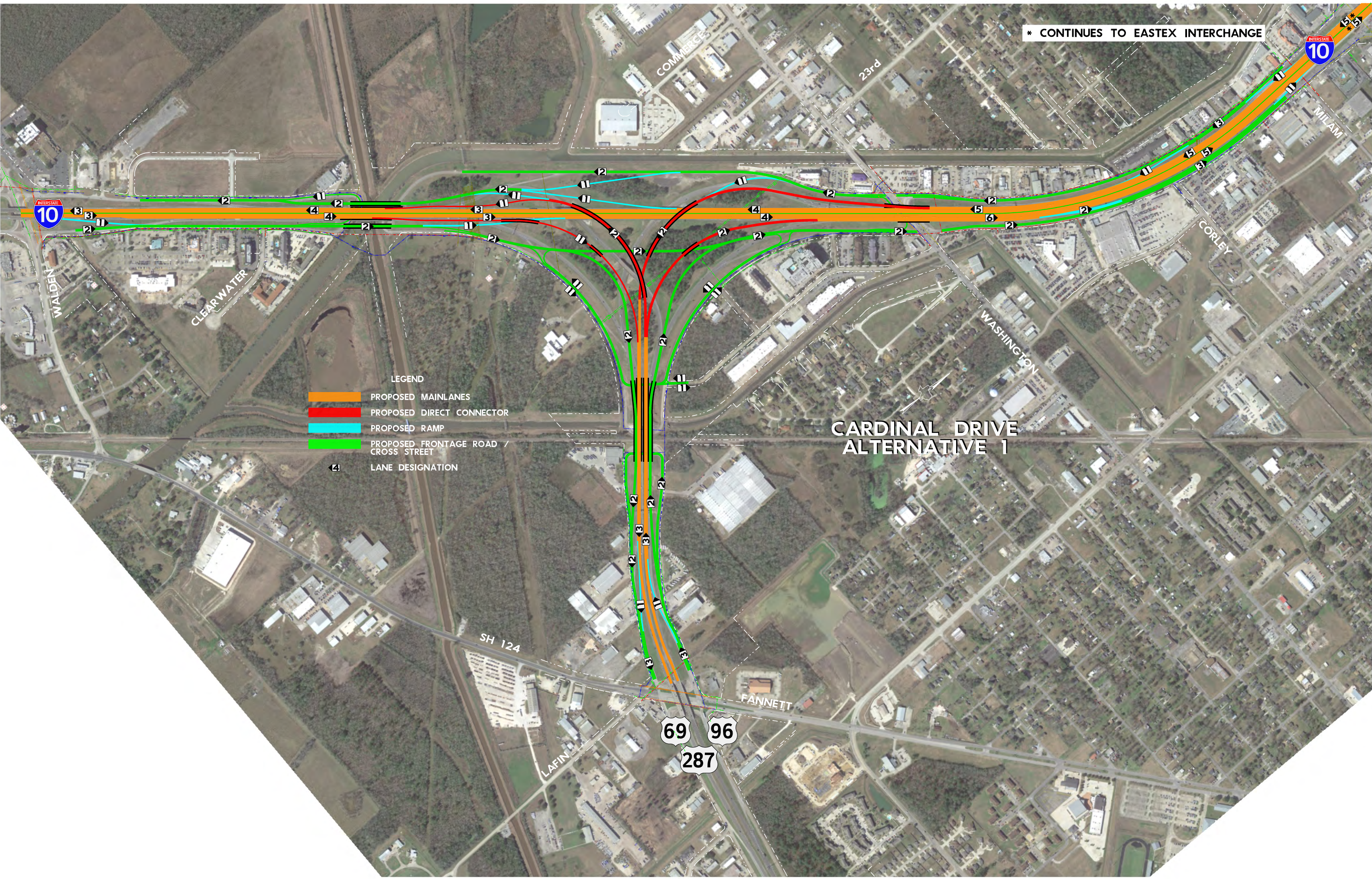


* CONTINUES TO EASTEX INTERCHANGE

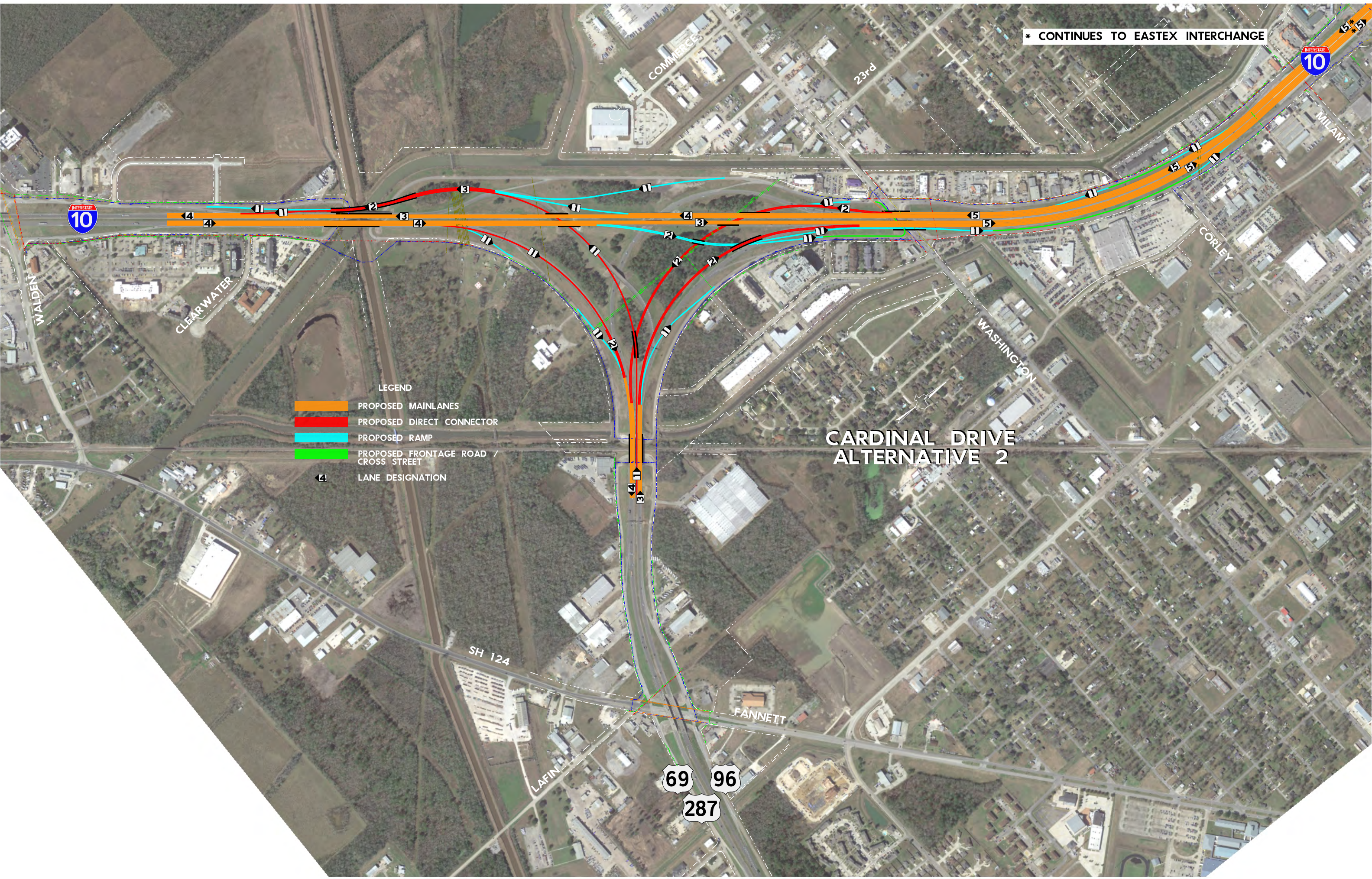


LEGEND

- PROPOSED MAINLANES
- PROPOSED DIRECT CONNECTOR
- PROPOSED RAMP
- PROPOSED FRONTAGE ROAD / CROSS STREET
- LANE DESIGNATION

CARDINAL DRIVE ALTERNATIVE 1

* CONTINUES TO EASTEX INTERCHANGE



LEGEND

- PROPOSED MAINLANES
- PROPOSED DIRECT CONNECTOR
- PROPOSED RAMP
- PROPOSED FRONTAGE ROAD / CROSS STREET
- LANE DESIGNATION

CARDINAL DRIVE ALTERNATIVE 2

INTERSTATE 10

INTERSTATE 10

WALDEN

CLEARWATER

COMMERCIALS

23rd

MILAM

CORLEY

WASHINGTON

SH 124

FANNETT

LAVIN

69 96
287