

SH 146 Feasibility Study

Study Description

The Texas Department of Transportation (TxDOT) is preparing a feasibility study for State Highway (SH) 146, from north of Interstate Highway (IH-) 10 at Langston Road to north of Ferry Road located in both Chambers and Harris Counties. The proposed study crosses the city boundaries of Mont Belvieu and Baytown.

The purpose of the SH 146 Feasibility Study is to investigate existing and future transportation needs and develop conceptual alternatives (options) to improve mobility, safety, accessibility, and drainage along the SH 146 corridor, while minimizing impacts to the environment.

Proposed Purpose and Need

Purpose

- Enhance safety
- Improve mobility
- Accommodate future traffic demand
- Accommodate industrial growth in the study area
- Address heavy vehicle traffic along the study corridor

Need

- Safety concerns due to fatal and incapacitating crashes
- Congestion during peak hours
- Projected population and economic growth
- New commercial/warehouse facilities in the study area
- Roadway designated as part of the Texas Highway Freight Network

Quick Facts

Study Name: SH 146 Feasibility Study

Study Limits: North of IH-10 at Langston Road to North of Ferry Road

Study Location: Chambers and Harris Counties

Study Length: Approximately 4.9 miles

Study Reference Number (CSJ): 0389-02-058

How to Submit Comments

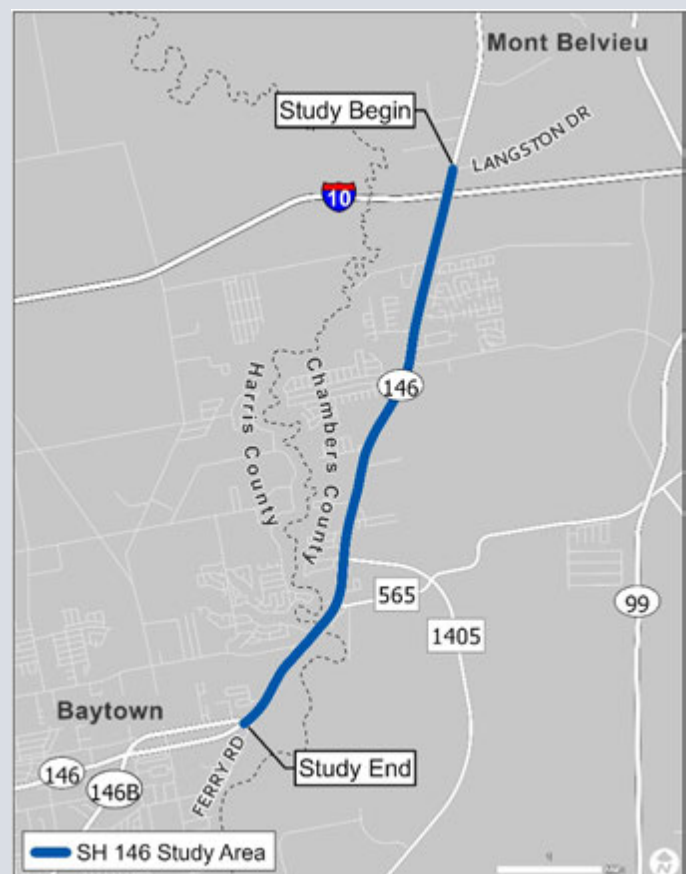
You may submit comments in any language in the following ways:

- Place the comment card in the comment box at the in-person option
- Send your comment via U.S. Mail postmarked by Friday, Aug. 23, 2024

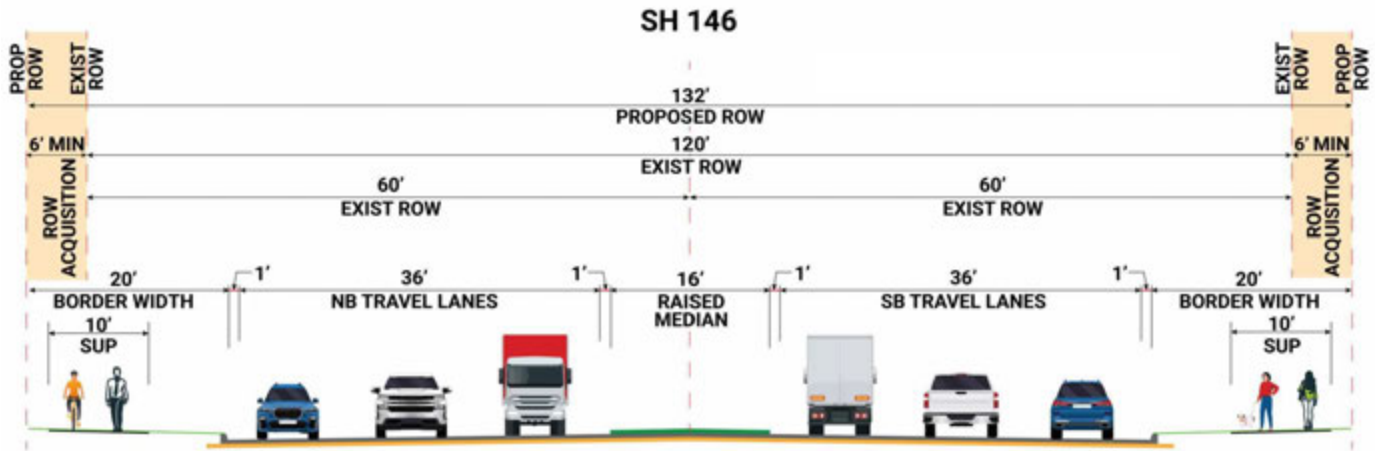
TxDOT Beaumont District
SH 146 Feasibility Study
8350 Eastex Freeway
Beaumont, Texas 77708

- Send your comment via email to: bmtprojects@txdot.gov
- Online Engagement, visit the project page at www.TxDOT.gov search "SH 146 Feasibility Study" click the Share Feedback Image

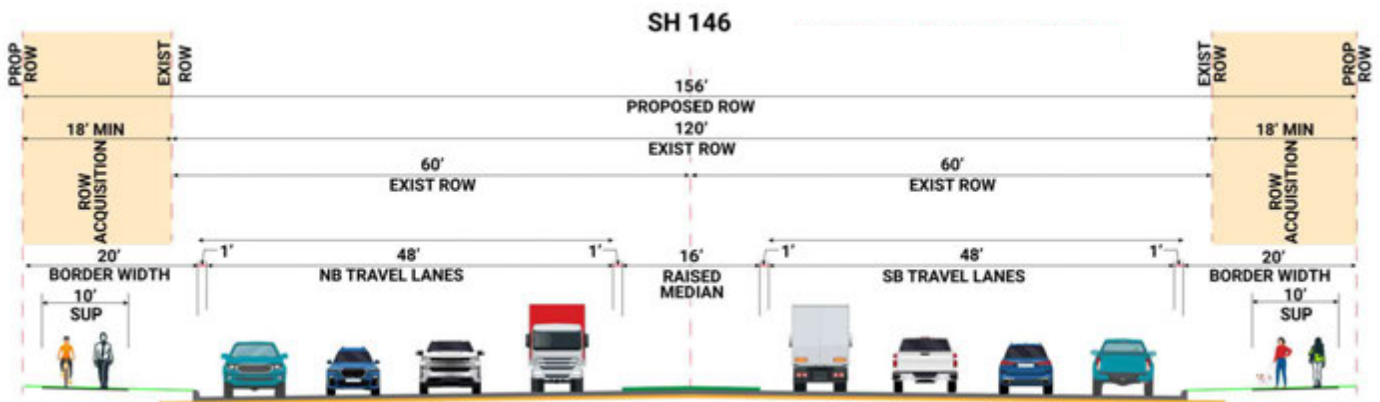
All comments must be received or postmarked by **Friday, Aug. 23, 2024**, to be a part of the official public meeting record.



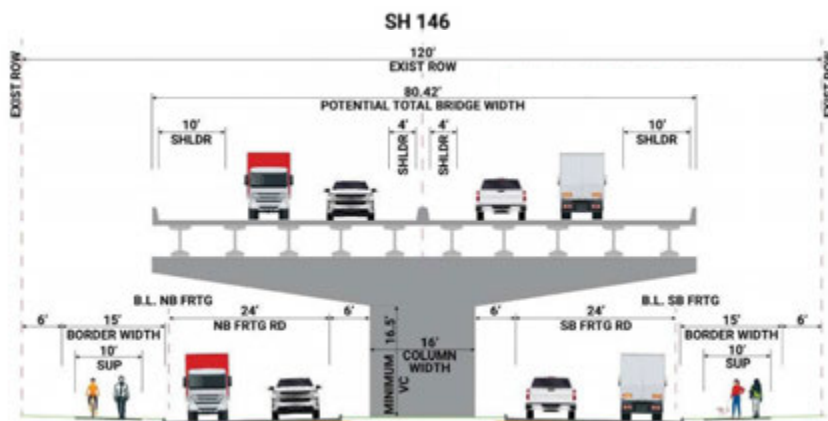
Conceptual Alternative 1: From North of IH-10 to North of Ferry Road Six at Grade Lanes with Raised Median



Conceptual Alternative 2: From North of IH-10 to North of Ferry Road Eight at Grade Lanes with Raised Median



Conceptual Alternative 3: From North of IH-10 to North of Ferry Road Four Elevated Lanes and Four at Grade Lanes



SUP = Shared-Use Path

*All conceptual alternatives are preliminary and subject to change.