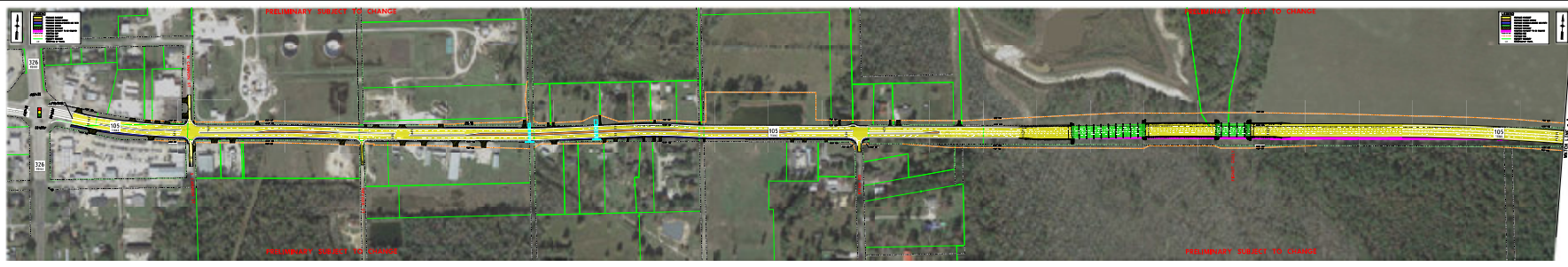


Texas Department of Transportation
 COUNTY: DALLAS
 PROJECT: STATE ROUTE 105
 SHEET: 105
 DATE: NOVEMBER 2005
 DRAWN BY: [Signature]
 CHECKED BY: [Signature]
 PROJECT LIMITS: FROM 0+00 TO 10+00
 FOR THE IMPROVEMENT OF STATE ROUTE 105



Texas Department of Transportation
 COUNTY: DALLAS
 PROJECT: STATE ROUTE 105
 SHEET: 105
 DATE: NOVEMBER 2005
 DRAWN BY: [Signature]
 CHECKED BY: [Signature]
 PROJECT LIMITS: FROM 0+00 TO 10+00
 FOR THE IMPROVEMENT OF STATE ROUTE 105