




Virtual Public Meeting Pre-Recorded Video Presentation

SH 105 Improvement Project Hardin County

From 0.1 mile east of SH 326 to Pine Island Bayou

CSJ: 0339-04-036
(Project Number)

Posted Online: Thursday, Nov. 18, 2021 

Welcome to the TxDOT Beaumont District's virtual public meeting for the SH 105 Improvement Project. TxDOT is proposing to reconstruct and expand SH 105 in Hardin County, Texas, from 0.1 mile east of SH 326 in Sour Lake to Pine Island Bayou near Bevil Oaks. We appreciate your interest in the project and thank each of you for your participation.

Please note, for the virtual public meeting you can pause this presentation at any point to allow more time to view the slides or view other documents on the website.

National Environmental Policy Act (NEPA)



The environmental review, consultation, and other actions required by applicable Federal environmental laws for this project are being, or have been, carried-out by TxDOT pursuant to 23 U.S.C. 327 and a Memorandum of Understanding dated December 9, 2019, and executed by FHWA and TxDOT.

Spanish:

La revisión y consulta ambiental, y demás acciones requeridas por las leyes ambientales federales aplicables a este proyecto están siendo o han sido realizadas por el TxDOT de acuerdo a la disposición 23 U.S.C. 327 y a un memorando de entendimiento de fecha 9 de diciembre de 2019, y llevadas a cabo por la Administración Federal de Autopistas (FHWA) y el TxDOT.



Prior to Dec.16, 2014, the Federal Highway Administration, otherwise known as FHWA, reviewed and approved documents prepared under the National Environmental Policy Act, known as NEPA. However, on Dec. 16, 2014, TxDOT assumed responsibility from FHWA for reviewing and approving certain assigned NEPA environmental documents. This memorandum of understanding was renewed on Dec. 9, 2019. This review and approval process applies to this proposed project.

Notices for this virtual public meeting were published on the TxDOT website. The notices also appeared in The Beaumont Enterprise in English and El Perico in Spanish on Sunday, Oct. 31, 2021, and in The Examiner in English on Thursday, Nov. 4, 2021. In addition, notices were mailed to adjacent property owners, elected and public officials, and previous public involvement participants. Notices were also emailed to those who signed up to be on the email list at the previous public meeting or those who subscribed to email updates on TxDOT's SH 105 project page on www.txdot.gov.

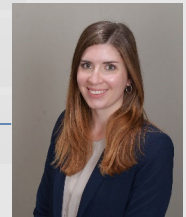
Virtual Public Meeting Agenda



- 1 Welcome
- 2 Project Overview
- 3 Environmental Overview
- 4 Project Schedule and Next Steps
- 5 Public Comment Process
- 6 Adjournment



Adam Jack, P.E.
TxDOT Beaumont District Director of
Transportation Planning and Development



Presenter:
Katrina Harrison
Environmental Scientist/Planner

TxDOT- SH 105 Improvement Project

Nov. 18, 2021



My name is Katrina Harrison and I would like to welcome and also thank you for watching this virtual public meeting that was shared with the public starting on Thursday, November 18, 2021. I am presenting on behalf of the TxDOT Beaumont District.

We'll be covering the following areas:

A project overview;

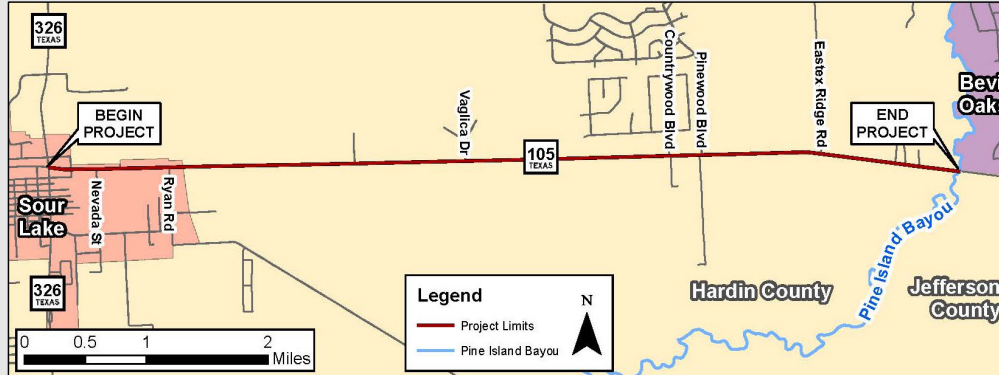
Environmental overview;

Project schedule and next steps;

The public comment process and then,

Adjournment – we'll conclude this video presentation.

Project Description



The proposed improvements to the approximately 7.3-mile-long project include:

- Replacing the existing two-lane roadway with a four-lane divided roadway with shoulders and a median
- Adding a raised median as well as shared-use lanes to accommodate bicyclists and sidewalks for pedestrians within the Sour Lake city limits
- Adding a 48-foot-wide depressed median, median crossovers and four-foot-wide inside shoulders with 10-foot-wide shoulder outside the city limits

The project is estimated to cost \$79 million and is fully funded.

The proposed improvements to the approximately 7.3-mile-long project include:

- Replacing the existing two-lane roadway with a four-lane divided roadway with shoulders and a median
- Adding a raised median as well as shared-use lanes to accommodate bicyclists and sidewalks for pedestrians within the Sour Lake city limits
- Adding a 48-foot-wide depressed median, median crossovers and four-foot-wide inside shoulders with 10-foot-wide shoulder outside the city limits

The project is estimated to cost \$79 million and is fully funded.

Why is the Proposed Project Needed?



- The proposed project improves safety, connectivity and operational efficiency for vehicles traveling on SH 105.

Traffic Prediction*

Projected (2022)		12,600 vehicles per day
Projected (2042)		17,000 vehicles per day
Projected (2052)		19,200 vehicles per day

* Traffic volumes were generated using growth rates provided by the TxDOT Transportation Planning and Programming Division.



Why is this proposed project needed?

The proposed project is needed to improve connectivity with surrounding rural divided highways, operational efficiency and safety for vehicles traveling on SH 105.

Traffic on SH 105 is projected to increase from 12,600 vehicles per day in 2022 to 17,000 vehicles per day in 2042 to 19,200 vehicles per day in 2052. These increases in traffic volumes will increase congestion on the corridor.

Next, we would like to provide you with a summary of our public involvement efforts – giving you a quick look at how TxDOT used public feedback to guide the decision-making process.

First Public Meeting – May 2, 2019



Open house on May 2, 2019:

- **172** members of the public attended
- **97** written comments were received
- Public feedback included:
 - Project alternative preferences
 - Drainage concerns
- Based on feedback, TxDOT:
 - Identified a preferred alternative
 - Launched a drainage study to further understand drainage concerns in the area



**All comments included
in the May 2, 2019
public meeting summary
report available online at
www.txdot.gov**



TxDOT held the first open house public meeting on May 2, 2019, at the Sour Lake Community Center. The purpose of the public meeting was to receive feedback from stakeholders and the community along the SH 105 corridor to assist TxDOT in making the selection of a recommended alternative. The alternatives presented included A: widening SH 105 to the north, B: widening SH 105 to the south, or C: widening SH 105 to the north in some locations and to the south in other locations.

TxDOT received nearly 100 comments from the public as part of the first public meeting outreach effort. TxDOT used this feedback to identify a recommended alternative, or Alternative C, which included widening SH 105 to the north in some locations, and to the south in other locations. In addition, TxDOT received feedback regarding drainage concerns in the project area. In response, TxDOT launched a drainage study to further understand drainage concerns in the area and identify solutions.

Online Engagement – Dec. 7, 2020 to Jan. 15, 2021



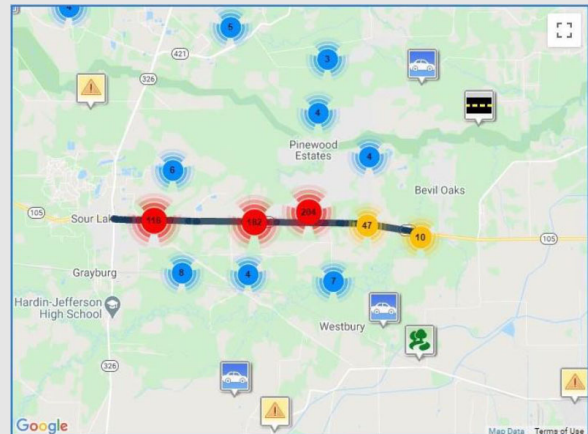
Comments submitted via the online survey:

- **385** participants completed the survey
- **510** comments submitted

Based on survey input, TxDOT:

- Removed the proposed backage road
- Finalized the locations of four proposed detention ponds

All comments included in the Dec. 7, 2020 to Jan. 15, 2021 online engagement summary report are available online at www.txdot.gov



Visual Summary of Interactive “Map Markers” from Online Survey

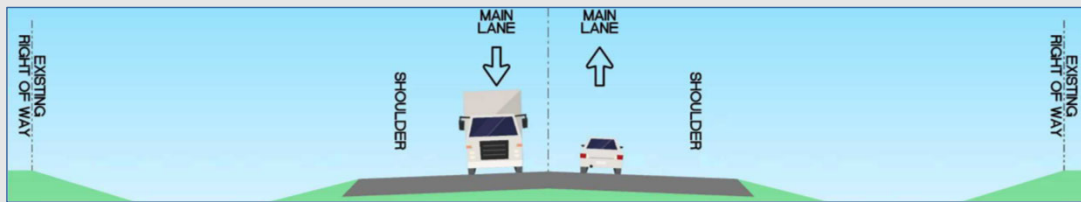
TxDOT also solicited the public’s continued input regarding proposed drainage recommendations and access alternatives through an online engagement survey, which was live from Dec. 7, 2020 to Jan. 15, 2021. During this time frame, 1,288 people visited the survey page and 385 visitors participated in the survey.

In total, TxDOT received more than 500 comments from the public as part of the online engagement survey. Based on survey input, TxDOT removed the proposed backage road and finalized the locations of four proposed detention ponds.

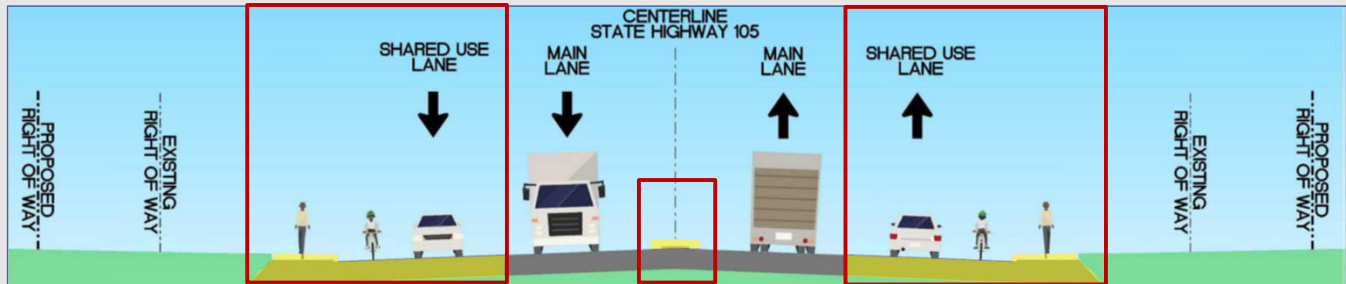
Proposed Typical Section – From SH 326 to Sour Lake City Limit



Existing SH 326 to Pine Island Bayou



Proposed SH 326 to City of Sour Lake City Limit



TxDOT – SH 105 Improvement Project

Nov. 18, 2021



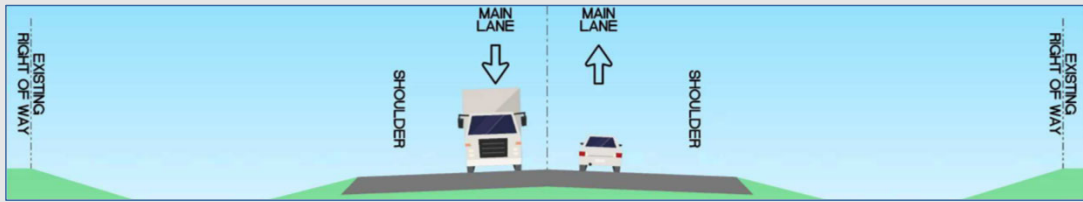
Let's switch gears now and talk about the proposed design changes.

Within the project limits, SH 105 is a two-lane, undivided highway with one 12-foot-wide travel lane in each direction and typical 10-foot-wide outside shoulders. The typical right of way width varies between 100 and 200 feet. There are currently no bicycle or pedestrian facilities within the project limits.

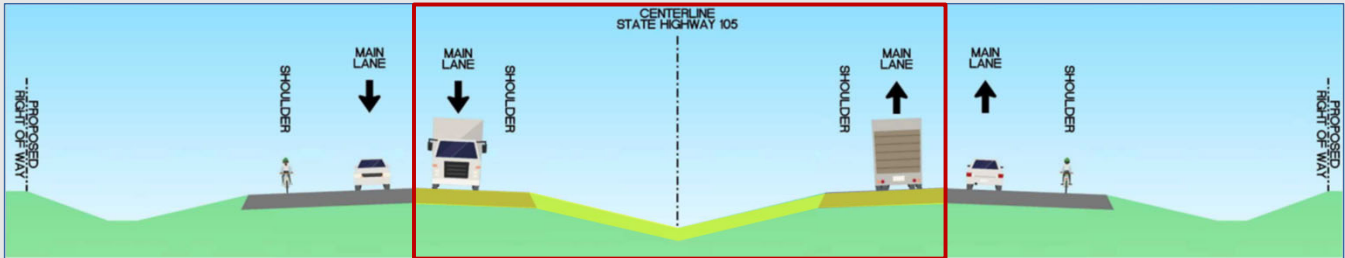
From SH 326 to the City of Sour Lake city limit, or approximately Ryan Road, TxDOT is proposing to add a 6-foot-wide raised median, 6-foot-wide sidewalks, and a lane in each direction, widening the roadway from two lanes to four lanes. The proposed lanes include two 12-foot-wide inside travel lanes (one in each direction), two 14-foot-wide shared-use outside travel lanes (one in each direction), and two 12-foot-wide left turn lanes at median openings (one in each direction) within a typical 120-foot-wide right-of-way.

Proposed Typical Section – From Sour Lake City Limit to Pine Island Bayou

Existing SH 326 to Pine Island Bayou



Proposed City of Sour Lake City Limit to Pine Island Bayou



TxDOT – SH 105 Improvement Project

Nov. 18, 2021



Between the Sour Lake city limit, or approximately Ryan Road, and Pine Island Bayou, TxDOT is proposing to add a 48-foot-wide depressed median and a lane in each direction, widening the roadway from two lanes to four. The proposed lanes include four 12-foot-wide travel lanes (two in each direction), with two 12-foot-wide left turn lanes (one in each direction) at median openings within an approximate 170 to 235-foot-wide ROW. Where left turn lanes are proposed, the depressed median would be reduced to 36 feet. Shoulders would consist of a 4-foot-wide inside shoulder and a 10-foot-wide outside shoulder.

Near the eastern project limits approaching Pine Island Bayou, the typical section would change to four 12-foot-wide travel lanes and one 14-foot-wide continuous left turn lane with 10-foot-wide outside shoulders within a 200-foot-wide ROW.

Environmental Overview



- Environmental technical reports and an Environmental Assessment would be prepared for the proposed project to comply with the National Environmental Policy Act (NEPA)
- The environmental studies will identify and assess potential impacts to the natural and human environment, including:
 - Air Quality
 - Archeological Resources
 - Non-Archeological Historic Properties
 - Community Impacts
 - Biological Resources
 - Hazardous Materials
 - Traffic Noise
 - Water Resources



The environmental technical reports and Environmental Assessment for this project would comply with the National Environmental Policy Act. In addition, the environmental review, consultation, and other actions required by applicable Federal environmental laws for this project are being, or have been, carried out by TxDOT pursuant to 23 United States Code 327. This also includes the Memorandum of Understanding dated December 9, 2019, and executed by the Federal Highway Administration and TxDOT.

The environmental studies will identify and assess potential impacts by the proposed project to the natural and human environment including:

- air quality;
- archeological resources;
- non-archeological historic properties;
- community and social impacts;
- biological resources including threatened and endangered species and vegetation types;
- hazardous materials;
- indirect and cumulative effects;
- traffic noise; and
- water resources.

Right-of-Way (ROW) Acquisition Information



- Approximately 171 acres of additional right of way (ROW) and 5.3 acres of construction and drainage easements are anticipated
- The proposed project would potentially displace the following:
 - One residence
 - Three commercial structures
 - Four non-residential/non-commercial structures

42 USC Ch. 61: UNIFORM RELOCATION ASSISTANCE AND REAL PROPERTY ACQUISITION POLICIES FOR FEDERAL AND FEDERALLY ASSISTED PROGRAMS
From Title 42--THE PUBLIC HEALTH AND WELFARE

CHAPTER 61--UNIFORM RELOCATION ASSISTANCE AND REAL PROPERTY ACQUISITION POLICIES FOR FEDERAL AND FEDERALLY ASSISTED PROGRAMS

SUBCHAPTER I--GENERAL PROVISIONS

4601. Definitions.

4602. Effect upon property acquisition.

4603. Additional appropriations for moving costs, relocation benefits and other expenses incurred in acquisition of lands for National Park System; waiver of benefits.

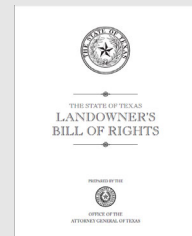
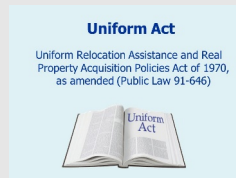
4604. Certification.

4605. Displaced persons not eligible for assistance.

SUBCHAPTER II--UNIFORM RELOCATION ASSISTANCE

4621. Declaration of findings and policy.

4622. Moving and related expenses.



Please visit www.txdot.gov for more information about the Uniform Act and TxDOT Relocation Assistance Program information

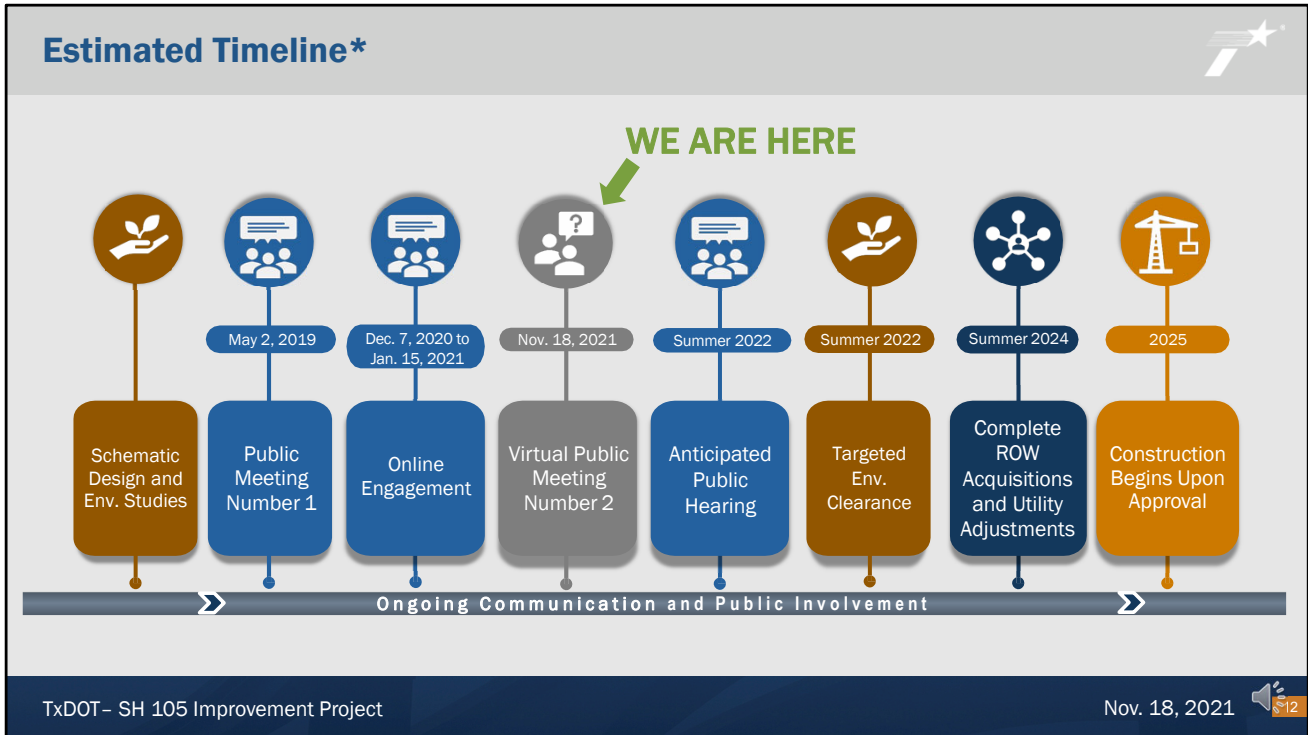


Let's talk about the right-of-way acquisition process.

Approximately 171 acres of additional right of way and 5.3 acres of construction and drainage easements are anticipated as part of the proposed project.

The proposed project would potentially displace one residence, three commercial structures, and four non-residential/non-commercial structures.

We invite you to review more information about the TxDOT Relocation Assistance Program concerning services and benefits for displaced persons and businesses if needed on the TxDOT website on www.txdot.gov.

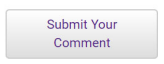


We wanted to also highlight the estimated project timeline.

Look for the green “We are here” arrow, which indicates where we are in the project process right now. Currently, final design refinements are underway with a final schematic anticipated in Fall 2021. A draft environmental document is anticipated to be complete in Spring 2022 with a public hearing planned for Summer 2022. Upon approval of the environmental document, environmental clearance is anticipated in Summer 2022. Right-of-way acquisition and utility relocations will be initiated after environmental clearance and are expected to be complete by Summer 2024. Construction is then anticipated to start in 2025 upon approval. Continuous construction communication will be provided on the Beaumont District Twitter site, and we’ll feature more information about how to stay informed in just a few minutes.

How to Submit Your Comments



- 1) **Email:**
bmtprojects@txdot.gov
- 2) **Mail:**
Texas Department of Transportation
Lisa Collins, P.E., Project Manager
8350 Eastex Freeway
Beaumont, TX 77708
- 3) **Submit Online:**
 - » Visit www.TxDOT.gov
In the upper right-hand
Search box enter: SH 105 Sour Lake
 - » Then click: 
- 4) **Call:**
 - » (409) 241-5635 to leave a recorded voicemail
comment in English or Spanish from Nov. 18, 2021,
at 5:00 p.m. until Dec. 3, 2021, at 11:59 p.m.
 - » (409) 898-5732 with any questions throughout the
project development process

Virtual Public Meeting - SH 105 Improvement Project

[Texas Department of Transportation](#) > [Inside TxDOT](#) > [Get Involved](#)
> [About Public Hearings, Meetings and Notices](#) > [Hearings, Meetings and Notices Schedule](#)

When: Thursday, Nov. 18, 2021
Pre-recorded video will be posted below on this date by 5 p.m.

Where: Virtual only - there is no in-person meeting.

Purpose: The TxDOT Beaumont District will host a virtual public meeting to gather input on the proposed [SH 105 Improvement Project](#), which includes reconstructing and expanding SH 105 in Hardin County, Texas from 0.1 mile east of SH 326 in Sour Lake to Pine Island Bayou near Bevil Oaks. All comments must be received on or before Friday, Dec. 3, 2021, to be part of the virtual public meeting record.

Submit Your Comments Button

[Submit Your Comment](#)

[Subscribe to Updates](#)

[Contact Us](#)

Comments must be received or postmarked by Friday, Dec. 3, 2021 to be included in the online virtual public meeting summary report

TxDOT - SH 105 Improvement Project

Nov. 18, 2021



TxDOT is committed to continuing our efforts to gain public feedback about this project. We understand that this virtual public meeting format is a bit different, so let's take a few minutes and explain the comment process – the most important part of this video.

The Beaumont District is asking the public to provide their comments in the following ways:

Email your comments to: bmtprojects@txdot.gov

Mail your comments to:

Texas Department of Transportation

Lisa Collins, P.E., Project Manager

8350 Eastex Freeway

Beaumont, Texas 77708

Submit your comments online:

Visit www.txdot.gov

In the "Search TxDOT" box in the upper-right hand corner, enter: SH 105 Sour Lake

Click on the "Submit Your Comments" button at the top right of the page, or click on the

Email link at the bottom of the page

Call (409) 241-5635 to leave a recorded voicemail comment in Spanish or English. The comment line opens on Thursday, Nov. 18 at 5 p.m. and closes on Friday, Dec. 3 at 11:59 p.m.

Call (409) 898-5732 with any questions throughout the project development process.

If you would like your comments to be part of the official public meeting record, please be sure to submit your comments no later than Friday, Dec. 3, 2021. The responses to your comments submitted during the comment period will be included in the online virtual public meeting summary report. This report will be posted to the TxDOT website as soon as it becomes available.

We appreciate your understanding with this comment process.



Sign up for email updates by visiting
www.txdot.gov and Search:
SH 105 Sour Lake

SH 105 Improvement Project

[Texas Department of Transportation](#) > [Inside TxDOT](#) > [Projects](#) > [Projects & Studies](#)
> [Beaumont District](#)

Subscribe to
Updates Button

Subscribe to
Updates ✉

Project Overview

TxDOT Beaumont District is proposing to reconstruct and expand SH 105 in Hardin County, Texas from 0.1 mile east of SH 326 in Sour Lake to Pine Island Bayou near Bevil Oaks.

Proposed Benefits

The proposed project is anticipated to improve safety, enhance mobility and reduce congestion.



We encourage the public to stay informed about the project in the following ways:

First, sign up to receive email updates. Visit www.txdot.gov and in the upper-right hand corner, enter: SH 105 Sour Lake in the search box. Click on the project page, and then click on the upper-right hand button called: Subscribe to Updates. When there is a project update, an email will be sent to you.

We also invite you to view the various project materials on the TxDOT website. For example, the detailed schematic that allows you to see the design up close is available online.

Quick Contacts – Engage TxDOT Online



- Contact the TxDOT Beaumont District office with any questions at:
(409) 898-5732
- Email bmtprojects@txdot.gov
- **Follow us: Twitter - Beaumont:**
<https://twitter.com/TxDOTBeaumont>
- **Like us: TxDOT Facebook:**
<https://www.facebook.com/TxDOT/>



Secondly, don't hesitate to contact the Beaumont District office with any questions.

You can contact the Beaumont District by calling (409) 898-5732 with any questions or comments. And don't forget to click on these links and follow us on Twitter for ongoing road closures and construction updates on the Beaumont District Twitter page. You can also keep up with TxDOT news on our Facebook page.



Thank you for watching!

*Please don't forget to submit your comments by
Friday, Dec. 3, 2021*



Thank you for watching! Don't forget to submit your comments by Friday, Dec. 3, 2021.
Thank you again and please, stay safe.

This concludes the presentation and this virtual public meeting is adjourned.