



GATEWAY TO THE BIG THICKET

US 69 CORRIDOR STUDY

NEWSLETTER No. 1
DECEMBER 2018

IN THIS ISSUE

- Planning Study Update 1
- The Results 1
- The Road Ahead 4
- Contact Us 4

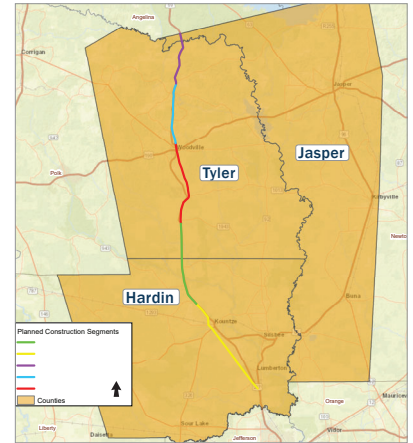
For those of you that took our US 69 online survey –



WE THANK YOU!

PLANNING STUDY UPDATE

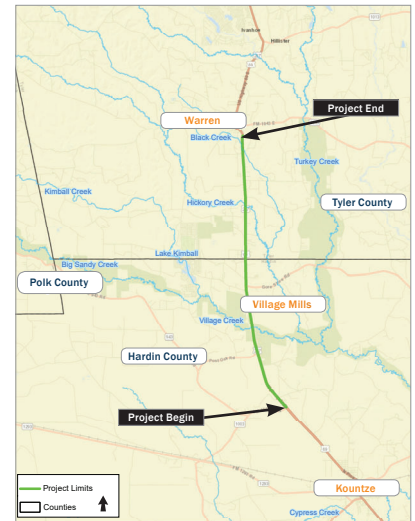
The Texas Department of Transportation (TxDOT) Beaumont District US 69 corridor study spans approximately 60 miles stretching across Tyler and Hardin Counties (from US 96 to the Jasper/Angelina County line) and is a significant contributor to the Texas economy and the public. Priority funding has been secured for the first segment, which is located from FM 1003 near the Big Thicket National Preserve to Warren, Texas (“Gateway to the Big Thicket”). This 12.3-mile roadway has become a critical bottleneck due to the movement of freight and people from southeast Texas and the Port of Beaumont. Gateway to the Big Thicket’s proximity to the Big Thicket and other natural areas presents numerous environmental and right-of-way challenges, which will require input and coordination with the public and local, state, and federal agencies.



US 69 Corridor Study Segments

This newsletter provides a summary of the feedback received during Fall 2017 and Spring 2018. The public was engaged to gather input for the study effort, which is aimed at:

- Relieving traffic congestion caused by a growing population
- Providing safer travel through the area
- Improving emergency evacuation routes
- Supporting economic development



Gateway to the Big Thicket

THE RESULTS

The MetroQuest survey was available 24/7 from November 29, 2017, through June 18, 2018. Your input was an important part of the initial planning process and helped provide big picture priorities, concerns, opportunities, and geographic areas of interest, which will help further shape the project development process. The survey is closed, but the inactive demo link is available to view the MetroQuest survey material at the following link:

<https://us69corridor-demo.metroquest.com>

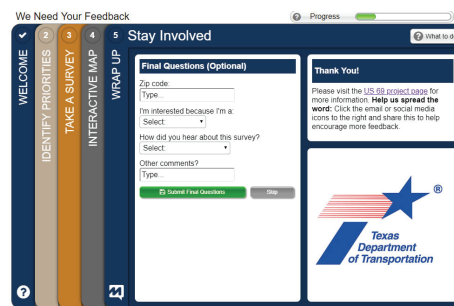
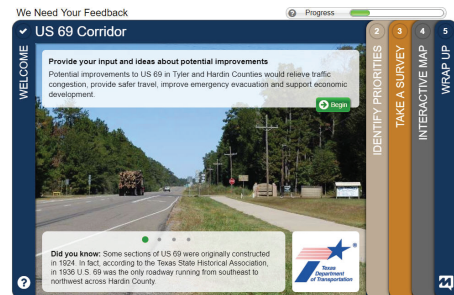
- A total of **377** participants
- Responses from **36** different zip codes
- Social media was the **#1** successful outreach
- More than **50%** responded to survey by mobile phones



Participants were asked to rank the **top three priority issues** that TxDOT should consider when developing potential improvements for the US 69 Corridor.

THE OPTIONS:

- A IMPROVE THE ECONOMY**
I want to support new and existing development along the corridor through additional access and mobility.
- B HURRICANE EVACUATION**
I want to ensure that US 69 will function effectively in the event of a hurricane.
- C PROTECT THE ENVIRONMENT**
I want to preserve environmental and cultural resources, such as streams, tributaries, and wetlands; threatened and endangered species; historic resources, such as buildings and districts; and archaeological resources.
- D REDUCE CONGESTION**
I want to reduce the amount of time it takes to travel along US 69.
- E ENHANCE CONNECTIVITY**
I want it to be easier to travel from one area to another.
- F IMPROVE SAFETY**
I want to address safety with potential improvements such as adding guardrails, straightening curves, and improving sight distance.
- G MAINTAIN THE HIGHWAY**
I want to ensure US 69 is maintained on an ongoing basis.



Online Survey Examples

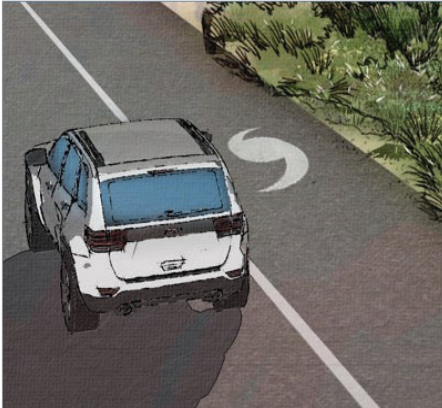
PRIORITY RANKING - TOP 3

Survey participants said the Top 3 priorities for the corridor are:

- 1 IMPROVE SAFETY**
- 2 REDUCE CONGESTION**
- 3 MAINTAIN THE HIGHWAY**

Survey results also reflected that “**Protect the Environment**” was an important priority to participants.

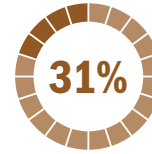
Participants were also asked for more information about their general travel needs including purpose and frequency of travel, needs when traveling, and thoughts on traffic flow.



68% of participants reported using the corridor daily.



59% of participants use the corridor to travel to work.



31% of participants chose "add more travel lanes" as most important improvement area.



62% of participants would support on/off ramps versus direct access to US 69.

The online survey asked participants to drag and drop at least three markers on a map of the US 69 Corridor indicating home, work, environmental, truck traffic, traffic, and other. The table below shows the number of markers and comments received in the MetroQuest Survey:

HOME

175 Markers

86 Comments

WORK

117 Markers

61 Comments

ENVIRONMENTAL

162 Markers

129 Comments

TRUCK TRAFFIC

142 Markers

74 Comments

TRAFFIC

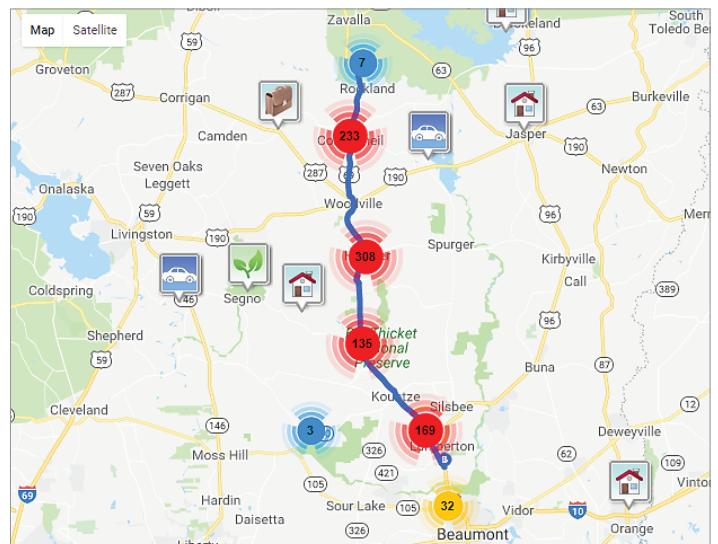
142 Markers

74 Comments

OTHER

52 Markers

49 Comments



Markers placed along the US 69 Corridor

A total of 911 map markers and 473 comments provided valuable information about the corridor. Insights provided that the corridor is heavily utilized by residents in the area, work commuters, and heavy trucks and is also environmentally pleasing and valuable to the corridor users.

Survey respondents identified areas where roadway improvements could help to improve driver safety, as well as opportunities to conserve the scenic beauty along the corridor while implementing maintenance activities to avoid animal vehicle collisions.

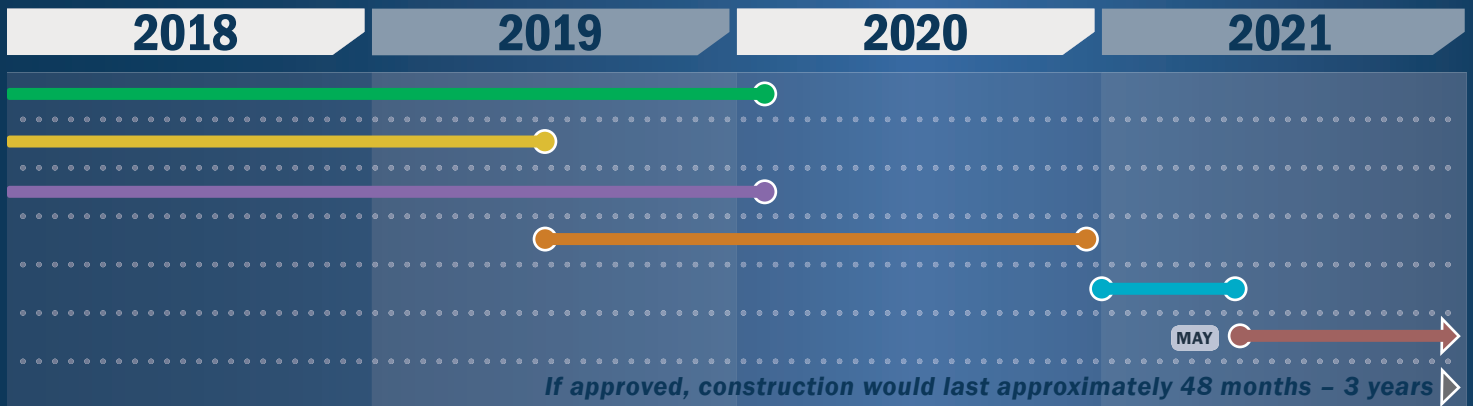
THE ROAD AHEAD ...

TxDOT will work with the public and local, state, and federal agencies to gather data to inform the preliminary engineering services and develop a design schematic concurrent with the environmental process. A design schematic showing a preliminary alignment will be prepared and available for public review and input. Actual construction timing will vary, and the specific alignment will be determined during this phase. *Coming items include environmental field surveys, right-of-entry requests to adjacent landowners, research, public outreach, traffic studies, noise surveys, subsurface utility engineering, design, and sense of place studies.* Gateway to the Big Thicket is located within the Big Thicket National Preserve Parkway and has a strong sense of place that needs travelers to be able to recognize, identify, and navigate the unique area.



TxDOT needs your help delivering a successful project by engaging and providing input during the project development process.

ESTIMATED PROJECT TIMELINE *Dates subject to change



- Environmental Process & Land Surveys
- Potential Concepts Presented to Public for Consideration
- Design and Schematic Development
- Construction Documents
- Estimated Letting Date (Open to Construction Bidding)
- Estimated Construction

CONTACT US

Lisa Collins, P.E.
Texas Department of Transportation,
Beaumont District

Phone: (409) 898-5816
Email: Lisa.Collins@txdot.gov
Website: txdot.gov
> Search for *US 69 Gateway to the Big Thicket*

www.txdot.gov

Subscribe to email updates and/or submit your comments online!

Scan the QR code with your phone or tablet!

