



Welcome

US 69 Woodville-Colmesneil Relief Route Public Meeting

From south of Black Creek to south of Recreational Road 255 in Tyler County, Texas

CSJs (Control Section Job Numbers):
0200-06-043; 0200-07-043; 0200-08-050

Why am I here?

- Learn about the US 69 Woodville-Colmesneil Relief Route
- Provide comments on the improvement area

October 2023

Slide 1: Welcome Slide

Welcome to the TxDOT Beaumont District's virtual public meeting for the US 69 Woodville-Colmesneil Relief Route. TxDOT is proposing to construct a new location roadway diverging from US 69 in Tyler County, Texas, from south of Black Creek to south of Recreational Road 255.

My name is Morgan Vance and I would like to thank you for watching this virtual public meeting that was shared with the public starting on Tuesday, October 24, 2023. I am presenting on behalf of the TxDOT Beaumont District.

Please note, you can pause this presentation at any point to allow more time to view the slides or other documents on the website.



#EndTheStreakTX

End the streak of daily deaths on Texas roadways.

Slide 2. End the Streak Slide

November 7, 2000, was the last deathless day on roadways in Texas. That means for nearly 23 years, at least one person has died every single day. We all have a part to play to change that. This message is that reminder – to End the Streak of deaths on Texas highways.

We need drivers and passengers to act more responsibly and help us reach our goal of zero deaths by 2050. Texans can play a major role in ending fatal crashes with a few simple driving habits: wear seatbelts, drive the speed limit, put away the phone and other distractions, and never drive when sleepy or under the influence of alcohol or drugs. Please do your part and share this message with your friends and family.

Table of Contents



- 1 Project overview
- 2 Project purpose and need
- 3 Proposed typical sections
- 4 Environmental process
- 5 Right-of-way information
- 6 Project timeline
- 7 How to comment

Slide 3. Table of Contents

In this virtual public meeting, we will be covering the following areas:

- A project overview;
- Environmental overview;
- Project schedule and next steps;
- The public comment process and then,
- Adjournment –which will conclude this video presentation.

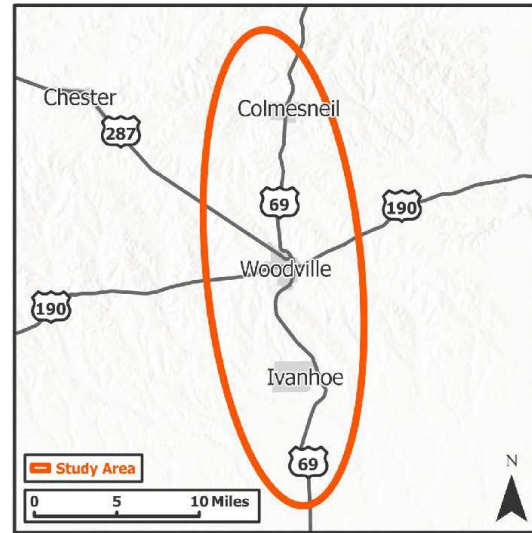
Project Overview



The proposed improvements to the approximately 25-mile-long project include:

- New location roadway with approximate right-of-way widths of 400' for south of US 190 and 300' for north of US 190
- Ultimate configuration of a four-lane divided roadway with two-lane frontage roads in each direction south of US 190
- Ultimate configuration of a four-lane divided roadway north of US 190
- Northbound 13-foot outside shoulder to be used as a hurricane evacuation lane
- Bicycle and pedestrian accommodations will be considered

Proposal is preliminary and subject to change.



Slide 4. Project Overview

The proposed improvements stretching along the approximately 25-mile-long study area include:

- A new location roadway with approximate right-of-way widths of 400 feet for US 69 south of US 190 and 300 feet for US 69 north of US 190
- US 69 is planned to have an ultimate configuration of a four-lane divided roadway with two-lane frontage roads in each direction south of US 190
- An ultimate configuration of a four-lane divided roadway north of US 190
- And a northbound 13-foot outside shoulder to be used as a hurricane evacuation lane
- Bicycle and pedestrian accommodations will be considered.

This proposal is preliminary and subject to change.

Project Purpose and Need

The purpose of the US 69 project is to provide a relief route to support safe and efficient south/north movement of people and goods between Colmesneil and Warren.

The proposed project aims to do the following:

- Provide a south-north evacuation route for the growing population of Southeast Texas that meets current standards
- Improve safety by providing a relief route to reduce congestion on existing US 69
- Address demand from freight traffic
- Provide an alternate/secondary route from south of Warren to north of Colmesneil

The purpose of the proposed project is to improve safety by reducing the number of conflict points along the corridor and enhance mobility by providing a more efficient higher-capacity roadway for emergency evacuation as well as freight movements.

Slide 5. Purpose and Need

The purpose of the proposed project is to improve safety and enhance mobility by increasing road/roadway capacity for emergency evacuations and freight traffic.

This project is needed to:

- Provide a south-north evacuation route for the growing population of Southeast Texas that meets current standards
- To improve safety by providing a relief route to reduce congestion on existing US 69
- To address demand from freight traffic and
- To provide an alternate/secondary route from south of Warren to north of Colmesneil

Future Traffic Prediction



| | Year | Vehicles per day |
|-------------------------------|------|---|
| Colmesneil Traffic Prediction | 2027 | 6,000  |
| | 2047 | 8,000  |
| | 2057 | 9,000  |
| Woodville Traffic Prediction | 2027 | 13,500  |
| | 2047 | 18,000  |
| | 2057 | 20,000  |
| Warren Traffic Prediction | 2027 | 9,000  |
| | 2047 | 12,500  |
| | 2057 | 14,000  |

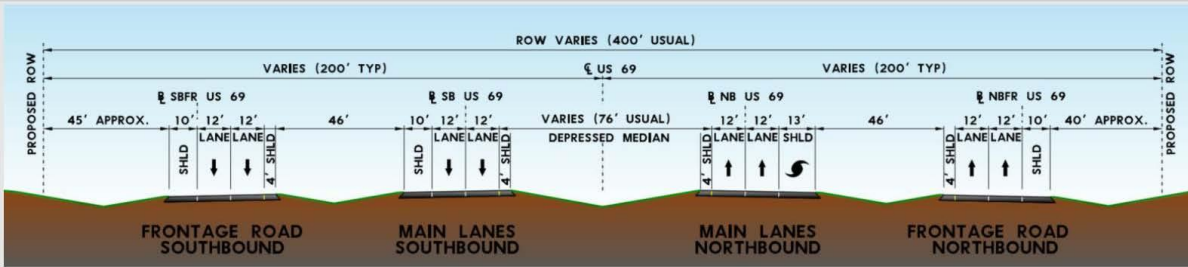
This relief route project would help alleviate traffic congestion in Woodville for future years. Traffic prediction developed by WSP USA.

Slide 6. Future Traffic Prediction

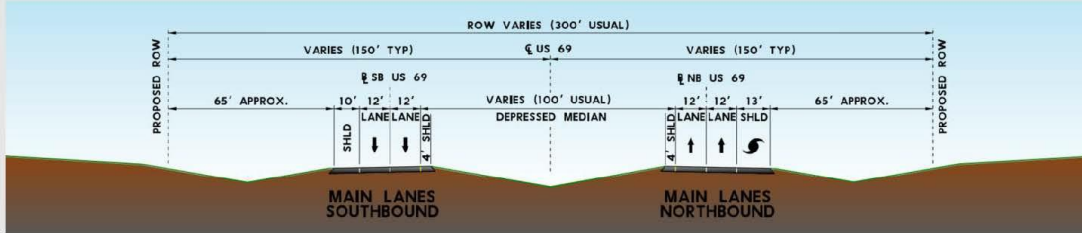
The proposed project would improve connectivity and travel times for vehicles travelling US 69.

For a 30-year study period beginning in 2027, which is the proposed design year, traffic is expected to increase significantly by 50%, 48% and 55% in Colmesneil, Woodville, and Warren, respectively. These increases in traffic volume are expected to increase congestion along existing US 69. This relief route project would help alleviate traffic congestion in Woodville for future years.

Proposed Typical Section



Ultimate preliminary configuration of a four-lane divided roadway with two-lane frontage roads in each direction south of US 190



Ultimate preliminary configuration of a four-lane divided roadway north of US 190

Preliminary and subject to change.

Slide 7. Proposed Typical Section

Let's switch gears now and talk about the proposed roadway design.

Within the project limits, the ultimate configuration of the US 69 relief route south of US 190 would consist of: two 12-foot lanes in each direction with 4-foot inside shoulders, an approximately 20-foot wide median, a northbound 13-foot outside shoulder to be used as a hurricane evacuation lane, and a southbound 10-foot outside shoulder.

This section would also include a two-lane frontage road in each direction.

Within the project limits, the ultimate configuration of the US 69 relief route north of US 190 would consist of: two 12-foot lanes in each direction with 4-foot inside shoulders, an approximately 20-foot wide median, a northbound 13-foot outside shoulder to be used as a hurricane evacuation lane, and a southbound 10-foot outside shoulder.

This typical section is preliminary and subject to change.

Environmental Process

A comprehensive environmental study will be conducted in compliance with the National Environmental Policy Act. The study will identify and assess potential impacts to the natural and human environment, including the following:



**Air
quality**



**Community
Impacts**



**Hazardous
material sites**



**Historical &
archeological
resources**



**Induced
growth**



**Land use &
parkland**



**Threatened &
endangered species**



**Traffic
noise**



**Vegetation &
wildlife**



**Water
resources**

The environmental review, consultation, and other actions required by applicable Federal environmental laws for this project are being, or have been, carried out by TxDOT pursuant to 23 U.S.C. 327 and a Memorandum of Understanding dated Dec. 9, 2019, and executed by FHWA and TxDOT.

Slide 8. Environmental Process

The environmental technical reports and Environmental Assessment for this project will comply with the National Environmental Policy Act. In addition, the environmental review, consultation, and other actions required by applicable Federal environmental laws for this project are being, or have been, carried out by TxDOT pursuant to 23 United States Code 327.

This also includes the Memorandum of Understanding dated December 9, 2019, and executed by the Federal Highway Administration and TxDOT.

The environmental studies have identified and assessed potential impacts of the proposed project to the natural and human environment including air quality; archeological resources; non-archeological historic properties; community and socioeconomic impacts; biological resources including threatened and endangered species and vegetation types; hazardous materials; indirect and cumulative effects; traffic noise; water resources; induced growth; and protected lands.

Right-of-Way (ROW) Acquisition Information



Please visit www.txdot.gov for more information about the Uniform Act and TxDOT Relocation Assistance Program information

- Additional ROW as well as construction and drainage easements are anticipated but have not been determined at this time
- The proposed project could potentially cause displacements
- ROW acquisition and relocation would be conducted in accordance with the Federal Uniform Relocation and Real Property Acquisition Policies Act of 1970

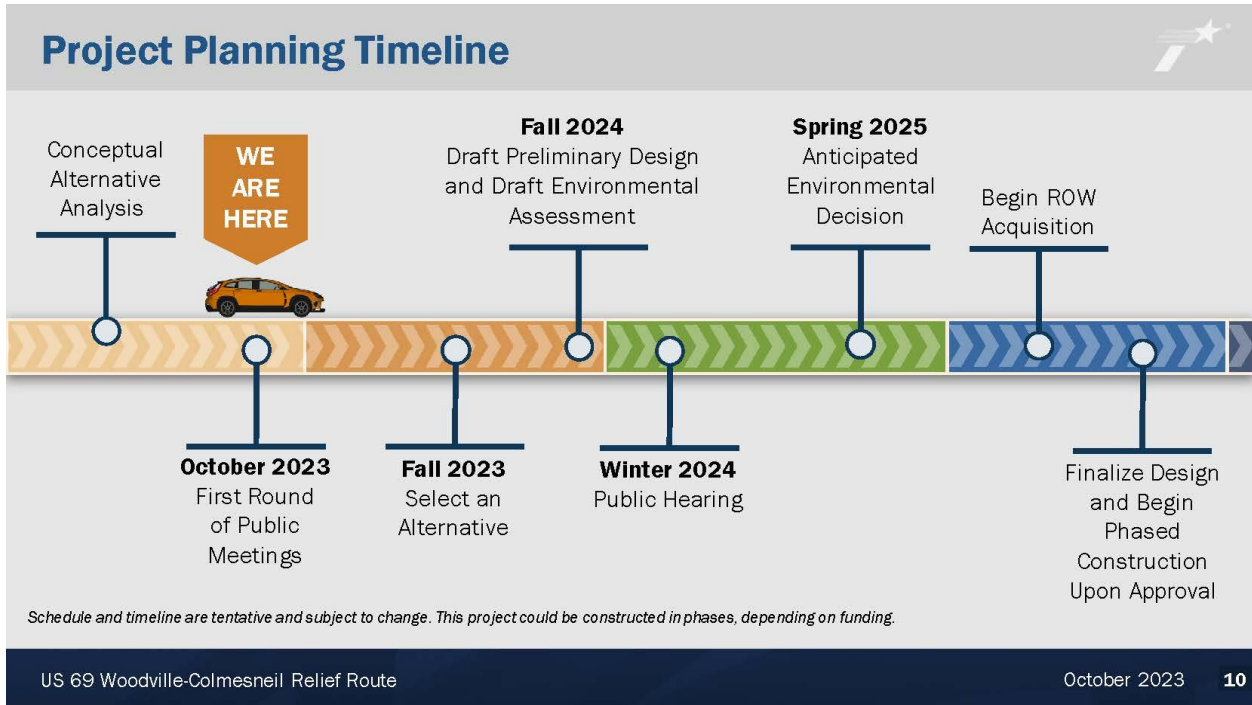
Slide 9. Right of Way Acquisition Information

Let's talk about the right-of-way acquisition process.

As we are in the preliminary stages of our conceptual alternatives, the extent of Right-of-Way to be acquired has not been determined at this time. This proposed project could potentially have displacements.

ROW acquisition and relocation would be conducted in accordance with the Federal Uniform Relocation and Real Property Acquisition Policies Act of 1970.

We invite you to review more information about the TxDOT Relocation Assistance Program concerning services and benefits for displaced persons and businesses if needed on the TxDOT website on www.txdot.gov.



Slide 10. Project Timeline

Now we want to highlight the estimated project timeline.

Currently, conceptual design of the alternatives is underway awaiting public input in the following weeks. After the initial public meetings, we will review public input and will propose a preferred alternative, which will be presented at a public hearing. Based upon results of the public input and environmental analysis, the draft environmental assessment would be presented Fall of 2024.

Upon completion and approval of the environmental assessment, environmental decision is anticipated Spring of 2025. Right-of-way acquisition and utility relocations can be initiated after environmental clearance and are expected to be complete upon approval of the design and prior to construction.

Please note, this timeline is preliminary and subject to change.

How to Comment



Give us your input



Comment Forms

Access an online comment form via the TxDOT.gov virtual public meeting web page, keyword search: US 69 Woodville-Colmesneil Relief Route

Paper comment forms available at the in-person meeting and can be submitted via the comment form boxes.

Sign up for email updates by

- 1) Visiting www.txdot.gov
- 2) Search: US 69 Woodville-Colmesneil Relief Route
- 3) Click on Sign-up for updates



Email

bmtprojects@txdot.gov



Mail

TxDOT - Beaumont District
US 69 Woodville-Colmesneil Relief Route
8350 Eastex Freeway
Beaumont, TX 77708

Send a letter or print out the comment form available in the downloads section. Mail to the address above.

**Please submit
or postmark
comments by:**

**Friday,
Nov. 10, 2023**



If you have any questions or need additional information you may contact:

Lisa Collins, P.E., Transportation Planning and Development, TxDOT Beaumont District,
bmtprojects@txdot.gov or by phone (409) 898-5732.

US 69 Woodville-Colmesneil Relief Route

October 2023

11

Slide 11. How to Comment

TxDOT is committed to continuing our efforts to gain public feedback about this project. We understand that this virtual public meeting format is a bit different, so let's take a few minutes and explain the comment process – the most important part of this video.

The Beaumont District is asking the public to provide their comments in the following ways:

1. First, you can email your comments to: bmtprojects@txdot.gov or call the district office by phone at 409-898-5732.
2. Another option is to mail your comments:
You can do this by sending a letter or printing out the comment form available in the downloads section and mail to the TxDOT Beaumont District office, attention US 69 Woodville-Colmesneil Relief Route, located at 8350 Eastex Freeway in Beaumont, Texas 77708.
3. You can submit your comments online by visiting www.txdot.gov, keyword search US 69 Woodville-Colmesneil Relief Route. Next, click on the "Email TxDOT Beaumont District" button on the right side of the page
4. Lastly, we encourage the public to stay informed about the project in the following ways: First, sign up to receive email updates. Visit www.txdot.gov and in the upper-right hand corner click on the magnifying glass, enter: US 69 Relief Route in the search box. Click on the project page and enter your email address to sign up for project updates.

If you would like your comments to be part of the official public meeting record, please be sure to submit them no later than Friday, November 10, 2023. The responses to your

comments submitted during the comment period will be included in the online virtual public meeting summary report. This report will be posted to the TxDOT website as soon as it becomes available.

Online Engagement Site



Provide us your feedback!

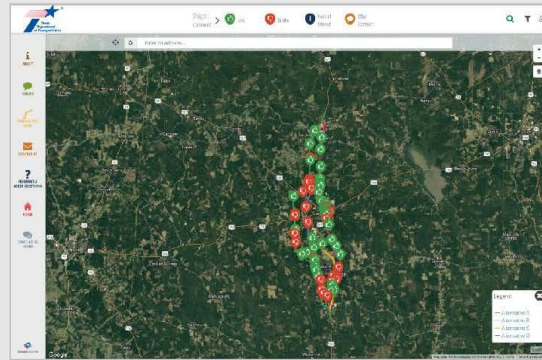


Interactive Comment Map and Survey on Online Engagement Site

Here you can:

- Mark areas of interest on an interactive map
- Indicate if you like or dislike a proposed route
- Take our survey
- Learn more about the purpose and need
- Review frequently asked questions

Access the online engagement site by visiting the project page at www.txdot.gov and search US 69 Woodville-Colmesneil Relief Route or by scanning the QR code.



Slide 12. Online Engagement Site

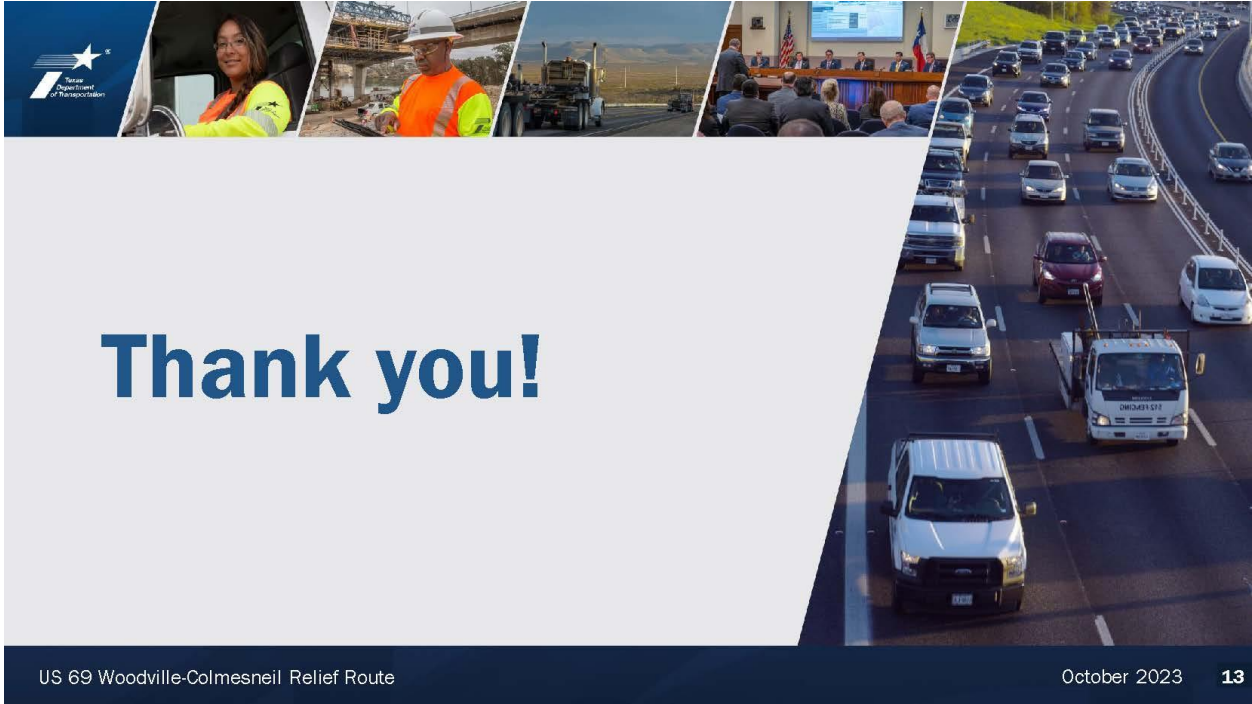
As an additional way to provide comments, we invite you to visit our online engagement site.

On the site you have the options to do the following:

- Mark areas of interest on an interactive map
- Take our survey
- Learn more about the purpose and need
- Review frequently asked questions

To access the online engagement site: Visit www.txdot.gov, keyword search US 69 Woodville-Colmesneil Relief Route or scan the QR code on this page.

Click on the “Share Feedback” button on the bottom-right side of the page.



Thank you!

Slide 14. Thank You

Thank you for watching! Don't forget to submit your comments by Friday, November 10, 2023. Thank you again and please, stay safe.

This concludes our presentation. Thank you.