



# Online Engagement Results

---

US 96

From RE 255 to Loop 149

CSJ 0064-07-044, etc.

Jasper County and Sabine County

October 5, 2020 – December 11, 2020

## Introduction

The Texas Department of Transportation (TxDOT) Beaumont District deployed a public online engagement survey to gather comments and input on proposed improvements to United States Highway (US) 96 widening (Expansion) project, from RE 255 in Jasper County to Loop 149 intersection in Sabine County. The approximately 6.5-mile proposed project would expand the existing rural 2-lane roadway (one lane in each direction) to a rural 4-lane rural, depressed median separated highway (2-lanes in each direction). The divided highway with a depressed earth median would merge to a rural 4-lane with a 16-foot flush paved median from just North of FM 1007 to the Loop 149 intersection in Sabine County. The proposed improvements will tie into a similar roadway configuration existing South at RE 255 and south into Hardin County. The proposed rural 4-lane configuration with the flush median at the North end of the project would merge back to the existing rural 2-lane facility in Sabine County.

The proposed project will improve a critical hurricane evacuation route, improve safety by accommodating projected traffic and freight growth, and improve access to and from the ports in Beaumont, Port Arthur, and Orange, Texas.

## Survey Engagement

The survey was developed to provide a community engagement opportunity without risk to public safety during the COVID-19 pandemic. Specifically, it was deployed to garner stakeholders' input, thoughts, and opinions about the proposed improvements. A total of 555 people responded to the survey over the 10-week period from October 5<sup>th</sup> to December 11<sup>th</sup>. The survey was internet-based with smart phone adaptability. This report contains information on the results of the US 96 public online survey.

## Outreach

To inform the public about the online survey, it was advertised in local publications and through traditional media and social media outlets. Outreach efforts included direct notices sent to the local community, elected officials, and various local regional stakeholders; notices on [txdot.gov](http://txdot.gov), Facebook, local and regional newspapers and magazines and media outlets.

The survey was advertised/noticed using the methods outlined below.

- The [txdot.gov](http://txdot.gov) project information page, keyword search "US 96".
- Traditional and social media: TxDOT's Communication Division and District Public Information Officers broadcast notices through news releases, email, Facebook, and Twitter.
- Personalized direct email notifications to elected officials and local stakeholders including commercial entities, school districts, and others.
- A message in the utility bill from Brookeland Fresh Water District
- Newspaper/magazine/online advertisements: The Peddler, Lakecaster Magazine, Jasper Newsboy, and The Beaumont Enterprise
- Television coverage: KTRE 9 Deep East Texas News Channel
- Direct USPS postcard notices to addresses along the US 96 project corridor.

## Overview

The five main pages of the online survey probed respondents based on the screens listed below.

Screen 1: WELCOME: TxDOT US 96 *from RE 255 in Jasper County to Loop 149 in Sabine County* – Introduced respondents to the US 96 proposed improvement project and invited them to share their opinions and comments. It outlined the project limits as well as the purpose and description of the improvements. It also allowed the reader to learn a bit of history about US 96, how it is currently utilized (hurricane evacuation, commerce, accessing recreational areas, etc) and geographic connections to this highway.

Screen 2: IDENTIFY PRIORITIES: What is More Important to You? *What transportation priorities are most important to you? Please rank your top three* – Respondents were presented with seven TxDOT goals and asked to rank their top three goals as they relate to this project. The goals were presented in random order, consisting of “promote economic development”, “improve safety”, “protect the environment”, “improve connectivity”, “maintain the highway”, and “improve hurricane evacuation” and “suggest other priority”. The “suggest other priority” prompted the user, upon selection, to comment. Each goal category, when selected and viewed, presented additional information to the respondent to inform their decision.

Screen 3: RATE ALTERNATIVES: Proposed Alternatives *Please rate the three alternatives* – Respondents were asked to rate three different alternatives currently being considered for design advancement. Each Alternative was presented with a header based on the alignment (widen east side, widen with a short description including potential impacts (private property, environmental, and utilities), estimated cost, estimated Right of Way needed, and potential displacements (commercial and residential). The user could also access a side-by-side graphic - “Click here to take a closer look at these alternatives”- showing the alternatives with similar information. Each respondent was asked to rate the alternatives on a scale from 1 star (least preferred) to 5 stars (most preferred).

Screen 4: INTERACTIVE MAP: Interactive Map *Please drag and drop at least 3 markers on the map* - The respondent was presented five markers – “traffic issue”, “hurricane evacuation concern”, “safety issue”, “environmental issue”, and “other” – and asked to use at least three to inform the project team about issues and concerns along the project corridor. The “other” marker prompted the user, upon selection, to comment.

Screen 5: WRAP UP: Stay Involved *Tell us a bit about yourself. Please click finish when you are done.* – Respondents were prompted to provide zip code, relationship to US 96 (property owner, business owner, commuter, resident, employee, visitor, or other), frequency of US 96 use/travel, how they heard about the survey, and finally a general query to capture other comments. They were also provided a link to the [www.TxDOT.gov](http://www.TxDOT.gov) project page for more information.

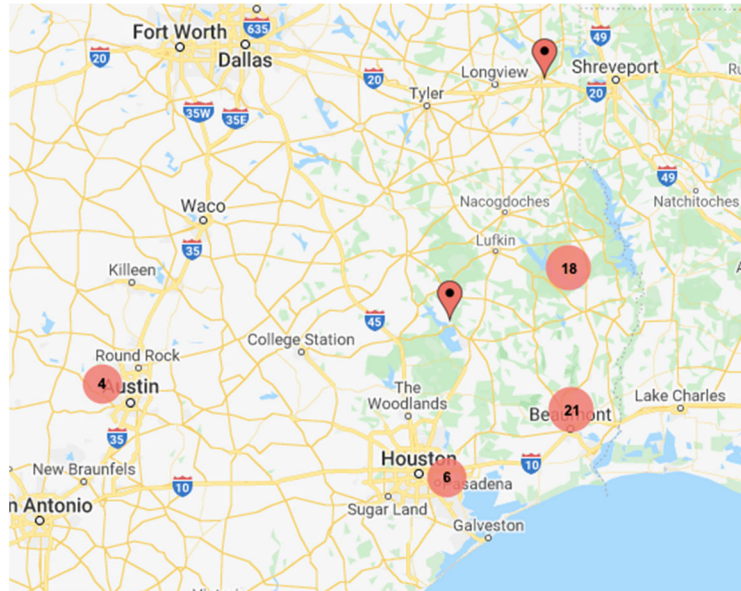
All the screens allowed participants to learn more about the subject matter by clicking the “i” button. Four of the five screens allowed respondents to submit additional comments.

## Who Participated and How Where They Informed?

The US 96 survey asked respondents to answer zip code, connection to corridor, frequency of use, and how they heard about the survey effort.

### Zip Code

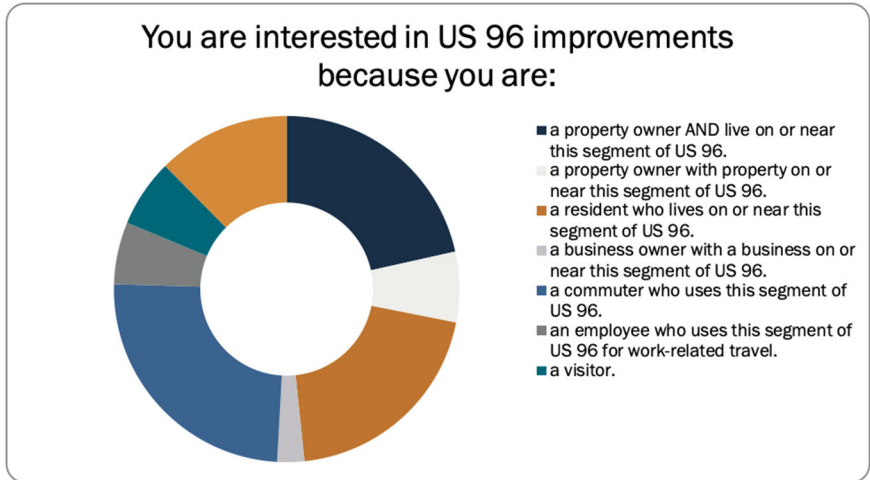
The 383 respondents, who completed the zip code query, represented 51 zip codes in Texas and three outliers in Georgia (USA), and the countries of Germany and France. The map below shows the zip codes located in Texas.



### Connection to Corridor

The 395 respondents who completed the query about the connection to the corridor, 201 were property owners, residents, or business owners. The table and graph below illustrate the details.

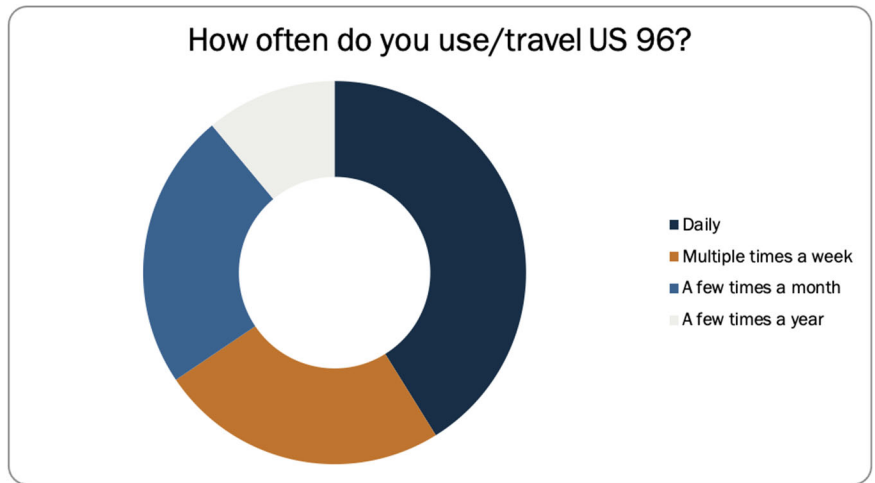
<b>You are interested in US 96 improvements because you are:</b>	<b>Count</b>
a property owner AND live on or near this segment of US 96.	85
a property owner with property on or near this segment of US 96.	26
a resident who lives on or near this segment of US 96.	80
a business owner with a business on or near this segment of US 96.	10
a commuter who uses this segment of US 96.	97
an employee who uses this segment of US 96 for work-related travel.	23
a visitor.	25
Other	49



**Frequency of Use**

Of the 389 respondents who completed this query, 255 use the corridor daily or multiple times a week. Ninety-one of the respondents use it a few times a month and the remaining 43 that answered it, use it a few times a year. The table and graph below show the details.

How often do you use/travel US 96?	Count
Daily	160
Multiple times a week	95
A few times a month	91
A few times a year	43



**How Did They Hear About The Survey?**

The number of respondents who completed this query was 377. Of these respondents, 324 got notice directly from the TxDOT team’s outreach efforts. The remaining 53 were informed of the survey by word of mouth or an email forwarded from someone outside of TxDOT. The table below shows the specifics.

How did you hear about this survey?	Count
TxDOT postcard mailed to my address	28
TxDOT email	56
Email from someone else forwarded to me	30
Social media (Facebook, Twitter)	142
Word of mouth	23
Newspaper or television	98

## US 96 Online Survey Queries and Responses

As previously noted, the survey platform was set up with five main screens. The query and screenshot for each are below along with the responses. Specific unique comments and TxDOT responses can be found in the comment response matrix.

### Screen 1: WELCOME

*TxDOT US 96 From RE 255 in Jasper County to Loop 149 in Sabine County*

Pop Up Box: **TxDOT US 96** Please take a few minutes to tell us what you think and help us better understand issues that are important to you. We appreciate your input!

The first screen welcomed the respondent to the survey. It outlined the project limits and the intended purpose of the proposed improvements.



### Additional Background on Screen 1 Sliders

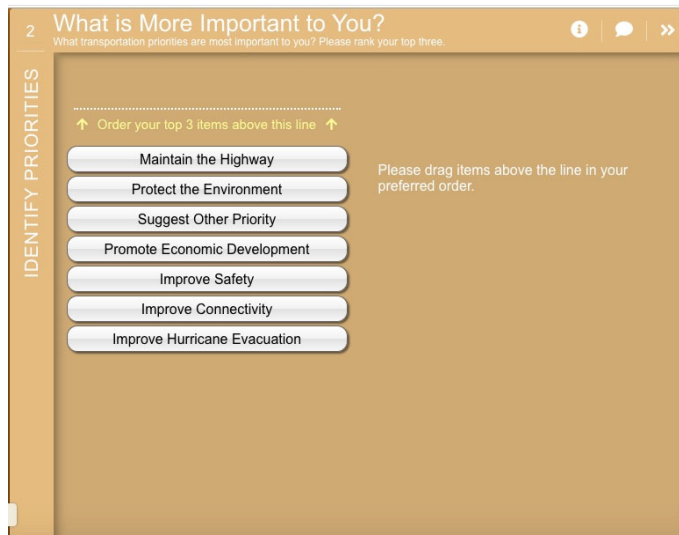
- **Proposed Improvements:** The approximately 6.7-mile proposed project would widen the existing roadway from two lanes to a four-lane rural divided highway (median-separated). This roadway segment would also tie into a similar roadway configuration at the intersection of the southern project limit, RE 255 in Jasper County.
- **US 96 Connections:** US 96 serves as a major hurricane evacuation and a strategic military route; it also transports the traveling public and commercial goods. This highway starts in Fort Polk in Louisiana; continues to the Red River Army Depot near Texarkana in Texas; then the Port of Beaumont; and ends in the city of Port Arthur.
- **Did you know?** US 96 is approximately 117 miles. The highway route was originally planned from Wharton to Victoria to Beeville, and to Falfurrias, and would have terminated in Brownsville. This may be the reason its designation goes against naming conventions, as most even-numbered highways run east to west, not north to south.

## Screen 2: IDENTIFY PRIORITIES

*What is more important to you? What Transportation priorities are most important to you? Please rate your top three.*

Pop Up Box: **What is More Important to You?** What transportation priorities are most important to you? Please drag items above the line in your preferred order.

The second screen delves into the queries and asked the respondent to prioritize a set of items related to the corridor improvements. Each item was listed, and the respondent was provided additional information about each by clicking on the items.



### Priority Items and Corresponding Information

#### *Improve Connectivity*

- I want improved travel times and connectivity while traveling along US 96.

#### *Improve Safety*

- I want to reduce crashes, lessen crash severity, and enhance coordination with first responders.

#### *Protect the Environment*

- I want to preserve, protect, as well as avoid and minimize impacts to environmental and cultural resources (streams and wetlands); threatened and endangered species; historical resources (buildings and historic districts); and other archaeological resources (artifacts and cemeteries).

#### *Improve Hurricane Evacuation*

- I want US 96 to serve as an effective evacuation route in the event of a major hurricane.

#### *Promote Economic Development*

- I want US 96 to continue to promote and enhance economic development in this region.

#### *Maintain the Highway*

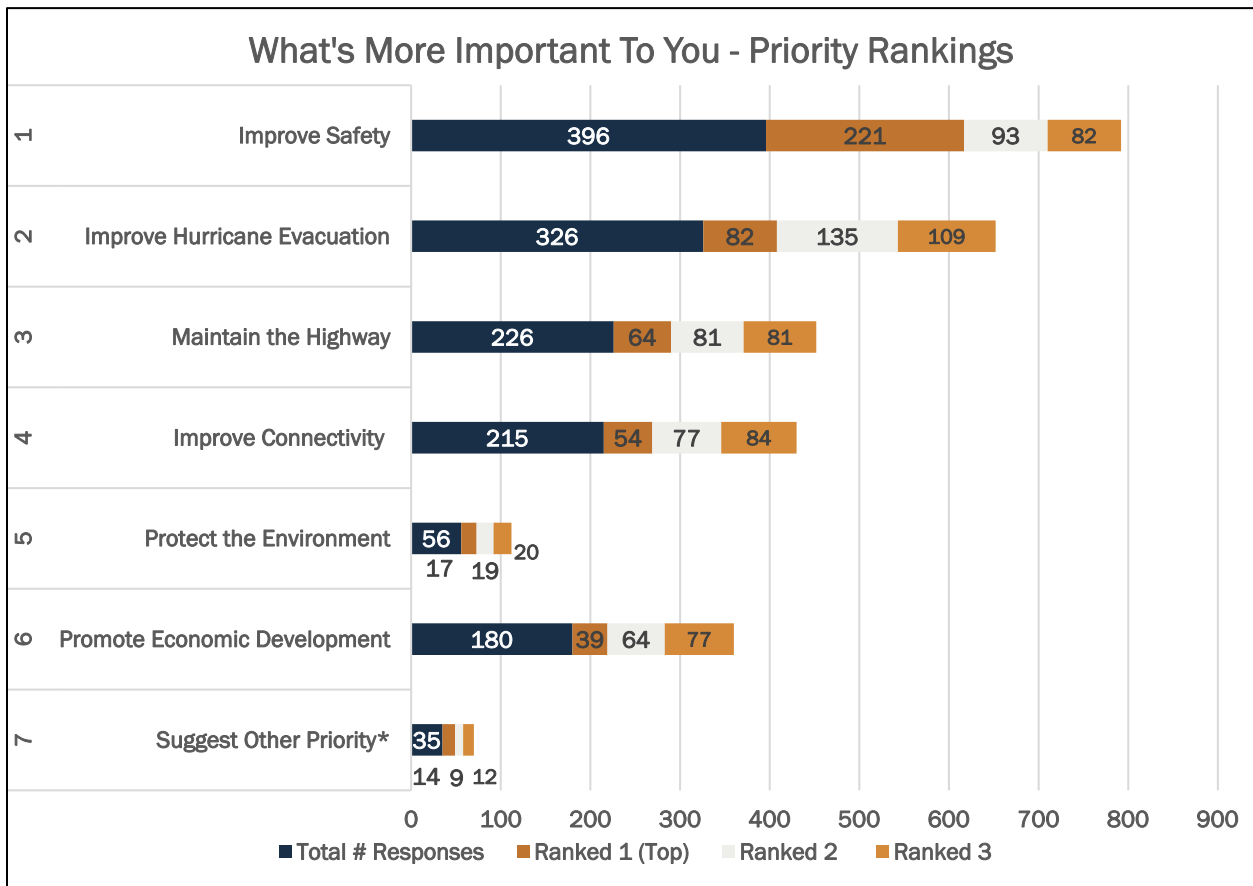
- I want US 96 maintained on an ongoing basis.

#### *Suggest Other Priority*

- Use the comment feature below to suggest a priority of your own.

### Survey Responses

The top priorities, according to the respondents' rankings, were Improve Safety, Improve Hurricane Evacuation, and Maintain the Highway closely followed by Improve Connectivity. See the chart below for more details. Comments related to the Identify Priorities exercise can be found under the "Survey Screen 2 Identify Priorities" column in the Comment Response Matrix.



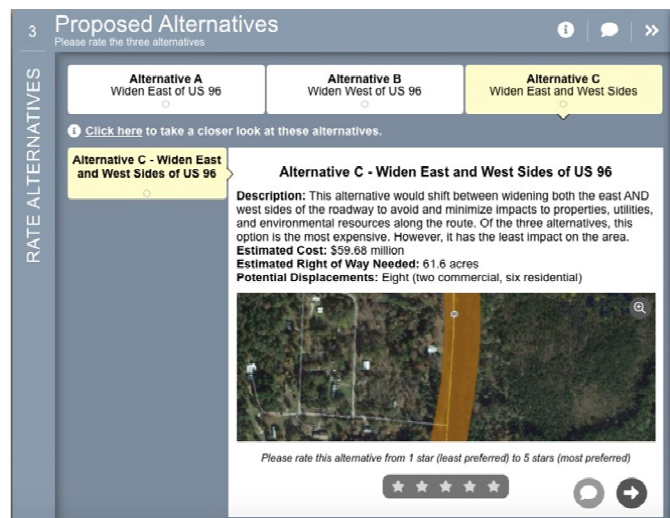
### Screen 3: RATE ALTERNATIVES

*Proposed Alternatives: Please rate the three alternatives*

#### Pop Up Box: Proposed Alternatives

Please rate the 3 alternatives. Please give your input on the items you feel the most strongly about.

The third screen presents the general alignments for the improvements. The three alternatives are being evaluated and each alternative was presented with information on cost, right of way needed, and potential displacements. The preferred alternative will be based on public input and the exact impacts will be known once the field studies are complete and the design is advanced to include more detail. The survey also included a graphic that showed the alternatives using a side-by-side comparison. This graphic was accessible by clicking on a link – “Click here to take a closer look at these alternatives.”



## Proposed Alternatives

### **Alternative A: Widen East Side of US 96**

**Description:** This alternative would focus widening efforts on the easternmost side of the existing roadway. Of the three alternatives, this option is the least expensive. However, it creates the greatest impact to properties, utilities, and environmental resources on the eastern side of US 96.

**Estimated Cost:** \$59.25 million

**Estimated Right of Way Needed:** 65.78 acres

**Potential Displacements:** Eight (two commercial, six residential)

*Please rate this alternative from 1 star (least preferred) to 5 stars (most preferred)*

### **Alternative B: Widen West Side of US 96**

**Description:** This alternative would focus widening efforts on the westernmost side of the existing roadway. Of the three alternatives, this option requires the greatest amount of right of way with property impacts and commercial/residential displacements. It would also have the greatest impact to utilities and environmental resources on the western side of US 96.

**Estimated Cost:** \$59.44 million

**Estimated Right of Way Needed:** 71 acres

**Potential Displacements:** Ten (eight commercial, two residential)

*Please rate this alternative from 1 star (least preferred) to 5 stars (most preferred)*

### **Alternative C: Widen East and West Side of US 96**

**Description:** This alternative would shift between widening both the east AND west sides of the roadway to avoid and minimize impacts to properties, utilities, and environmental resources along the routes. Of the three alternatives, this option is the most expensive. However, it has the least impact on the area.

**Estimated Cost:** \$59.68 million

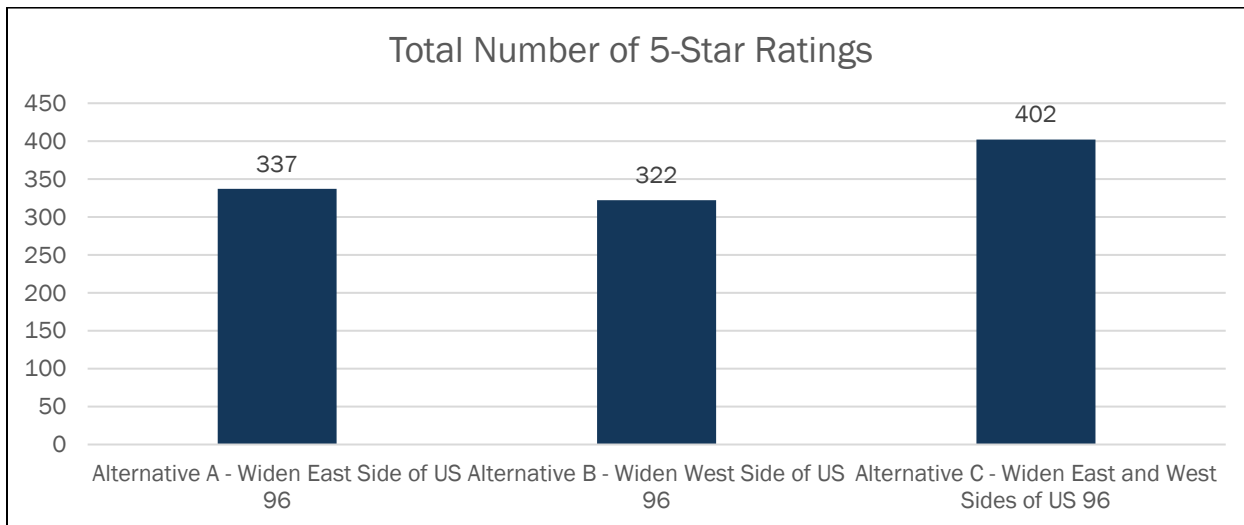
**Estimated Right of Way Needed:** 61.6 acres

**Potential Displacements:** Eight (two commercial, six residential)

*Please rate this alternative from 1 star (least preferred) to 5 stars (most preferred)*

## Survey Responses

The survey respondents rated alternatives with 1,061 ratings of 5-stars (most preferred). Of this 1,061, Alternative C received the most followed by Alternative A and Alternative B which collected the least number of 5-star ratings. See the chart below for details. Comments related to the Preferred Alternatives exercise can be found under the "Survey Screen 3 Rate Alternatives" column in the Comment Response Matrix.

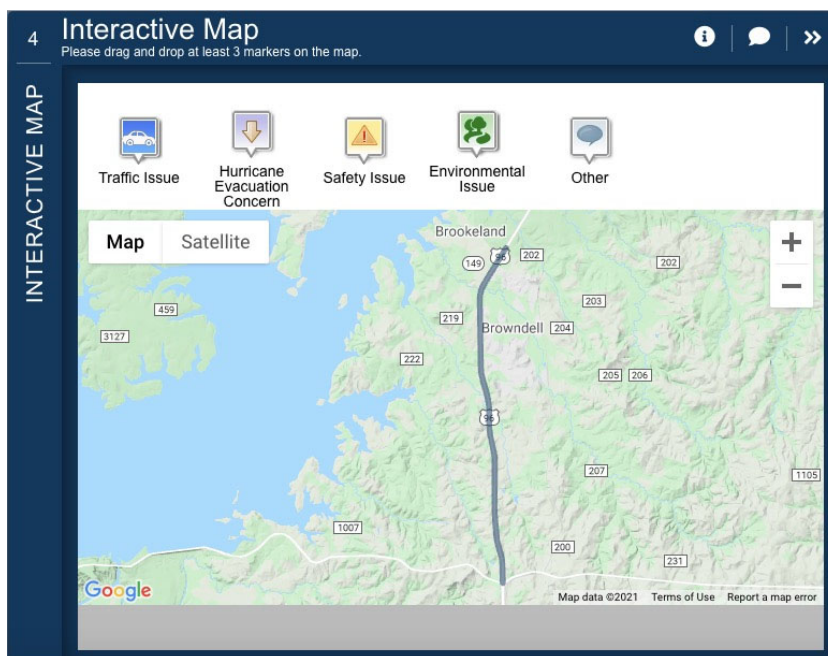


**Screen 4: INTERACTIVE MAP**

*Interactive Map: Please drag and drop at least 3 markers on the map.*

Pop Up Box: **Interactive Map** Please drag and drop at least three markers on the project corridor map below. Once you drag the marker to the designated location, add your comments to explain the marking.

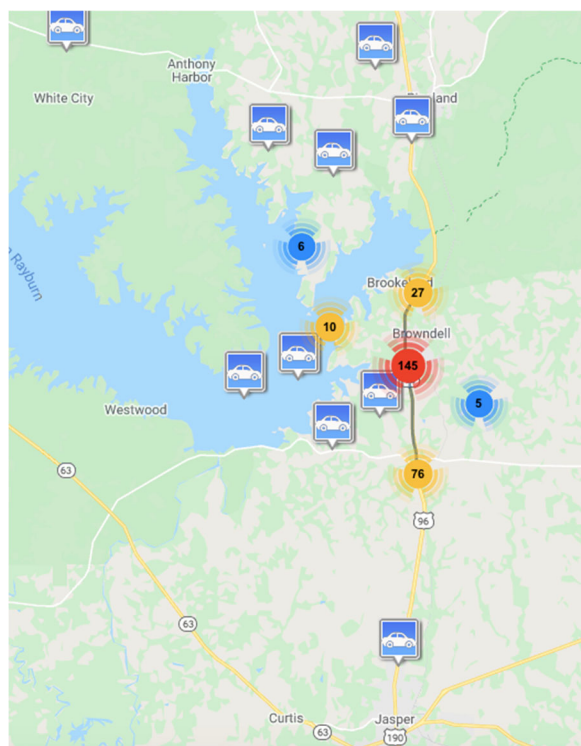
The fourth screen of the online survey asked respondents to drag and drop pin markers for various categories – traffic issue, hurricane evacuation concern, safety issue, environmental issue, and other. The respondents’ information is used by the planning team to confirm initial findings and anticipate issues ahead of additional field (on-site, in the corridor) research and exploration.



Survey Responses

The survey respondents plotted 981 markers. The table and maps below show the distribution of the markers and the number of comments provided across the categories. Subsequently, representative comments for each category are listed. Comments related to the Interactive Map exercise can be found under the “Survey Screen 4 Interactive Map” column in the Comment Response Matrix (CRM). Markers placed outside the corridor boundaries are included in the table and can be found in the CRM.

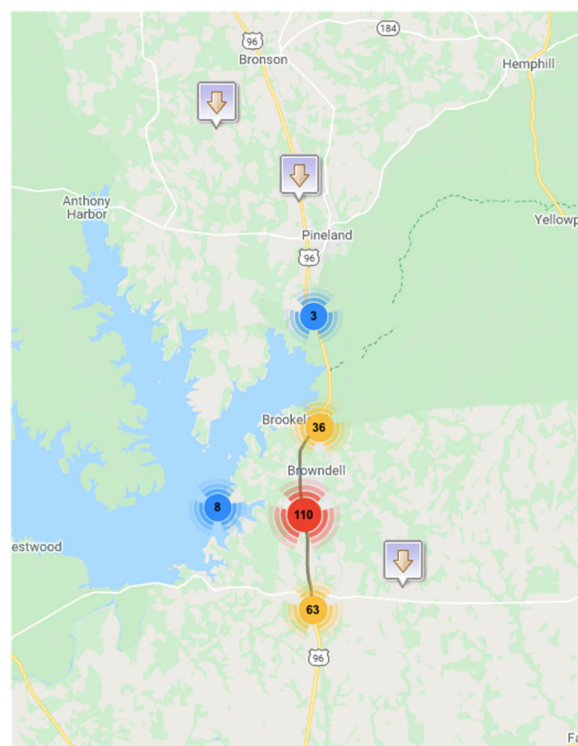
Interactive Map Marker Type	Total Count	Total Comments
Traffic Issue	281	155
Hurricane Evacuation Concern	224	106
Safety Issue	375	252
Environmental Issue	48	28
Other	53	37
<b>TOTAL</b>	<b>981</b>	<b>578</b>



*Traffic Issue Map Markers*

### Traffic Issue Comments

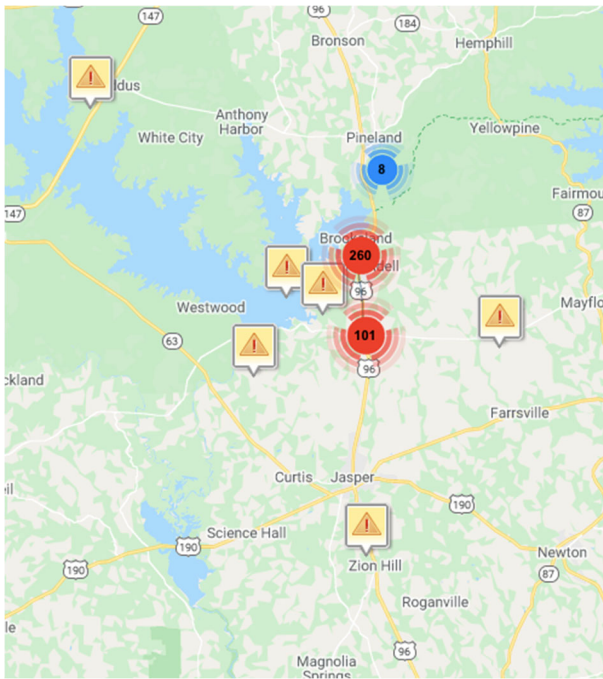
- Wrecks/Accidents
- Traffic/Congestion/Bottleneck
- 18-wheelers/Boat traffic/RV traffic
- FM 1007/Yellow light not enough
- RE 255 intersection/Needs traffic light
- Limited passing area/Needs 4 lanes, turning lanes/Sight distance issues
- Speed limits need adjusting



*Hurricane Evacuation Concern Map Markers*

### Evacuation Concern Comments

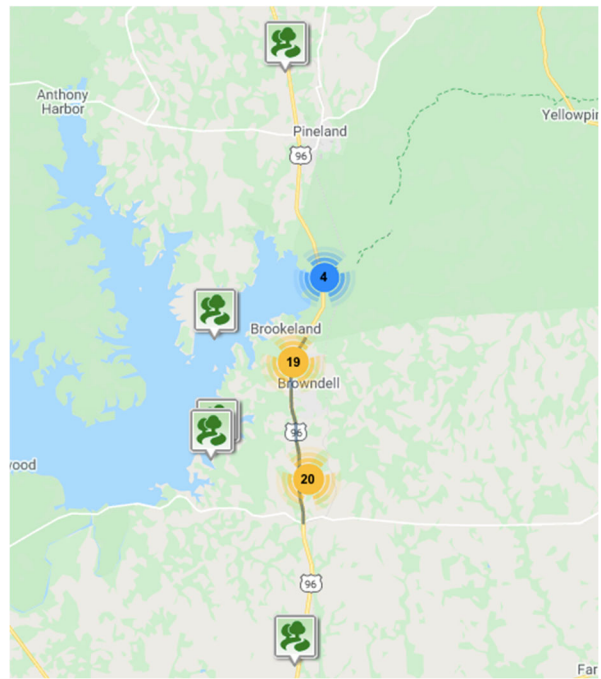
- Backups/congestion/traffic along two-lanes
- Traffic/Congestion during evacuation
- Road narrows/Needs to be widened
- RE 255 drivers don't know where to go
- Increase project limits further north



Safety Issue Map Markers

### Safety Issue Comments

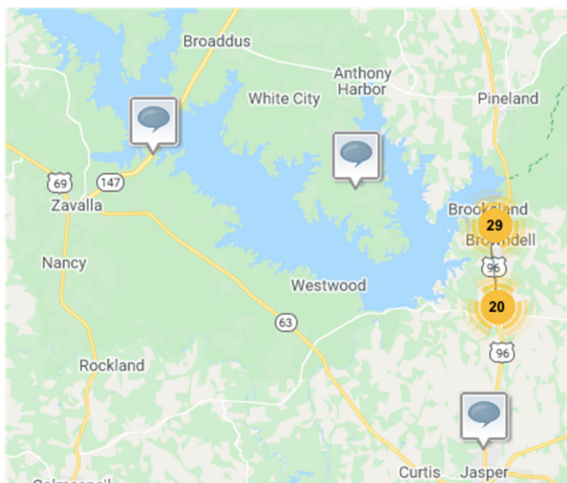
- FM 1007 intersection/sight distance issues/dangerous/needs stop light
- Loop 149 traffic goes to schools/children in area
- RE 255 intersection/Needs traffic light
- Two lanes are unsafe
- Logging trucks/Boats and campers
- Pipeline Hill is dangerous during rain events



Environmental Issue Map Markers

### Environmental Issue Comments

- Protect green space/forest land/trail
- Protect wetlands/lakes/streams/watershed
- Drainage issues from car wash
- Flood prone areas
- Giant Red Cockaded Woodpeckers in area
- Pipeline Hill has an abandoned pipeline



Other Map Markers

### Other Comments

- Need long turn lanes for boat/RVs/trucks
- Residential and commercial displacement concerns
- Extend improvements further north
- Noise concerns
- Add bike lanes
- Road maintenance needed
- Shoulders need to be wider
- Improve Loop 149 intersections

## Screen 5: WRAP UP

*Stay Involved: Tell us a bit about yourself. Please click finish when you are done.*

Pop Up Box: **Stay Involved** Thank you for your input so far, it has been recorded. Please answer a few optional questions. This helps us understand your input better. Your private information will be kept private. Use sharing tools (on the right) to spread the word!

The responses to the zip code, connection to US 96 and how often traveled, and how participants heard about the survey questions are summarized in the Overview section presented earlier in this report. Comments included support for the mobility and safety aspects of the project, general opposition to the project, desires to extend the improvements further north, concerns about improvements

impacting private property (residential and commercial), preserve environmental aspects including historic and archaeological sites as well as gratitude for asking the community's opinion and ease of survey participation.

## US 96 Online Survey Summary of Findings

Respondents to the survey, for the most part, were supportive of the proposed project improvements. Respondents' priorities for the project corridor include supporting safety improvements, hurricane evacuation improvements, maintaining the highway and improving connectivity locally and regionally. Many noted the narrow highway and the major intersections (especially FM 1007 and CR 255) as dangerous and congested during daily commutes as well as hurricane evacuations. The preferred alternative, based on the survey findings, is to use the alternative that requires right of way from the both the east and the west side of the existing roadway. Respondents noted concerns about private property impacts (residential and commercial), have concerns about protecting the nearby and adjacent waterways as well as overall environmental impacts to the forest and habitat.

## Next Steps

TxDOT Beaumont District will take the survey findings into consideration as the design evolves to the 60 percent stage for the now favored Alternative 3 Alignment. The Alternative 3 schematic will now expand on optimizing the design profile to minimize the overall project's impact and to be followed by the environmental and technical fieldwork. Property owners and the public will have additional opportunities to comment before the design is final.

**US 96 Widening Project  
MetroQuest Survey  
Comment/Response Matrix**

Comment #	Date Received	Source	MQ Screen	Comment Topic(s)	Comment	Response
1	11/30/2020	Email	NA	General Comment	Great idea! Especially, if help the truckers who seems to own the road these days.	Comment noted.
2	12/14/2020	Email	NA	Stay Involved	I would like to know when the project ID 006407044 will start construction phase. I received the survey in the mail. What businesses will be effected [sic] with this project as well? I'm a resident and a business owner in the area.	Currently, the project is scheduled to begin in 2027. Information about the project including summaries of public involvement and project drawings will be posted on the TxDOT project page at: <a href="https://www.txdot.gov/inside-txdot/projects/studies/beatmont/us-96-from-re-255-north-to-loop-149.html">https://www.txdot.gov/inside-txdot/projects/studies/beatmont/us-96-from-re-255-north-to-loop-149.html</a>
3	10/19/2020	MetroQuest	2: Identify Priorities	Outside Limits	Hey 96 should be 4 lane from Jasper to hwy 59	Comment noted.
4	10/19/2020	MetroQuest	2: Identify Priorities	Safety	Wider roads and a stop light at 1007 and 96	Comment noted.
5	10/19/2020	MetroQuest	2: Identify Priorities	Safety	make a signal light at junction of hwy 1007 and hwy 96 or make the intersection a FOUR WAY STOP like at hwy 63 / hwy 255 junction...	Safety analyses will continue throughout design and any recommended safety enhancements as a result of those analyses would be included in the project.
6	10/19/2020	MetroQuest	2: Identify Priorities	Safety	Need overpass at corner of 96 & 1007. Too much traffic at that spot and you can't always see a big truck coming over the hills while trying to watch for cars pulling out of the corner store . Way too many accidents there. Also need something done to fix the hwy96@219. Many accidents and deaths because you can't see what's coming over that hill and trying to turn onto 219. Extremely deadly area	Safety analyses will continue throughout design and any recommended safety enhancements as a result of those analyses would be included in the project.
7	10/19/2020	MetroQuest	2: Identify Priorities	Safety	Please add a turning lane, there are a lot of subdivisions on this route, its very dangerous to get off the highway to go home. Remember that the entrance to 149 loop on both sides go to the brookeland school. Yall need to cut the hill down at the Lakeland addition, also improve 96 and 1007 intersection a lot of wrecks happen there all the time, and do away with the drop off shoulders they hold water and are dangerous if people over correct on them, they shouldn't be approved on any road .	Safety analyses will continue throughout design and any recommended safety enhancements as a result of those analyses would be included in the project.
8	10/19/2020	MetroQuest	2: Identify Priorities	Maintenance	We have a lot of big truck traffic and a lot of tourists that use this highway, pleas maintain it.	Comment noted.
9	10/19/2020	MetroQuest	2: Identify Priorities	Environment	Please be careful there are two natural creek's that run through this route, please try not do so much damage. They feed into lake sam Rayburn.	Comment noted.
10	10/19/2020	MetroQuest	2: Identify Priorities	Outside Limits	improve us190 across Dam B	This comment is for an area outside of the proposed project limits. Further information on other projects in the TxDOT Beaumont District, please visit: <a href="https://www.txdot.gov/inside-txdot/projects/project-tracker.html">https://www.txdot.gov/inside-txdot/projects/project-tracker.html</a>
11	10/19/2020	MetroQuest	2: Identify Priorities	Safety	Provide a turning lane to smaller roads to prevent wrecks from happening.	Safety analyses will continue throughout design and any recommended safety enhancements as a result of those analyses would be included in the project.
12	10/19/2020	MetroQuest	2: Identify Priorities	Outside Limits	Improve military connectivity between the Ports of Beaumont, Orange and Port Arthur with military installations including Fort Polk and the Red River Army Depot.	This comment is for an area outside of the proposed project limits. Further information on other projects in the TxDOT Beaumont District, please visit: <a href="https://www.txdot.gov/inside-txdot/projects/project-tracker.html">https://www.txdot.gov/inside-txdot/projects/project-tracker.html</a>
13	10/19/2020	MetroQuest	2: Identify Priorities	Safety	Need overpass on Hwy96 @ 255.Very dangerous area with big trucks and drunk campers with boats.	Safety analyses will continue throughout design and any recommended safety enhancements as a result of those analyses would be included in the project.
14	10/19/2020	MetroQuest	2: Identify Priorities	Outside Limits	Expand roads all the way to Hemphill. Very dangerous.	Comment noted.
15	10/20/2020	MetroQuest	2: Identify Priorities	Traffic	Traffic bottlenecks due to no passing lanes	Comment noted.
16	10/20/2020	MetroQuest	2: Identify Priorities	Outside Limits	It would benefit many people in this area if a 4 lane was developed all the way to Pineland Texas due to the logging industry and traffic.	Comment noted.
17	10/20/2020	MetroQuest	2: Identify Priorities	Congestion	Many evacuees use this route to evacuate. A 4 lane highway would improve flow and could possibly be used to open 4 lanes heading north if needed.	The purpose of the project is to provide a more reliable transportation and hurricane evacuation route, to enhance connectivity and mobility, and to enhance safety. US 96 within the Beaumont District is a critical part of the strategic freight network and provides hurricane evacuation capacity for Southeast Texas and neighboring areas.
18	10/20/2020	MetroQuest	2: Identify Priorities	Safety	More traffic lanes northbound	Comment noted.
19	10/20/2020	MetroQuest	2: Identify Priorities	Safety	Developing a 4 lane highway will improve safety and flow in morning commutes. Many log trucks heading to the mill in Pineland cause slow moving traffic and dangerous motorist passing on the two lane highway.	Comment noted.
20	10/20/2020	MetroQuest	2: Identify Priorities	Safety	I've lived in Brookeland my whole life and that stretch of highway is so dangerous. It should have been a 4lane years ago. Please make it a 4lane	Comment noted.
21	10/20/2020	MetroQuest	2: Identify Priorities	Maintenance	Maintain better than they do know	Comment noted.

22	10/20/2020	MetroQuest	2: Identify Priorities	Economy	More economic development for the area	TxDOT aims to develop and operate an integrated transportation system that provides reliable and accessible mobility and enables economic growth.
23	10/20/2020	MetroQuest	2: Identify Priorities	Environment	Beautiful area that would have to be destroyed if widened.	Comment noted.
24	10/20/2020	MetroQuest	2: Identify Priorities	Right of Way	Please pay the property owners to replace fences , the additional right of way needed including landscaping/trees/mail box replacement.	If TxDOT determines that a certain parcel of property is necessary for construction of the proposed project, the property owner would be contacted. For more information about the right of way acquisition process and your rights as a property owner, please visit: <a href="https://www.txdot.gov/inside-txdot/division/right-of-way.html">https://www.txdot.gov/inside-txdot/division/right-of-way.html</a>
25	10/20/2020	MetroQuest	2: Identify Priorities	Economy	Current homes and Business in the area is the priority of this community and the projected paths remove to much for such a small community. I do not see a feasible outcome for this project.	TxDOT aims to develop and operate an integrated transportation system that provides reliable and accessible mobility and enables economic growth.
26	10/20/2020	MetroQuest	2: Identify Priorities	Right of Way	Protect local businesses an homes. There is a Post Office in this location that is very needed.	If TxDOT determines that a certain parcel of property is necessary for construction of the proposed project, the property owner would be contacted. For more information about the right of way acquisition process and your rights as a property owner, please visit: <a href="https://www.txdot.gov/inside-txdot/division/right-of-way.html">https://www.txdot.gov/inside-txdot/division/right-of-way.html</a>
27	10/20/2020	MetroQuest	2: Identify Priorities	Outside Limits	NEED TO GO ALL WAY TO 59	Comment noted.
28	10/20/2020	MetroQuest	2: Identify Priorities	General Comment	Finish other jobs before considering another	Comment noted.
29	10/20/2020	MetroQuest	2: Identify Priorities	General Comment	Pay fewer taxes on new road. Short area , years of construction. Do not build.	Comment noted.
30	10/21/2020	MetroQuest	2: Identify Priorities	Traffic	Please add a turning lane for all the additions that are located on this route.	Safety analyses will continue throughout design and any recommended safety enhancements as a result of those analyses would be included in the project.
31	10/21/2020	MetroQuest	2: Identify Priorities	Safety/Traffic	Install traffic lights at intersections so drivers are forced to stop. I have family in Sabine Co.and travel FM 1007 and HWY 96 often. It is a very dangerous intersection because vehicles traveling N do not obey the speed limit and are driving well over the speed limit. Stop signs are useless no one obeys them.	Safety analyses will continue throughout design and any recommended safety enhancements as a result of those analyses would be included in the project.
32	10/21/2020	MetroQuest	2: Identify Priorities	Safety	Better visibility in a high turn area	Comment noted.
33	10/21/2020	MetroQuest	2: Identify Priorities	General Comment	Seven miles will not improve the situation. Not worth the money it would cost.	Comment noted.
34	10/21/2020	MetroQuest	2: Identify Priorities	Outside Limits	HWY 63 W please. Excessive speeds and all way stops are not adhered to. Drivers actually try to run you off the road. It's more than just 18 wheeler trucks doing this.	Comment noted.
35	10/22/2020	MetroQuest	2: Identify Priorities	Safety	It is crazy when this happens. We live on this stretch of hwy and it's so unsafe	Comment noted.
36	10/23/2020	MetroQuest	2: Identify Priorities	Safety	Where the 4 lanes meet the two lanes this has always been a problem at this location. There would always be a traffic jams at this location during an evacuation. I know because I was in law enforcement and I had to respond this location many times!	Comment noted.
37	10/23/2020	MetroQuest	2: Identify Priorities	Safety	With the amount of new RV sites going in at Brookeland, there is danger of wrecks especially at the Mill Creek bridge. RVs turning onto 96 is always a big problem. Just the other day, a truck had to hit the Ditch to keep from hitting an RV. The extension needs to be past the bridge for on coming traffic headed south. Also, there are a lot of people driving their kids to and from school including school buses turn there. Thanks for looking at this.	Comment noted.
38	10/23/2020	MetroQuest	2: Identify Priorities	General Comment	No. Why just 7 miles? Will just extend the problem that 7 miles.	Comment noted.
39	10/23/2020	MetroQuest	2: Identify Priorities	Right of Way	Loss of business and homes now existing near the highway	Comment noted.
40	10/24/2020	MetroQuest	2: Identify Priorities	General Comment	Level and grade work.	Comment noted.
41	10/24/2020	MetroQuest	2: Identify Priorities	General Comment	With all of the logging, increase of building in Rayburn country, loss of land for wildlife management is being lost. Moved to the area to enjoy the quiet country life, not bustling highways.	Comment noted.
42	10/26/2020	MetroQuest	2: Identify Priorities	Safety/Traffic	This is a 60 mph zone. If widened speed limit would probably increase. Safety comes to mind	Comment noted.
43	11/3/2020	MetroQuest	2: Identify Priorities	Traffic	Brookeland ISD is off the loop, are they going to some kind Red light or full access road to the school	All design concepts under evaluation are preliminary and subject to change. Crossover locations, turning lanes, median details, and signalization details would continue to be analyzed as project design moves forward.
44	11/3/2020	MetroQuest	2: Identify Priorities	Right of Way	How many businesses will be lost	The amount of businesses or residences that would be affected by the proposed project has not been determined.
45	11/7/2020	MetroQuest	2: Identify Priorities	Traffic	turn lanes for county roads for safety	All design concepts under evaluation are preliminary and subject to change. Crossover locations, turning lanes, median details, and signalization details would continue to be analyzed as project design moves forward.
46	11/10/2020	MetroQuest	2: Identify Priorities	Safety	Wider shoulders for breakdowns or slow drivers. Very dangerous situations	Comment noted.
47	11/10/2020	MetroQuest	2: Identify Priorities	Safety	Shoulders in Brookeland around stores and connecting roads need definite improvements Shoulders aren't large enough with big rigs coming from both ways. Very dangerous.	Comment noted.

48	11/12/2020	MetroQuest	2: Identify Priorities	Safety/Traffic	We need a protected turning lane from northbound Hwy 96 west onto CR227. Between the hills and curves of the existing road, it is difficult to see a vehicle waiting to make this turn; and this highway, even without a hurricane, is heavily travelled by all sizes of vehicles. Brake lights don't seem to slow the oncoming 18-wheelers, trucks and others barreling north. I would like to LIVE so that I may thankfully join the next hurricane evacuation!	Safety analyses will continue throughout design and any recommended safety enhancements as a result of those analyses would be included in the project.
49	11/17/2020	MetroQuest	2: Identify Priorities	Safety	Again the intersection at 96/1007 is and has been a huge issue in our area. A safety plan must be implemented	Safety analyses will continue throughout design and any recommended safety enhancements as a result of those analyses would be included in the project.
50	11/17/2020	MetroQuest	2: Identify Priorities	Safety	My main concern would be the number of accidents and fatalities at 96/1007.	Safety analyses will continue throughout design and any recommended safety enhancements as a result of those analyses would be included in the project.
51	11/17/2020	MetroQuest	2: Identify Priorities	Right of Way	As a business owner located at 15590 US Highway 96 North- naturally i would like my business to be protected or be reimbursed fair value for replacement.	If TxDOT determines that a certain parcel of property is necessary for construction of the proposed project, the property owner would be contacted. For more information about the right of way acquisition process and your rights as a property owner, please visit: <a href="https://www.txdot.gov/inside-txdot/division/right-of-way.html">https://www.txdot.gov/inside-txdot/division/right-of-way.html</a>
52	11/23/2020	MetroQuest	2: Identify Priorities	Safety	Disrupt residences the least. Make their road safer.	Comment noted.
53	11/25/2020	MetroQuest	2: Identify Priorities	Safety	Hwy. 96 is rutted in some areas that hydroplaning becomes an issue during wet weather.	Comment noted.
54	12/5/2020	MetroQuest	2: Identify Priorities	Congestion	Too much traffic now	Comment noted.
55	12/9/2020	MetroQuest	2: Identify Priorities	Safety	Safety is always important in an evacuation.	Comment noted.
56	12/9/2020	MetroQuest	2: Identify Priorities	Maintenance	96 carries lots of traffic and needs to be maintained all the time.	TxDOT would continue to maintain areas not directly affected during construction.
57	12/9/2020	MetroQuest	2: Identify Priorities	Economy	96 is important to Sabine County.	TxDOT aims to develop and operate an integrated transportation system that provides reliable and accessible mobility and enables economic growth.
58	10/19/2020	MetroQuest	3: Rate Alternatives	General Comment	only widening one side does not complete the issue. we have heavy traffic headed north during evac. and headed south returning home after evac.	Comment noted.
59	10/19/2020	MetroQuest	3: Rate Alternatives	Environment	Uses less acreage. Less impact to the environment.	In accordance with the National Environmental Policy Act (NEPA), during development of the project design, TxDOT makes every effort to avoid and minimize potential impacts to environmental resources. Where impacts are unavoidable, TxDOT proposes appropriate mitigation for the expected impacts.
60	10/20/2020	MetroQuest	3: Rate Alternatives	General Comment	This would be a nice improvement for this section of highway. The traffic has increased in this road	Comment noted.
61	10/20/2020	MetroQuest	3: Rate Alternatives	Right of Way	The houses on this stretch of highway are on this side	Comment noted.
62	10/20/2020	MetroQuest	3: Rate Alternatives	Right of Way	this one looks like it would have the least impact on residence.	Comment noted.
63	10/20/2020	MetroQuest	3: Rate Alternatives	Safety	This would also be a great improvement for this section of highway. There is more open area in the west side of this highway. The entrance to the south end of loop 149 could be improved to a much safer transition for campers and boats from 96. I have been traveling this highway for 31 years for work. When I started this journey, there was very little traffic. The recreational vehicles and commercial traffic has increased to nearly unsafe levels I would love to see this before I retire!	Comment noted.
64	10/20/2020	MetroQuest	3: Rate Alternatives	General Comment	the most disruptive	Comment noted.
65	10/20/2020	MetroQuest	3: Rate Alternatives	General Comment	This would be aa great improvement as well	Comment noted.
66	10/20/2020	MetroQuest	3: Rate Alternatives	General Comment	The hwy. Projects always cost much more and take much longer than projected. So I did not consider cost as an issue.	Comment noted.
67	10/20/2020	MetroQuest	3: Rate Alternatives	Right of Way	the least amount impact to residents and business.	Comment noted.
68	10/20/2020	MetroQuest	3: Rate Alternatives	Traffic	Would it not be better to take median and put in a continous turn lane?	All design concepts under evaluation are preliminary and subject to change. Crossover locations, turning lanes, median details, and signalization details would continue to be analyzed as project design moves forward.
69	10/21/2020	MetroQuest	3: Rate Alternatives	Economy	You would taking one of the only stores in the community out then	TxDOT aims to develop and operate an integrated transportation system that provides reliable and accessible mobility and enables economic growth.
70	10/21/2020	MetroQuest	3: Rate Alternatives	General Comment	I don't it would be very beneficial	Comment noted.
71	10/21/2020	MetroQuest	3: Rate Alternatives	Right of Way	Takes the same amount from both sides	Comment noted.
72	10/24/2020	MetroQuest	3: Rate Alternatives	General Comment	Don't want to widen but don't believe you will listen to the people.	Comment noted.
73	10/24/2020	MetroQuest	3: Rate Alternatives	Right of Way	The least desired. I do not want to lose my fence, trees, or property. So the rating is one.	Comment noted.
74	10/24/2020	MetroQuest	3: Rate Alternatives	General Comment	Most preferred is west side. I rate it a five.	Comment noted.

75	10/24/2020	MetroQuest	3: Rate Alternatives	Right of Way/Economy	Minimal economic burden on commercial concerns and minimal residential impact residential	Comment noted.
76	10/24/2020	MetroQuest	3: Rate Alternatives	General Comment	Rate at three. Do not wish to take out the new power lines on East side.	Comment noted.
77	10/24/2020	MetroQuest	3: Rate Alternatives	General Comment	Leave hwy alone. Evacuation route had no congestion on the last two hurricanes.	Comment noted.
78	11/6/2020	MetroQuest	3: Rate Alternatives	General Comment	Leave highway alone as is	Comment noted.
79	11/7/2020	MetroQuest	3: Rate Alternatives	Right of Way	This would displace my family and this property was an an heritage. The only thing left of my kids grandparents.	Comment noted.
80	11/16/2020	MetroQuest	3: Rate Alternatives	Economy	It will be better for established businesses	TxDOT aims to develop and operate an integrated transportation system that provides reliable and accessible mobility and enables economic growth.
81	10/16/2020	MetroQuest	4: Interactive Map	Safety	Flashing light	Comment noted.
82	10/19/2020	MetroQuest	4: Interactive Map	General Comment	Sam Rayburn Lake	Comment noted.
83	10/19/2020	MetroQuest	4: Interactive Map	Environment	Trees would be destroyed and we would lose part of our forest	In accordance with the National Environmental Policy Act (NEPA), during development of the project design, TxDOT makes every effort to avoid and minimize potential impacts to environmental resources. Where impacts are unavoidable, TxDOT proposes appropriate mitigation for the expected impacts.
84	10/19/2020	MetroQuest	4: Interactive Map	Congestion	As Jasper is to the south this project needs to be able to sustain massive amounts of traffic for those evacuating from Hardin, Jefferson, Orange and counties further south to the coast.	The purpose of the project is to provide a more reliable transportation and hurricane evacuation route, to enhance connectivity and mobility, and to enhance safety. US 96 within the Beaumont District is a critical part of the strategic freight network and provides hurricane evacuation capacity for Southeast Texas and neighboring areas.
85	10/19/2020	MetroQuest	4: Interactive Map	Safety/Congestion	Bottle necks during evacuations but that will still happen at Brookeland.	Comment noted.
86	10/19/2020	MetroQuest	4: Interactive Map	Safety/Congestion	Bottleneck	Comment noted.
87	10/19/2020	MetroQuest	4: Interactive Map	General Comment	Break down at this point when there is a Hurricane evcation.	Comment noted.
88	10/19/2020	MetroQuest	4: Interactive Map	Congestion	Congestion for those traveling east on 255	Comment noted.
89	10/19/2020	MetroQuest	4: Interactive Map	Safety/Congestion	creates bottleneck and prevents smooth flow of emergency evac and responders	Comment noted.
90	10/19/2020	MetroQuest	4: Interactive Map	Safety/Congestion	During Hurricane evacuation there will be a fair share of cross traffic at this major intersection. Causing delays similar to the delays at 255 and 63 during Hurricane Laura. On Tuesday 2 days before landfall of Hurricane Laura there was a 2 mile back-up Northbound on 63. Better planning is needed.	Comment noted.
91	10/19/2020	MetroQuest	4: Interactive Map	Safety/Congestion	During major hurricane evacuations, or during major flood events whereby southern routes such as Interstate 10 are flooded, major traffic flow becomes bottlenecked at RR 255 when the 4-lane divided becomes two lanes, which greatly increases evacuation times and endangers citizens as well as local emergency responders.	The proposed project would widen the roadway from two to four lanes with a grassy median. This would enhance safety and capacity for everyday operations as well as emergency evacuations.
92	10/19/2020	MetroQuest	4: Interactive Map	General Comment	Hurricanes are not going away. This is a forever problem connected to population growth.	Comment noted.
93	10/19/2020	MetroQuest	4: Interactive Map	General Comment	I believe the evacuation route is very important.	Comment noted.
94	10/19/2020	MetroQuest	4: Interactive Map	Safety/Congestion	It's a traffic jam when in an evacuation is in place	Comment noted.
95	10/19/2020	MetroQuest	4: Interactive Map	Congestion	lots of traffic leaves Beaumont and it backs up when it drops down to 2 lanes	Comment noted.
96	10/19/2020	MetroQuest	4: Interactive Map	Congestion	may want to extend this a little more north so that traffic does not back up to Brookeland and block traffic going to the stores	Comment noted.
97	10/19/2020	MetroQuest	4: Interactive Map	General Comment	Needed to get more vehicles moving safely	Comment noted.
98	10/19/2020	MetroQuest	4: Interactive Map	Safety	Needs to be explained for better flow durning hurricane.	Comment noted.
99	10/19/2020	MetroQuest	4: Interactive Map	Safety/Congestion	not enough lines for evacuation route	Comment noted.
100	10/19/2020	MetroQuest	4: Interactive Map	General Comment	One lane north	Comment noted.
101	10/19/2020	MetroQuest	4: Interactive Map	Safety/Congestion	Reduce congestion during evacuations	Comment noted.
102	10/19/2020	MetroQuest	4: Interactive Map	Safety/Congestion	Road needs to be widened for evacuation.	Comment noted.
103	10/19/2020	MetroQuest	4: Interactive Map	General Comment	Self explanatory	Comment noted.
104	10/19/2020	MetroQuest	4: Interactive Map	Safety/Congestion	Slowage in evacuation	Comment noted.
105	10/19/2020	MetroQuest	4: Interactive Map	Safety/Congestion	The 2 lanes backs up in hurricane evac	Comment noted.
106	10/19/2020	MetroQuest	4: Interactive Map	Safety/Congestion	The amount of traffic from evacuees in the coastal counties would be an issue and if there isn't a safe passing lane available. Then traffic would be a problem.	Comment noted.
107	10/19/2020	MetroQuest	4: Interactive Map	General Comment	The flow of the traffic	Comment noted.
108	10/19/2020	MetroQuest	4: Interactive Map	Congestion/Traffic	The two lanes get bogged down in high traffic. Plus, there are curves, and lack of street lights that make it difficult to drive the speed limit in some locations.	Comment noted.

109	10/19/2020	MetroQuest	4: Interactive Map	Congestion	There's only two lanes and tons of traffic that follow this highway!	The purpose of the project is to provide a more reliable transportation and hurricane evacuation route, to enhance connectivity and mobility, and to enhance safety. US 96 within the Beaumont District is a critical part of the strategic freight network and provides hurricane evacuation capacity for Southeast Texas and neighboring areas.
110	10/19/2020	MetroQuest	4: Interactive Map	Safety/Congestion	This area is a horrible place to turn and gets backed up with traffic turning, during evacuation it's worse than normal.	Comment noted.
111	10/19/2020	MetroQuest	4: Interactive Map	General Comment	this project will keep the evac traffic flowing more smoothly.	Comment noted.
112	10/19/2020	MetroQuest	4: Interactive Map	General Comment	Too small to handle the traffic	Comment noted.
113	10/19/2020	MetroQuest	4: Interactive Map	General Comment	Traffic flows better with more lanes	Comment noted.
114	10/19/2020	MetroQuest	4: Interactive Map	Safety/Congestion	Traffic gets congested here especially during a hurricane evacuation.	Comment noted.
115	10/19/2020	MetroQuest	4: Interactive Map	Safety/Congestion	Would be nice when evacuating for future hurricanes that it be more of a easy flow.	Comment noted.
116	10/19/2020	MetroQuest	4: Interactive Map	Traffic	a long left turn lane in the northbound lane at this intersection is needed for boat trailer traffic turning left	All design concepts under evaluation are preliminary and subject to change. Crossover locations, turning lanes, median details, and signalization details would continue to be analyzed as project design moves forward.
117	10/19/2020	MetroQuest	4: Interactive Map	Outside Limits	Do not stop here----continue to Pineland, Texas	Comment noted.
118	10/19/2020	MetroQuest	4: Interactive Map	General Comment	Heavy traffic of log trucks and employees going to and from Georgia Pacific.	Comment noted.
119	10/19/2020	MetroQuest	4: Interactive Map	General Comment	It would be a lot nicer if the road was Widened so people could pass around more sufficiently and not have to wait behind log trucks trucks	The purpose of the project is to provide a more reliable transportation and hurricane evacuation route, to enhance connectivity and mobility, and to enhance safety. US 96 within the Beaumont District is a critical part of the strategic freight network and provides hurricane evacuation capacity for Southeast Texas and neighboring areas.
120	10/19/2020	MetroQuest	4: Interactive Map	Right of Way	Many homes would be destroyed by expansion of highway	If TxDOT determines that a certain parcel of property is necessary for construction of the proposed project, the property owner would be contacted. For more information about the right of way acquisition process and your rights as a property owner, please visit: <a href="https://www.txdot.gov/inside-txdot/division/right-of-way.html">https://www.txdot.gov/inside-txdot/division/right-of-way.html</a>
121	10/19/2020	MetroQuest	4: Interactive Map	Right of Way	Many homes would be destroyed by expansion of highway	If TxDOT determines that a certain parcel of property is necessary for construction of the proposed project, the property owner would be contacted. For more information about the right of way acquisition process and your rights as a property owner, please visit: <a href="https://www.txdot.gov/inside-txdot/division/right-of-way.html">https://www.txdot.gov/inside-txdot/division/right-of-way.html</a>
122	10/19/2020	MetroQuest	4: Interactive Map	Right of Way	Many homes would be destroyed with this highway expansion	If TxDOT determines that a certain parcel of property is necessary for construction of the proposed project, the property owner would be contacted. For more information about the right of way acquisition process and your rights as a property owner, please visit: <a href="https://www.txdot.gov/inside-txdot/division/right-of-way.html">https://www.txdot.gov/inside-txdot/division/right-of-way.html</a>
123	10/19/2020	MetroQuest	4: Interactive Map	Right of Way	Many homes would be destroyed with this highway expansion	If TxDOT determines that a certain parcel of property is necessary for construction of the proposed project, the property owner would be contacted. For more information about the right of way acquisition process and your rights as a property owner, please visit: <a href="https://www.txdot.gov/inside-txdot/division/right-of-way.html">https://www.txdot.gov/inside-txdot/division/right-of-way.html</a>
124	10/19/2020	MetroQuest	4: Interactive Map	Safety/Congestion	This 2-lane section should be expanded 4-lane divided to allow for safer transit of military equipment and personnel, commercial freight and evacuation of citizens from Jefferson, Hardin, Orange, Newton and Jasper Counties.	The proposed project would widen the roadway from two to four lanes with a grassy median. This would enhance safety and capacity for everyday operations as well as emergency evacuations.
125	10/19/2020	MetroQuest	4: Interactive Map	Safety	1007 and 96 intersection is dangerous	Comment noted.
126	10/19/2020	MetroQuest	4: Interactive Map	General Comment	149 goes to our school please remember that.	Comment noted.
127	10/19/2020	MetroQuest	4: Interactive Map	Safety	4 lanes would make the highway safer.	Comment noted.
128	10/19/2020	MetroQuest	4: Interactive Map	Safety	bad intersection, can't see traffic when entering Hwy 96 from FM 1007	Comment noted.
129	10/19/2020	MetroQuest	4: Interactive Map	Safety	Becomes a safety issue during Hurricane evacuations	Comment noted.
130	10/19/2020	MetroQuest	4: Interactive Map	Safety	Blind intersection if trying to get on HWY 96.	Comment noted.
131	10/19/2020	MetroQuest	4: Interactive Map	Maintenance	Bridge needs work	Comment noted.
132	10/19/2020	MetroQuest	4: Interactive Map	Safety	Can't see when trying get on 96	Comment noted.
133	10/19/2020	MetroQuest	4: Interactive Map	Congestion	Choke point for south bound with slow moving log trucks on hills	Comment noted.
134	10/19/2020	MetroQuest	4: Interactive Map	General Comment	city of Jasper	Comment noted.

135	10/19/2020	MetroQuest	4: Interactive Map	General Comment	Commercial traffic is easier to deal with when you have 4 lanes.	Comment noted.
136	10/19/2020	MetroQuest	4: Interactive Map	Safety	Extremely bad intersection. Many bad wrecks over the years.	Comment noted.
137	10/19/2020	MetroQuest	4: Interactive Map	Safety	Hard to turn into school zone. Very dangerous entering and leaving. The road leading to the school is in extremely poor condition	Comment noted.
138	10/19/2020	MetroQuest	4: Interactive Map	Safety/Maintenance	Have trouble passing existing traffic if slower. Sine the road is hilly and curved. It is dangerous. Also the ruts that collect water.	Comment noted.
139	10/19/2020	MetroQuest	4: Interactive Map	Safety	Having lived facing 96 since 1981, we know safety has always been an issue and it grows bigger yearly. The commercial traffic involving 18 wheelers and log trucks continues to grow. Greater control of traffic entering from the east and west needs to be a priority. The trucks can't stop fast enough to avoid a careless or distracted driver who pulls into their lane of traffic. Controlled access needs to on the talk table, IMO.	Safety analyses will continue throughout design and any recommended safety enhancements as a result of those analyses would be included in the project.
140	10/19/2020	MetroQuest	4: Interactive Map	Congestion	Heavy traffic due to log trucks going to and from Georgia Pacific.	Comment noted.
141	10/19/2020	MetroQuest	4: Interactive Map	Safety/Congestion	High hills, lots of curves, high speed limits, lack of lights make it a dangerous situation. We avoid driving that way when evacuating	Comment noted.
142	10/19/2020	MetroQuest	4: Interactive Map	Safety/Traffic	Hwy 96 at FM 1007 needs to be a traffic light controlled intersection. There have been numerous injury accidents and a few fatality accidents at this intersection.	Safety analyses will continue throughout design and any recommended safety enhancements as a result of those analyses would be included in the project.
143	10/19/2020	MetroQuest	4: Interactive Map	Safety	I almost get hit by truckers at night all the time. If it wasn't for the car wash there I would be dead	Comment noted.
144	10/19/2020	MetroQuest	4: Interactive Map	Safety	I can see this area being an issue if the highway was widened/extra lane. It is already a very hazardous area with it being on top of the hill. I would like to hear ideas that would prevent less wrecks here.	Comment noted.
145	10/19/2020	MetroQuest	4: Interactive Map	Safety	I have seen so many fatalities at this intersection since my childhood growing up in the area. If there was a wider roadway I think people would be able to avoid as many accidents.	Comment noted.
146	10/19/2020	MetroQuest	4: Interactive Map	Safety	Intersection at FM1007 needs better warning signage.	Comment noted.
147	10/19/2020	MetroQuest	4: Interactive Map	Safety	Intersection, may need overpass here.	Comment noted.
148	10/19/2020	MetroQuest	4: Interactive Map	General Comment	It is a narrow and hilly area and traffic get slowed down and crazy.	Comment noted.
149	10/19/2020	MetroQuest	4: Interactive Map	General Comment	Lots of big trucks travel this highway.	Comment noted.
150	10/19/2020	MetroQuest	4: Interactive Map	Safety	Lots of car wrecks	Comment noted.
151	10/19/2020	MetroQuest	4: Interactive Map	Safety	Many accidents happen at this intersection.	Comment noted.
152	10/19/2020	MetroQuest	4: Interactive Map	Safety	Many fatal wrecks	Comment noted.
153	10/19/2020	MetroQuest	4: Interactive Map	Safety/Traffic	May need to add some form of caution light or actual flashing red lights for east and west bound to allow flow of traffic north and south to go unstopped.	Comment noted.
154	10/19/2020	MetroQuest	4: Interactive Map	Safety/Traffic	May need to add some form of caution light or actual flashing red lights for east and west bound to allow flow of traffic north and south to go unstopped.	Comment noted.
155	10/19/2020	MetroQuest	4: Interactive Map	General Comment	More visible speed markers given this is a slow down area as-is.	Comment noted.
156	10/19/2020	MetroQuest	4: Interactive Map	Safety/Traffic	need a four way stop or real traffic light here..... very difficult to enter 96 from hwy 1007 Rayburn side	Comment noted.
157	10/19/2020	MetroQuest	4: Interactive Map	Safety/Traffic	Need traffic light people get killed here by truckers	Comment noted.
158	10/19/2020	MetroQuest	4: Interactive Map	Safety/Traffic	Need tragic light	Comment noted.
159	10/19/2020	MetroQuest	4: Interactive Map	Safety	Need turning lane and do away with drop off shoulders, i live here and its difficult to get off the highway, its in a blind spot on both ends.	Comment noted.
160	10/19/2020	MetroQuest	4: Interactive Map	Safety	needs attention--- lots of wrecks happen here	Comment noted.
161	10/19/2020	MetroQuest	4: Interactive Map	Traffic	No traffic light	All design concepts under evaluation are preliminary and subject to change. Crossover locations, turning lanes, median details, and signalization details would continue to be analyzed as project design moves forward.
162	10/19/2020	MetroQuest	4: Interactive Map	Traffic	Not safe to turn on CR without turn lanes	All design concepts under evaluation are preliminary and subject to change. Crossover locations, turning lanes, median details, and signalization details would continue to be analyzed as project design moves forward.
163	10/19/2020	MetroQuest	4: Interactive Map	Safety/Congestion	One lane in each direction forces people to have to use the oncoming lane to pass slow inconsiderate drivers, creating massive safety issues.	Comment noted.
164	10/19/2020	MetroQuest	4: Interactive Map	General Comment	Recreatuonal traiifc	Comment noted.
165	10/19/2020	MetroQuest	4: Interactive Map	Safety/Congestion	Right now this are doesn't allow passing and lots of log trucks. At the intersection of 1007 and 96 there are hills in this area and people speed though there unable to see traffic at intersection and Vice Versa and people try to pass in no passing zones	Comment noted.
166	10/19/2020	MetroQuest	4: Interactive Map	Safety	Safety	Comment noted.
167	10/19/2020	MetroQuest	4: Interactive Map	Safety	safety	Comment noted.

168	10/19/2020	MetroQuest	4: Interactive Map	Safety/Traffic	Safety issue on the blind hill. Would the turn lanes remain?	Safety analyses will continue throughout design and any recommended safety enhancements as a result of those analyses would be included in the project.
169	10/19/2020	MetroQuest	4: Interactive Map	Safety	Same as FM1007 intersection- have improved signage for oncoming motorists.	Comment noted.
170	10/19/2020	MetroQuest	4: Interactive Map	Safety	So many wrecks and hard to cross. Speeding 18 wheelers.	Comment noted.
171	10/19/2020	MetroQuest	4: Interactive Map	Safety/Congestion	The 2-lane section of U.S. 96 is extremely dangerous for vehicles due to traffic attempting to pass, bottlenecks during evacuations, and vehicles entering and going across the roadways.	Comment noted.
172	10/19/2020	MetroQuest	4: Interactive Map	Safety	The turn off for two additions is on top of a hill, its very dangerous and especially for our bus.	Comment noted.
173	10/19/2020	MetroQuest	4: Interactive Map	Safety	There have been many wrecks at the intersection of FM 1007 and 96	Comment noted.
174	10/19/2020	MetroQuest	4: Interactive Map	Safety	This area has always been bad, so many wrecks people die at this spot.	Comment noted.
175	10/19/2020	MetroQuest	4: Interactive Map	Safety	This intersection and cross streets are another bad area for accidents. People coming out of Lakeland can't see to the north coming out of the neighborhood. A wider intersection or crossing lights would improve this area tremendously.	Safety analyses will continue throughout design and any recommended safety enhancements as a result of those analyses would be included in the project.
176	10/19/2020	MetroQuest	4: Interactive Map	Safety/Traffic	This intersection is very dangerous due to the valley in the highway. Difficult to see each way for oncoming traffic. Needs a red light or the problem with visibility needs to be addressed.	Comment noted.
177	10/19/2020	MetroQuest	4: Interactive Map	Safety	This is also a very hazardous intersection. Adding lanes to this area could make it a more dangerous area. i think there are ways to make it safer though.	Safety analyses will continue throughout design and any recommended safety enhancements as a result of those analyses would be included in the project.
178	10/19/2020	MetroQuest	4: Interactive Map	Safety	Too many accidents	Comment noted.
179	10/19/2020	MetroQuest	4: Interactive Map	Safety	Too many accidents at this intersection.	Comment noted.
180	10/19/2020	MetroQuest	4: Interactive Map	General Comment	Too much boat trailer traffic	Comment noted.
181	10/19/2020	MetroQuest	4: Interactive Map	Safety/Congestion	Traffic gets congested here especially in a hurricane evacuation.	Comment noted.
182	10/19/2020	MetroQuest	4: Interactive Map	General Comment	Traffic to and from Sam Rayburn	Comment noted.
183	10/19/2020	MetroQuest	4: Interactive Map	General Comment	Traffic/Business	Comment noted.
184	10/19/2020	MetroQuest	4: Interactive Map	Safety	Turning left onto 149 is dangerous because lane visibility north of you is impaired by the curve. On coming traffic cannot be seen until they are on you	Comment noted.
185	10/19/2020	MetroQuest	4: Interactive Map	Safety	Very bad car wrecks there	Comment noted.
186	10/19/2020	MetroQuest	4: Interactive Map	Safety	Very Dangerous Intersection!	Comment noted.
187	10/19/2020	MetroQuest	4: Interactive Map	Safety	We're County Road 219 which is known as Lakeland edition crosses 96 to browndell There has been numerous wrecks there since as long as I have been born & Very dangerous to see over the hill With very fast oncoming traffic coming from the car wash way	Comment noted.
188	10/19/2020	MetroQuest	4: Interactive Map	Safety	Widening both lanes seems to improve safety the most with very little extra cost.	Comment noted.
189	10/19/2020	MetroQuest	4: Interactive Map	Safety/Traffic	would not like traffic signals at this intersection. A bridge with entry ramps too expensive. Layout similar to the 255 intersection may work.	Comment noted.
190	10/19/2020	MetroQuest	4: Interactive Map	Safety	A lot of the time you get stuck behind a slower moving truck and you put yourself and others at risk if you try to pass. Also, the roads have ruts from the traffic over time and Ft causes water to collect in those areas. That issue causes severe hydroplaning.	Comment noted.
191	10/19/2020	MetroQuest	4: Interactive Map	Traffic	extreme traffic issues	Comment noted.
192	10/19/2020	MetroQuest	4: Interactive Map	Safety	FM-1007 onto 96 is dangerous and merging traffic is hazardous	Comment noted.
193	10/19/2020	MetroQuest	4: Interactive Map	Safety/Congestion	Heavy traffic flow along the 2-lane section of US 96 causes major bottlenecks, slows normal traffic and endangers emergency first responders. It also endangers drivers and passengers attempting to enter onto U.S. 96 traveling north or south.	Comment noted.
194	10/19/2020	MetroQuest	4: Interactive Map	Congestion	Heavy traffic in this area due to log trucks going to Georgia Pacific as well as local/tourist traffic.	Comment noted.
195	10/19/2020	MetroQuest	4: Interactive Map	General Comment	Horrible intersection.	Comment noted.
196	10/19/2020	MetroQuest	4: Interactive Map	Safety/Traffic	I don't know if I put this in the correct location or not. But the location that I am speaking about is the caution lights there needs to be a four way stop there. Also numerous wrecks have occurred here and deaths	Comment noted.
197	10/19/2020	MetroQuest	4: Interactive Map	Traffic	Intersection of 1007 and 96. Needs an overpass, 4-way stop or traffic light.	All design concepts under evaluation are preliminary and subject to change. Crossover locations, turning lanes, median details, and signalization details would continue to be analyzed as project design moves forward.
198	10/19/2020	MetroQuest	4: Interactive Map	Congestion	Lots of traffic travel this highway	Comment noted.
199	10/19/2020	MetroQuest	4: Interactive Map	Safety	Many bad wrecks	Comment noted.
200	10/19/2020	MetroQuest	4: Interactive Map	General Comment	Needs 4 lanes	Comment noted.
201	10/19/2020	MetroQuest	4: Interactive Map	General Comment	needs 4 lanes	Comment noted.

202	10/19/2020	MetroQuest	4: Interactive Map	Traffic	Needs a stop light at this intersection.	All design concepts under evaluation are preliminary and subject to change. Crossover locations, turning lanes, median details, and signalization details would continue to be analyzed as project design moves forward.
203	10/19/2020	MetroQuest	4: Interactive Map	Safety/Congestion	Not widening creates traffic issues during evacuation.	Comment noted.
204	10/19/2020	MetroQuest	4: Interactive Map	Safety/Congestion	Not widening past this point can create safety issues during evacuation.	Comment noted.
205	10/19/2020	MetroQuest	4: Interactive Map	General Comment	One lane in each direction is not enough	Comment noted.
206	10/19/2020	MetroQuest	4: Interactive Map	General Comment	One lane north	Comment noted.
207	10/19/2020	MetroQuest	4: Interactive Map	Safety/Traffic	People die here every year. They need a traffic light	Comment noted.
208	10/19/2020	MetroQuest	4: Interactive Map	General Comment	Recreationla traffic	Comment noted.
209	10/19/2020	MetroQuest	4: Interactive Map	General Comment	Roadway gets bottle necked	Comment noted.
210	10/19/2020	MetroQuest	4: Interactive Map	Safety	Sam answer as the safety issue.	Comment noted.
211	10/19/2020	MetroQuest	4: Interactive Map	General Comment	school traffic and rv and boat traffic	Comment noted.
212	10/19/2020	MetroQuest	4: Interactive Map	Congestion	Slow due to only 1 lane in both directions	The purpose of the project is to provide a more reliable transportation and hurricane evacuation route, to enhance connectivity and mobility, and to enhance safety. US 96 within the Beaumont District is a critical part of the strategic freight network and provides hurricane evacuation capacity for Southeast Texas and neighboring areas.
213	10/19/2020	MetroQuest	4: Interactive Map	Safety	Sometimes people forget to merge and it creates a traffic issue	Comment noted.
214	10/19/2020	MetroQuest	4: Interactive Map	General Comment	subdivision traffic from both sides of the road.	Comment noted.
215	10/19/2020	MetroQuest	4: Interactive Map	Safety	The area is full of log trucks and 18 wheelers. With big hills, they can't see someone stopped ahead or getting ready to turn off the hwy into a residence or store. There is no where to pull off to avoid hitting or being hit	Comment noted.
216	10/19/2020	MetroQuest	4: Interactive Map	Safety	The school traffic almost gets hit everyday.	Comment noted.
217	10/19/2020	MetroQuest	4: Interactive Map	Safety	There are minimal passing zones and only one lane both ways.	Comment noted.
218	10/19/2020	MetroQuest	4: Interactive Map	General Comment	There is a lot of traffic on FM255	Comment noted.
219	10/19/2020	MetroQuest	4: Interactive Map	Safety	this bottle neck has been the site of numerous fatal crashes.	Comment noted.
220	10/19/2020	MetroQuest	4: Interactive Map	Safety	This intersection is very dangerous due to the valley in the highway. Difficult to see each way for oncoming traffic. Needs a red light or the problem with visibility needs to be addressed.	Safety analyses will continue throughout design and any recommended safety enhancements as a result of those analyses would be included in the project.
221	10/19/2020	MetroQuest	4: Interactive Map	Safety	This is a dangerous intersection. Most interested in how this intersection will be improved, to make it safer. With a widened Hwy 96 it will make drivers on hwy 1007 cross more lanes of traffic.	Safety analyses will continue throughout design and any recommended safety enhancements as a result of those analyses would be included in the project.
222	10/19/2020	MetroQuest	4: Interactive Map	Congestion	Too much traffic for a small road	The purpose of the project is to provide a more reliable transportation and hurricane evacuation route, to enhance connectivity and mobility, and to enhance safety. US 96 within the Beaumont District is a critical part of the strategic freight network and provides hurricane evacuation capacity for Southeast Texas and neighboring areas.
223	10/19/2020	MetroQuest	4: Interactive Map	Congestion	traffic congested when going down to one lane	The purpose of the project is to provide a more reliable transportation and hurricane evacuation route, to enhance connectivity and mobility, and to enhance safety. US 96 within the Beaumont District is a critical part of the strategic freight network and provides hurricane evacuation capacity for Southeast Texas and neighboring areas.
224	10/19/2020	MetroQuest	4: Interactive Map	Safety/Congestion	Traffic gets congested here especially during a hurricane evacuation.	Comment noted.
225	10/19/2020	MetroQuest	4: Interactive Map	Congestion	Traffic will get heavier as the economy grows. All issues will be magnified.	The purpose of the project is to provide a more reliable transportation and hurricane evacuation route, to enhance connectivity and mobility, and to enhance safety. US 96 within the Beaumont District is a critical part of the strategic freight network and provides hurricane evacuation capacity for Southeast Texas and neighboring areas.
226	10/19/2020	MetroQuest	4: Interactive Map	General Comment	Traffic/Business	Comment noted.
227	10/19/2020	MetroQuest	4: Interactive Map	Safety	Vision here is extremely limited in both directions. North and south	Comment noted.
228	10/19/2020	MetroQuest	4: Interactive Map	Safety	Vision here is extremely limited to the north	Comment noted.
229	10/19/2020	MetroQuest	4: Interactive Map	Safety/Traffic	When road narrows from 4 lane to 2 lane people are driving to fast and no turn lane for the county roads	Comment noted.
230	10/19/2020	MetroQuest	4: Interactive Map	General Comment	With the growing number of people moving into the area and the increased traffic, i believe this project is needed.	Comment noted.

231	10/19/2020	MetroQuest	4: Interactive Map	Safety	Wrecks	Comment noted.
232	10/20/2020	MetroQuest	4: Interactive Map	Environment	Car wash dumps chemicals and foreign soil into mill creek. The water upstream of the car wash is clear and blue. Below is muddy and nasty.	Any concerns regarding environmental impacts of private citizens or businesses should be reported to appropriate authorities. TxDOT does not have regulatory authority in this situation.
233	10/20/2020	MetroQuest	4: Interactive Map	Drainage	flood zone area	Comment noted.
234	10/20/2020	MetroQuest	4: Interactive Map	Drainage	flood zone area	Comment noted.
235	10/20/2020	MetroQuest	4: Interactive Map	Environment	I'd like to protect as much forested area as possible while improving hurricane evacuation routes.	In accordance with the National Environmental Policy Act (NEPA), during development of the project design, TxDOT makes every effort to avoid and minimize potential impacts to environmental resources. Where impacts are unavoidable, TxDOT proposes appropriate mitigation for the expected impacts.
236	10/20/2020	MetroQuest	4: Interactive Map	Environment	Wet land area	Comment noted.
237	10/20/2020	MetroQuest	4: Interactive Map	Safety/Congestion	Allows traffic to flow better during evaluations. Really need to go father north with the expansion.	Comment noted.
238	10/20/2020	MetroQuest	4: Interactive Map	Safety/Congestion	Any narrowing of roadway can cause a chokepoint during evacuations. Possibly widen the bridge first before widening the 96 roadway, or consider making the project wider and widening bridge during this project.	Comment noted.
239	10/20/2020	MetroQuest	4: Interactive Map	General Comment	Bottlenecks	Comment noted.
240	10/20/2020	MetroQuest	4: Interactive Map	General Comment	bottlenecks when evacuations occur.	Comment noted.
241	10/20/2020	MetroQuest	4: Interactive Map	General Comment	Busy intersection	Comment noted.
242	10/20/2020	MetroQuest	4: Interactive Map	Safety/Congestion	Citizens trying to evacuate need as many northbound lanes as possible.	Comment noted.
243	10/20/2020	MetroQuest	4: Interactive Map	Safety/Congestion	Congestion during a hurricane	Comment noted.
244	10/20/2020	MetroQuest	4: Interactive Map	Safety/Congestion	during evacuations this is a bad bottle neck that backs traffic back into Jasper	Comment noted.
245	10/20/2020	MetroQuest	4: Interactive Map	Safety/Congestion	Enables quicker evacuation providing more safety	Comment noted.
246	10/20/2020	MetroQuest	4: Interactive Map	Safety/Congestion	Extreme traffic congestion can occur from Hurricane evacuation	Comment noted.
247	10/20/2020	MetroQuest	4: Interactive Map	General Comment	Glad to see it widened	Comment noted.
248	10/20/2020	MetroQuest	4: Interactive Map	Congestion	Help ease congestion	The purpose of the project is to provide a more reliable transportation and hurricane evacuation route, to enhance connectivity and mobility, and to enhance safety. US 96 within the Beaumont District is a critical part of the strategic freight network and provides hurricane evacuation capacity for Southeast Texas and neighboring areas.
249	10/20/2020	MetroQuest	4: Interactive Map	Safety	Hurricane	Comment noted.
250	10/20/2020	MetroQuest	4: Interactive Map	Safety/Congestion	It gets backed up with hurricane evacuations	Comment noted.
251	10/20/2020	MetroQuest	4: Interactive Map	Safety/Congestion	It was better with Hurricane Laura, but if we had to go North in any other hurricane before Laura we would have to wait a very long time to get out in traffic.	Comment noted.
252	10/20/2020	MetroQuest	4: Interactive Map	General Comment	needs to be 4 lanes	Comment noted.
253	10/20/2020	MetroQuest	4: Interactive Map	Outside Limits	the evacuation routes needs to be extended through Sabine and San Augustine counties	This comment is for an area outside of the proposed project limits. Further information on other projects in the TxDOT Beaumont District, please visit: <a href="https://www.txdot.gov/inside-txdot/projects/project-tracker.html">https://www.txdot.gov/inside-txdot/projects/project-tracker.html</a>
254	10/20/2020	MetroQuest	4: Interactive Map	Safety/Congestion	The recent hurricane evacuations created significant traffic issues near Pineland. Despite there being no traffic lights in the area, roadway traffic was at a standstill at the intersection of 96 and S Temple Ave	Comment noted.
255	10/20/2020	MetroQuest	4: Interactive Map	General Comment	This is a concern	Comment noted.
256	10/20/2020	MetroQuest	4: Interactive Map	General Comment	Traffic flow	Comment noted.
257	10/20/2020	MetroQuest	4: Interactive Map	Safety/Congestion	Very congested at hurricane times, dangerous on hills with passing lanes.	Comment noted.
258	10/20/2020	MetroQuest	4: Interactive Map	Safety/Congestion	When the lanes neck down from two lanes to one during an evacuation route the traffic always slows.	Comment noted.
259	10/20/2020	MetroQuest	4: Interactive Map	Outside Limits	Widen to pineland, where people have an opportunity to go east or west.	Comment noted.
260	10/20/2020	MetroQuest	4: Interactive Map	Traffic	are they ever going to power the lights at this intersection	Your comment has been forwarded to the area office for consideration.
261	10/20/2020	MetroQuest	4: Interactive Map	Economy	Cannot lose these businesses	TxDOT aims to develop and operate an integrated transportation system that provides reliable and accessible mobility and enables economic growth.
262	10/20/2020	MetroQuest	4: Interactive Map	Economy	Dont want to loose any businesses in the community	TxDOT aims to develop and operate an integrated transportation system that provides reliable and accessible mobility and enables economic growth.
263	10/20/2020	MetroQuest	4: Interactive Map	Bike/Pedestrian	Include bicycle lanes	Pedestrian and bicycle needs will be assessed and the project design will adhere to all applicable state and federal guidelines.

264	10/20/2020	MetroQuest	4: Interactive Map	General Comment	lots of 18 wheeler traffic	Comment noted.
265	10/20/2020	MetroQuest	4: Interactive Map	General Comment	No other concern	Comment noted.
266	10/20/2020	MetroQuest	4: Interactive Map	General Comment	quickest way to get to I20 from Beaumont	Comment noted.
267	10/20/2020	MetroQuest	4: Interactive Map	Safety	Sides need to be redone anyway. That drop off on the shoulder will throw your vehicle if you get near it or try to move to shoulder	Comment noted.
268	10/20/2020	MetroQuest	4: Interactive Map	General Comment	This is great. Working toward completing a project that should have already been completed many years ago before the state moved money.	Comment noted.
269	10/20/2020	MetroQuest	4: Interactive Map	Traffic	turning lanes needs to be place at Cr 219 and at both ends of Loop 149 exits due to School buses safety.	All design concepts under evaluation are preliminary and subject to change. Crossover locations, turning lanes, median details, and signalization details would continue to be analyzed as project design moves forward.
270	10/20/2020	MetroQuest	4: Interactive Map	General Comment	will make 96 a better hy	Comment noted.
271	10/20/2020	MetroQuest	4: Interactive Map	Safety	1007/96 is a dangerous intersection already. Crossing a double roadway with lake and boat traffic could be dangerous.	Comment noted.
272	10/20/2020	MetroQuest	4: Interactive Map	Safety	A caution light was installed in this location after multiple incidents and deaths this improvement needs to happen	Comment noted.
273	10/20/2020	MetroQuest	4: Interactive Map	General Comment	a lot of cross traffic.	Comment noted.
274	10/20/2020	MetroQuest	4: Interactive Map	Safety	Bad Intersection	Comment noted.
275	10/20/2020	MetroQuest	4: Interactive Map	Safety	Blind hill in a 60mph zone ! Prefer a reduced speed or traffic light like installed on hey 69 south of lufkin !	Comment noted.
276	10/20/2020	MetroQuest	4: Interactive Map	Safety	Boats and campers turning in curve is never a good event I have seen several accidents and one fatality at this location	Comment noted.
277	10/20/2020	MetroQuest	4: Interactive Map	Safety	Caution light doesn't get people's attention the way a red light would. This intersection has many accidents because human error	Comment noted.
278	10/20/2020	MetroQuest	4: Interactive Map	Safety	Caution light in a low spot in the road. A higher toad coming from north and south creates a dangerous hazard.	Comment noted.
279	10/20/2020	MetroQuest	4: Interactive Map	Safety/Congestion	congested area and accident prone area	Comment noted.
280	10/20/2020	MetroQuest	4: Interactive Map	General Comment	Create overpass with exit ramps for the 1007 intersection	Comment noted.
281	10/20/2020	MetroQuest	4: Interactive Map	General Comment	cross traffic.	Comment noted.
282	10/20/2020	MetroQuest	4: Interactive Map	Safety	Dangerous blind Intersection	Comment noted.
283	10/20/2020	MetroQuest	4: Interactive Map	Safety	Dangerous Intersection	Comment noted.
284	10/20/2020	MetroQuest	4: Interactive Map	Safety	Dangerous intersection	Comment noted.
285	10/20/2020	MetroQuest	4: Interactive Map	Safety	Dangerous intersection at Lakeland	Comment noted.
286	10/20/2020	MetroQuest	4: Interactive Map	Safety	Dangerous intersections at 1007	Comment noted.
287	10/20/2020	MetroQuest	4: Interactive Map	General Comment	Didn't mean to place this and couldn't delete	Comment noted.
288	10/20/2020	MetroQuest	4: Interactive Map	Congestion	Drivers use turning lane to pass	Comment noted.
289	10/20/2020	MetroQuest	4: Interactive Map	Safety	fm 1007 intersection is needing review of safety	Comment noted.
290	10/20/2020	MetroQuest	4: Interactive Map	Safety	Four lanes way more safe than two.	Comment noted.
291	10/20/2020	MetroQuest	4: Interactive Map	General Comment	Four way	Comment noted.
292	10/20/2020	MetroQuest	4: Interactive Map	General Comment	Hill before intersection when traveling north	Comment noted.
293	10/20/2020	MetroQuest	4: Interactive Map	Safety	Hydroplane on pipeline jill	Comment noted.
294	10/20/2020	MetroQuest	4: Interactive Map	Safety	If lanes are extended to four lanes, safety issues would drastically increase right here specifically as you already cant see southbound traffic. Increasing lane quantity would mean two lanes worth of traffic you cant see.	Comment noted.
295	10/20/2020	MetroQuest	4: Interactive Map	Safety	In EMS I have ran several wrecks in this location due to the hills on both sides of this intersection find a way to lower them instead of wasting money on widening the road	Comment noted.
296	10/20/2020	MetroQuest	4: Interactive Map	Safety	Intersection set below two hills been several accidents and deaths	Comment noted.
297	10/20/2020	MetroQuest	4: Interactive Map	Safety	Lots of accidents because it is between 2 hills	Comment noted.
298	10/20/2020	MetroQuest	4: Interactive Map	Safety	lots of wrecks	Comment noted.
299	10/20/2020	MetroQuest	4: Interactive Map	General Comment	Main road to Brookeland ISD for school pickup and drop off	Comment noted.
300	10/20/2020	MetroQuest	4: Interactive Map	Safety	Major accidents happen at this intersection.	Comment noted.
301	10/20/2020	MetroQuest	4: Interactive Map	Safety/Congestion	Major traffic from school turn blind curve	Comment noted.
302	10/20/2020	MetroQuest	4: Interactive Map	Safety	Many accidents happen at this intersection	Comment noted.

303	10/20/2020	MetroQuest	4: Interactive Map	General Comment	More lanes are always better than less.	Comment noted.
304	10/20/2020	MetroQuest	4: Interactive Map	General Comment	Most drivers do NOT pay attention to blinkers and brake lights.	Comment noted.
305	10/20/2020	MetroQuest	4: Interactive Map	Safety	Multiple wrecks at 1007 intersection	Comment noted.
306	10/20/2020	MetroQuest	4: Interactive Map	Safety	Needs 4 lanes here for safety.	Comment noted.
307	10/20/2020	MetroQuest	4: Interactive Map	Safety/Traffic	Needs a turning lane for safety for people turning into Cr 226. Already been in wreck with three cars for person not slowing down coming over the hill. Also a lot of people will try to pass you on the right .	Comment noted.
308	10/20/2020	MetroQuest	4: Interactive Map	Traffic	Needs widening because of log trucks and people trying to pass in curves. At least some passing lanes would be great.	All design concepts under evaluation are preliminary and subject to change. Crossover locations, turning lanes, median details, and signalization details would continue to be analyzed as project design moves forward.
309	10/20/2020	MetroQuest	4: Interactive Map	Safety	People get into too many accidents from not seeing oncoming traffic from the north.	Comment noted.
310	10/20/2020	MetroQuest	4: Interactive Map	Safety	Residential traffic on both sides of this location are increasing each year. This is a dangerous intersection	Comment noted.
311	10/20/2020	MetroQuest	4: Interactive Map	Safety	Safety issues	Comment noted.
312	10/20/2020	MetroQuest	4: Interactive Map	General Comment	same as traffic issue	Comment noted.
313	10/20/2020	MetroQuest	4: Interactive Map	Traffic	The caution light needs to be a red light!	All design concepts under evaluation are preliminary and subject to change. Crossover locations, turning lanes, median details, and signalization details would continue to be analyzed as project design moves forward.
314	10/20/2020	MetroQuest	4: Interactive Map	Safety	The current roadway configuration creates safety issues as far as passing vehicles. An alternating two-lane roadway with passing sections would be ideal.	Safety analyses will continue throughout design and any recommended safety enhancements as a result of those analyses would be included in the project.
315	10/20/2020	MetroQuest	4: Interactive Map	Safety	The intersection at 1007 is dangerous	Comment noted.
316	10/20/2020	MetroQuest	4: Interactive Map	Safety	There are so many accidents in this area. The lanes have been widened, flashing lights added and speed reduced but still accidents occur all the time. Hopefully this widening of the road way will help lessen the problems in this area.	Safety analyses will continue throughout design and any recommended safety enhancements as a result of those analyses would be included in the project.
317	10/20/2020	MetroQuest	4: Interactive Map	Safety	There is a north and a southbound lane with an open median. People think that it's OK to pass in the median coming up on the caution light.	Comment noted.
318	10/20/2020	MetroQuest	4: Interactive Map	Maintenance	This bridge on and off both ways could use some maintenance as they are rough at all connections	Comment noted.
319	10/20/2020	MetroQuest	4: Interactive Map	Safety	This entire stretch of highway is a safety concern	Comment noted.
320	10/20/2020	MetroQuest	4: Interactive Map	Safety	This intersection has has several accidents in the past	Comment noted.
321	10/20/2020	MetroQuest	4: Interactive Map	Safety	This is a safety issue because it is on top of a hill when you are pulling out of County Road 219 you cannot see the southbound traffic. There's a very short shoulder to pull out on to to get up to 60 miles an hour with the other traffic going south.	Comment noted.
322	10/20/2020	MetroQuest	4: Interactive Map	Safety	This is a safety issue because pulling out of County Road 219 you cannot see oncoming traffic to the left of you because it is on a hill	Comment noted.
323	10/20/2020	MetroQuest	4: Interactive Map	Safety	This is a very unsafe intersection there have been numerous Car wrecks at the center section	Comment noted.
324	10/20/2020	MetroQuest	4: Interactive Map	Congestion	This would solve frequent traffic congestion, especially weekends and holidays	The purpose of the project is to provide a more reliable transportation and hurricane evacuation route, to enhance connectivity and mobility, and to enhance safety. US 96 within the Beaumont District is a critical part of the strategic freight network and provides hurricane evacuation capacity for Southeast Texas and neighboring areas.
325	10/20/2020	MetroQuest	4: Interactive Map	Safety	Traffic too many accidents at intersection	Comment noted.
326	10/20/2020	MetroQuest	4: Interactive Map	Traffic	Use to have a lane to turn on going south and last time they took it away when they restriped the highway	Comment noted.
327	10/20/2020	MetroQuest	4: Interactive Map	Safety	Very dangerous intersection! It needs a traffic light. Caution light is not effective.	Comment noted.
328	10/20/2020	MetroQuest	4: Interactive Map	General Comment	West side of road has a neighborhood with a lot of kids. East side is all timberland. Be better and safer to widen east side	Comment noted.
329	10/20/2020	MetroQuest	4: Interactive Map	General Comment	Will have to widen the Bridge at Loop 149 & car wash.	Comment noted.
330	10/20/2020	MetroQuest	4: Interactive Map	Safety	Without extra lanes in an evacuation drivers are more likely to be unsafe	Comment noted.
331	10/20/2020	MetroQuest	4: Interactive Map	Safety/Congestion	backs up in a evacuation	Comment noted.
332	10/20/2020	MetroQuest	4: Interactive Map	Safety	Bad intersection	Comment noted.
333	10/20/2020	MetroQuest	4: Interactive Map	Safety	Bad intersection	Comment noted.
334	10/20/2020	MetroQuest	4: Interactive Map	Safety	Bad intersection in a curve	Comment noted.
335	10/20/2020	MetroQuest	4: Interactive Map	Safety	bad intersection, loss of life , hard to see oncoming traffic when crossing	Comment noted.
336	10/20/2020	MetroQuest	4: Interactive Map	Congestion	bottle neck at the loop. this could become an issue with summer traffic	Comment noted.

337	10/20/2020	MetroQuest	4: Interactive Map	General Comment	Brookeland town traffic would be impacted until residents are comfortable with the new road system.	Comment noted.
338	10/20/2020	MetroQuest	4: Interactive Map	General Comment	Busy intersection	Comment noted.
339	10/20/2020	MetroQuest	4: Interactive Map	Safety/Congestion	Constant traffic issue. Slower cars can't move over nor is there anywhere to safely pass	Comment noted.
340	10/20/2020	MetroQuest	4: Interactive Map	Safety	dangerous blind spot	Comment noted.
341	10/20/2020	MetroQuest	4: Interactive Map	Safety	Dangerous intersection	Comment noted.
342	10/20/2020	MetroQuest	4: Interactive Map	Safety/Congestion	During evacuation, people turning onto of off of 255 would cause a back up	Comment noted.
343	10/20/2020	MetroQuest	4: Interactive Map	General Comment	Intersection, busy	Comment noted.
344	10/20/2020	MetroQuest	4: Interactive Map	General Comment	Limited visibilty	Comment noted.
345	10/20/2020	MetroQuest	4: Interactive Map	Congestion	Lots of truck traffic. Slower drivers are not well received on single lane highways with few passing areas.	Comment noted.
346	10/20/2020	MetroQuest	4: Interactive Map	General Comment	Lots of turning traffic at this intersection also	Comment noted.
347	10/20/2020	MetroQuest	4: Interactive Map	Safety	lots of wrecks here may need a stop light instead of caution light.	Comment noted.
348	10/20/2020	MetroQuest	4: Interactive Map	General Comment	Make sure that flashing light at 1007 can been seen by both north and south bound traffic. Cut the hill down	Comment noted.
349	10/20/2020	MetroQuest	4: Interactive Map	Safety	many accidents	Comment noted.
350	10/20/2020	MetroQuest	4: Interactive Map	Safety	Many wrecks and deaths at this intersection	Comment noted.
351	10/20/2020	MetroQuest	4: Interactive Map	Safety	Many wrecks at this intersection	Comment noted.
352	10/20/2020	MetroQuest	4: Interactive Map	Safety/Traffic	needs a traffic light, too many wrecks and deaths has happen here. The caution light doesn't help, when you are trying to cross from east or west.	Comment noted.
353	10/20/2020	MetroQuest	4: Interactive Map	Safety	People drive crazy on this stretch of highway, passing in no passing zones on the hills	Comment noted.
354	10/20/2020	MetroQuest	4: Interactive Map	Safety/Congestion	Prevent congested traffic and provide a safe lane to turn off the highway Onto a county road without being hit from behind.	Comment noted.
355	10/20/2020	MetroQuest	4: Interactive Map	Congestion	Quite often traffic issues with 18 wheelers and vehicles towing boats.	Comment noted.
356	10/20/2020	MetroQuest	4: Interactive Map	General Comment	Reducing number of lanes creates bottleneck.	Comment noted.
357	10/20/2020	MetroQuest	4: Interactive Map	Safety	Several deaths in this area, needs 4 lanes.	Comment noted.
358	10/20/2020	MetroQuest	4: Interactive Map	Congestion	Slow traffic with little room to pass	Comment noted.
359	10/20/2020	MetroQuest	4: Interactive Map	General Comment	Store traffic turning dwi	Comment noted.
360	10/20/2020	MetroQuest	4: Interactive Map	Traffic	This area needs to keep the turning lane.	All design concepts under evaluation are preliminary and subject to change. Crossover locations, turning lanes, median details, and signalization details would continue to be analyzed as project design moves forward.
361	10/20/2020	MetroQuest	4: Interactive Map	Congestion	this spot has always been a traffic issue. lots of accidents with people trying to cross the highway or merge with traffic	Comment noted.
362	10/20/2020	MetroQuest	4: Interactive Map	General Comment	Traffic	Comment noted.
363	10/20/2020	MetroQuest	4: Interactive Map	Traffic	Traffic signal needed	All design concepts under evaluation are preliminary and subject to change. Crossover locations, turning lanes, median details, and signalization details would continue to be analyzed as project design moves forward.
364	10/20/2020	MetroQuest	4: Interactive Map	General Comment	Very large hill.	Comment noted.
365	10/20/2020	MetroQuest	4: Interactive Map	Safety	When I slow down to turn left onto my street most do not slow down and they almost rear end me. My mom is worried she will be hit when she turns. Drivers do NOT pay attention.	Comment noted.
366	10/20/2020	MetroQuest	4: Interactive Map	Safety/Congestion	When the lanes neck down from two lanes to one during an evacuation route the traffic always slows.	Comment noted.
367	10/20/2020	MetroQuest	4: Interactive Map	Traffic	Would most likely need to keep a turning lane here as this road leads to the local school	All design concepts under evaluation are preliminary and subject to change. Crossover locations, turning lanes, median details, and signalization details would continue to be analyzed as project design moves forward.
368	10/21/2020	MetroQuest	4: Interactive Map	Environment	A natural creek runs through here that feeds into lake rayburn.	Comment noted.
369	10/21/2020	MetroQuest	4: Interactive Map	Environment	Creek runs through here.	Comment noted.
370	10/21/2020	MetroQuest	4: Interactive Map	Environment	Giant Red Cockaded Wood Peckers Live and nest in this area. They are endangered.	In accordance with the National Environmental Policy Act (NEPA), during development of the project design, TxDOT makes every effort to avoid and minimize potential impacts to environmental resources. Where impacts are unavoidable, TxDOT proposes appropriate mitigation for the expected impacts.

371	10/21/2020	MetroQuest	4: Interactive Map	Environment	Giant Red Cockaded WoodPeckers Live and nest in this area. They are endangered.	In accordance with the National Environmental Policy Act (NEPA), during development of the project design, TxDOT makes every effort to avoid and minimize potential impacts to environmental resources. Where impacts are unavoidable, TxDOT proposes appropriate mitigation for the expected impacts.
372	10/21/2020	MetroQuest	4: Interactive Map	General Comment	This location is locally known as "pipe line hill". Although I'm not certain if still used, once it was an active pipeline and will be a concern during construction.	Comment noted.
373	10/21/2020	MetroQuest	4: Interactive Map	General Comment	North-South evac route	Comment noted.
374	10/21/2020	MetroQuest	4: Interactive Map	General Comment	This would help move more folks during an evacuation.	Comment noted.
375	10/21/2020	MetroQuest	4: Interactive Map	General Comment	To increase the volume of traffic in a emergency to the north and clear up traffic in the southren portion of the county	Comment noted.
376	10/21/2020	MetroQuest	4: Interactive Map	Congestion	Traffic during hurricane evacuation gets bottle necked from 4 lane to 2 lane.	The purpose of the project is to provide a more reliable transportation and hurricane evacuation route, to enhance connectivity and mobility, and to enhance safety. US 96 within the Beaumont District is a critical part of the strategic freight network and provides hurricane evacuation capacity for Southeast Texas and neighboring areas.
377	10/21/2020	MetroQuest	4: Interactive Map	Safety/Congestion	US 96 is a major hurricane evacuation route for the south this area chokes the route down from two lanes to one	Comment noted.
378	10/21/2020	MetroQuest	4: Interactive Map	General Comment	When people cross 255, they have an idea of where they are going. Hurricane evacuation routes, don't normally bottleneck in those areas. Hurricane Rita was the exception to this rule. People who had never had to evacuate, panicked and brought low boys, bass boats, travel trailers, (although I can understand this one), failing to think about gasoline, water and other supplies. I am not sure that the evacuation route would be a benefit.	Comment noted.
379	10/21/2020	MetroQuest	4: Interactive Map	Safety	The caution light at fm 1007 is very deadly have been lots of bad wrecks there	Comment noted.
380	10/21/2020	MetroQuest	4: Interactive Map	Safety	149 loop goes to the brookeland school pleas take extra prcaution to safe guard our kids.	Safety analyses will continue throughout design and any recommended safety enhancements as a result of those analyses would be included in the project.
381	10/21/2020	MetroQuest	4: Interactive Map	Safety	accident increase	Comment noted.
382	10/21/2020	MetroQuest	4: Interactive Map	Safety	Blind hill in both directions!	Comment noted.
383	10/21/2020	MetroQuest	4: Interactive Map	Congestion	Early morning & afternoon school traffic is very hectic	Comment noted.
384	10/21/2020	MetroQuest	4: Interactive Map	Traffic	Excessive speeds traveling north. Install a Traffic light please.	All design concepts under evaluation are preliminary and subject to change. Crossover locations, turning lanes, median details, and signalization details would continue to be analyzed as project design moves forward.
385	10/21/2020	MetroQuest	4: Interactive Map	General Comment	Get rid of the curve and put in an exit for boater and camper traffic. If they are not familiar with the area or familiar with pulling a boat or camper the can't navigate the turn.	Comment noted.
386	10/21/2020	MetroQuest	4: Interactive Map	Safety/Traffic	Glendale neighborhood entering is dangerous without a turning lane	Comment noted.
387	10/21/2020	MetroQuest	4: Interactive Map	Safety/Traffic	Install a traffic light. Excessive speeds drivers teaveling north do not slow down to the speed limit.	Comment noted.
388	10/21/2020	MetroQuest	4: Interactive Map	Traffic	Intersection no light	All design concepts under evaluation are preliminary and subject to change. Crossover locations, turning lanes, median details, and signalization details would continue to be analyzed as project design moves forward.
389	10/21/2020	MetroQuest	4: Interactive Map	Safety	Intersection with a lot of major accidents, due to commercial vehicle traffic and visibility issues.	Comment noted.
390	10/21/2020	MetroQuest	4: Interactive Map	General Comment	Left turns on 75 mph road	Comment noted.
391	10/21/2020	MetroQuest	4: Interactive Map	Safety/Congestion	Log trucks move slower and make this stretch of road unsafe.	Comment noted.
392	10/21/2020	MetroQuest	4: Interactive Map	Safety	Needs a turning. Very dangours turn off for cr 226	Comment noted.
393	10/21/2020	MetroQuest	4: Interactive Map	Safety	Northbound traffic on 96 turning East on CR 219 cannot see 100 yards of traffic traveling South on 96. Please take this into consideration in designing the roadway at this intersection.	Safety analyses will continue throughout design and any recommended safety enhancements as a result of those analyses would be included in the project.
394	10/21/2020	MetroQuest	4: Interactive Map	General Comment	Passing of cars turning on hill tops	Comment noted.
395	10/21/2020	MetroQuest	4: Interactive Map	Traffic	Red light needed	All design concepts under evaluation are preliminary and subject to change. Crossover locations, turning lanes, median details, and signalization details would continue to be analyzed as project design moves forward.
396	10/21/2020	MetroQuest	4: Interactive Map	General Comment	residents entering and exiting highway	Comment noted.
397	10/21/2020	MetroQuest	4: Interactive Map	Safety	Tall hill . Traffic coming from neighborhoods onto 96 ls dangerous	Comment noted.
398	10/21/2020	MetroQuest	4: Interactive Map	General Comment	THE HILLS ON BOTH SIDE OF INTERSECTION NEED TO BE CUT DOWN TO BUSY OF AN INTERSECTION.	Comment noted.

399	10/21/2020	MetroQuest	4: Interactive Map	Safety/Congestion	This area is known as a congestion spot caused by drivers driving below the speed limit. Currently, the double yellow line (no passing zone) increases the congestion. When adding construction work along this route, traffic flow will be extremely congested.	Comment noted.
400	10/21/2020	MetroQuest	4: Interactive Map	Safety	This is a dangerous intersection already. If the merging were there, it would just add to the problem. It is hard to see coming down the hill at the light.	Comment noted.
401	10/21/2020	MetroQuest	4: Interactive Map	Safety	TXDOT resurfaced the road and left a 2 to 3 inch lip on the edge of the travel lane, there has been a lot of wrecks on this stretch of highway between RR 255 and LP 149 in Sabine County	Comment noted.
402	10/21/2020	MetroQuest	4: Interactive Map	Safety	Very dangerous for all. Its on top of a hill. Need to cut ot down	Comment noted.
403	10/21/2020	MetroQuest	4: Interactive Map	Safety	Way too many accidents at this intersection over the years.	Comment noted.
404	10/21/2020	MetroQuest	4: Interactive Map	Safety	Wrecks happen here all the time need to put in a stop light.	Comment noted.
405	10/21/2020	MetroQuest	4: Interactive Map	Congestion	back-up of traffic	Comment noted.
406	10/21/2020	MetroQuest	4: Interactive Map	Safety	Getting behind log trucks is dangerous.	Comment noted.
407	10/21/2020	MetroQuest	4: Interactive Map	Traffic	Intersection no light	All design concepts under evaluation are preliminary and subject to change. Crossover locations, turning lanes, median details, and signalization details would continue to be analyzed as project design moves forward.
408	10/21/2020	MetroQuest	4: Interactive Map	General Comment	Merging, slow, and cross traffic.	Comment noted.
409	10/21/2020	MetroQuest	4: Interactive Map	Safety	NEED RUMBLE STRIPES AND OR FLASHING RED STOP SIGN ON EAST & WEST SIDE OF 1007	Comment noted.
410	10/21/2020	MetroQuest	4: Interactive Map	Safety	Sight distance problems from county road and driveway approaches to highway.	Comment noted.
411	10/21/2020	MetroQuest	4: Interactive Map	General Comment	Slower traffic along this corridor.	Comment noted.
412	10/21/2020	MetroQuest	4: Interactive Map	Safety	The 60 mph speed limit through there is a definite item that should be addressed. If traffic evacuation is a concern, raise the limit. The log trucks ride your bumper, as is now. If you try to stay at 60, they "push" you to drive faster.	Comment noted.
413	10/21/2020	MetroQuest	4: Interactive Map	Safety	The intersection of 96 and 1007 has seen it's fair share of accidents in the past. Perhaps a reduced speed limit and appropriate design should be considered for this intersection	Comment noted.
414	10/21/2020	MetroQuest	4: Interactive Map	Safety	There is no easy way to get into our road because of the blind hill. People almost hit us going 75MPH all the time.	Comment noted.
415	10/21/2020	MetroQuest	4: Interactive Map	Safety	This intersection has been a very bad area for major wreck with fatalities, sight distance is poor, lot of log trucks entering us 96 from FM1007	Comment noted.
416	10/21/2020	MetroQuest	4: Interactive Map	Safety/Traffic	This intersection has caused multiple accidents. A blinking light and stop sign are insufficient at this junction.	Comment noted.
417	10/21/2020	MetroQuest	4: Interactive Map	General Comment	Traffic	Comment noted.
418	10/22/2020	MetroQuest	4: Interactive Map	Environment	Drainage from carwash	Comment noted.
419	10/22/2020	MetroQuest	4: Interactive Map	Congestion	bottlenecked down roads cause slow downs and irritations	The purpose of the project is to provide a more reliable transportation and hurricane evacuation route, to enhance connectivity and mobility, and to enhance safety. US 96 within the Beaumont District is a critical part of the strategic freight network and provides hurricane evacuation capacity for Southeast Texas and neighboring areas.
420	10/22/2020	MetroQuest	4: Interactive Map	Congestion	Foresee bottleneck effecting further northbound traffic	The purpose of the project is to provide a more reliable transportation and hurricane evacuation route, to enhance connectivity and mobility, and to enhance safety. US 96 within the Beaumont District is a critical part of the strategic freight network and provides hurricane evacuation capacity for Southeast Texas and neighboring areas.
421	10/22/2020	MetroQuest	4: Interactive Map	General Comment	Informative	Comment noted.
422	10/22/2020	MetroQuest	4: Interactive Map	Congestion	No more congestion	Comment noted.
423	10/22/2020	MetroQuest	4: Interactive Map	Outside Limits	TxDOT really should consider widening 96 even farther north than Loop 149 for people from Southeast Texas to be able to evacuate easier.	Comment noted.
424	10/22/2020	MetroQuest	4: Interactive Map	Safety/Traffic	The 90 degree turn onto Loop 149 really needs to be an easier turn from 96. Turning left from a dead stop and waiting for southbound traffic is very dangerous especially if you are towing an RV or a boat.	Comment noted.
425	10/22/2020	MetroQuest	4: Interactive Map	Safety	Bad intersection	Comment noted.
426	10/22/2020	MetroQuest	4: Interactive Map	Safety	Dangerous intersection at 1007	Comment noted.
427	10/22/2020	MetroQuest	4: Interactive Map	Safety	Joining traffic from 1007	Comment noted.
428	10/22/2020	MetroQuest	4: Interactive Map	Safety	narrow roads and large vehicle traffic causes others to want to pass and causes unsafe driving	Comment noted.
429	10/22/2020	MetroQuest	4: Interactive Map	Safety	Safer for turning traffic	Comment noted.
430	10/22/2020	MetroQuest	4: Interactive Map	General Comment	School exit/ entrance	Comment noted.
431	10/22/2020	MetroQuest	4: Interactive Map	General Comment	See my comments on "Traffic Issues". Which is a Traffic and Safety issue.	Comment noted.

432	10/22/2020	MetroQuest	4: Interactive Map	Safety	Several accidents along this stretch of highway	Comment noted.
433	10/22/2020	MetroQuest	4: Interactive Map	Safety	Somewhat blind intersection need improvement	Comment noted.
434	10/22/2020	MetroQuest	4: Interactive Map	Safety	There's a hill just north of 219/96 intersection. Vehicles coming from 219 turning N or S onto 96 cannot see traffic traveling southbound on 96 until after they crest the hill which is dangerously close to the intersection. I'm surprised there's not more accidents at this location.	Comment noted.
435	10/22/2020	MetroQuest	4: Interactive Map	Safety	There's a lot of left turning vehicles at this intersection in the mornings. Many are for Brookeland ISD. There has been a number of accidents at this intersection.	Comment noted.
436	10/22/2020	MetroQuest	4: Interactive Map	Safety	This intersection is the most dangerous area on the route. If you are trying to turn North from 1007, the northbound traffic is coming too fast to pull out safely. A new interchange would be necessary.	Safety analyses will continue throughout design and any recommended safety enhancements as a result of those analyses would be included in the project.
437	10/22/2020	MetroQuest	4: Interactive Map	Safety	This intersection is very dangerous.	Comment noted.
438	10/22/2020	MetroQuest	4: Interactive Map	Safety	Traffic to and from school on loop 149 causes many accidents	Comment noted.
439	10/22/2020	MetroQuest	4: Interactive Map	Congestion	18 wheeler traffic causes slow downs	Comment noted.
440	10/22/2020	MetroQuest	4: Interactive Map	General Comment	4 lane is better than 2 lane....always	Comment noted.
441	10/22/2020	MetroQuest	4: Interactive Map	Congestion	Congested	Comment noted.
442	10/22/2020	MetroQuest	4: Interactive Map	General Comment	Currently highway configuration combined with slower speed limits has many thru traffic vehicles using turn lanes as passing lanes.	Comment noted.
443	10/22/2020	MetroQuest	4: Interactive Map	Safety/Congestion	From 1007 to 255 is very hilly and curvy. Log trucks and 18 wheelers consistently travel way below posted speed limits, some times as low as 45-50 MPH. There's no place to safely pass on this section of the highway. I've seen a numbers of people pass these big trucks in places they shouldn't. I travel this road every day to go to work.	Comment noted.
444	10/22/2020	MetroQuest	4: Interactive Map	Safety	Narrowing of roadway becomes safety issue.	Comment noted.
445	10/22/2020	MetroQuest	4: Interactive Map	General Comment	We need more room	Comment noted.
446	10/22/2020	MetroQuest	4: Interactive Map	General Comment	Where 1007 intersects 96N	Comment noted.
447	10/22/2020	MetroQuest	4: Interactive Map	Traffic	Would you put a light at 255 and 96?	All design concepts under evaluation are preliminary and subject to change. Crossover locations, turning lanes, median details, and signalization details would continue to be analyzed as project design moves forward.
448	10/23/2020	MetroQuest	4: Interactive Map	Environment	Protect the forest	Comment noted.
449	10/23/2020	MetroQuest	4: Interactive Map	Environment	The trees	Comment noted.
450	10/23/2020	MetroQuest	4: Interactive Map	Environment	Water run off into the lake, protect the Rayburn watershed	Comment noted.
451	10/23/2020	MetroQuest	4: Interactive Map	General Comment	All of this area needs to be widened for the sake of transitioning traffic northbound. It is incredibly necessary.	Comment noted.
452	10/23/2020	MetroQuest	4: Interactive Map	General Comment	As is, road is to narrow.	Comment noted.
453	10/23/2020	MetroQuest	4: Interactive Map	General Comment	Busy intersection need to make contra flow	Comment noted.
454	10/23/2020	MetroQuest	4: Interactive Map	Congestion	congestion of traffic	Comment noted.
455	10/23/2020	MetroQuest	4: Interactive Map	Congestion	Constricted flow	Comment noted.
456	10/23/2020	MetroQuest	4: Interactive Map	General Comment	Let's more traffic move	Comment noted.
457	10/23/2020	MetroQuest	4: Interactive Map	General Comment	Road narrows	Comment noted.
458	10/23/2020	MetroQuest	4: Interactive Map	General Comment	Roads need to be 4 lanes.	Comment noted.
459	10/23/2020	MetroQuest	4: Interactive Map	Safety/Congestion	There's not a lot of room traffic usually is backup during evacuations	Comment noted.
460	10/23/2020	MetroQuest	4: Interactive Map	General Comment	To speed up traffic	Comment noted.
461	10/23/2020	MetroQuest	4: Interactive Map	Congestion	Traffic Jams	Comment noted.
462	10/23/2020	MetroQuest	4: Interactive Map	Economy	concern for small business owners losing property and hurting business	TxDOT aims to develop and operate an integrated transportation system that provides reliable and accessible mobility and enables economic growth.
463	10/23/2020	MetroQuest	4: Interactive Map	Outside Limits	Although not in the proposed plan, the next stretch of about 5 miles is the absolute worst road i've ever driven. It's slick, it holds water, and it is a supreme disaster waiting to happen for an unsuspecting driver from another area. PLEASE HELP with this stretch into PINELAND!	This comment is for an area outside of the proposed project limits. Further information on other projects in the TxDOT Beaumont District, please visit: <a href="https://www.txdot.gov/inside-txdot/projects/project-tracker.html">https://www.txdot.gov/inside-txdot/projects/project-tracker.html</a>
464	10/23/2020	MetroQuest	4: Interactive Map	Safety	And cause there's many trucker drives on this road it's cause a hazard	Comment noted.
465	10/23/2020	MetroQuest	4: Interactive Map	Safety	As is, this is a dangerous intersection	Comment noted.

466	10/23/2020	MetroQuest	4: Interactive Map	Traffic	Cross traffic. Needs overpass.	All design concepts under evaluation are preliminary and subject to change. Crossover locations, turning lanes, median details, and signalization details would continue to be analyzed as project design moves forward.
467	10/23/2020	MetroQuest	4: Interactive Map	Safety	Hard to see southbound traffic when entering 96	Comment noted.
468	10/23/2020	MetroQuest	4: Interactive Map	Safety	Hard to see traffic when entering hwy	Comment noted.
469	10/23/2020	MetroQuest	4: Interactive Map	General Comment	Hills are dangerous needs to be cut down. And made 4 lanes.	Comment noted.
470	10/23/2020	MetroQuest	4: Interactive Map	Safety	Hills on both sides of the light causes people to overlook traffic. They look one way, then the other, then drive across the highway. Between the time they look and go, a vehicle has crossed over the hill and approaching the intersection. A lot of people have been killed here.	Comment noted.
471	10/23/2020	MetroQuest	4: Interactive Map	General Comment	hwy 1007 intersection flattening hill on southside of intersection and straitening curve to give better visibility could be an economical solution	Comment noted.
472	10/23/2020	MetroQuest	4: Interactive Map	General Comment	Intersection	Comment noted.
473	10/23/2020	MetroQuest	4: Interactive Map	General Comment	it is very hard to see traffic coming out of FM 1007	Comment noted.
474	10/23/2020	MetroQuest	4: Interactive Map	Safety	People pass in middle lane. VERY DANGEROUS	Comment noted.
475	10/23/2020	MetroQuest	4: Interactive Map	General Comment	Sight distance at intersection	Comment noted.
476	10/23/2020	MetroQuest	4: Interactive Map	General Comment	Sight distance at intersection	Comment noted.
477	10/23/2020	MetroQuest	4: Interactive Map	General Comment	The lanes come together just before a curve. Some people have trouble merging.	Comment noted.
478	10/23/2020	MetroQuest	4: Interactive Map	Safety	This is currently a very dangerous intersection	Comment noted.
479	10/23/2020	MetroQuest	4: Interactive Map	Safety	Too many accidents	Comment noted.
480	10/23/2020	MetroQuest	4: Interactive Map	Safety	Too many accidents here.	Comment noted.
481	10/23/2020	MetroQuest	4: Interactive Map	Congestion	Too much traffic	Comment noted.
482	10/23/2020	MetroQuest	4: Interactive Map	Congestion	Two lanes backs up traffic behind big trucks	Comment noted.
483	10/23/2020	MetroQuest	4: Interactive Map	Congestion	we have a entrance from our property on top of a hill here and it is almost impossible to pull out from.	Comment noted.
484	10/23/2020	MetroQuest	4: Interactive Map	Safety	Wrecks	Comment noted.
485	10/23/2020	MetroQuest	4: Interactive Map	Congestion	255 , lots of logging traffic and boat rv traffic.	Comment noted.
486	10/23/2020	MetroQuest	4: Interactive Map	Safety	Bad accident area.	Comment noted.
487	10/23/2020	MetroQuest	4: Interactive Map	Congestion	Bottle neck! When there is heavey traffic.	Comment noted.
488	10/23/2020	MetroQuest	4: Interactive Map	General Comment	Flow of the RR255 intersection	Comment noted.
489	10/23/2020	MetroQuest	4: Interactive Map	Congestion	lot of traffic during weekends, holidays and evacuations. Project was help.	Comment noted.
490	10/23/2020	MetroQuest	4: Interactive Map	Safety/Congestion	Needs to be widened to keep traffic flowing at a normal speed. Get behind big trucks your just stuck or people take chances in passing and causes wrecks	Comment noted.
491	10/23/2020	MetroQuest	4: Interactive Map	Safety	Reoccurring Accidents	Comment noted.
492	10/23/2020	MetroQuest	4: Interactive Map	Safety	Safety concerns	Comment noted.
493	10/23/2020	MetroQuest	4: Interactive Map	General Comment	Slow down for townns	Comment noted.
494	10/23/2020	MetroQuest	4: Interactive Map	Traffic	There needs to be a overpass here.	All design concepts under evaluation are preliminary and subject to change. Crossover locations, turning lanes, median details, and signalization details would continue to be analyzed as project design moves forward.
495	10/23/2020	MetroQuest	4: Interactive Map	General Comment	There's a lot log trucker drivers that drive this road	Comment noted.
496	10/23/2020	MetroQuest	4: Interactive Map	Safety	We Live on 200 and anytime there is a wreck on this stretch of 96 traffic is detoured on our dirt road and it is small and narrow and NOT SAFE for traffic. Big trucks use our dirt road as a cut thru to not be on 96 and our road stays torn up from all the traffic.	Comment noted.
497	10/23/2020	MetroQuest	4: Interactive Map	Safety	Wrecks	Comment noted.
498	10/24/2020	MetroQuest	4: Interactive Map	Environment	Environment. Leave alone!!!!!!!!!!!!	In accordance with the National Environmental Policy Act (NEPA), during development of the project design, TxDOT makes every effort to avoid and minimize potential impacts to environmental resources. Where impacts are unavoidable, TxDOT proposes appropriate mitigation for the expected impacts.
499	10/24/2020	MetroQuest	4: Interactive Map	General Comment	Leave alone	Comment noted.
500	10/24/2020	MetroQuest	4: Interactive Map	General Comment	Leave alone!!!!	Comment noted.
501	10/24/2020	MetroQuest	4: Interactive Map	General Comment	Narrowing of road creates bottlenecks	Comment noted.

502	10/24/2020	MetroQuest	4: Interactive Map	General Comment	This is important!	Comment noted.
503	10/24/2020	MetroQuest	4: Interactive Map	General Comment	traffic	Comment noted.
504	10/24/2020	MetroQuest	4: Interactive Map	Safety/Congestion	US 96 is a main evac route. Congestion gets dangerous when evac is going on.	Comment noted.
505	10/24/2020	MetroQuest	4: Interactive Map	General Comment	We need 4 lanes	Comment noted.
506	10/24/2020	MetroQuest	4: Interactive Map	Right of Way	Biggest concern is displacing residents and businesses all while protecting the environment. I believe buying off both sides of the road may be more expensive but accomplishes all three objectives.	Comment noted.
507	10/24/2020	MetroQuest	4: Interactive Map	Noise	I don't like the widening of the highway, Road noise is already too loud this will just cause more road noise. if this is done, it should go to the east side so less people are impacted.	A noise analysis will be conducted in accordance with state and federal guidelines and the results will be shared as part of the Environmental Assessment prepared for the project.
508	10/24/2020	MetroQuest	4: Interactive Map	General Comment	My house that we've worked tirelessly to buy and build a life. We don't need a hwy that is bigger. We need a wall to protect the neighborhood from the existing traffic now.	Comment noted.
509	10/24/2020	MetroQuest	4: Interactive Map	Noise	This is My house. I'm not happy about the expansion. The neighborhood is already too noisy due to vehicles and eighteen wheelers jake-breaking all day long.	A noise analysis will be conducted in accordance with state and federal guidelines and the results will be shared as part of the Environmental Assessment prepared for the project.
510	10/24/2020	MetroQuest	4: Interactive Map	Safety	Dangerous intersection	Comment noted.
511	10/24/2020	MetroQuest	4: Interactive Map	Safety	Dangerous intersection	Comment noted.
512	10/24/2020	MetroQuest	4: Interactive Map	Safety	Dangerous intersection	Comment noted.
513	10/24/2020	MetroQuest	4: Interactive Map	Safety	Intersection with FM 1007 needs better traffic control. Due to hill to North of intersection it is hard to safely merger with traffic going South.	Comment noted.
514	10/24/2020	MetroQuest	4: Interactive Map	Safety/Congestion	Logging trucks on the roads and peole passing them. This would give people a safe option of passing.	Comment noted.
515	10/24/2020	MetroQuest	4: Interactive Map	Safety	Lots of accidents	Comment noted.
516	10/24/2020	MetroQuest	4: Interactive Map	Safety	Lots of car wrecks here	Comment noted.
517	10/24/2020	MetroQuest	4: Interactive Map	Safety	Many accidents here due to turning traffic	Comment noted.
518	10/24/2020	MetroQuest	4: Interactive Map	Traffic	merging traffic gets confused. Instead of right lane merging left it should be left lane merging right.	All design concepts under evaluation are preliminary and subject to change. Crossover locations, turning lanes, median details, and signalization details would continue to be analyzed as project design moves forward.
519	10/24/2020	MetroQuest	4: Interactive Map	Safety	The speed limit is 70 mph. Hills/curves don't allow much opportunity to pass safely.	Comment noted.
520	10/24/2020	MetroQuest	4: Interactive Map	Safety	Too many car wrecks	Comment noted.
521	10/24/2020	MetroQuest	4: Interactive Map	Safety/Congestion	Vehicles pulling out of side roads and store present possible accidents for through traffic	Comment noted.
522	10/24/2020	MetroQuest	4: Interactive Map	Outside Limits	Why stop in Brookeland. There are many safety issues on 96 going thru Pineland. One being no turn lanes.	This comment is for an area outside of the proposed project limits. Further information on other projects in the TxDOT Beaumont District, please visit: <a href="https://www.txdot.gov/inside-txdot/projects/project-tracker.html">https://www.txdot.gov/inside-txdot/projects/project-tracker.html</a>
523	10/24/2020	MetroQuest	4: Interactive Map	Congestion	Congested at times	Comment noted.
524	10/24/2020	MetroQuest	4: Interactive Map	Safety	Dangerous area where 96 goes back to two lane. Blind spots for residents coming in from side streets	Comment noted.
525	10/24/2020	MetroQuest	4: Interactive Map	Congestion	No passing lanes until you reach the stores in Brookeland cause impatient drivers to pass in no passing lanes	Comment noted.
526	10/24/2020	MetroQuest	4: Interactive Map	Congestion	Too many vehicles. The area can get very busy.	Comment noted.
527	10/24/2020	MetroQuest	4: Interactive Map	Safety/Congestion	Traveling north and turning left onto Loop 149 is sometimes a problem due to oncoming traffic. The vehicle trying to turn can't see the traffic coming south and around the curve at 70 mph all while the north bound traffic is traveling at 70 mph. The vehicle in the turning lane (which is short) can be stuck in that lane for what seems like an eternity, often is pulling a trailer of some kind and needs to make the turn SS quickly as possible.	Comment noted.
528	10/24/2020	MetroQuest	4: Interactive Map	Safety/Congestion	We need 4 lanes. Due to the logging trucks peole are alwats passing due to them driving so very slow.	Comment noted.
529	10/25/2020	MetroQuest	4: Interactive Map	Safety/Traffic	This intersection has caused too many accidents and fatalities. There needs to be either a stop light, or 4 way stop signs.	Comment noted.
530	10/28/2020	MetroQuest	4: Interactive Map	General Comment	Hurricane evacuees will bottle neck at this point	Comment noted.
531	10/28/2020	MetroQuest	4: Interactive Map	Safety	Too many car accidents	Comment noted.
532	10/28/2020	MetroQuest	4: Interactive Map	General Comment	Traffic will bottle neck	Comment noted.
533	11/2/2020	MetroQuest	4: Interactive Map	Congestion	currently traffic trying to leave from the lake will have difficulty being able to enter onto 96 N due to the heavy flow of traffic	Comment noted.
534	11/2/2020	MetroQuest	4: Interactive Map	Safety	Dangerous.	Comment noted.
535	11/2/2020	MetroQuest	4: Interactive Map	General Comment	major intersection, needs traffic control	Comment noted.

536	11/2/2020	MetroQuest	4: Interactive Map	General Comment	needs traffic control	Comment noted.
537	11/2/2020	MetroQuest	4: Interactive Map	Congestion	currently traffic will come from the south east and west all congest to go north on a two way road	The purpose of the project is to provide a more reliable transportation and hurricane evacuation route, to enhance connectivity and mobility, and to enhance safety. US 96 within the Beaumont District is a critical part of the strategic freight network and provides hurricane evacuation capacity for Southeast Texas and neighboring areas.
538	11/2/2020	MetroQuest	4: Interactive Map	General Comment	major intersection needs better traffic control	Comment noted.
539	11/2/2020	MetroQuest	4: Interactive Map	Safety/Congestion	Traffic is heavy here. People pass in the middle turning lane. It's dangerous there and on top of the big hill.	Comment noted.
540	11/3/2020	MetroQuest	4: Interactive Map	Safety	Hilly intersection, have to pull out onto 96 almost blindly	Comment noted.
541	11/3/2020	MetroQuest	4: Interactive Map	Safety	Intersection with dangerous blind curve	Comment noted.
542	11/3/2020	MetroQuest	4: Interactive Map	Safety/Congestion	Merging is dangerous due to slow traffic just turning on from 255	Comment noted.
543	11/4/2020	MetroQuest	4: Interactive Map	Safety/Noise	My home is located in this area and the widening of the road will produce more traffic noise and of course affect my property. It will also present safety issues when entering and exiting county road 228 onto 96. It's already pretty scary trying to turn into the road from 96 when traffic is coming both directions...you feel as though you are going to get hit.	The proposed project would widen the roadway from two to four lanes with a grassy median. This would enhance safety and capacity for everyday operations as well as emergency evacuations. A noise analysis will be conducted in accordance with state and federal guidelines and the results will be shared as part of the Environmental Assessment prepared for the project.
544	11/4/2020	MetroQuest	4: Interactive Map	Safety	Safety issue entering and exiting all county roads from 96. Not much room for error.	Comment noted.
545	11/4/2020	MetroQuest	4: Interactive Map	Safety	Lots of accidents occur at this intersection and this is definitely a concern	Comment noted.
546	11/6/2020	MetroQuest	4: Interactive Map	Safety	More lanes for evacuation and return of traffic	Comment noted.
547	11/6/2020	MetroQuest	4: Interactive Map	Safety	FREQUENT HISTORY OF WRECKS AT THIS INTERSECTION.	Comment noted.
548	11/6/2020	MetroQuest	4: Interactive Map	Congestion	Speeding traffic passes in turning lanes from county line to 1007	Comment noted.
549	11/6/2020	MetroQuest	4: Interactive Map	Safety/Congestion	Blind roads on hills in Brookeland and out of town congestion	Comment noted.
550	11/7/2020	MetroQuest	4: Interactive Map	General Comment	Needed during hurricane season	Comment noted.
551	11/7/2020	MetroQuest	4: Interactive Map	General Comment	Would prefer not to do anything	Comment noted.
552	11/7/2020	MetroQuest	4: Interactive Map	Safety	1007 to 96 is a hazards and entry to 96 from Lakeland dangerous	Comment noted.
553	11/7/2020	MetroQuest	4: Interactive Map	Safety/Traffic	traffic lights and turn lanes to keep safe.	Comment noted.
554	11/7/2020	MetroQuest	4: Interactive Map	Traffic	turn lanes to keep traffic flow.	All design concepts under evaluation are preliminary and subject to change. Crossover locations, turning lanes, median details, and signalization details would continue to be analyzed as project design moves forward.
555	11/8/2020	MetroQuest	4: Interactive Map	Safety	Lots of accidents at this intersection	Comment noted.
556	11/8/2020	MetroQuest	4: Interactive Map	General Comment	Lots of turning onto this road due to school traffic	Comment noted.
557	11/8/2020	MetroQuest	4: Interactive Map	Safety	Potential accidents at this site	Comment noted.
558	11/10/2020	MetroQuest	4: Interactive Map	General Comment	Crossroads	Comment noted.
559	11/10/2020	MetroQuest	4: Interactive Map	Safety	Turning into businesses or connecting roads is very dangerous.	Comment noted.
560	11/10/2020	MetroQuest	4: Interactive Map	Safety	Shoulders seem to be too narrow for disabled vehicles or slow vehicles pulling over. Big rigs going both ways is very dangerous on this stretch of highway.	Comment noted.
561	11/14/2020	MetroQuest	4: Interactive Map	Safety/Congestion	This Is The First Restriction To A 2 Lane Roadway After The Extreme Bottleneck Encountered In Lumberton And Tends To Congest Flow During Evacuation	Comment noted.
562	11/14/2020	MetroQuest	4: Interactive Map	General Comment	Too narrow	Comment noted.
563	11/14/2020	MetroQuest	4: Interactive Map	Safety	Intersection Of FM1007 & US 96 Is A Very Dangerous Intersection With Limited Visibility Both North & South	Comment noted.
564	11/14/2020	MetroQuest	4: Interactive Map	General Comment	Lots of log trucks	Comment noted.
565	11/14/2020	MetroQuest	4: Interactive Map	Safety	Dangerous intersection	Comment noted.
566	11/14/2020	MetroQuest	4: Interactive Map	General Comment	During Heavy Traffic It Is Virtually Impossible To Gain Access To US 96 Unless You Make A Right Turn And Race A Vehicle To Cut In Front Of.	Comment noted.
567	11/15/2020	MetroQuest	4: Interactive Map	General Comment	I believe it would help	Comment noted.
568	11/15/2020	MetroQuest	4: Interactive Map	Congestion	Slow traffic	Comment noted.
569	11/15/2020	MetroQuest	4: Interactive Map	Congestion	Slow traffic	Comment noted.
570	11/15/2020	MetroQuest	4: Interactive Map	Safety	To help prevent wrecks	Comment noted.
571	11/15/2020	MetroQuest	4: Interactive Map	Congestion	Slow traffic	Comment noted.
572	11/15/2020	MetroQuest	4: Interactive Map	Safety	To many wrecks	Comment noted.

573	11/16/2020	MetroQuest	4: Interactive Map	Congestion	Congestion during evacuation makes leaving the area miserable	The purpose of the project is to provide a more reliable transportation and hurricane evacuation route, to enhance connectivity and mobility, and to enhance safety. US 96 within the Beaumont District is a critical part of the strategic freight network and provides hurricane evacuation capacity for Southeast Texas and neighboring areas.
574	11/16/2020	MetroQuest	4: Interactive Map	Safety/Congestion	People need a safe way to evacuate in a timely fashion	Comment noted.
575	11/16/2020	MetroQuest	4: Interactive Map	Right of Way	Tight ROW and affect on small businesses	Comment noted.
576	11/16/2020	MetroQuest	4: Interactive Map	Right of Way	Would like to see minimal impact to residents.	Comment noted.
577	11/16/2020	MetroQuest	4: Interactive Map	Safety	Over hill, blind spot	Comment noted.
578	11/16/2020	MetroQuest	4: Interactive Map	Safety	Recurring accidents FM 1007/US 96	Comment noted.
579	11/16/2020	MetroQuest	4: Interactive Map	Safety	Safer routing for families	Comment noted.
580	11/16/2020	MetroQuest	4: Interactive Map	Safety	To many accidents	Comment noted.
581	11/16/2020	MetroQuest	4: Interactive Map	Congestion	This will hopefully alleviate the backing up of traffic	Comment noted.
582	11/16/2020	MetroQuest	4: Interactive Map	General Comment	Traffic bottlenecks at Mill Creek turnoff there so should be addressed	Comment noted.
583	11/17/2020	MetroQuest	4: Interactive Map	General Comment	1007 Intersection	Comment noted.
584	11/17/2020	MetroQuest	4: Interactive Map	General Comment	Fast traffic, turning cars, business traffic venturing onto road with fast traffic	Comment noted.
585	11/17/2020	MetroQuest	4: Interactive Map	General Comment	1007 intersection	Comment noted.
586	11/17/2020	MetroQuest	4: Interactive Map	General Comment	fast traffic along business areas	Comment noted.
587	11/18/2020	MetroQuest	4: Interactive Map	Outside Limits	Added lanes going North will help during Hurricane evacuation. Hopefully 96 will be widened all the way to San Augustine/Center.	This comment is for an area outside of the proposed project limits. Further information on other projects in the TxDOT Beaumont District, please visit: <a href="https://www.txdot.gov/inside-txdot/projects/project-tracker.html">https://www.txdot.gov/inside-txdot/projects/project-tracker.html</a>
588	11/18/2020	MetroQuest	4: Interactive Map	General Comment	Curves and hills	Comment noted.
589	11/18/2020	MetroQuest	4: Interactive Map	Traffic	Intersection at 96 and 219 would need a traffic light or 4 way stop.	All design concepts under evaluation are preliminary and subject to change. Crossover locations, turning lanes, median details, and signalization details would continue to be analyzed as project design moves forward.
590	11/18/2020	MetroQuest	4: Interactive Map	Safety	Safety concerns at this intersection because of young, inexperienced drivers travelling to and from school.	Comment noted.
591	11/18/2020	MetroQuest	4: Interactive Map	Safety/Congestion	Vehicles are passing in double yellow strip areas.	Comment noted.
592	11/18/2020	MetroQuest	4: Interactive Map	Congestion	Limited areas for passing.	Comment noted.
593	11/18/2020	MetroQuest	4: Interactive Map	Congestion	Limited areas for passing.	Comment noted.
594	11/18/2020	MetroQuest	4: Interactive Map	General Comment	Limited sreas	Comment noted.
595	11/22/2020	MetroQuest	4: Interactive Map	Safety/Congestion	Please widen this road, this is a bottleneck in a hurrican evacuation.	Comment noted.
596	11/22/2020	MetroQuest	4: Interactive Map	General Comment	If you widen the east side it will impact existing traffic the least.	Comment noted.
597	11/22/2020	MetroQuest	4: Interactive Map	General Comment	Due to log truck traffic, it is almost impossible to pass on a 2 lane road. Please widen the highway.	Comment noted.
598	11/23/2020	MetroQuest	4: Interactive Map	Congestion	Traffic jams here.	Comment noted.
599	11/23/2020	MetroQuest	4: Interactive Map	Congestion	Trying to pass slow moving vehicles	Comment noted.
600	11/23/2020	MetroQuest	4: Interactive Map	Congestion	So many super slow moving vehicles.	Comment noted.
601	11/24/2020	MetroQuest	4: Interactive Map	General Comment	Traffic throttlng	Comment noted.
602	11/24/2020	MetroQuest	4: Interactive Map	General Comment	hill	Comment noted.
603	11/24/2020	MetroQuest	4: Interactive Map	General Comment	Logging truck traffic	Comment noted.
604	11/24/2020	MetroQuest	4: Interactive Map	General Comment	Intersection	Comment noted.
605	11/24/2020	MetroQuest	4: Interactive Map	General Comment	Intersection problems	Comment noted.
606	11/24/2020	MetroQuest	4: Interactive Map	General Comment	Narrow	Comment noted.
607	11/24/2020	MetroQuest	4: Interactive Map	General Comment	Turn	Comment noted.
608	11/25/2020	MetroQuest	4: Interactive Map	Environment	Save the wetlands areas!	In accordance with the National Environmental Policy Act (NEPA), during development of the project design, TxDOT makes every effort to avoid and minimize potential impacts to environmental resources. Where impacts are unavoidable, TxDOT proposes appropriate mitigation for the expected impacts.

609	11/25/2020	MetroQuest	4: Interactive Map	Environment	Save the wetlands areas!	In accordance with the National Environmental Policy Act (NEPA), during development of the project design, TxDOT makes every effort to avoid and minimize potential impacts to environmental resources. Where impacts are unavoidable, TxDOT proposes appropriate mitigation for the expected impacts.
610	11/25/2020	MetroQuest	4: Interactive Map	General Comment	The highway should not have an impact on the Trail Between the Lakes west end.	Comment noted.
611	11/25/2020	MetroQuest	4: Interactive Map	General Comment	The highway should not interfere with the Trail Between the Lakes western terminus.	Comment noted.
612	11/25/2020	MetroQuest	4: Interactive Map	General Comment	bottleneck	Comment noted.
613	11/25/2020	MetroQuest	4: Interactive Map	General Comment	Faster	Comment noted.
614	11/25/2020	MetroQuest	4: Interactive Map	General Comment	Safer	Comment noted.
615	11/25/2020	MetroQuest	4: Interactive Map	General Comment	Make crossing well marked	Comment noted.
616	11/25/2020	MetroQuest	4: Interactive Map	General Comment	Make sure crossing is well marked.	Comment noted.
617	11/25/2020	MetroQuest	4: Interactive Map	General Comment	not enough passing lanes	Comment noted.
618	11/25/2020	MetroQuest	4: Interactive Map	Safety	Faster safer traffic	Comment noted.
619	11/25/2020	MetroQuest	4: Interactive Map	Safety	too many wrecks	Comment noted.
620	11/26/2020	MetroQuest	4: Interactive Map	Safety	When I travel to the lake, I'm always worried that I'll meet someone head on.	Comment noted.
621	11/26/2020	MetroQuest	4: Interactive Map	Safety	A lot of traffic in this area. Most do not stop at the stop sign. There is a hill that you have to watch on coming traffic. Can't see them until they are on you.	Comment noted.
622	11/27/2020	MetroQuest	4: Interactive Map	Environment	boundary issues with USFS	Comment noted.
623	11/27/2020	MetroQuest	4: Interactive Map	Environment	stream crossing	Comment noted.
624	11/27/2020	MetroQuest	4: Interactive Map	Environment	stream crossing	Comment noted.
625	11/28/2020	MetroQuest	4: Interactive Map	Maintenance	Needs road repairs	Comment noted.
626	11/28/2020	MetroQuest	4: Interactive Map	Maintenance	Road not maintained	Comment noted.
627	11/28/2020	MetroQuest	4: Interactive Map	General Comment	One lane no workers	Comment noted.
628	12/1/2020	MetroQuest	4: Interactive Map	Drainage	Make sure road is built above the base flood elevation.	Preliminary drainage characteristics of the area have been evaluated, and detailed drainage analysis would continue into the final design phase of the project.
629	12/2/2020	MetroQuest	4: Interactive Map	Safety/Congestion	Definitely needs to be wider during evacuation	Comment noted.
630	12/2/2020	MetroQuest	4: Interactive Map	Safety/Congestion	Being two lane is unsafe people always trying to pass makes it worse.	Comment noted.
631	12/2/2020	MetroQuest	4: Interactive Map	Congestion	traffic is heavy making this wider will make the traffic flow better.	The purpose of the project is to provide a more reliable transportation and hurricane evacuation route, to enhance connectivity and mobility, and to enhance safety. US 96 within the Beaumont District is a critical part of the strategic freight network and provides hurricane evacuation capacity for Southeast Texas and neighboring areas.
632	12/6/2020	MetroQuest	4: Interactive Map	Outside Limits	would like to see this project go passed Pindland.	Comment noted.
633	12/6/2020	MetroQuest	4: Interactive Map	Safety	can not see traffic turning onto 96	Comment noted.
634	12/9/2020	MetroQuest	4: Interactive Map	Environment	Since the Hwy 96 is close to the lake need to ensure the environmental elements are protected	In accordance with the National Environmental Policy Act (NEPA), during development of the project design, TxDOT makes every effort to avoid and minimize potential impacts to environmental resources. Where impacts are unavoidable, TxDOT proposes appropriate mitigation for the expected impacts.
635	12/9/2020	MetroQuest	4: Interactive Map	Drainage	This poor store does get help from the city in fixing the drainage system even though taxes are paid. Water floods everytime it rains. They have been servicing the community for 30 plus years. The road needs to be widen and drainage needs to be fixed	Preliminary drainage characteristics of the area have been evaluated, and detailed drainage analysis would continue into the final design phase of the project.
636	12/9/2020	MetroQuest	4: Interactive Map	Safety/Congestion	bottleneck of traffic during evacuation.	Comment noted.
637	12/9/2020	MetroQuest	4: Interactive Map	General Comment	Bottleneck when traffic merges.	Comment noted.
638	12/9/2020	MetroQuest	4: Interactive Map	General Comment	have evacuated many times. this was a horriblebottleneck	Comment noted.
639	12/9/2020	MetroQuest	4: Interactive Map	Safety/Congestion	Need the road wider here. Historically this area gets backed up due to the gas stations on both sides servicing evacuees. It will help with safety	Comment noted.
640	12/9/2020	MetroQuest	4: Interactive Map	General Comment	This will improve the flow of traffic with the improvements.	Comment noted.
641	12/9/2020	MetroQuest	4: Interactive Map	General Comment	This would be great for hurricane season it needs to be widened	Comment noted.
642	12/9/2020	MetroQuest	4: Interactive Map	General Comment	We can't control the weather but we can help other avoid its devastating effects.	Comment noted.

643	12/9/2020	MetroQuest	4: Interactive Map	Safety	Dangerous intersection. From 1007 - Hard to see oncoming traffic from both the South and North bound lanes of HWY 96.	Comment noted.
644	12/9/2020	MetroQuest	4: Interactive Map	Safety/Congestion	even without hurricane traffic the highway is dangerous with people trying to get around slower traffic	Comment noted.
645	12/9/2020	MetroQuest	4: Interactive Map	Safety	Hard to enter safely, visibility issues with hills.	Comment noted.
646	12/9/2020	MetroQuest	4: Interactive Map	Safety	have had numerous MVA's with fatalities along this route would like to make it safer	Comment noted.
647	12/9/2020	MetroQuest	4: Interactive Map	Safety	lot of deaths and injuries at this intersection.	Comment noted.
648	12/9/2020	MetroQuest	4: Interactive Map	Safety	Safety must always be our primary goal!	Comment noted.
649	12/9/2020	MetroQuest	4: Interactive Map	Safety	There is safety concerns without the improvement. We need steady flow of traffic to reduce congestion and for connectivity.	The purpose of the project is to provide a more reliable transportation and hurricane evacuation route, to enhance connectivity and mobility, and to enhance safety. US 96 within the Beaumont District is a critical part of the strategic freight network and provides hurricane evacuation capacity for Southeast Texas and neighboring areas.
650	12/9/2020	MetroQuest	4: Interactive Map	Safety	Too Many wrecks at this intersection	Comment noted.
651	12/9/2020	MetroQuest	4: Interactive Map	Safety	A lot of accidents happen here	Comment noted.
652	12/9/2020	MetroQuest	4: Interactive Map	Congestion	lots of truck traffic and slows traffic down when they climb hills.	Comment noted.
653	12/9/2020	MetroQuest	4: Interactive Map	General Comment	Narrowing of roadway.	Comment noted.
654	12/9/2020	MetroQuest	4: Interactive Map	General Comment	Need free flowing traffic and not bottlenecks	Comment noted.
655	12/9/2020	MetroQuest	4: Interactive Map	General Comment	this has needed to be widened for years especially because of lake traffic	Comment noted.
656	12/9/2020	MetroQuest	4: Interactive Map	General Comment	Traffic issues - Entering and exiting Loop 149 before and after school.	Comment noted.
657	12/9/2020	MetroQuest	4: Interactive Map	General Comment	We should always build the most capacity that we can afford!	Comment noted.
658	12/11/2020	MetroQuest	4: Interactive Map	General Comment	Highway intersection	Comment noted.
659	10/7/2020	MetroQuest	5: Wrap Up	General Comment	n/a	Comment noted.
660	10/16/2020	MetroQuest	5: Wrap Up	General Comment	Thanks for gathering feedback	Comment noted.
661	10/19/2020	MetroQuest	5: Wrap Up	General Comment	Please improve	Comment noted.
662	10/19/2020	MetroQuest	5: Wrap Up	Safety	Please make this a safer route for daily residents as well as employees of Georgia Pacific. It is very busy with log trucks which makes it unsafe.	Comment noted.
663	10/19/2020	MetroQuest	5: Wrap Up	General Comment	This is a long needed improvement. Thanks for your consideration	Comment noted.
664	10/19/2020	MetroQuest	5: Wrap Up	Safety	For some reason the top half of this survey was cut off. Any way to fix that? Not able to make comments on the safety issues at 96 and 255.	Your mention of safety concerns at US 96 and R255 are noted. Safety analysis of the entire stretch of US 96 within the proposed project limits will continue throughout the design of the project.
665	10/19/2020	MetroQuest	5: Wrap Up	Safety	This project is needed to provide a safer commute for people traveling this roadway.	Comment noted.
666	10/19/2020	MetroQuest	5: Wrap Up	Traffic	Please expand the highways and add lights along the roads	All design concepts under evaluation are preliminary and subject to change. Crossover locations, turning lanes, median details, and signalization details would continue to be analyzed as project design moves forward.
667	10/19/2020	MetroQuest	5: Wrap Up	Safety	this project is well past due. i'm in law enforcement and deal with the evacuation from south	Comment noted.
668	10/19/2020	MetroQuest	5: Wrap Up	General Comment	Thanks for Asking my opinion !	Comment noted.
669	10/19/2020	MetroQuest	5: Wrap Up	General Comment	TxDOT's Beaumont District is doing a great job and we are all extremely pleased that TxDOT will be moving forward toward the completion of 4-lane divided roadway on U.S. 96 in Jasper County.	Comment noted.
670	10/19/2020	MetroQuest	5: Wrap Up	General Comment	This update and expansion of HWY 96 is needed.	Comment noted.
671	10/19/2020	MetroQuest	5: Wrap Up	General Comment	It is desperately needed for safety and easy of traffic.	Comment noted.
672	10/19/2020	MetroQuest	5: Wrap Up	General Comment	Please go with option A I live at the intersection of hwy 96 and 1007. The other two options would take most of my property and leave me on the side of the road	Comment noted.
673	10/19/2020	MetroQuest	5: Wrap Up	Traffic	I hope traffic signals are not needed. They would offset the timeliness of current travel times.	All design concepts under evaluation are preliminary and subject to change. Crossover locations, turning lanes, median details, and signalization details would continue to be analyzed as project design moves forward.
674	10/19/2020	MetroQuest	5: Wrap Up	General Comment	Just one more step toward having a 4 lane highway up to Highway 59	Comment noted.
675	10/19/2020	MetroQuest	5: Wrap Up	General Comment	The road needs to be done all the way to Pineland, Texas	Comment noted.
676	10/19/2020	MetroQuest	5: Wrap Up	General Comment	This section of 96 has needed to be turned into a four lane for decades. It's about time it was done.	Comment noted.
677	10/19/2020	MetroQuest	5: Wrap Up	General Comment	Widening the highway is very much needed.	Comment noted.
678	10/19/2020	MetroQuest	5: Wrap Up	Right of Way	I wouldn't want to lose any commercial property or residential properties would prefer it stayed the way it is	Comment noted.

679	10/19/2020	MetroQuest	5: Wrap Up	Right of Way	We own property right before 96 & 1007 our main question is all three alternatives show our property within the Widening of 96 ( from little to almost all of property ) how or when do we find out how much or if all of it will be taken ? Thanks Kandace West	If TxDOT determines that a certain parcel of property is necessary for construction of the proposed project, the property owner would be contacted. For more information about the right of way acquisition process and your rights as a property owner, please visit: <a href="https://www.txdot.gov/inside-txdot/division/right-of-way.html">https://www.txdot.gov/inside-txdot/division/right-of-way.html</a> For the latest project information, including drawings of the alternatives being considered, please visit the project page at: <a href="https://www.txdot.gov/inside-txdot/projects/studies/beatmont/us-96-from-re-255-north-to-loop-149.html">https://www.txdot.gov/inside-txdot/projects/studies/beatmont/us-96-from-re-255-north-to-loop-149.html</a>
680	10/20/2020	MetroQuest	5: Wrap Up	General Comment	Needs to be 4 lanes all the way to Center, Tx. from 255.	Comment noted.
681	10/20/2020	MetroQuest	5: Wrap Up	Safety	I have been driving from Jasper to Pineland 4 to 5 days a week for 31 yrs. The recreational traffic and the commercial ( log trucks ) have increased tremendously since 1988. The condition of this section of road has been reconstructed several times and the most recent reconstruction created very dangerous conditions just south of the car wash entrance. At one point, the road was nearly impassable. I would really like to see this project continue even NORTH of Pineland.	Work north of LP 149 in Sabine County is not proposed as part of this project.
682	10/20/2020	MetroQuest	5: Wrap Up	General Comment	US 96 needs to be four lane all the way to Center, TX.	Comment noted.
683	10/20/2020	MetroQuest	5: Wrap Up	General Comment	I just hope there will be easy access to and from the highway to go home	Comment noted.
684	10/20/2020	MetroQuest	5: Wrap Up	General Comment	Many 18 wheeler trucks use this route especially logging trucks daily. The construction will cause a delay no matter which option is chosen.	While temporary disruption of traffic for residents, businesses and travelers may occur, TxDOT would make every effort to maintain access to residences and businesses throughout construction.
685	10/20/2020	MetroQuest	5: Wrap Up	Safety	To many accidents at 1007 @ 96 ! Address this issue please	Comment noted.
686	10/20/2020	MetroQuest	5: Wrap Up	Safety/Congestion	This section of Hiway 96 is dangerous as it presently exists, the amount of traffic on normal weekdays is heavy and much of it is 18 wheelers,, but on weekends, holidays, and hurricane evacuation it is seriously overcrowded	The proposed project would widen the roadway from two to four lanes with a grassy median. This would enhance safety and capacity for everyday operations as well as emergency evacuations.
687	10/20/2020	MetroQuest	5: Wrap Up	Safety	Sam Rayburn tournament and recreational traffic would be able to travel more safely as this would cause the flow of traffic to transition more safely to and from the lake area....	Comment noted.
688	10/20/2020	MetroQuest	5: Wrap Up	General Comment	Thank you for asking for input from the local citizens.	Comment noted.
689	10/20/2020	MetroQuest	5: Wrap Up	General Comment	You have the east and west sides wrong. The east side going north has more businesses and residents than the west side. Look again. This info you put out is just wrong.	Comment noted.
690	10/20/2020	MetroQuest	5: Wrap Up	General Comment	Dont donit	Comment noted.
691	10/20/2020	MetroQuest	5: Wrap Up	Right of Way	Not happy about it .I have work to hard to pay for my place by myself and to old to have to relocate. I hope you will consider .	If TxDOT determines that a certain parcel of property is necessary for construction of the proposed project, the property owner would be contacted. For more information about the right of way acquisition process and your rights as a property owner, please visit: <a href="https://www.txdot.gov/inside-txdot/division/right-of-way.html">https://www.txdot.gov/inside-txdot/division/right-of-way.html</a>
692	10/20/2020	MetroQuest	5: Wrap Up	Safety/Congestion	Thanks for looking in to this, if we can save lives at FM 1007 and Hwy 96 and help on truck traffic and evacuations, it will be good.	Comment noted.
693	10/20/2020	MetroQuest	5: Wrap Up	Safety/Congestion	I would like to see all of US 96 finished out to 4 lane as designed. As Judge from neighboring county this is important because we have now had two hurricanes this year that 96 was used heavily to evacuate residents from La. Also with the ports traffic 96 is a straight route to Arkansas and I 20.	The proposed project would widen the roadway from two to four lanes with a grassy median. This would enhance safety and capacity for everyday operations as well as emergency evacuations.
694	10/20/2020	MetroQuest	5: Wrap Up	General Comment	Please, please fix it on both sides.	Comment noted.
695	10/20/2020	MetroQuest	5: Wrap Up	Safety/Congestion	I feel that this part of 96 needs to be widen due to the heavy traffic and hopefully it will be more safe. People pass other cars by using the turning lane which is very dangerous.	Comment noted.
696	10/20/2020	MetroQuest	5: Wrap Up	Safety	Needs to be completed fast and in a hurray because even school traffic is crazy and the teenagers speed through this section and we cannot see their vehicles with all the hills we have around until they come over the top and sometimes that is too late.	Comment noted.
697	10/20/2020	MetroQuest	5: Wrap Up	General Comment	I live in Jasper which is south of the proposed construction area. I travel Hwy 96 to many of my destinations when leaving Jasper and when evacuating from Hurricanes. Improved roadways in our area are always welcome.	Comment noted.
698	10/20/2020	MetroQuest	5: Wrap Up	Right of Way	Not in favor of a divided highway due to loss of businesses and homes, maybe another plan should be visited.	Comment noted.
699	10/20/2020	MetroQuest	5: Wrap Up	Safety	I tried to add comment on safety issue for the fm 1007 intersection. Very busy intersection. Hard to cross the road with 2 lanes and enter highway. It sits between 2 hills that limit visibility. Also, concerned about the post office that is in the path.	Comment noted.
700	10/20/2020	MetroQuest	5: Wrap Up	General Comment	I would love to see 4 lanes from hwy 255 north to Center , tx.	Comment noted.
701	10/20/2020	MetroQuest	5: Wrap Up	Maintenance	Need to fix and maintain roads in communities rather than building a bigger highway for more traffic to tear up our roads that already cannot keep maintained. We have a road that has been overgrown for years and no one will maintain it you have to have 4 wheel drive truck just to access your property... so funds should be spent on fixing what we have now not making things worse	TxDOT would continue to maintain areas not directly affected during construction.

702	10/20/2020	MetroQuest	5: Wrap Up	General Comment	I'm a owner operator who sees the need for highway 96 to be a complete 4 lane road from Beaumont Tx to center Tx with appropriate overpasses or bypasses in key areas to promote traffic flow but also not hurt local economy.	TxDOT aims to develop and operate an integrated transportation system that provides reliable and accessible mobility and enables economic growth.
703	10/20/2020	MetroQuest	5: Wrap Up	General Comment	Stop wasting money on roads that are time and actually drive the roads then you will find the places that need to be worked on. If you would like I can create a list for you to begin with as my work in an ambulance has me travel all over east Texas actually using the highways not sitting behind a desk if you would like to call me my cell phone number is	Comment noted.
704	10/20/2020	MetroQuest	5: Wrap Up	Right of Way	What ever you decide, please provide a safe way for us to throw off the highway to our homes and or business areas.	Comment noted.
705	10/21/2020	MetroQuest	5: Wrap Up	Right of Way	I think if this occurs, a least amount of businesses and residences need to be disrupted. If you decide to proceed with the project, then pay the property owners what is rightfully theirs and at a fair value, not some small amount the state thinks is fair.	If TxDOT determines that a certain parcel of property is necessary for construction of the proposed project, the property owner would be contacted. For more information about the right of way acquisition process and your rights as a property owner, please visit: <a href="https://www.txdot.gov/inside-txdot/division/right-of-way.html">https://www.txdot.gov/inside-txdot/division/right-of-way.html</a>
706	10/21/2020	MetroQuest	5: Wrap Up	General Comment	I'm not in favor of a divided highway in this segment. We just went through Hurricane Laura this last Summer with NO PROBLEMS with Hurricane Evacuation!!! No traffic troubles at all! Please do not do this project. Just improve what's there. God Bless!	Comment noted.
707	10/21/2020	MetroQuest	5: Wrap Up	Environment	Interested in preservation of historical and archaeological resources along R.O.W.	In accordance with the National Environmental Policy Act (NEPA), during development of the project design, TxDOT makes every effort to avoid and minimize potential impacts to environmental resources. Where impacts are unavoidable, TxDOT proposes appropriate mitigation for the expected impacts.
708	10/21/2020	MetroQuest	5: Wrap Up	Safety/Traffic	Please put in a turning lane for there are a lot of turn off for this route. Also please cut down the hill at 1007 and put a stop light in. The hill at 219 needs to be cut down and add turning lane. Cr226 needs a turning lane. And do away with drop off shoulders there unsafe and hold water. Protect the 2 natural creeks that run through this route.	Safety analyses will continue throughout design and any recommended safety enhancements as a result of those analyses would be included in the project.
709	10/21/2020	MetroQuest	5: Wrap Up	Safety	MY NAME IS BRETT HOLLOWAY ,FIRE CHIEF,LAKE RAYBURN,WE HAVE MANY ACCIDENTS AT 96 & 1007,THER IS NO LINE OF SIGHT NORTH OR SOUTH,THE HILLS ARE THE MAIN PROBLEM.I KNOW IT WOULD BE A BIG JOB TO FIX ,BUT IF YOU ARE GOING TO BUILD A DIVIDED HIGHWAY THAT WOULD BE THE TIME TO DO IT. THANK YOU MY	Comment noted.
710	10/21/2020	MetroQuest	5: Wrap Up	Outside Limits	Widen Rayburn Parkway and Hwy 63 W to alleviate the recreational traffic. I plan on moving due to the major increase recreational visitors to our area	This comment is for an area outside of the proposed project limits. Further information on other projects in the TxDOT Beaumont District, please visit: <a href="https://www.txdot.gov/inside-txdot/projects/project-tracker.html">https://www.txdot.gov/inside-txdot/projects/project-tracker.html</a>
711	10/22/2020	MetroQuest	5: Wrap Up	Safety	This entire section of roadway from Pineland to R255 is a death trap due to log trucks and rutted diving lanes. Widening road will greatly improved driver's safety.	Comment noted.
712	10/22/2020	MetroQuest	5: Wrap Up	General Comment	It really needs to be done.	Comment noted.
713	10/22/2020	MetroQuest	5: Wrap Up	General Comment	The best for all thank you.	Comment noted.
714	10/22/2020	MetroQuest	5: Wrap Up	General Comment	I currently reside in Orange, Texas but own property off of Loop 149. I have traveled this highway all my life. The areas I marked or commented on could use some more practical engineering to accommodate today's vehicles and peoples driving habits.	Comment noted.
715	10/23/2020	MetroQuest	5: Wrap Up	General Comment	PLEASE DO SOMETHING!!! I have been here all my life. Heard of this expansion at least over 30 years!!!	Comment noted.
716	10/23/2020	MetroQuest	5: Wrap Up	Outside Limits	I commute back and forth every day from Sabine County to Jasper County and the traffic can be horrible on the 2 lanes from Pineland to 255. Big trucks and people pulling trailers can cause long lines for miles. Lots of people go to the lakes on the weekends and holidays and that causes problems coming on and getting off 96 to stores and side roads.	Comment noted.
717	10/23/2020	MetroQuest	5: Wrap Up	General Comment	i think this project is much needed and if done right could improve safety in the area	Comment noted.
718	10/23/2020	MetroQuest	5: Wrap Up	General Comment	Don't do it.	Comment noted.
719	10/23/2020	MetroQuest	5: Wrap Up	General Comment	I do not want it	Comment noted.
720	10/23/2020	MetroQuest	5: Wrap Up	Safety	A good friend had a very bad accident in the area, where the four lanes end. She was going South.	Comment noted.
721	10/23/2020	MetroQuest	5: Wrap Up	General Comment	Hope it gets built	Comment noted.
722	10/23/2020	MetroQuest	5: Wrap Up	General Comment	I don't live on this segment of 96, but I care about what happens in east Texas....and what happens to it. For what that matters. The handwriting on the wall is there, in your questions....why am I interested in US 96 "improvements "....	Comment noted.
723	10/23/2020	MetroQuest	5: Wrap Up	General Comment	need to do it to the rest of 96	Comment noted.
724	10/23/2020	MetroQuest	5: Wrap Up	Outside Limits	Again, this will provide greatly for the various community members of North Jasper and Sabine Counties. However, with the expansive project, I wish we would turn a blind eye to the highly lingering dangers of 96N of this project. We really need your help!	Comment noted.
725	10/23/2020	MetroQuest	5: Wrap Up	General Comment	Just need to improve road surface from brook land loop to pineland	Comment noted.

726	10/24/2020	MetroQuest	5: Wrap Up	Safety	We live East of 96 off FM 1007. We travel to Jasper almost daily and it is already hard to safely get out onto 96 going South.	Comment noted.
727	10/24/2020	MetroQuest	5: Wrap Up	Environment	Address is 170 County Road 228. I received a letter from TxDot but didn't fill out because I would rather answer questions this way. Yes you can check the utilities on my property. There are Pileated woodpeckers on our property.	Comment noted.
728	10/24/2020	MetroQuest	5: Wrap Up	Safety/Congestion	During Hurricane evacuations Hwy 96 needs to be consistently wider to prevent bottlenecks as residents from the coast travel north to safety.	Comment noted.
729	10/24/2020	MetroQuest	5: Wrap Up	Right of Way	I've traveled this road for 65 years. Worked at TXDOT for 20+ years in ROW. I understand the necessity of this project. Although buying from both sides may be more expensive, I believe it impacts the least amount of residents and businesses. Especially taking into consideration relocation benefits for displaced property owners.	Comment noted.
730	10/24/2020	MetroQuest	5: Wrap Up	Right of Way	If you take people's houses at least have the decency to give them an amount that a family can rebuild. I've heard that you don't give the true value of a family's house.	If TxDOT determines that a certain parcel of property is necessary for construction of the proposed project, the property owner would be contacted. For more information about the right of way acquisition process and your rights as a property owner, please visit: <a href="https://www.txdot.gov/inside-txdot/division/right-of-way.html">https://www.txdot.gov/inside-txdot/division/right-of-way.html</a>
731	10/24/2020	MetroQuest	5: Wrap Up	General Comment	Been talked about for years. Waaay overdue.	Comment noted.
732	10/24/2020	MetroQuest	5: Wrap Up	General Comment	Does not need to be widened. There is no need. Traffic is not back to back and the thought is ridiculous. Use money on something else. Keep country, country. People come here to get away from it all. Quit bringing everything here.	Comment noted.
733	10/25/2020	MetroQuest	5: Wrap Up	Traffic	Again please install either a traffic light or 4 way stop signs at the intersection of HWY 96 and Recreational Road 255.	All design concepts under evaluation are preliminary and subject to change. Crossover locations, turning lanes, median details, and signalization details would continue to be analyzed as project design moves forward.
734	10/25/2020	MetroQuest	5: Wrap Up	Traffic	Need to put traffic light at 1007	All design concepts under evaluation are preliminary and subject to change. Crossover locations, turning lanes, median details, and signalization details would continue to be analyzed as project design moves forward.
735	11/3/2020	MetroQuest	5: Wrap Up	Right of Way	I just want how many of these business got shutdown to build this Hwy?	The amount of businesses or residences that would be affected by the proposed project has not been determined.
736	11/6/2020	MetroQuest	5: Wrap Up	Safety	This expansion is past due for many years. To many wrecks and fatalities in the Brookeland area	Comment noted.
737	11/7/2020	MetroQuest	5: Wrap Up	Safety	this is needed during hurricane season and daily commutes.	Comment noted.
738	11/7/2020	MetroQuest	5: Wrap Up	Right of Way	We are afraid this will change our lives because TxDot will take most of of our property. We are retired and on a fixed income.	If TxDOT determines that a certain parcel of property is necessary for construction of the proposed project, the property owner would be contacted. For more information about the right of way acquisition process and your rights as a property owner, please visit: <a href="https://www.txdot.gov/inside-txdot/division/right-of-way.html">https://www.txdot.gov/inside-txdot/division/right-of-way.html</a>
739	11/10/2020	MetroQuest	5: Wrap Up	Safety	Driving from Brookeland to Jasper, I cant wait to get to 255 two lane, going to Jasper. You really have to watch out for the other guy coming into your lane coming over the hills and curves. Getting off the highway in Brookeland, the shoulders have the stayawake ripples that are very rough and trying to ease over and not getting hit from behind because the turn in like at the Post Office has plenty of pot holes such as many other turn off from 96. Bad situation in that area.	Comment noted.
740	11/14/2020	MetroQuest	5: Wrap Up	Outside Limits	I Frequently Travel From My Home In The Brookeland Area To Nederland And Notice How Over The Years Lumberton Has Become A Significant Strangle Point On Both US 96 & US 69 Which Is Extremely Enhanced During An Evacuation. You Need A Loop Around Lumberton.	This comment is for an area outside of the proposed project limits. Further information on other projects in the TxDOT Beaumont District, please visit: <a href="https://www.txdot.gov/inside-txdot/projects/project-tracker.html">https://www.txdot.gov/inside-txdot/projects/project-tracker.html</a>
741	11/15/2020	MetroQuest	5: Wrap Up	Safety	I would like people to evacuate in hurricane season more easily I would like no more wrecks at the intersection of 107 and 96 love ones have died there	Comment noted.
742	11/15/2020	MetroQuest	5: Wrap Up	Environment	While transportation/ evacuation needs are evident, please keep in mind that we need to protect the environment as much as possible.	In accordance with the National Environmental Policy Act (NEPA), during development of the project design, TxDOT makes every effort to avoid and minimize potential impacts to environmental resources. Where impacts are unavoidable, TxDOT proposes appropriate mitigation for the expected impacts.
743	11/16/2020	MetroQuest	5: Wrap Up	General Comment	Would like to know as soon as possible, will there be hiring for work out of our community, and when is the project planned to start	Information about the project including summaries of pubic involvement and project drawings will be posted on the TxDOT project page at: <a href="https://www.txdot.gov/inside-txdot/projects/studies/beatmont/us-96-from-re-255-north-to-loop-149.html">https://www.txdot.gov/inside-txdot/projects/studies/beatmont/us-96-from-re-255-north-to-loop-149.html</a>

744	11/17/2020	MetroQuest	5: Wrap Up	Outside Limits	I would like to see lower speed limits on 96 north of overpass in Evadale. 70 mph is too fast for at least 2 miles approaching overpass from Buna near Evadale. I live here and use the road daily.	This comment is for an area outside of the proposed project limits. Further information on other projects in the TxDOT Beaumont District, please visit: <a href="https://www.txdot.gov/inside-txdot/projects/project-tracker.html">https://www.txdot.gov/inside-txdot/projects/project-tracker.html</a>
745	11/18/2020	MetroQuest	5: Wrap Up	Safety	This project is much needed for the safety of the traveling public. There isn't much opportunity to pass South of Browndell. Had cars passing in no passing zone doing 70 mph at night this past weekend. Also hope project will help with turning left onto Loop 149 when traveling North. The turn is dangerous due to the curve and the hill. Although it may require more utility adjustments, I believe option C impacts the least amount of homes/businesses and therefore less relocation involved.	The purpose of the project is to provide a more reliable transportation and hurricane evacuation route, to enhance connectivity and mobility, and to enhance safety.
746	11/25/2020	MetroQuest	5: Wrap Up	General Comment	Hurry Good survey guys	Comment noted.
747	11/25/2020	MetroQuest	5: Wrap Up	General Comment	I'm an employee of Hearst which owns Beaumont Enterprise but I still discovered this survey opportunity through y'all's ad on BeaumontEnterprise.com!	Comment noted.
748	11/26/2020	MetroQuest	5: Wrap Up	General Comment	I commend you on getting input from people that live in the area.	Comment noted.
749	12/5/2020	MetroQuest	5: Wrap Up	General Comment	Leave us alone, i bought property for peaceful living, not more traffic, i can get that in Houston	Comment noted.
750	12/6/2020	MetroQuest	5: Wrap Up	General Comment	please keep excess open.	Comment noted.
751	12/9/2020	MetroQuest	5: Wrap Up	General Comment	I travel extensively around the country and Texas has the greatest highways and we should always try to improve what we have and improve safety and connectivity. Keep up the good work!!	Comment noted.
752	12/9/2020	MetroQuest	5: Wrap Up	General Comment	Can't happen soon enough!	Comment noted.
753	12/9/2020	MetroQuest	5: Wrap Up	Economy	Southeast Texas needs connectivity to the bigger cities (markets) for general commerce. Smaller cities and counties get left out of the big picture when it comes to growing our economies. The Houston and Dallas market always come first. Southeast Texas is a growing market and if we can improve our infrastructure we can compete locally, nationally and on a global scale.	TxDOT aims to develop and operate an integrated transportation system that provides reliable and accessible mobility and enables economic growth.
754	12/9/2020	MetroQuest	5: Wrap Up	General Comment	Seek to improve freight mobility and safety	Comment noted.
755	12/9/2020	MetroQuest	5: Wrap Up	General Comment	like this survey. which these were done moreoften.	Comment noted.
756	12/9/2020	MetroQuest	5: Wrap Up	General Comment	Happy to find out this project is moving forward. As a resident of the City of Jasper and Jasper County, I believe this is a positive step to improve traffic flow through our area.	Comment noted.