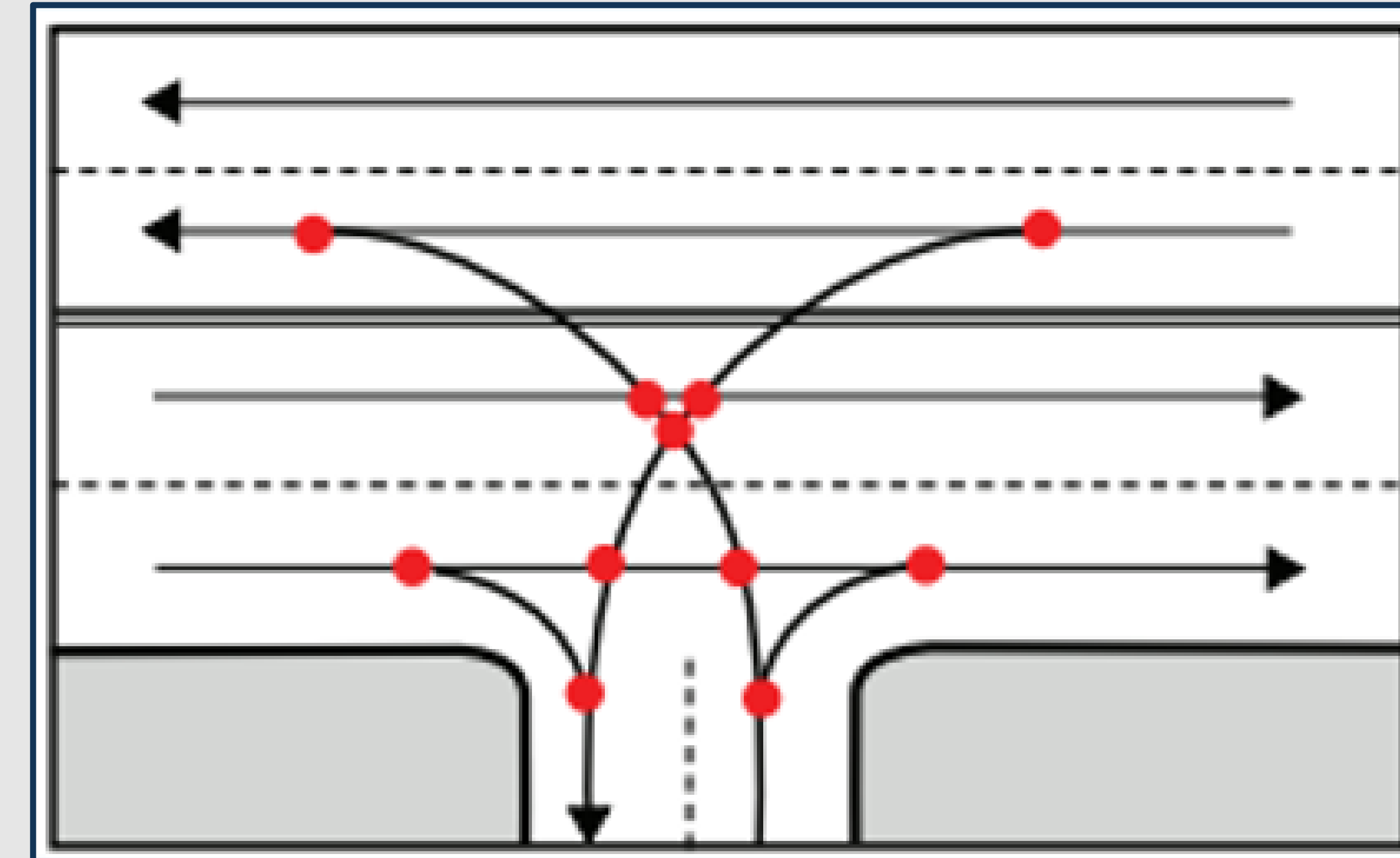


# Why Raised Medians?

# Safety: It's All About Reducing Crashes

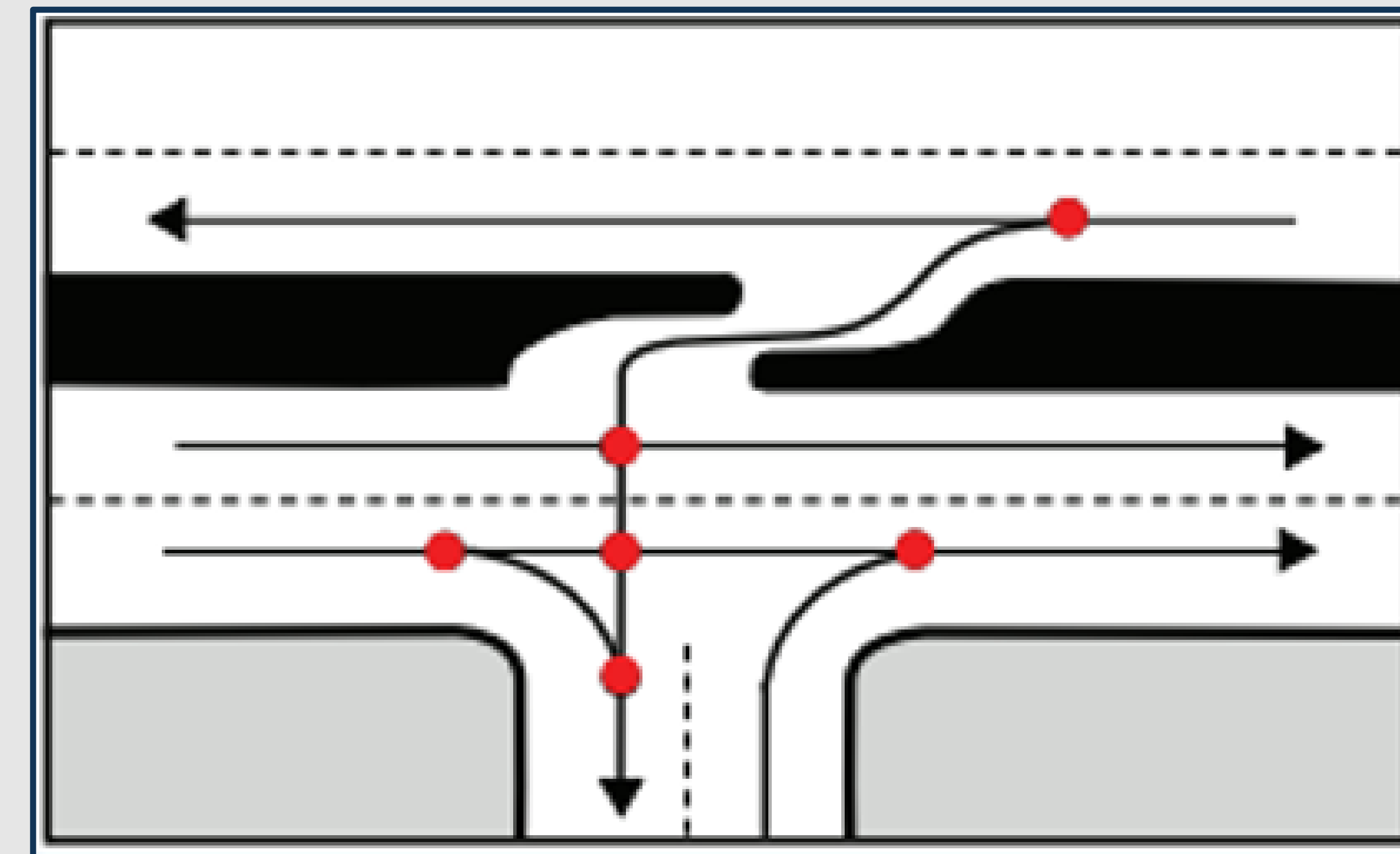
- Left turn crashes are the most serious crashes
- Based on nationwide studies, raised medians have an average crash rate of about **20% less** than a roadway with a two-way-left turn lane
- Based on nationwide studies, converting two-way left turn lane to raised medians reduces vehicle crashes by an estimated **27%**
- Conflict points are the points where two vehicles can potentially collide with each other at road intersections
- Fewer conflict points = fewer crashes

## Unlimited Access



More  
Conflicts

## Directional Access



Fewer  
Conflicts

Source: Adapted from the Florida Department of Transportation

# Local Changes Observed with Raised Medians – Texas Ave from FM 2818 to Deacon Dr



Prior to the project the average crash rate was **3.91** crashes per Million Vehicle Miles



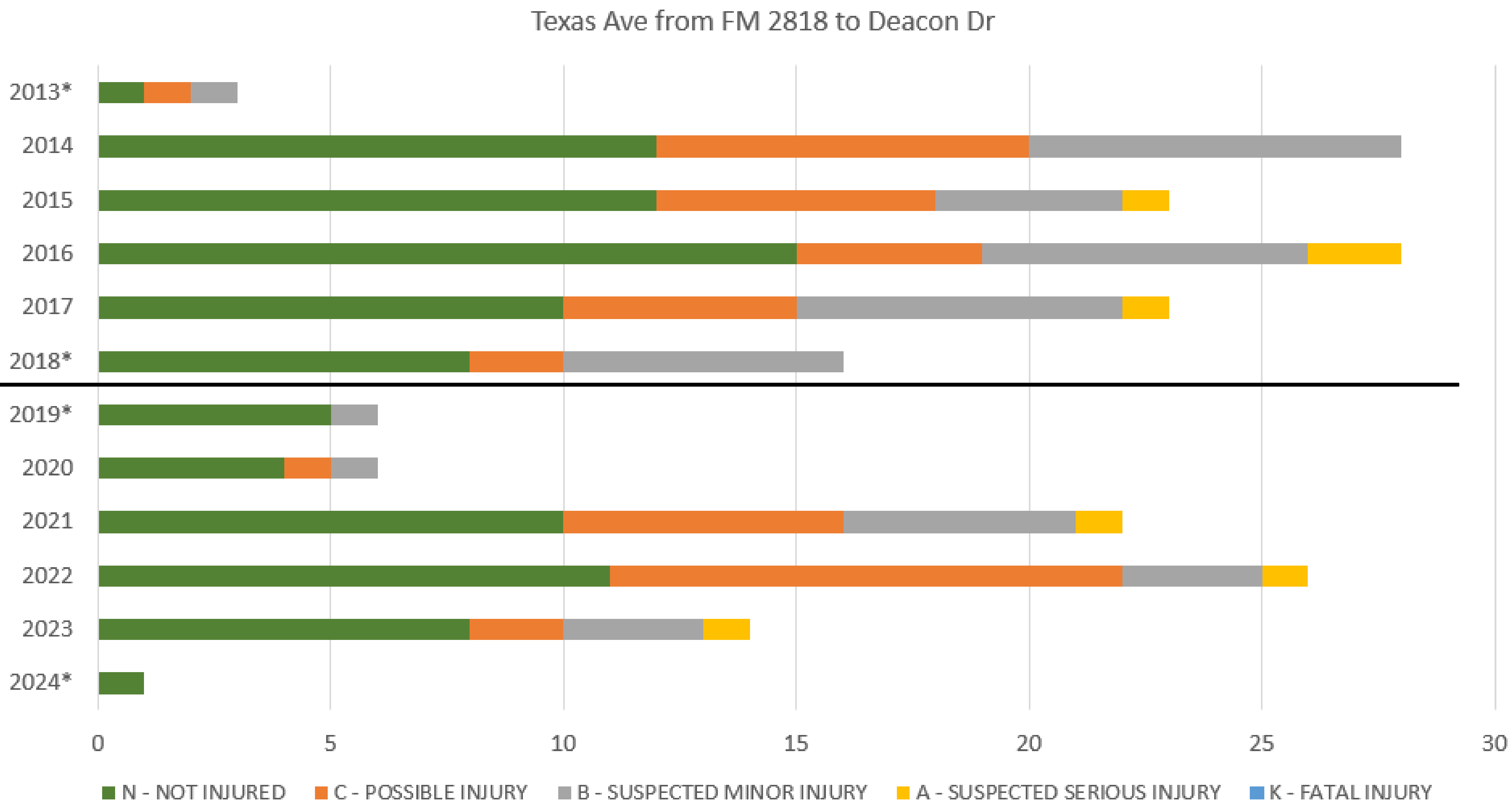
Rate = **3.82** crashes per million veh mi

**BEFORE** Raised Medians  
**AFTER** Raised Medians

Rate = **1.68** crashes per million veh mi



In the 5 years after the medians were installed, the crash rate reduced to **1.2** crashes per Million Vehicle Miles

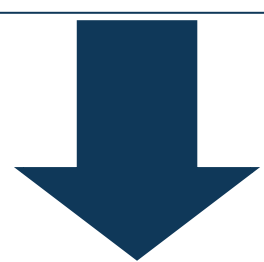


**The installation of medians resulted in a 56% reduction in crash rate along Texas Ave**  
\* Partial year due to construction

# Local Changes Observed with Raised Medians – University Dr from Texas Ave to Tarrow Rd



Prior to the project the average crash rate was **3.91** crashes per Million Vehicle Miles



Rate = **3.91** crashes per million veh mi

**BEFORE** Raised Medians

**AFTER** Raised Medians

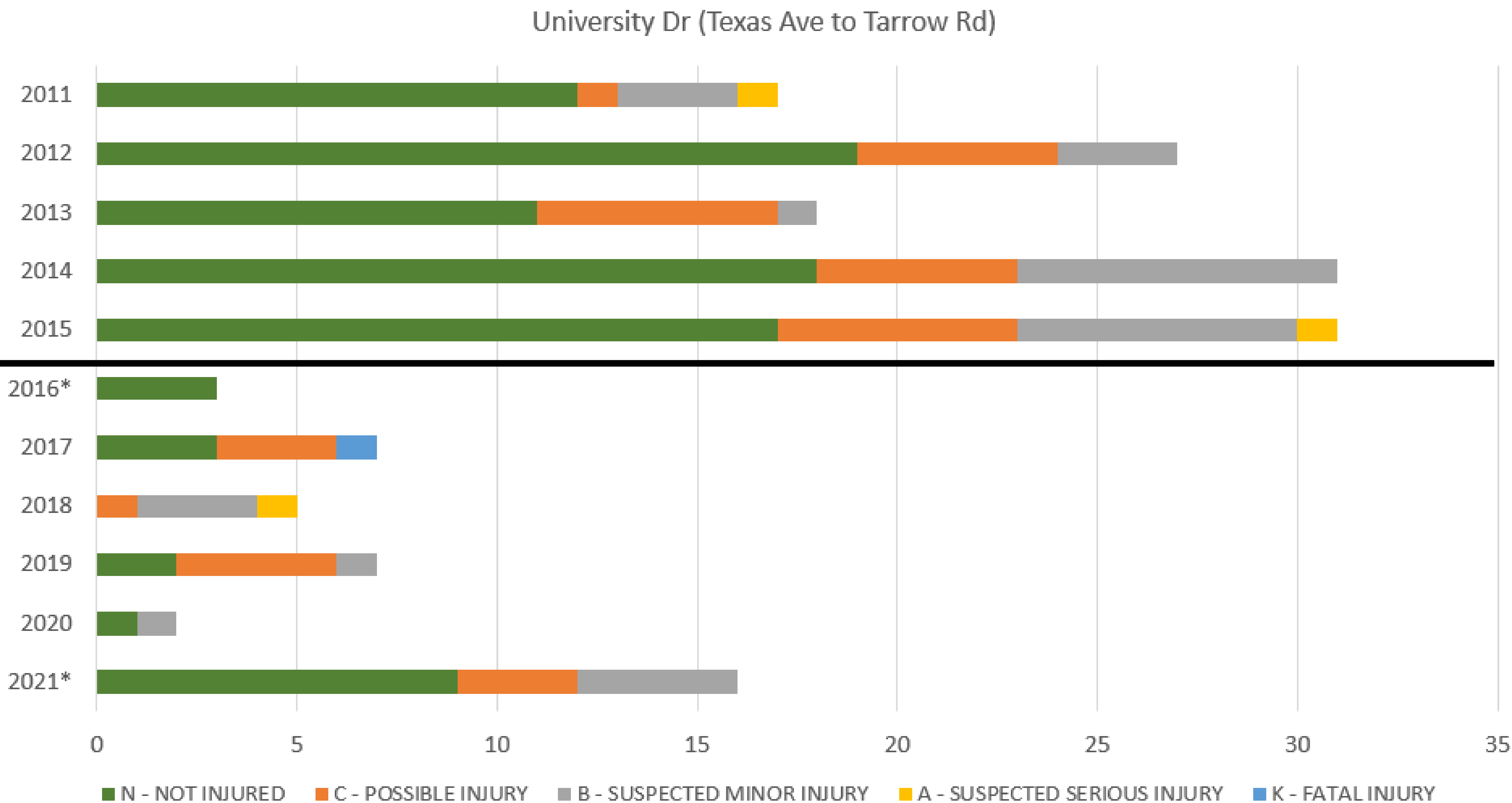
Rate = **1.26** crashes per million veh mi

In the 5 years after the medians were installed, the crash rate reduced to **1.2** crashes per Million Vehicle Miles

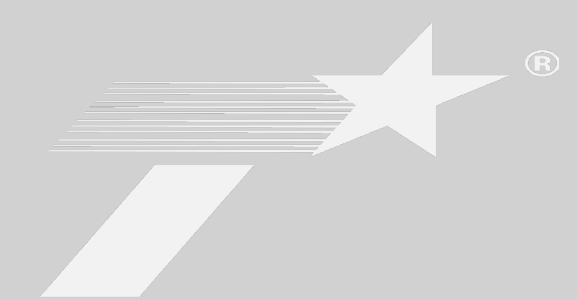


**Installation of medians resulted in a 68% reduction in crash rate along University Dr**

\* Partial year due to construction



# Comparing Previous Examples to FM 2154



The Crash Rate on FM 2154 is comparable to Crash Rates observed on Texas Ave and University Dr and it is anticipated that raised medians would result in a significant crash rate reduction

