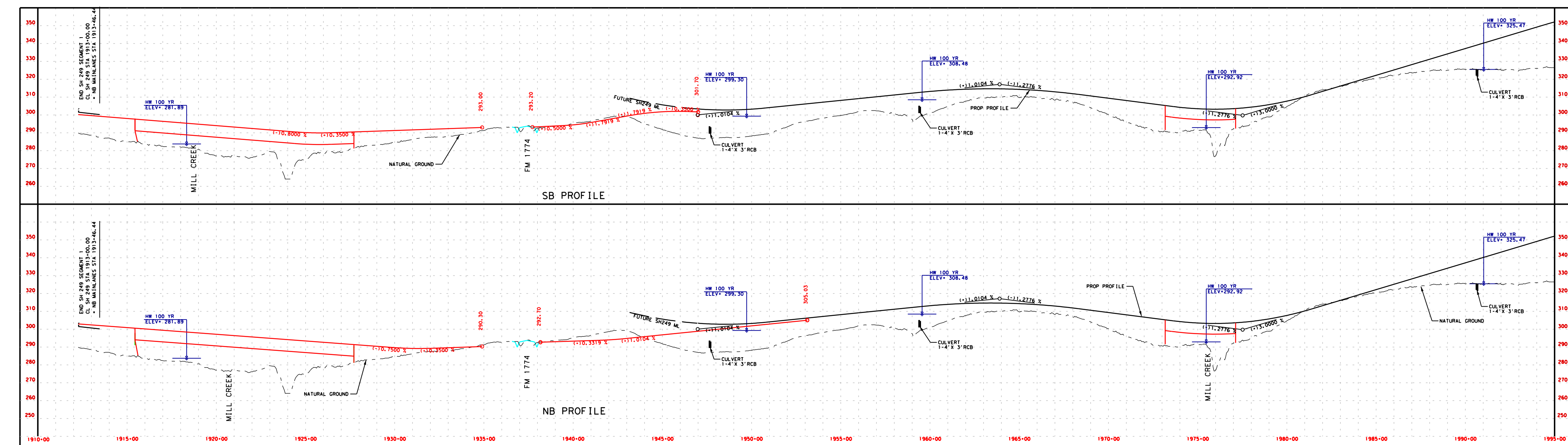
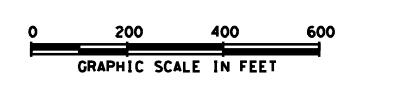


**PRELIMINARY
SUBJECT TO CHANGE**

RURAL PRINCIPAL ARTERIAL
DESIGN SPEED:
MAIN LANES 70 MPH



LEGEND	
PLAN LEGEND	
MAIN LANES	
BRIDGES	
DIRECT CONNECTOR	
EXISTING ROW TO BE REMOVED	
EXISTING ROW TO REMAIN	
EMBANKMENT	
CONTROL OF ACCESS	
PROPR ROW	
EXISTING ROW/PROPERTY LINES	
ACCESS ROAD	
PLANIMETRIC	
EXISTING LANE DIRECTIONAL INDICATOR	
PROPOSED LANE DIRECTIONAL INDICATOR	
DEPRESSED	
RETAINING WALL	
STRIPING	
TEMPORARY CONNECTIONS	
ROW, UNDER CONSTRUCTION	
DIRECTION OF FLOW	
PIPELINE	
WETLANDS	
WATER OF THE U.S. (MOUS)	
PROFILE LEGEND	
PROPOSED PROFILE	
EXISTING GROUND	
100 YEAR WATER SURFACE ELEVATION	

JACOBS
F-2966

CONCEPTUAL SCHEMATIC LAYOUT
MONTGOMERY & GRIMES COUNTIES
STATE HIGHWAY 249
FROM: SH 105
TO: FM 1774 IN 1000 MISSION
SHEET 1 OF 7

DATE: [blank]
APPROVED: [blank]
REVISION: [blank]
REVISION APPROVAL: [blank]

BRYAN DISTRICT