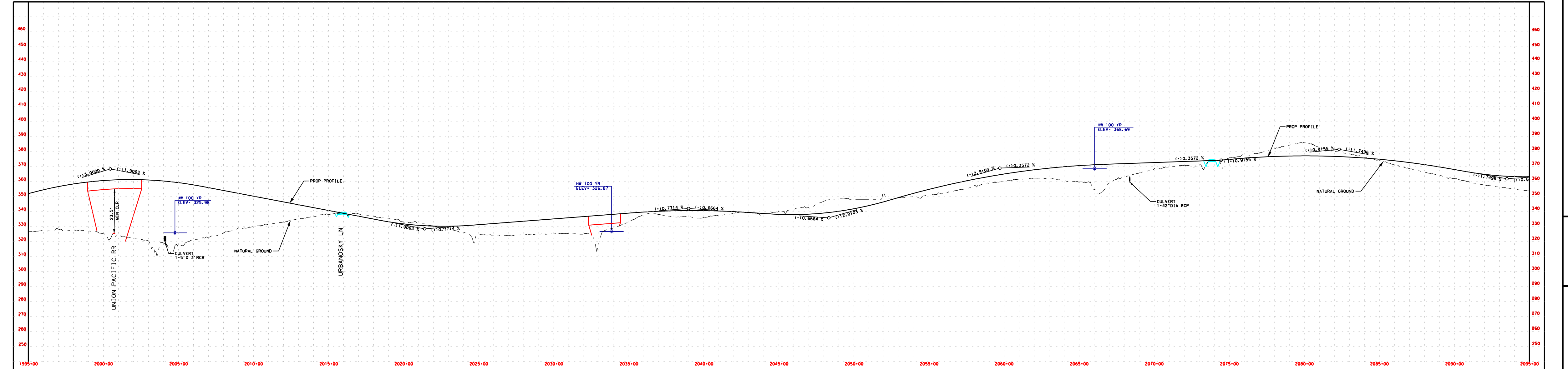
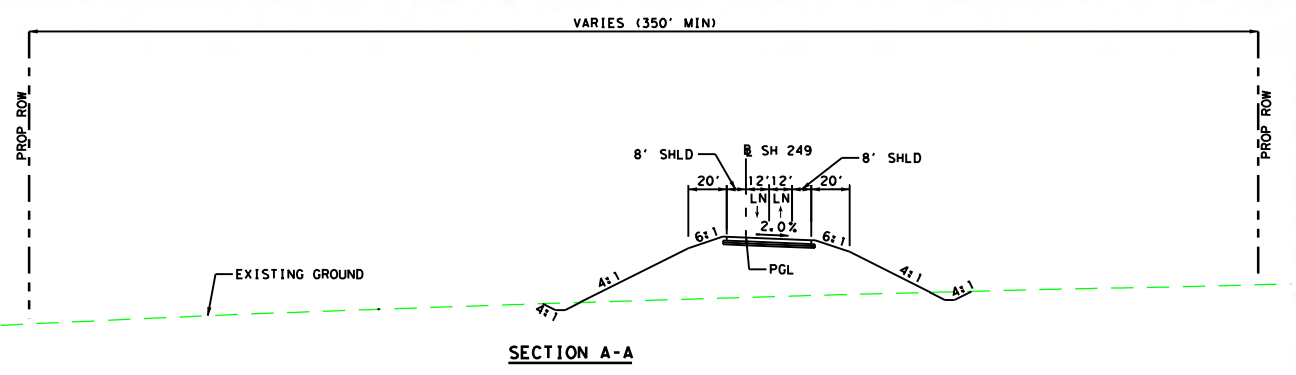
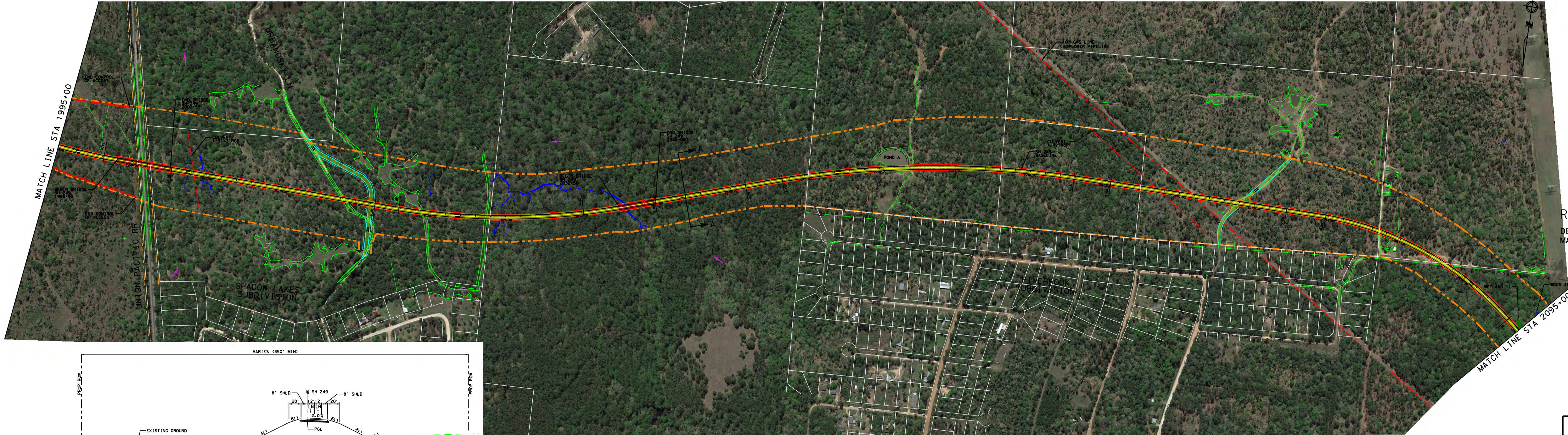


PROJECT LOCATION MAP
NOT TO SCALE

**PRELIMINARY
SUBJECT TO CHANGE**

RURAL PRINCIPAL ARTERIAL
DESIGN SPEED:
MAIN LANES 70 MPH



LEGEND

PLAN LEGEND

MAIN LANES	Yellow
BRIDGES	Orange
DIRECT CONNECTOR	Red
EXISTING ROW TO BE REMOVED	Green with X's
EXISTING ROW TO REMAIN	Green
EMBANKMENT	Blue
CONTROL OF ACCESS	Red dashed line
PROP ROW	Red dashed line
EXISTING ROW/PROPERTY LINES	Black dashed line
ACCESS ROAD	Blue dashed line
PLANIMETRIC	Green outline
EXISTING LANE DIRECTIONAL INDICATOR	Black arrow
PROPOSED LANE DIRECTIONAL INDICATOR	Red arrow
DEPRESSED	Red dashed line
RETAINING WALL	Red dashed line
STRIPING	Yellow and black dashed line
TEMPORARY CONNECTIONS	Blue dashed line
ROW, UNDER CONSTRUCTION	Red dashed line
DIRECTION OF FLOW	Blue arrow
PIPELINE	Red dashed line
WETLANDS	Green wavy line
WATER OF THE U.S. (WOU)	Blue wavy line

PROFILE LEGEND

PROPOSED PROFILE	Solid line
EXISTING GROUND	Dashed line
100 YEAR WATER SURFACE ELEVATION	Blue line



CONCEPTUAL SCHEMATIC LAYOUT
MONTGOMERY & GRIMES COUNTIES
STATE HIGHWAY 249

FROM: SH 105
TO: FM 1774 IN 1000 MISSION
SHEET 2 OF 7

BRYAN DISTRICT