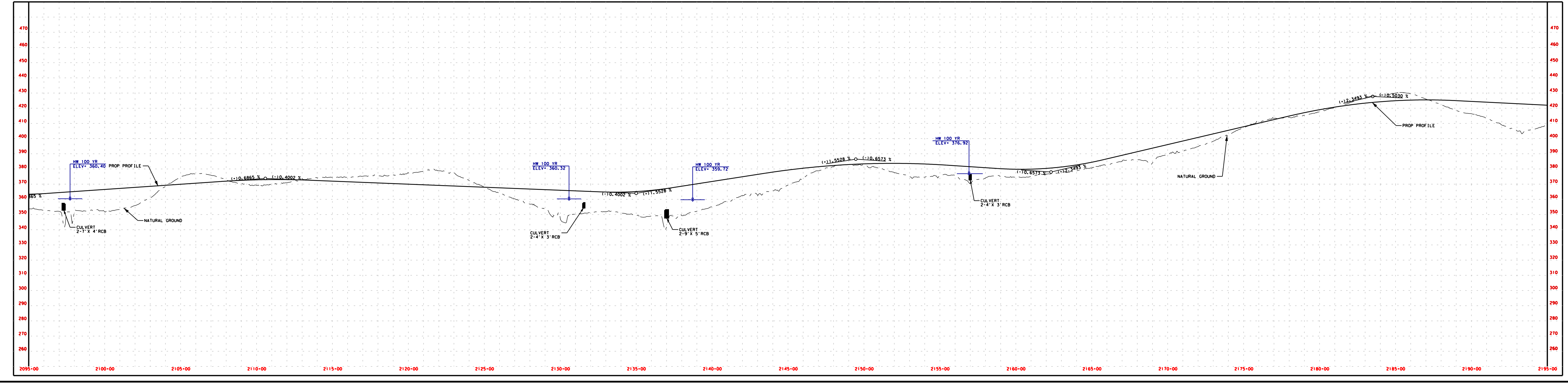
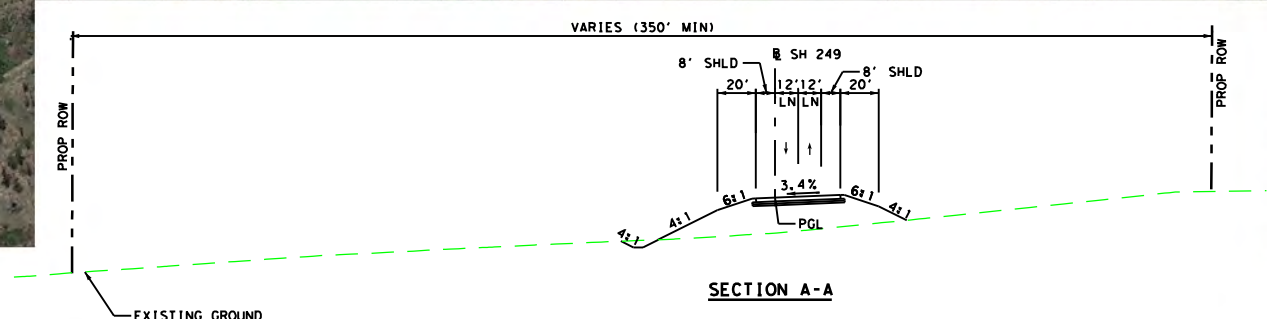
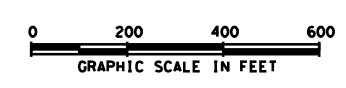


PROJECT LOCATION MAP
NOT TO SCALE

**PRELIMINARY
SUBJECT TO CHANGE**

RURAL PRINCIPAL ARTERIAL
DESIGN SPEED:
MAIN LANES 70 MPH



LEGEND

PLAN LEGEND

SYMBOL	DESCRIPTION
[Yellow line]	MAIN LANES
[Orange line]	BRIDGES
[Red line]	DIRECT CONNECTOR
[Cross-hatched area]	EXISTING ROW TO BE REMOVED
[Green line]	EXISTING ROW TO REMAIN
[Red line with triangles]	EMBANKMENT
[Red line with triangles]	CONTROL OF ACCESS
[Dashed line]	PROP ROW
[Dashed line]	EXISTING ROW/PROPERTY LINES
[Dashed line]	ACCESS ROAD
[Dashed line]	PLANIMETRIC
[Green arrow]	EXISTING LANE DIRECTIONAL INDICATOR
[Red arrow]	PROPOSED LANE DIRECTIONAL INDICATOR
[Red line with triangles]	DEPRESSED
[Red line with triangles]	RETAINING WALL
[Red line with triangles]	STRIPING
[Red line with triangles]	TEMPORARY CONNECTIONS
[Red line with triangles]	ROW, UNDER CONSTRUCTION
[Red line with triangles]	DIRECTION OF FLOW
[Red line with triangles]	PIPELINE
[Green line]	WETLANDS
[Blue line]	WATER OF THE U.S. (WOU)

PROFILE LEGEND

[Solid line]	PROPOSED PROFILE
[Dashed line]	EXISTING GROUND
[Blue line]	100 YEAR WATER SURFACE ELEVATION

JACOBS
F-2966

CONCEPTUAL SCHEMATIC LAYOUT
MONTGOMERY & GRIMES COUNTIES
STATE HIGHWAY 249

FROM: SH 105
TO: FM 1774 IN 1000 MISSION
SHEET 3 OF 7

DATE: [blank]
APPROVED: [blank]
REVISION: [blank]
DESIGN: [blank]

BRYAN DISTRICT