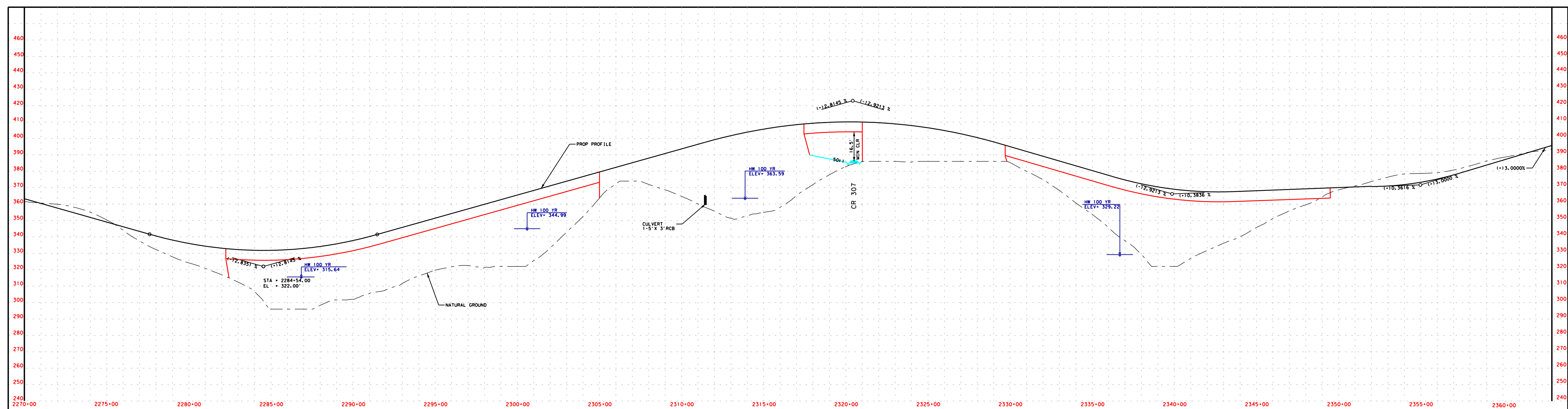
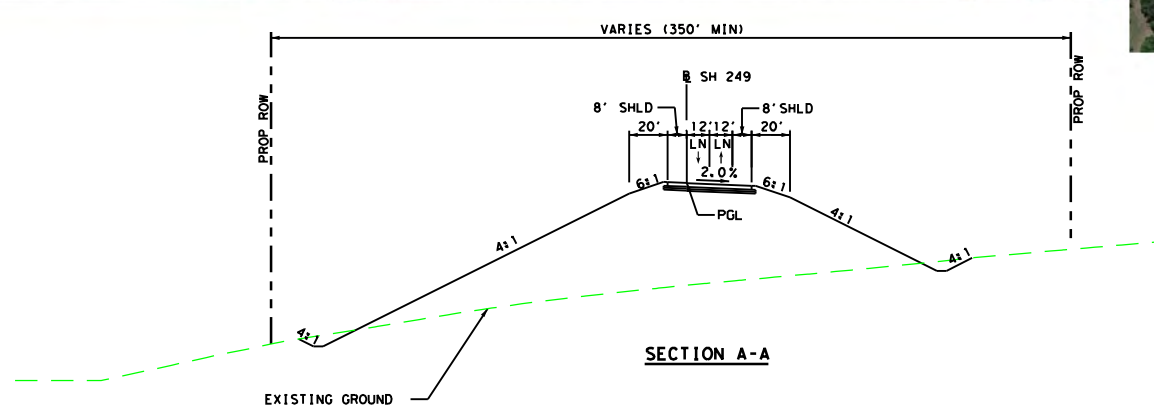
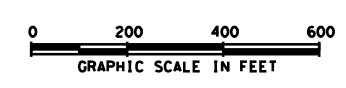


PROJECT LOCATION MAP  
NOT TO SCALE

**PRELIMINARY  
SUBJECT TO CHANGE**

RURAL PRINCIPAL ARTERIAL  
DESIGN SPEED:  
MAIN LANES 70 MPH



LEGEND	
PLAN LEGEND	
SYMBOLOLOGY	
MAIN LANES	
BRIDGES	
DIRECT CONNECTOR	
EXISTING ROW TO BE REMOVED	
EXISTING ROW TO REMAIN	
EMBANKMENT	
CONTROL OF ACCESS	
PROP ROW	
EXISTING ROW/PROPERTY LINES	
ACCESS ROAD	
PLANIMETRIC	
EXISTING LANE DIRECTIONAL INDICATOR	
PROPOSED LANE DIRECTIONAL INDICATOR	
DEPRESSED	
RETAINING WALL	
STRIPING	
TEMPORARY CONNECTIONS	
ROW, UNDER CONSTRUCTION	
DIRECTION OF FLOW	
PIPELINE	
WETLANDS	
WATER OF THE U.S. (WOU)	
PROFILE LEGEND	
PROPOSED PROFILE	
EXISTING GROUND	
100 YEAR WATER SURFACE ELEVATION	

**JACOBS**  
F-2966

CONCEPTUAL SCHEMATIC LAYOUT  
MONTGOMERY & GRIMES COUNTIES  
STATE HIGHWAY 249

FROM: SH 105  
TO: FM 1774 IN 1000 MISSION  
SHEET 5 OF 7

BRYAN DISTRICT