

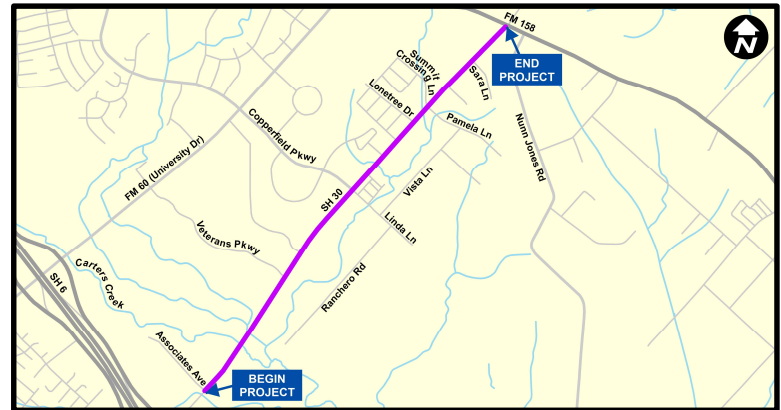
SH 30 (Harvey Road) Corridor Plan

The Texas Department of Transportation – Bryan District, in collaboration with Brazos County and the City of College Station, is developing a corridor plan to improve SH 30 from Associates Avenue to FM 158 in Brazos County, Texas.

Corridor Plan Goals & Objectives

- Address current congestion and plan for future growth by adding travel lanes
- Enhance safety by upgrading the roadway design
- Provide additional connectivity by adding a new shared use path for pedestrians and bicyclists

Additional right-of-way would be required to implement the corridor plan.



Alternative A:

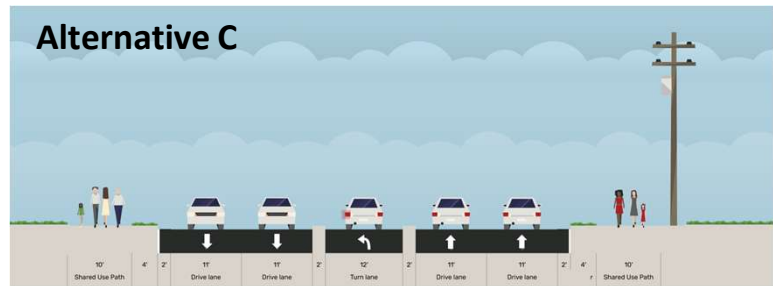
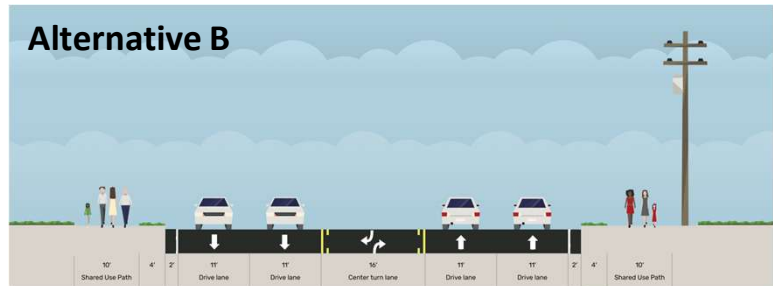
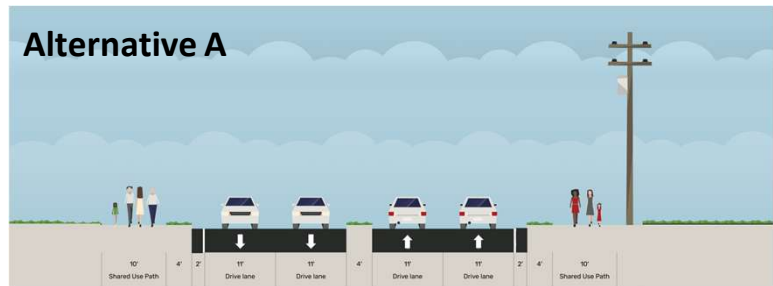
- Two lanes in each direction
- Narrow raised concrete median (4 ft)
- Roundabouts
- No displacements

Alternative B:

- Two lanes in each direction
- Center two-way left-turn lane
- 7 Multi-Family displacements
- 1 Commercial displacement

Alternative C:

- Two lanes in each direction
- Raised concrete median
- Hooded left-turn and traditional turn lanes at intersections
- Loops allow for u-turns
- 7 Multi-Family displacements
- 1 Commercial displacement



Questions or Comments

- 📞 (979) 778-9231
- ✉ BRY_PublicComment@txdot.gov
- 🌐 www.txdot.gov | keywords: "SH 30 Corridor Plan"

The environmental review, consultation, and other actions required by applicable Federal environmental laws for this project are being, or have been, carried-out by TxDOT pursuant to 23 USC 327 and a Memorandum of Understanding dated July 17, 2025, and executed by FHWA and TxDOT.