

Welcome

SH 47 at SH 21 Interchange Project

Open House Public Meeting

Thursday, November 14, 2024 | 4:30 PM - 6:30 PM
Texas A&M University System, RELLIS Campus
Center for Infrastructure Renewal
1041 RELLIS Parkway, Bryan, TX 77807

Why am I here?

- Learn about the SH 47 at SH 21 Interchange Project.
- Provide comments on the proposed project.

Project Overview

CSJ (Project Number)

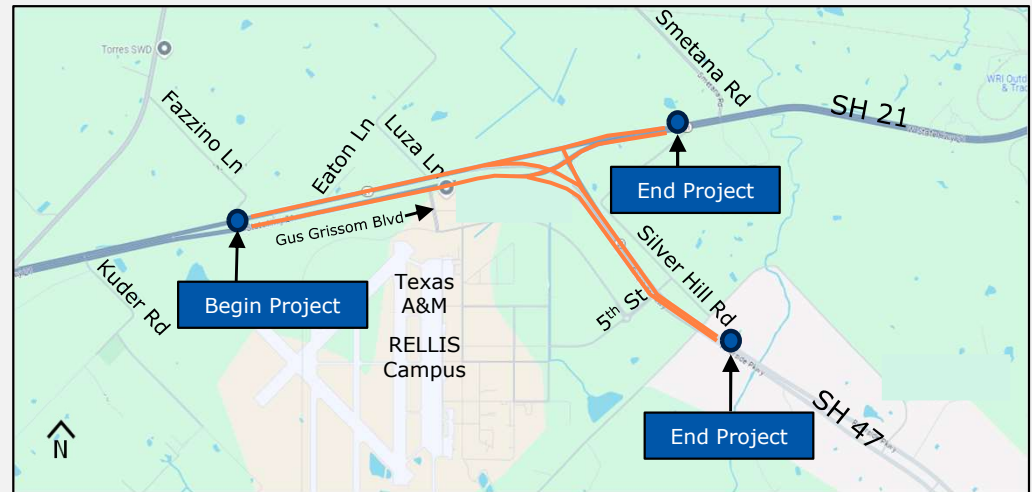
3138-02-016

Location

West of Fazzino Lane on SH 21 to north of Thompsons Creek on SH 47

Total Length

2.7 miles



Proposed Improvements



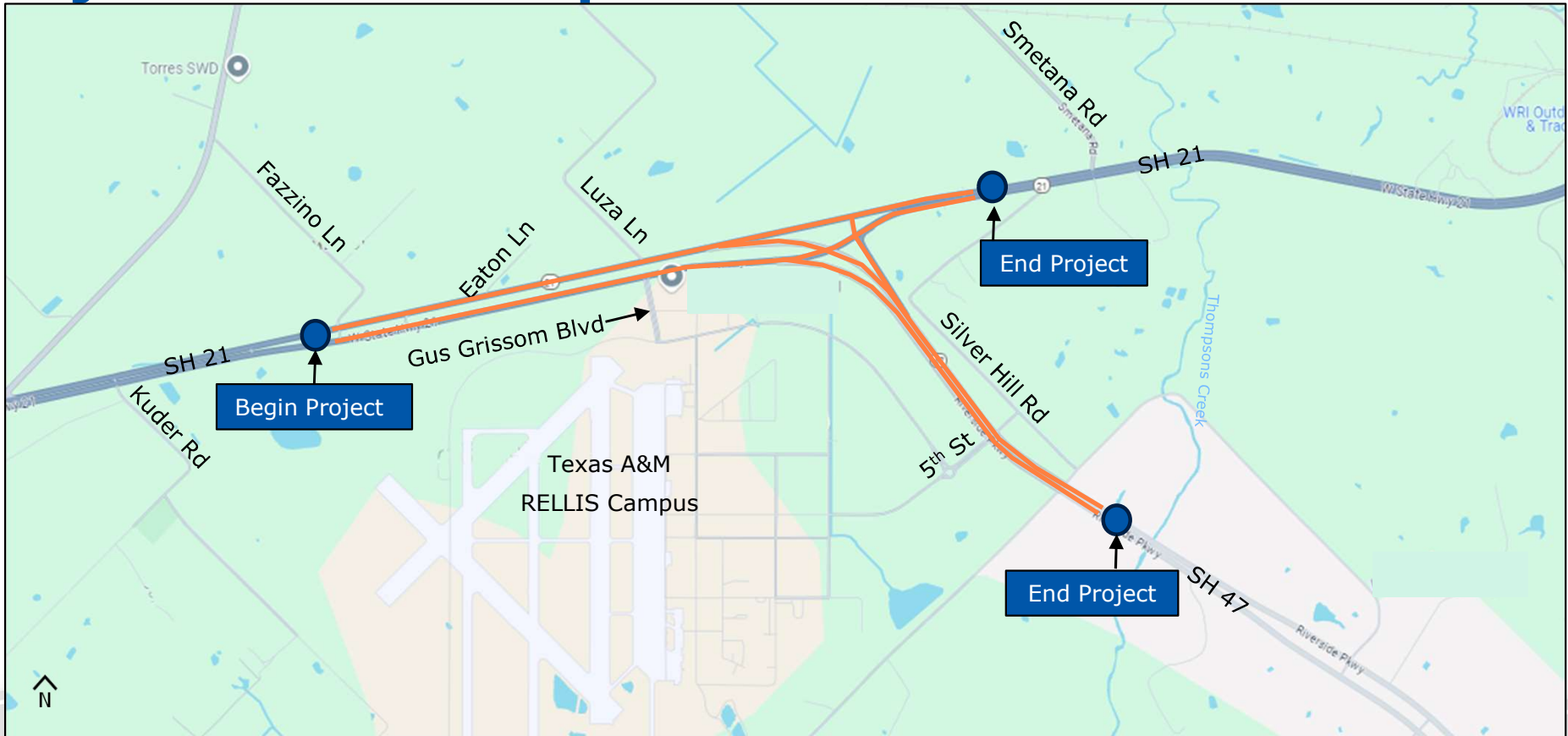
Reconfigure the SH 47 at SH 21 interchange



Construct grade separated overpasses:

- SH 47 at 5th Street
- SH 21 at a new street

Project Location Map



Need

This interchange project is needed because of:

- Insufficient roadway capacity to accommodate future traffic volumes, land development and population growth in the area.
- Limited connectivity with local roadways that intersect SH 21 and SH 47 near the interchange.
- A moderate number of crashes within the project corridor.

Purpose

The purpose of this project is to:

- Improve mobility and traffic flow at the intersection by providing added capacity to accommodate future traffic volumes.
- Improve connectivity by upgrading adjacent intersections with local roadways.
- Reduce crash rates at intersections and enhance safety by providing a roadway that meets current design standards.

Bond Program and Funding

Brazos County and the Texas Department of Transportation (TxDOT), in collaboration with the member agencies of the Bryan/College Station Metropolitan Planning Organization (B/CS MPO), are developing a proposed project to improve the SH 47 at SH 21 interchange in Brazos County, Texas. The proposed Brazos County project is being developed under the 2022 Brazos County Transportation Road Improvement Program, a bond program approved by voters in November 2022.

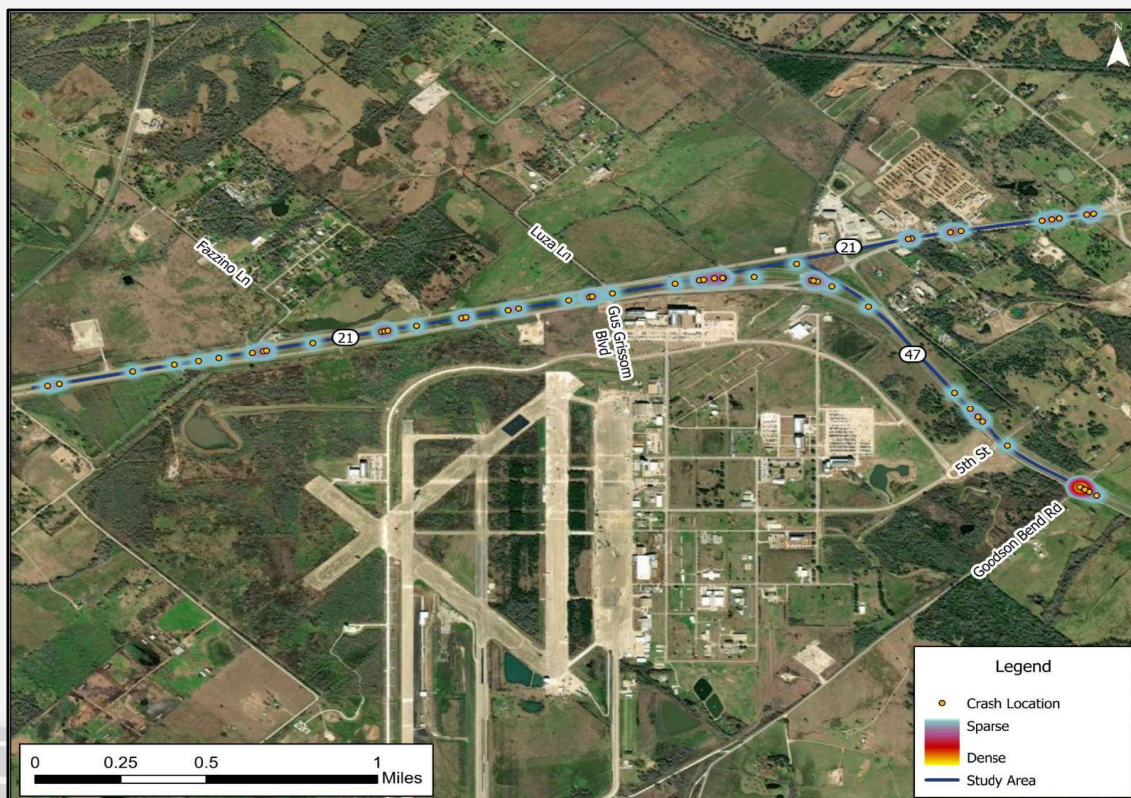
While the project design and environmental studies are funded under the bond program, **the project is not currently funded for construction.**

Crash History 2018-2022

63
Crashes

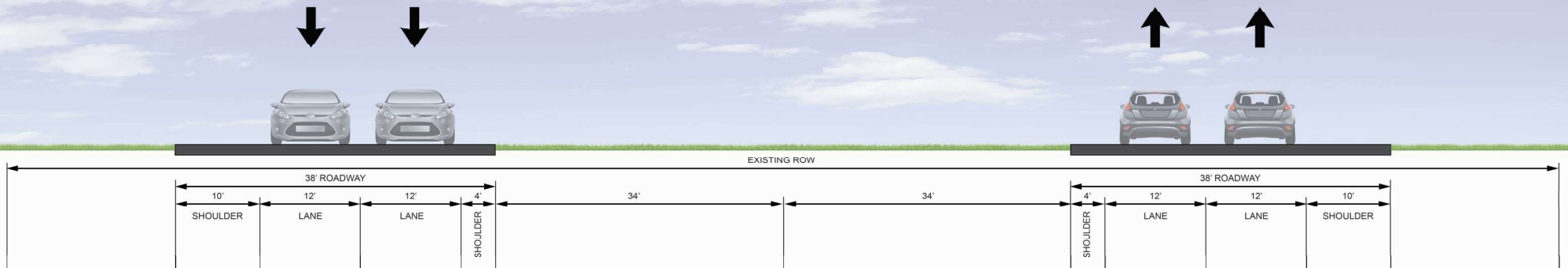
1
Fatality

1
Serious Injury



Existing Typical Sections

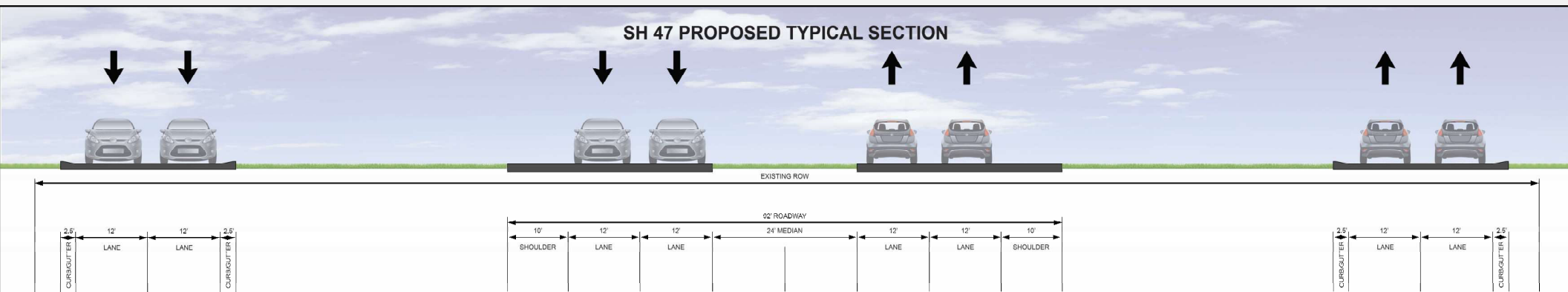
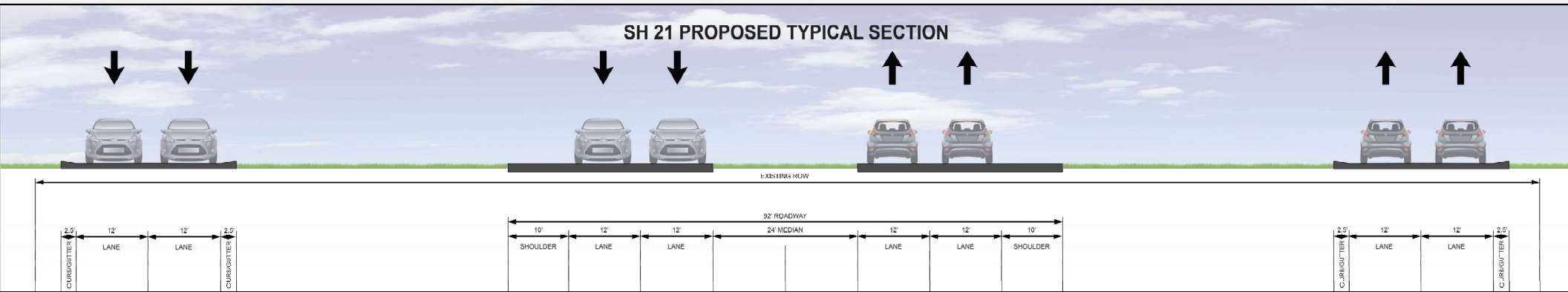
SH 21 EXISTING TYPICAL SECTION



SH 47 EXISTING TYPICAL SECTION










Proposed Typical Sections

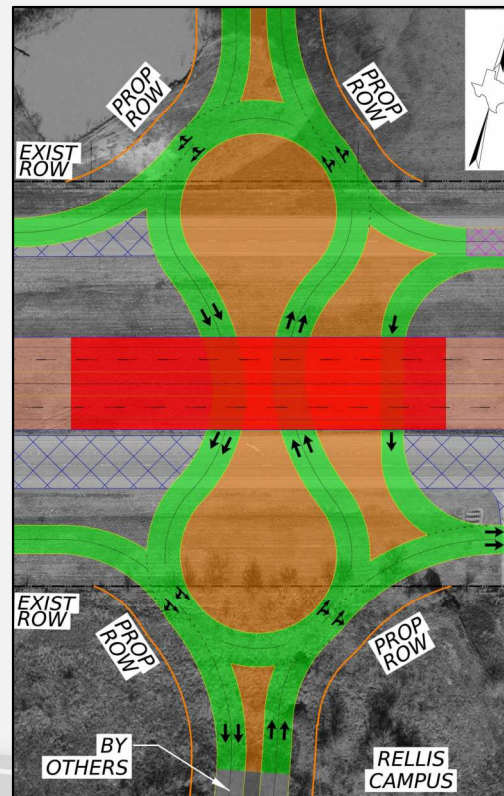


Proposed New SH 21 Intersection Alternatives

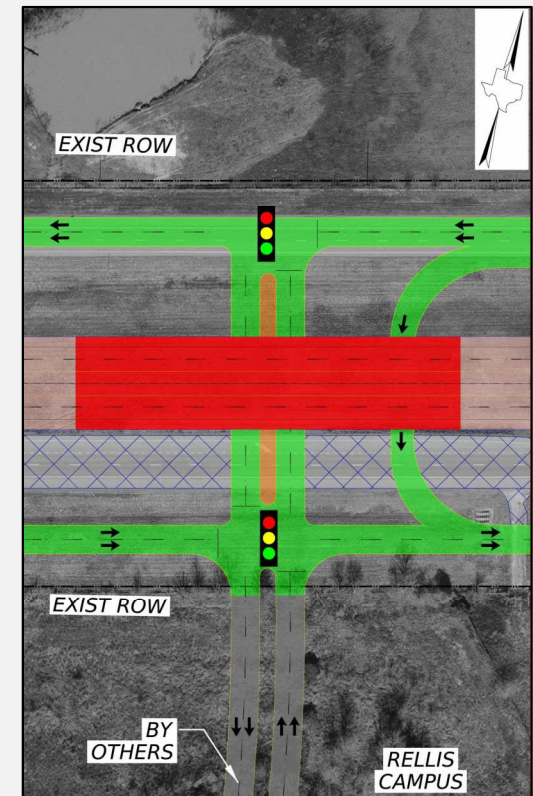
Between Fazzino Lane and Luza Lane:

- Overpass intersection
- Roundabout option
- Signalized option
- Right-of-way would be required for the roundabout option

LEGEND	
PLAN	
	PROPOSED MAIN LANE
	PROPOSED FRONTAGE RD/ CROSS STREET
	PROPOSED RAISED MEDIAN
	PROPOSED BRIDGE
	PROPOSED MILL & OVERLAY
	REMOVAL
	EXISTING ROW



Roundabout Option

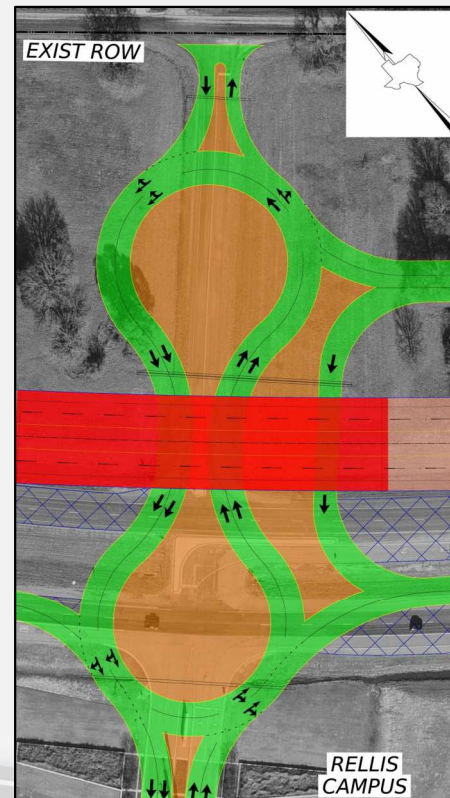
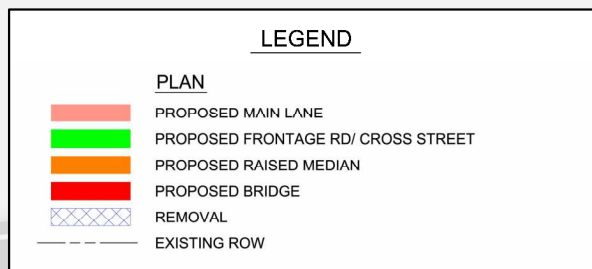


Signalized Option

Proposed SH 47 Intersection Alternatives

At 5th Street and Silver Hill Road:

- Overpass intersection
- Roundabout option
- Signalized option
- No right-of-way would be required

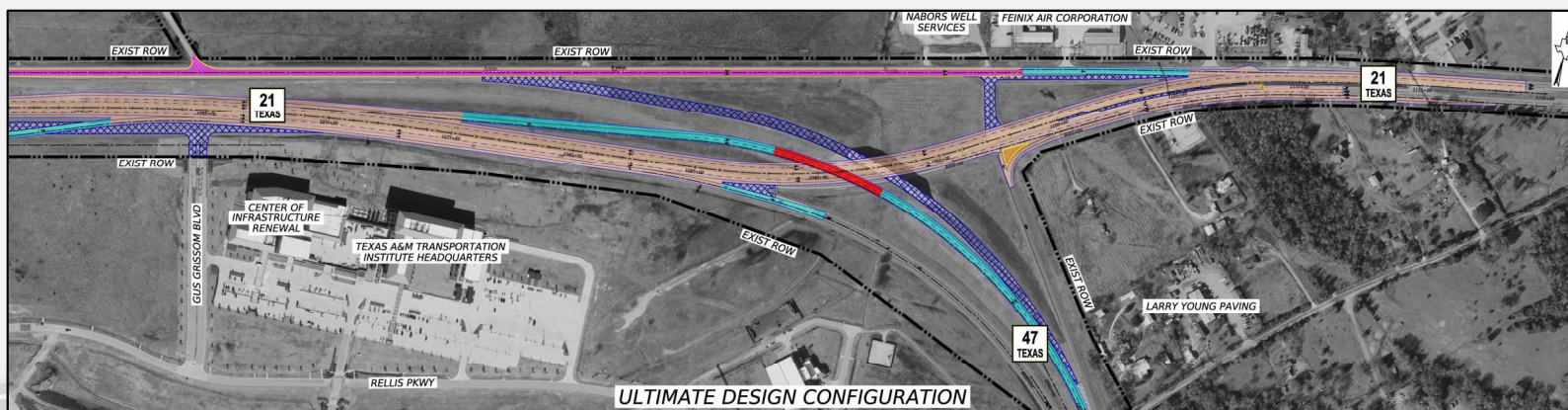
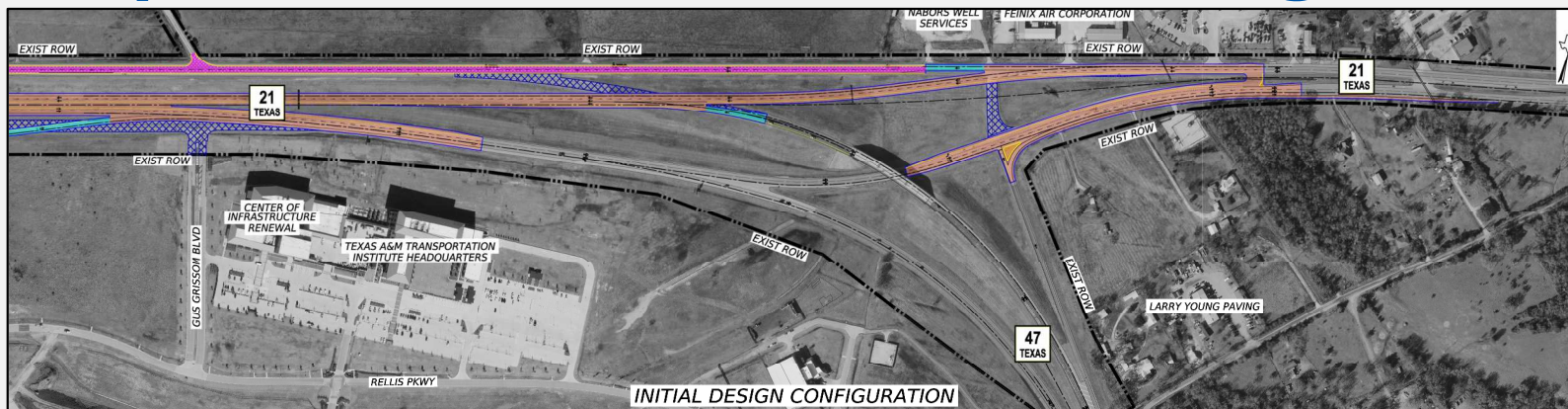


Roundabout Option



Signalized Option

Proposed SH 21 at SH 47 Interchange Alternatives



LEGEND	
PLAN	
	PROPOSED MAIN LANE
	PROPOSED RAMP
	PROPOSED RAISED MEDIAN
	PROPOSED BRIDGE
	PROPOSED MILL & OVERLAY
	REMOVAL
	EXISTING ROW

National Environmental Policy Act (NEPA) Assignment to TxDOT

The environmental review, consultation, and other actions required by applicable Federal environmental laws for this project are being, or have been, carried-out by TxDOT pursuant of 23 U.S.C 327 and a Memorandum of understanding dated December 9, 2019, and executed by the FHWA and TxDOT.

Environmental Analyses

- The NEPA requires an analysis of environmental considerations to: 1) ensure environmental protection, and 2) obtain input from the public to be used as part of the project decision-making process.
- TxDOT analyzes a variety of environmental resources prior to making project decisions. Resources evaluated as part of the NEPA project review process, and potential impacts to those resources, may include analyses associated with:



Air Quality



Community Impacts



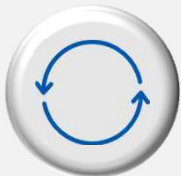
Demographics, Environmental Justice, and Limited English Proficiency



Cultural Resources (archeological and historical)



Hazardous Materials



Indirect and Cumulative Impacts



Land Use/Development, Farmlands and Parklands



Threatened and Endangered Species (federal and state-listed species)



Traffic Noise

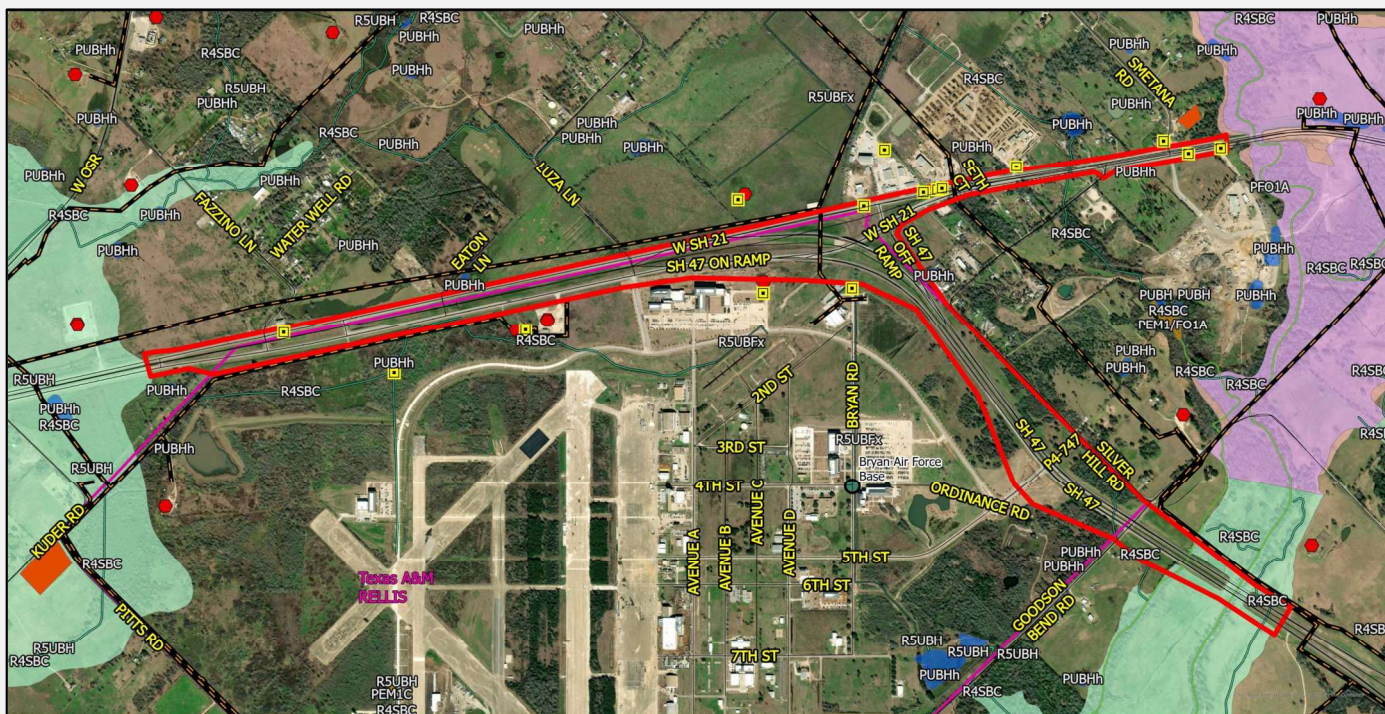


Vegetation and Wildlife



Water Resources (rivers, streams, creeks, wetlands)

Environmental Constraints Map



SH 47 AT SH 21 INTERCHANGE
CSJ: 3138-02-016
ENVIRONMENTAL CONSTRAINTS MAP
BRAZOS COUNTY, TEXAS

N

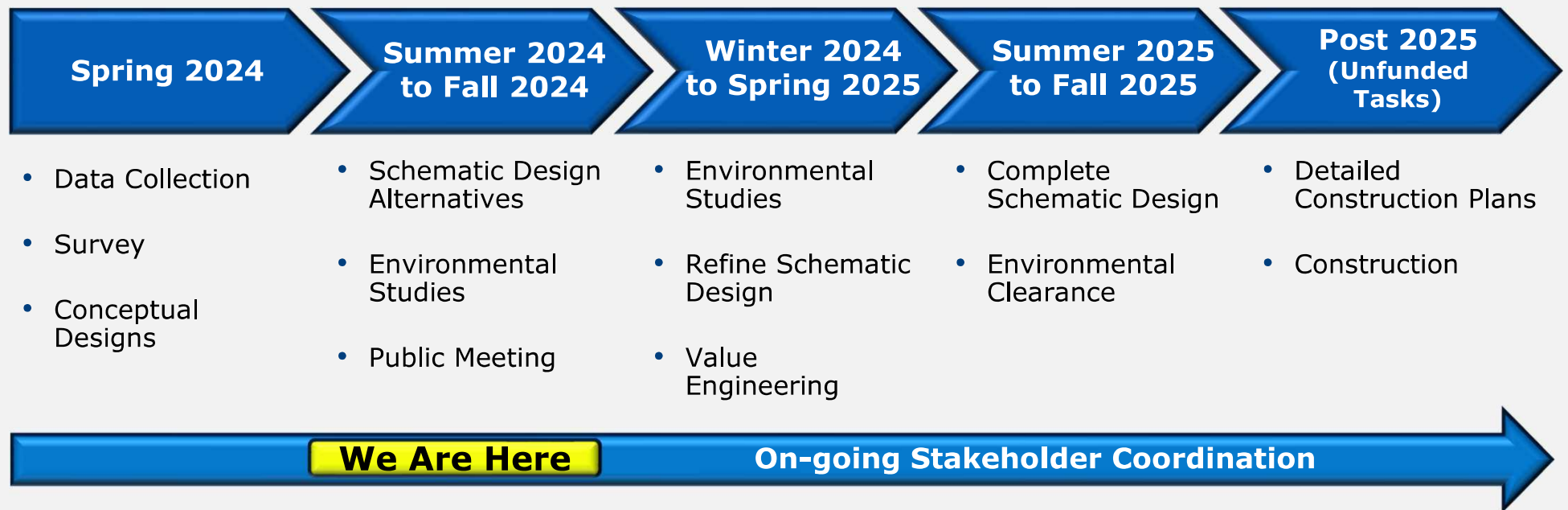
0 0.2 0.5
Mi

LEGEND

- NWI WETLANDS
 - PUBHH
 - R4SBC / R5UBH / R5UBFX
- FLOOD ZONES
 - ZONE A - SPECIAL FLOOD HAZARD AREA
 - ZONE AE - 100 YEAR FLOODPLAIN
 - ZONE X - 500 YEAR FLOODPLAIN
- + RAILROADS
- HAZMAT SITES
- PIPELINES
- OIL/GAS WELL
- HISTORICAL MARKER
- PROJECT AREA
- TEXAS A&M RELIS CAMPUS
- CEMETERIES

The identification of environmental constraints early in the planning, design, and environmental review process allows for the avoidance and minimization of potential environmental impacts as the design advances.

Project Timeline and Next Steps



Share Your Input

We appreciate your feedback! TxDOT is available to answer questions anytime during the project development process.

Visit **www.txdot.gov**, keyword search **"SH 47 at SH 21 Interchange"** for additional project information and downloads.



Comment Box

Place comments into the comment box as you leave the meeting.



Email

BRY_PublicComment
@txdot.gov



Mail

TxDOT
Bryan District Office
ATTN: Sydney Fox
2591 N. Earl Rudder
Freeway
Bryan, TX 77803

All comments must be received or postmarked by Monday, December 2, 2024, to be included in the official public meeting record.