



TEXAS DEPARTMENT OF TRANSPORTATION

# WELCOME

The environmental review, consultation, and other actions required by applicable Federal environmental laws for this project are being, or have been, carried-out by TxDOT pursuant to 23 U.S.C. 327 and a Memorandum of Understanding dated December 9, 2019, and executed by FHWA and TxDOT.



# **US 290 AT FM 1155 PUBLIC MEETING**

**OPEN HOUSE 4:30 PM TO 6:00 PM  
PRESENTATION BEGINS AT 6:00 PM**



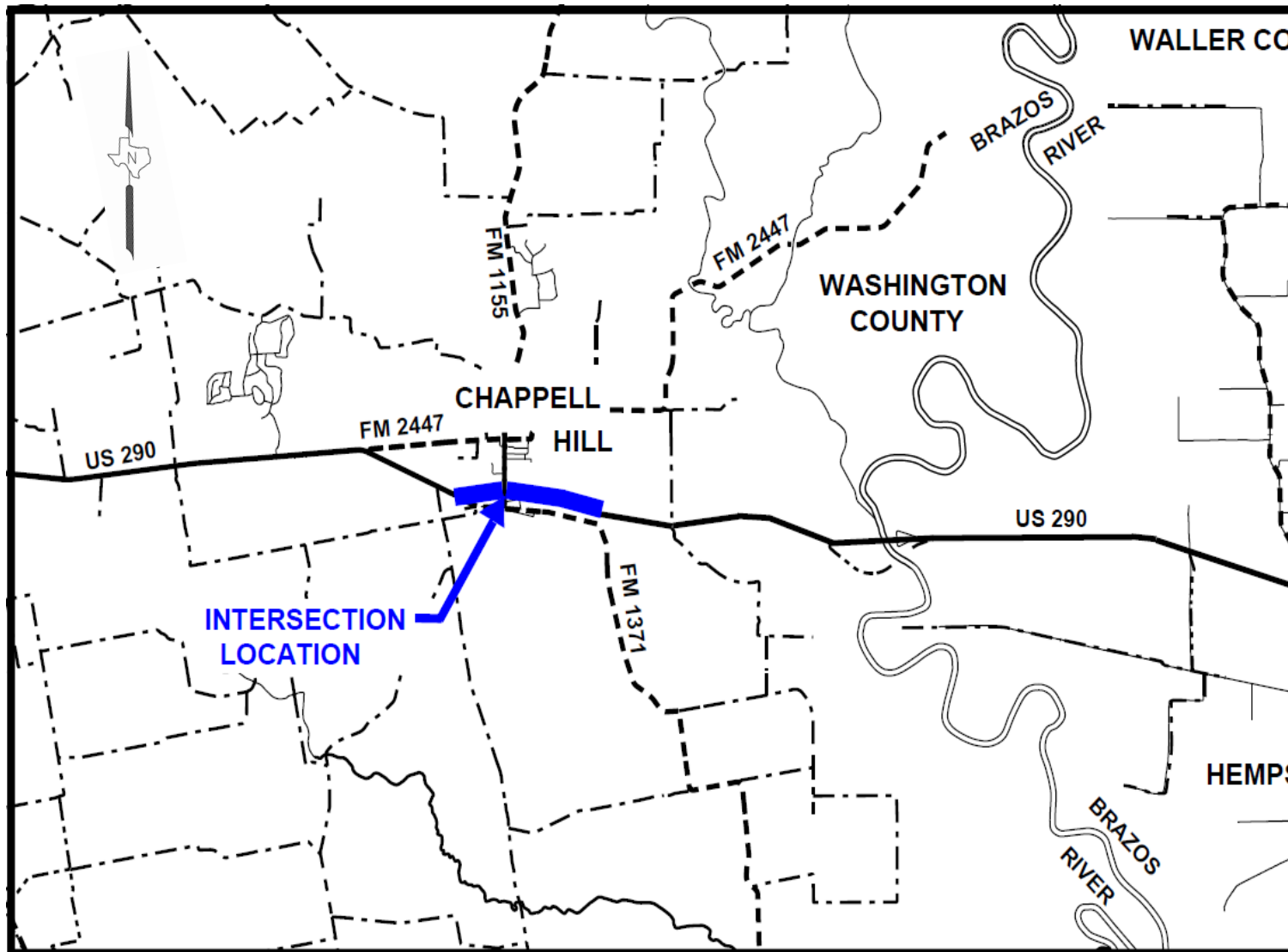
# NEAR-TERM SOLUTION



# LONG-TERM SOLUTION



# Project Location



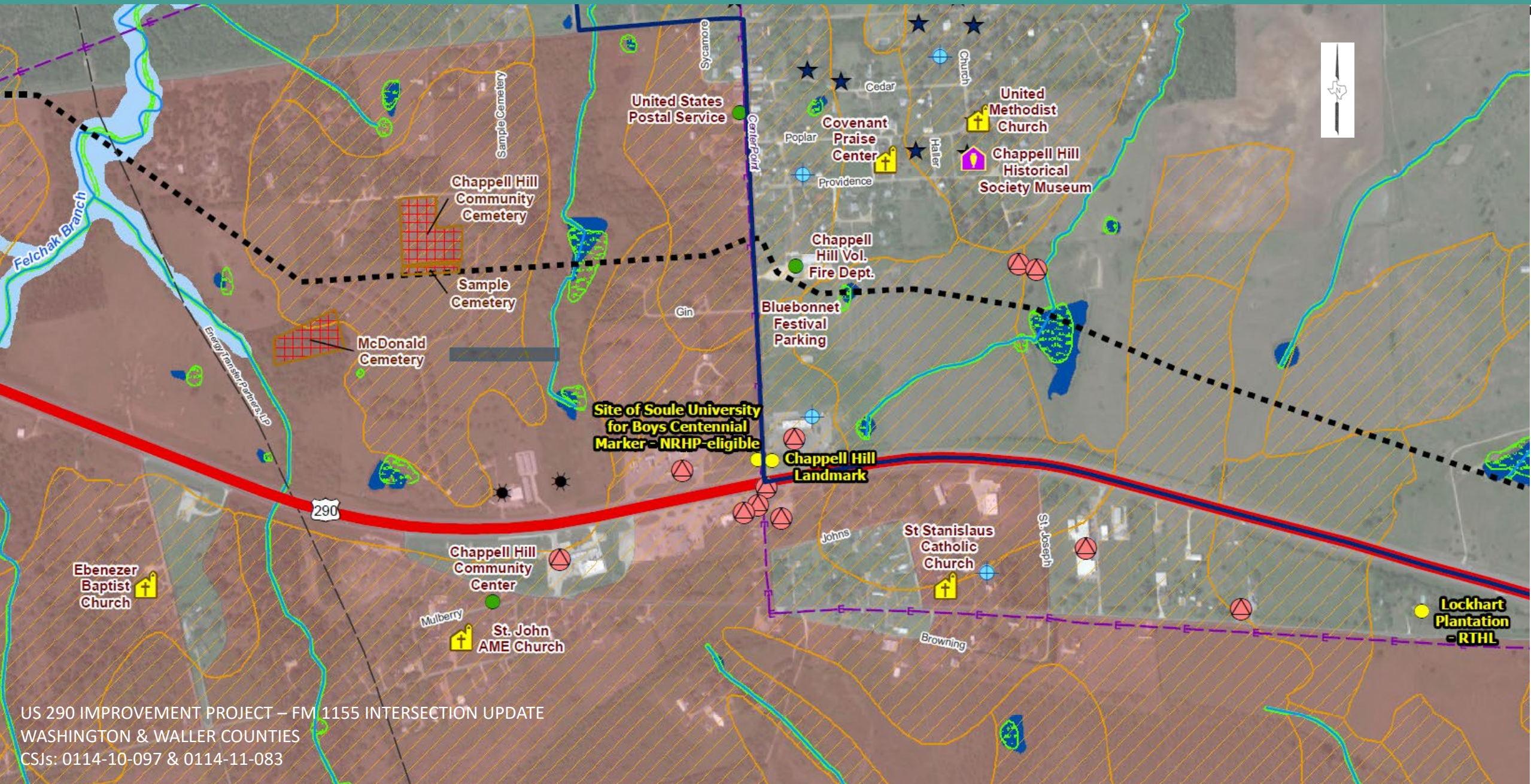
## Limits:

Study area in the vicinity of the FM 1155 Intersection

## Location:

Washington County

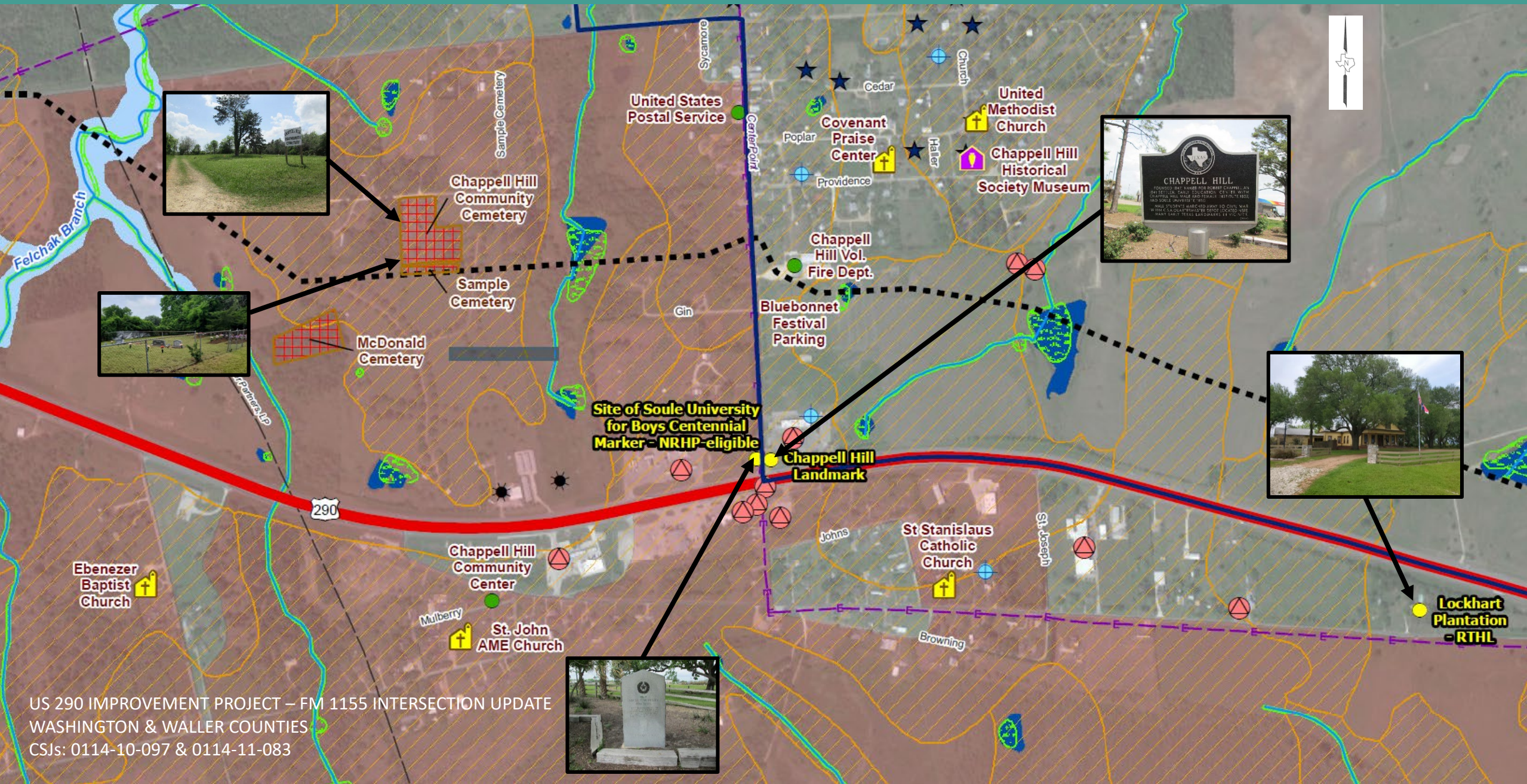
# US 290 Draft Environmental Constraints Map – Enlarged Section at FM 1155



US 290 IMPROVEMENT PROJECT – FM 1155 INTERSECTION UPDATE  
 WASHINGTON & WALLER COUNTIES  
 CSJs: 0114-10-097 & 0114-11-083

Legend				
Study Area	Electricity Transmission Line	Community Facility	National Register of Historic Places Site	High-Minority Area
Project Location	Pipeline	Museum	Texas Historical Commission Historical Marker	National Hydrography Dataset Waterbody
National Bridge Inventory (NBI) Bridge	Oil and Gas Well	Place of Worship	Prime Farmland Soil	<b>FEMA Flood Hazard Zones</b>
TxDOT Bicycle Tourism Trails Example Network	Groundwater Well Location	Hazardous Material Site	National Wetlands Inventory (NWI) Wetland	100-Year Floodplain
Stream	Cemetery			

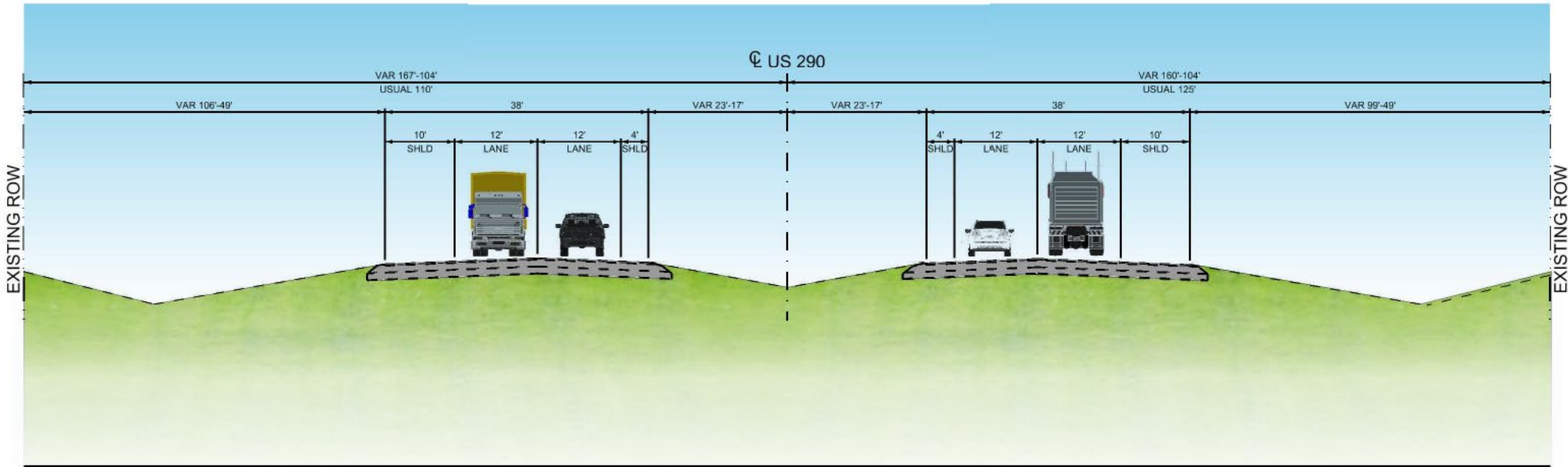
# US 290 Draft Environmental Constraints Map –Enlarged Section at FM 1155



US 290 IMPROVEMENT PROJECT – FM 1155 INTERSECTION UPDATE  
 WASHINGTON & WALLER COUNTIES  
 CSJs: 0114-10-097 & 0114-11-083

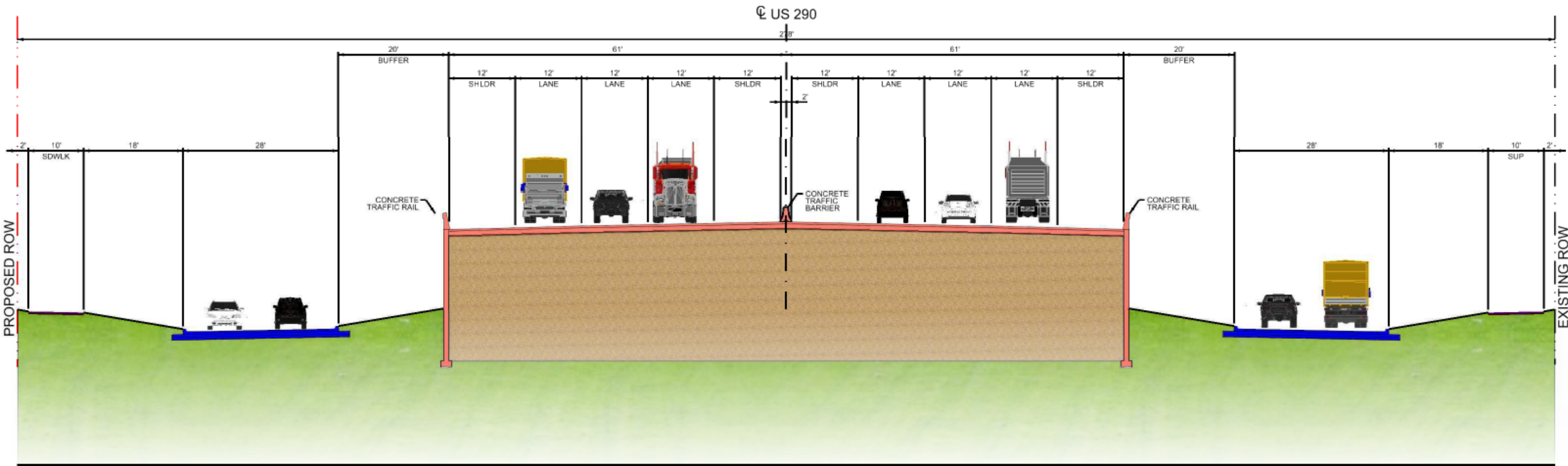
## Legend

- |  |                               |                    |   |  |
|--|-------------------------------|--------------------|---|--|
| Study Area                                   | Electricity Transmission Line | Community Facility | National Register of Historic Places Site     | High-Minority Area                     |
| Project Location                             | Pipeline                      | Museum             | Texas Historical Commission Historical Marker | National Hydrography Dataset Waterbody |
| National Bridge Inventory (NBI) Bridge       | Oil and Gas Well              | Place of Worship   | Hazardous Material Site                       | FEMA Flood Hazard Zones                |
| TxDOT Bicycle Tourism Trails Example Network | Groundwater Well Location     | Cemetery           | Prime Farmland Soil                           | 100-Year Floodplain                    |
| Stream                                       |                               |                    | National Wetlands Inventory (NWI) Wetland     |  |



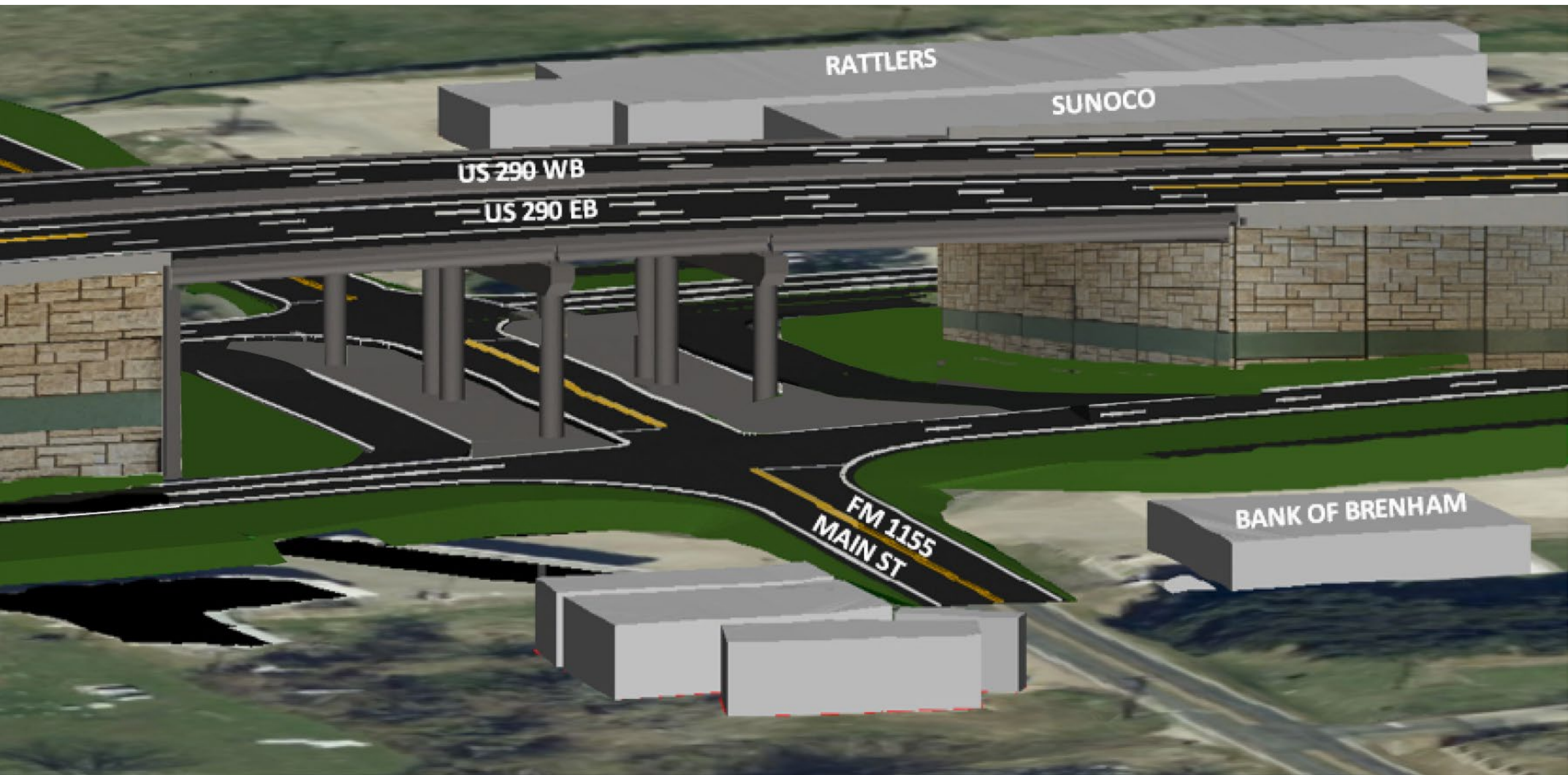
## Existing Typical Section

Washington County



### Proposed Typical Section

Near FM 1155





Virtual Public Meeting – July 21, 2020  
US 290 Improvement Project  
From FM 1371 to SH 6 – Washington & Waller Counties

Continued Evaluation

Virtual Public Meeting – December 7, 2021  
Community Meeting – January 27, 2022 in Chappell Hill  
US 290 at FM 1155 Intersection Evaluation – Washington County

Continued Evaluation

**We Are  
Here** →

Public Meeting – January 17, 2023  
Selected FM 1155 Intersection Alternative  
Short- and Near-Term Intersection Improvements Update

Continued Evaluation

Public Hearing – 2024  
Final Schematic Design  
US 290 Improvement Project

Continued Project Development

Construction – To Be Determined  
(Not anticipated to begin before 2030)