

**2027 - 2030  
RURAL TRANSPORTATION  
IMPROVEMENT PROGRAM**

**Corpus Christi District**

**Welcome!**

Welcome to the Texas Department of Transportation Corpus Christi District Virtual Public Meeting for the Rural Transportation Improvement Program for 2027 through 2030.

We appreciate your interest and thank you for your participation.

This is a pre-recorded presentation made available online on April 16, 2026.

Please note that you can pause the presentation at any time to review a slide in greater detail.

## Purpose of the Rural TIP Virtual Meeting



Learn about the Rural TIP Process



Review Proposed Project Lists



Provide Comments

This presentation will provide an overview of the Rural TIP process, explain how to review proposed project lists by county, and explain the ways to provide comments.

Your comments are an important part of this process. You are encouraged to talk to your neighbors and refer them to TxDOT so they can also make comments and be included in this process.

Let's get started!

**HELP MAKE TEXAS SAFER FOR EVERYONE**

**DRIVE *like a* TEXAN**

Kind. Courteous. Safe.

[DriveLikeATexan.com](http://DriveLikeATexan.com)



Because safety is a priority at TxDOT, we begin each meeting with a safety minute.

Today we will highlight TxDOT's newest safety campaign, *Drive like a Texan*. The campaign serves as a reminder for everyone in Texas to treat each other with a little bit of the kindness, respect, and neighborly spirit we're famous for, especially on the road. By showing courtesy and care behind the wheel the same way we would in person, we can make our roads safer for all.

### **Kind**

It's that simple. Treat others the way you want to be treated. Say thanks by giving a small wave, or just a friendly nod.

### **Courteous**

Courtesy isn't just about being polite in person. Show respect by letting others merge, giving plenty of space, and practicing patience on the road. Small actions save lives.

### **Safe**

The most important part of any journey is arriving safely. Not only do you keep yourself safe, but you also help protect every driver, passenger, biker, and pedestrian sharing the road.

You can learn more about the campaign at the website, [drivelikeatexan.com](http://drivelikeatexan.com), or by scanning the QR code in the bottom right corner.

## District Boundaries



## Corpus Christi District



2027 - 2030 Rural TIP 4

The map of Texas on the left shows the 25 TxDOT districts with the Corpus Christi district shaded in dark blue. The Corpus Christi District includes the 10 counties shown in the map at the right, Aransas, Bee, Goliad, Jim Wells, Karnes, Kleberg, Live Oak, rural Nueces, Refugio, and rural San Patricio counties.

The District also includes the Corpus Christi Metropolitan Planning Organization or MPO. The MPO boundary is the shaded yellow portion of the map. The MPO covers the urbanized areas in Nueces and San Patricio counties. MPO projects are NOT included in the Rural TIP.

For more information about the Corpus Christi MPO and the projects included in their TIP, please visit their website at [www.corpuschristi-mpo.org](http://www.corpuschristi-mpo.org)

## Rural Transportation Improvement Program (Rural TIP)

### THE RURAL TIP

is a list of all added capacity and regionally significant projects to be funded within a TxDOT district during the 4-year program window, including those eligible for federal funding.

Projects can be multimodal and may include studies and/or construction for:



**A Rural TIP project is anticipated to be funded within the 4-year program window.**

**It shows regional agreement (community-region-state) on the need of a project.**

2027 - 2030 Rural TIP 5

The Rural TIP is a list of local projects to be funded in a TxDOT District over the next 4 years. This means that all projects included in the list are expected to be underway within 4 years following project approval.

Projects can be multimodal; which means that they can include preliminary studies and/or construction projects relating to highways, bicycle and pedestrian facilities, transit services, and freight projects.

The Rural TIP is meant to show regional agreement on the need and priority of a transportation project so all parties involved can be sure they are making the best investment for the community. It is also expected to be consistent with the projects and objectives included in the regional Long Range Transportation Plans, to ensure that all agencies are working toward the same goal.

The Rural TIP is a part of the Statewide Transportation Improvement Program (or STIP). Because the program rules are established by Federal law, Transportation projects CANNOT receive federal funding unless they are included in the Rural TIP.

## How the Rural TIP Impacts You

The Rural TIP process includes opportunities to provide input on the priority of major projects that are listed.

Safety and access are important components of every project, big and small. Rural TIP projects in your community may include:

- Road expansions
- Sidewalks
- Bike lanes
- Pavement repairs or maintenance
- New or improved signals
- Turning lanes

**By participating today, you are providing input on more than 200 projects.**

**You know  
your  
community  
best!**

Tell us which  
project  
should come  
first and why

2027 - 2030 Rural TIP 6

It is important for you to participate in the process because funding is intended to address your communities' most immediate needs. By providing comments on the priority of the projects included, you are helping us identify regional priorities. This process helps us be more effective with your money, and ensures funding is invested where it should be.

Safety and access are important components of every project. The Rural TIP not only includes large projects like road expansions overpasses and relief routes, but it also includes local and smaller projects in your community like sidewalks, new or improved signals, pavement repairs and maintenance, bike lanes and turn lanes.

You know your community best! This is your opportunity to provide input on more than 200 projects! Tell us which project should come first and why.

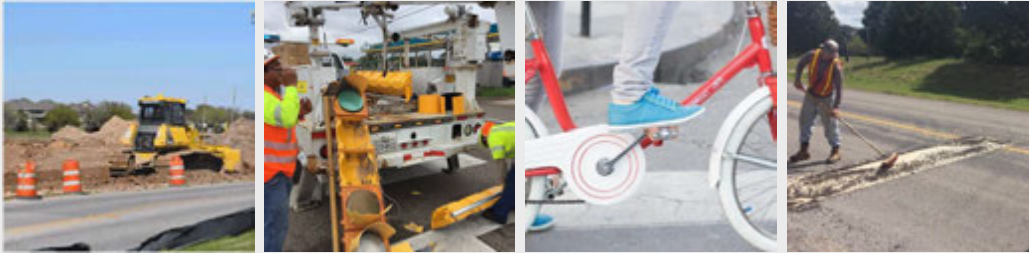
## How Projects are Selected for the Rural TIP

Projects are identified and selected by evaluating existing and future needs.

Consideration is given to:

current conditions and projections, statewide and regional plans,  
public input regarding transportation priorities

For Example:



2027 - 2030 Rural TIP 7

Rural Transportation Organizations, Metropolitan Planning Organizations and local governments are responsible for selecting projects within their boundaries.

TxDOT, through the District office, is responsible for selecting projects relating to the State Transportation System and other National roadways. This includes Interstates, US and State Highways, but most importantly, this can also include the Farm-to-Market and Ranch-to-Market roads you use every day. The projects you will review should respond to existing and future needs. Consideration is given to current conditions and projections while coordinating with statewide and regional plans.

It is our responsibility to provide you with the opportunity to provide input on which projects should be advanced.

## Organizing Projects in the Rural TIP

Selected projects are separated into  
**2**  
Main categories

### 1. Regionally Significant Projects

Big projects = Regionally Significant Projects and stand alone

### 2. Grouped Projects

Smaller projects = Grouped Projects lumped together in one of 11 subcategories

2027 - 2030 Rural TIP 8

Once projects have been defined, they are evaluated according to their scale and classified according to the funding type required. The project's potential impact is also evaluated.

Big projects are categorized as Regionally Significant Projects and are included as stand-alone items. An example might be - *A new bridge over a river.*

To simplify this budgeting and planning process, smaller projects are lumped together into 11 separate subcategories, referred to as Grouped Projects. Grouped projects may include things like landscaping, safety lights, or new bicycle and pedestrian facilities. This grouping practice helps facilitate the federal funding of smaller projects. An example might be - *the pavement repair of an FM road.*

## Introduction to Reviewing Rural TIP Projects

- [RTIP handout - Aransas County](#)
- [RTIP handout - Bee County](#)
- [RTIP handout - Goliad County](#)
- [RTIP handout - Jim Wells County](#)
- [RTIP handout - Karnes County](#)
- [RTIP handout - Kleberg County](#)
- [RTIP handout - Live Oak County](#)
- [RTIP handout - Nueces County](#)
- [RTIP handout - Refugio County](#)
- [RTIP handout - San Patricio County](#)



2027 - 2030 Rural TIP 9

Projects included in the 2027-2030 Rural TIP for the Corpus Christi District are listed by county at the bottom of the webpage where you located this presentation. On the left you see a sample of the county list. Each county packet is a handout set including a county map and project list. You can review each of the counties you are interested in. The map on the right shows you the location of each county within the Corpus Christi TxDOT District.

At the conclusion of this presentation, your next step is to explore the projects you believe may have the greatest impact in your area. TxDOT seeks your input on the projects and provides a number of ways for you to make comments.

Now we will provide a brief overview of the county maps and lists to help you with your project review.

As an example, we will review the projects being presented for San Patricio County.

## EXAMPLE Rural TIP San Patricio County Projects



2027 - 2030 Rural TIP 10

This example map allows us to look at a few significant components of the county-by-county packets.

In our sample from San Patricio County, you will see part of the boundary of the Corpus Christi MPO with the pink border and shading. The MPO includes portions of San Patricio and Nueces Counties.

The purpose of this meeting is to focus on the rural areas, but the MPO TIP projects within these counties are included in the county packet for your information. Please visit [www.corpuschristi-mpo.org](http://www.corpuschristi-mpo.org) for more information about the Corpus Christi MPO's TIP.

Please also note the legend in the bottom left corner of the screen.

## County Project Legend Sample



2027 - 2030 Rural TIP 11

Each county map will have a legend. Projects are broken up into the 4 fiscal years included in the Rural TIP. A fiscal year runs from September thru August of said year. For example, fiscal year 2027 runs from September 2026 through August 2027.

All projects planned for bidding in fiscal year 2027 are shown in green. Projects in fiscal year 2028 are shown in red. Projects in fiscal year 2029 are shown in grey with X's, and all projects planned in fiscal year 2030 are shown in blue.

Project locations where construction is currently underway, or will begin soon, are featured with a dual color line. For more information on these projects, visit the Project Tracker on [txdot.gov](http://txdot.gov).

## EXAMPLE San Patricio County Projects



2027 - 2030 Rural TIP 12

Going back to our example map, we see the legend allows us to understand the fiscal year of the projects. Another important feature of the map is the numbering system.

For each county, the number of projects will differ, but the lists in each county packet will provide additional details. Let's look at a sample list.

## EXAMPLE Table of San Patricio County Projects

### Regionally Significant Projects

Key	CSJ	Highway	Limits From	Limits To	Short Description	Construction Estimate (\$)	Let Date
1	0371-04-062	US 77	CHILTIPIIN CREEK BR (CONTROL BREAK)	BUSINESS NORTH (SINTON)	Convert Non-Freeway	\$56,008,600	January 2027
2	0372-01-101	US 77	BUSINESS SOUTH (SINTON)	CHILTIPIIN CREEK BR (CONTROL BREAK)	Convert Non-Freeway	\$112,017,200	January 2027

### Corpus Christi MPO Regionally Significant Projects (informational)

Key	CSJ	Highway	Limits From	Limits To	Short Description	Construction Estimate (\$)	Let Date
3	0180-10-082	SH 361	AT SH35 INTERCHANGE	.15 MI SE ON SH 361	Interchange Improvement	\$78,322,675	April 2028
4	0180-06-118	SH 35	FM 3284	.23 MI N OF SH 361	Interchange Improvement	\$62,694,207	April 2028
5	0180-11-016	SS 202	Ave H in Gregory	SH 35 northbound frontage rd	Infrastructure Improvements	\$2,741,180	April 2028

2027 - 2030 Rural TIP 13

The first table shows the details of Regionally Significant Projects. A project number is provided in the CSJ column, and the Highway location is also provided.

Items you may be interested in are: Where does the project begin and end? This is listed as "Limits from, and Limits to." What type of work will be done is found in the short description. A Construction Estimate is provided and the Let Date shows the anticipated date when a contractor is identified for construction.

In this example, the second table lists the Corpus Christi MPO Regionally Significant Projects for your information. MPO projects are provided as applicable in the San Patricio and Nueces County packets.

## EXAMPLE San Patricio County Grouped Projects

### Grouped Projects (informational)

Key	CSJ	Highway	Limits From	Limits To	Short Description	Construction Estimate (\$)	Let Date
6	0738-03-035	FM 136	CONTROL SECTION	SH 188	Seal Coat	\$29,661	October 2026
7	1209-02-023	FM 631	US 181	SH 188	Seal Coat	\$344,281	October 2026
8	1209-01-035	FM 893	FM 1074	FM 631	Seal Coat	\$377,954	October 2026
9	1559-01-027	FM 1074	FM 1944	FM 893	Seal Coat	\$448,342	October 2026

2027 - 2030 Rural TIP 14

The maps and tables also provide information about Grouped Projects, the smaller projects that have been grouped based on similar subcategories.

By looking at the tables along with the maps, you can review all projects being presented in the 2027-2030 Rural TIP, become informed, and provide input.

## Funding

**The Rural TIP is a fiscally constrained list of projects that functions as a budgeting tool for our district.**

Funds can come from:

- **Federal Government**
  - **Majority through** the Federal Highway and Transit Administrations
- **State**
  - **Majority through TxDOT's** Unified Transportation Program funding categories
- **Region**
- **Local**

2027 - 2030 Rural TIP 15

The Rural TIP functions as a budget list for the District. Therefore, it is fiscally constrained. Similar to the budget of a household, the Rural TIP must be realistic about the amount of money available to covers all the needs. Frequently we identify more improvements than we have money to implement. This means prioritizing according to those items that are most necessary.

We've discussed the project lists, but where is the money coming from? Funds can come from multiple sources:

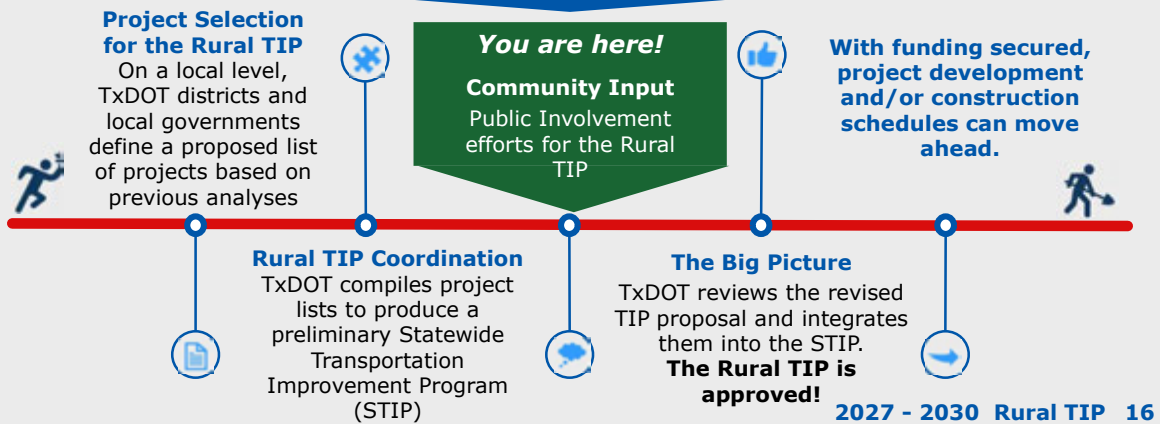
First, The Federal Government, through the establishment of the Infrastructure Investment and Jobs Act (IIJA), the federal government allocates these funds through the processes established by the Federal Highway and Transit Administrations.

Second, TxDOT, like the Federal Government also allocates a section of our budget for these projects through the Unified Transportation Program's 12 funding categories.

Finally, regional entities will also allocate funding to certain transportation projects. Local governments would need to assess whether matching funds are required.

## Next Steps

### In the Rural TIP Process



This timeline illustrates the Rural TIP process and where we are right now.

Projects have been selected and listed based on analyses. The list has been provided as a preliminary Statewide Transportation Improvement Program or STIP and is now ready for your input.

Once comments have been collected and considered, if necessary, the Corpus Christi District can provide a revised Rural TIP for approval and integration into the Statewide document.

The STIP is an accumulation of all 24 district's Rural TIPs, and the 24 Metropolitan Planning Organization's TIPs, and additional Statewide Programs, for example: Texas Park and Wildlife Program, Federal Land, Tribal Projects, Statewide Transit, etc. The timeline shows where the Rural TIP process fits into this larger effort. Once the STIP is approved by the Federal government, projects are funded and are one step closer to development and construction.

## How to Submit Comments



### Comment Form

Download the comment form available on this meeting page, complete and mail to TxDOT's Corpus Christi District.



### E-mail

Submit a comment to:  
**Amanda.Longoria@txdot.gov**  
Subject: Rural TIP Revision



### Online Form

Click the online comment form provided on this meeting page.



### Mail

Submit a comment by mail to:  
**TxDOT Corpus Christi District Office**  
**c/o Amanda Longoria**  
**1701 S. Padre Island Dr.**  
**Corpus Christi, TX 78416**

**Please submit or  
postmark  
comments by:**

**Tuesday,  
April 28, 2026**

**2027 - 2030 Rural TIP 17**

Your comments are important to TxDOT, and you can submit them in the following ways:

- Visit TxDOT.gov, keyword search "2027 Corpus Christi" to submit your comments using the online comment form. That link is on the bottom of the page where you found this presentation.
- You may email your comments to [Amanda.Longoria@txdot.gov](mailto:Amanda.Longoria@txdot.gov)
- Or you may mail your comments to our office at TxDOT Corpus Christi District Office, care of Amanda Longoria, 1701 South Padre Island Drive, Corpus Christi, TX 78416.

To be included in the official open house record, all comments must be received or postmarked by Tuesday, April 28, 2026.



# Thank You

This concludes our presentation.

You can rewatch any portion of this video presentation at any time. You may also download, print, and share the individual maps and project lists for each county from the meeting page.