



# WELCOME Open House

---

## SH 35 at SH 361/Spur 202 Interchange

San Patricio County, Texas  
CSJ: 0180-06-118, 0180-10-082, 0180-11-016

**National Environmental Policy Act Assignment to TxDOT:** The environmental review, consultation, and other actions required by applicable Federal environmental laws for this project are being, or have been, carried-out by TxDOT pursuant to 23 U.S.C. 327 and a Memorandum of Understanding dated December 9, 2019 and executed by FHWA and TxDOT.

Sept. 28, 2023

Welcome to the Texas Department of Transportation Corpus Christi District pre-recorded open house presentation for the proposed SH 35 at SH 361/Spur 202 interchange project in San Patricio County, Texas. We appreciate your interest in this project and thank you for your participation. This is a pre-recorded presentation made available online on Thursday, Sept. 28, 2023, by 4:30 p.m.

The National Environmental Policy Act review and approval process applies to this project. The environmental review, consultation, and other actions required by applicable Federal environmental laws for this project are being, or have been, carried-out by TxDOT pursuant to 23 U.S.C. 327 and a Memorandum of Understanding dated December 9, 2019 and executed by FHWA and TxDOT.

End the Streak 

**HELP**  
**#EndTheStreakTX**  
End the streak of daily deaths on Texas roadways.

**TxDOT.gov** (Keyword: #EndTheStreakTX) **#EndTheStreakTX Toolkit**

SH 35 at SH 361/Spur 202 Interchange Sept. 28, 2023 **2**

Because safety is a priority at TxDOT, we begin each meeting with a safety minute. Today we will highlight TxDOT’s End The Streak campaign. The last deathless day on Texas roadways was November 7, 2000. That means for nearly 23 years, at least one person has died every single day. We all have a part to play in changing that. This is a reminder to End the Streak of deaths on Texas roadways. Texans can play a major role in ending fatal crashes with a few simple driving habits: wear seatbelts, drive the speed limit, put away the phone and other distractions, and never drive under the influence of alcohol or drugs. Please do your part and share this message with your friends and family.

## Purpose of this open house



**Learn about the project**

**Review the proposed improvements**

**Provide comments**

SH 35 at SH 361/Spur 202 Interchange

Sept. 28, 2023

3

This presentation will provide an overview of the SH 35 at SH 361/Spur 202 interchange, a review of the proposed improvements, and how you can provide input.

At the end of the presentation, there are instructions on how to submit questions and comments. To be included in the official open house record, comments must be received on or before Monday, Oct. 16, 2023.

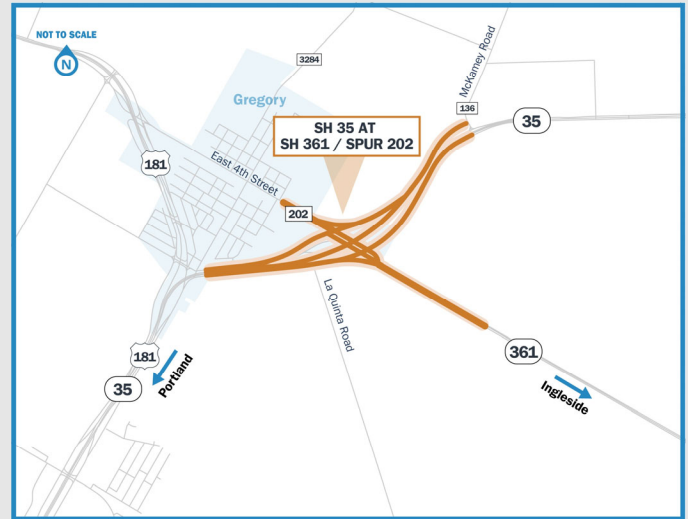
Your comments are an important part of this process, and the project team will consider them for design refinements where feasible. You are encouraged to talk to your neighbors and refer them to TxDOT so they can also make comments and be included in this process.

Let's get started!

## Project details

### SH 35 at SH 361/Spur 202 Interchange

- Feasibility study in 2021 identified project goals
- New interchange design proposed
- Minimal right-of-way would be needed



SH 35 at SH 361/Spur 202 Interchange

Sept. 28, 2023

4

This project is located on SH 35 at the intersection of SH 361 and Spur 202 (also known as East 4th Street) in San Patricio County.

A feasibility study completed in 2021 identified project goals and recommended a new interchange design. This proposed interchange design will require a minimal amount of additional right of way.

## Project goals



### TxDOT is working to identify a long-term solution that will:



Improve safety



Reduce traffic congestion



Reduce delays at railroad crossings



Improve connectivity to SH 35 for hurricane evacuation

SH 35 at SH 361/Spur 202 Interchange

Sept. 28, 2023

5

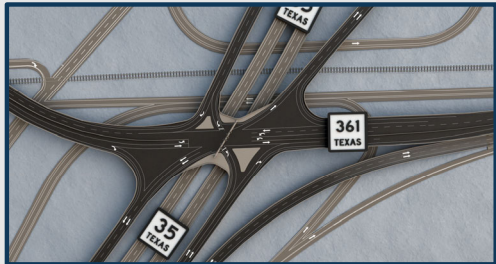
The goals of this project are to:

- Improve safety
- Reduce traffic congestion
- Reduce delays at railroad crossings and
- Improve connectivity to SH 35 in the event of a hurricane evacuation

**Proposed design**

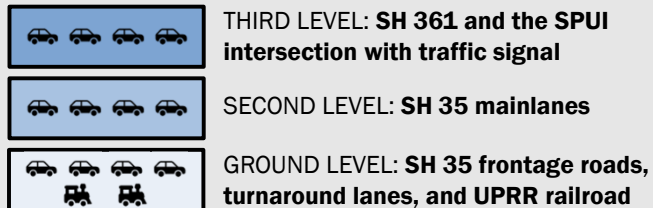


TxDOT is proposing to construct an elevated **Single Point Urban Interchange (SPUI)** to connect SH 35, SH 361, and Spur 202 located in Gregory.



Preliminary - subject to change

**Proposed SPUI interchange**



**Additional proposed improvements:**

Adding continuous flow for those turning right

Eliminating two railroad crossings at ground level

Providing wider turning lanes

Reconstructing ramps

Extending frontage roads

So what is TxDOT proposing? As a result of data analysis and public input from the feasibility study, TxDOT’s proposed design includes constructing an elevated Single Point Urban Interchange, or SPUI, to connect SH 35, SH 361, and Spur 202 in Gregory.

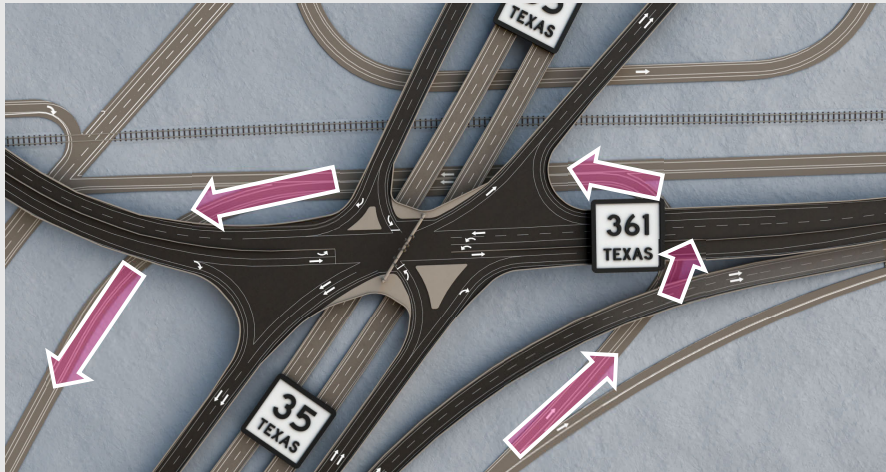
The graphic you see here is a first introduction to this SPUI design. In a moment, we will share a visualization of how drivers would move through the proposed intersection.

One important feature of this design is that there are three levels, and on the top level there are traffic signals.

Proposed improvements also include continuous flow for those turning right, eliminating the need for some traffic to cross the railroad, providing wider turning lanes, reconstructing exit and entrance ramps, and extending frontage roads.

Now that we have a basic idea of the proposed project, let’s see the visualization and try to bring the concept to life.

### La Quinta Road to Portland



**For drivers joining SH 35 from La Quinta Road, who wish to turnaround and head to Portland:**

The traffic path remains the same but is separated from SH 361 traffic which will save travel time and reduce the conflict points of merging traffic.

Preliminary - subject to change

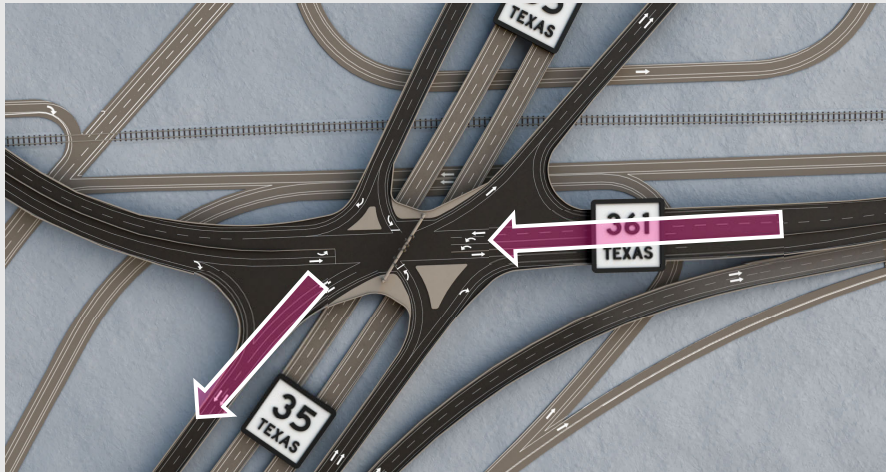


GROUND LEVEL: SH 35 frontage roads, turnaround lanes, and UPRR railroad

Now let's take a closer look at how the design benefits some of the most traveled paths.

First, let's consider drivers who may be leaving work on La Quinta Road and want to head toward Portland, the path remains the same, but is now separated from SH 361 traffic. This results in saving travel time and reducing the conflict points of merging traffic.

### Ingleside to Portland



#### For drivers heading from Ingleside to Portland:

People traveling from SH 361, headed toward Portland, will enter the new upper-level interchange with two left-turn lanes at a traffic signal.

This allows separation from SH 35 turnaround traffic which will save time and reduce conflict points of merging traffic.

Preliminary - subject to change

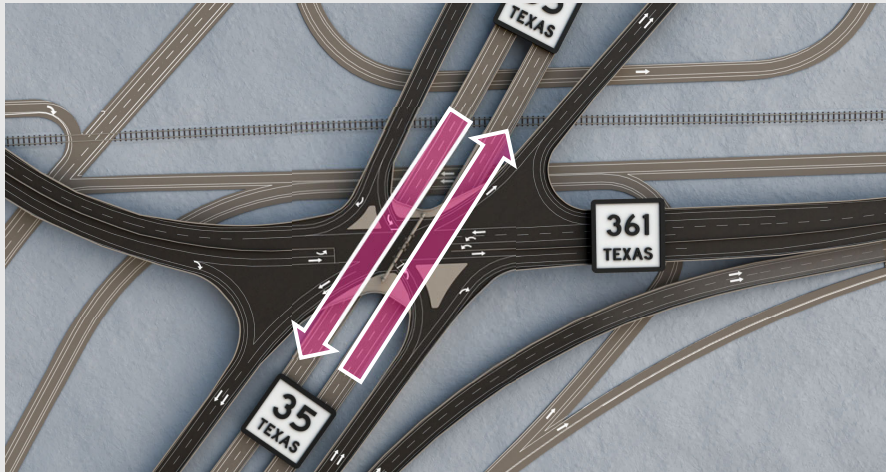


THIRD LEVEL: SH 361 and the SPUI intersection with traffic signal

Our next example is traffic from Ingleside to Portland. These drivers are traveling from SH 361 and will enter the upper level of the interchange. There will be two left-turn lanes at a traffic signal on this upper level. This path allows SH 361 traffic to be separated from SH 35 turnaround traffic. This will save time and reduce the conflict points of merging traffic.



### Portland to Rockport



**For drivers going from Portland to Rockport, or Rockport to Portland:**

This path remains unchanged with two main lanes in each direction going over the railroad on the second level.

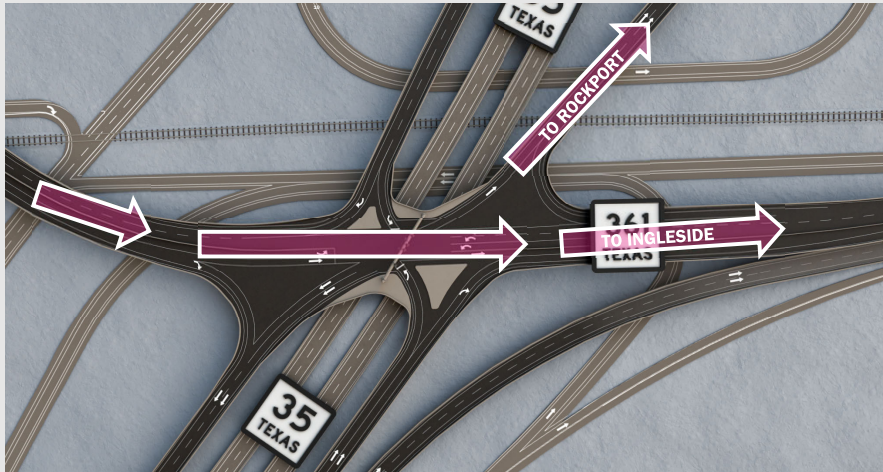
Preliminary - subject to change



SECOND LEVEL: SH 35 mainlanes

Now let's see the path for our through-drivers. These are the folks going from Portland to Rockport or Rockport to Portland. This path remains unchanged and will still have two main lanes in each direction. This is on the second level, so it is over the railroad lines.

Sinton/Gregory to Ingleside/Rockport



**For drivers in Sinton/Gregory heading to Ingleside or Rockport:**

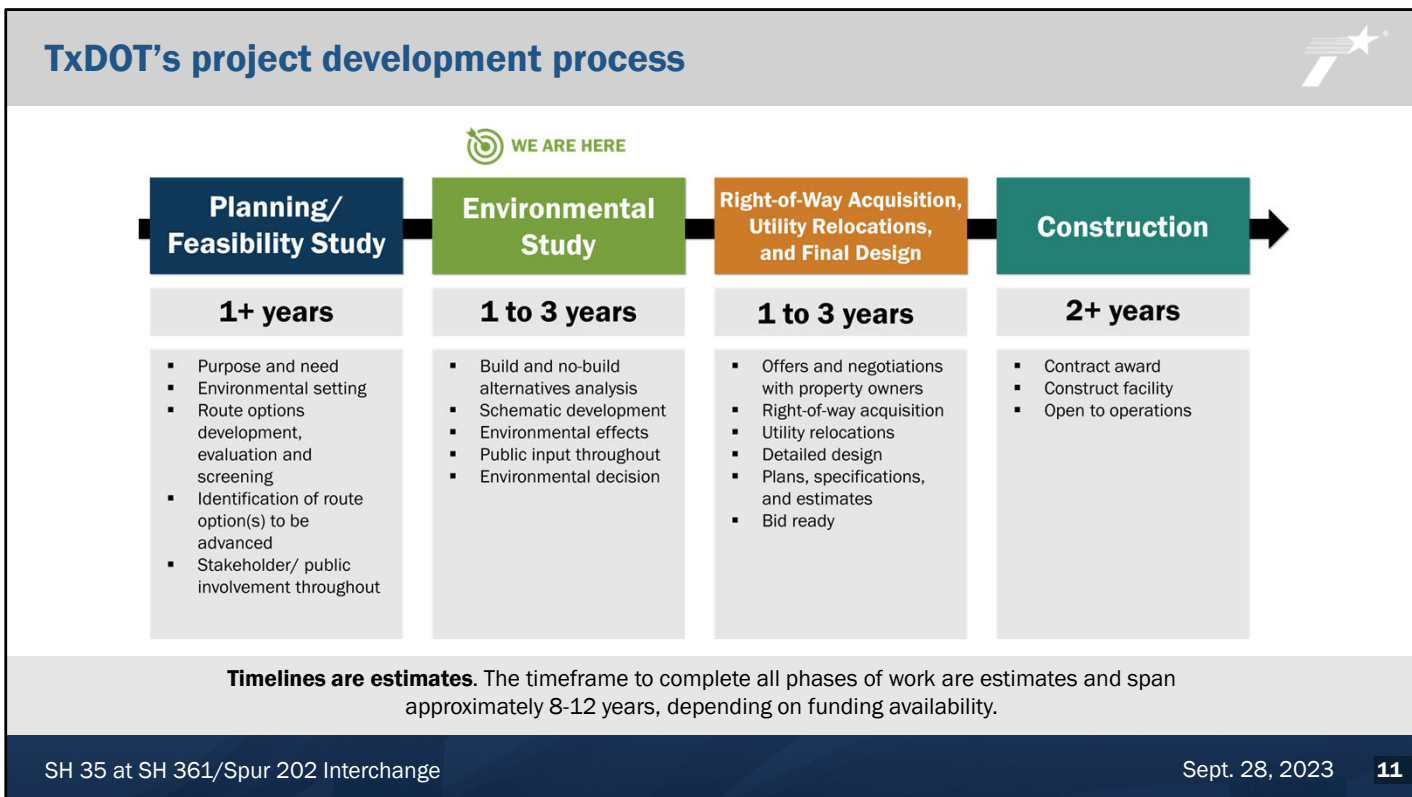
This connection elevates drivers to the upper-level interchange and avoids the railroad. Rockport drivers utilize a traffic signal light to go left onto SH 35, and Ingleside drivers utilize the traffic signal to go straight onto SH 361.

Preliminary - subject to change



THIRD LEVEL: SH 361 and the SPUI intersection with traffic signal

Our last example is for drivers going from Sinton or Gregory to either Rockport or Ingleside. In this case, drivers will enter the upper level of the interchange. The drivers going to Rockport will utilize the traffic signal to go left onto SH 35. The drivers headed to Ingleside will utilize the signal to go straight onto SH 361 and avoid crossing the railroad tracks.

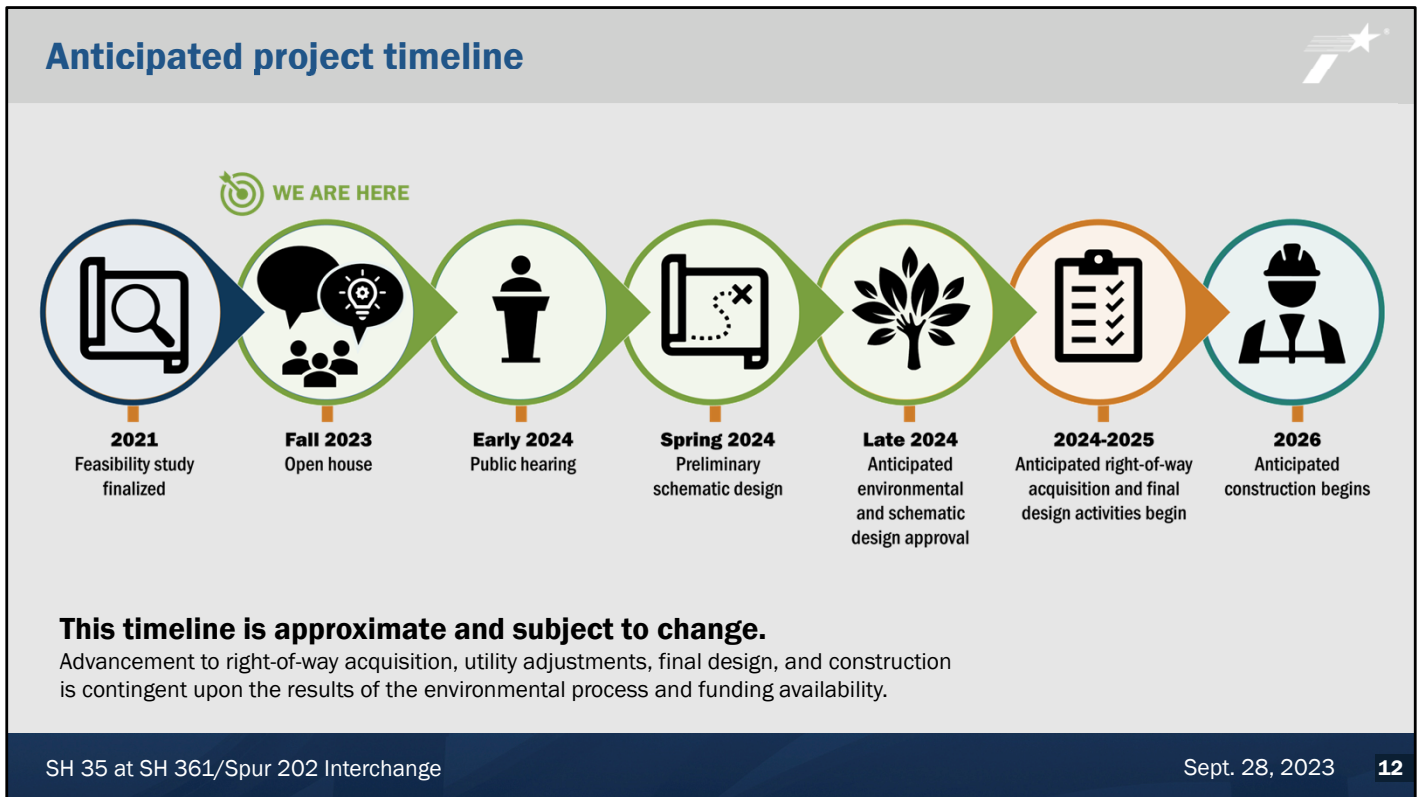


Let's now touch on TxDOT's process for projects. TxDOT's project development process consists of four phases, each including public involvement.

Specific to the SH 35 at SH 361/Spur 202 interchange, TxDOT began with the planning phase in 2019. This effort included a feasibility study and alternatives analysis, which was finalized in 2021. The project is currently in the environmental and schematic design phase which includes public involvement. A public hearing is currently planned for early 2024. The environmental process is anticipated to be complete in late 2024.

If the decision is made to move forward with the project at the end of the environmental study, the next phase involves right-of-way acquisition, utility adjustments and final design. This phase is anticipated to begin next year and take approximately one year to complete. During this time, offers and negotiations would occur with property owners to acquire needed right of way. As noted earlier, minimal additional right of way would be needed for the current proposed design.

Advancement from phase to phase is contingent upon the outcome of the previous phase and funding availability.



Looking at the project process as a detailed timeline, we see that TxDOT anticipates construction could begin as early as 2026, if funding is available.

During the current environmental study phase, public involvement is crucial. As the project progresses through development and implementation and is further refined, TxDOT will continue to engage the public and request input.

## How to submit comments



### Comment Form

Submit a comment form online or in-person! You can access the online comment form by scanning the QR code or visit [www.TxDOT.gov](http://www.TxDOT.gov) and keyword search "SH 35 at SH 361."



### E-mail

Submit a comment to:  
Kimberly.Amy@txdot.gov



### Mail

Submit a comment by mail to:  
TxDOT Corpus Christi District Office  
c/o Kimberly Amy  
1701 S. Padre Island Drive  
Corpus Christi, Texas 78416

**To be included in the official open house summary, comments must be received or postmarked by Monday, Oct. 16, 2023.**

**Scan the QR code to the right to access the virtual comment form!**

**Visit [www.TxDOT.gov](http://www.TxDOT.gov) and keyword search "SH 35 at SH 361."**



Online Comment Form

SH 35 at SH 361/Spur 202 Interchange

Sept. 28, 2023

13

Your comments are important to TxDOT and you can submit them in the following ways:

- At the in-person open house, please provide written comments on the forms provided.
- Visit [TxDOT.gov](http://TxDOT.gov), keyword search "SH 35 at SH 361," to submit your comments on the online comment form.
- You may email your comments to [Kimberly.Amy@txdot.gov](mailto:Kimberly.Amy@txdot.gov)
- Or, you may mail your comments to the address noted on the screen.

Questions or comments may be submitted to TxDOT and the project team at any time during project development. However, to be included in the official open house record, all comments must be received or postmarked by Monday, Oct. 16, 2023. Documentation of this open house will be included in the project record and will be posted on the project's webpage on [txdot.gov](http://txdot.gov), keyword search "SH 35 at SH 361."

If you have questions at any point during the project development process, please contact Kimberly Amy by phone or email during regular office hours.

Thank you for participating in this virtual public meeting. This concludes our presentation.