

YOU'RE INVITED!

# Farm-to-Market (FM) 6 Public Hearing

Thursday, May 9, 2024

5:30 PM to 7:30 PM (Open House)

Presentation at 6 p.m.

Leland Edge Middle School Cafeteria  
620 North FM 1138, Nevada, TX 75173

## IN-PERSON PUBLIC HEARING

The in-person hearing will be held in an open house format with one formal presentation at 6 p.m. Representatives from TxDOT and project consultants will be available to answer questions about the project.

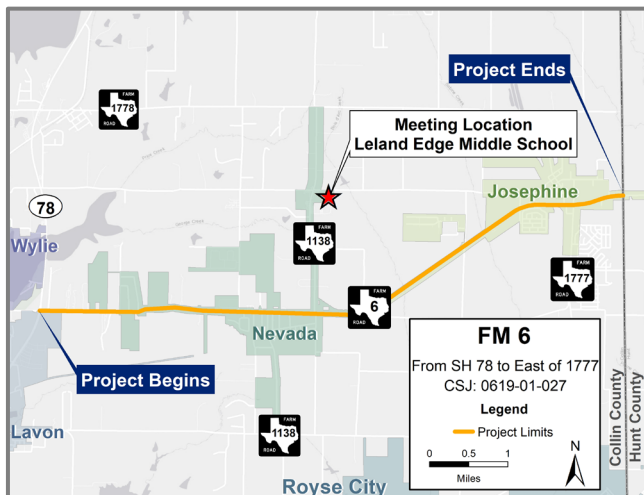
## VIRTUAL PUBLIC HEARING

The Virtual Public Hearing can be viewed at any time beginning Thursday, May 9, 2024, at 5:30 pm through Friday, May 24, 2024, at 11:59 pm. **The same information will be available at the in-person and virtual hearing.** You can access the Virtual Public Hearing by scanning the QR code on this page using a phone or tablet or visiting: [www.keepitmovingdallas.com/projects/fm-roads/fm6](http://www.keepitmovingdallas.com/projects/fm-roads/fm6).

## DIRECTIONS TO THE IN-PERSON PUBLIC HEARING


From the South: Head North on FM 1138 from FM 6 and Leland Edge Middle School will be on your right.


From the North: Head South on FM 1138 from CR 596 and Leland Edge Middle School will be on your left.



TxDOT.gov | Keyword(s): "FM 6"

## Questions or Comments

 Kibru Andargie, P.E.

 214.320.6244

 [Kibru.Andargie@TxDOT.gov](mailto:Kibru.Andargie@TxDOT.gov)



 SCAN ME