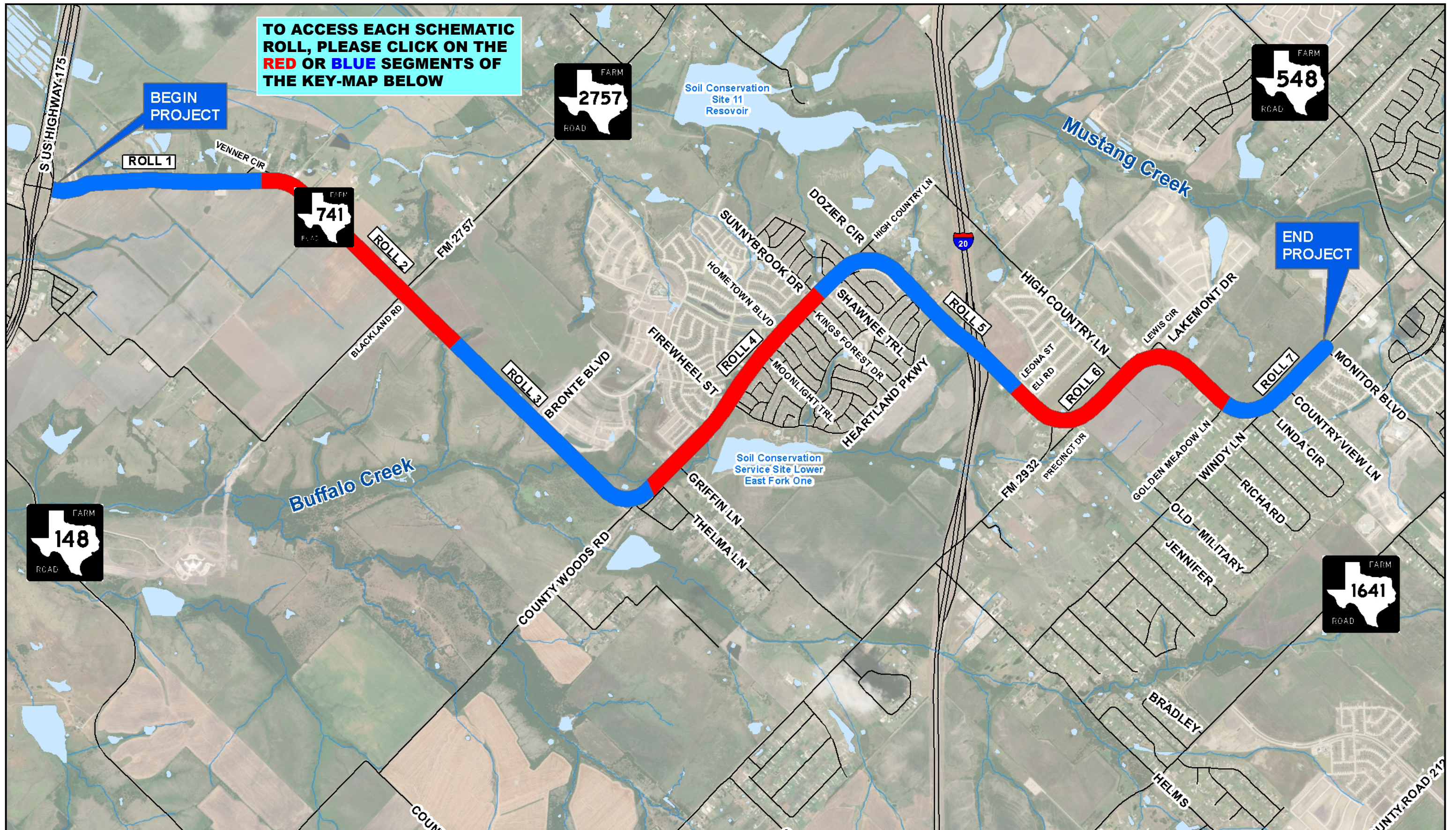


TO ACCESS EACH SCHEMATIC ROLL, PLEASE CLICK ON THE RED OR BLUE SEGMENTS OF THE KEY-MAP BELOW



PRELIMINARY
 THESE DOCUMENTS ARE FOR INTERIM REVIEW AND ARE NOT INTENDED FOR REGULATORY APPROVAL, PERMIT, BIDDING OR CONSTRUCTION PURPOSES.

SCHEMATIC ROLL INDEX
FARM-TO-MARKET ROAD (FM) 741 FROM US HIGHWAY 175 (US 175) TO FM 548
 CSJ: 1092-01-021
 KAUFMAN COUNTY - TXDOT DALLAS DISTRICT

Date: November 17, 2020

