

SH 34 Feasibility Study Kaufman County, Texas

Virtual Public Meeting

September 24, 2020

CSJ 0173-04-056

Virtual Public Meeting in Response to Public Health



TxDOT changed the in-person public meeting to a virtual format only, in response to the COVID-19 outbreak.

The virtual public meeting and TxDOT website will provide the same information as an in-person meeting would have.

SHARE FACTS ABOUT COVID-19

Know the facts about coronavirus disease 2019 (COVID-19) and help stop the spread of rumors.

FACT 1 Diseases can make anyone sick regardless of their race or ethnicity.

Fear and anxiety about COVID-19 can cause people to avoid or reject others even though they are not at risk for spreading the virus.

FACT 2 For most people, the immediate risk of becoming seriously ill from the virus that causes COVID-19 is thought to be low.

Older adults and people of any age who have serious underlying medical conditions may be at higher risk for more serious complications from COVID-19.

FACT 3 Someone who has completed quarantine or has been released from isolation does not pose a risk of infection to other people.

For up-to-date information, visit CDC's coronavirus disease 2019 web page.

FACT 4 There are simple things you can do to help keep yourself and others healthy.

- Wash your hands often with soap and water for at least 20 seconds, especially after blowing your nose, coughing, or sneezing; going to the bathroom; and before eating or preparing food.
- Avoid touching your eyes, nose, and mouth with unwashed hands.
- Stay home when you are sick.
- Cover your cough or sneeze with a tissue, then throw the tissue in the trash.

FACT 5 You can help stop COVID-19 by knowing the signs and symptoms:

- Fever
- Cough
- Shortness of breath


Seek medical advice if you

- Develop symptoms

AND

- Have been in close contact with a person known to have COVID-19 or if you live in or have recently been in an area with ongoing spread of COVID-19.

[cdc.gov/COVID-19](https://www.cdc.gov/COVID-19)



©2020 CDC



- Provide background information on the purpose of the study
- Share analysis of different alignments considered
- Present the preferred alignment alternative
- Share next steps
- Collect, document, and analyze public comments



Feasibility Study Process



SH 34

From FM 2578 in Terrell to SH 243 in Kaufman

Project Purpose:

- Improve safety and mobility on SH 34
- Address traffic flow concerns due to the growth of Terrell, Kaufman, and surrounding cities



83% Growth

**Projected Population Growth
for Kaufman County By 2040**

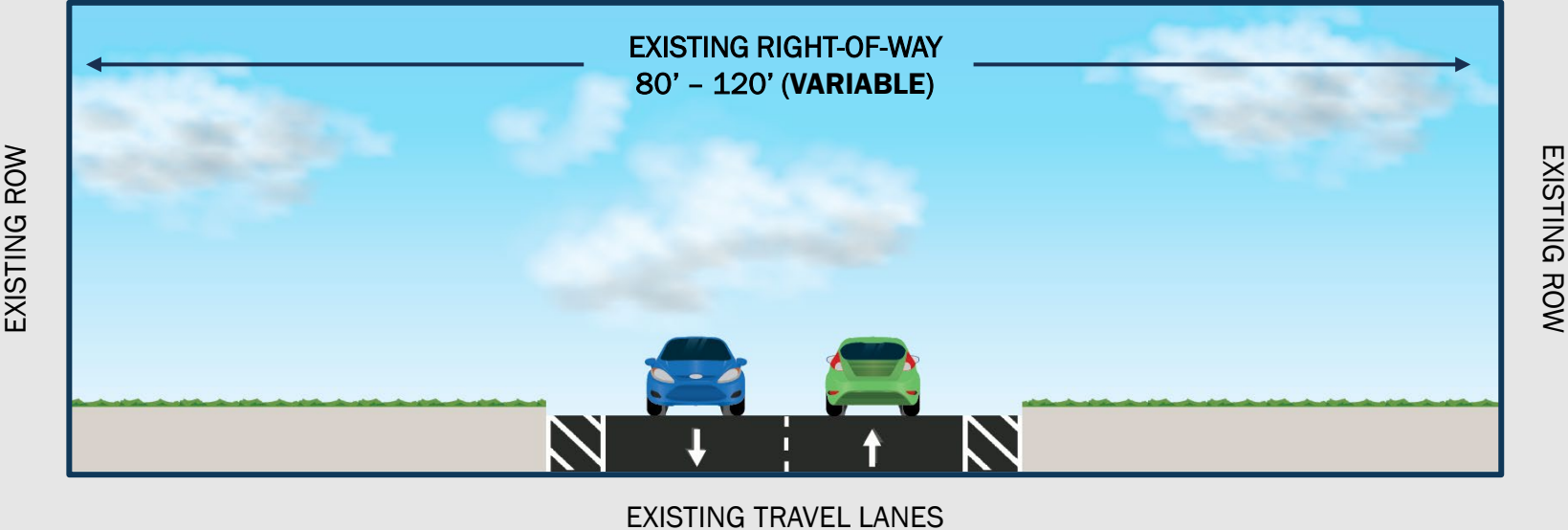


25,000

Vehicles per Day by 2045



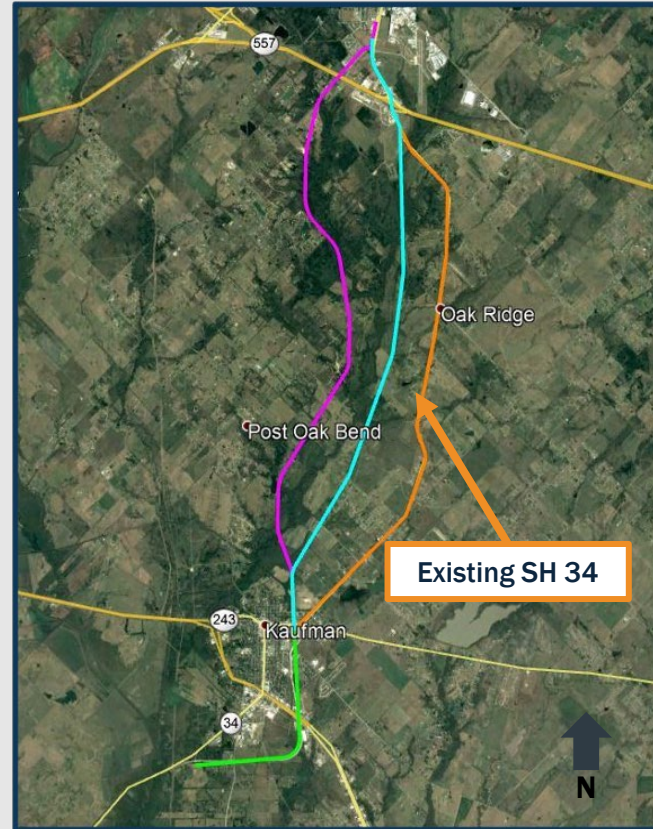
Existing SH 34 Roadway Configuration





1996

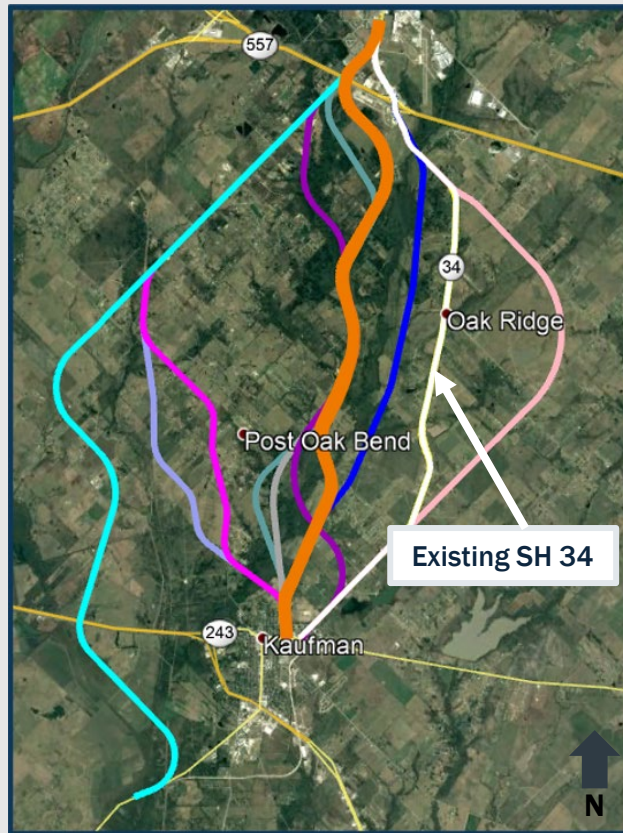
TxDOT Feasibility Study:
4 alternatives evaluated





2006

TxDOT Feasibility Study:
11 alternatives evaluated

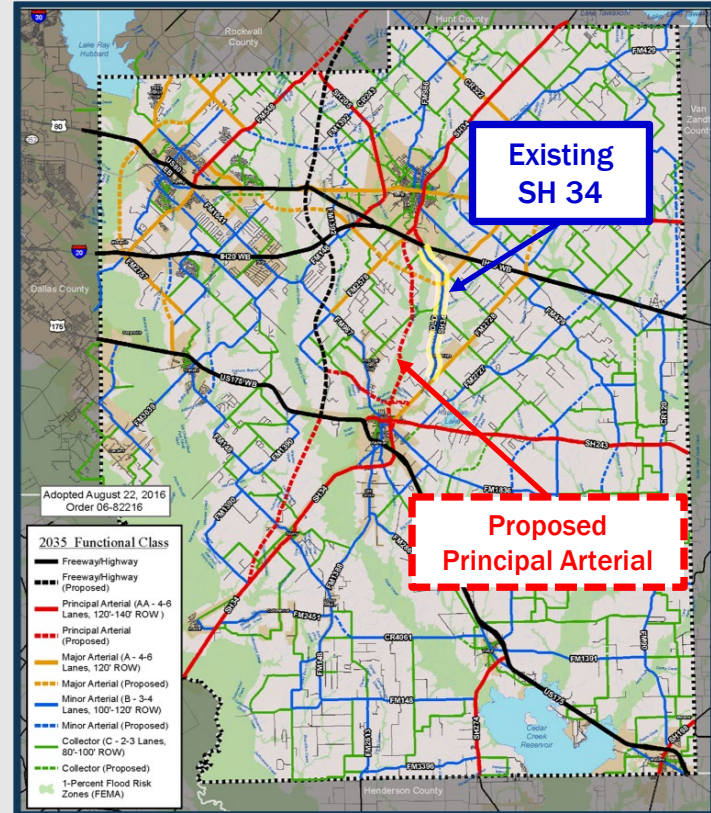




2016

Kaufman County 2035 Thoroughfare Plan

- SH 34 is a Principal Arterial (in blue)
- Identifies need for an additional Proposed Principal Arterial to the west adjacent of existing SH 34 (dotted red)
- Same route as the 2006 Feasibility Study selected alternative





8 Alternatives Studied

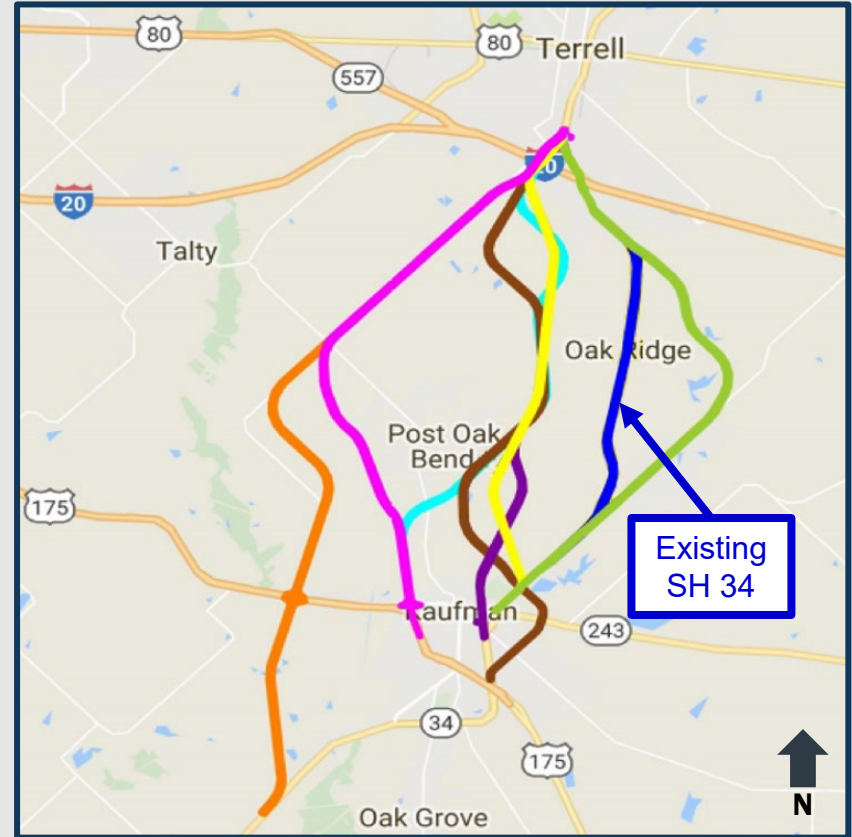
- 7 New location
- 1 Existing SH 34
- Rural high-speed configuration
 - Wide median with ditch
 - 70 mph design speed

Stakeholder Meeting – Spring 2018

- Kaufman County, NCTCOG, local jurisdictions, and independent school districts

Public Meeting – Summer 2018

- 183 Attendees
- 57 Comments Received





Evaluation Matrix

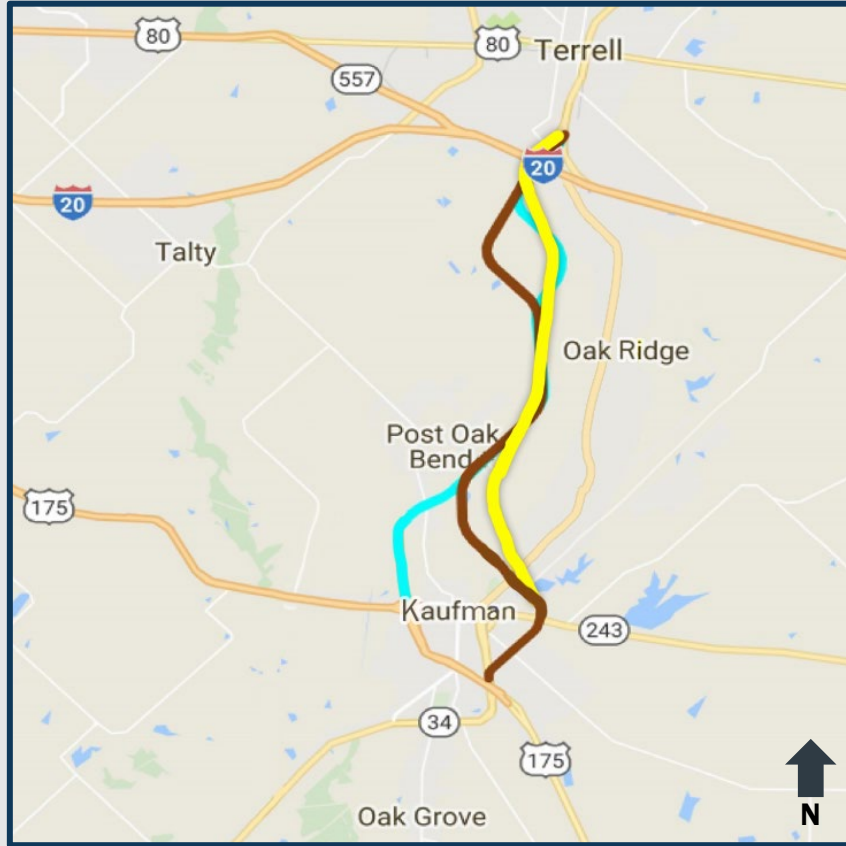
Criteria	Orange	Pink	Light Blue	Brown	Purple	Yellow	Blue	Green
Alignment Length (miles)	14.86	11.11	10.75	11.89	9.66	9.34	8.68	9.99
Estimated ROW Acquisition (ac)	365.27	266.33	292.48	308.98	263.77	233.26	173.13	217.50
Total # of Parcels	109	74	38	63	74	68	142	119
Displaced Residential	20	16	0	0	9	15	63	46
Displaced Commercial	1	1	0	0	10	2	11	8
Impacted Commercial (not displaced)	1	2	1	4	0	5	8	6
# of Homes within 500'	62	52	13	145	69	112	217	193
Archeological Sites	0	0	1	1	0	0	0	0
Stream Crossings	4	4	3	4	3	3	3	3
Hazmat Sites	0	0	0	0	1	1	3	1
Cemeteries (ac)	0	0	0	0	0.76	0	0	0
Construction Cost (\$M)	\$ 133.8	\$ 108	\$103.5	\$ 99	\$ 74.8	\$ 74.6	\$ 80	\$ 88.1
Estimated ROW Costs (\$M)	\$ 9.8	\$ 8	\$ 3.2	\$ 3	\$ 6.7	\$ 5.3	\$ 18.4	\$ 15.1
Total Project Cost (\$M)	\$ 143.6	\$116.1	\$106.7	\$ 102.1	\$ 81.5	\$ 79.9	\$ 98.4	\$ 103.2



Evaluation Matrix

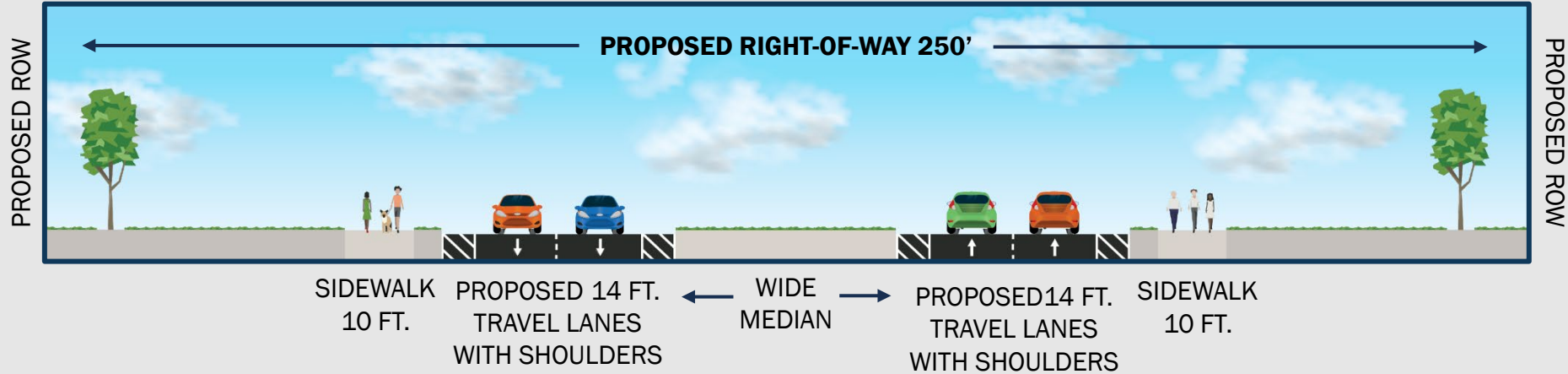
Criteria	Light Blue	Brown	Yellow
Alignment Length (miles)	10.75	11.89	9.34
Estimated ROW Acquisition (ac)	292.48	308.98	233.26
Total # of Parcels	38	63	68
Displaced Residential	0	0	15
Displaced Commercial	0	0	2
Impacted Commercial (not displaced)	1	4	5
# of Homes within 500'	13	145	112
Archeological Sites	1	1	0
Stream Crossings	3	4	3
Hazmat Sites	0	0	1
Cemeteries (ac)	0	0	0
Construction Cost (\$M)	\$103.5	\$ 99	\$ 74.6
Estimated ROW Costs (\$M)	\$ 3.2	\$ 3	\$ 5.3
Total Project Cost (\$M)	\$106.7	\$ 102.1	\$ 79.9

Alignment Alternatives





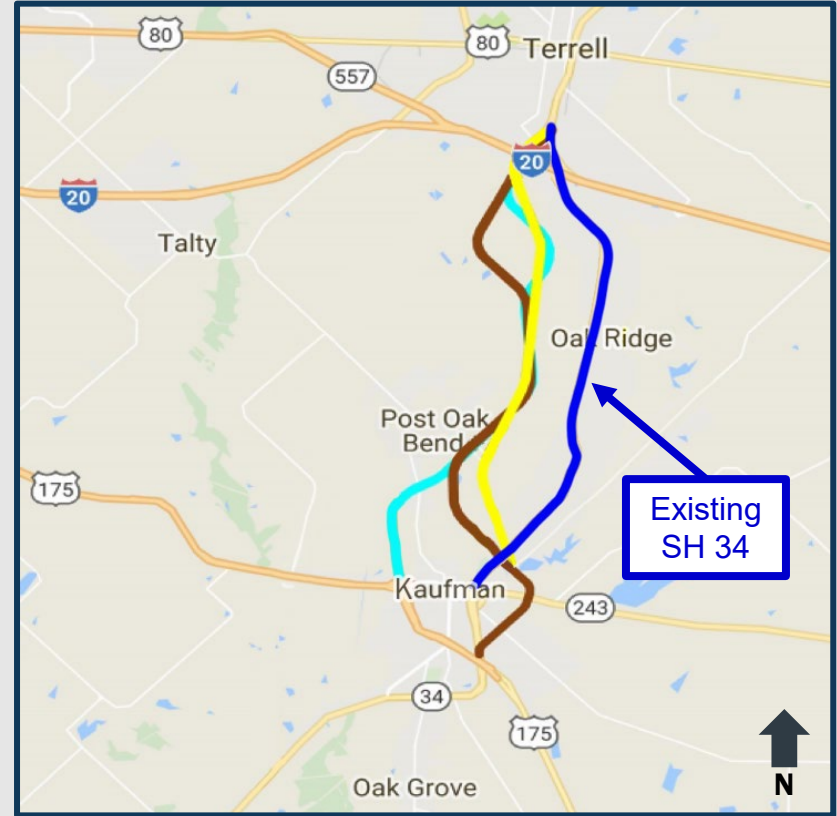
Proposed Rural Configuration on New Location





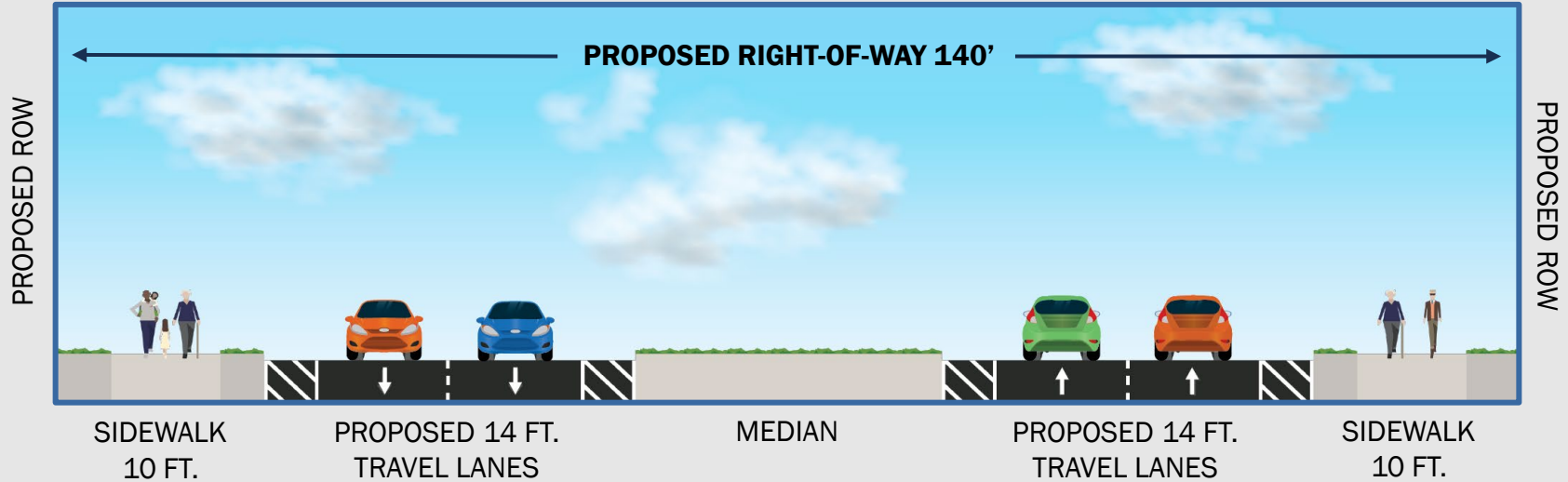
Existing SH 34 Re-evaluated

- Minimize impacts
- Reduce right-of-way width
- Urban roadway configuration





Proposed Urban Configuration on Existing SH 34 (Blue Alignment Alternative)





- 4 Alternatives**
- 3 New Location**
- 1 Improved Existing**

Additional evaluations & considerations include



Property



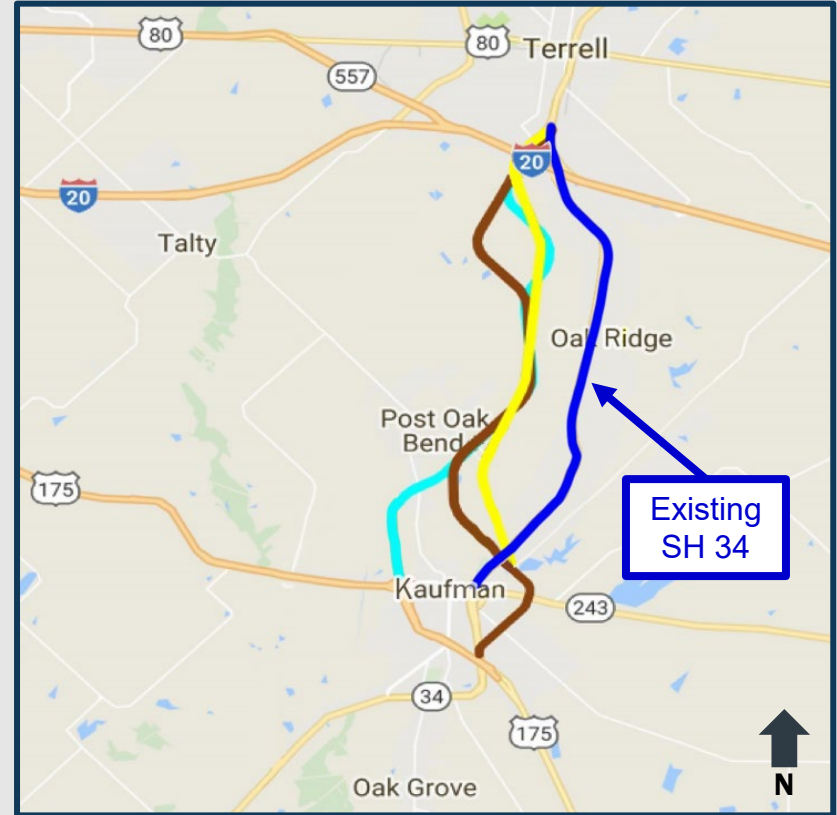
Environmental



Socio-economic



Cost



Alignment Alternatives Evaluation – Property Impacts



Evaluation Criteria	No Build	Light Blue	Brown	Yellow	Existing SH 34 Blue
		Rural 250' ROW 70 MPH	Rural 250' ROW 70 MPH	Rural 250' ROW 70 MPH	Urban 140' ROW, 45 MPH
Estimated ROW Acquisition (ac)	0	314	298	242	76
Total Number of Parcels	0	48	58	72	176
Impacted Residential (Not Displaced)	0	3	5	3	58
Displaced Residential	0	2	2	14	21
Impacted Commercial (Not Displaced)	0	1	2	4	8
Direct Displaced Commercial	0	0	0	2	3
Induced Displaced Commercial	0	0	0	0	0
Future Development Impacts	0	0	1	0	0

Alternatives Evaluation Matrix – Environmental & Socio-economic



Environmental Impacts

Evaluation Criteria	No Build	Light Blue	Brown	Yellow	Existing SH 34 Blue
		Rural 250' ROW 70 MPH	Rural 250' ROW 70 MPH	Rural 250' ROW 70 MPH	Urban 140' ROW, 45 MPH
Area Inside 100-year Floodplain (ac)	0	54	45	75	18
Park Properties Impacted (4f)	0	0	0	1	1
Hazmat Sites	0	0	0	1	4

Socio-economic Impacts

Enhance Regional Mobility	-	++	++	++	+
Satisfies Travel Demand for Year 2045	-	++	++	++	++
Reduces Crash Risk	-	+	+	+	+
Supports Future Regional Economic Growth	-	++	++	++	+

Alignment Alternatives Evaluation - Costs

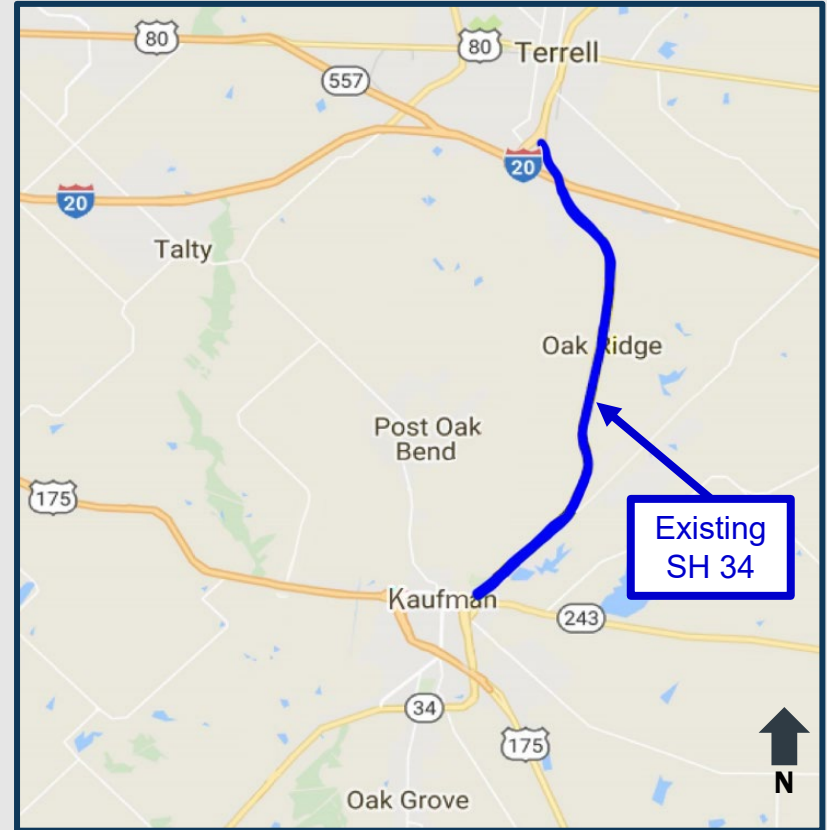


Evaluation Criteria	No Build	Light Blue	Brown	Yellow	Existing SH 34 Blue
		Rural 250' ROW 70 MPH	Rural 250' ROW 70 MPH	Rural 250' ROW 70 MPH	Urban 140' ROW, 45 MPH
Construction Cost	\$ -	\$ 101,300,000	\$ 90,413,000	\$ 74,808,000	\$ 90,536,000
Maintenance Cost (20-year design life)	\$ 5,930,000	\$ 10,150,000	\$ 10,506,000	\$ 9,734,000	\$ 3,536,000 ↓
Utility Relocation Cost	\$ -	\$ 668,000	\$ 682,000	\$ 686,000	\$ 1,580,000
Estimated ROW Costs	\$ -	\$ 3,738,000	\$ 3,790,000	\$ 8,488,000	\$ 9,267,000
Engineering Costs	\$ -	\$ 6,078,000	\$ 5,425,000	\$ 4,489,000	\$ 5,433,000
Total Project Cost	\$ 5,930,000	\$ 121,934,000	\$ 110,816,000	\$ 98,205,000	\$ 110,352,000



Expand Existing SH 34

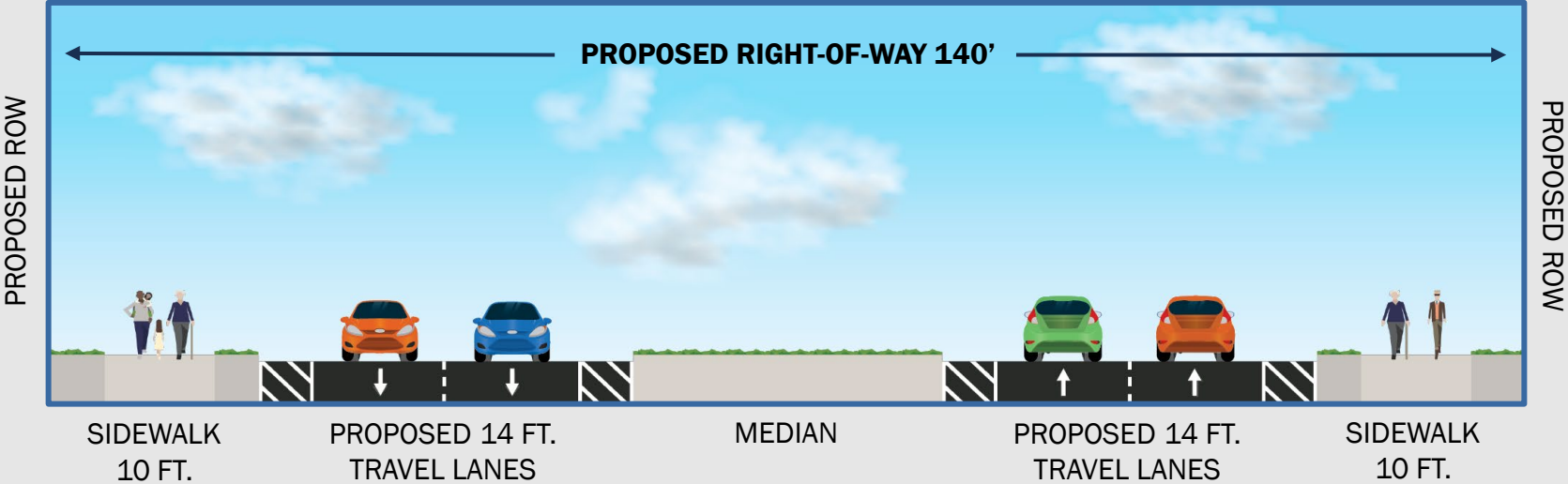
- Upgrade to Urban Arterial
- Widen to a four-lane divided facility
- Improve intersections and add deceleration lanes
- Add guard rails
- Least amount of additional total acreage to be acquired for right of way
- Low maintenance cost





Widening Existing SH 34

Proposed urban roadway configuration



“Next Steps” After the Study



*Contingent on available funding



Your comments and questions are welcome through **October 9, 2020**. To submit an official comment for the meeting documentation, please use one the following methods:



Mail:

TxDOT Dallas District
Attn: Stephen Endres, P.E.
4777 E. Highway 80
Mesquite, TX 75150



Email: Stephen.Endres@txdot.gov



Voicemail: (469) 595-7063



Comment Online:

keepitmovingdallas.com/SH34

**For general questions about the presentation or the project, please contact the
TxDOT Project Manager at Stephen.Endres@txdot.gov.**



TEXAS
34

Thank You