

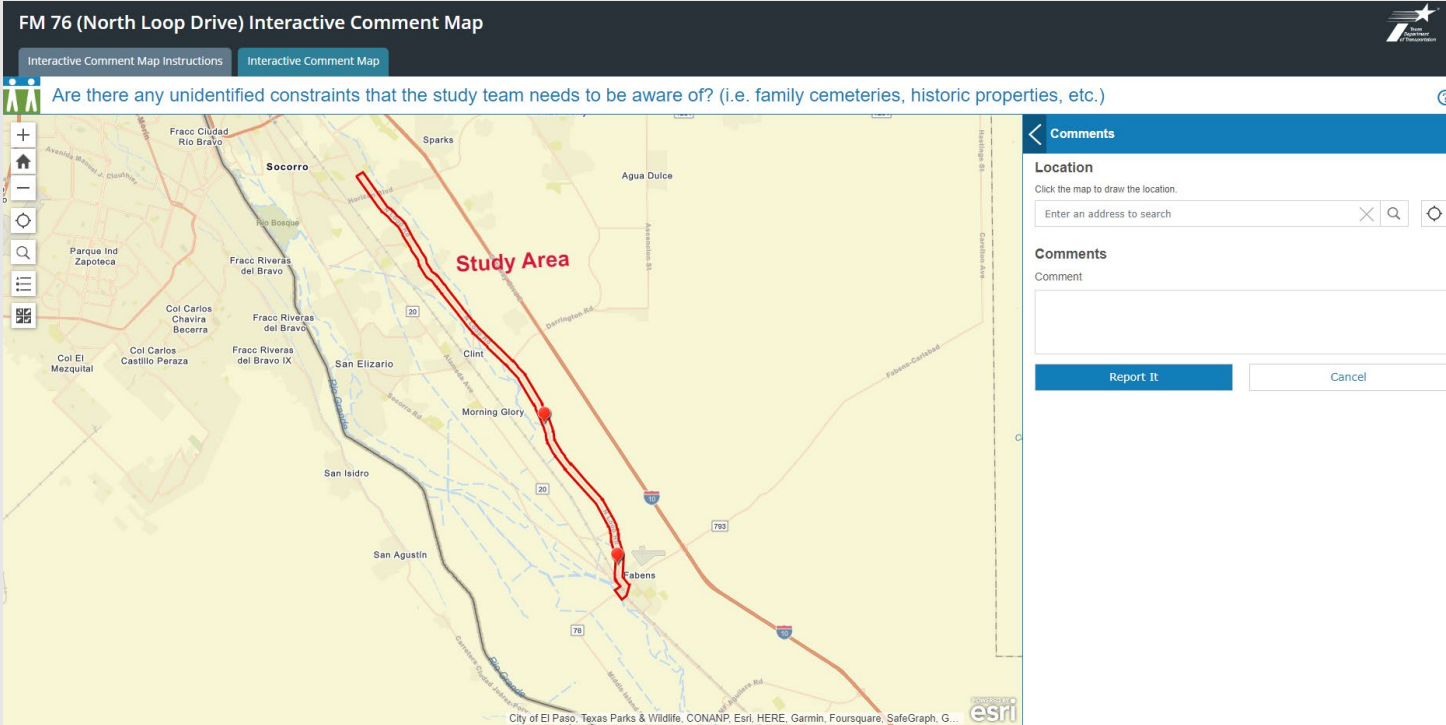
# INTERACTIVE COMMENT MAP



## PROJECT TEAM - WE WANT YOUR INPUT

This interactive mapping tool has been developed to gather your input. This tool will allow you to add comments to be considered by the study team. Please take a few minutes to provide your input using the interactive mapping tool. You can return to the first tab for instructions if needed. All comments will be reviewed and considered by the project team.

Access the online interactive comment map [here](#).



## DETAILED DIRECTIONS FOR LEAVING A COMMENT

To access the online interactive comment map, click [here](#) and a new browser window will open.

You will see an interactive map on the left and comments on the right. You can zoom in and click through the map to see locations, streets, and other participant's comments. To change the map background, click on the basemap gallery button on the left side of the screen to change the background to aerial imagery, streets, topographic, or other map background options.

To leave a comment, please follow these steps:

1. Click the green "Click to submit comment" button located in the right-side panel.
2. Either click on the map to drop a point or use the location tool to search for an address. To cancel your comment either click the "Cancel" button or hit the "Esc" key on your keyboard.
3. Please leave a detailed comment within the comment box.
4. Once your comment is completed. click "Report It" to send your comment to TxDOT for review.