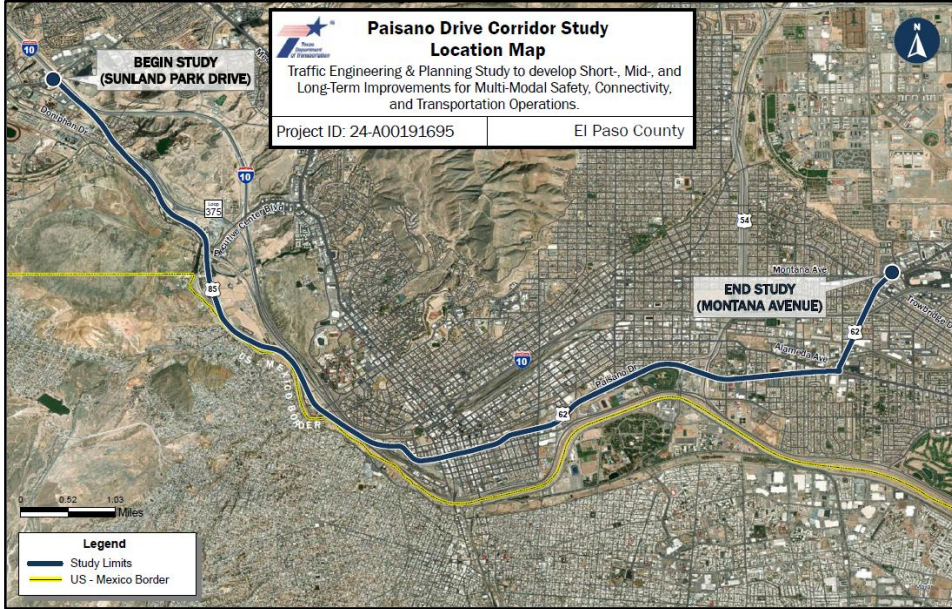


PAISANO DRIVE AND MONTANA AVENUE CORRIDOR STUDY

FACT SHEET



PAISANO DRIVE CORRIDOR LIMITS

STUDY OVERVIEW

The Paisano Drive and Montana Avenue Corridor Study is being conducted by the Texas Department of Transportation (TxDOT) – El Paso District. The Paisano Drive (US 62 and US 85) limits extend from Sunland Park Drive to Montana Avenue (US 62/180). The Montana Avenue (US 62/180) project limits extend from Paisano Drive to Loop 375. This is a Traffic Engineering and Planning Study to improve multi-modal safety and mobility. This 21-mile corridor study will produce short-, mid- and long-term improvements for Paisano Drive and Montana Avenue.



MONTANA AVENUE CORRIDOR LIMITS

STUDY PURPOSE

Determine short-, mid- and long-term recommendations that improve multi-modal safety, mobility, and connectivity along Paisano Drive and Montana Avenue.

KEY CONSIDERATIONS



SAFETY



MOBILITY & CONGESTION



**MULTIMODAL
(PEDESTRIANS, BIKE)**



CONNECTIVITY



FREIGHT

STUDY CORRIDOR QUICK FACTS

21 Miles

Major attractions:

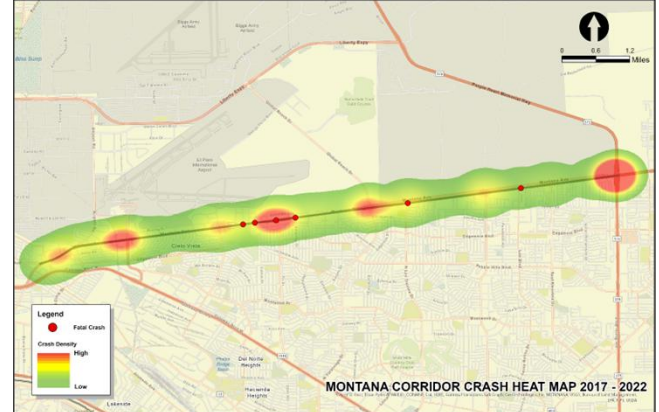
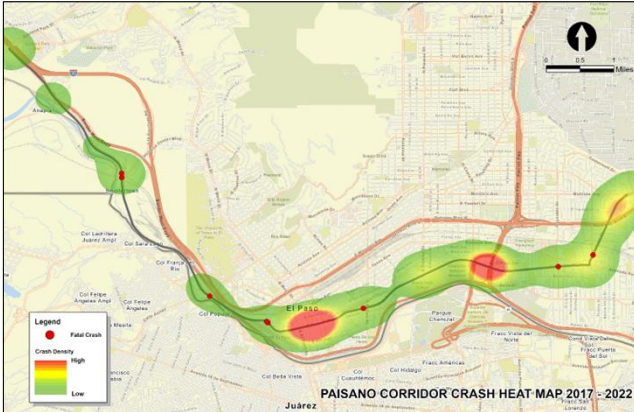
- Downtown El Paso
- Bridge of the Americas Port of Entry
- El Paso International Airport

PAISANO DRIVE AND MONTANA AVENUE CORRIDOR STUDY

FACT SHEET



TRAFFIC AND SAFETY ANALYSIS: CORRIDOR CRASH HEAT MAPS

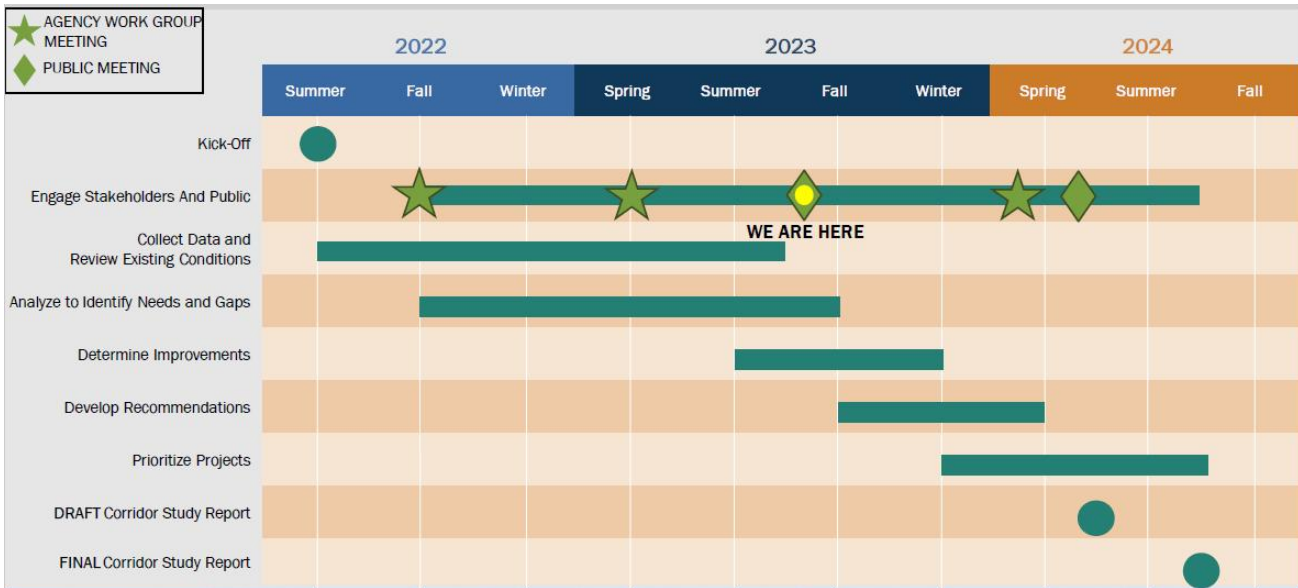


STAKEHOLDER ENGAGEMENT & PUBLIC INVOLVEMENT

This study will be guided with input from various stakeholders, agencies, and the public. The study team has conducted over 30 interviews with local agency stakeholders. Key stakeholders include:

- State Senator and Representatives, El Paso County Judge and Commissioners, and City Mayor, or their representatives
- City of El Paso
- El Paso Metropolitan Planning Organization (MPO)
- El Paso County
- Camino Real Regional Mobility Authority (CRRMA)
- General Services Administration (GSA)
- International Boundary and Water Commission (IBWC)
- El Paso County Water Improvement District No. 1 (EPCWID)
- Paso Del Norte Foundation
- Sun Metro
- Burlington Northern Santa Fe (BNSF) Railway
- El Paso International Airport
- University of Texas at El Paso (UTEP)
- City of Sunland Park

SCHEDULE



For More Information, Contact:

Gus Sanchez
 Project Manager, Advance Transportation Planning
 TxDOT, El Paso District

Email: ELP_Paisano-Montana@txdot.gov
 Tel: 915-790-4233