

# SH 20 (Alameda Avenue) Corridor Study

## Overview

TxDOT El Paso District is conducting a corridor study of State Highway (SH) 20 (Texas/Alameda/Main) from SH 20 (Mesa Street) in El Paso to Shaffer Road in the Town of Tornillo. The purpose of the study is to analyze and evaluate the current and future transportation needs for the SH 20 (Texas/Alameda/Main) corridor, gather feedback from stakeholders and the public, and develop a corridor plan for SH 20 (Texas/Alameda/Main).

The study area includes 35 miles of the SH 20 (Texas/Alameda/Main) corridor and goes through urbanized and rural areas within El Paso County. The corridor also serves as one of the major east/west connections for various communities along its route.

The study will be conducted through a process of data collection, analysis of current and future transportation needs, and public outreach. The final result of this study will be the development of conceptual design recommendations and a set of short-, medium-, and long-term improvements

## What is a Corridor Plan?

A Corridor Plan:

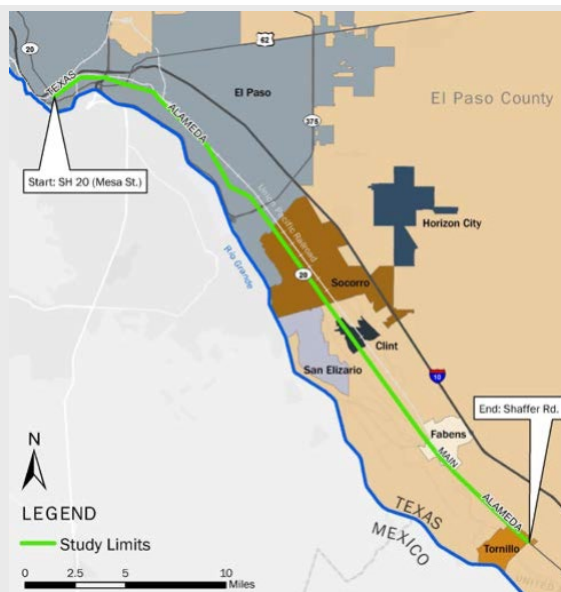
- Defines existing transportation challenges and opportunities and considers, evaluates, and provides possible solutions.
- Documents and evaluates the community's future vision regarding transportation and develops a set of recommendations to enhance safety and mobility.
- Includes data collection, public outreach, analysis of current and future transportation needs, and identification of potential improvements.

## How Can I Participate?

Public engagement is a key element to the success of this study. Coordination with the public and stakeholders will be conducted throughout 2022.

We welcome you to get involved in the study and participate in upcoming public meetings. The third series of public meetings is planned for Summer 2022. More details about these meetings will be posted to the study webpage at [www.txdot.gov](http://www.txdot.gov), keyword "Alameda Avenue". The study is expected to be completed in the Spring of 2023.

## Estimated Project Milestones



## Contact Information

Thelma Ramirez  
TxDOT Project Manager  
915.790.4392  
[Thelma.Ramirez@txdot.gov](mailto:Thelma.Ramirez@txdot.gov)

Megan Ruiz  
Alameda Study Team Deputy  
Project Manager  
517.927.2182  
[Megan.Ruiz@jacobs.com](mailto:Megan.Ruiz@jacobs.com)

For more information about the study, please visit [www.txdot.gov](http://www.txdot.gov), keyword "Alameda Avenue" or scan the QR code.

