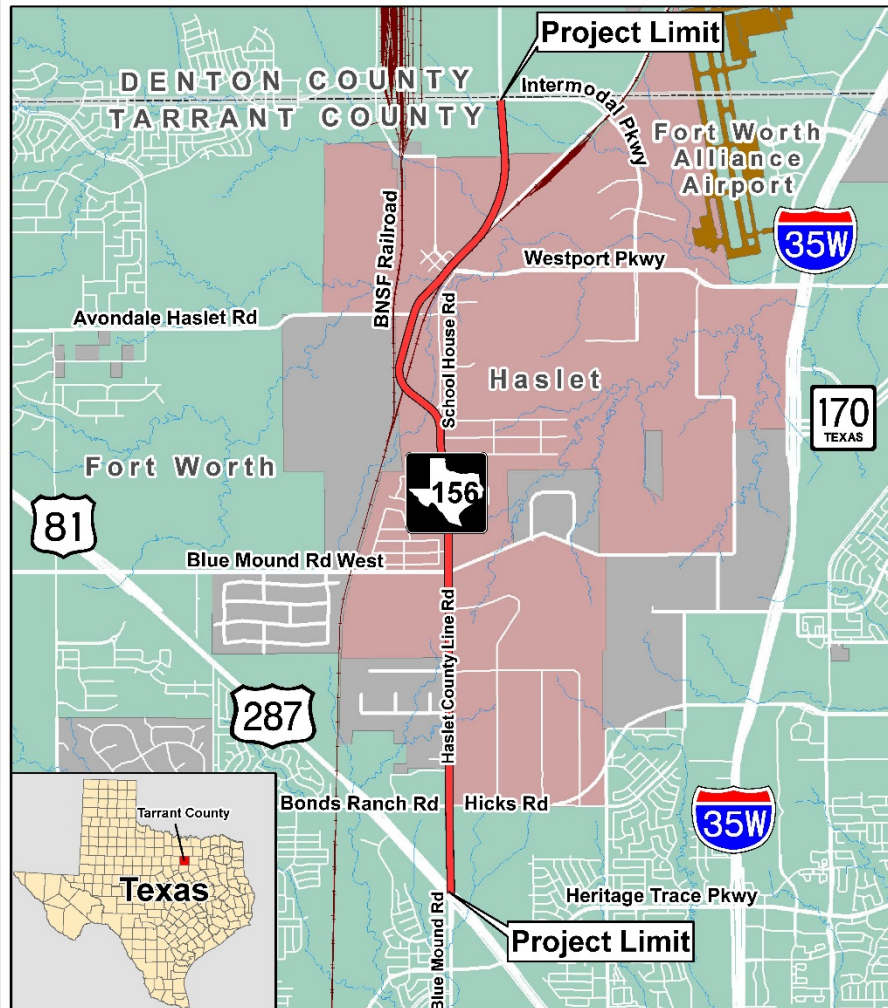




FM 156 (HASLET COUNTY LINE ROAD) FROM INTERMODAL PARKWAY TO US 81 / US 287

Public Meeting
December 13, 2018

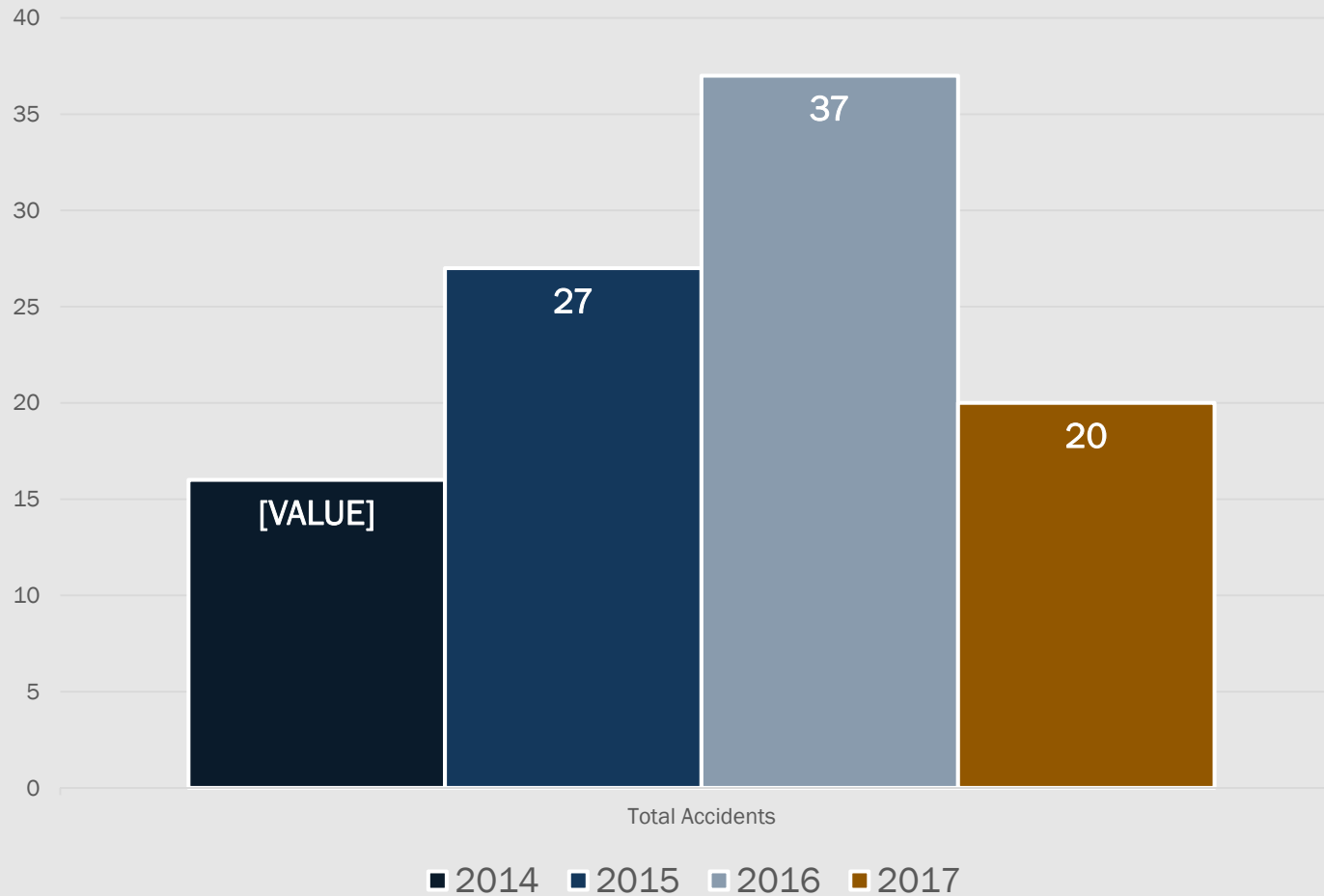
Project Overview



- FM 156 (Haslet County Line Road) Project Limits
 - From Intermodal Parkway to US 81/US 287

The purpose of this project is to improve safety, reduce congestion, improve capacity, and plan for future transportation needs.

FM 156 Crash Analysis: Total Accidents

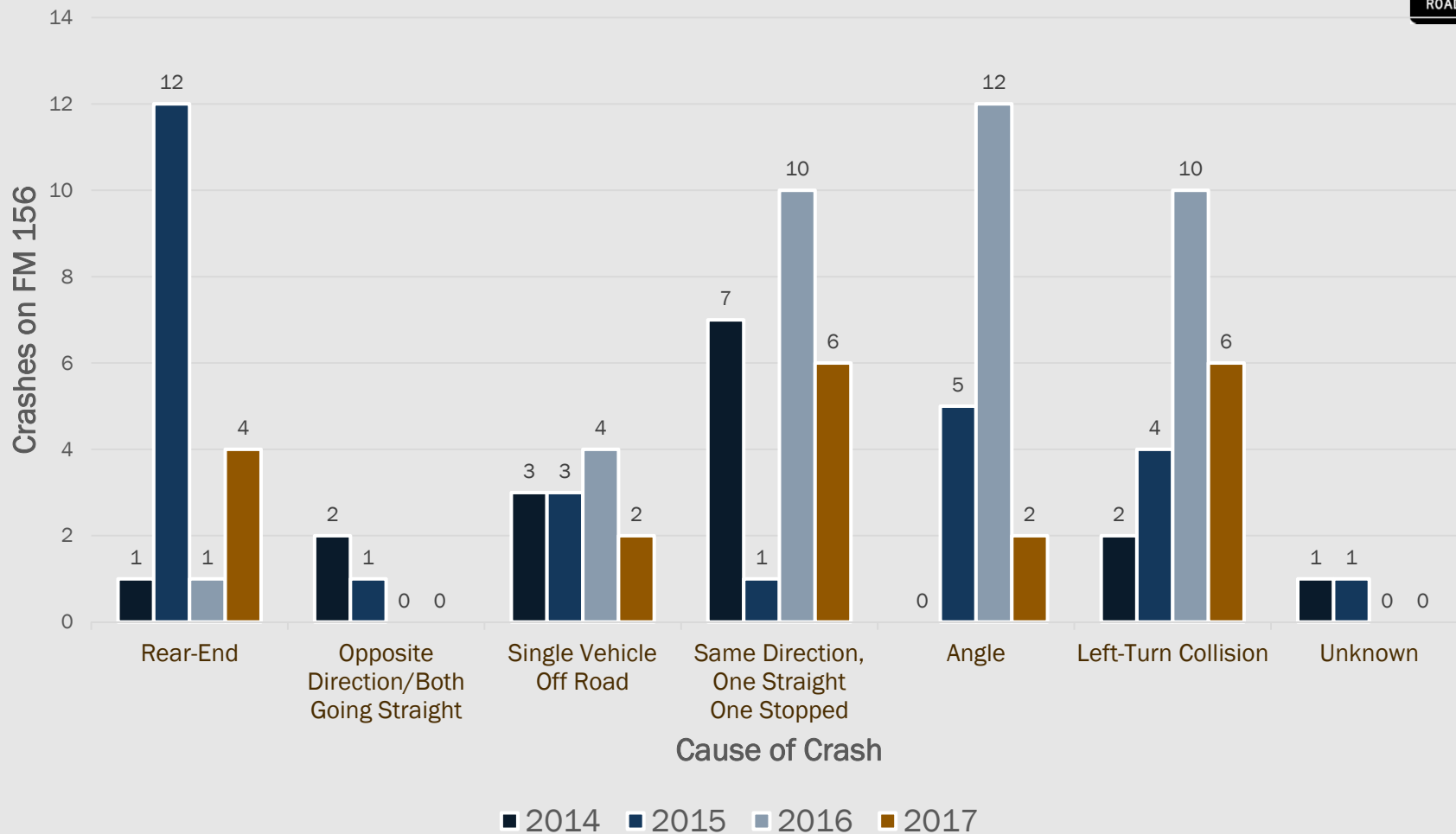


* January 2014 - September 2017

** Crashes assumed to be on the main highway based on data.

100 Reported Crashes from 2014 to 2017

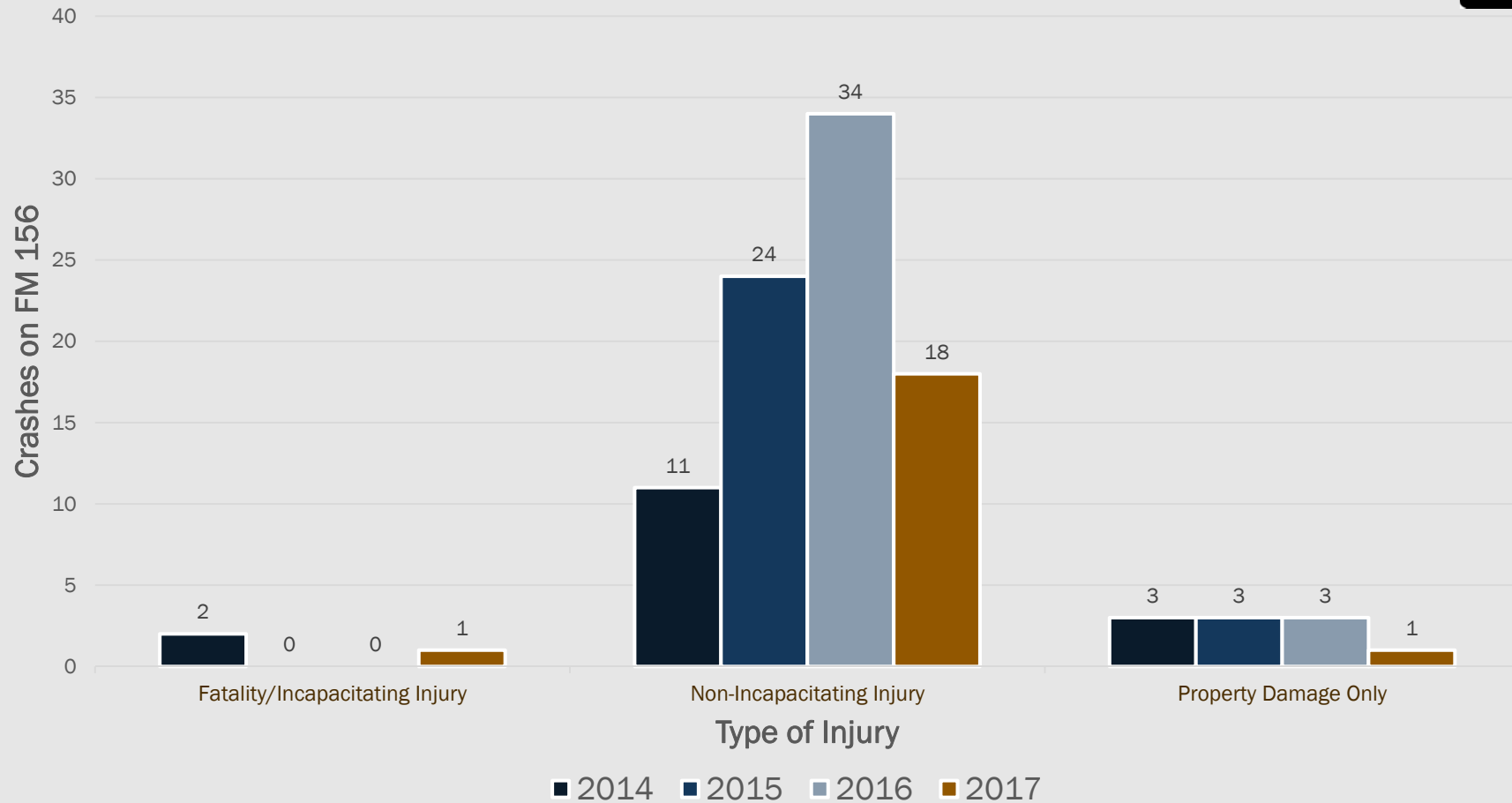
FM 156 Crash Analysis: Cause of Accident



* January 2014 - September 2017

** Crashes assumed to be on the main highway based on data.

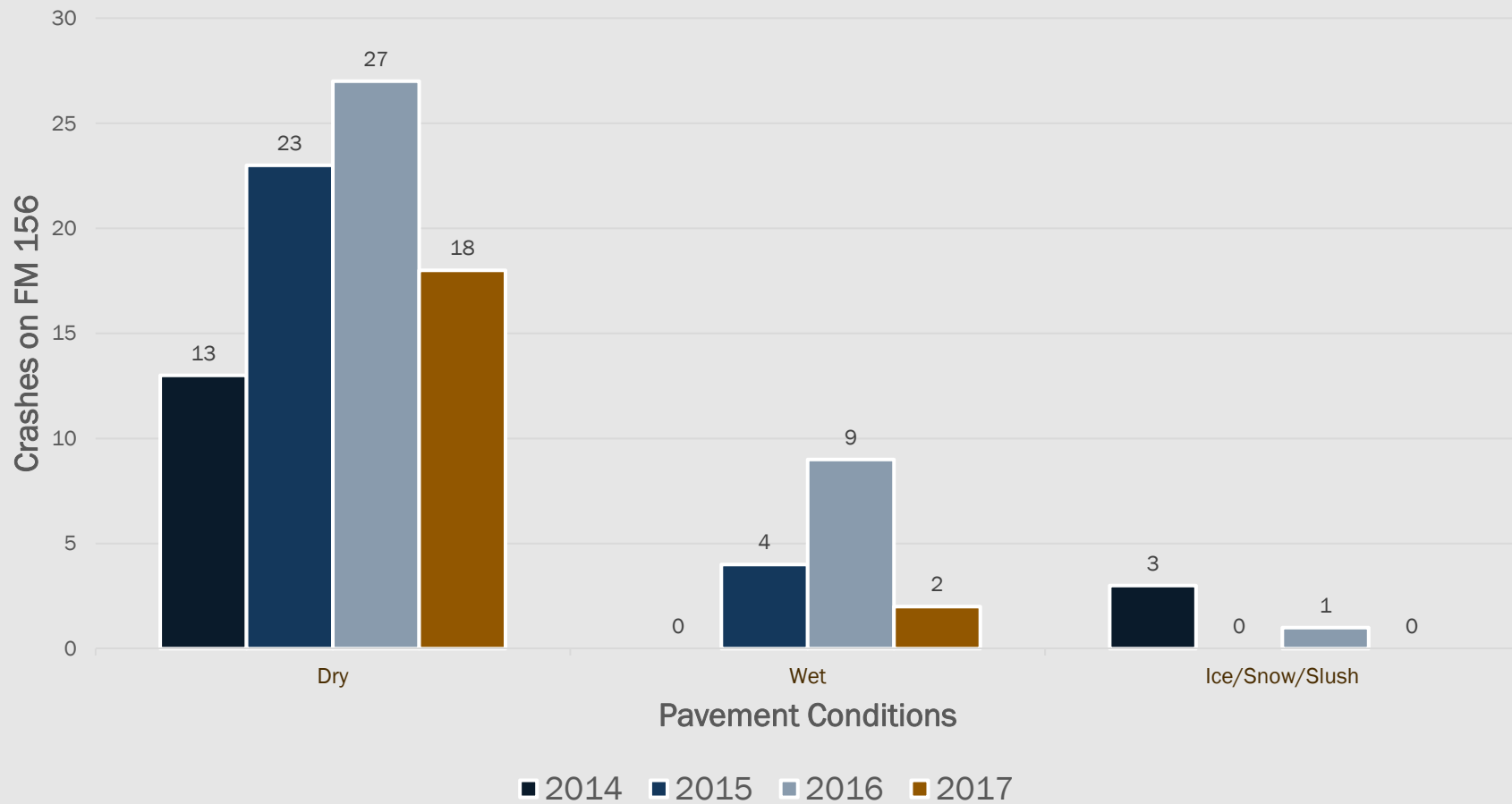
FM 156 Crash Analysis: Type of Injury



* January 2014 - September 2017

** Crashes assumed to be on the main highway based on data.

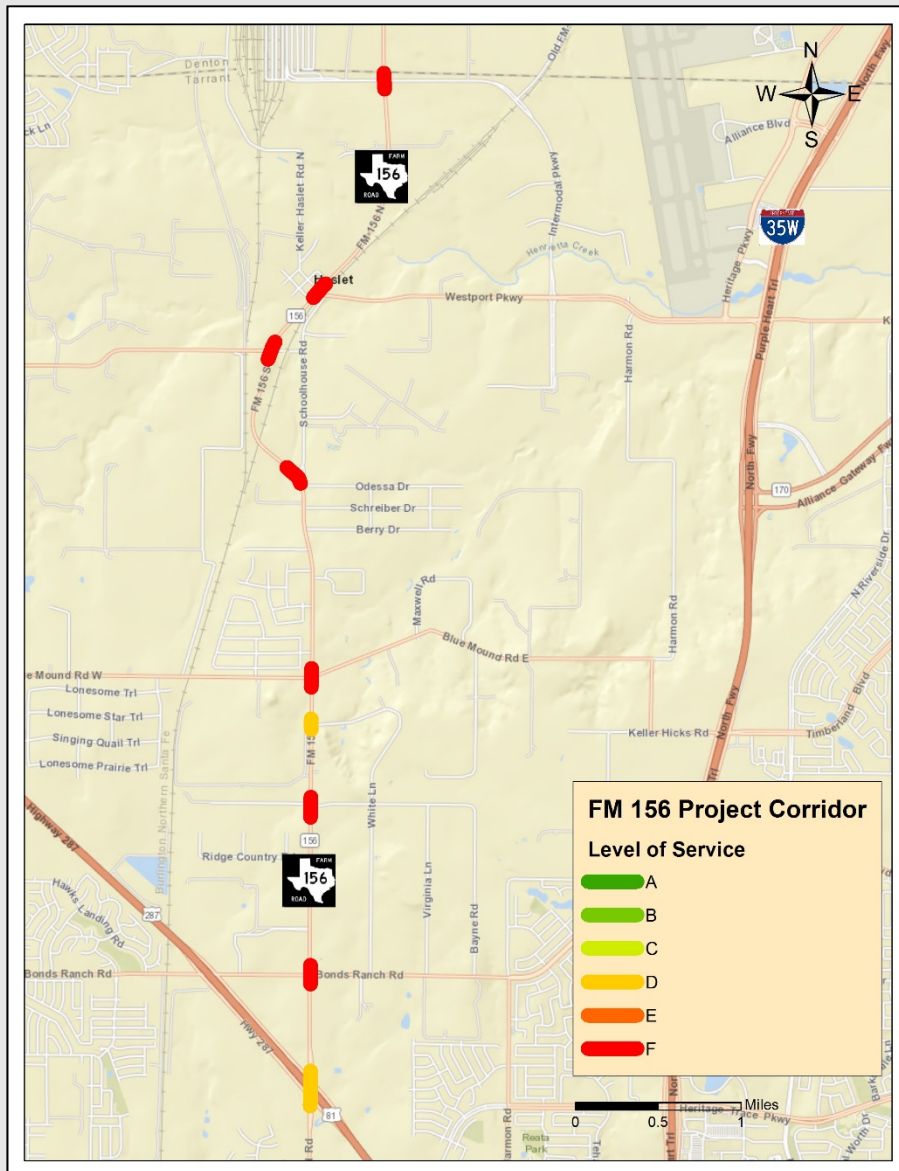
FM 156 Crash Analysis: Pavement Conditions



* January 2014 - September 2017

** Crashes assumed to be on the main highway based on data.

Project Overview



Level of Service (LOS) at Intersections

- LOS A through F where:
 - LOS A represents free flowing traffic
 - LOS F represents traffic conditions with heavy delays.



■ Goals

- Provide public involvement opportunities for stakeholders, roadway users, and the general community to engage with the project team and share feedback
- Provide information for those interested in the project process and timeline through the webpage (www.txdot.gov).
 - Keyword search “FM156”



■ Process

- Stakeholder Meetings (City and County)
- Technical Work Group Meetings (working session for public agencies)
- Public Meetings
- Public Hearing
- Traffic Noise Workshop after Environmental Approval (if noise abatement is warranted and deemed reasonable and feasible)

Proposed Improvements / Considerations



- Proposed six-lane urban section with raised curb center median south of Avondale-Haslet Road and bicycle / pedestrian accommodations.
- Proposed four-lane urban section with raised curb center median north of Avondale-Haslet Road and bicycle / pedestrian accommodations.
- Bicycle and pedestrian improvements will include:
 - 14 ft outside lane for shared use between vehicles and bicyclists on both sides
 - 5 ft sidewalk behind the curb on both sides



Evaluate three alternatives:

- ALTERNATIVE 1 - Widen to both sides. Obtain Right-Of-Way (ROW) from east and west sides of the current roadway.
 - 120 ft existing ROW (typical)
 - 170 ft proposed ROW (typical)
 - Approximately 30.1 acres of additional ROW



Evaluate three alternatives:

- ALTERNATIVE 2 - Widen to the east. Obtain ROW primarily from east side of the current roadway.
 - 120 ft existing ROW (typical)
 - 160 ft proposed ROW (typical)
 - Approximately 24.7 acres of additional ROW



Evaluate three alternatives:

- ALTERNATIVE 3 - Widen to the west. Obtain ROW primarily from west side of the current roadway.
 - 120 ft existing ROW (typical)
 - 180 ft existing ROW (typical)
 - Approximately 30.4 acres of additional ROW

Proposed Improvements / Considerations



- Replace bridge at Johnson Creek and widen other existing bridges or add twin adjacent to existing bridge
 - Reduces cost of proposed bridges by utilizing the existing bridge.
- Accommodate existing / planned transportation needs by others
 - Haslet Parkway
 - City of Haslet Schoolhouse Road & FM 156 Shared-Use Path



Proposed Improvements / Considerations



- Consider elimination of grade separation at the abandoned BNSF railroad crossing
 - Reduces cost by eliminating a new bridge at this location
 - Reduces cost by reducing additional ROW needed for new bridge
 - Improves access to FM 156



Proposed Improvements / Considerations



- A noise analysis will be conducted and noise abatement will be evaluated for any impacts
- Minimize additional ROW
 - Utilize existing ROW where possible
 - Utilize retaining walls where feasible
 - Widen from the existing centerline, each side, where possible



Anticipated Schedule



Timeline	Activity
December 2018	Public Meeting #1
Early 2019	Identification of Preferred Alternative
Mid 2019	Public Meeting #2
Mid 2019	90% Preliminary Design

Anticipated Schedule



Timeline	Activity
Late 2019	Approved Preliminary Design Schematic
Late 2019	Preparation of Right-of-Way Exhibits
Early 2020	Public Hearing and Environmental Clearance

Construction is anticipated to begin in 2025 and is currently estimated at \$74 million.

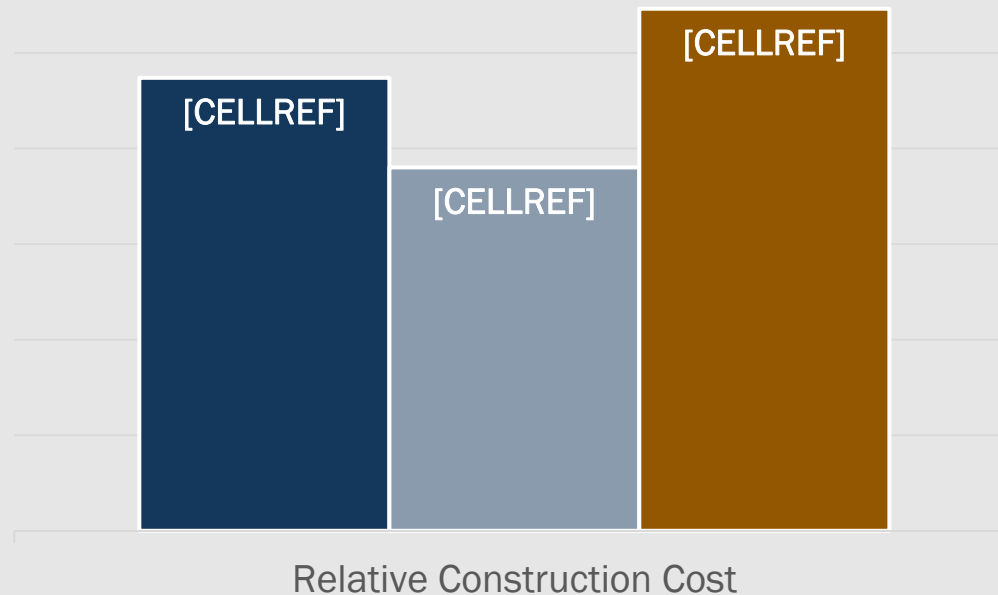
Alternatives Construction Cost Comparison



Construction cost is currently estimated at \$74 million.

General cost comparison between alternatives:

- Alternative 2 is the least costly of the alternatives at \$74M.
- Alternative 1 is approximately \$1.9 million more than Alternative 2.
- Alternative 3 is approximately \$3.4 million more than Alternative 2.



Share Your Input



Submit comments by:

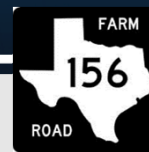
- Completing a comment card
- Email: FM156haslet@txdot.gov
- Mail: Texas Department of Transportation

ATTN: Natnael Asfaw, P.E.

2501 SW Loop 820

Fort Worth, TX 76133

While comments are always welcome, they must be received by **Thursday, January 3, 2019** to be included in the official meeting documentation.



Thank You!

Project Contact Information

Natnael Asfaw, P.E., TxDOT Project Manager

Phone: (817) 370-6603

Email: FM156haslet@txdot.gov

Website: www.TxDOT.gov

Key Word: FM156