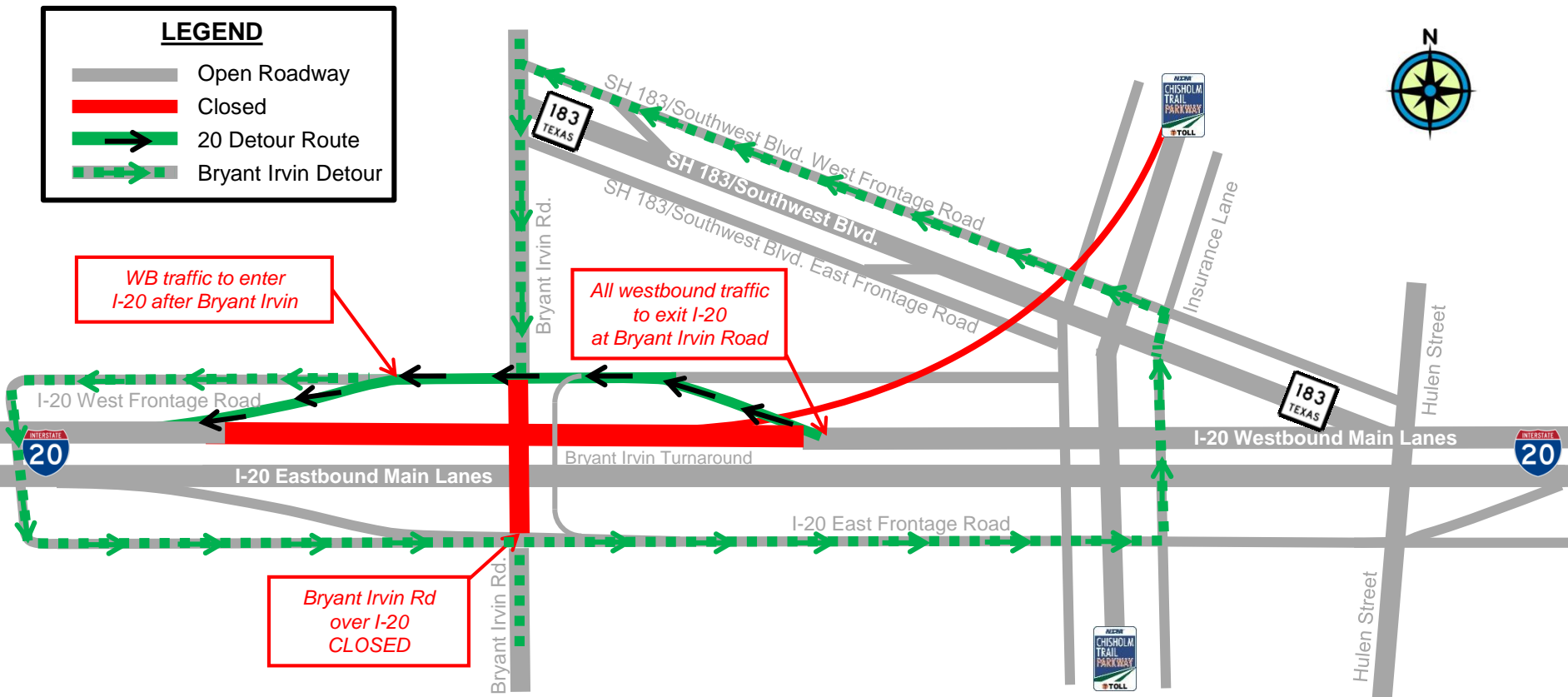


# WB I-20/BRYANT IRVIN ROAD CLOSURE AND DETOUR MAP: OCT. 29 - 31



**WHERE:** Westbound Interstate 20 (I-20) at Bryant Irvin Road  
Bryant Irvin Road over I-20  
Southbound Chisholm Trail Parkway ramp to westbound I-20

**WHEN:** Sunday through Tuesday nights, October 29 – 31, 9 p.m. to 6 a.m. (weather permitting)

**WHAT:** Westbound I-20 will be closed overnight on Sunday, Monday and Tuesday Oct. 29 – 31 for bridge demolition activities. Motorists should expect delays and thru traffic can use Interstate 30 as an alternate route. To facilitate the detour of traffic, the Bryant Irvin Road bridge will be closed to thru traffic over I-20. All westbound I-20 motorists will exit at Bryant Irvin Road and continue on the frontage road and re-enter I-20 at the next entrance ramp. Police will be present to facilitate the flow of traffic on the detour routes. The ramp from southbound Chisholm Trail Parkway to westbound I-20 will be closed and motorists can follow the route marker signs to access I-20.

