



Town Hall Meeting Presentation

I-30 West Corridor Study

I-30 West from I-820 to Chisholm Trail Parkway

I-820 from Silver Creek Road to Chapin Road

Spur 341 from I-30 to Downe Drive

SH 183 from Ridgmar Meadow Road to Rosewood Street

Tarrant County

CSJs: 1068-01-213, 1068-01-230, 0008-15-057











- 1 Project Overview
- 2 Corridor Study Update
- 3 Design Schematic & Environmental Assessment Update
- 4 Public Meeting Series No. 1 (March 2022) Summary
- 5 Design Updates
- 6 Schedule and Next Steps



- Federal Highway Administration (FHWA)
- North Central Texas Council of Governments (NCTCOG)
- Naval Air Station Joint Reserve Base Fort Worth
- City of Fort Worth
- City of White Settlement
- Tarrant County
- Trinity Metro



-  Alleviate Congestion
-  Improve Operations
-  Enhance Safety
-  Provide Transportation Options
-  Develop Implementable Solutions
-  Coordinate Future Metropolitan Transportation Plan Revisions with Study Recommendations





I-30 West

- From I-820 to Chisholm Trail Parkway

I-820

- From Silver Creek Road to Chapin Road

Spur 341

- From I-30 to Downe Drive

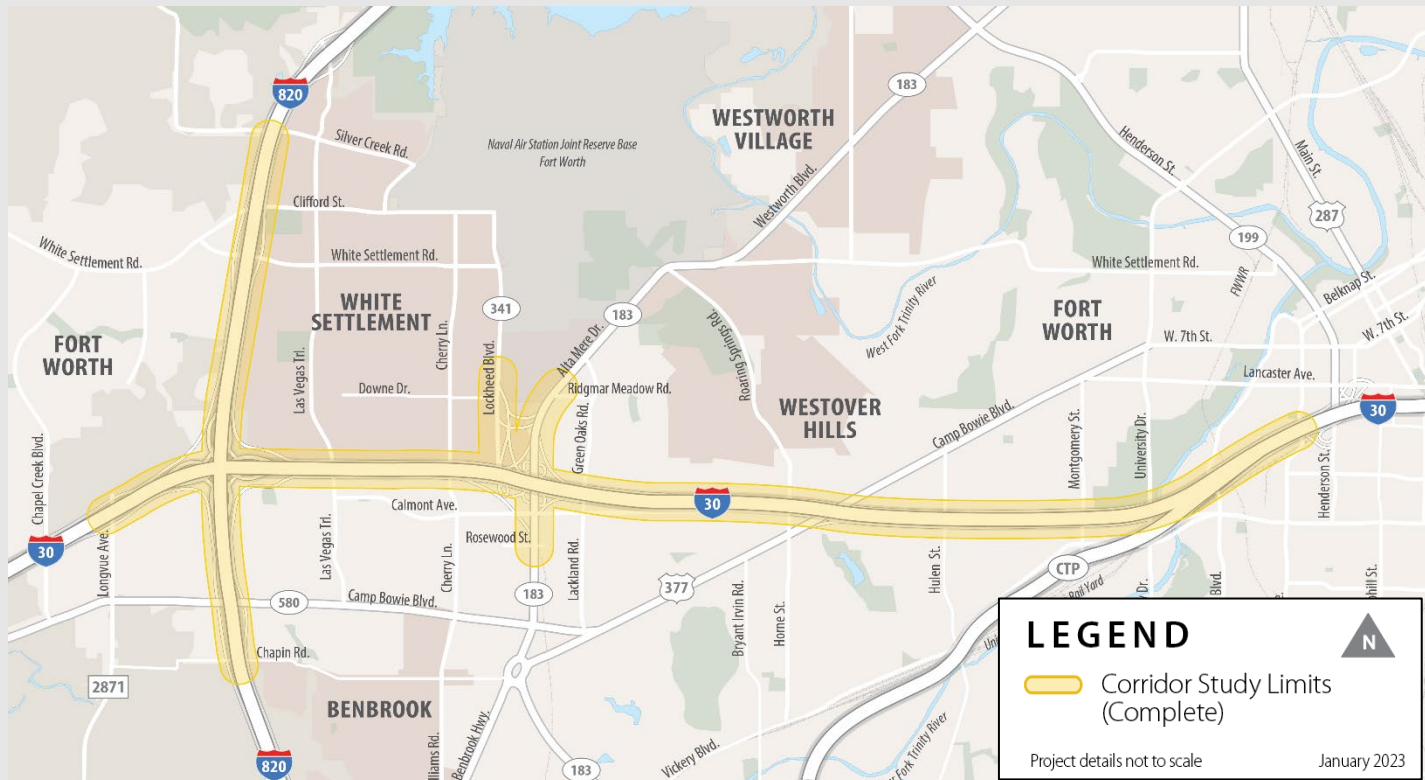
SH 183

- From Ridgmar Meadow Road to Rosewood Street





- Conceptual Layouts
- Alternatives Analysis
- Traffic Data and Projections
- Traffic Engineering and Operations
- Public Involvement (Public Meeting Series No. 1 were held in March 2022)

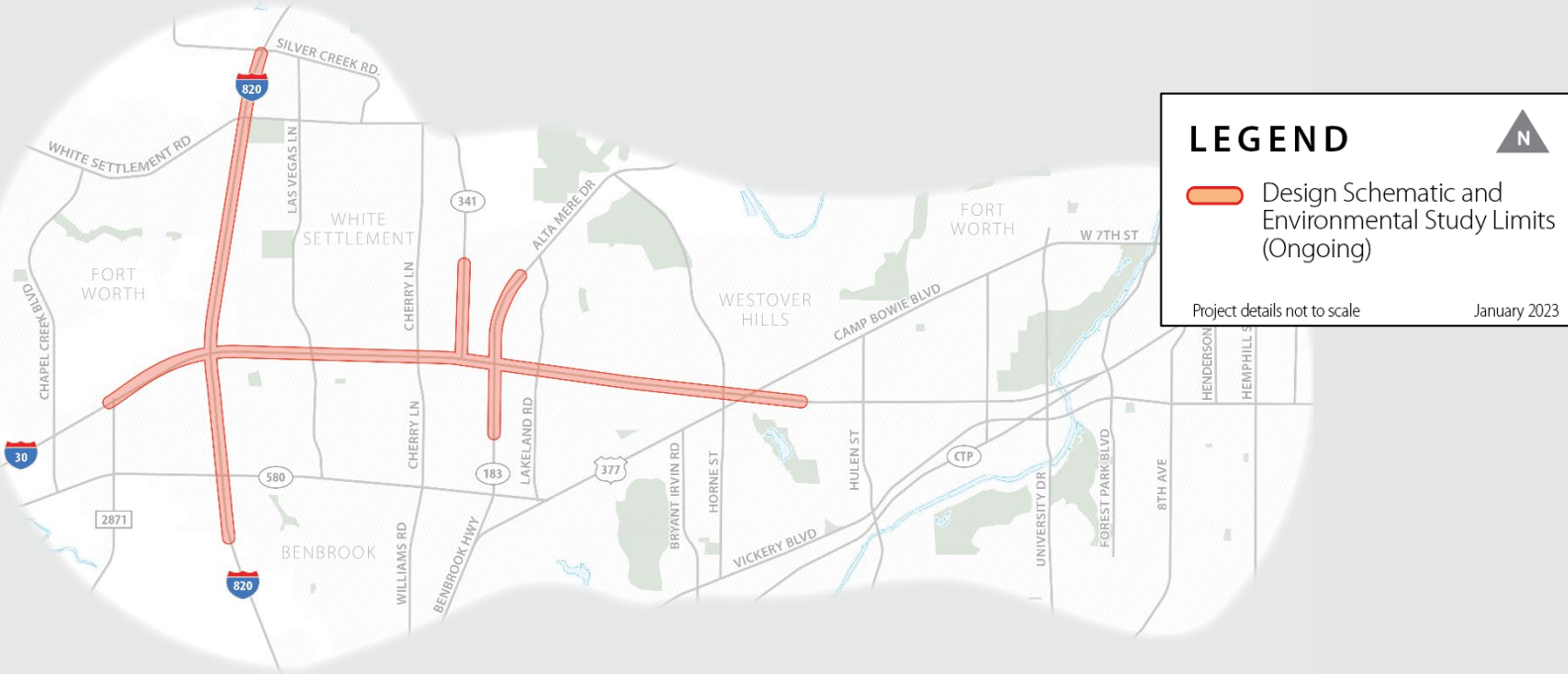




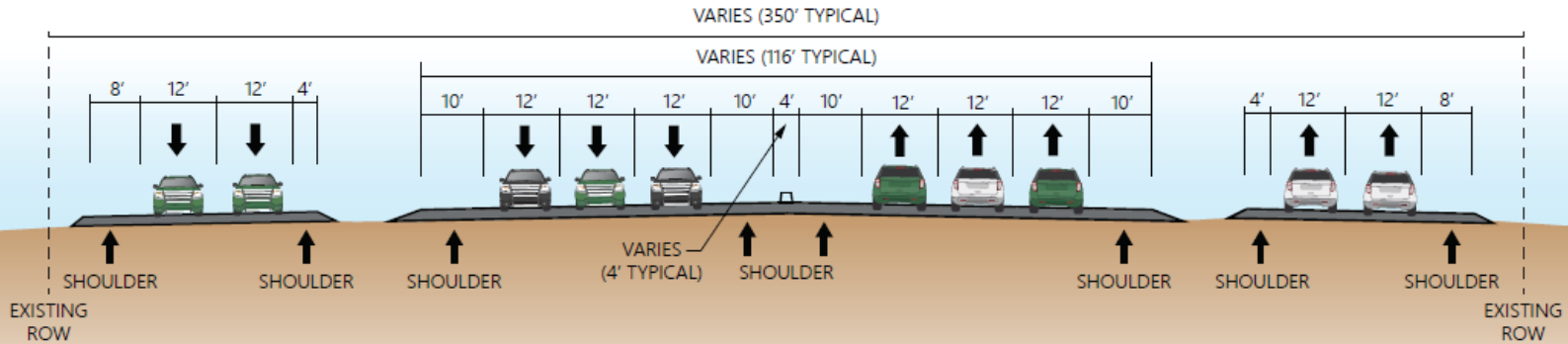
- Corridor study has been completed
- Conclusions:
 - No tolled or express lanes
 - Main lane alternative additional general purpose lanes
- Public feedback received during March 2022 public meetings influenced the future design of the corridor analyzed by the Corridor Study
 - Design updates will be presented later in the presentation
- The section along I-30 between Camp Bowie Boulevard and Chisholm Trail Parkway are not included in the Design Schematic & Environmental Assessment for this project, and would be studied as a future project



- Schematic of Recommended Alternative
- Drainage Study
- Interstate Access Justification Report
- Environmental Assessment (including Noise Analysis, etc.)
- Public Involvement (Public Meeting Series No. 2 & Public Hearing)



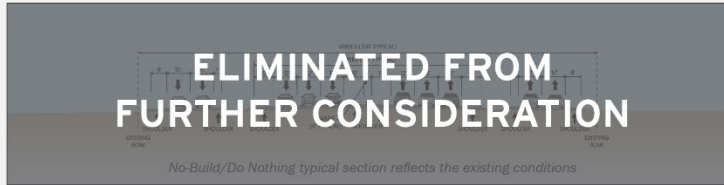
**Note: Does not include area between Camp Bowie Boulevard and Chisholm Trail Parkway.*



- Three to four 12-foot-wide general purpose lanes in each direction
- Two to four 12-foot-wide discontinuous frontage road lanes in each direction
- Existing right of way varies with a typical width of 350 feet
- Limited pedestrian and no bicycle accommodations



No-Build/Do Nothing*



**Although the No-Build/Do Nothing Alternative was eliminated from further consideration during the corridor study, it will be carried forward throughout the environmental document as a baseline comparison to the Build Alternative.*

- Existing three to four general purpose lanes in each direction
- Existing two to four discontinuous frontage road lanes in each direction
- Baseline alternative
- No improvements on project corridor
- Includes maintenance

Additional General Purpose Lanes (Recommended Alternative)



- Add one to two general purpose lanes in each direction
- Add pedestrian and bicycle accommodations
- Evaluate continuous frontage roads
- Additional right of way required

Concurrent Express Lanes



CSJ: 1068-01-213

- Add zero to one general purpose lane in each direction
- Add one concurrent express lane in each direction
- Add pedestrian and bicycle accommodations
- Evaluate continuous frontage roads
- Additional right of way required

Reversible Express Lanes

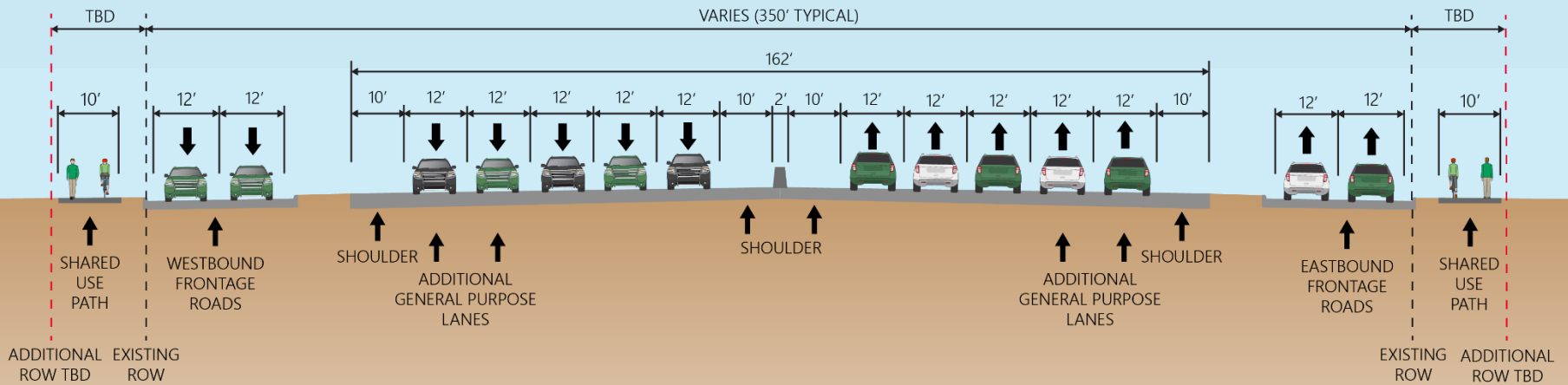


- Add two reversible express lanes
- Add pedestrian and bicycle accommodation
- Evaluate continuous frontage roads
- Additional right of way required



General Purpose Alternative:

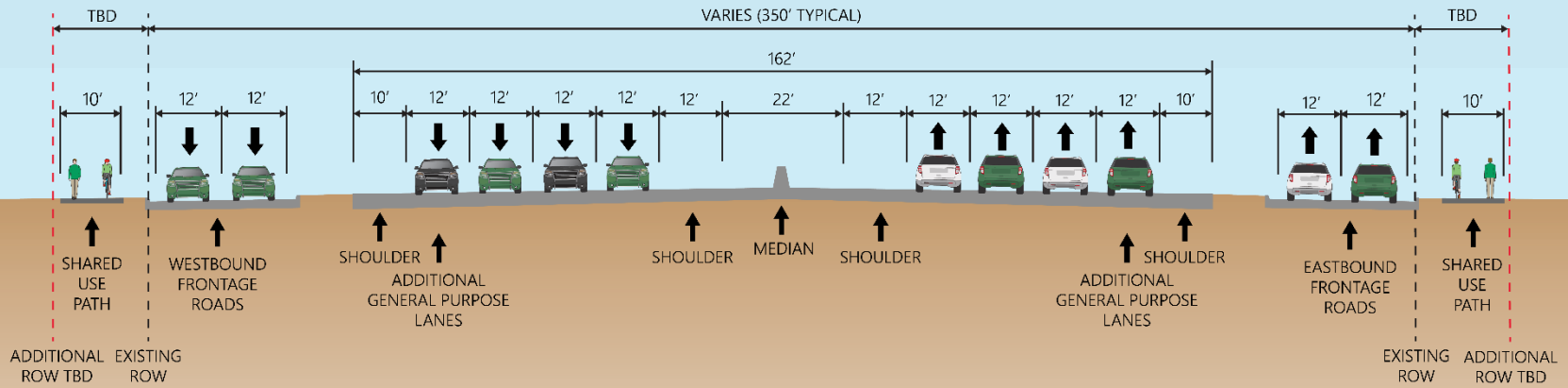
- 5 non-tolled general-purpose lanes in each direction (10 total)
- Added pedestrian and bicycle accommodations
- Continuous frontage roads
- Additional right of way may be required
- A 10-foot-wide shared-use path for bicycles and pedestrians would be provided in each direction along the frontage roads where reasonable and feasible

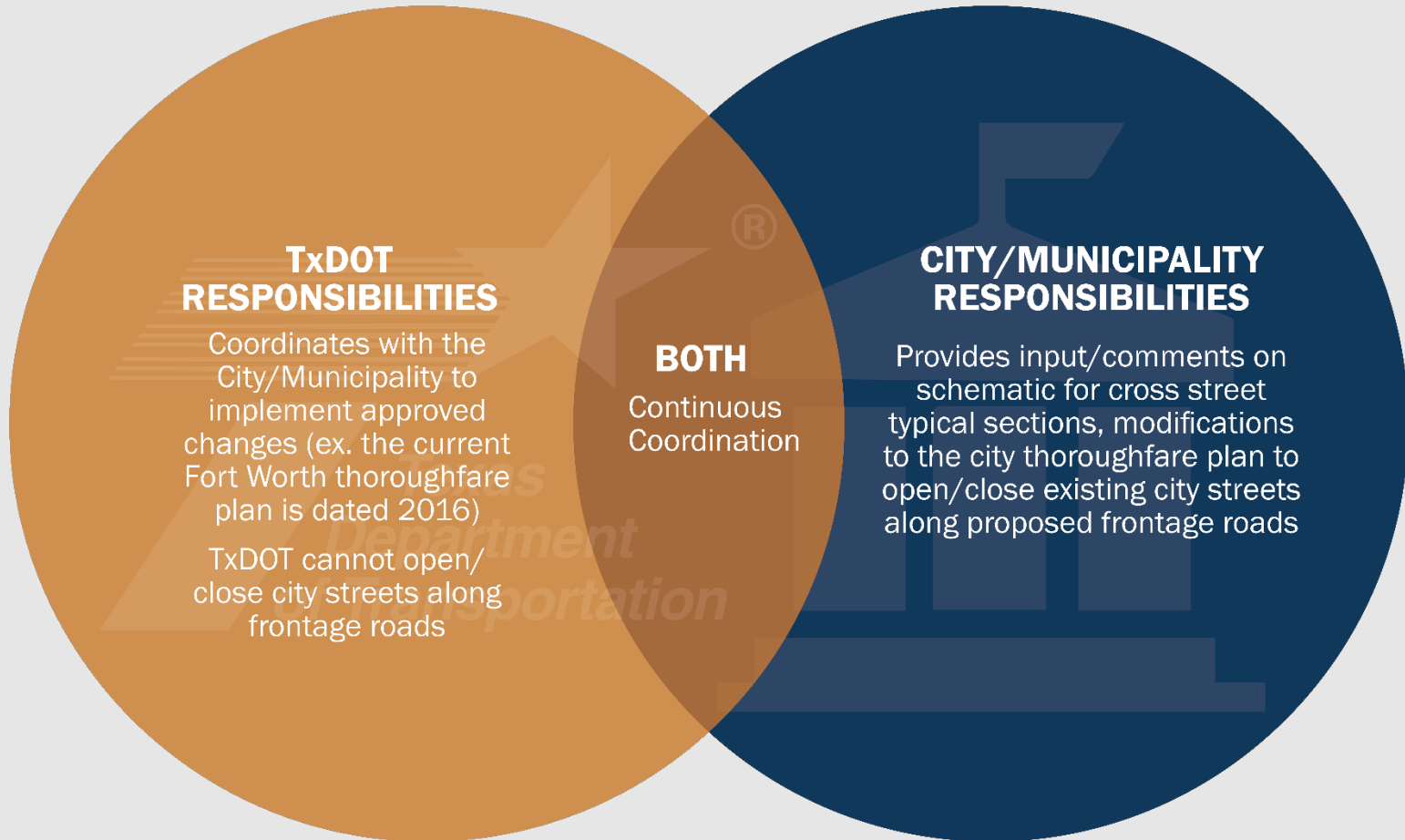


Revised Recommended Alternative - General Purpose Alternative



- 4 non-tolled general-purpose lanes in each direction (8 total)
- Add pedestrian and bicycle accommodations
- Continuous frontage roads
- Additional right of way may be required
- A 10-foot-wide shared-use path for bicycles and pedestrians would be provided in each direction along the frontage roads where reasonable and feasible





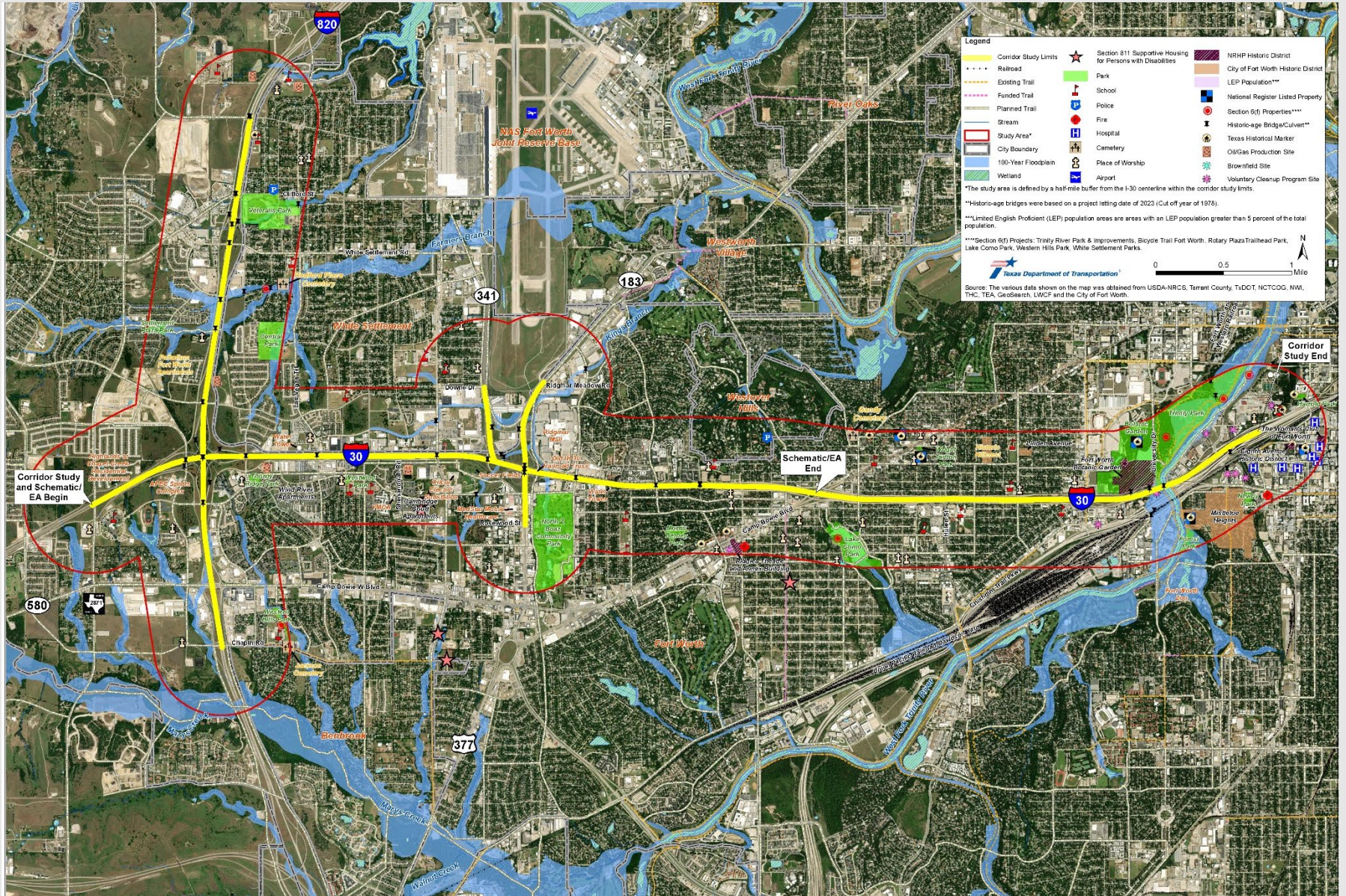


Categories to be evaluated:

- Air Quality
- Biological Resources
- Community Impacts
- Archeological Resources
- Historical Resources
- Farmlands
- Hazardous Materials
- Indirect and Cumulative Impacts
- Traffic Noise
- Water Resources
- Waters of the U.S./Wetlands
- Section 4(f) Properties*

*Section 4(f) refers to the original section within the U.S. Department of Transportation Act of 1966 which provided for consideration of park and recreation lands, wildlife and waterfowl refuges, and historic sites during transportation project development.

Environmental Constraints Map





- Technical Work Group Meeting (TWG) No. 1 – June 20, 2019
- Meetings with the City of Fort Worth, City of White Settlement, Naval Air Station Joint Reserve Base, Trinity Metro and NCTCOG:
 - Feb. 3, 2021
 - Feb. 25, 2021
 - March 4, 2021
 - March 25, 2021
- TWG No. 2 – Oct. 5, 2021
- Public Meeting Series No. 1 – Virtual meeting with two in-person options
 - March 22, 2022, at Education Service Center Region 11
 - March 24, 2022, at Fort Worth Botanic Garden
- Meeting with City of White Settlement Aug. 24, 2022
- Coordination ongoing with adjacent projects
 - I-30 from Linkcrest Drive to I-820
 - SH 183 North Tarrant from I-30 to SH 199
 - Bomber Trail



PUBLIC MEETING ATTENDANCE: IN-PERSON

MARCH

22



37 people
in attendance at Education
Service Center Region 11

MARCH

24



53 people
in attendance at Fort Worth
Botanic Garden - Oak Hall/
Rose Room

PUBLIC MEETING ATTENDANCE: ONLINE

Web traffic from March 22, 2022 - April 25, 2022



352

Unique visitors to
www.txdot.gov

487

Narrated English
Presentation on
YouTube

101

Narrated Spanish
Presentation on
YouTube





COMMENTS SUBMITTED



29

Public Meeting
Conversation
Comments



16

Email
Comments



12

Written
Comments



6

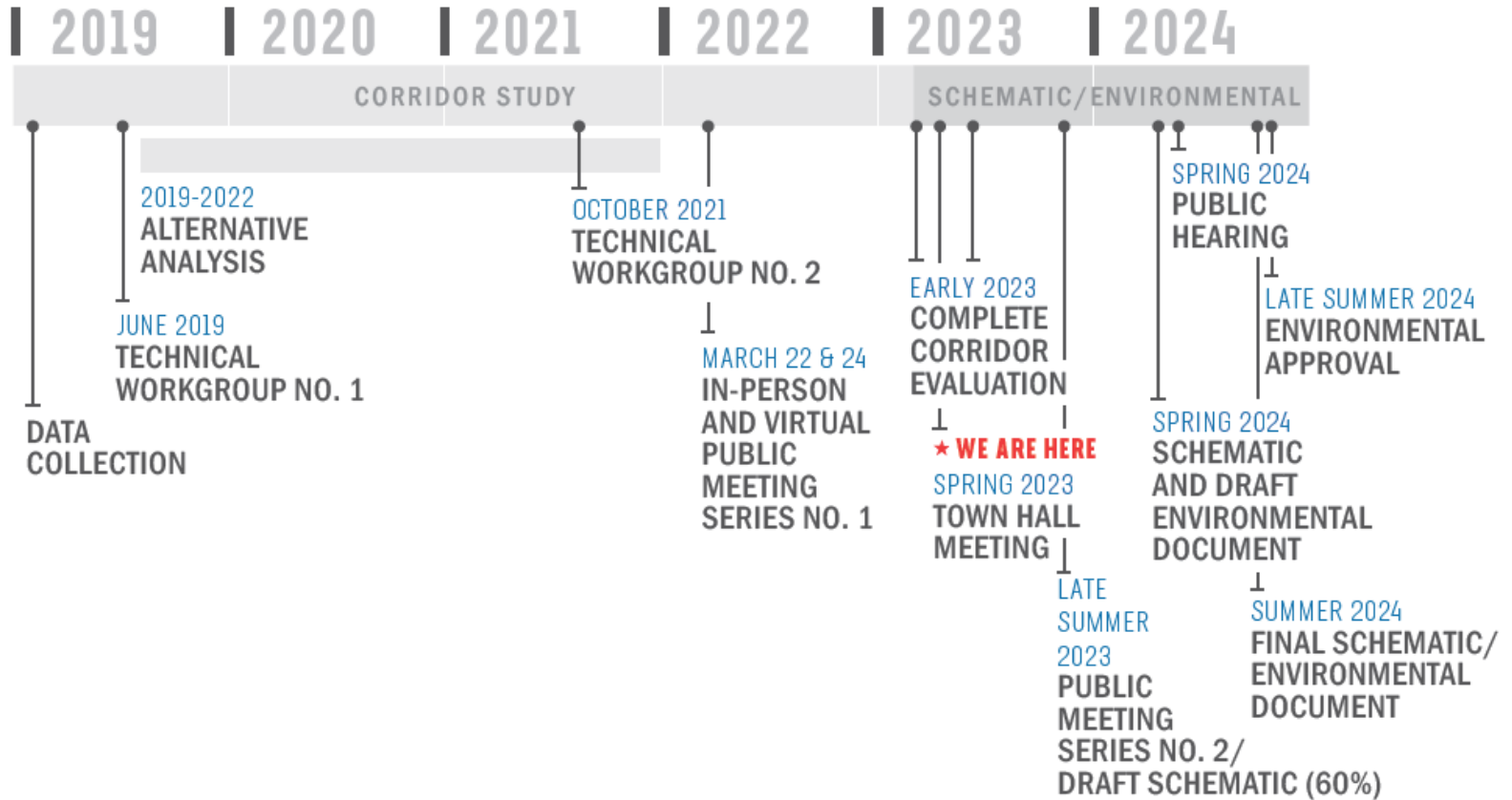
Phone Call
Comments



2

Mail
Comments

- Major themes of comments received:
 - Right of Way Impacts
 - Access Management/Neighborhood Access
 - Drainage
 - Traffic Impacts
 - Design Update Requests
 - Bicycle/Pedestrian
 - Transit
 - Sound/Noise Concerns
 - Maintenance
 - No Express Lanes
 - Cost
 - Shared Use Path



*Preliminary Subject to Change



Thank you for your interest in the
I-30 West Corridor Study.



TxDOT Project Manager – Charles Cox, P.E.

2501 S.W. Loop 820

Fort Worth, TX 76133

(817) 370-6533

FTW_I_30_West@txdot.gov