



TEXAS DEPARTMENT OF TRANSPORTATION

WELCOME

TO THE PROPOSED FM 1960 IMPROVEMENT PROJECT PUBLIC MEETING

from East Gatewick Road to Interstate-(I) 69

In-Person Public Meeting: September 15, 2022

Virtual Public Meeting: September 13, 2022 to September 30, 2022

Why Am I Here?

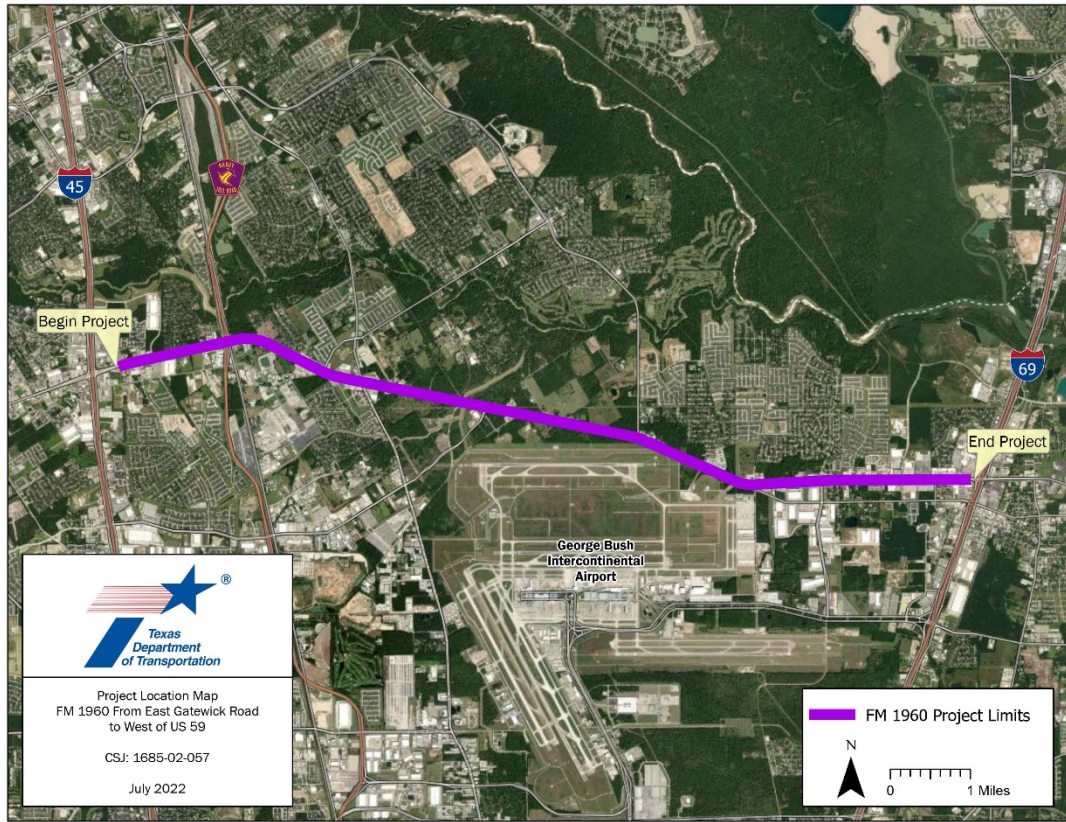
- **Learn** about the proposed project
- **Review** the proposed improvements
- **Submit** comments

The environmental review, consultation, and other actions required by applicable Federal environmental laws for this project are being, or have been, carried-out by TxDOT pursuant to 23 U.S.C. 327 and a Memorandum of Understanding dated December 9, 2019, and executed by FHWA and TxDOT.

FM 1960 Project Overview



- Project length: Approximately 9 miles
- Located from East Gatewick Road to just west of Interstate- (I) 69
- Harris County, Texas





- Access Management Study was completed by TxDOT in December 2020 to:
 - Assess operational and safety needs for FM 1960
 - Identify safety and mobility improvements
 - To reduce crashes
 - Alleviate traffic congestion
 - Improve traffic flow
 - Improve access for existing and future development

- Study identified a high number of conflict points where crashes occur

- Improvements developed for the corridor were based on:
 - Traffic and safety analyses
 - Input from stakeholders and the public

- Schematics/preliminary design reflecting these improvements were developed for the corridor

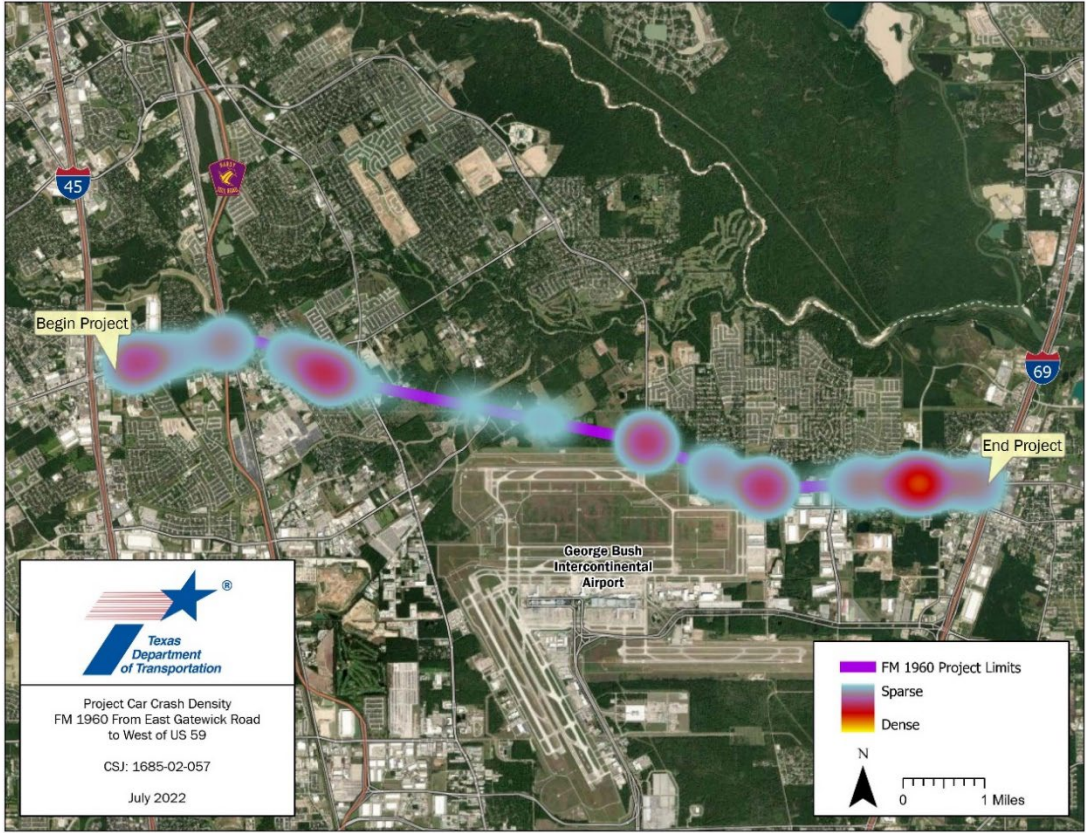


- Steering committee of government entities and community representatives
 - Met four times between June 2019 and December 2020
 - Identified stakeholders, provided input on known issues in the corridor, developed study goals, provided input on proposed improvements, helped with prioritizing proposed improvements
- Stakeholder engagement
 - Met five times between July 2019 and March 2020
 - Kept businesses and the community informed
 - Offered opportunities for input in the decision-making process



- Public Meetings
 - October 2019 (in-person)
 - Detailed information shared about the existing conditions along the corridor
 - Obtained input on potential improvements
 - MetroQuest Survey conducted
 - August/September 2020 (virtual)
 - Presented proposed improvements
 - Obtained input on the proposed improvements

FM 1960 Crash Analysis (Years 2017-2021)



FM 1960 from East Gatewick Road to Interstate- (I) 69

FM 1960 Crash Analysis (Years 2017-2021)



2,635 Total Crashes



36% of Crashes at Intersections



20% of Crashes were Rear End Collisions



Speeding contributed to 40% of Crashes



71 Suspected Serious Injury

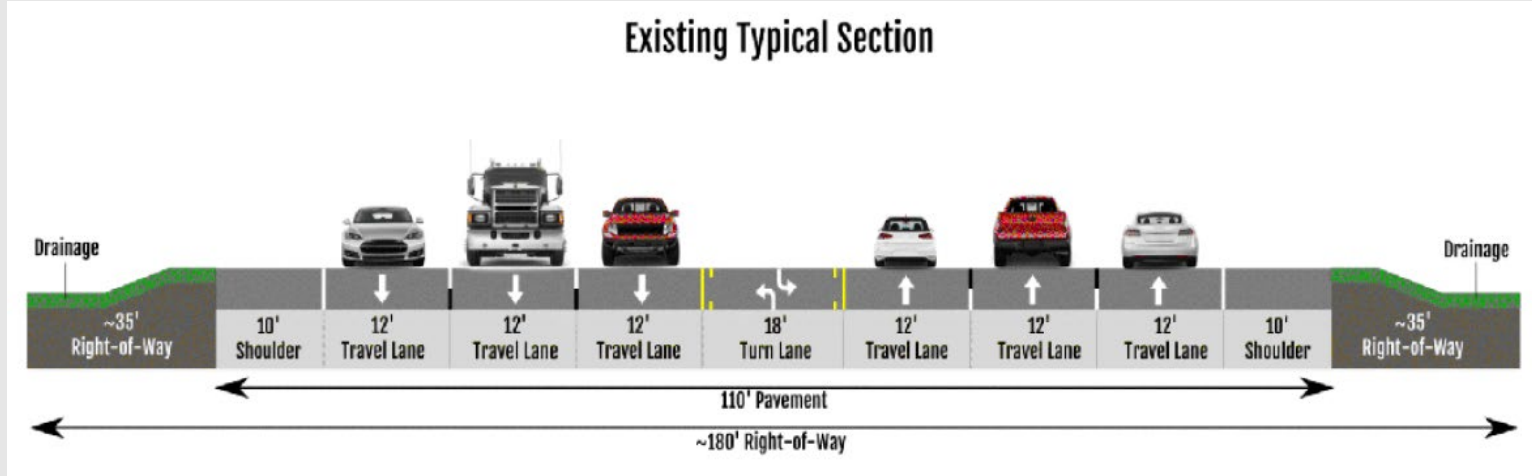


- Improvements for the proposed project include:
 - Raised landscape paver medians throughout the corridor
 - Signal timing improvements at 12 intersections along the corridor
 - Median openings and dedicated left-turn lanes to be located throughout the corridor

FM 1960 Existing Typical Section



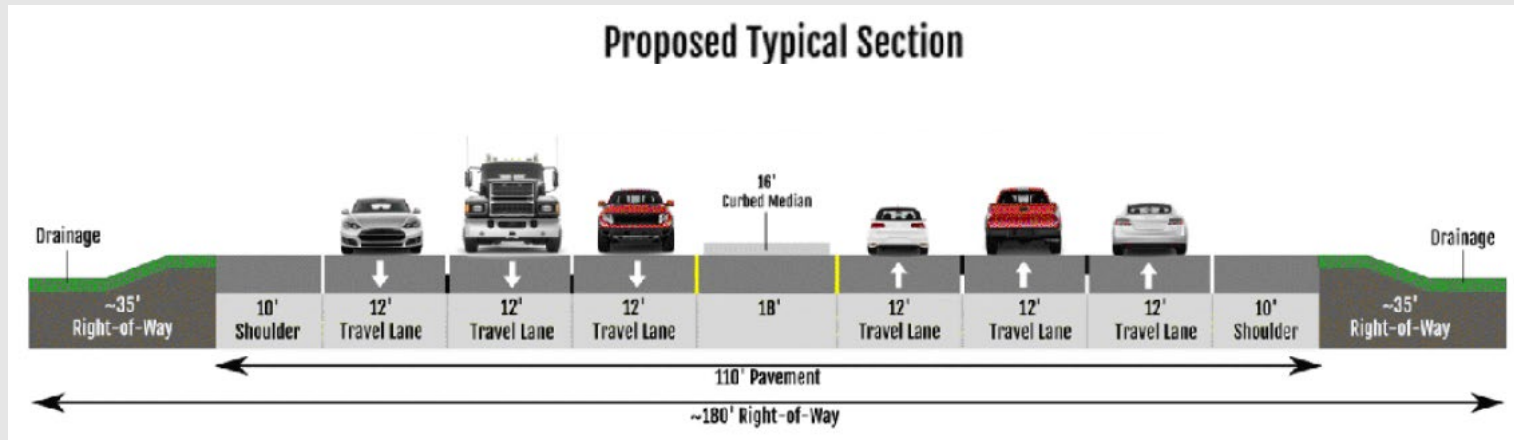
- Six 12-foot-wide travel lanes, three in each direction
- Continuous 18-foot-wide two-way left-turn lane in the center
- 10-foot-wide shoulders

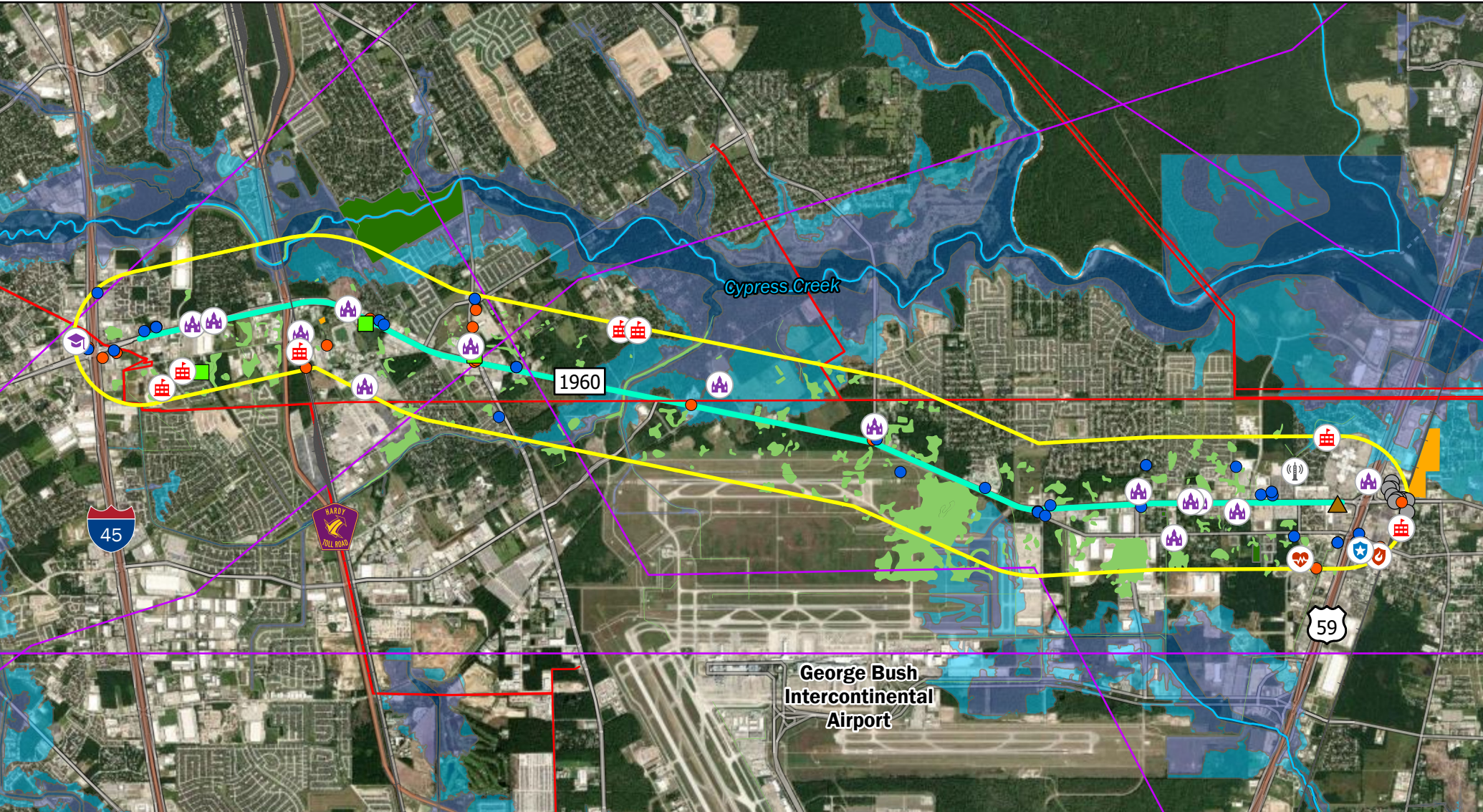


FM 1960 Proposed Typical Section



- Six 12-foot-wide travel lanes, three in each direction
- Continuous 16-foot-wide curbed median
- 10-foot-wide shoulders





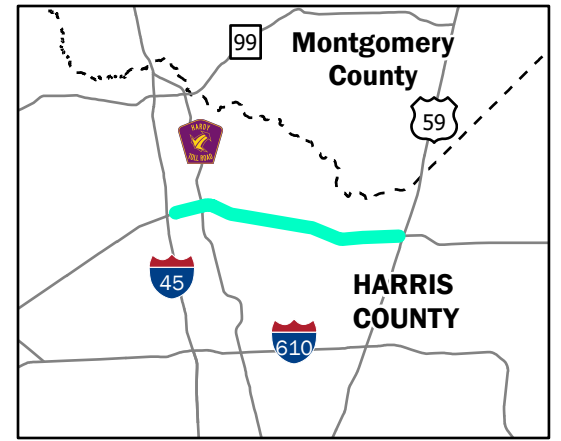
Environmental Constraints Map

FM 1960 From East Gatewick Road to I-69
 Thursday, August 18, 2022
 5 p.m. to 7:30 p.m.

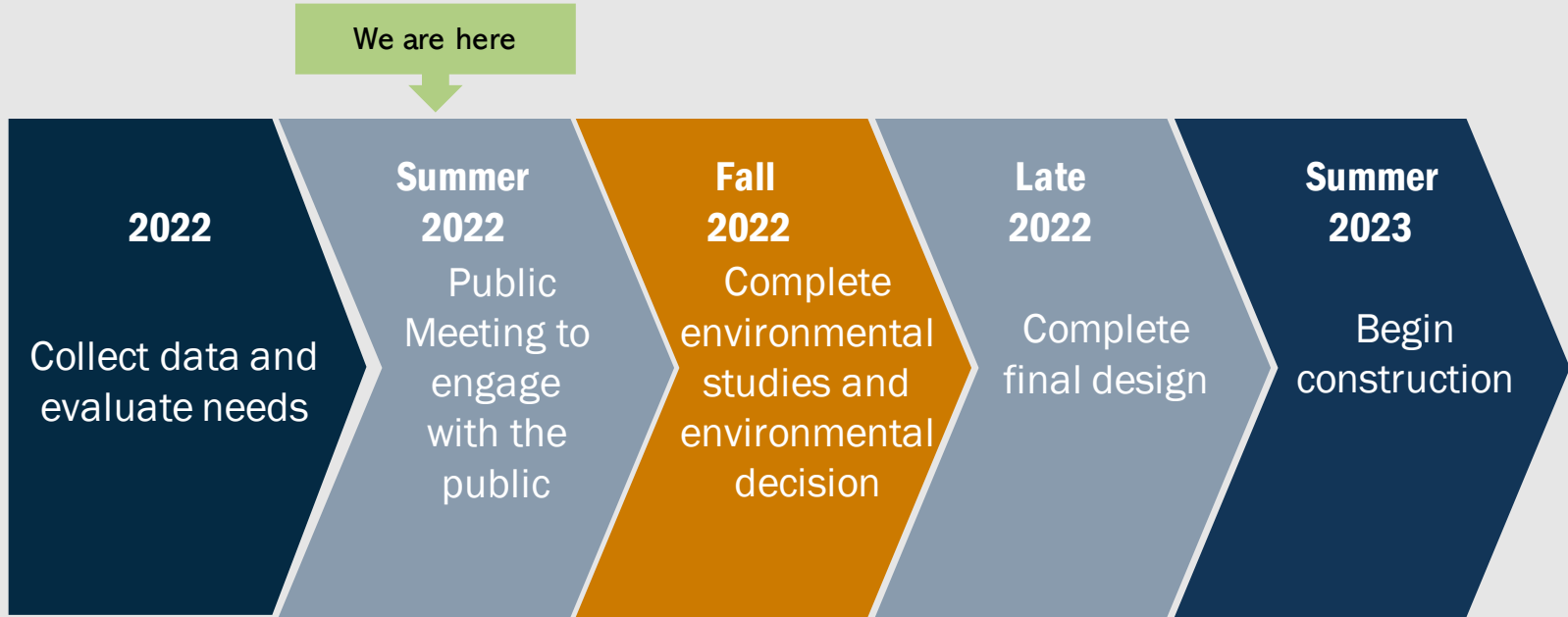
CSJ: 1685-02-057

July 2022

- Schools
- All Places of Worship
- Police Stations
- Fire Stations
- Hospitals
- Colleges and Universities
- Cellular Towers
- TCEQ Voluntary Cleanup Locations
- Petroleum Storage Tanks
- Leaking Petroleum Storage Tanks
- Industrial Hazardous Waste Corrective Action Locations
- Oil and Natural Gas Wells
- Half Mile Buffer
- Texas Railroads
- Oil and Gas Pipelines
- Electric Power Transmission Lines
- Waterways
- Project Limits FM 1960
- Cemeteries
- National Wetland Inventory (NWI) Wetlands
- Parks
- Floodway
- 100 Year Floodplain
- 500 Year Floodplain
- Waterbodies



FM 1960 Project Timeline and Next Steps



This schedule is approximate and subject to change.

Schematic-Legend



LEGEND



SIGNALIZED INTERSECTION



EXISTING LANE DIRECTION



EXISTING MEDIAN



PROPOSED MEDIAN (LANDSCAPE PAVERS)



PROPOSED STRIPING/LANE MARKINGS



PROPOSED STRIPING/LANE MARKINGS



How to Submit Your Written Comments for FM 1960



All comments must be received or postmarked by September 30, 2022.
Comments may be provided by:

Comment Card

Download the comment card from the webpage, fill it out and email or mail it to TxDOT

Email

Submit to:
HOU-PIOwebmail@txdot.gov

Mail

TxDOT Houston District Office
Advanced Project Development Director
P.O. Box 1386
Houston, TX 77251

Online

www.txdot.gov

Keyword Search: “FM 1960 from East Gatewick”

Click on the “Online Comment Form” under the downloads





**Thank you for participating in
this public meeting**

**Please remember to submit comments by
September 30, 2022.**



HELP
#EndTheStreakTX
End the streak of daily deaths on Texas roadways.

TxDOT.gov (Keyword: #EndTheStreakTX)



#EndTheStreakTX Toolkit

