



**Virtual Public Meeting with
In-Person Option**
Pre-Recorded Presentation

FM 1960
from East Gatewick Road to Interstate- (I) 69
Harris County, Texas

CSJ: 1685-02-056

September 2022

Script:

The Texas Department of Transportation Houston District would like to welcome you to the virtual public meeting with in-person option for the proposed Farm to Market (FM) 1960 road improvements project from East Gatewick Road to Interstate- (I) 69 in Harris County, Texas. This is a pre-recorded presentation. My name is Michael Zientek, and I am part of the project team working on this project. I would like to thank you for participating in this public meeting. This presentation is available for viewing starting on September 13, 2022. During the virtual public meeting, you may pause the presentation and navigate forward or backward using your video player.

FM 1960 Public Meeting Questions and Concerns



Please phone 713-802-5766 if you have:

- Problems accessing public meeting information online
- Request for special accommodations
- Language or interpretation needs other than English and Spanish

Details on how to submit an official comment will be provided further in the presentation.

Script:

If you experience technical difficulties with the virtual public meeting, please call Susanna Scott at the TxDOT Houston District office at (713) 802-5766. You may also request special accommodation assistance accessing public meeting information and materials and language interpretation needs other than English and Spanish. For general questions, contact information will be shown again toward the end of this presentation. If members of the public wish to submit a comment to be part of the official record of this public meeting, they may do so in the ways outlined at the end of this presentation.



IN-PERSON OPTION
Thursday, September 15, 2022
5 p.m. to 7:30 p.m.
Nimitz High School – Aldine ISD
2005 W.W. Thorne Drive
Houston, Texas 77073

Script:

This virtual public meeting is being held in conjunction with an in-person public meeting, which will be held on Thursday, September 15, 2022, from 5 p.m. to 7:30 p.m. at Nimitz High School-Aldine ISD, 2005 W.W. Thorne Drive, Houston, Texas 77073. The information presented in the virtual public meeting and the in-person public meeting is identical, and the opportunities to comment do not differ. This public meeting is being held to engage with the public and receive input regarding the proposed project. You are encouraged to submit comments on the proposed project after reviewing the meeting materials and listening to this presentation.



National Environmental Policy Act (NEPA) Assignment to the Texas Department of Transportation

The environmental review, consultation, and other actions required by applicable Federal environmental laws for this project are being, or have been, carried-out by TxDOT pursuant to 23 U.S.C. 327 and a Memorandum of Understanding dated December 9, 2019, and executed by the Federal Highway Administration (FHWA) and TxDOT.

Script:

The FM 1960 road improvements project is receiving federal funds, and because of the federal component, TxDOT is required to assess the potential environmental effects of the proposed project in accordance with Federal standards. The process that is followed is called the National Environmental Policy Act process, otherwise known as NEPA. The NEPA process provides analyses of the potential impacts to the natural and manmade environment and helps the decision maker to make an informed decision on whether or not to proceed with the project. On December 9, 2019, TxDOT received a signed Memorandum of Understanding from the Federal Highway Administration that permits TxDOT to assume responsibility from the Federal Highway Administration for reviewing and approving certain assigned NEPA projects. This review and approval process applies to this project.

FM 1960 Agenda



- Welcome
- Project Outreach & Notification Methods
- Purpose of the Public Meeting
- Project Overview
- Existing and Proposed Typical Sections
- Project Funding
- Timeline and Next Steps
- How to Submit Comments
- TxDOT Contact Information

Script:

In this presentation we will describe the proposed project and explain the purpose of the public meeting, provide a project overview, explain the proposed project's next steps, and outline the methods for submitting comments.

FM 1960 Outreach/Notification Methods



- Notices and information were posted to the TxDOT website on August 22, 2022
- Elected Official Letters were emailed and mailed on August 26, 2022
- Notices were mailed directly to adjacent property owners on September 1, 2022
- Messages were advertised on roadside variable message signs along FM 1960 from August 30, 2022, through September 15, 2022
- Flyers were posted in local community facilities and community boards on September 2, 2022
- Notices were emailed to 5 homeowner's associations (HOA) along FM 1960 on September 1, 2022
- Post cards of the meeting notice were sent using Every Door Direct on September 1, 2022
- Public Meeting Notices were published in:
 - Houston Chronicle Suburban Sections (Spring/Klein and Humble/Kingwood) on August 31, 2022
 - La Voz on September 7, 2022

Script:

Notices for this public meeting were posted to the TxDOT website on August 22, 2022, in both English and Spanish. Elected officials were notified by email on August 26, 2022, and mailed on August 26, 2022. Notices in both English and Spanish were then mailed to adjacent landowners on September 1, 2022.

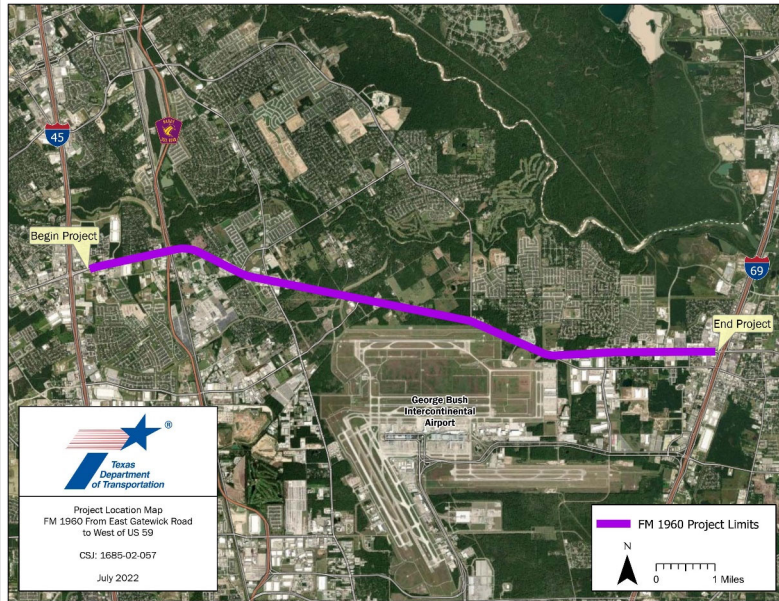
TxDOT advertised the meeting on roadside variable message signs along FM 1960 beginning August 30, 2022, through September 15, 2022. Informative flyers were posted on community boards and hand-delivered to local community facilities and gathering places on September 2, 2022.

Notices were emailed directly to five homeowner's associations along FM 1960 on September 1, 2022. Post cards were sent via Every Door Direct on September 1, 2022. And, finally, notices were also published in the Houston Chronicle Suburban Sections, Spring/Klein and Humble/Kingwood issues, and La Voz for a week each, on August 31, 2022, in English and on September 7, 2022, in Spanish.

FM 1960 Project Overview



- Project length:
Approximately 9 miles
- Located from East Gatewick Road to just west of Interstate- (I) 69
- Within Harris County, Texas



FM 1960 from East Gatewick Road to Interstate- (I) 69

September 2022

7

Script:

The proposed FM 1960 road improvements project extends for approximately 9 miles along FM 1960, from East Gatewick Road to just west of I-69, in Harris County. The proposed improvements would be constructed entirely within the existing right of way. No additional right of way or potential displacements are anticipated. Land use in the area is generally suburban with numerous commercial businesses and some residential areas. The purpose of the project is to improve mobility and enhance safety for the traveling public.



- Access Management Study was completed by TxDOT in December 2020 to:
 - Assess operational and safety needs for FM 1960
 - Identify safety and mobility improvements
 - To reduce crashes
 - Alleviate traffic congestion
 - Improve traffic flow
 - Improve access for existing and future development
- Study identified a high number of conflict points where crashes occur
- Improvements developed for the corridor were based on:
 - Traffic and safety analyses
 - Input from stakeholders and the public
- Schematics/preliminary design reflecting these improvements were developed for the corridor

Script:

TxDOT completed an Access Management Study in December 2020. The study was conducted to assess the operational and safety needs for the corridor, and to identify improvements that would improve safety and mobility, reduce crashes, alleviate traffic congestion, enhance multi-modal access, and support existing and future development. The study found that left turn and angle crashes accounted for 34 percent of all segment crashes from 2017 to 2021, indicating safety issues with existing access connections. Improvements for the corridor were developed based on traffic and safety analyses and input from stakeholders and the public. Schematics, also referred to as preliminary design, were then developed and reflect these proposed improvements.

Previous Stakeholder and Public Involvement



- Steering committee of government entities and community representatives
 - Met four times between June 2019 and December 2020
 - Identified stakeholders, provided input on known issues in the corridor, developed study goals, provided input on proposed improvements, helped with prioritizing proposed improvements
- Stakeholder engagement
 - Met five times between July 2019 and March 2020
 - Kept businesses and the community informed
 - Offered opportunities for input in the decision-making process

As part of the December 2020 access management study for the FM 1960 corridor, stakeholders and the public were engaged to share details of the existing conditions and request input on proposed solutions. A steering committee of government entities and community representatives met four times between June 2019 and December 2020. The steering committee identified stakeholders, provided input on known issues to establish existing conditions, developed study goals, provided input on the proposed improvements, and helped with prioritizing the proposed improvements.

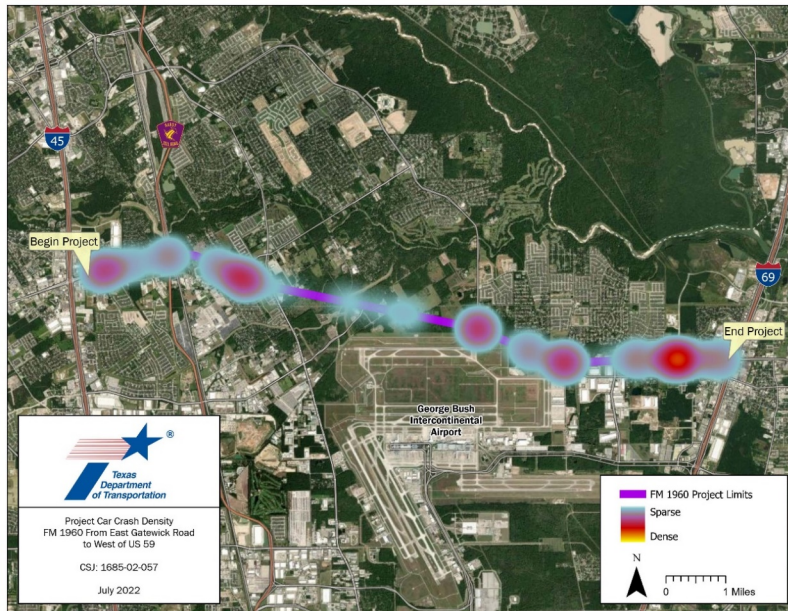
Stakeholder engagement provided opportunities for key organizations and businesses within the community to stay informed on the study's progress and offered opportunities for input in the study's decision-making process.



- Public Meetings
 - October 2019 (in-person)
 - Detailed information shared about the existing conditions along the corridor
 - MetroQuest Survey conducted
 - Obtained input on potential improvements
 - August/September 2020 (virtual)
 - Presented proposed improvements
 - Obtained input on the proposed improvements

Public meetings provided the opportunity for community members to express their concerns in the development of access management improvements in the corridor. The first round of public meetings was held in October 2019 and focused on discussing existing conditions along the corridor, obtaining public input on specific issues, and gauging interest on potential improvements. Attendees were encouraged to participate in an online MetroQuest survey to rank study goals and potential access management tools and to provide specific feedback on a map of the corridor. The second round of meetings was conducted virtually in August 2020 and focused on presenting and obtaining input on the proposed improvements selected to address the identified operational and safety needs of the corridor.

FM 1960 Crash Analysis (Years 2017-2021)



FM 1960 from East Gatewick Road to Interstate- (I) 69

September 2022

11

Script:

One of the goals for the project, identified in the 2020 Access Management Study, is to improve safety along the corridor. The project team analyzed crash data for the project corridor for the years 2017-2021. Locations of crashes were placed on maps, and circles are color coded where multiple crashes occurred in the same general location; these are called 'hot-spots.' The areas in red on the map show crash hot-spot locations where a high-density of crashes occurred in the corridor during this timeframe.

FM 1960 Crash Analysis (Years 2017-2021)



2,635 Total Crashes



36% of Crashes at Intersections



20% of Crashes were Rear End Collisions



Speeding contributed to 40% of Crashes



71 Suspected Serious Injury

Script:

Between 2017 and 2021, there were 2,635 total reported crashes in the corridor. Of these crashes, 36% occurred at intersections and 20% of those crashes involved rear-end collisions. TxDOT is proposing to install a raised median in place of the current center-turn lane in order to reduce the volume of traffic crossing the roadway between major intersections and improve safety in the corridor.

Proposed Corridor Improvements



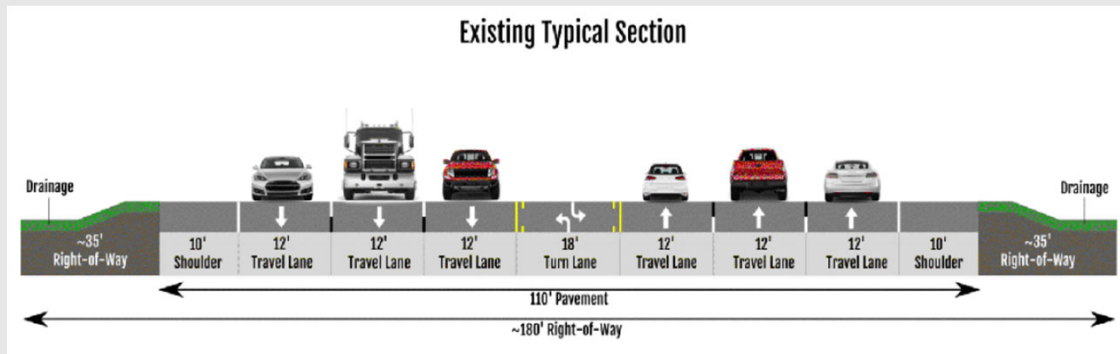
- Improvements for the proposed project include:
 - Raised landscape paver medians throughout the corridor
 - Signal timing improvements at 12 intersections along the corridor
 - Median openings and dedicated left-turn lanes to be located throughout the corridor

The Access Management Study proposed improvements for the corridor based on traffic and safety analyses and input from stakeholders and the public. Improvements for the proposed project include raised landscape paver medians throughout the corridor to reduce conflict points and improve traffic operations and safety. Signal timing improvements at 12 intersections along the corridor are also proposed. Median openings and dedicated left-turn lanes would be located along the corridor to allow for access to side streets and driveways. Please view the schematics presented at this meeting for locations of median openings and dedicated left-turn lanes.

FM 1960 Existing Typical Section



- Six 12-foot-wide travel lanes, three in each direction
- Continuous 18-foot-wide two-way left-turn lane in the center
- 10-foot-wide shoulders



FM 1960 from East Gatewick Road to Interstate- (I) 69

September 2022

14

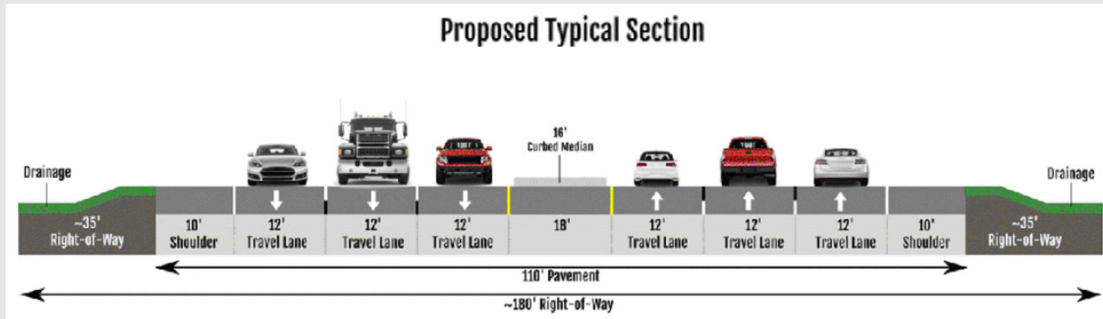
Script:

Next, I will show you the existing typical section. A typical section is intended to show a cross section of the road to illustrate what it looks like at specific locations. As you can see here, FM 1960 currently has three 12-foot-wide travel lanes with a continuous 18-foot-wide center turn lane, and 10-foot-wide shoulders in each direction through most of the corridor.

FM 1960 Proposed Typical Section



- Six 12-foot-wide travel lanes, three in each direction
- Continuous 16-foot-wide curbed median
- 10-foot-wide shoulders



FM 1960 from East Gatewick Road to Interstate- (I) 69

September 2022

15

Script:

The proposed typical section for the project has three 12-foot-wide travel lanes, a continuous 16-foot-wide curbed median, and 10-foot-wide shoulders in each direction.

FM 1960 Environmental Analysis Resource Areas



- Threatened and Endangered Species and Species of Greatest Conservation Need
- Surface Water Analysis



Just east of Richey Road, looking east



Just west of Kenswick Drive, looking west

Script:

The project team has evaluated potential environmental impacts that could occur as a result of constructing the proposed improvements. Areas that were reviewed include threatened and endangered species and water resources. This project would be constructed entirely within existing right of way and would be designed to avoid or minimize impacts to the greatest extent practicable. Documentation of the analysis and conclusions of these studies are available for review upon request. Contact information is available toward the end of this presentation.

FM 1960 Project Funding

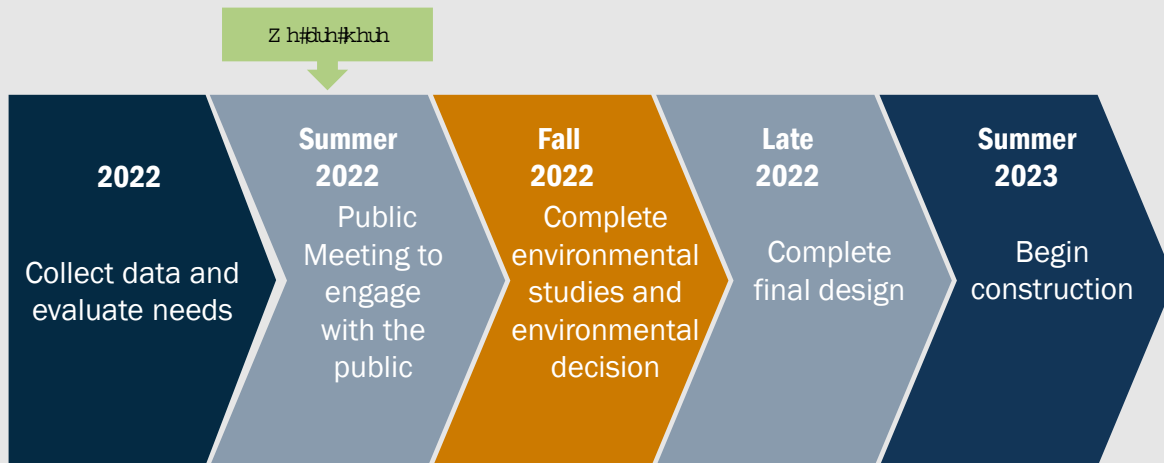


- The proposed project would be funded with a combination of Federal and State funds
- Total Project Estimated Cost: approximately \$4.5 million

Script:

The proposed project would be funded with a combination of federal and state funds for a total of approximately \$4.5 million.

FM 1960 Project Timeline and Next Steps



This schedule is approximate and subject to change.

Script:

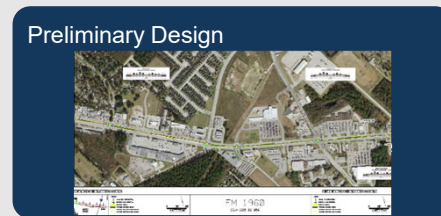
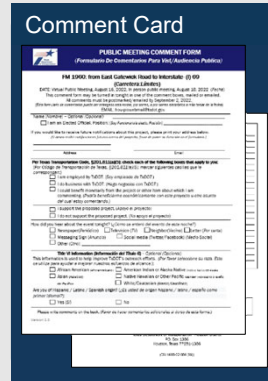
We want to highlight the estimated project timeline. Look for the green “We are here” arrow at the top of your screen. This public meeting is being held to engage with the public and receive input regarding the proposed project. After the comment period closes, TxDOT will review the comments received and prepare a public meeting summary report. The summary report will be posted to the project meeting webpage approximately three months after the close of the comment period. The next steps include receiving an environmental decision and refining the design schematic, if applicable. Construction is anticipated to begin in Summer 2023 and is estimated to take approximately twelve to eighteen months.

FM 1960 Public Meeting Materials



Public meeting materials are provided on the TxDOT meeting webpage:

- Public meeting exhibit boards
- Notice
- Comment card
- Fact sheet
- Preliminary design



Script:

The project meeting webpage contains all materials presented in this public meeting including this presentation, a comment card, and a project fact sheet in both English and Spanish, as well as exhibit boards and the project schematic. The preliminary project design provides a more in-depth look at median openings and the existing right of way. These files are large and may require more time to download than the other project materials.

Schematic-Legend



LEGEND



SIGNALIZED INTERSECTION



EXISTING LANE DIRECTION



EXISTING MEDIAN



PROPOSED MEDIAN (LANDSCAPE PAVERS)



PROPOSED STRIPING/LANE MARKINGS



PROPOSED STRIPING/LANE MARKINGS



FM 1960 from East Gatewick Road to Interstate- (I) 69

September 2022 20

Here is a screenshot of the legend and a portion of the preliminary project design found on the website. These legends are included on each page of the design for your reference. The screenshot on the right shows the colors that fill the preliminary design. These colors identify the limits and major aspects of the proposed project. Let's walk through them.

The aerial shows the main travel lanes on FM 1960. Areas in orange show the proposed raised medians.

The screenshot on the left shows the various types of lines you'll see. Of note, are the yellow lines that outline the proposed striping and lane markings.

How to Submit Your Written Comments for FM 1960



All comments must be received or postmarked by September 30, 2022.
Comments may be provided by:

Comment Card

Download the comment card from the webpage, fill it out and email or mail it to TxDOT

Email

Submit to:
HOU-PIOwebmail@txdot.gov

Mail

TxDOT Houston District Office
Advanced Project Development Director
P.O. Box 1386
Houston, TX 77251

Online

www.txdot.gov

Keyword Search: "FM 1960 from East Gatewick"

Click on the "Online Comment Form" under the downloads



SCAN ME

FM 1960 from East Gatewick Road to Interstate- (I) 69

September 2022

21

Script:

TxDOT encourages you to review the materials posted on the public meeting webpage and to provide written comments.

The comment form is located on the meeting webpage. Comments must be submitted online, by email, or mailed and postmarked by Friday, September 30, 2022, to be included in the official public meeting summary report.

You may submit written comments:

- Online by using the digital comment form at the link shown on your screen; you may access this same link on the project web page. You may also access the digital comment form by scanning the QR code link seen on your screen.

You may also submit written comments by using the comment card found in the downloads section of the public meeting on the project webpage.

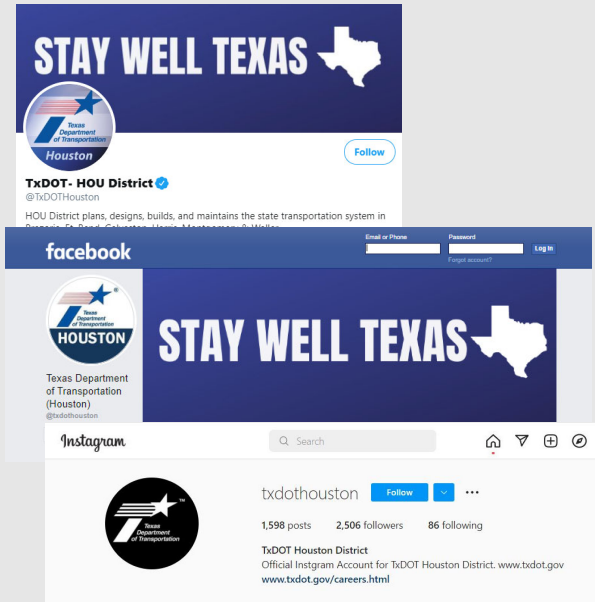
- You may email the comment card to HOU-PIOwebmail@txdot.gov, the email shown on this screen.
- Or you may mail the comment card to the TxDOT Houston District, Attention: Advanced Project Development Director, P.O. Box 1386, Houston, Texas 77251-1386, the address shown on this screen.

Again, responses to comments received during the comment period will be included in the Public Meeting Summary report that will be posted on the project meeting webpage in approximately three months after the close of the comment period. The project webpage is www.txdot.gov; keyword search "FM 1960 from East Gatewick".

Quick Contacts – Engage TxDOT Online



- Contact the TxDOT Project Manager anytime during the project development process
Susanna Scott
Call: (713) 802-5766
Email: Susanna.Scott@txdot.gov
- Follow us: Twitter - Houston:
<https://twitter.com/TxDOTHouston>
- Like us: TxDOT Facebook:
<https://www.facebook.com/txdothouston/>
- Follow us: Instagram:
<https://www.instagram.com/txdothouston/>



Script:

Please don't hesitate to contact us with any questions.

And please feel free to contact Susanna Scott at the TxDOT Houston District office at (713) 802-5766 or email her at, Susanna.Scott@txdot.gov, with any questions or comments at any time during the project development process. And don't forget to click on these links and follow us on Twitter for ongoing road closures and construction updates on the Houston District Twitter page. You may also keep up with TxDOT news on our Facebook page or follow us on our Instagram page.



**Thank you for participating in
this public meeting**

**Please remember to submit comments by
September 30, 2022.**

Script:

Thank you for participating in this public meeting.



HELP
#EndTheStreakTX
End the streak of daily deaths on Texas roadways.

TxDOT.gov (Keyword: #EndTheStreakTX)



#EndTheStreakTX Toolkit



FM 1960 from East Gatewick Road to Interstate- (I) 69

September 2022

November 7, 2000 was the last deathless day on roadways in Texas. That means for nearly 22 years, at least one person has died every single day. We all have a part to play to change that. This message is that reminder – to End the Streak of deaths on Texas highways. We need drivers and passengers to act more responsibly and help us reach our goal of zero deaths by 2050. Texans can play a major role in ending fatal crashes with a few simple driving habits: wear seatbelts, drive the speed limit, put away the phone and other distractions, and never drive under the influence of alcohol or drugs. So please do your part and share this message with your friends and family.