



Farm-to-Market (FM) 1960 Sidewalk Project from State Highway (SH) 249 to Interstate Highway (I) 45

Virtual Public Meeting
April 5, 2022 at 5:00 p.m. through
April 22, 2022 at 11:59 p.m.

In-Person Public Meeting
April 7, 2022
5:00 p.m. to 7:30 p.m.



Example of existing pedestrian paths along FM 1960

Project Summary

Project Location:

Harris County

Project Length:

Approximately 7 miles

Project Limits:

from SH 249 to I-45

Estimated Construction Cost:

Approximately \$10 million

Project Reference Number:

CSJ: 1685-01-120

Right-of-Way Required:

0.02 acre of new right-of-way

Potential Displacements:

No displacements

Construction Timeline:

Beginning Fall 2024 for approximately
1.5 years

Welcome to the Public Meeting

The Texas Department of Transportation (TxDOT) welcomes you to this public meeting for the proposed sidewalk project for FM 1960 from SH 249 to I-45 in Harris County, Texas. The purpose of this public meeting is to afford the public an opportunity to review and provide comments on the proposed project. This public meeting is being conducted both virtually and in-person. The virtual option includes a pre-recorded presentation in English and Spanish. You are invited to view the narrated presentation, exhibit boards and the proposed improvements on the schematic exhibit. The in-person option will include the same information and materials presented in the virtual option. Public comments are encouraged. Details on how to comment are on the following page.

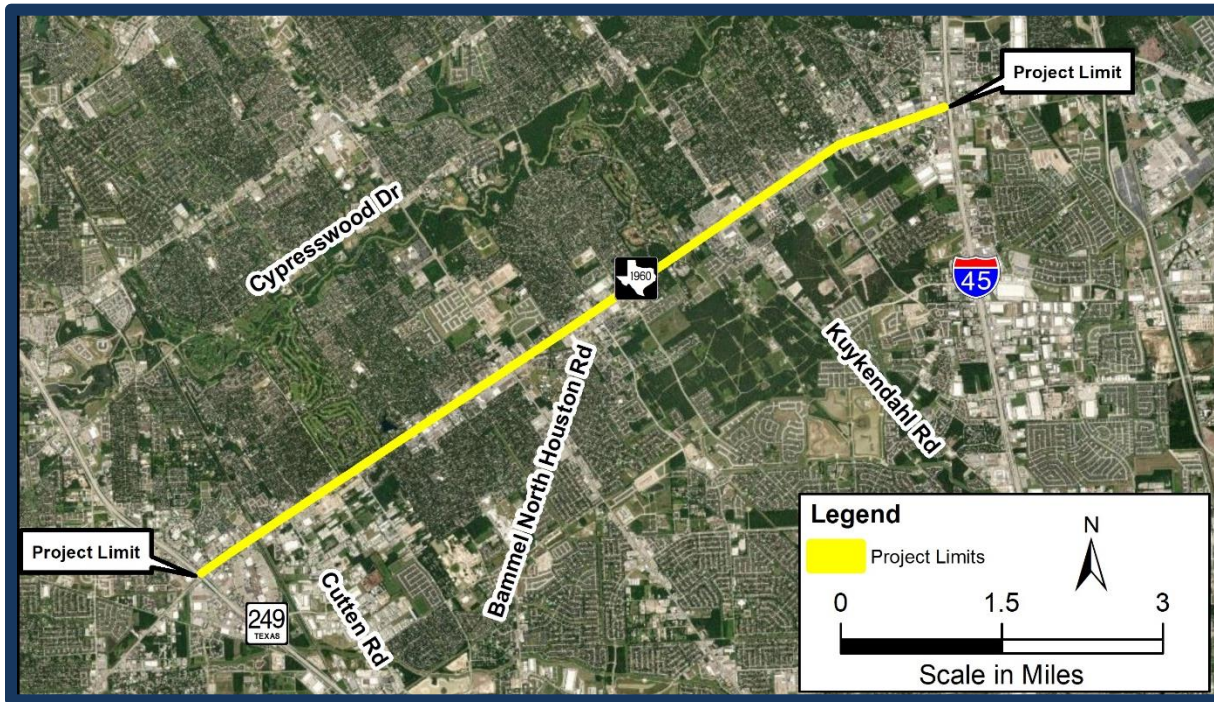
Existing Project Description

The existing roadway is a 6-lane divided roadway, which includes three 11-foot-wide main lanes in each direction and various 12-foot-wide left and right turn lanes. 12-foot-wide medians are located where there are no turn lanes. Sidewalks and Americans with Disabilities Act (ADA) ramps exist at the intersections and 3-foot-wide sidewalks are discontinuous throughout the project area.

Proposed Project Description

The proposed project would construct a 6-foot-wide continuous sidewalk along both sides of FM 1960. While the official limits extend from SH 249 to I-45, the sidewalk construction under this project would begin at Cutten Road and end at I-45. Project improvements would also include the installation or reconstruction of ADA ramps and installation or reconstruction of concrete pads for existing Metro bus stops where right of way allows. No improvements to the FM 1960 main lanes, turn lanes or medians are included in this project. The proposed project would primarily take place within existing right-of-way (ROW); however, approximately 0.02 acre of new ROW would be required. No displacements are anticipated.

Project Location Map



Why is this project proposed?

- Pedestrian accommodations are not consistently provided within the project limits
- To improve safety and accommodations for pedestrians along FM 1960

Next Steps

- Consider public comments (Spring 2022)
- Environmental decision and detailed design (Summer 2022)
- Letting date (Fall 2024)
- Begin construction (Early 2025)

How to Participate

VIRTUAL OPTION: Tuesday April 5, 2022 at 5:00 p.m. through Friday April 22, 2022 at 11:59 p.m.; visit www.txdot.gov, keyword search "FM 1960 from SH 249"

IN-PERSON OPTION: Thursday April 7, 2022 5:00 p.m. to 7:30 p.m. at Cypress Creek Christian Community Center, 6823 Cypresswood Drive, Spring, Texas 77379

How to Get Involved

The public is invited to participate in the project development process by reviewing the materials online or in person and submitting comments.

You may submit comments in English or Spanish in the following ways:

- Enter a comment directly online at the project website
- Download a comment card from the project website and send comments by U.S. Mail to:

**TxDOT Houston District
Advanced Project Development Director
Texas Department of Transportation
P.O. Box 1386
Houston, Texas 77251-1386**

- Or email comments to: HOU-PI0webmail@txdot.gov

All comments are due by **Friday April 22, 2022** in order to be considered in the official public meeting summary.

Documentation of this Public Meeting will be available online at the below web address approximately 3 months after the close of the comment period and will contain responses to all comments received by the due date.

Please reference the Project Reference Number (CSJ: 1685-01-120 (DD)) in all communication.

Project information and summaries of all public involvement events can be found online at: www.txdot.gov, keyword search "FM 1960 from SH 249"

EXISTING TYPICAL SECTION



PROPOSED TYPICAL SECTION



METRO BUS STOPS



Source: Google

Example photo of existing Metro bus stop along FM 1960 with no concrete pad



Source: Google

Example photo of how Metro bus stop with concrete pad would appear as proposed