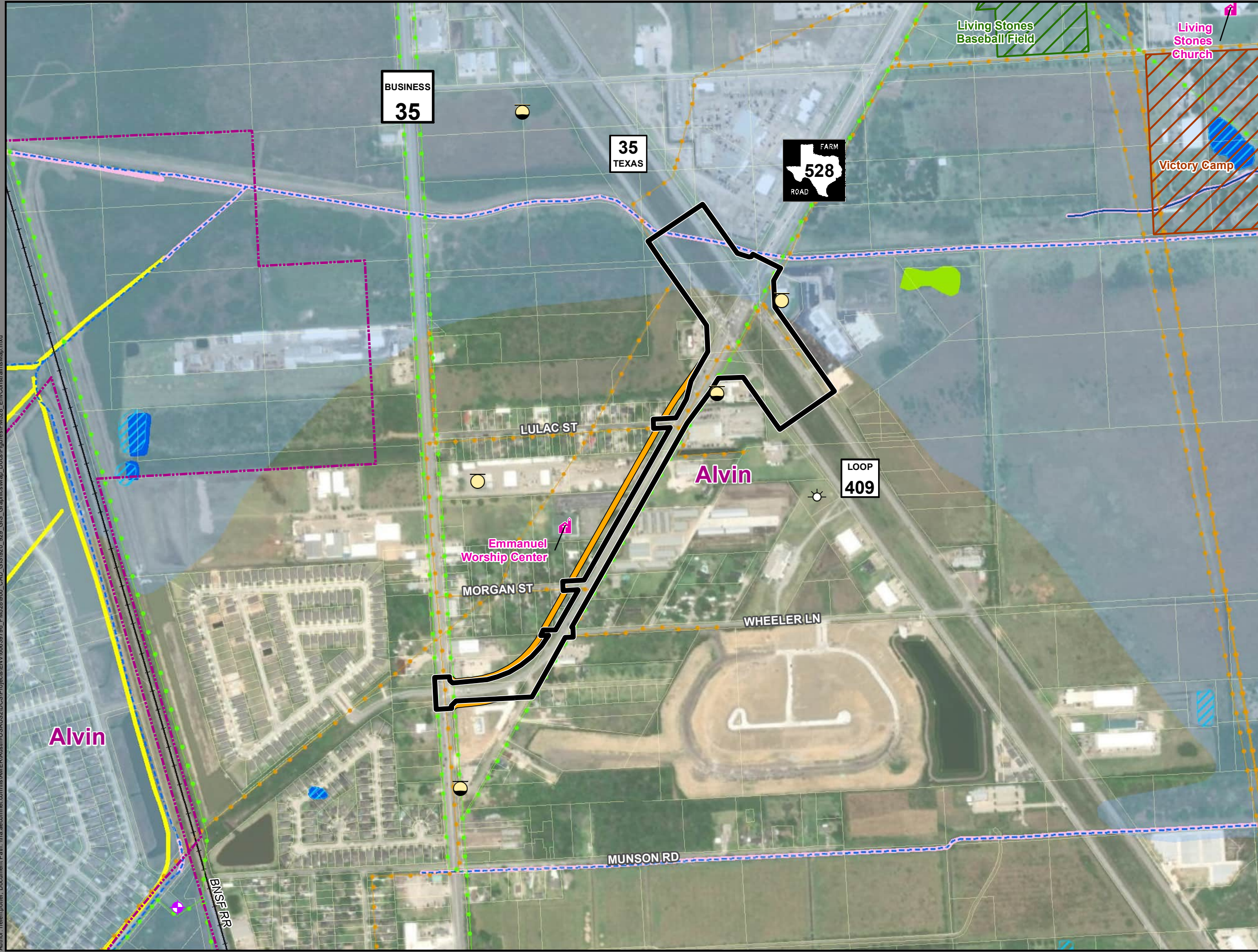
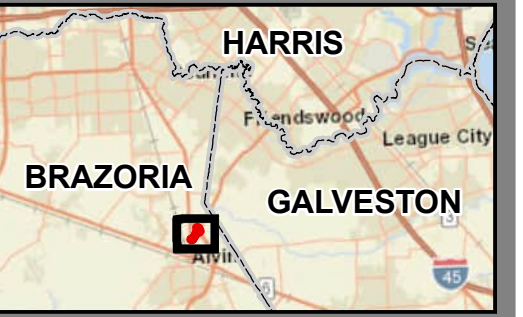


Author: helen.pattar; Document Path: \\na.aecomnet.com\is\AMER\Austin\US\US2\DCS\Projects\ENV\60639756_FM528\Map_Docs\Figures\FM528_EnvConstraintsMap.mxd



Environmental Constraints Map

FM 528
LP 409/BU 35/N. Gordon St.
Alvin, Brazoria County, Texas
CSJ: 1414-02-008



- Existing ROW
 - Proposed ROW
 - Parcel Boundary
 - City Boundary
 - Railroad
 - Place of Worship
 - School
 - Park
 - Campground
 - National Hydrography Dataset (NHD)**
 - Stream/River: Intermittent
 - Canal/Ditch
 - Lake/Pond: Perennial
 - National Wetlands Inventory (NWI)**
 - Freshwater Emergent Wetland
 - Freshwater Forested/Shrub Wetland
 - Freshwater Pond
 - Riverine
 - FEMA Flood Zone**
 - AO: 100-year Floodplain
 - Groundwater Well
 - Oil/Gas Well (Plugged and Abandoned)
 - Oil/Gas Pipeline
 - Electric Transmission Line
 - Leaking Petroleum Storage Tank (LPST)
 - Petroleum Storage Tank (PST)
- NOTE: No schools, medical facilities, police or fire stations, senior or child care centers, historic sites, or cemeteries were found within the mapped area.
- Basemap: Maxar 4/8/2022

