

# Gulf Freeway Planning and Environmental Linkages (PEL) Study: I-45S from I-69/US 59 (Downtown) to Beltway 8 South

## What is a PEL Study?

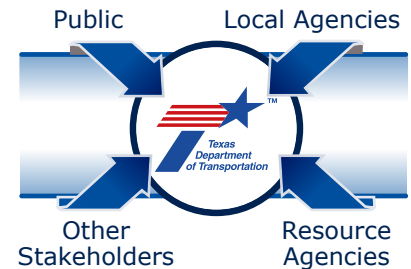
A PEL Study is a high-level, early-planning study process that represents an approach to transportation decision making that considers environmental, community, and economic goals early in the planning stage and carries them through project development, design and construction. The goal of the PEL studies is to gather feedback during planning to inform the environmental review process, including the National Environmental Policy Act (NEPA). The Texas Department of Transportation (TxDOT) is conducting a PEL study that accomplishes the following:

- Develops transportation solutions with full consideration of public input and local, State, and Federal agency priorities
- Minimizes duplication of effort
- Promotes the most efficient and cost-effective solutions
- Identifies future project development goals

A PEL Study can help inform project decisions, develop a corridor vision to inform the purpose and need statement, and be a platform for the community to discuss and prioritize transportation issues and project implementation.

A PEL study will follow Federal Highway Administration (FHWA) guidelines for PEL documents. The information collected may be used to guide future phases of the project.

## PEL Study Coordination

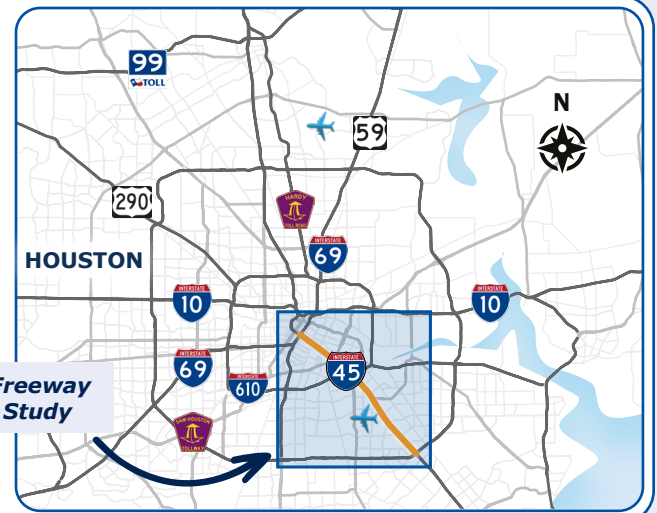


## Why is TxDOT preparing a PEL Study for Gulf Freeway (I-45S)?

TxDOT is preparing a PEL for the Gulf Freeway (I-45S) to address concerns and need for improvements with traffic, safety, and future growth.

Benefits of a PEL study include the following:

- Helps with planning for the Gulf Freeway corridor
- Streamlines future projects along the Gulf Freeway
- Engages the public and stakeholders in the planning process
- Enhances collaboration among agencies
- Identifies key environmental resource issues



### Questions or Need More Information:

**Call:** 713-802-5000, reference Gulf Freeway PEL Study (CSJ 0500-03-633)  
**Email:** IH45SouthPEL@txdot.gov

### Provide Comments on the Study:

**Mail:** TxDOT Houston District  
 Attn: Dir. District Transportation Planning  
 P.O.Box 1386  
 Houston, Texas 77251-1386  
**Email:** HOU-PIOwebmail@txdot.gov

**We want to hear from you! Please fill out a comment card.  
 Comment period is open through Friday, October 3, 2025**

*As provided for by 23 Code of Federal Regulations (CFR) 450.212, 23 CFR 450.318, and Appendix A to 23 CFR Part 450, the results or decisions of this PEL study may be incorporated into or used as part of the review of one or more projects under the National Environmental Policy Act, otherwise known as NEPA, which would be carried-out by TxDOT pursuant to 23 United States Code (USC) 327 and a Memorandum of Understanding dated July 17, 2025, and executed by the Federal Highway Administration (FHWA) and TxDOT.*

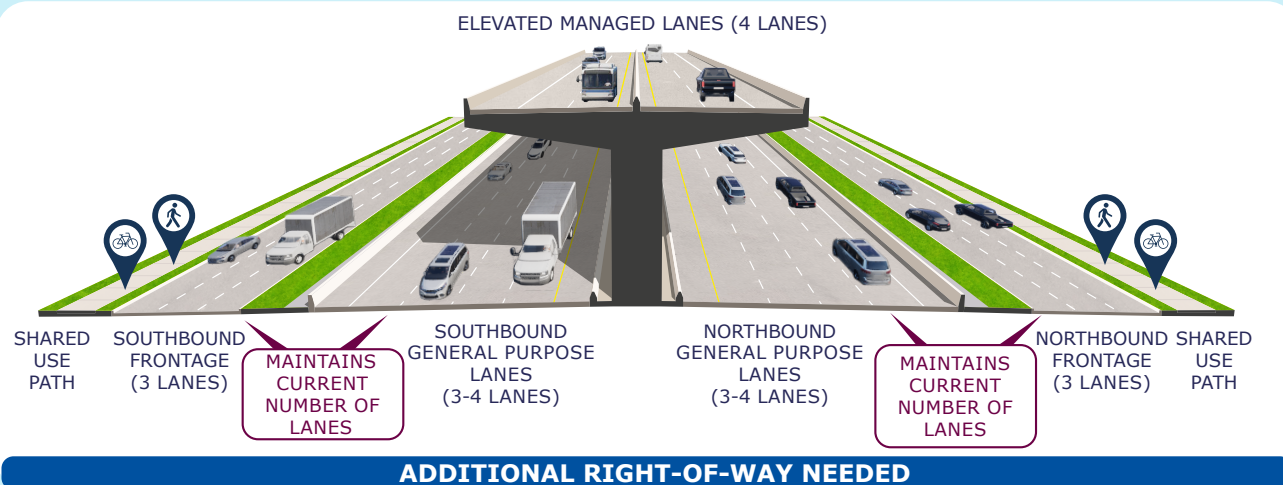
## Recommended Alternatives

The recommended alternatives were identified from the quantitative and qualitative evaluation of the reasonable alternatives. The two Gulf Freeway PEL Study recommended alternatives include:

- Elevated Managed Lanes
- Frontage Road Improvements
- Multimodal Hubs
- Intersection Improvements
- Ramp Modifications
- Bicycle and Pedestrian Accommodations

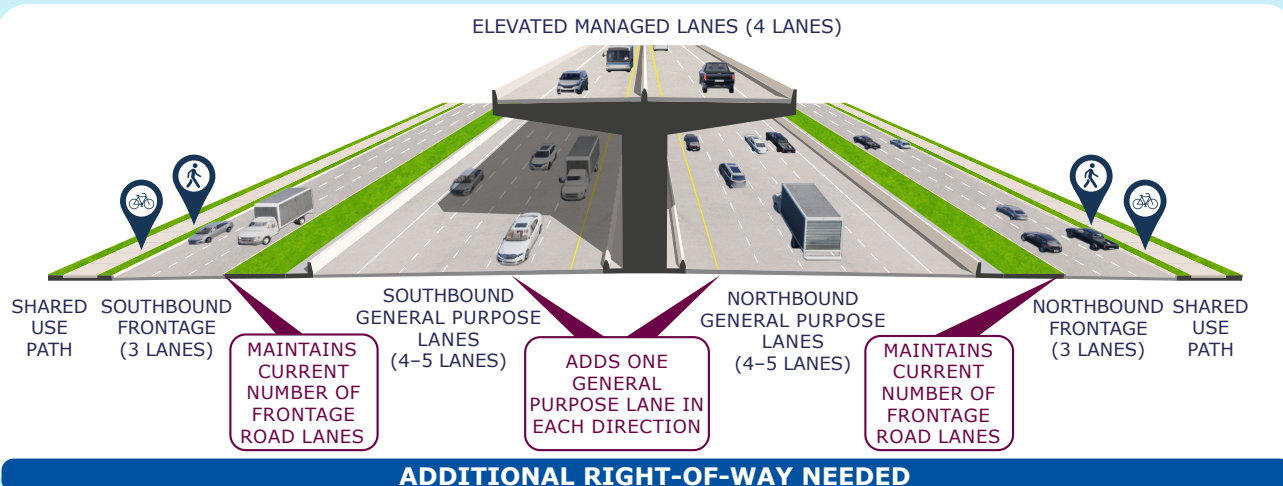
### Alternative C

Convert existing reversible HOV/HOT lane to four elevated managed lanes, maintain existing number of lanes, and upgrade the corridor to current design standards.



### Alternative F

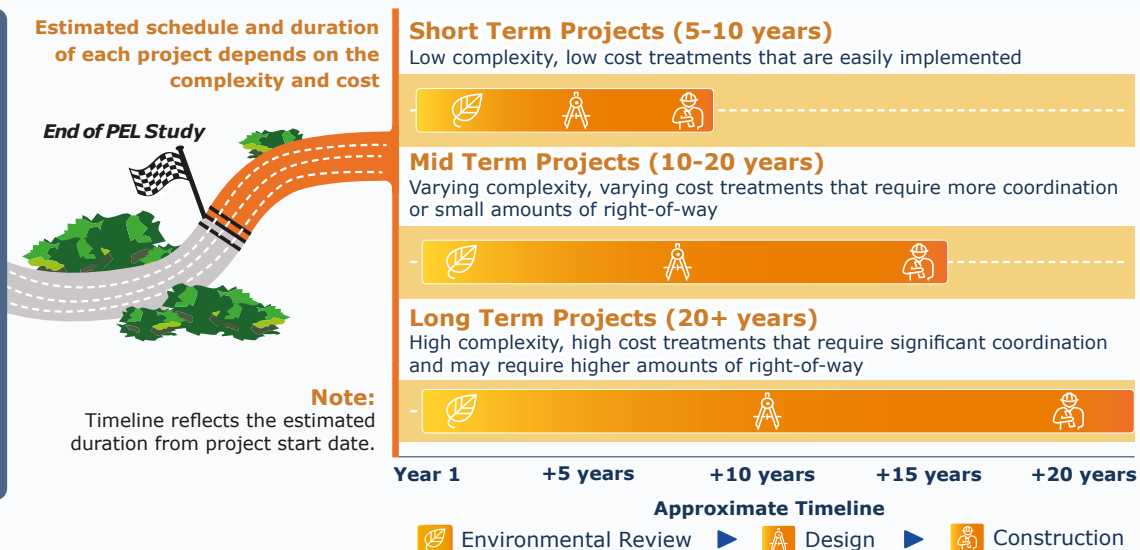
Convert existing reversible HOV/HOT lane to four elevated managed lanes, provide two additional general purpose lanes, and upgrade the corridor to current design standards.



## Future Project Time Frames

The recommended alternatives may fall into different future project implementation time frames based on the proposed improvement complexity and cost.

\* Alternatives recommended at the PEL study's conclusion may become future projects and would be subject to modification during the project development process.



## Next Steps: What happens after the PEL Study?

### Potential future projects may be sponsored by TxDOT or another agency/jurisdiction

These projects may be subject to NEPA and the project development process, which include:

#### Environmental Review (NEPA) Resource Areas

- Air quality
- Historic and cultural resources
- Community impacts
- Hazardous materials
- Natural resources
- Traffic noise
- Parks
- Wetlands and waters of the United States
- Visual impacts
- Indirect and cumulative resources (if required)

#### Project Development

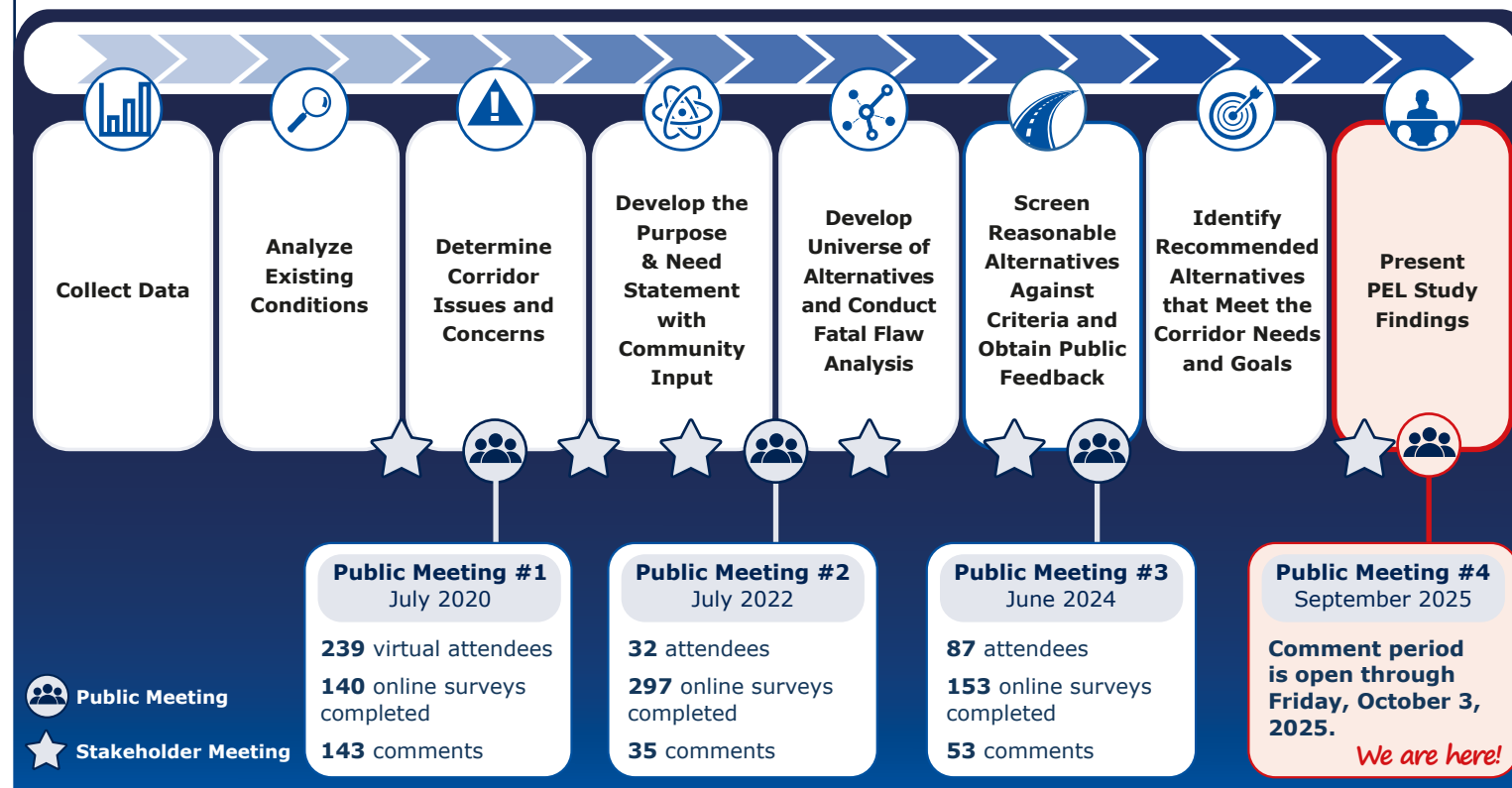
- Preliminary engineering
- Final alignment determined
- Right-of-way needs evaluated
- Funding sources identified
- Drainage needs evaluated



### Continued Public Involvement and Stakeholder Engagement

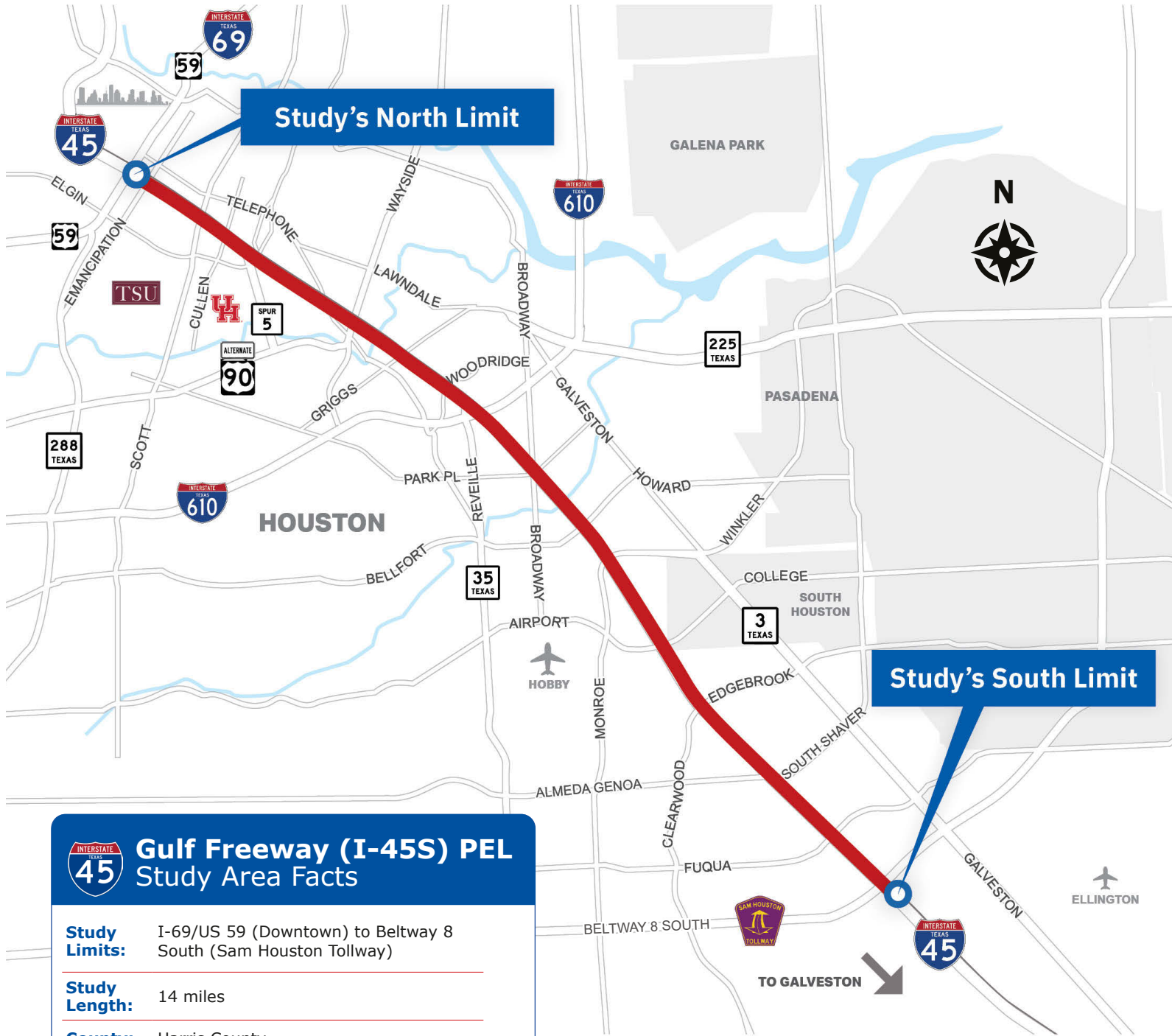
## Study Timeline: Fall 2019 - Fall 2025


Throughout the PEL study process, TxDOT has conducted four public meetings and six stakeholder meetings at major study milestones. At each of the public meetings, TxDOT asked for feedback using interactive exhibit boards, paper surveys, online surveys, and comment cards. Feedback was also obtained during the stakeholder meetings. The final PEL study recommended alternatives were developed through public and stakeholder engagement.



# Gulf Freeway PEL Study

## I-45S from I-69/US 59 (Downtown) to Beltway 8 South



 **Gulf Freeway (I-45S) PEL Study Area Facts**

<b>Study Limits:</b>	I-69/US 59 (Downtown) to Beltway 8 South (Sam Houston Tollway)
<b>Study Length:</b>	14 miles
<b>County:</b>	Harris County
<b>Cities:</b>	Houston, South Houston
<b>Places of Interest:</b>	Downtown, Midtown, East Downtown and East End communities, University of Houston, Texas Southern University, Gulfgate Center, Hobby Airport