



# I-45N: Beltway 8 North to Loop 336 South (Conroe) Planning and Environmental Linkages (PEL) Study



## What is a PEL?

The Planning and Environmental Linkages (PEL) process is a high level approach to transportation decision making that considers environmental, community, and economic goals early in the planning stage. The Texas Department of Transportation (TxDOT) is conducting a PEL study for a seamless decision-making process that accomplishes the following:

- Minimize duplication of effort
- Promote the most efficient and cost-effective solutions
- Carry goals through future project phases

In all PEL studies, the goal is to gather information during planning to inform the environmental review process, including the National Environmental Policy Act of 1969 (NEPA).

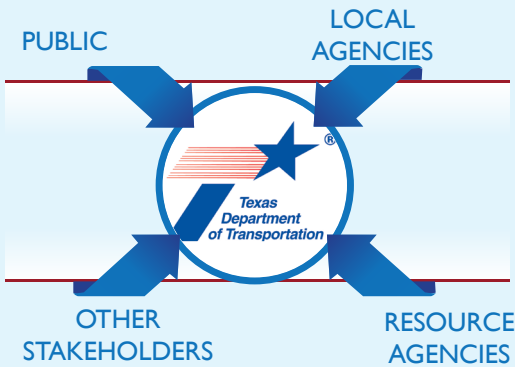


## Why is TxDOT preparing a PEL for I-45N?

TxDOT is preparing a PEL for I-45N to address concerns and needs for improvement with traffic, safety, and future growth. This I-45N PEL Study can help inform planning decisions, streamline the NEPA process, and be a platform for the community to discuss and prioritize transportation issues and project implementation. Benefits of a PEL study include the following:

- Helps with planning for the I-45N corridor
- Streamlines future projects along I-45N
- Engages the public and stakeholders in the planning process
- Enhances collaboration among agencies
- Identifies key environmental resource issues

## PEL Coordination



## For more information:

### Contact:

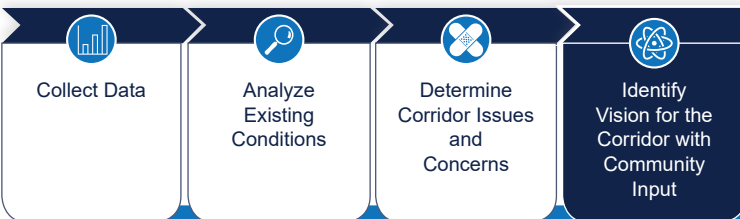
Cesar Martinez, Project Development  
7600 Washington, Ave. Houston, TX 77007  
Tel. 713.802.5279 | Cesar.Martinez1@txdot.gov

### Visit:

<http://www.txdot.gov/inside-txdot/projects/studies/houston/houston-pel-i-45.html>

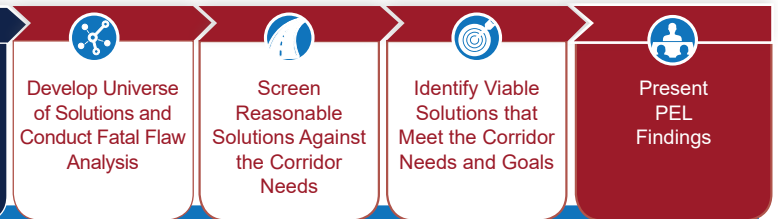
## PEL Process PHASE I

Spring 2017 - Fall 2018



## PHASE 2

Spring 2019 - Spring 2021

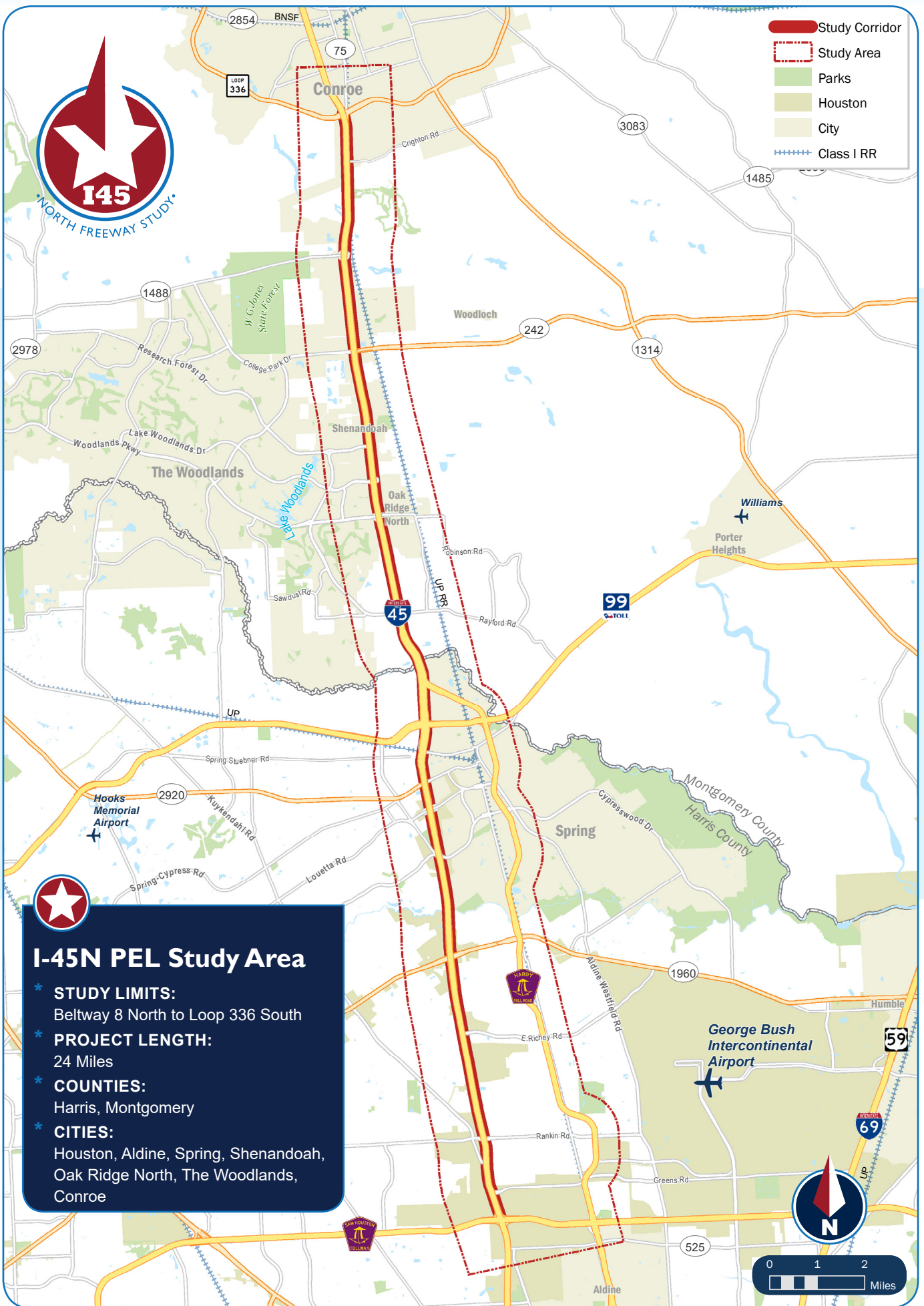


**Ongoing Public and Stakeholder Involvement**

Future NEPA studies, environmental review, consultation and other actions required by applicable Federal environmental laws for projects associated with the I-45N: Beltway 8 North to Loop 336 South (Conroe) Planning and Environmental Linkages Study are being, or have been carried out by TxDOT pursuant to 23 USC 327 and a MOU dated December 16, 2014 by FHWA and TxDOT.



- Study Corridor
- Study Area
- Parks
- Houston
- City
- Class I RR



### I-45N PEL Study Area

- \* **STUDY LIMITS:**  
Beltway 8 North to Loop 336 South
- \* **PROJECT LENGTH:**  
24 Miles
- \* **COUNTIES:**  
Harris, Montgomery
- \* **CITIES:**  
Houston, Aldine, Spring, Shenandoah,  
Oak Ridge North, The Woodlands,  
Conroe

