

Legend

----- Existing ROW	—— Edge of Pavement	■ Corner Clip
- - - - Proposed ROW	— Sidewalk	▨ Temporary Easement
—— Project Design	■ Roadway	▨ Road to be Demolished

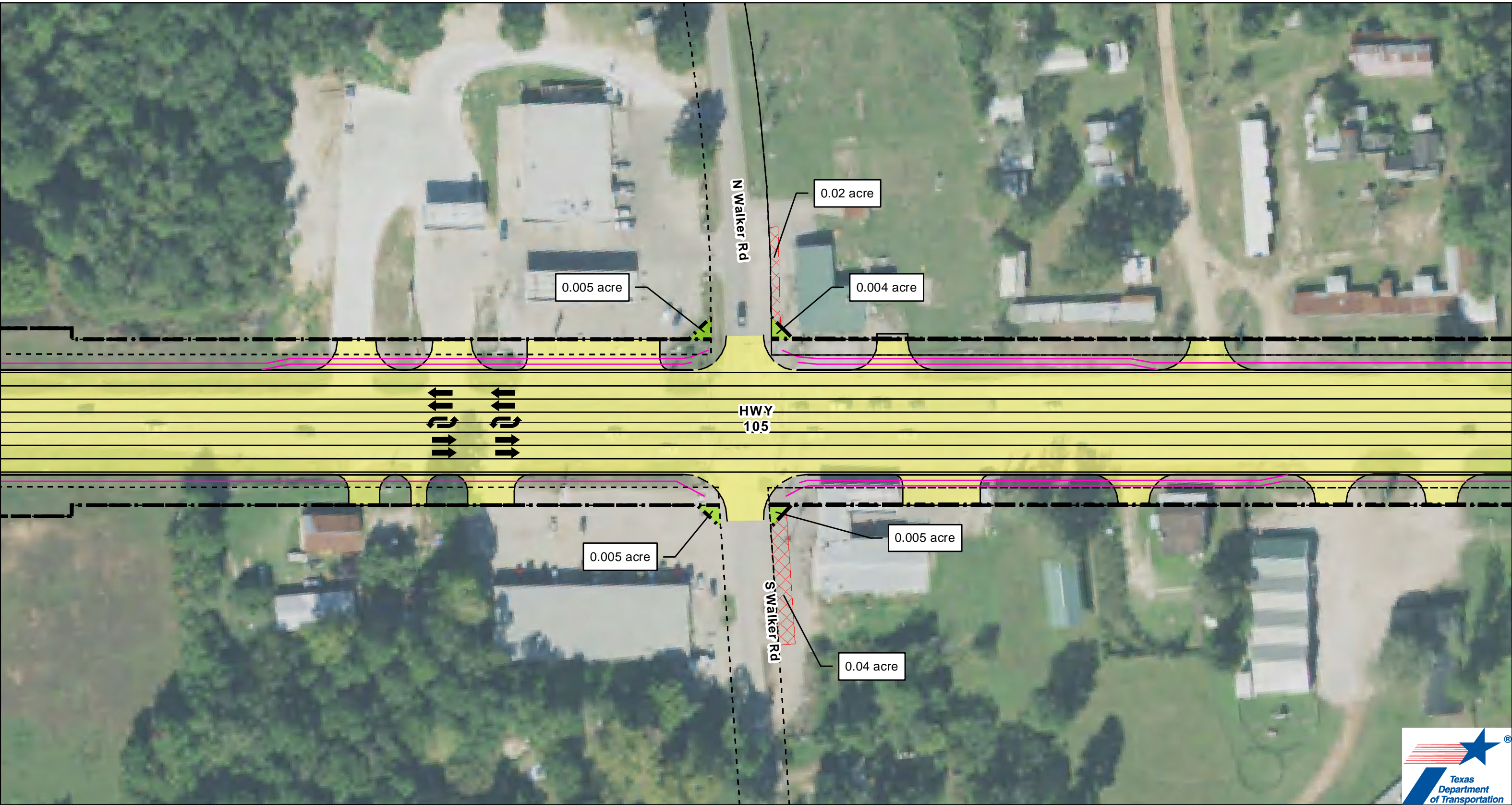
SH 105
From 10th Street in Conroe to Business 105
Montgomery, San Jacinto, and Liberty Counties, Texas

Temporary Easements and Corner Clips
Page 1 of 2

0 25 50 100 Feet

Texas Department of Transportation

Basemap: TNRIS (2020)



Legend		
----- Existing ROW	— Edge of Pavement	█ Corner Clip
- - - - Proposed ROW	— Sidewalk	▨ Temporary Easement
— Project Design	█ Roadway	▨ Road to be Demolished

SH 105
From 10th Street in Conroe to Business 105
Montgomery, San Jacinto, and Liberty Counties, Texas

Temporary Easements and Corner Clips
Page 2 of 2

0 25 50 100 Feet

Basemap: TNRS (2020)