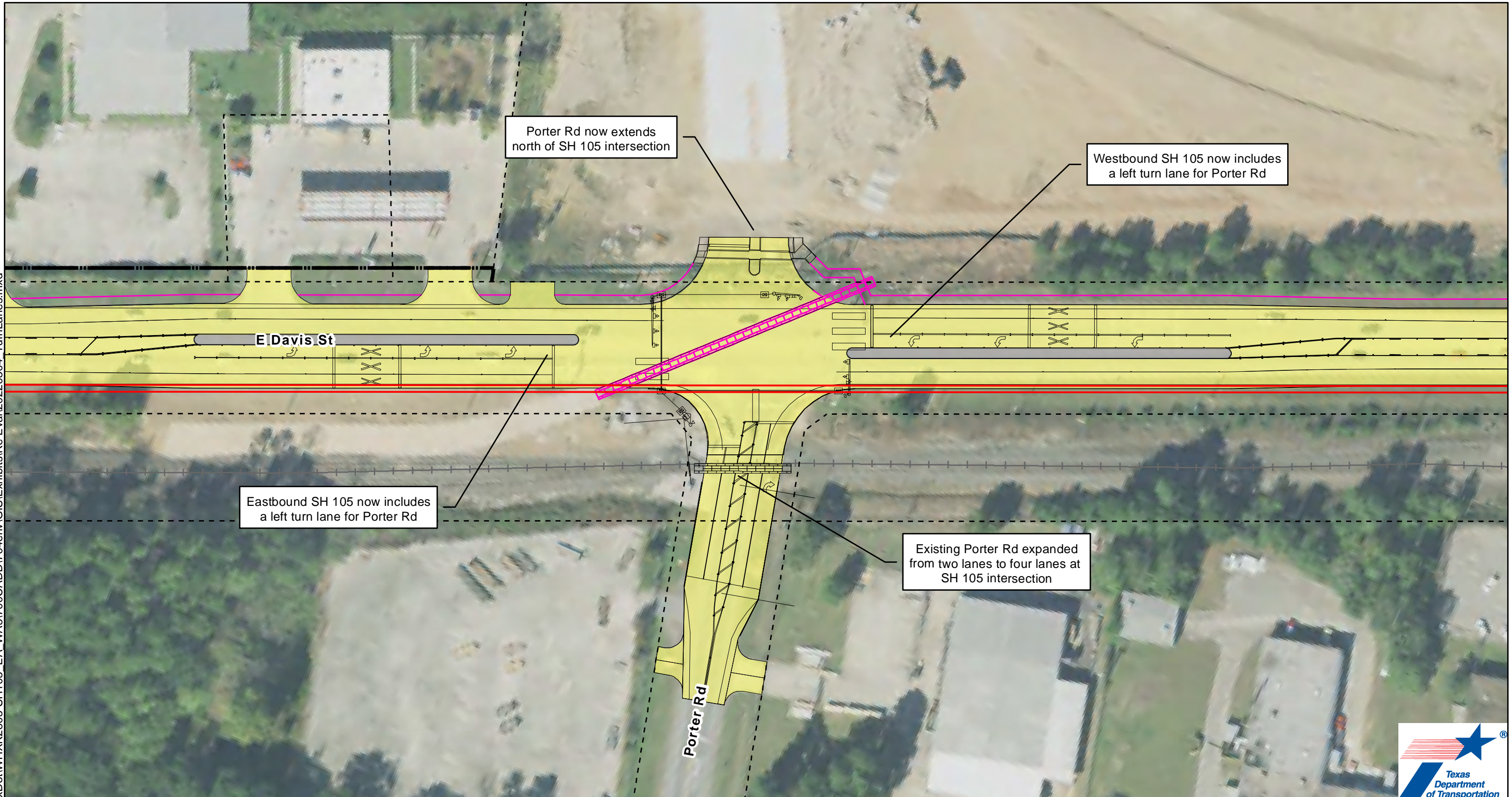


Document Path: I:\BIA\BIA01\TxDot\W\HXK2805-SH105\_EA\_WA51700C\ADD\704env\GIS\Exhibits\Re Eval\20220304\_TurnLanes.mxd



Legend		
-----	Existing ROW	— Sidewalk
- - - - -	Proposed ROW	— Removed Sidewalk
—	Project Design	— Roadway
		— Bridge
		— Median

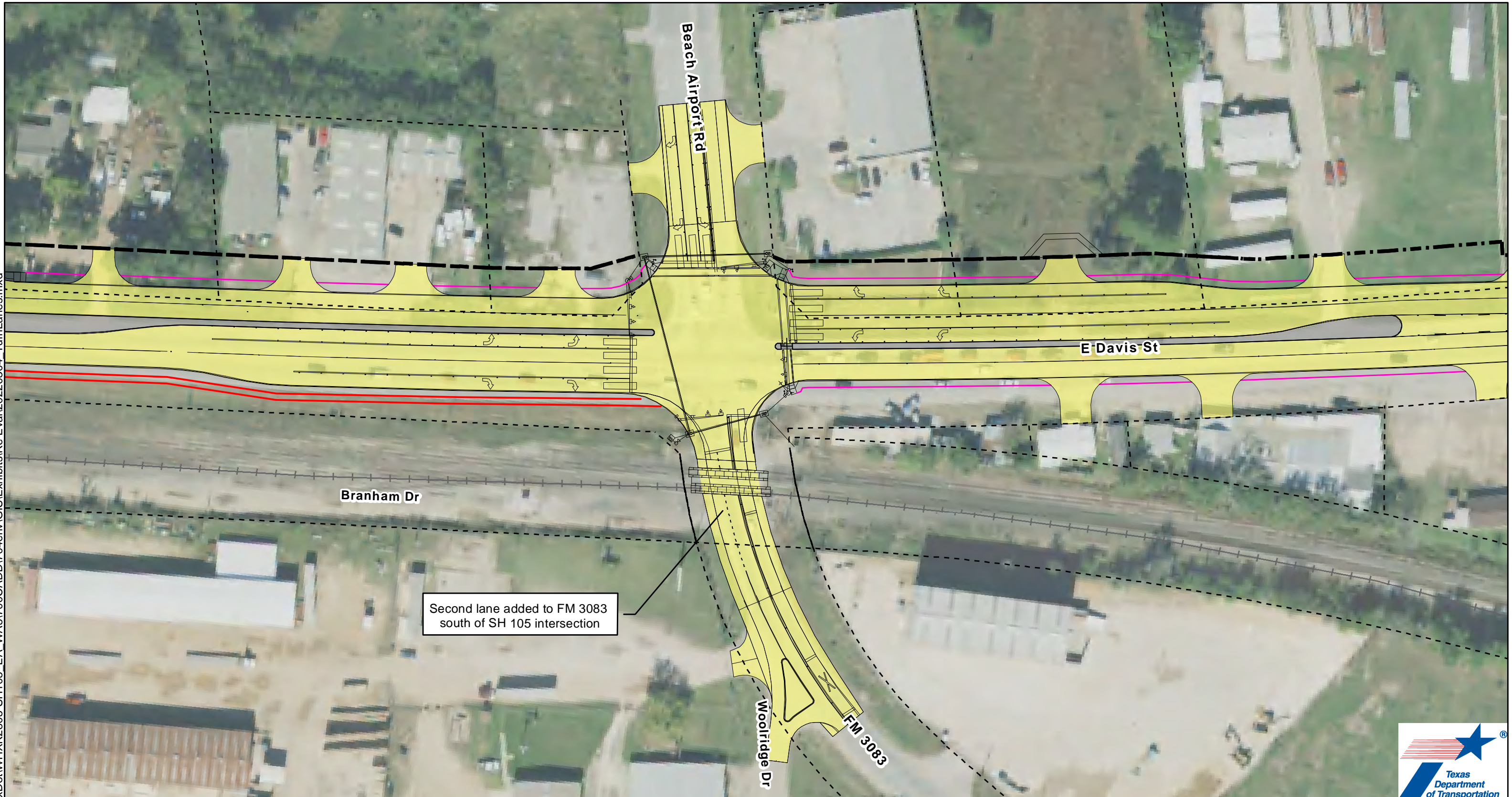
**SH 105**  
From 10th Street in Conroe to Business 105  
Montgomery, San Jacinto, and Liberty Counties, Texas

**Intersection Turn Lanes**  
Page 1 of 2

0 20 40 80  
Feet



Document Path: I:\BIA\BIA01\TxDot\WHXK2805-SH105\_EA\_WA5\700C\ADD\704env\GIS\Exhibits\Re Eval\20220304\_TurnLanes.mxd



**Legend**

----- Existing ROW	— Sidewalk	Bridge
- - - - Proposed ROW	— Removed Sidewalk	Median
— Project Design	— Roadway	

SH 105  
From 10th Street in Conroe to Business 105  
Montgomery, San Jacinto, and Liberty Counties, Texas

Intersection Turn Lanes  
Page 2 of 2

0 20 40 80 Feet