



TEXAS DEPARTMENT OF TRANSPORTATION

WELCOME!

STATE HIGHWAY 6 (SH 6) ACCESS MANAGEMENT STUDY FROM EAST OF STATE HIGHWAY 35 TO BRAZORIA/GALVESTON COUNTY LINE

Why am I
here?

Learn about the proposed improvements

Share knowledge about the corridor

Provide feedback to help us refine the improvements

VIRTUAL PUBLIC MEETING: AVAILABLE STARTING FEB. 12, 2024

IN-PERSON PUBLIC MEETING: FEB. 13, 2024

The environmental review, consultation, and other actions required by applicable Federal environmental laws for this project are being, or have been, carried-out by TxDOT pursuant to 23 U.S.C. 327 and a Memorandum of Understanding dated December 9, 2019, and executed by FHWA and TxDOT.

Alvin Community College, Nolan Ryan Center (R Building) | 2925 Bypass 35 South, Alvin, TX 77511



Study Goals

Access Management is the systematic control of the number, spacing, and operations of intersections and driveways to preserve safety and efficiency on a roadway.

Study Goals



Improve Safety

by reducing the crash rate and severity



Improve Mobility

by balancing land use needs and transportation access



Improve Multi-modal Access

for pedestrians, cyclists, and transit users

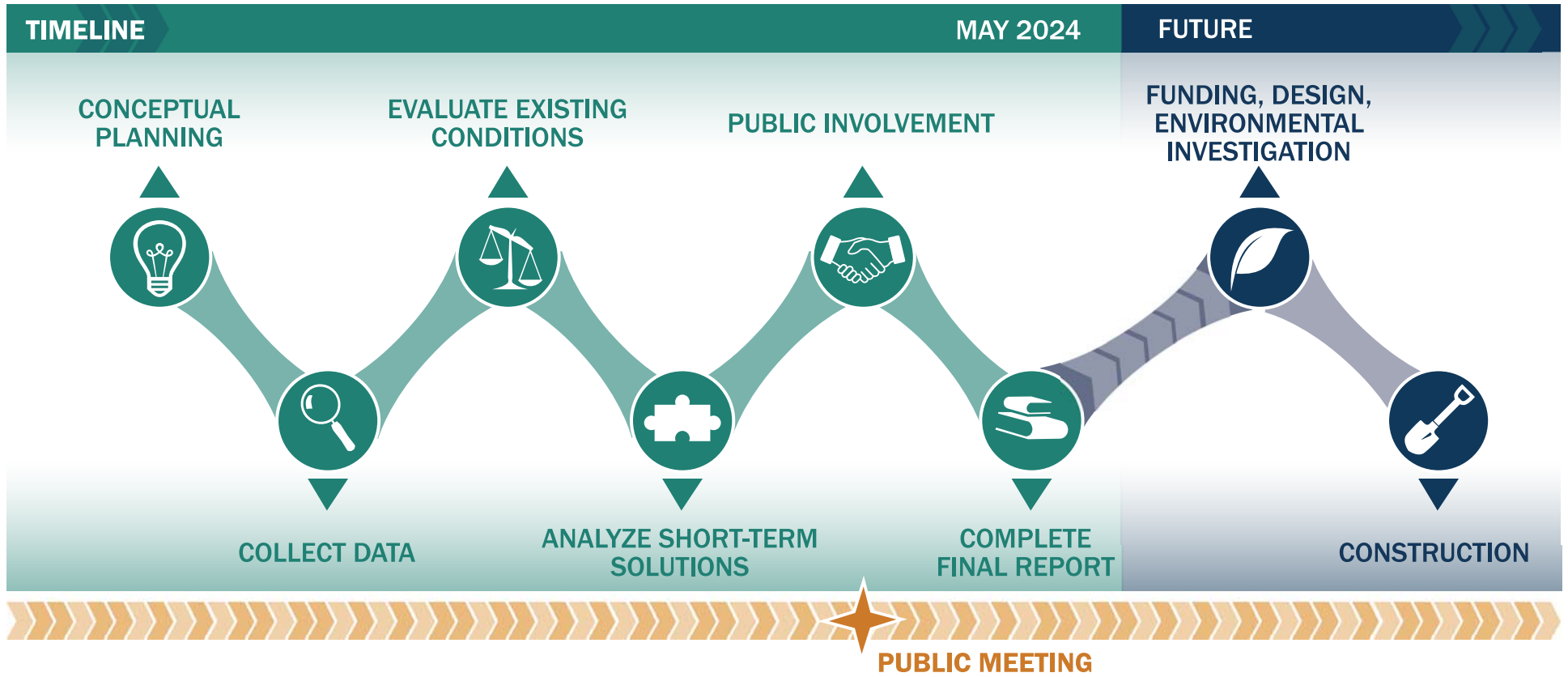


Improve Collaboration

through community engagement and feedback to develop practical solutions

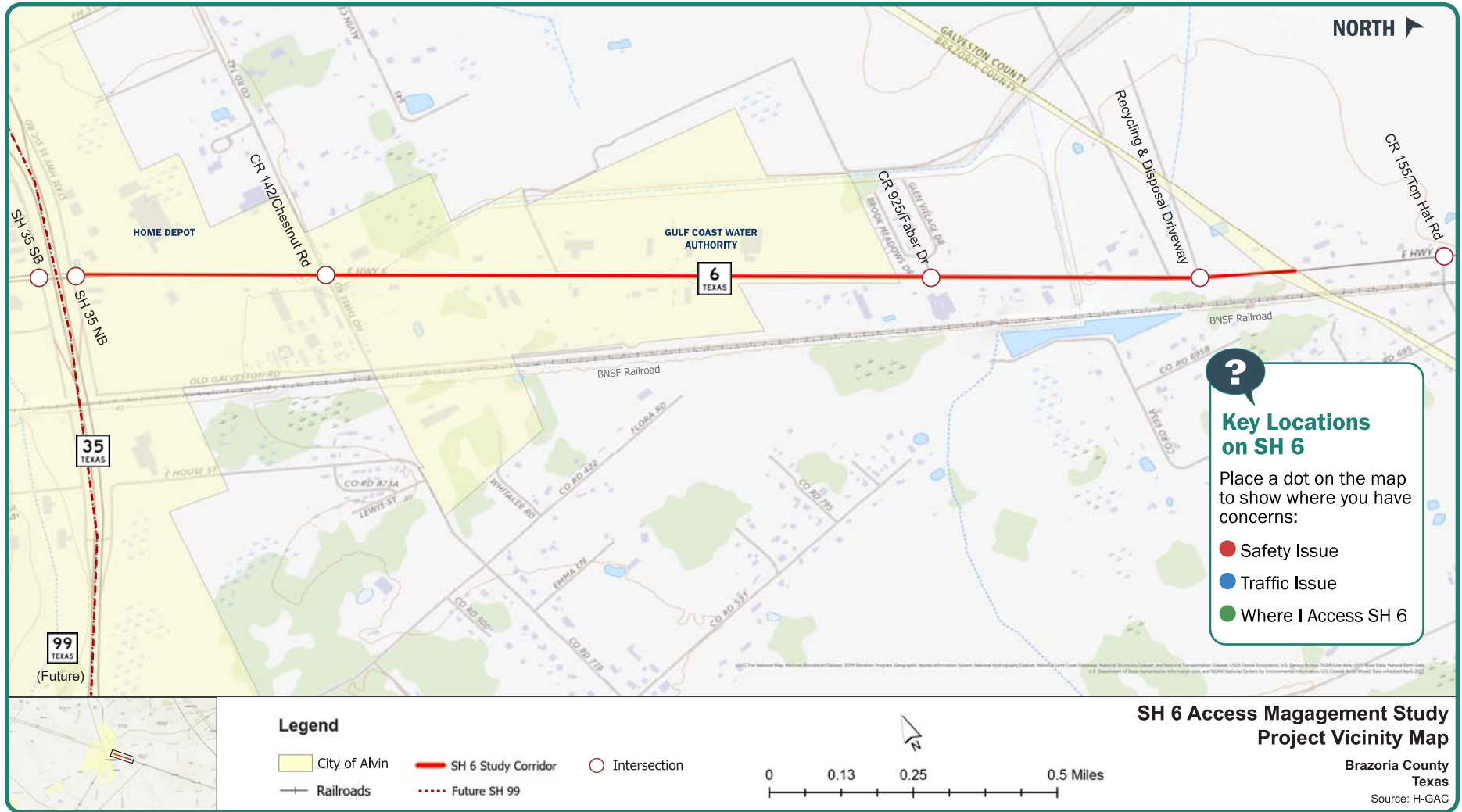


Study Timeline





Interactive Vicinity Map





Existing Conditions: Corridor Facts



Hurricane
evacuation
route



Approx. 2
miles corridor
length



Medians
installed near
SH 35 in 2017



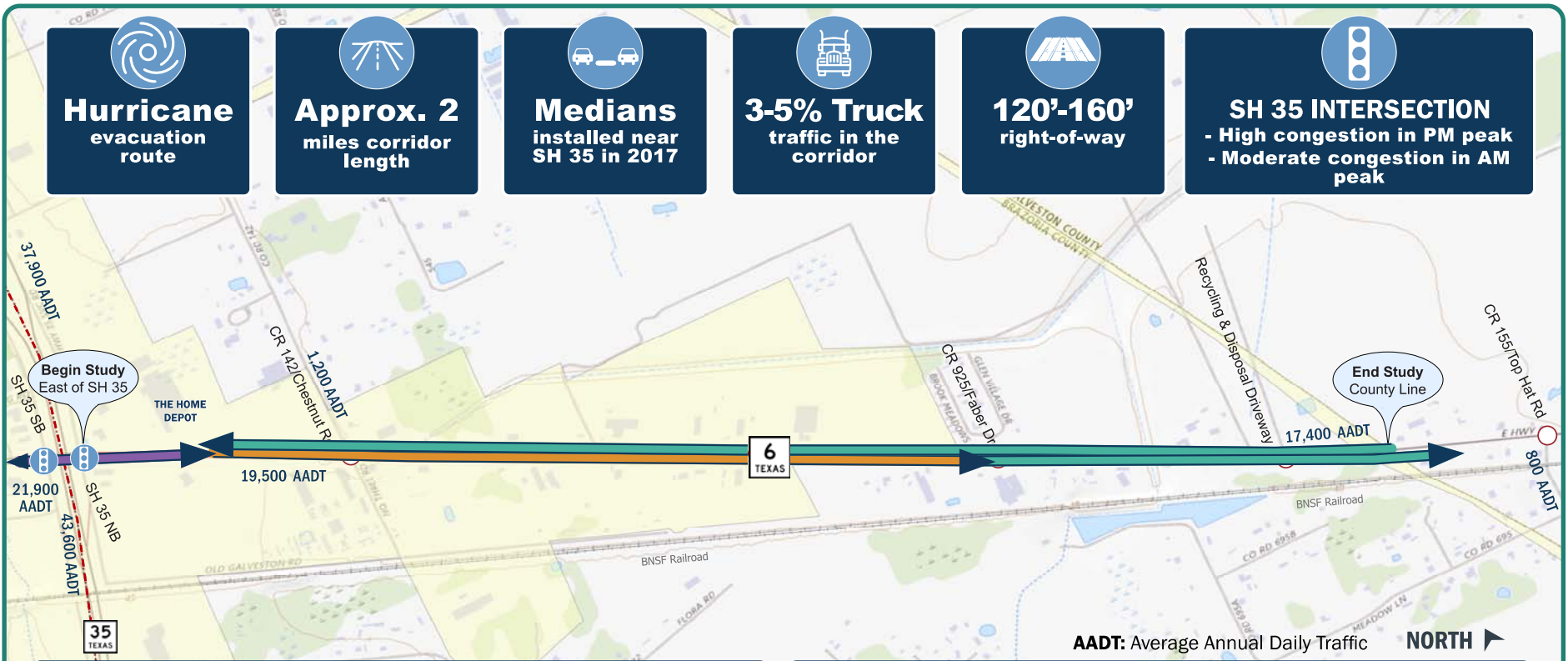
3-5% Truck
traffic in the
corridor



120'-160'
right-of-way

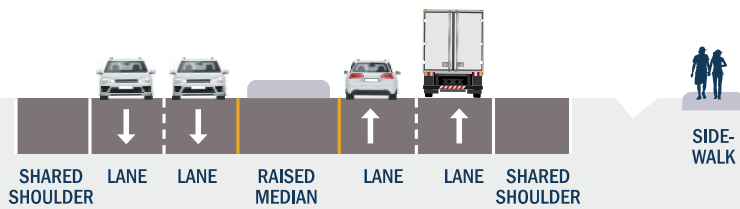


SH 35 INTERSECTION
- High congestion in PM peak
- Moderate congestion in AM peak



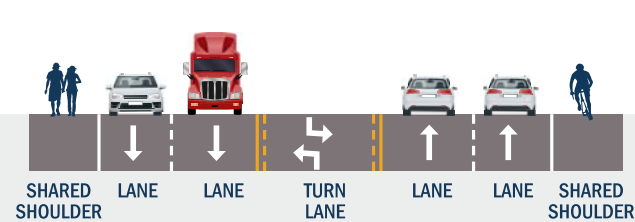
SH 35 to Home Depot

SPEED LIMIT
45



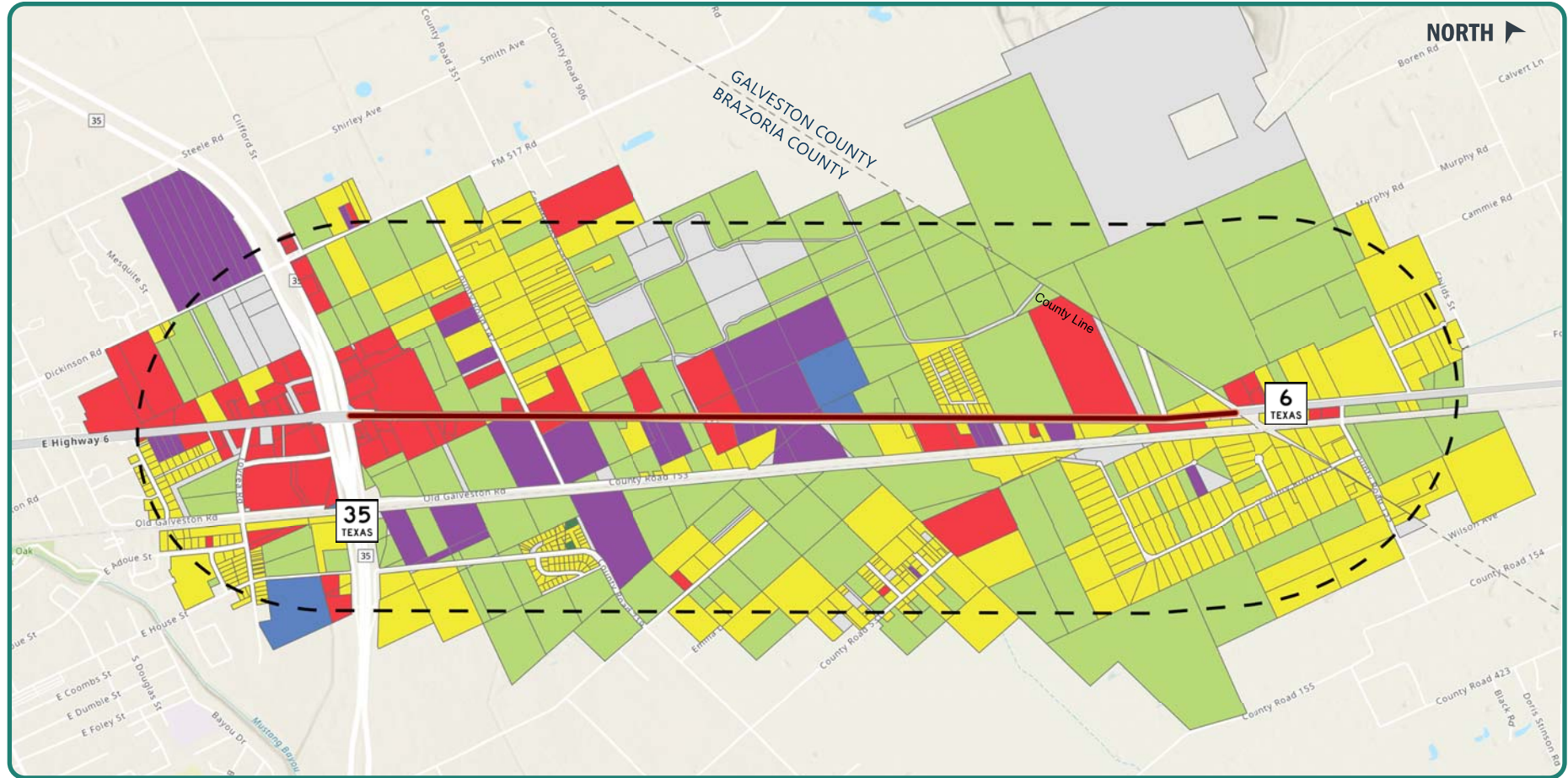
From Home Depot to County Line






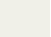

SPEED LIMIT
50





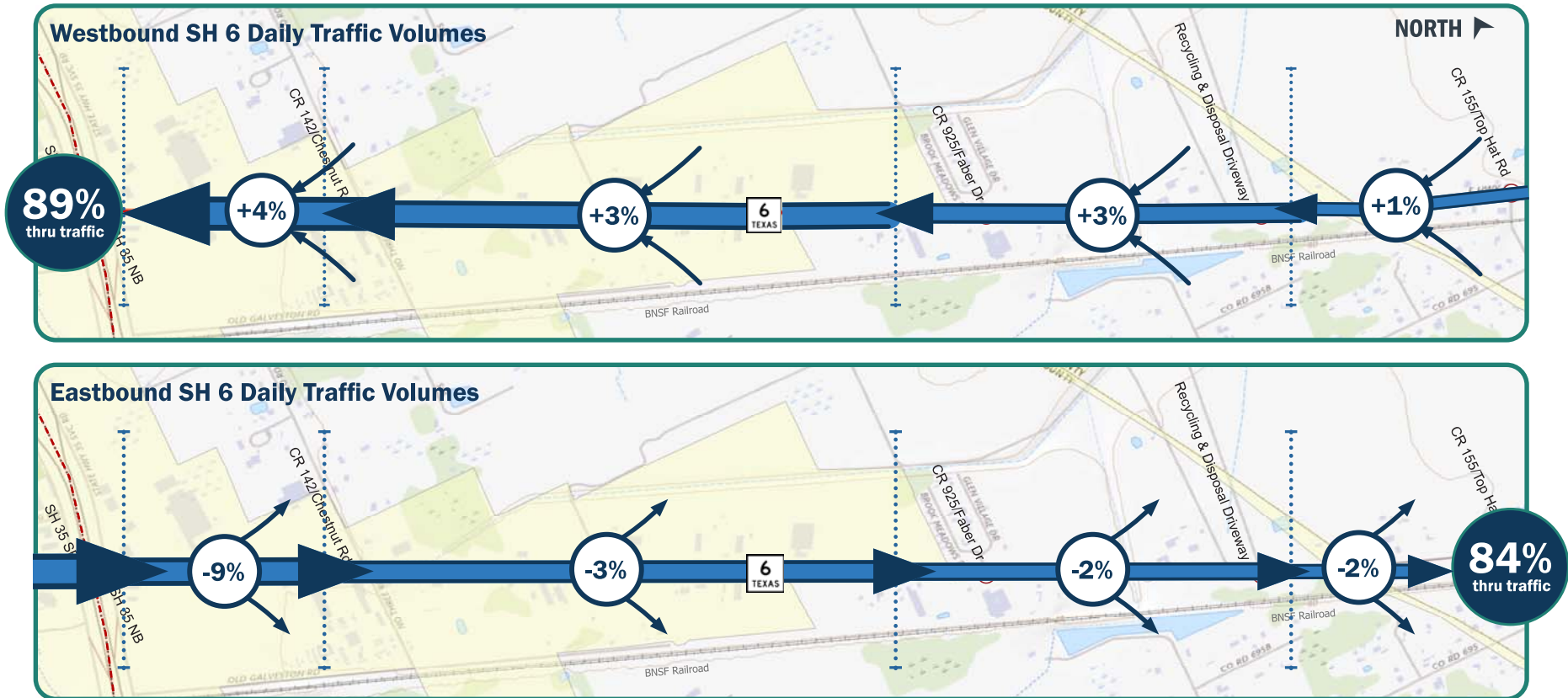
Existing Conditions: Land Use



	Vacant Developable	45%		Commercial	10%		1/2 Mile Buffer
	Residential	24%		Industrial	7%		
	Other	12%		Institutional	1%		



Existing Conditions: Travel Patterns



Existing Peak Hour Conditions



4 minutes
average travel time to get
through the two-mile corridor



40 mph
average travel speed



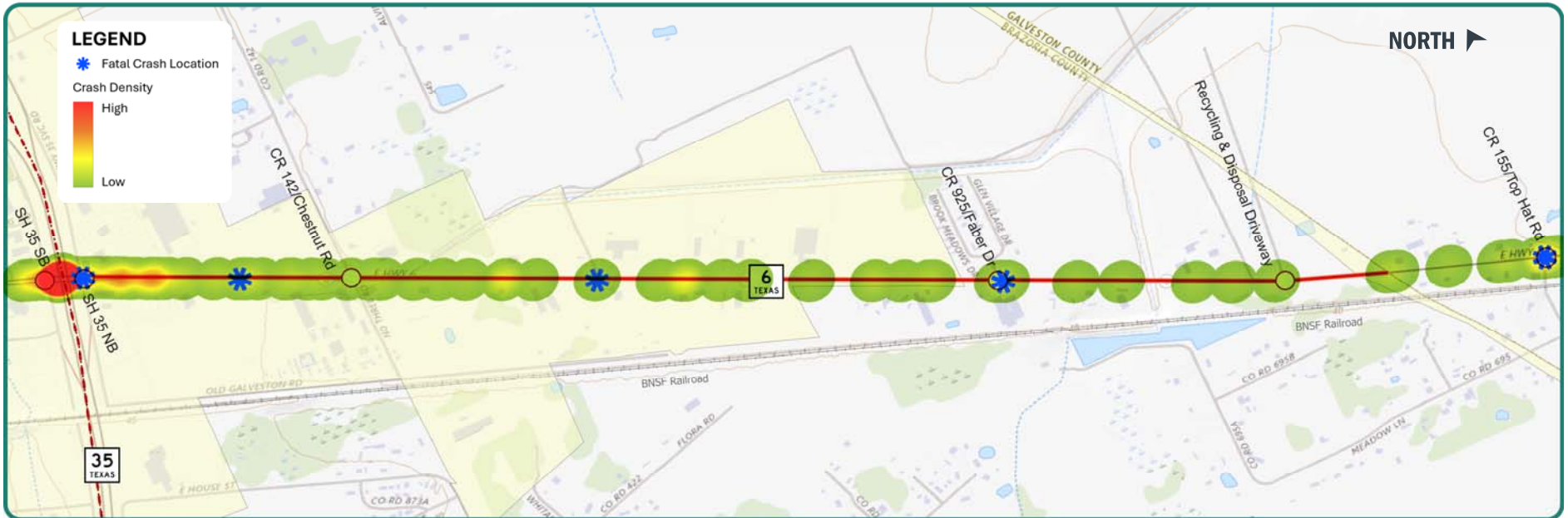
Existing Conditions: Safety (2018-2022)

1
pedestrian
crash

0
bike
crashes

5
fatal
crashes

7
serious injury
crashes

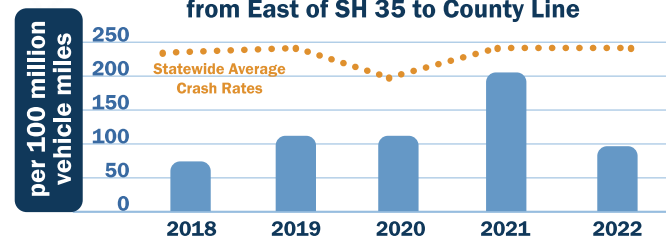


Contributing Factor Categories:

Non-Compliance*	28%
Speeding	22%
Vehicle Operations	21%
Inattention	19%
Other	10%

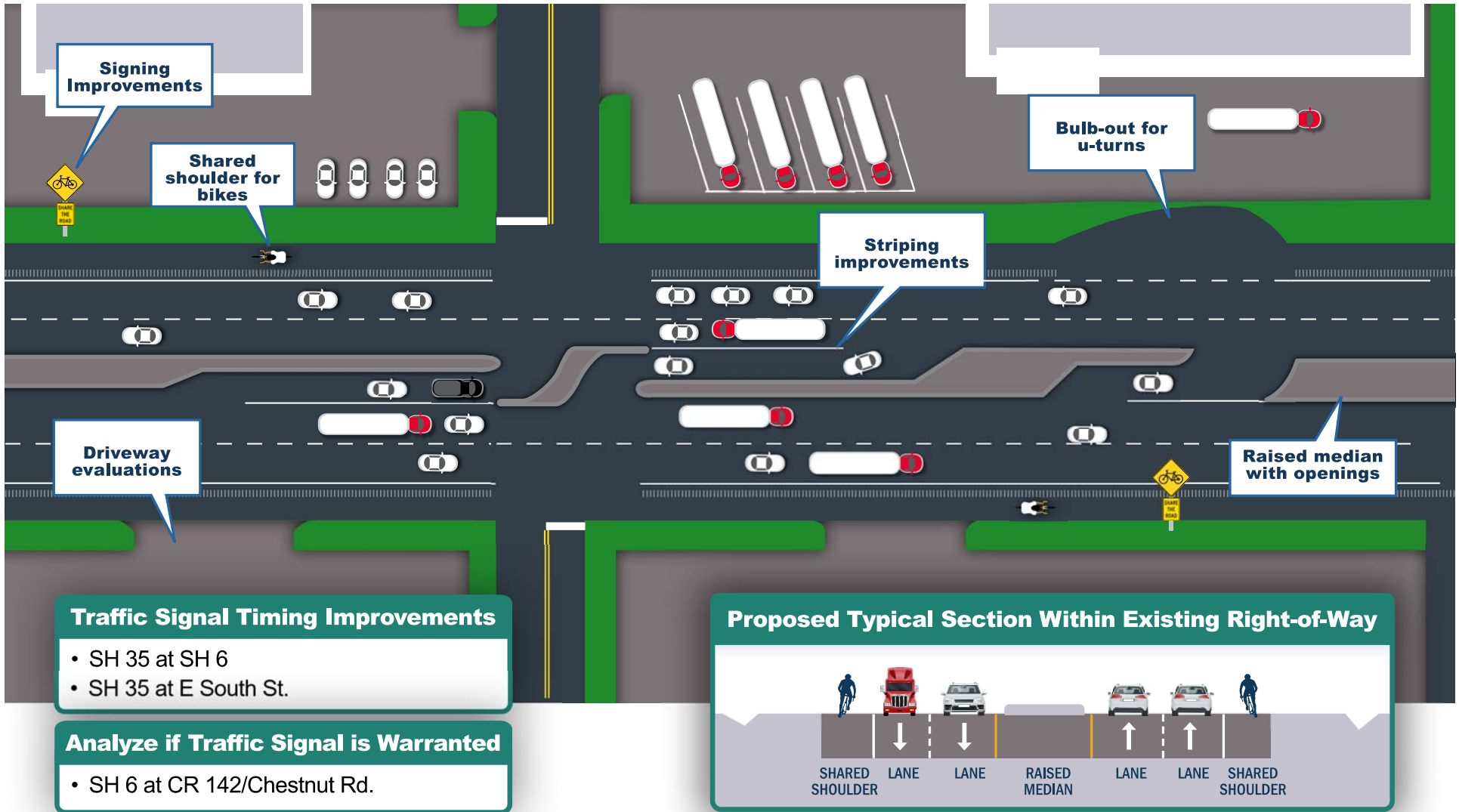
* Includes failed to yield ROW and disregard stop sign/signal, etc.

SH 6 Traffic Crash Rates from East of SH 35 to County Line





Proposed Improvement Concepts





Safety Benefits

Due to adding a raised median

Sources:

1. The Crash Modification Factors Clearinghouse
2. Costs based on 2021 Nation Safety Council cost by injury severity or crash

Performance Improvement



27%
reduction in
total crashes¹

Economic Benefits



\$2.1
million per year²



Next Steps



Your input will help us develop solutions

- The study design team will review public and stakeholder feedback
- Proposed improvements will be refined, as applicable, based on feedback
- The study will be completed in May 2024



Please send any questions or comments to:

Address:

Public Information Office
P.O. Box 1386
Houston, TX 77251-1386

Phone:

(713) 802-5022

Email:

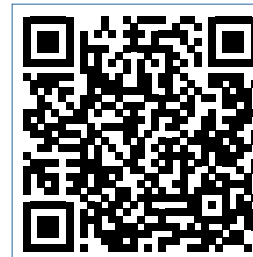
HOU-PIOwebmail@txdot.gov

Website:

Go to: www.txdot.gov/projects/hearings-meetings.html

Search: SH 6 Access Management

Thank you!



Scan code with your phone for the meetings and hearings page!