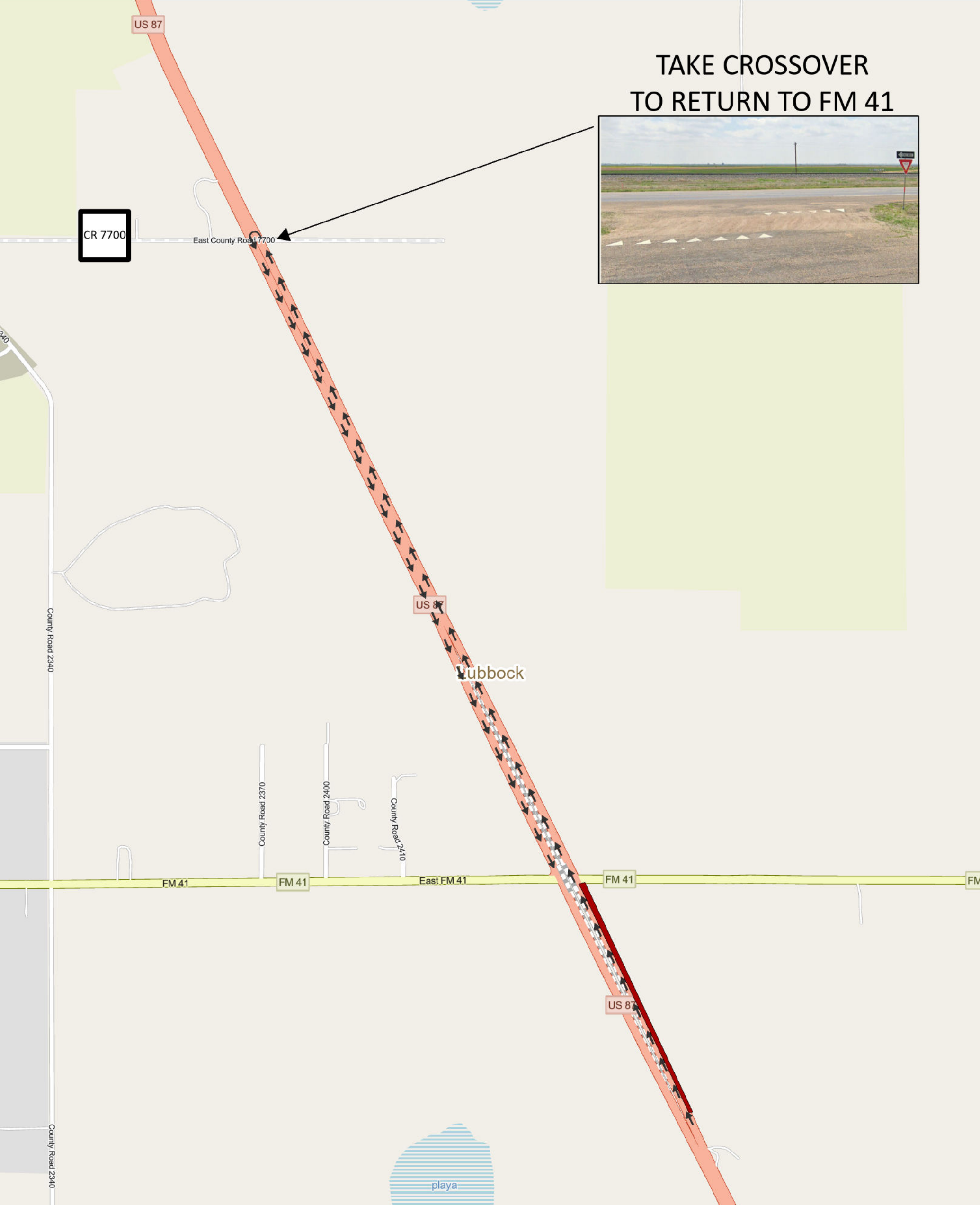


PHASE 4: US 87 NB DETOUR TO FM 41

CSJ 0068-01-086

SUBJECT TO CHANGE



TAKE CROSSOVER
TO RETURN TO FM 41



During Phase 4 the FM 41 NB exit ramp will be closed.
If you are traveling on US 87 NB continue over the bridge and go approximately 1.4 miles to the crossover at County Road 7700.
Safely traverse onto US 87 SB and take the FM 41 exit ramp.
Travelers may turn either East or West at the intersection.

