

Slide 1

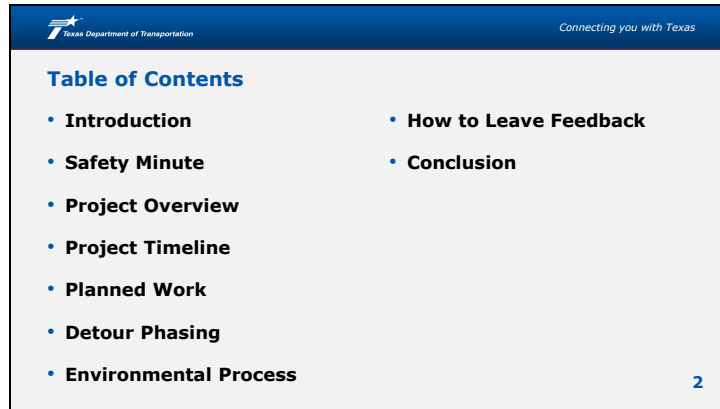


The Texas Department of Transportation Lubbock District would like to welcome you to the virtual public meeting for the FM 41 at US 87 Bridge Project in Lubbock County, Texas.

This is a pre-recorded presentation made available on Monday, August 25, 2025, beginning at 10 a.m. The Lubbock District appreciates your interest and involvement in this project and thanks you for your participation.

If you have any technical difficulties accessing the public meeting information, need special accommodations, or speak a language other than English or Spanish and have interpretation needs please leave a message at LBB_projects@txdot.gov or 806-748-4450. Details on how to submit comments will be provided further in the presentation.

Slide 2



The slide features a blue header with the Texas Department of Transportation logo on the left and the slogan "Connecting you with Texas" on the right. The main content area is white with a black border. The title "Table of Contents" is in blue. The list of items is in black, with "How to Leave Feedback" and "Conclusion" positioned to the right of the other items. A small blue number "2" is in the bottom right corner.

| Table of Contents | |
|--------------------------------|--------------------------------|
| • Introduction | • How to Leave Feedback |
| • Safety Minute | • Conclusion |
| • Project Overview | |
| • Project Timeline | |
| • Planned Work | |
| • Detour Phasing | |
| • Environmental Process | |

2

To begin we would like to cover the items available in this presentation.

We have the following:

- Introduction
- Safety Minute
- Project Overview
- Planned Work
- Detour Phasing
- Project Timeline
- Environmental Process
- How to Leave Feedback
- Meeting Conclusion

Slide 3



The Lubbock District wants to start this presentation with a safety minute.


How to Drive like a Texan

- Remember that everyone else on the road has a family and loved ones.
- If you feel angry or anxious, take a couple of deep breaths, and keep your eyes on the road. Focus on where you're headed instead of what's happened to make you mad.
- Always know where you're going BEFORE you start driving. Do not navigate while you drive. It's dangerous and potentially deadly to you and every car around you.
- Phones are dangerous. Sometimes fatal. Never text while driving. Never watch a video.
- Speeding doesn't work. It seldom gets you where you're going much more quickly, and the potential for a bad outcome rises as you increase your speed.
- Courtesy and respect always beat impatience and anger, whether you're on an expressway or in a parking lot. Be the person who de-escalates a situation.
- Always wave, "Thanks," when someone lets you merge. People notice and appreciate it.

Slide 4

Texas Department of Transportation *Connecting you with Texas*

Project Overview



TxDOT is preparing final design and modifications for the construction and rehabilitation of the project limits at US 87 and FM 41. The purpose of this meeting is to display detour routes for the proposed project phasing.

Project Limits: From 0.75 miles north of FM 41 to 0.75 miles south of FM 41.

Project Length: 1.22 miles

Proposed Project: Bridge Construction

Location: Outside of the City of Lubbock and south of Woodrow Road

Estimated Completion Period: 18 months

4

TxDOT is preparing final design and modifications for the construction and rehabilitation of the project limits at US 87 and FM 41. The purpose of this public meeting is to engage the community and traveling public regarding the proposed project and for design staff to address questions and concerns regarding proposed detours and phasing of construction activities.

The FM 41 at US 87 Bridge Project will span 0.75 miles north of the intersection to 0.75 miles south of the intersection. The proposed bridge construction and drainage design enhancements will include updated roadway standards and adjustments to the pavement surface.

The location of the project will also require a permanent closure of a crossover just south of the existing intersection. Closure of this crossover is being performed due to the proximity of the bridge and entrance and exit ramps off US 87. While this crossover will be permanently closed, TxDOT did consider access management and will leave in place the crossover, located approximately half a mile south, at County Road 7900.

Slide 5



We want to highlight the estimated project timeline.

The two milestones already completed are that of allocating design funds and securing environmental clearance for the project being presented today.

After the comment period closes, the project team will review the comments received, make appropriate design changes and prepare official public meeting documentation. Public meeting documentation, which includes responses to all comments received, will be posted to the project meeting page when completed.

The milestone we are currently working towards is the finalization of design revisions for the structure, roadway surface, and adjustments to meet new roadway standards.

To move forward, TxDOT has an expected letting of December 2025. Letting of a project is when contractors can submit bid packages to compete for the award of the project construction. This milestone is dependent on construction funding availability and completion of the previous milestones.

Once letting and award of a contract has been issued by TxDOT, the contractor and Area Office may begin coordinating the initiation of construction activities. The construction of the project is anticipated to begin in the Spring of 2026.

Various construction phases will occur to reduce impacts to the traveling public on US 87 and FM 41. As phases pass and we near Winter of 2027, we anticipate the contractor to complete the project. The establishment of construction milestones with the contractor are being evaluated for implementation in this project.


To remind you, we are still in the milestone of finalizing design; we appreciate comments and feedback from the public.

All dates mentioned are subject to change and are dependent on funding availability and environmental constraints during construction such as weather delays.

TxDOT has set up a project page that will allow you to subscribe to updates from project staff such as detour phasing changes, access changes, projected delays, and project milestone statuses.


You may subscribe and unsubscribe at any point to project status updates at www.txdot.gov and using keyword search "FM 41 at US 87 Bridge Project".

Slide 6

 Connecting you with Texas

Planned Work

- Construction of the overpass at FM 41 and US 87
- Rehabilitating pavement surfaces
- Replacing drainage structures
- Replacing driveways
- Constructing entrance and exit ramps on US 87



6

Construction activities in this project include the completion of the overpass at the FM 41 and US 87 intersection.

Rehabilitation of the pavement surface of US 87 mainlanes, construction of entrance and exit ramps for US 87, and rehabilitating the FM 41 roadway surface under the bridge.

During review of the design and modifications to meet new standards, drainage is being evaluated to address concerns of retention of water on the roadway.

Construction will also consist of replacing driveways in the project limits, restriping for the entrance and exit ramps, and installing safety illumination and signage.

Slide 7

| Texas Department of Transportation | | Connecting you with Texas |
|---------------------------------------|---|---------------------------|
| Construction and Detour Phases | | |
| Phase 1 | <ul style="list-style-type: none">• Completion of the north side bridge structure• No detours planned | |
| Phase 2 | <ul style="list-style-type: none">• Completion of the south side bridge structure• No detours planned | |
| Phase 3 | <ul style="list-style-type: none">• FM 41 roadway under the bridge is closed• Detours anticipated | |
| Phase 4 | <ul style="list-style-type: none">• US 87 NB exit ramp for FM 41 is closed• Detours anticipated | |
| Phase 5 | <ul style="list-style-type: none">• US 87 SB entrance ramp is closed• Detours anticipated | |
| Phase 6 | <ul style="list-style-type: none">• Daily lane closures anticipated when working on final pavement surfaces to complete project | 7 |

Detours are anticipated for various segments and phasing of the project.

Phase 1 of construction includes the completion of the north side of the bridge structure. No detours for this phase are anticipated.

Phase 2 of construction includes the completion of the south side of the bridge structure. No detours for this phase are anticipated.

Phase 3 of construction includes the temporary closure of FM 41, under the bridge, to allow the hanging of bridge beams in a safe manner. The US 87 mainlanes and turnarounds under the bridge structure will also be completed in this phase.

Phase 4 of construction includes the rehabilitation of the northbound service road associated with the FM 41 exit ramp.

- There are planned detours for FM 41 in this construction phase.
- The US 87 mainlanes are open over the bridge for the traveling public.

Phase 5 of the construction includes the rehabilitation of the southbound service road and repair and replacement of drainage structures to resolve identified drainage problems.

- Detours will be a part of this construction phase to allow work to repair and complete the south service road and associated US 87 entrance ramp.
- This will require detours for those traveling to southbound US 87 from FM 41.

Phase 6 of the construction includes the final pavement surface installation for the entire project area.

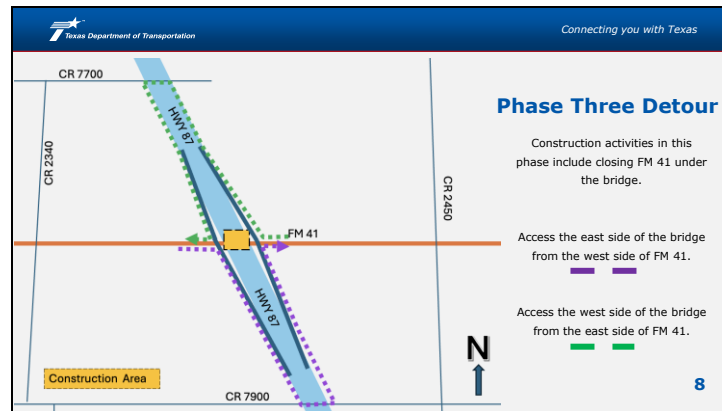
- Daily lane closures will be anticipated.

Driveways, drainage, illumination, and signs will be addressed throughout each phase as construction progresses.

The public is to be aware that changes to traffic control may occur sporadically in the event of weather.

You may download the phasing sheets online at the project page.

Slide 8

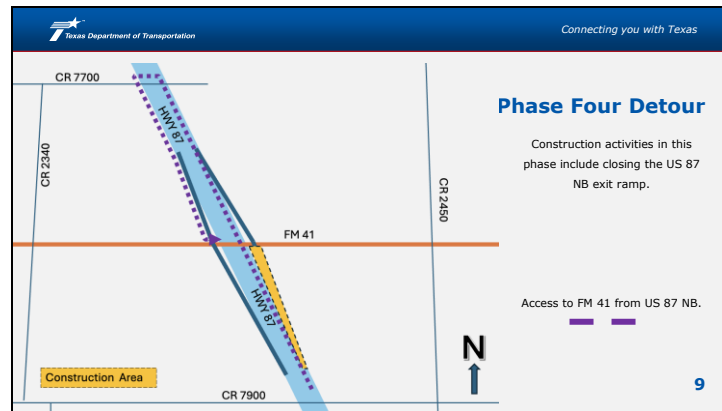


During Phase 3, FM 41 under the bridge will be closed.

Travelers on the east side of the bridge trying to access the west side of the bridge will need to travel onto US 87 northbound mainlanes. Once on the mainlanes travelers will go approximately 1.4 miles to the crossover at County Road 7700. At this crossover, safely traverse onto US 87 southbound and take the exit ramp to reach FM 41.

Travelers on the west side of the bridge trying to access the east side of the bridge will need to travel onto US 87 southbound mainlanes. Once on the mainlanes travelers will go approximately 1.1 miles south to the crossover at County Road 7900. At this crossover, safely traverse onto US 87 northbound and take the exit ramp to reach FM 41.

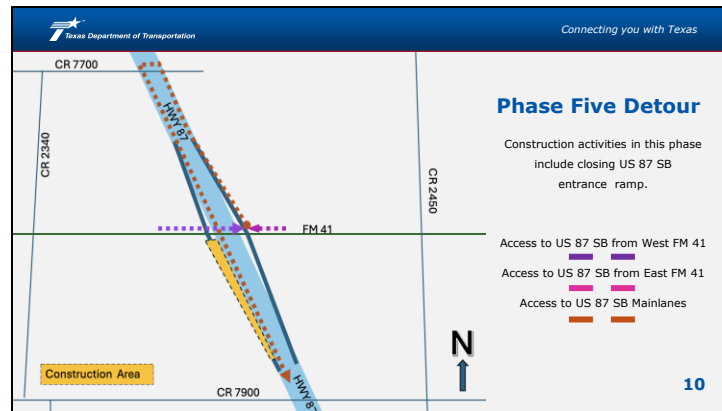
Slide 9



In Phase 4 of construction, work activities include work on the US 87 northbound exit ramp.

Travelers on US 87 northbound will continue over the bridge and go approximately 1.4 miles to the crossover at County Road 7700. Safely traverse this crossing to get onto US 87 southbound mainlanes and take the FM 41 exit ramp. Travelers will then be able to turn either east or west at the intersection.


Slide 10



In Phase 5 of construction work activities include work on the US 87 southbound entrance ramp.

The Phase 5 detour will be in place when the US 87 southbound entrance ramp is closed. To access US 87 southbound from FM 41, drivers will need to travel to the entrance ramp for US 87 northbound. Go approximately 1.4 miles north on US 87 northbound to reach the crossover at County Road 7700. Safely traverse this crossing to get onto US 87 southbound mainlanes.

Slide 11


 Connecting you with Texas

Environmental Process

There are no right-of-way acquisition or displacements planned with this project.

Environmental Documentation has been prepared in accordance with the National Environmental Policy Act (NEPA).

The environmental documentation identifies social, economic and environmental effects of the proposed project.



*The environmental review, consultation, and other actions required by applicable Federal environmental laws for this project are being, or have been, carried-out by TxDOT pursuant to 23 U.S.C. 327 and a Memorandum of Understanding dated **July 17, 2025**, and executed by FHWA and TxDOT.*

11

There is no new right-of-way, displacements or relocations planned with this project.


The National Environmental Policy Act review and approval process applies to this project. The environmental studies being conducted for this project comply with the National Environmental Policy Act.

The environmental evaluation of potential impacts by the proposed project to the natural and human environment include:

- Biological Resources
- Cultural Resources
- Hazardous Materials
- Historical Resources
- Traffic Noise
- Community Impacts

The environmental review, consultation, and other actions required by applicable Federal environmental laws for this project are being, or have been, carried-out by TxDOT pursuant to 23 U.S.C. 327 and a Memorandum of Understanding dated July 17, 2025, and executed by FHWA and TxDOT.

Slide 12



How to Submit Your Comment

Voicemail: Call 806-748-4450 and leave a voicemail with your comments.

Email: LBB_PROJECTS@txdot.gov

Mail:
TxDOT Lubbock District Office
Attn: Environmental
135 Slaton Rd.
Lubbock, TX 79404

Comments must be received or postmarked on or before **Friday, Sept. 12, 2025** to be included in the public meeting summary report.

Thank you for your interest and participation in this virtual public meeting.

Your input is a critical part of the project process.

Comments can be submitted in one of the following ways:

- You may leave up to a 3-minute voicemail at 806-748-4450.
- You can email your comments to LBB_Projects@txdot.gov.
- You can also visit txdot.gov, keyword search “FM 41 at US 87 Bridge Project” to submit your comments by downloading and mailing the comment form.
- In addition, you can mail your comments to the address noted on the screen, TxDOT Lubbock District Office, ATTN: Environmental, 135 Slaton Road, Lubbock, Texas, 79404.

Questions or comments may be submitted to TxDOT and the project team at any time during the project development and construction.

However, to be included in the official public meeting record, all comments must be received or postmarked by Friday, September 12, 2025.

Documentation of the virtual public meeting will be included in the project record and will be posted on the project’s webpage on txdot.gov, keyword search “FM 41 at US 87 Bridge Project.”

Slide 13



Thank you for watching this virtual public meeting on TxDOT's FM 41 at US 87 Bridge Project.

This concludes our presentation.