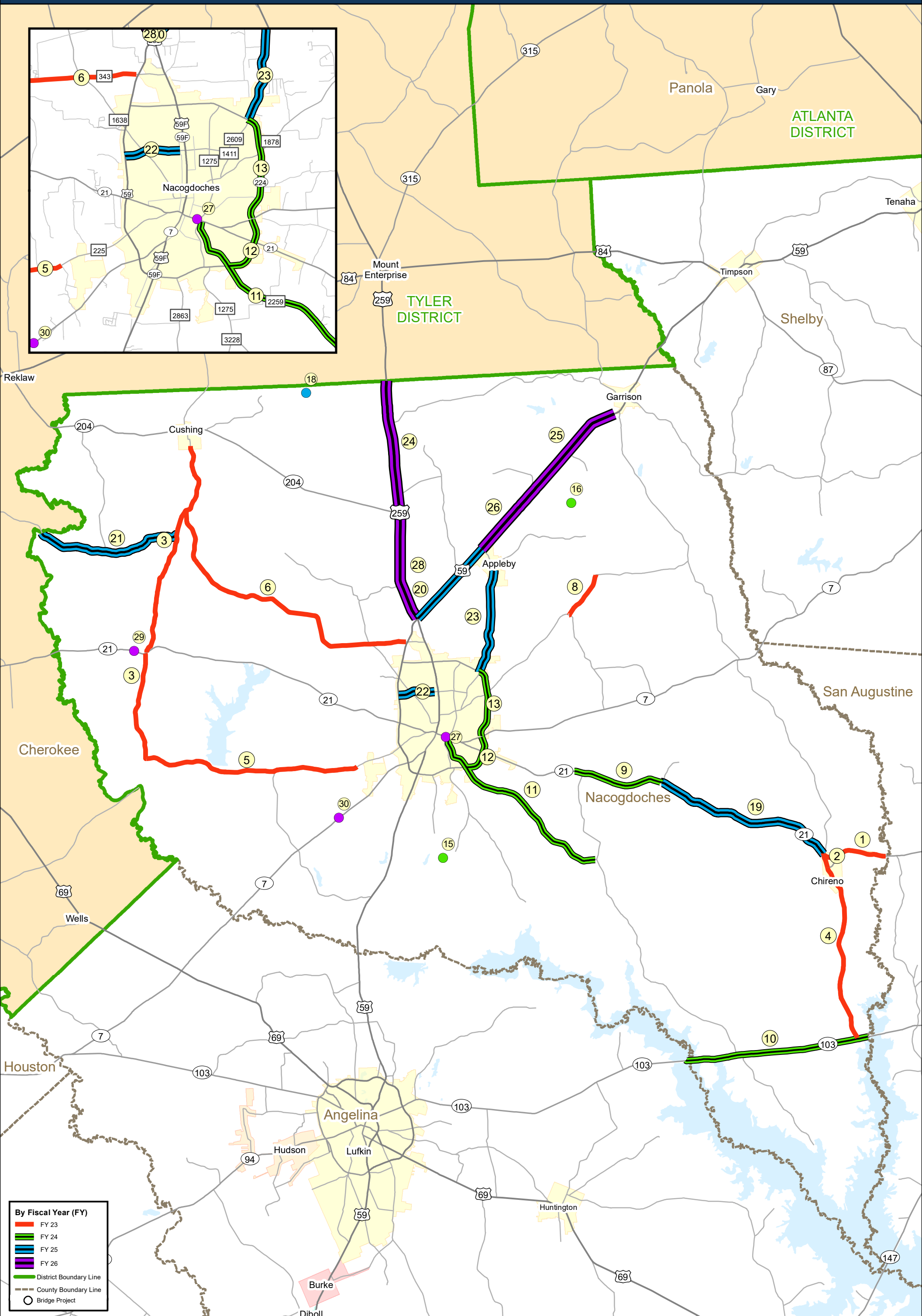


Texas Department of Transportation
Lufkin District
2023-2026 Rural Transportation Improvement Plan (RTIP)

ID	ESTIMATED LET DATE (YY-MM)	PROJECT NUMBER	HIGHWAY NUMBER	PROJECT CLASS	DESCRIPTION OF WORK	LIMITS FROM	LIMITS TO	ESTIMATED COST
NACOGDOCHES COUNTY								
1	22-11	0118-08-086	SH 21	SC	RESURFACE WITH SEAL COAT	FM 95	SAN AUGUSTINE COUNTY LINE	\$ 117,069.33
2	22-11	0118-11-009	SL 34	SC	RESURFACE WITH SEAL COAT	FM 95	SH 21	\$ 22,105.60
3	22-11	0594-04-029	FM 225	SC	RESURFACE WITH SEAL COAT	0.84 MI S OF SH 204 (S OF CEDAR AVE)	5.1 MI S OF SH 21	\$ 689,683.28
4	22-11	0706-05-013	FM 95	SC	RESURFACE WITH SEAL COAT	SH 103	SL 34	\$ 303,529.60
5	22-11	1810-02-026	FM 225	SC	RESURFACE WITH SEAL COAT	5.1 MI S OF SH 21	CR 715	\$ 457,449.17
6	22-11	2300-01-022	FM 343	SC	RESURFACE WITH SEAL COAT	FM 225	US 59	\$ 536,624.00
* 7	23-05	0911-08-058	VA	OV	STATE PARK IMPROVEMENTS	WITHIN ALAZAN BAYOU WMA	.	\$ 80,000.00
8	23-05	1810-01-036	FM 1878	SFT	PROVIDE ADDITIONAL PAVED SURFACE WIDTH TO 28', PROFILE EDGELINE MARKINGS, PROFILE CENTERLINE MARKINGS	FM 2112	CR 280	\$ 3,204,353.10
9	23-11	0118-08-087	SH 21	SC	RESURFACE WITH SEAL COAT	0.4 MI W OF FM 226	FM 3276	\$ 250,154.67
10	23-11	0336-06-032	SH 103	SC	RESURFACE WITH SEAL COAT	SAN AUGUSTINE COUNTY LINE	ANGELINA COUNTY LINE	\$ 567,699.73
11	23-11	2116-01-023	FM 2259	SC	RESURFACE WITH SEAL COAT	BU 7	FM 226	\$ 322,009.60
12	23-11	2560-01-088	SH 7	SC	RESURFACE WITH SEAL COAT	SH 7	FM 2259	\$ 178,816.00
13	23-11	2560-02-031	SL 224	SC	RESURFACE WITH SEAL COAT	FM 2609	SH 7 EAST	\$ 214,206.67
* 14	24-03	0911-08-056	VA	BIK	BICYCLE INFRASTRUCTURE IMPROVEMENTS	ALONG LANANA CREEK FROM FM 2609 (E. AUSTIN STREET)	FM 1878 (E. STARR AVE.)	\$ 1,386,325.00
15	24-05	0911-08-049	CR	BR	REPLACE BRIDGE AND APPROACHES	CR 526 AT LA NANA BAYOU	.	\$ 800,000.00
16	24-05	0911-08-050	CR	BR	REPLACE BRIDGE AND APPROACHES	CR 271 AT NACONICHE CREEK	.	\$ 675,000.00
* 17	24-05	0911-08-059	VA	OV	STATE PARK IMPROVEMENTS	WITHIN ALAZAN BAYOU WMA	.	\$ 30,000.00
18	24-10	0911-08-052	CR	BR	REPLACE BRIDGE AND APPROACHES	CR 950 AT BEECH CREEK	.	\$ 597,857.14
19	24-11	0118-08-089	SH 21	SC	RESURFACE WITH SEAL COAT	FM 3276	FM 95	\$ 501,553.07
20	24-11	0175-07-064	US 59	SC	RESURFACE WITH SEAL COAT	FM 941	US 259	\$ 555,112.80
21	24-11	0926-02-014	FM 343	SC	RESURFACE WITH SEAL COAT	RUSK COUNTY LINE	FM 225	\$ 275,410.67
22	24-11	2590-01-032	FM 2609	SC	RESURFACE WITH SEAL COAT	PEARL ST	US 59/SL 224	\$ 84,022.40
23	24-11	2590-01-033	FM 2609	SC	RESURFACE WITH SEAL COAT	FM 941	SL 224	\$ 203,344.53
24	25-11	0138-06-047	US 259	IOI	WIDEN PAVEMENT FOR CONTINUOUS LEFT TURN LANE	RUSK COUNTY LINE	SH 204	\$ 27,900,000.00
25	25-11	0175-07-062	US 59	SC	RESURFACE WITH SEAL COAT	JUST SOUTH OF FM 95	FM 2435	\$ 668,506.67
26	25-11	0175-07-063	US 59	SC	RESURFACE WITH SEAL COAT	FM 2435	FM 941	\$ 471,864.80
27	26-01	0118-08-085	BS 7-N	BR	REPLACE BRIDGE AND APPROACHES	AT LA NANA CREEK	.	\$ 3,200,000.00
28	26-01	0138-06-049	US 259	OV	RESURFACE ROADWAY - OCST AND PFC OVERLAY	SH 204	US 59	\$ 3,100,000.00
29	26-02	0118-06-071	SH 21	BR	REPLACE BRIDGE AND APPROACHES	AT KING CREEK	.	\$ 1,400,000.00
30	26-03	0553-03-034	SH 7	BR	REPLACE BRIDGE AND APPROACHES	AT MORRAL CREEK	.	\$ 1,610,000.00

* Project not mapped



By Fiscal Year (FY)

- FY 23
- FY 24
- FY 25
- FY 26
- District Boundary Line
- County Boundary Line
- Bridge Project

