



# WELCOME

## April 6, 2021

### Pre-Recorded Virtual Public Meeting

#### Farm-to-Market (FM) 1472

Operation Improvements Project

From I-69W Interchange to Pan American Boulevard

Webb County, Texas

Laredo District

CSJ: 2150-04-080





- Provide public involvement opportunities for stakeholders, roadway users and the general community to engage with the project team and share feedback
- Update those interested on the project process and timeline

# Virtual Public Meeting in Response to Public Health



## TxDOT changed the in-person public meeting to a virtual format in response to the COVID-19 outbreak:

The virtual public meeting and TxDOT website provides the same information as an in-person meeting:

- Project information
- Estimated timeline
- Process for submitting comments
- Key contacts

All project information can be found on the TxDOT webpage.

[www.txdot.gov](http://www.txdot.gov)

Search: FM 1472 Webb County

### What you should know about COVID-19 to protect yourself and others



#### Know about COVID-19

- Coronavirus (COVID-19) is an illness caused by a virus that can spread from person to person.
- The virus that causes COVID-19 is a new coronavirus that has spread throughout the world.
- COVID-19 symptoms can range from mild (or no symptoms) to severe illness.



#### Practice social distancing

- Buy groceries and medicine, go to the doctor, and complete banking activities online when possible.
- If you must go in person, stay at least 6 feet away from others and disinfect items you must touch.
- Get deliveries and takeout, and limit in-person contact as much as possible.



#### Know how COVID-19 is spread

- You can become infected by coming into close contact (about 6 feet or two arm lengths) with a person who has COVID-19. COVID-19 is primarily spread from person to person.
- You can become infected from respiratory droplets when an infected person coughs, sneezes, or talks.
- You may also be able to get it by touching a surface or object that has the virus on it, and then by touching your mouth, nose, or eyes.



#### Prevent the spread of COVID-19 if you are sick

- Stay home if you are sick, except to get medical care.
- Avoid public transportation, ride-sharing, or taxis.
- Separate yourself from other people and pets in your home.
- There is no specific treatment for COVID-19, but you can seek medical care to help relieve your symptoms.
- If you need medical attention, call ahead.



#### Protect yourself and others from COVID-19

- There is currently no vaccine to protect against COVID-19. The best way to protect yourself is to avoid being exposed to the virus that causes COVID-19.
- Stay home as much as possible and avoid close contact with others.
- Wear a mask that covers your nose and mouth in public settings.
- Clean and disinfect frequently touched surfaces.
- Wash your hands often with soap and water for at least 20 seconds, or use an alcohol-based hand sanitizer that contains at least 60% alcohol.



#### Know your risk for severe illness

- Everyone is at risk of getting COVID-19.
- Older adults and people of any age who have serious underlying medical conditions may be at higher risk for more severe illness.



© 2020 TxDOT

[cdc.gov/coronavirus](https://cdc.gov/coronavirus)

# FM 1472 Virtual Public Meeting Webpage and Downloads



## AVAILABLE FOR DOWNLOAD:

- All Public Meeting Displays
- Traffic Simulation Videos

[www.txdot.gov](http://www.txdot.gov)

Search:  
FM 1472 Webb County

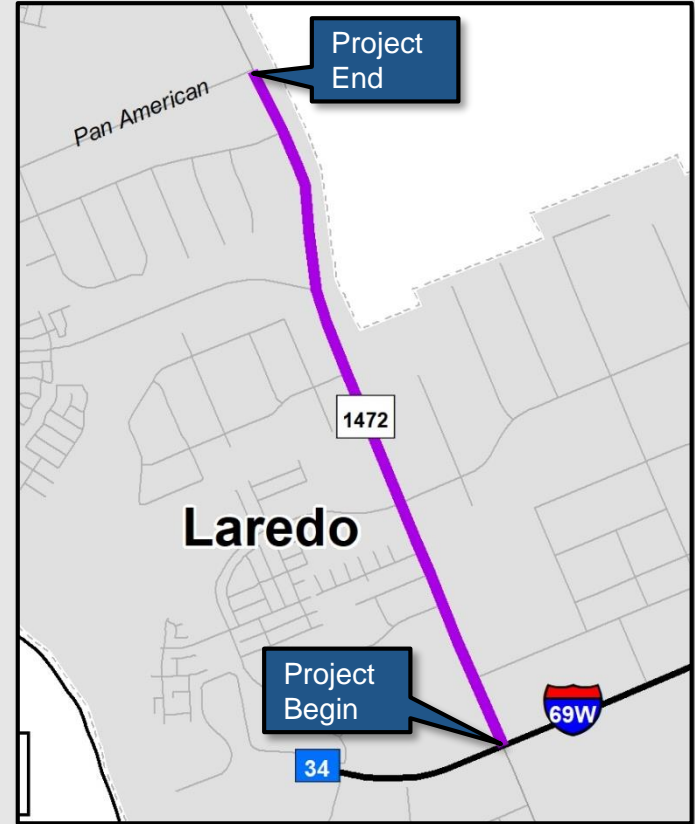
The screenshot shows the Texas Department of Transportation website. At the top left is the logo and the text "TEXAS DEPARTMENT OF TRANSPORTATION Connecting You With Texas Adventure". At the top right are links for "A - Z Site Index", "Contact Us", and "Español". A search bar in the top right contains the text "FM 1472 Webb County" with a magnifying glass icon. Below the search bar is a large banner for "#EndTheStreakTX" with a countdown timer showing 22 days, 04 hours, 13 minutes, and 03 seconds. Below the banner are four categories: "Driver", "Government", "Business", and "Careers", each with a representative image.



## FM 1472 From I-69W Interchange To Pan American Boulevard

2.3 miles in length  
City of Laredo  
Webb County, TX

The purpose of this project is to enhance safety, mobility and relieve congestion in the project area.





- Considerations

- Enhancing safety and mobility
- Minimizing right-of-way impacts
- Reducing delays
- Relieving congestion
- Improving traffic flow
- Providing alternative local access

- Proposed Operational Improvements

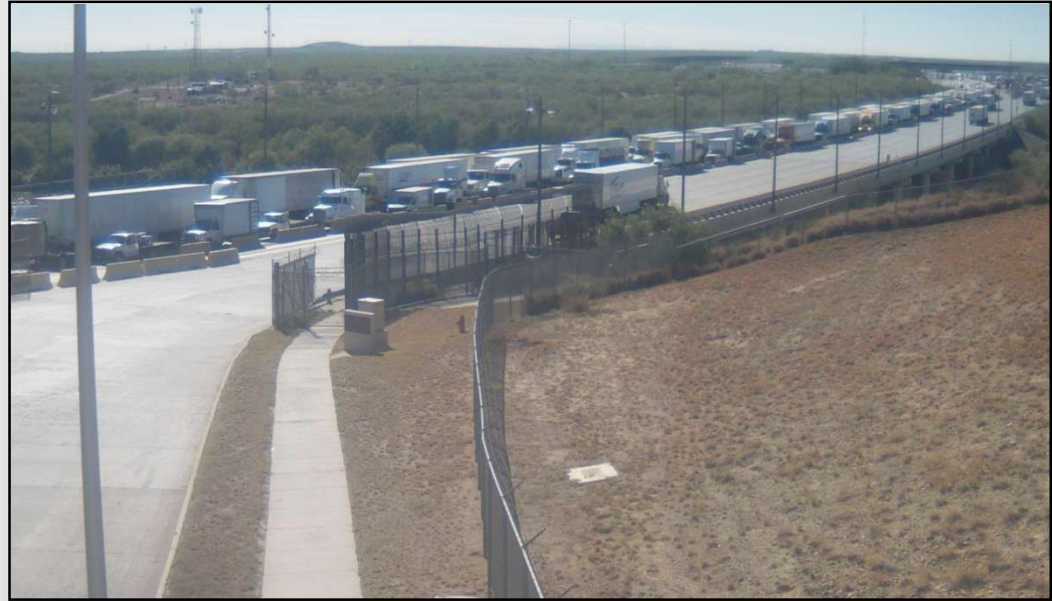
- Innovative intersection improvements
- Traffic signal timing improvements





- Long delays and congestion
- Adjacent to the World Trade Bridge which is the busiest inland port in the United States
- Heavy truck traffic

**The goal of the project is to improve safety and increase the traffic carrying capacity on FM 1472.**



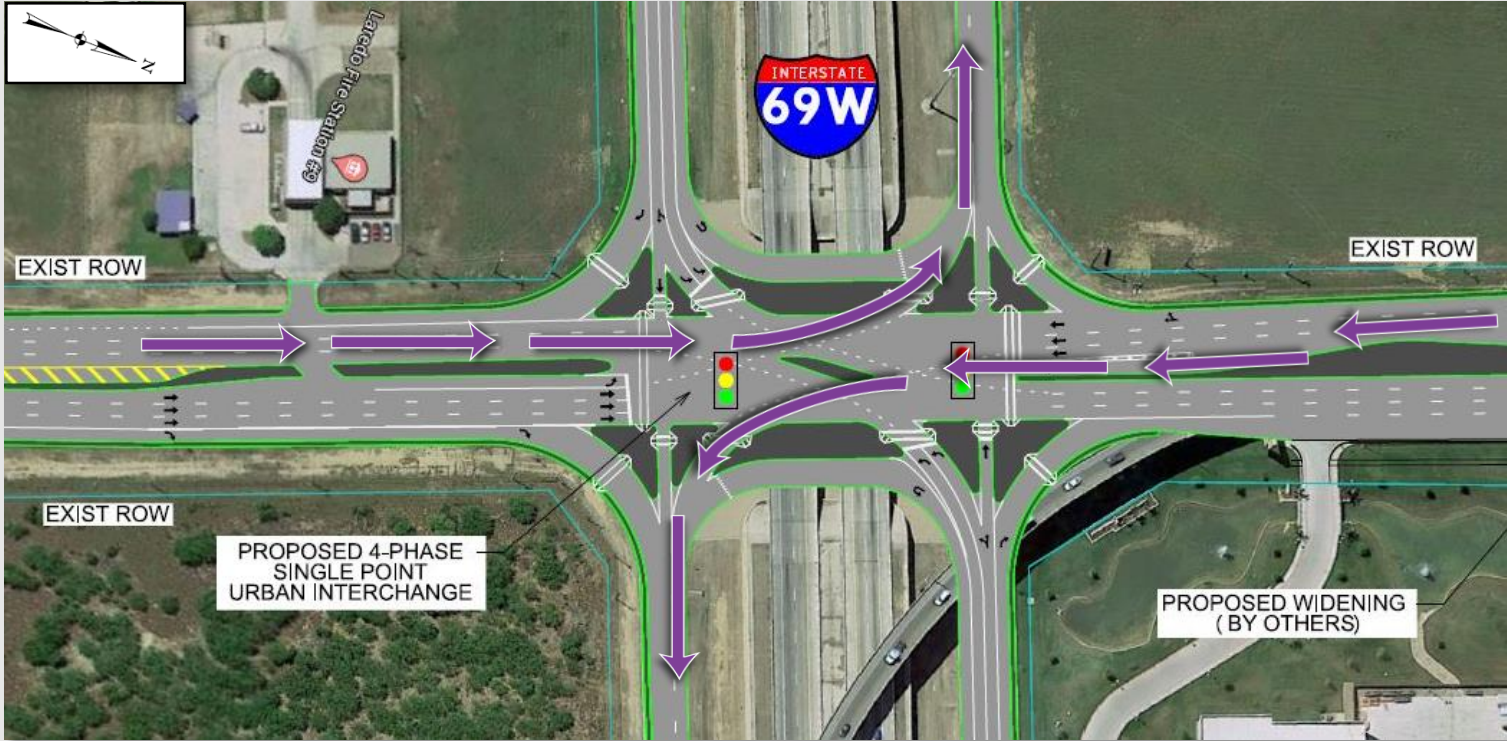


## 4 Phase Single Point Urban Interchange



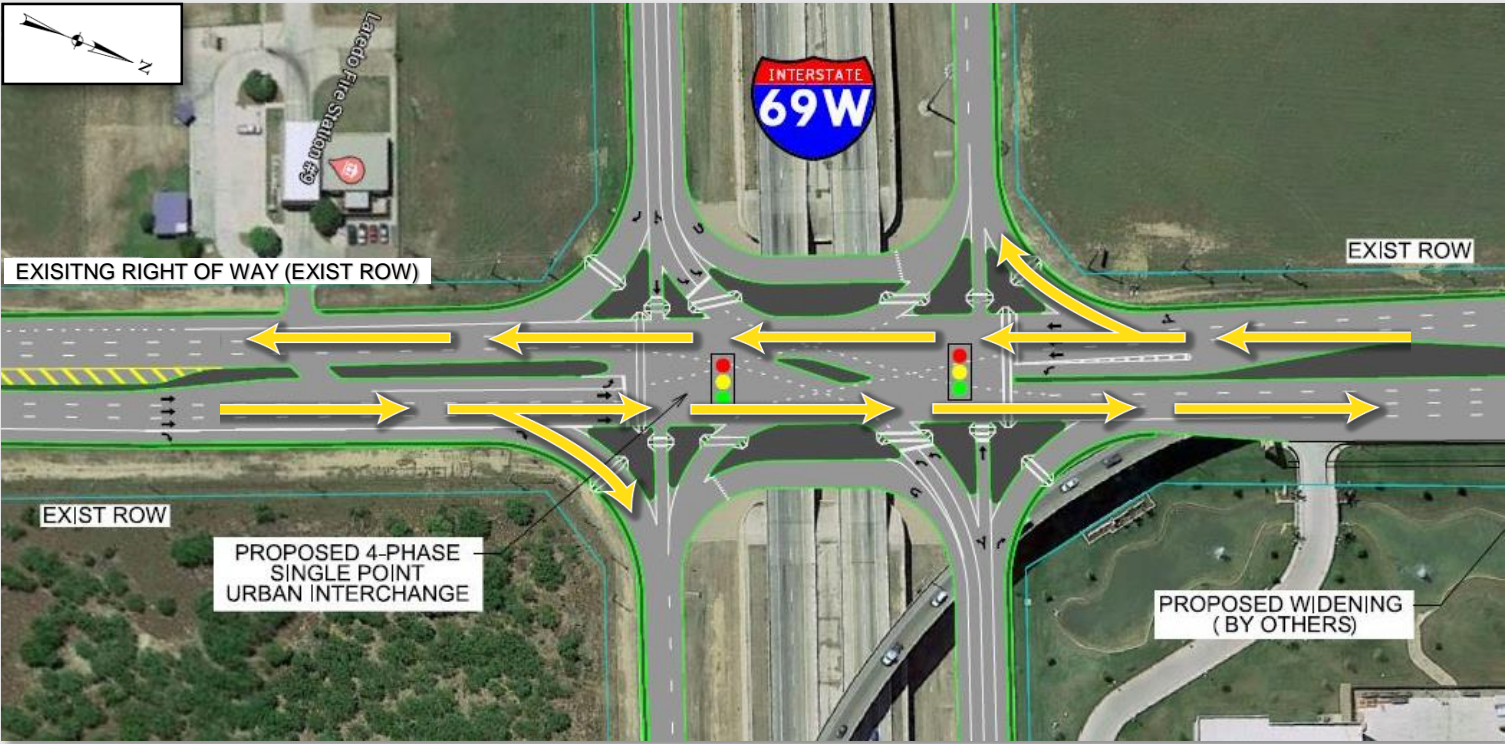


## 4 Phase Single Point Urban Interchange





## 4 Phase Single Point Urban Interchange





## 4 Phase Single Point Urban Interchange



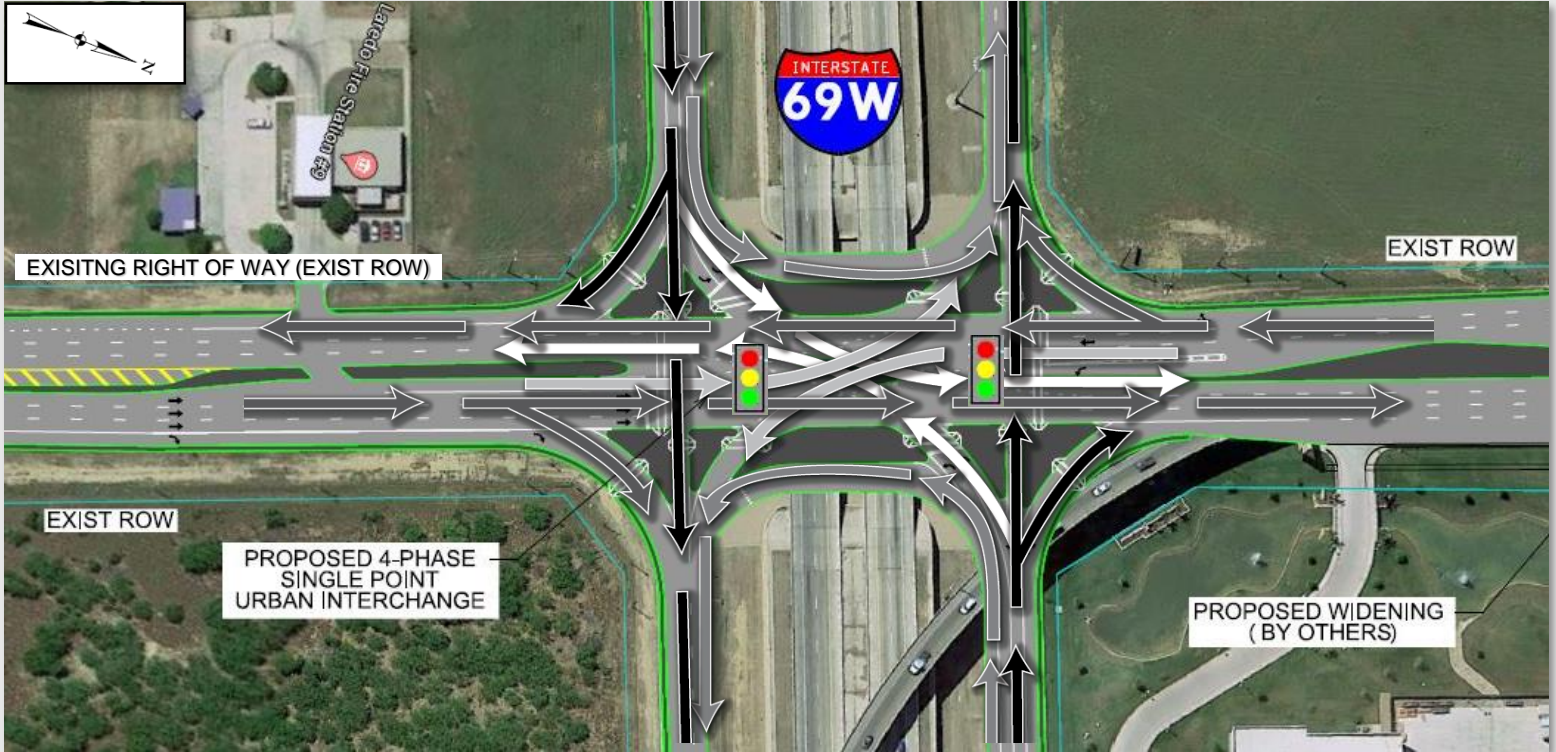


## 4 Phase Single Point Urban Interchange



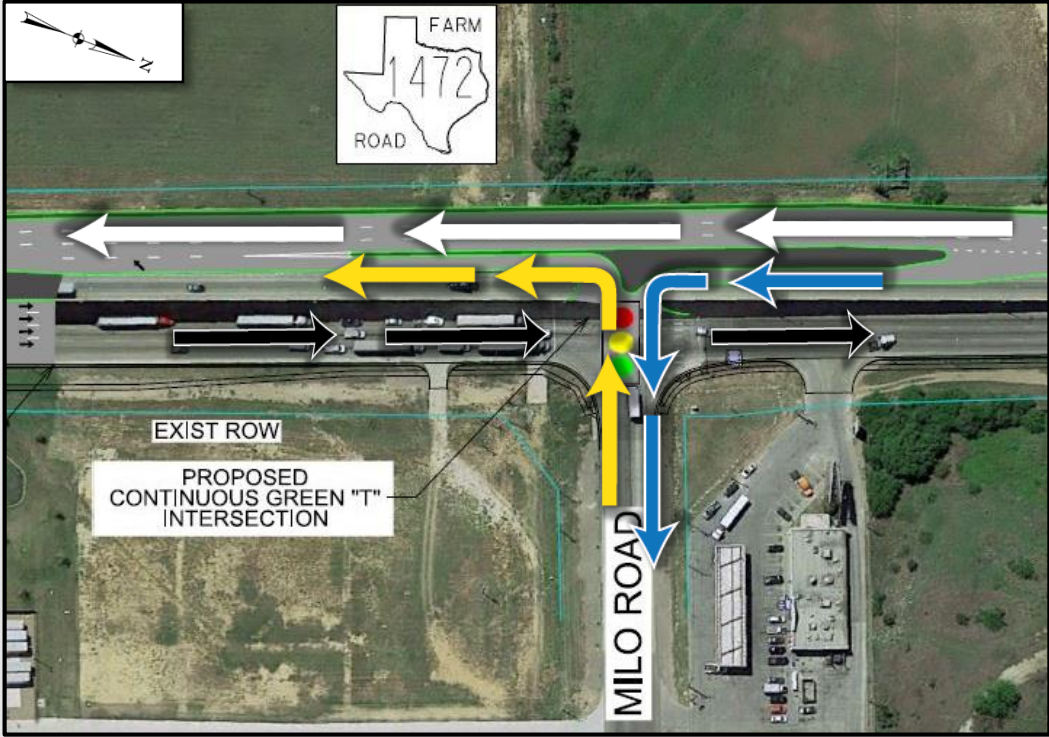


## 4 Phase Single Point Urban Interchange



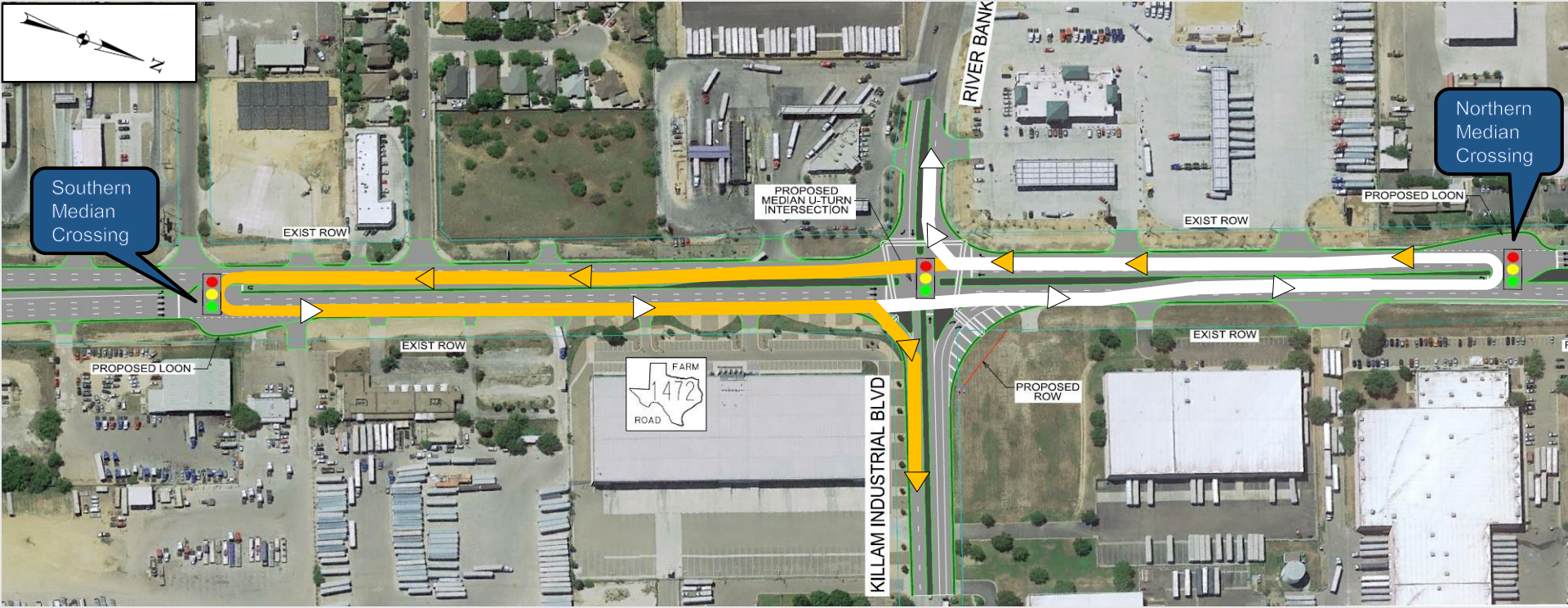


## Continuous Green “T” Intersection



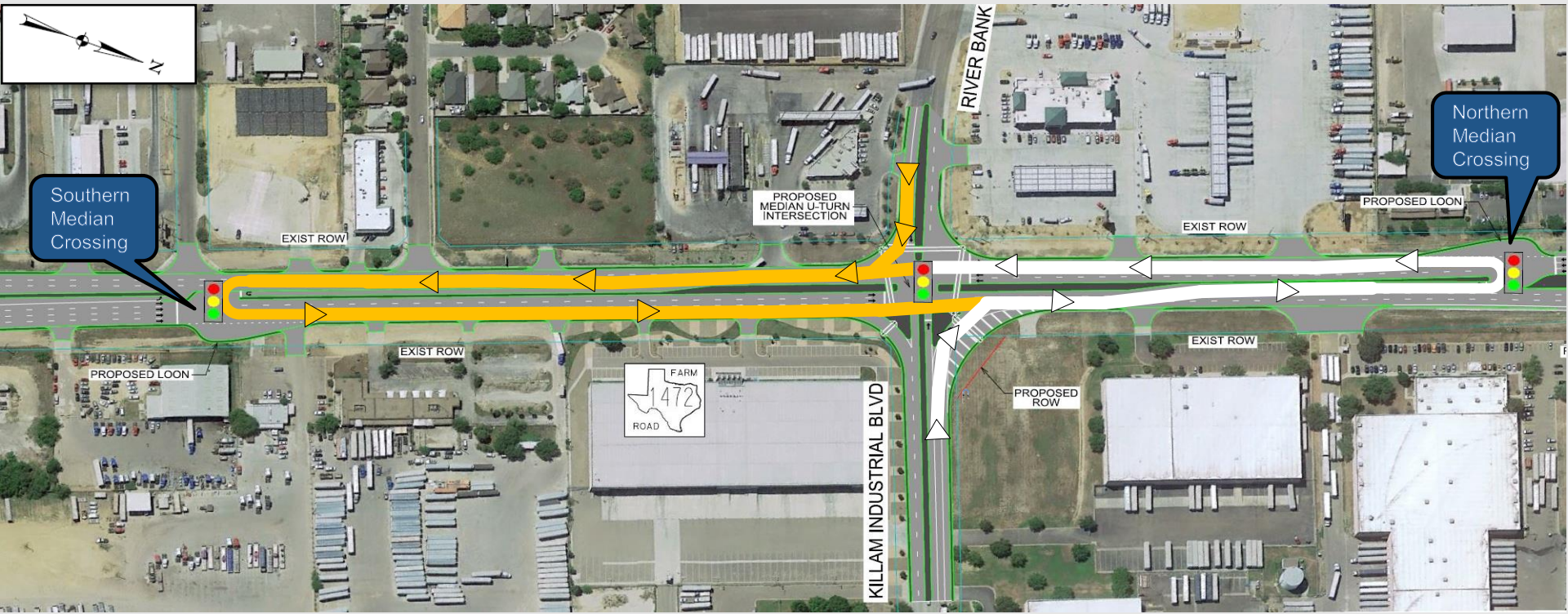


## Median U-Turn Intersection



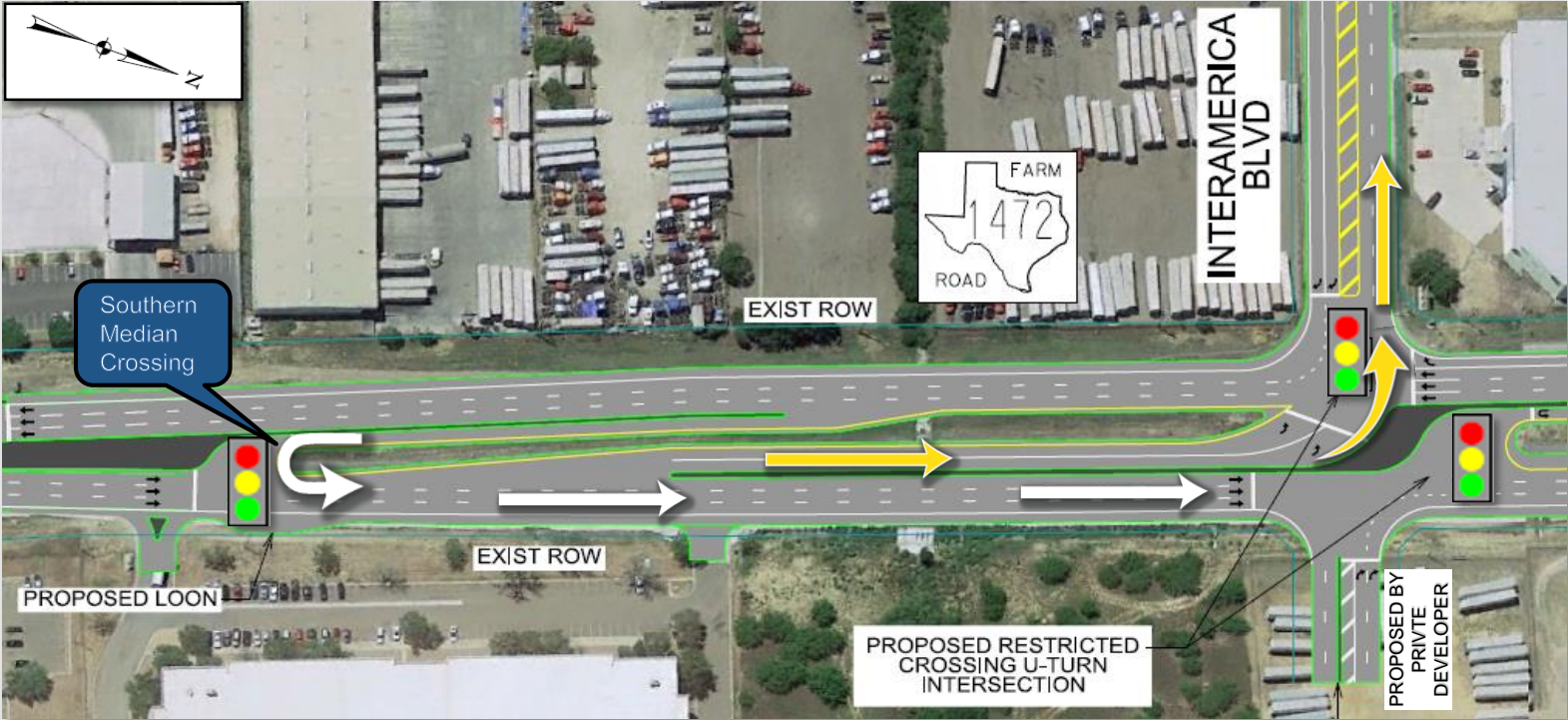


## Median U-Turn Intersection



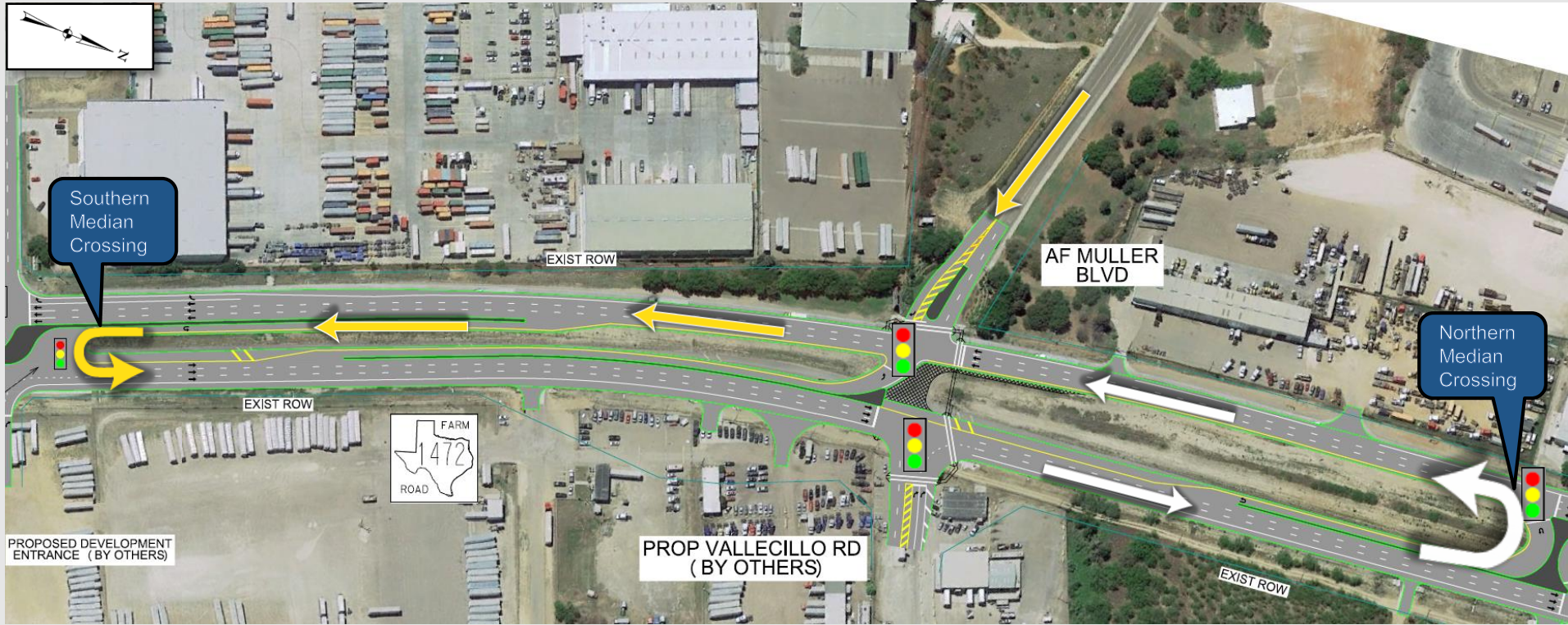


## Restricted Crossing U-Turn



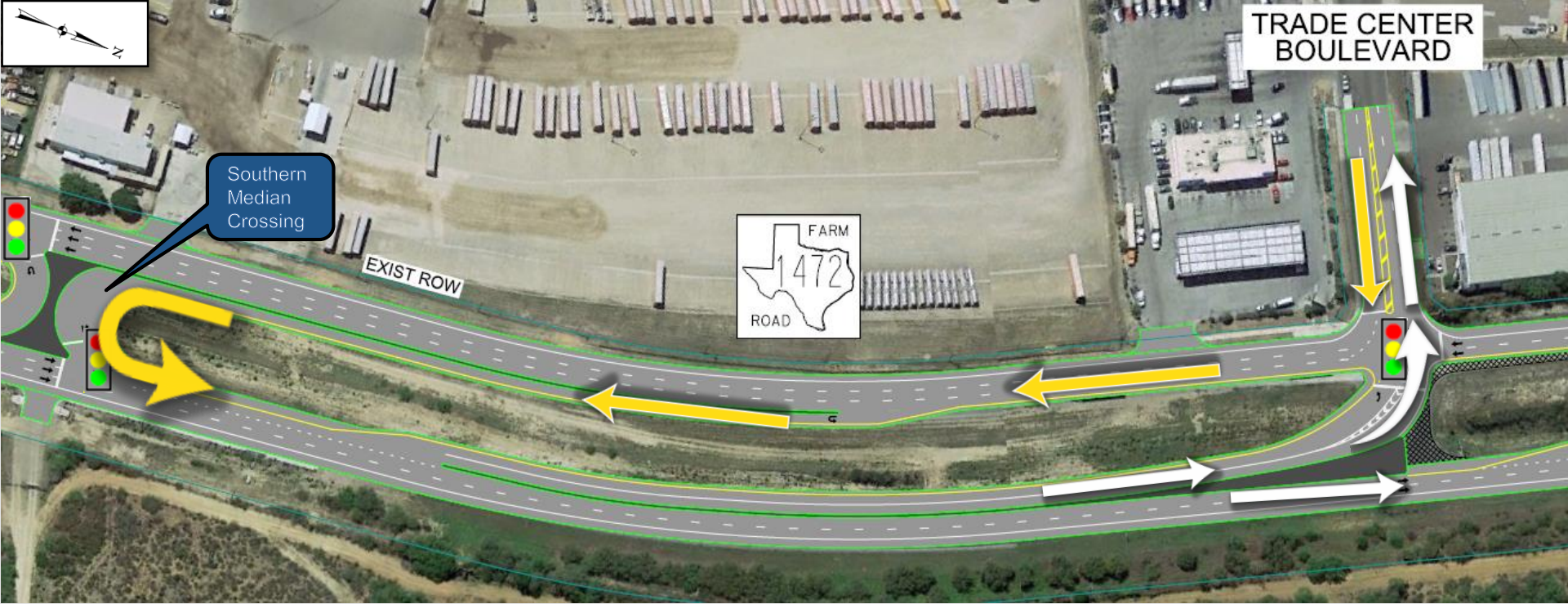


## Restricted Crossing U-Turn





## Restricted Crossing U-Turn



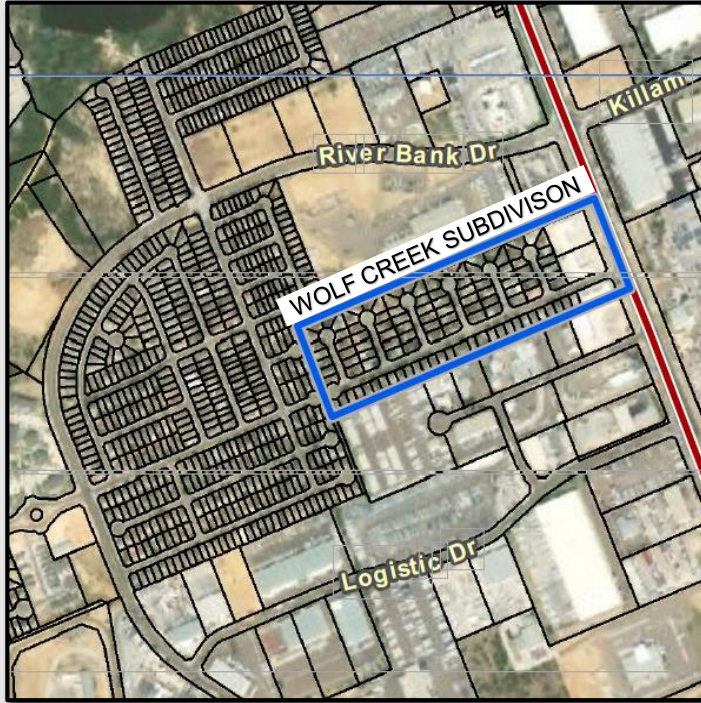


## Restricted Crossing U-Turn



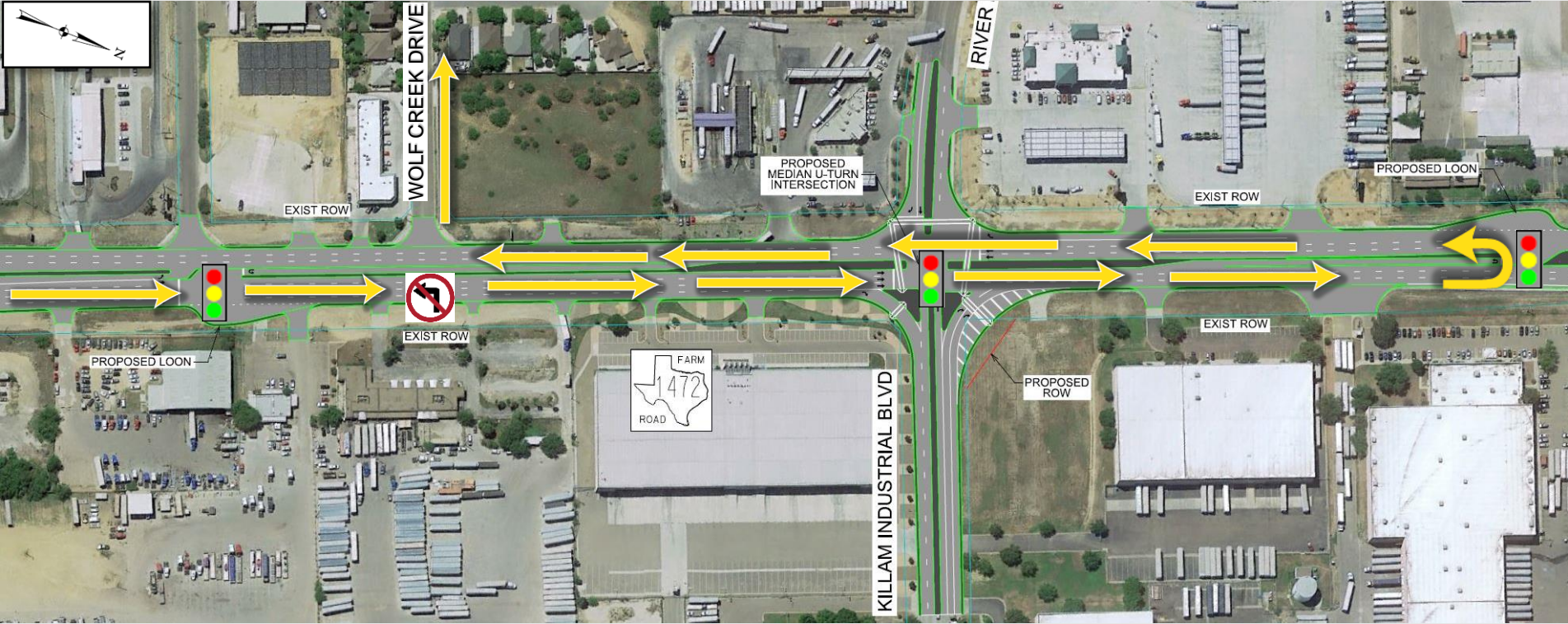


## Wolf Creek Subdivision





## Wolf Creek Subdivision





### Anticipated Cost

- Construction Cost = \$4.5 million
- Project Cost = \$5.2 million

### Anticipated Schedule

- Construction Begin: 2022
- Construction End: 2024



**The environmental review, consultation, and other actions required by applicable Federal environmental laws for this project are being, or have been, carried-out by TxDOT pursuant to 23 U.S.C. 327 and a Memorandum of Understanding dated December 9, 2019, and executed by FHWA and TxDOT.**

**All proposed work being considered in this study is within existing TxDOT owned right of way.**



- Archeology and Historical Resources - No Impacts
- Biology – No Significant Biological Impacts anticipated
- No water resources, protected lands or refuges are found within the project area

Due to the nature of the project, the following environmental subjects were not applicable to the project and were not evaluated:

- Air Quality
- Traffic Noise
- Community Impacts
- Hazardous Materials



Submit comments by:

- Emailing: [Dennice.Garza@txdot.gov](mailto:Dennice.Garza@txdot.gov)
- Calling: (956) 712-7417
- Download a comment form from [www.txdot.gov](http://www.txdot.gov) and to mail to:

Texas Department of Transportation  
ATTN: Dennice Garza - FM 1472 Project  
1817 Bob Bullock Loop  
Laredo, TX 78043

While comments are always welcome, they must be received on or before **Wednesday, April 21, 2021** to be included in the official meeting documentation.

The public may call project staff at (956) 712-7417 during regular office hours or email project staff at any time in the project development process with additional questions or comments.



# **Thank you for attending this virtual public meeting**

**Please remember to submit comments by  
Wednesday, April 21, 2021.**