



WORLD TRADE BRIDGE EXPANSION PROJECT FACT SHEET



World Trade Bridge Port of Entry (POE) to the International Boundary with Mexico (Rio Grande)
CSJ: 0922-33-213

Description

The City of Laredo, in cooperation with the Texas Department of Transportation and Federal Highway Administration, proposes to construct an additional eight-lane bridge for northbound traffic adjacent and parallel to the existing eight-lane World Trade Bridge. The expansion project would also construct an additional two lanes for southbound traffic on the north side of the existing bridge.

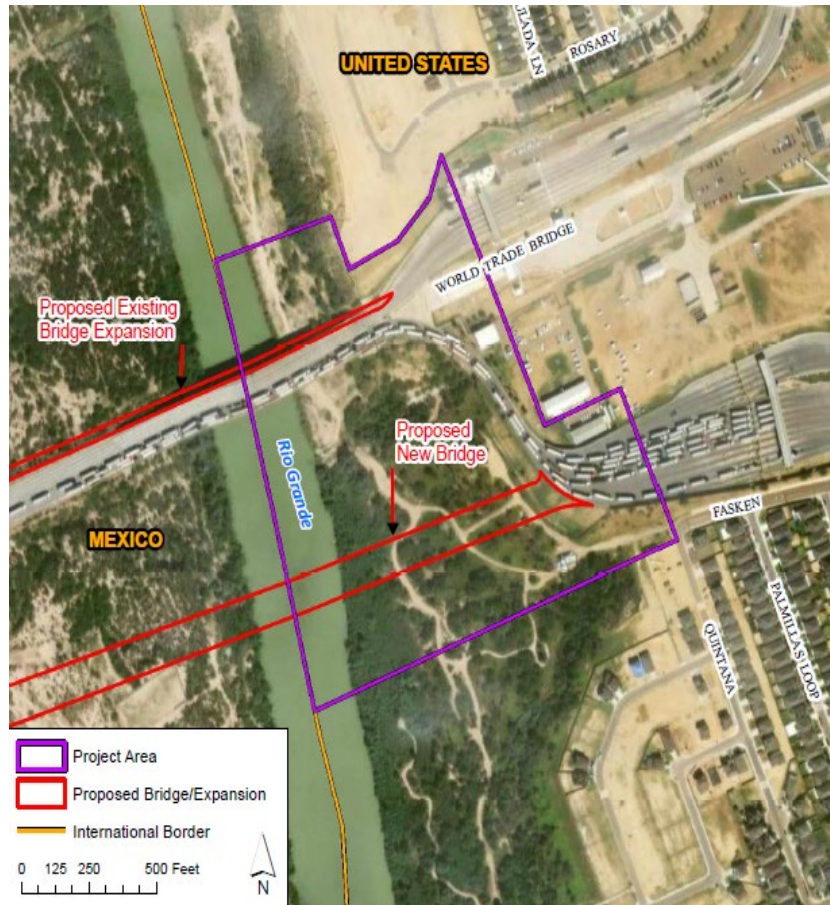
Purpose

The purpose of the proposed project is to accommodate increasing commercial traffic volume, improve security and vehicular safety, and reduce northbound wait times. It would allow for more efficient separation of commercial freight as trucks approach the POE.

Need

The proposed project is needed to alleviate the critical bottleneck and congestion that has been identified by the City of Laredo between the U.S. and Mexico border and the World Trade Bridge POE. The existing World Trade Bridge is one of the busiest commercial POEs on the Texas/Mexico border and the third busiest port in the country.

Location



Details

Project Length:
1,479 feet

Estimated Construction Cost:
\$24.1M

Right-of-Way Acquisition:
Approximately 6.07 acres

Temporary Easements:
Approximately 3.41 acres

Contact Information

Ramon Chavez, P.E.,
City Engineer
City of Laredo
rchavez@ci.laredo.tx.us
(956) 791-7346



For additional project information, scan the QR code and search keyword "World Trade Bridge"

Proposed Schedule

Environmental
Process Start
March 2023

Public Meeting
April 2024

Draft Environmental
Assessment
May 2025

Public Hearing
June 2025

Final Environmental
Assessment & FONSI
September 2025

Construction
Start
Summer 2026