



VIRTUAL PUBLIC MEETING WITH IN-PERSON OPTION



WORLD TRADE BRIDGE EXPANSION

World Trade Bridge Port of Entry (POE) to the International Boundary with Mexico (Rio Grande)
CSJ: 0922-33-213



TUESDAY, April 9, 2024

4:00pm to 7:00pm

BARBARA FASKEN RECREATION CENTER
15201 CERRALVO DRIVE
LAREDO, TEXAS 78043

Directions to the In-Person Public Meeting

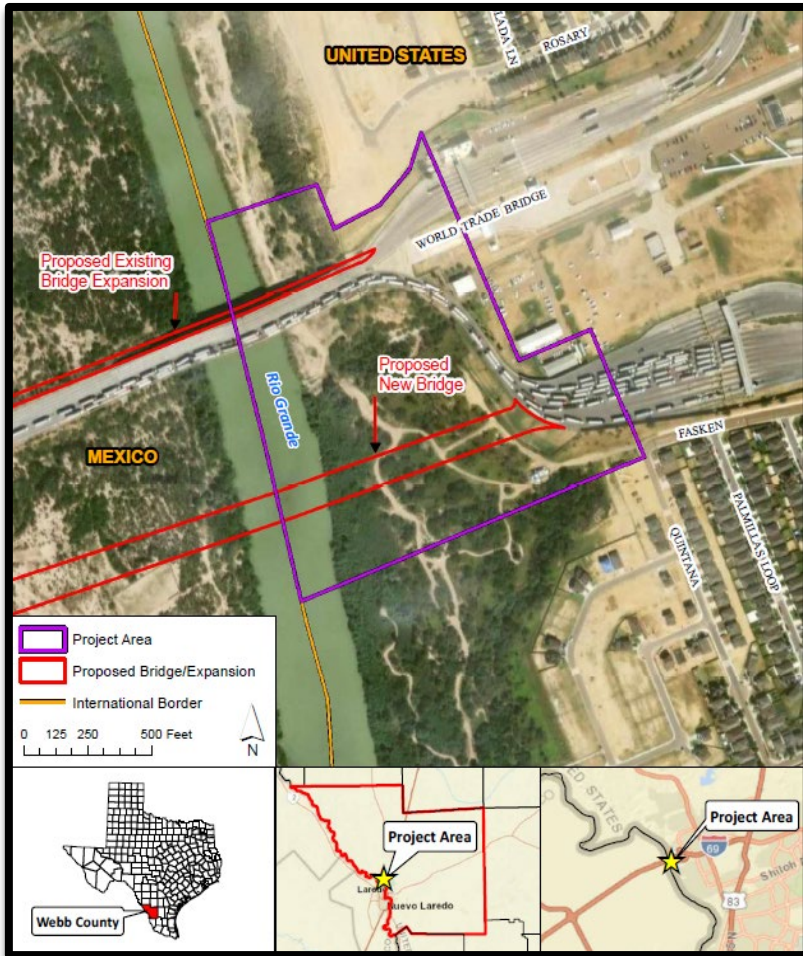
15201 Cerralvo Drive, Laredo, Texas 78045

Directions from South:

- Head north on US-59.
- Continue onto I-69W/US- 59.
- Turn right onto Riverbank Drive.
- In approximately 0.6 miles, turn right onto Cerralvo Drive.
- The destination will be on your left in approximately 0.3 miles.

Directions from North:

- Take I-35 S to exit 8 to merge onto I-69W/US-59 towards World Trade Bridge
- Turn right onto Riverbank Drive.
- In approximately 0.6 miles, turn right onto Cerralvo Drive.
- The destination will be on your left in approximately 0.3 miles.



Virtual Public Meeting

The Virtual Public Meeting can be viewed any time beginning on Monday, April 8, 2024 at 5:00pm through Wednesday, April 24, 2024 at 11:59pm. You can access the Virtual Public Meeting by visiting www.txdot.gov or by scanning the QR code found below using a phone or tablet. Type the keyword "World Trade Bridge" into the search box.



Contact Information:

Ramon Chavez, P.E.
City Engineer
City of Laredo
rchavez@ci.laredo.tx.us
(956) 791-7346

