

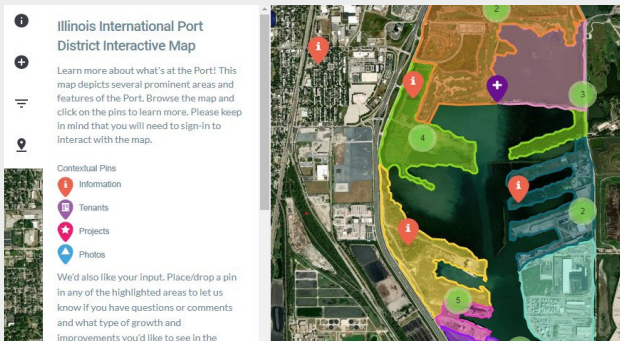


# Bang the Table Fact Sheet

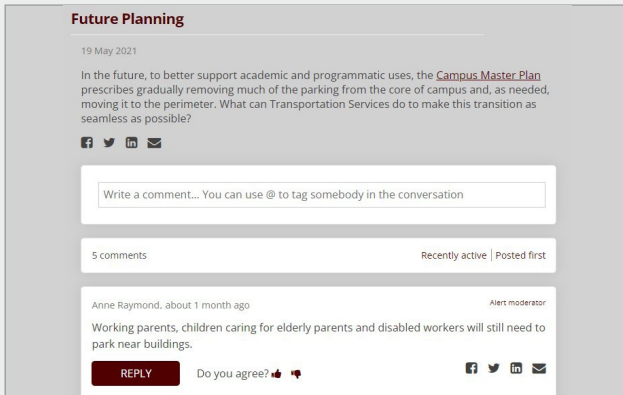
Transportation Planning and Programming Division (TPP) Public Involvement Section

## Overview

Bang the Table is an online platform that contains a suite of engagement tools focused on encouraging different degrees of community collaboration. With eight tools from which to choose, they range from interactive maps and idea boards to forums and Q&A modules. This easy-to-use system helps to inform stakeholders and foster mutual understanding and trust in the planning process. Bang the Table facilitates engagement that fits any project's needs, whether that's a single outreach effort, a multi-phase campaign that evolves across the life of a project, or anything in between. More information on online engagement vendors can be found [here](#).



Drop pin/comments on interactive maps



Forums have option for public sharing and reaction

## Project Examples

- [www.agsonthemove.com](http://www.agsonthemove.com)
- [www.engage.h-gac.com](http://www.engage.h-gac.com)
- [www.engage.dnr.state.mn.us](http://www.engage.dnr.state.mn.us)

## For More Information

Please contact your local PI Specialist for more information <https://tntoday.dot.state.tx.us/tpp/Pages/Public-Involvement-Contacts.aspx>.

Consultant partners, please contact Susan Howard for more information at [Susan.Howard@txdot.gov](mailto:Susan.Howard@txdot.gov).

## Benefits

- Clear, information-focused design makes complex concepts accessible and encourages feedback.
- Maximize reach and flexibility with mobile-friendly design and printable surveys.
- Analyze platform data by producing and downloading graphical reports or export to Excel.
- Easily summarize public comments with built-in sentiment analysis.
- Produce source and activity report tracking across engagement tools and phases.

## Raising Awareness

- Engagement tools can be shared from TxDOT project pages, email invitations, social media posts, QR codes, and more.
- If enabled, the public can share their input with others on the platform and through social media to encourage increased participation and to help develop consensus.

## Key Design Features

- Engagement tools can be launched individually and across the duration of a project, edited or discontinued as needed.
- Input from all activities for a project is stored in a single database for ease of access and analysis.

## Accessibility

- Platform tools provide for compliance accessibility through screen readers and printable formats, and accommodates manual translations or automated translations through Google Translate.

## Important Considerations

- Six weeks lead time to create site, depending on complexity.
- Dependent on degree of collaboration, may require routine moderation and engagement by platform/project team.
- Project pages will be created and maintained on [www.txdot.gov](http://www.txdot.gov), with a link to the online engagement tool.

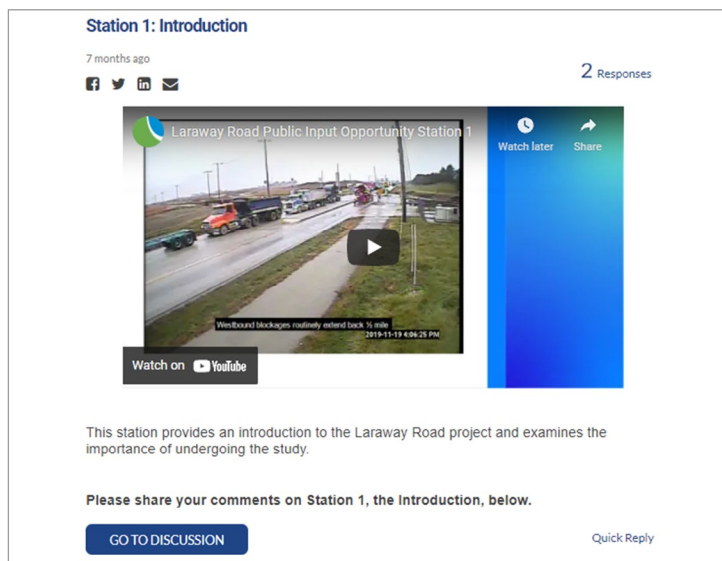
## How to Create/Next Steps

- Contact the PI Section to discuss your online engagement needs as soon as possible to provide adequate planning time.
- As part of the planning process for online engagement, the PI Section can provide guidance and checklists to first ensure this is the right outreach strategy.
- Allow ample time to collect high-resolution photos, visuals and content prior to site creation.
- Work with the PI Section team to determine a feasible launch timeline.

## Bang the Table Engagement Tools

Bang the Table offers eight tools designed to facilitate different levels of public interaction with the project team and each other.

### Forums



**Station 1: Introduction**  
7 months ago  
2 Responses

Laraway Road Public Input Opportunity Station 1

Watch later Share

Watch on YouTube

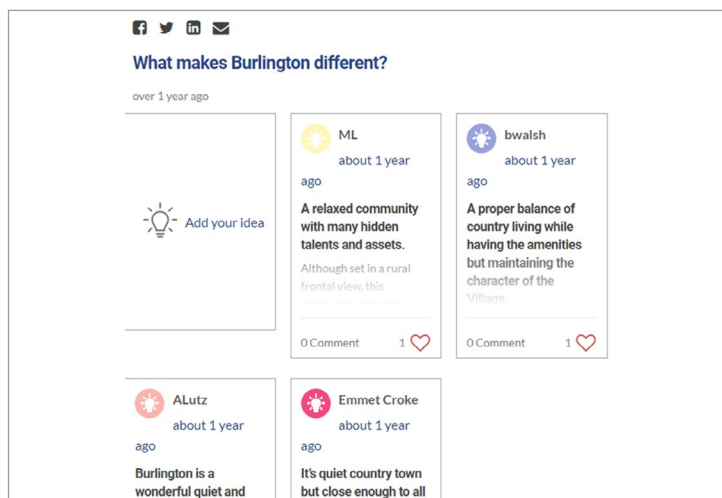
This station provides an introduction to the Laraway Road project and examines the importance of undergoing the study.

Please share your comments on Station 1, the introduction, below.

[GO TO DISCUSSION](#) Quick Reply

Forums provide the opportunity for the project team to lead a public discussion on the topics and issues that matter most to a project. Project team members can contribute and are aided by 24/7 monitoring for inappropriate posts. YouTube videos can be linked with other platform tools to allow users to elaborate on interests and concerns and build a mutual understanding.

### Idea Wall



**What makes Burlington different?**  
over 1 year ago

**ML** about 1 year ago  
A relaxed community with many hidden talents and assets. Although set in a rural frontal view, this

**0 Comment** 1 ❤️

**bwalsh** about 1 year ago  
A proper balance of country living while having the amenities but maintaining the character of the Villana.

**0 Comment** 1 ❤️

**ALutz** about 1 year ago  
Burlington is a wonderful quiet and

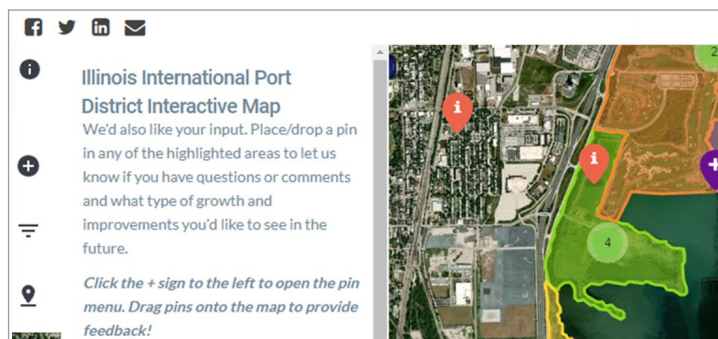
**Emmet Croke** about 1 year ago  
It's quiet country town but close enough to all

This tool replicates the idea wall experience in a digital format, allowing participants to brainstorm ideas in response to a prompt in a fun, freeform format. Project tool and public comments can be shared through social media to expand conversation and awareness. It also has the option to allow the public to share images, helping illustrate ideas and reactions to lend support and input on others' comments.

### Stories

Build mutual respect and understanding by allowing the public to share their experiences about what a project means to them with the Stories tool. The project team can moderate what is shared and whether to allow photo and video content to accommodate a deeper personal experience.

### Places



**Illinois International Port District Interactive Map**  
We'd also like your input. Place/drop a pin in any of the highlighted areas to let us know if you have questions or comments and what type of growth and improvements you'd like to see in the future.

Click the + sign to the left to open the pin menu. Drag pins onto the map to provide feedback!

Bang the Table's interactive mapping tools allow the public to mark specific locations with customizable pins. Different pin types help prompt users to provide the feedback the project needs most. For further interaction, this tool allows for adding GIS overlays and embedding survey questions, and allows the public to share photos and comments.

### Guestbook

Provide a convenient means for public comment with the Guestbook tool. These standalone messages allow participants to express their view without comment or reaction from others.

### Q&A

The Q&A tool allows the public to ask questions to the project team. Both question and response can be kept private or shared publicly and tagged by topic to organically create an easily-searched project FAQ resource.

### Polls

Polls act as a miniature survey that is easy to both implement and to respond. Use polls on their own or incorporate them into outreach events for feedback and rapid response. Live preliminary results can be shown to users to drive discussion and show them their voice is being heard.

### Surveys

Surveys provide for easy collection of data with a variety of response types in a format most familiar to the public. Support for embedding pictures, videos, links, and more, into questions broadens the range of questions that can be asked. Surveys can also aid in routine project tasks such as demographic collection.