



MetroQuest Fact Sheet

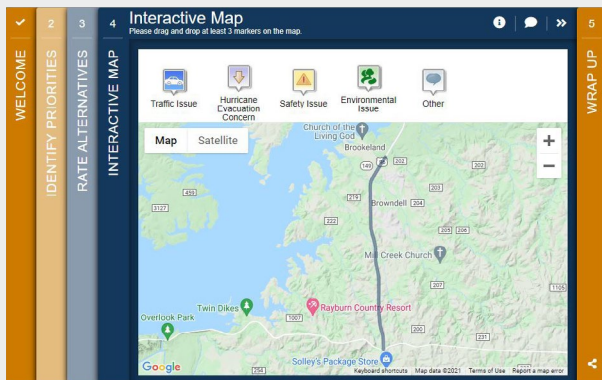
Transportation Planning and Programming Division (TPP) Public Involvement Section

Overview

MetroQuest is an online survey tool that offers the public a way to learn about and provide feedback on TxDOT projects. This survey tool facilitates the opportunity to collect meaningful input from the public on priorities, visual preferences, map markers, scenarios, trade-offs and budgeting. It features visually compelling surveys through the use of images, interactive maps and colorful buttons. More information on online engagement vendors can be found [here](#).



Five-screen Survey Design



Interactive Map Screen

Project Examples

- <http://demo.metroquestsurvey.com/em28>
- [US 96 from RE 255 to Loop 149 \(metroquestsurvey.com\)](http://demo.metroquestsurvey.com)
- <https://kendallgateway-demo.metroquest.com/?s=3>
- <https://reimagine10english-demo.metroquest.com/>

For More Information

Please contact your local PI Specialist for more information <https://tntoday.dot.state.tx.us/tp/ Pages /Public-Involvement-Contacts.aspx>.

Consultant partners, please contact Susan Howard for more information at Susan.Howard@txdot.gov.

Benefits

- Offers an interactive survey tool that is visually appealing.
- Surveys can be accessed across various devices – smartphones, desktop, tablets, kiosks.
- Provides opportunity to educate the public and collect informed input quickly.
- Provides robust quantitative and qualitative data.

Raising Awareness

- Surveys can be shared in a variety of ways, including email invitations, QR codes, social media posts, project page buttons, etc.

Key Design Features

- The online tool comprises a series of five “screens” that guide the public through the process of learning about the project and providing input. MetroQuest offers 14 screen template options with the Welcome and Wrap Up screens required for each survey. Please refer to the back of this fact sheet for a description of the screens.

Accessibility

- The online tool is not ADA accessible. To address ADA accessibility, MetroQuest provides PDF and Word versions of surveys in fillable screen reader-friendly and printable formats. Another option to address ADA accessibility is to link a SurveyMonkey version of your survey to MetroQuest. Data collected through these methods will have to be entered manually into MetroQuest to ensure it is captured in your survey results data.
- Aside from English, the platform can only accommodate one additional language through manual translation.

Important Considerations

- Six weeks lead time to create site.
- MetroQuest surveys cannot be edited after they are launched.
- MetroQuest surveys do not require any moderation.
- MetroQuest only offers a robust survey capability.
- Project pages will be created and maintained on www.txdot.gov, with a link to the online engagement tool.

How to Create/Next Steps

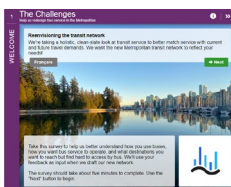
- Contact the PI Section to discuss your online engagement needs as soon as possible to provide adequate planning time.
- As part of the planning process for online engagement, the PI Section can provide guidance and checklists to first ensure this is the right outreach strategy.
- Allow ample time to collect high-resolution photos, visuals and content prior to site creation.
- Work with the PI Section team to determine a feasible launch timeline.

MetroQuest Screens

MetroQuest offers 14 customizable survey screen templates and requires five screens for each survey. For more information about a screen, please click on it to be directed to the MetroQuest screen guide.

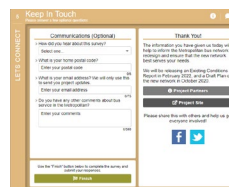
Required Screens

The Welcome and Wrap Up screens are required for each survey.



Welcome Screen

The Welcome screen is used to briefly set the context for the project and encourage the public to participate. It is a visually appealing screen with room for background and a call to action.



Wrap Up Screen

The Wrap Up screen collects contact information from participants who wish to receive further information and stay involved.

Screen Template Options

A MetroQuest survey requires three screens from the following 12 different screen templates.

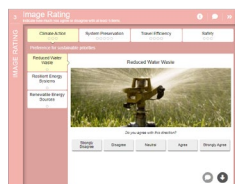
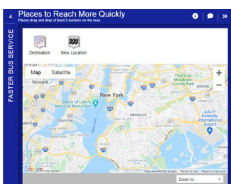


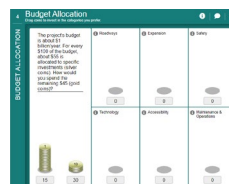
Image Rating Screen

Collects input on designs or other visual information such as options or concepts, particularly on landscape architecture or urban design.



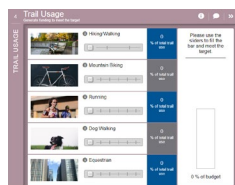
Map Marker Screen

Identifies areas of concern or where the public would like to see improvements or resource allocation. Collect location-based feedback.



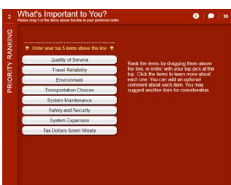
Budget Allocation Screen

Gets feedback from the community on a set of budget-related categories and educates the public on existing budgets by dragging coins into categories.



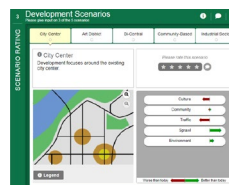
Funding Balance Screen

Asks the public to identify preferred funding options for a project or initiative by using an array of various funding sources to hit a budget target.



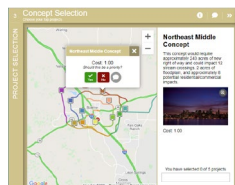
Priority Ranking Screen

Gets quality feedback from the public about issues or topics that are most important to them.



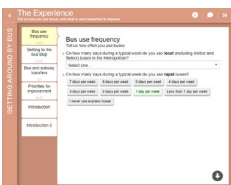
Scenario Rating Screen

Educates the public on scenarios by displaying a set of possible scenarios, plans, or options with multiple performance metrics.



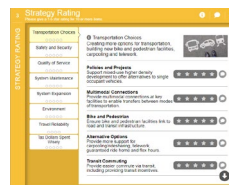
Project Selection Screen

Presents several projects on a map and collects input on which location-based projects, previously identified, should be implemented.



Standard Survey Screen

Asks a set of survey questions in a variety of formats including dropdowns, checklist, buttons, small text boxes, and comment boxes.



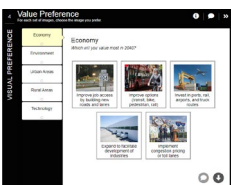
Strategy Rating Screen

Collects input on a long list of strategies, goals, ideas, or actions. Best suited to display proposed policy or implementation concepts.



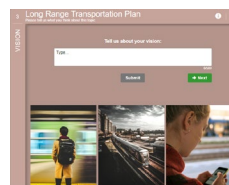
Tradeoffs Screen

Educates the public on the fact that choices have trade-offs and ask them to position themselves on the respective spectrum.



Visual Preference Screen

Displays sets of visual choices and asks the public which one they prefer, comparing the images representing concepts or ideas to each other.



Vision Statement Screen

Collects open-ended ideas or visions for a community.