

Welcome

Why am I here?

Virtual Public Meeting

Wednesday, May 26, 2021

Pecos Relief Route

From US 285 north of Pecos to US 285 south of Pecos
CSJ: 0906-18-016 ★ Reeves County, TX

- Learn about the project
- Review considerations within the study area
- Provide comments

Se Habla Español: Para más detalles e información acerca del proyecto en español por favor comuníquese con uno de los miembros del equipo al (512) 340-1183 y le atenderemos con gusto.

Project description

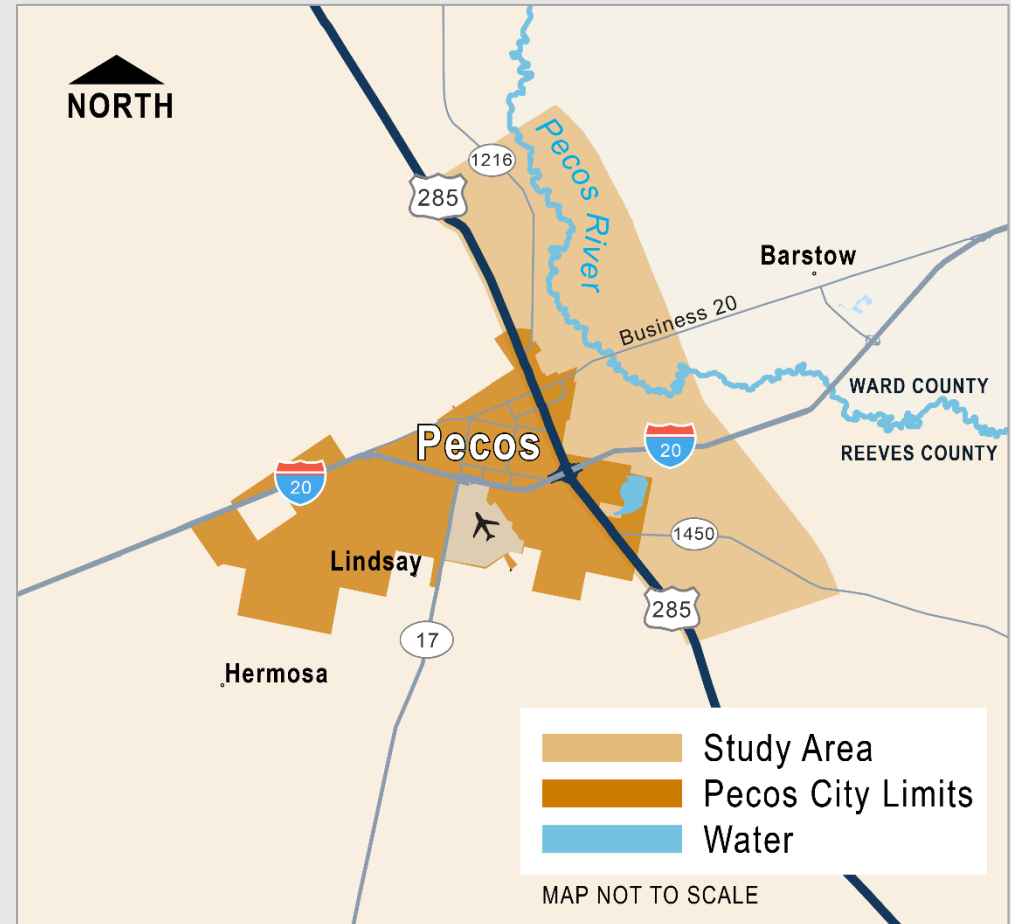


THE PECOS RELIEF ROUTE IS PART OF TxDOT'S PERMIAN PROMISE.

Following the 2019 Pecos Truck Route study prepared by Reeves County, **TxDOT will advance and further refine a relief route for US 285 around the east side of Pecos.**

TxDOT is currently reviewing a study area (pictured at right) for considerations that may impact proposed route locations.

The project is still in the early phases of a multi-phased process and refinements to the route will occur. No decisions have been made about the route's final location.



PROJECT LIMITS

US 285 north of Pecos to US 285 south of Pecos

LENGTH

Approximately 8 miles (subject to change)

LOCATION

Reeves County

What is the problem TxDOT is trying to solve?

The capacity of US 285 through Pecos is inadequate to meet current and future traffic volumes, resulting in congestion, reduced mobility, poor traffic flow, and reduced safety.

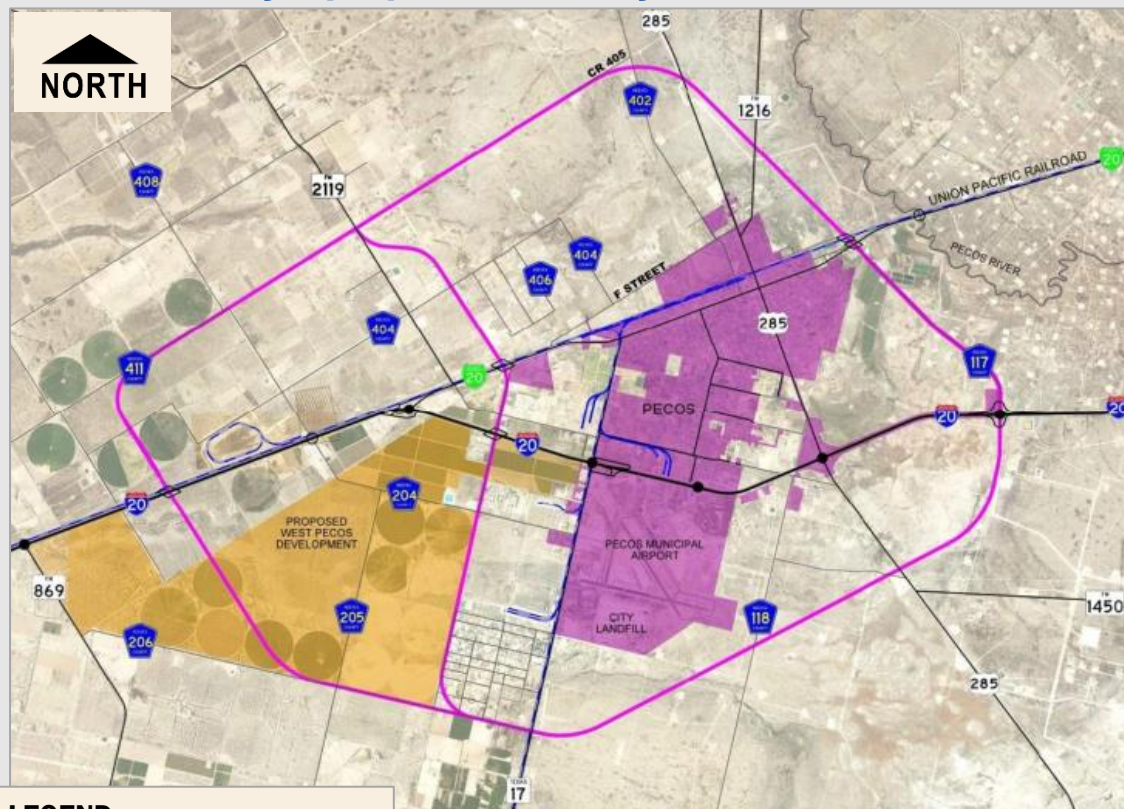
See supporting information in the upcoming exhibits.

What are TxDOT's goals and objectives?

- Identify a long-term solution that:
 - ✓ Improves mobility and connectivity
 - ✓ Reduces congestion
 - ✓ Increases safety
 - ✓ Minimizes impacts to the community / natural environment
- Receive and consider public input
- Determine possible route around Pecos to study
- Propose a concept for schematic design
- Develop a recommended right-of-way footprint

A relief route around Pecos has been considered for many years, most recently in the 2019 Reeves County-led Pecos Truck Route study.

Reeves County's proposed "Locally Preferred Alternative" ▼



LEGEND

- Route for Locally Preferred Alternative (proposed by Reeves County)
- Pecos City Limits
- Proposed West Pecos Development

The 2019 Reeves County Pecos Truck Route study is available upon request. Also, Reeves County is currently studying the route's location to the west of US 285 in a separate study. To learn more, contact Ana Solis, Project Representative, at (915) 260-4924.

TxDOT is taking a fresh look at the study area and will be refining the route location on the east side of Pecos.

TxDOT will review the valuable public input provided recently on Reeves County's study. We recognize that many of you may have also participated in that effort, and your previous input will be applied to our efforts moving forward.

Project process and timeline (subject to change)



PHASE I

Planning study

- Began January 2021
- Virtual Public Meeting on May 26, 2021
- Anticipated Public Meeting No. 2 in early 2022



WE ARE HERE

PHASE II

Environmental study and schematic design

- Begin schematic design in Summer 2022
- Begin environmental studies in Summer 2023
- Anticipated Public Hearing in Fall 2024
- Anticipated environmental decision in 2025

PHASE III

Final design, right-of-way acquisition and utility adjustments

- Timing dependent on funding

PHASE IV

Construction

- Timing dependent on funding

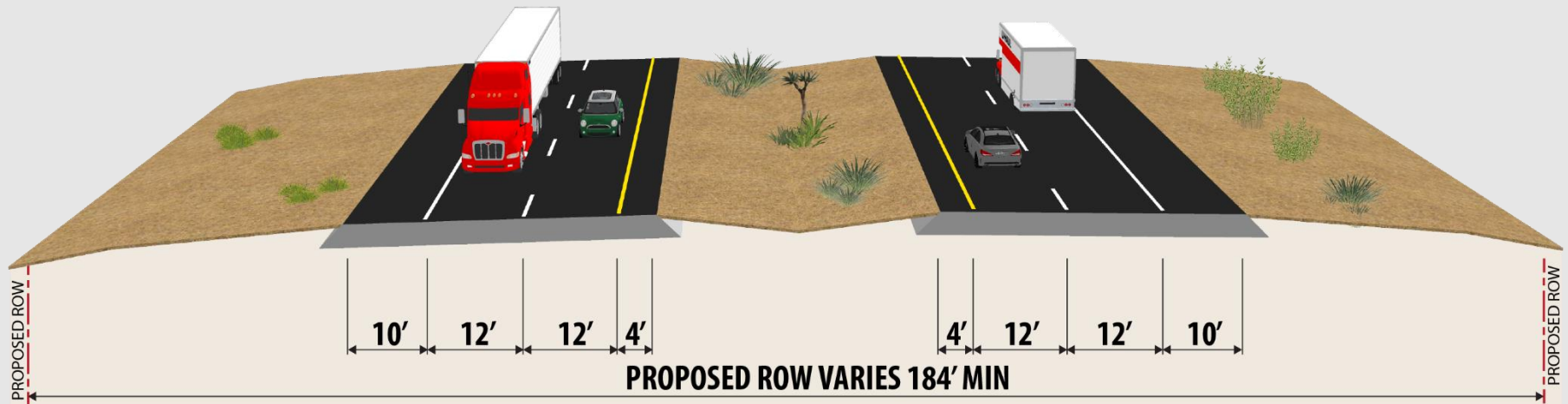
PUBLIC INVOLVEMENT

Advancement from phase to phase is contingent upon the outcome of the previous phase and funding availability.

The environmental review, consultation and other actions required by applicable federal environmental laws for this project are being, or have been, carried-out by TxDOT pursuant to 23 U.S.C. 327 and a Memorandum of Understanding dated Dec. 9, 2019, and executed by FHWA and TxDOT.

What is the proposed design concept?

This is the proposed design concept, or typical section, that TxDOT is currently considering. It features two lanes in each direction with a proposed right-of-way (ROW) width of approximately 200 feet.



SUBJECT TO CHANGE

WHAT IS A TYPICAL SECTION? This design shows you a basic blueprint of the proposed roadway. It includes where each element would be placed (e.g., a shoulder, a travel lane) and its width. It is called “typical” because these widths could expand or contract a little throughout the corridor.

What is TxDOT currently considering?



To move forward with a new relief route around Pecos, TxDOT must first consider the unique set of transportation needs specific to the US 285 corridor in the Pecos area. The team reviews data about the following topics to help inform decision making. If built, the Pecos Relief Route should improve or be aligned with goals for each topic.

Mobility

Traffic Flow

Energy Sector

Safety

Constraints

Public Input

The following exhibits detail key facts that TxDOT is considering to design a relief route.

Consider these facts:

In 2019, travel time on US 285 through the Pecos area took drivers approximately 20 minutes during peak hour.

By 2044, if TxDOT does not build a relief route, drivers could spend an additional 20 minutes.

Between 2015 and 2019, **traffic volume on US 285 through Pecos grew approximately 10% annually.**

For context: >3% annual growth is considered aggressive by experts.



By 2044, if approved, the Pecos Relief Route may carry an **average 9,400 cars and trucks per day**, and 26% of traffic may be commercial trucks.

US 285 through Pecos by 2044...

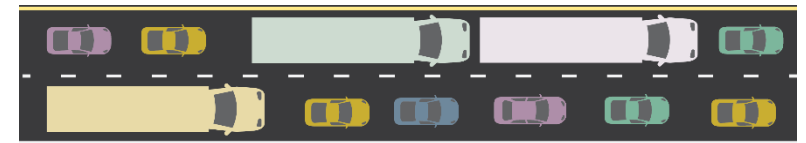
**WITH
Pecos
Relief
Route**

**ACCEPTABLE
STABLE FLOW**



**WITHOUT
Pecos
Relief
Route**

**UNACCEPTABLE
POOR FLOW**



Consider these facts:

Truck traffic varies from 20-40% along US 285 through the Pecos area.

Much of the commercial vehicle traffic is associated with the growing energy sector.

REEVES COUNTY BETWEEN 2018 AND 2020:

#1

the county with **the most spudded wells in the state with 3,136 wells** from 2018-March 2021. *A spudded well is a well that has begun drilling operations.*

#2

the county with the **second highest number of approved drilling permits in the state** at 2,049 permits from 2018-April 2021.

#2

the **second largest gas-producing county in the state** producing 2,213,496,722 thousand cubic feet of gas from 2018-Jan. 2021.

#3

the **third largest oil-producing county in the state** producing 315,383,409 barrels of oil from 2018-Jan. 2021.

SOURCE: Railroad Commission

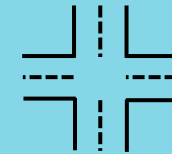
Safety considerations

Consider these facts:



x2 TIMES WORSE

Crash rates on US 285 within the study area are **about twice as high as the statewide average crash rates** for similar corridors



52% of crashes were intersection related



32% of crashes involved trucks/buses

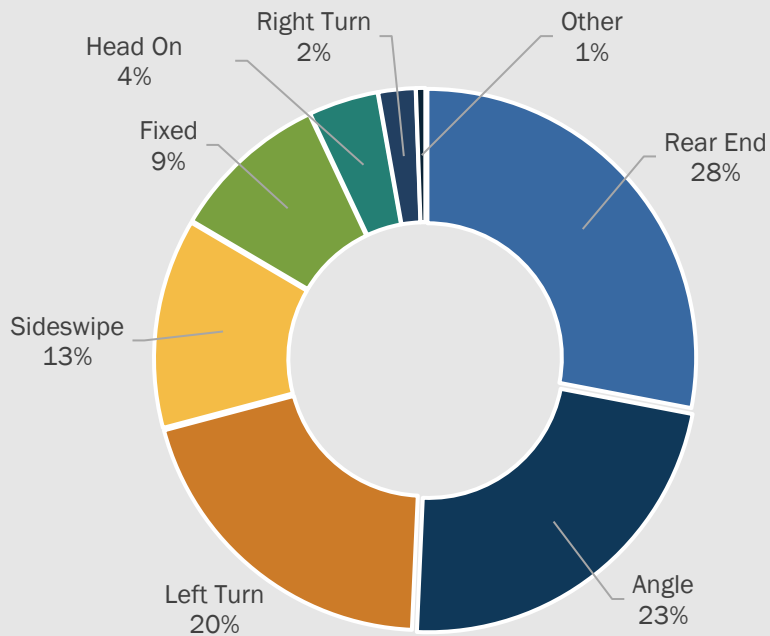


46% of crashes occurred during peak hours

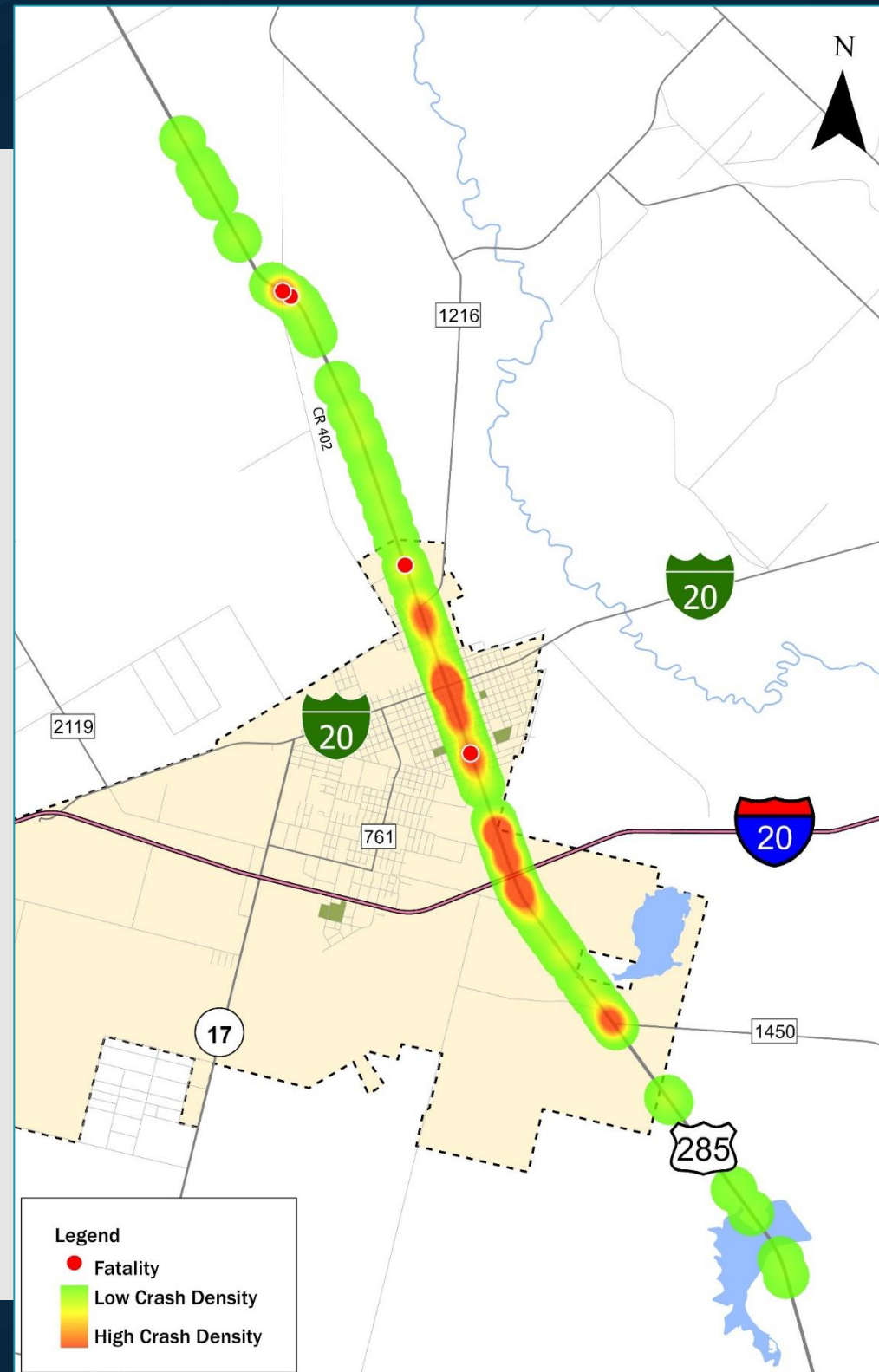
If built, a relief route would improve safety.

Safety considerations

US 285 Crash Density Map ▶ 2015-2019 Data



Crash Types ▲ Between 2015-2019



One of the elements that the project team must identify and study is environmental constraints in the study area.

Environmental constraints must be identified and considered as we aim to avoid them or to minimize any potential impact should a relief route be constructed.

Those constraints include but are not limited to: oil and gas wells; pipelines; creeks and streams; floodplain; historic sites; cemeteries; endangered species habitat; and parkland.

It is critical that we identify all potential constraints. We welcome you to review our constraints maps and let us know if something is missing, such as an unidentified cemetery.

**Please review
our constraints
maps.**

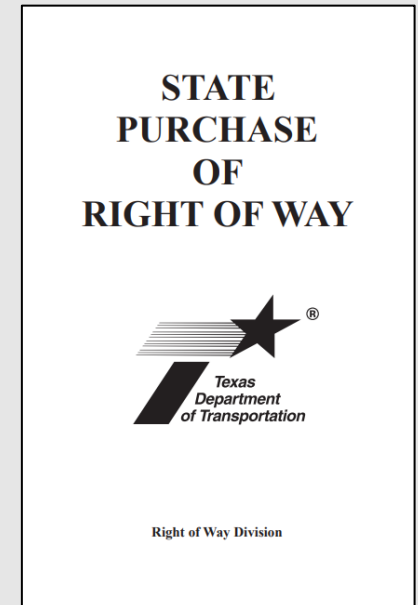
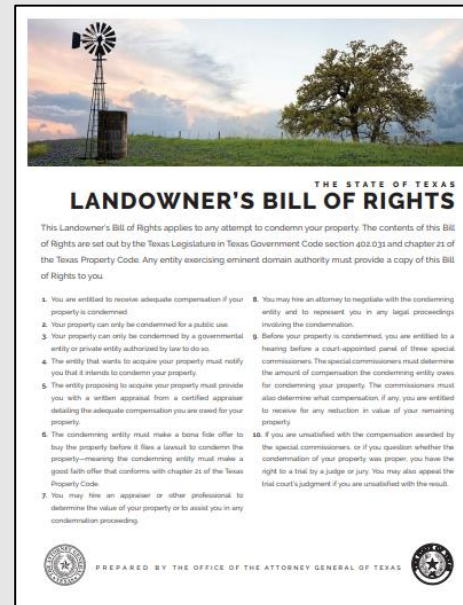
Map No. 1
**Environmental and
Community Features**

Map No. 2
Energy Sector Features

No final decisions have been made regarding the route's location, design or right-of-way footprint.

We welcome your input.

More public meetings will occur.



Available manuals on Landowner's Rights and acquisition process

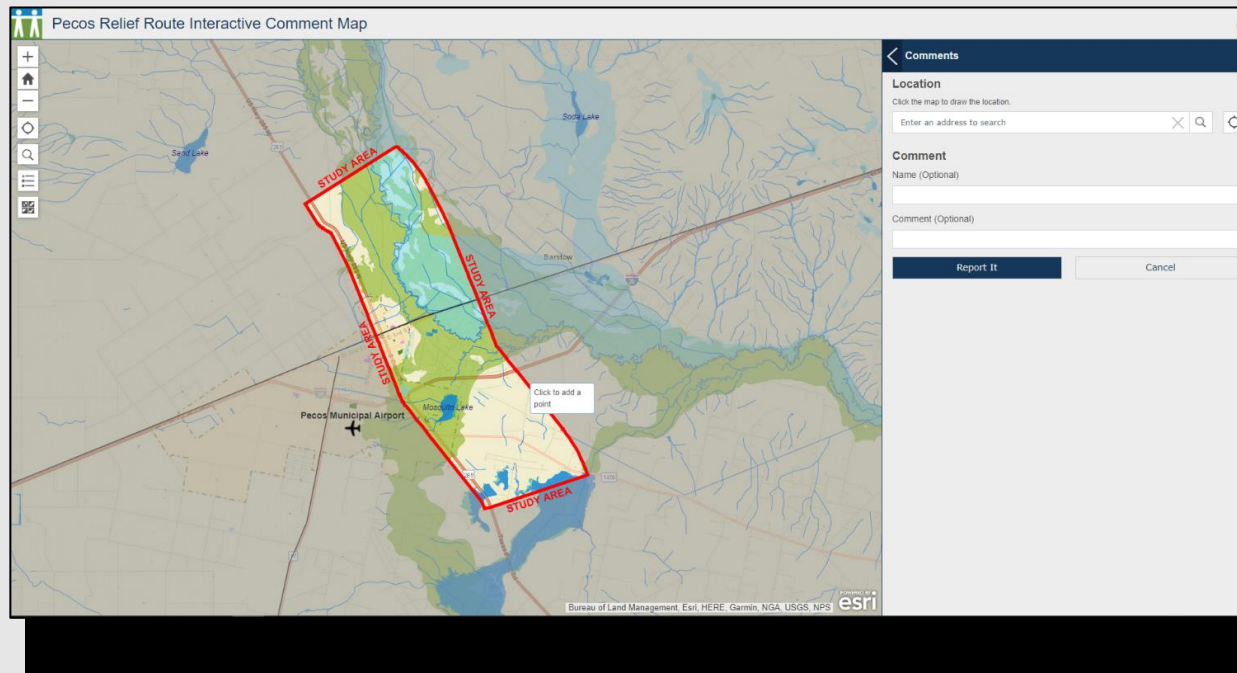
Interactive comment map

WE WANT YOUR INPUT!

One of the ways for you to provide us input is to provide comments within the interactive comment map.

You can access the online interactive comment map at this station.

Feel free to explore the map and provide multiple comments at your convenience.



DETAILED DIRECTIONS FOR LEAVING A COMMENT

STEP ONE: To access the online interactive comment map, click on the link in the TxDOT.gov virtual public meeting web page or Virtual Room.

STEP TWO: Review the map

Please review the instructions popup window using the scroll bar. Click the X in the top right corner of the popup window to close the window. Then, you will see an interactive map on the left and comments on the right. You can zoom in and click through the map to see locations, streets, and other participant's comments. To change the map background, click on the basemap gallery button on the left side of the screen to change the background to aerial imagery, streets, topographic, or other map background options. Click on the legend button on the left side of the screen to view a map legend.

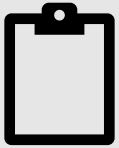
STEP THREE: To leave a comment:

- Click "submit comment" on the right side in orange.
- You should see a comment form with a prompt to indicate a location for your comment. A location can be provided by clicking on the map at the spot where you would like to leave your comment.
- Once the location field has been populated, please leave a detailed comment within the comment box.
- Once your comment is completed, click "report it." Doing so will send the comment to TxDOT.
- Repeat these steps to leave additional comments if you wish.

GIVE US YOUR INPUT

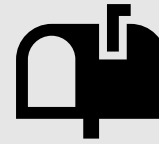
TxDOT would like to know your thoughts on:

- Project goals and objectives
- Mobility, connectivity and safety concerns on US 285 through Pecos
- Proposed design concept under consideration
- Environmental constraints we may have missed
- Anything else you'd like to share



ONLINE COMMENT FORM

Please access on the TxDOT.gov virtual public meeting web page or Virtual Room



MAIL

Atkins
Attn: Pecos Relief Route
11801 Domain Blvd., Suite 500
Austin, TX 78758

Send a letter or print out the comment form available in the downloads section and mail to the address above.



INTERACTIVE COMMENT MAP

Please access on the TxDOT.gov virtual public meeting web page or Virtual Room



EMAIL

PecosReliefRoute@gmail.com

**Please submit or
postmark comments by
Friday, June 11, 2021**



If you have any questions or need additional information, you may contact:

Elizabeth Story, Project Representative, (512) 342-3281, and PecosReliefRoute@gmail.com.

- **Consider, document and address public input**
- **Collect and analyze additional data**
- **Develop and refine relief route options**
- **Encourage and request additional public input at future public meetings**

TxDOT is committed to developing this project in collaboration with the community in a way that meets the project goals while minimizing community impacts.