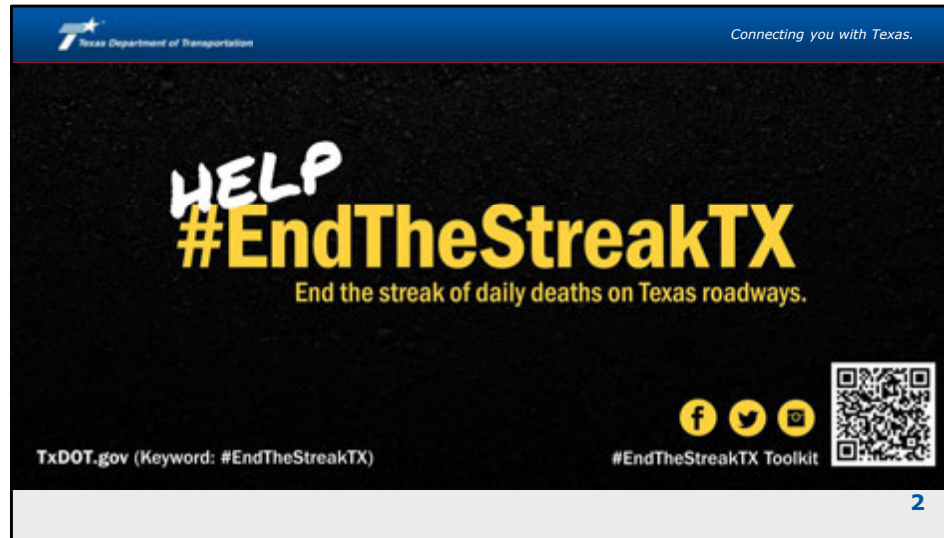


Welcome to the second Public Meeting for the Pecos East Relief Route project. Thank you for your time and attention today.

This virtual presentation is designed to mirror the information provided at the in-person meeting so that members of the public can experience this meeting virtually. You will have the opportunity to learn about the proposed project and provide comments. If you have questions about using this format, please contact us at 281-529-4172 for assistance.

This presentation is available for download on www.txdot.gov, keywords: Pecos East Relief Route along with the notice for this meeting, the proposed preliminary design schematics and other project-related information.



Before we begin, we would like to express our continued concern for safety by sharing TxDOT's "End the Streak" campaign. November 7, 2000, was the last deathless day on roadways in Texas. Texans can play a major role in ending fatal crashes with a few simple driving habits: wear seatbelts, drive the speed limit, put away the phone and other distractions and never drive under the influence of alcohol or drugs. So please do your part and share this message with your friends and family.



Texas Department of Transportation Connecting you with Texas.

Project location

Project limits
US 285 north of Pecos to
US 285 south of Pecos on the east side

Length
Approximately 10 miles

Location
Reeves County



3

Now, for a brief project overview. The proposed relief route would be approximately ten miles long and provide an alternate route for US 285 through traffic around the east side of Pecos. The alignment would cross over FM 1216 and the Union Pacific Railroad, connect to Business 20, IH-20 and FM 1450 before reconnecting with US 285 south of Pecos.

While a proposed route has been identified and is shown on this slide, the project is still in the design phase and no final decisions have been made regarding the relief route's location.

Project description

- Four-lane divided highway
- One-way frontage roads in each direction
- Interchanges at major intersections
- Bicycle and pedestrian shared use paths



Proposed Typical Section

4

The proposed project would include a four-lane divided highway, with two mainlanes and two frontage road lanes in each direction with access points at major intersections. The project would also include bicycle and pedestrian shared use paths.

Connecting you with Texas.

Project goals

<p>Increase mobility</p> <ul style="list-style-type: none"> ▪ Significant increase in traffic on US 285 ▪ Increased travel times through Pecos ▪ Delays due to at-grade railroad crossing 	<p>Improve safety</p> <ul style="list-style-type: none"> ▪ Crash rates twice as high ▪ 52% of crashes were intersection related ▪ 32% involved trucks or buses ▪ 46% were during peak traffic hours <p><i>Data taken from 2022 TxDOT CRIS</i></p>	<p>Improve connectivity</p> <ul style="list-style-type: none"> ▪ Commercial truck traffic - 20-40% ▪ The current route is unreliable and inefficient for energy sector traffic ▪ There is not currently an alternate route north and south
---	--	--

Commercial motor vehicle (CMV) traffic in 2021 varied from 20-40% along US 285 in the study area. Much of the CMV traffic is associated with the growing energy sector and will likely increase given the forecasted traffic growth. Texas A&M Transportation Institute reports that CMV crashes at intersections where speeding is involved have a 170% greater injury/fatality risk per crash. Therefore, shifting truck traffic from US 285 to the Relief Route would certainly improve safety in the area.

5

The Pecos East Relief Route would address a set of transportation needs unique to the US 285 corridor in the Pecos area.

Traffic volume on US 285 through Pecos has significantly increased over the past several years, resulting in increased congestion and reduced safety. Much of the increase in traffic on US 285 comes from commercial energy sector trucks traveling through Pecos. As oil and gas development continues in the Permian Basin, the level of related truck traffic is anticipated to increase. The proposed relief route is projected to carry approximately 25,000 vehicles per day by 2046 and is expected to reduce traffic on US 285 through town.

Most crashes occur within the Pecos city limits and are about twice as high as the statewide average crash rates for similar corridors. 52% of these crashes were intersection-related, 32% involved trucks or buses and 46% were during peak traffic hours.

Commercial truck traffic makes up 20-40% of traffic along US 285 through Pecos. This would create a more reliable

and efficient route for energy sector traffic. The design team has focused on the requirements for heavy trucks when designing the Pecos East Relief Route.

Project outreach

- Virtual public meeting #1 – Wednesday, May 26, 2021
- Stakeholder meeting – Thursday, May 27, 2021



To learn more about the information provided and feedback received, scan this QR code.

6

A relief route around Pecos has been considered for many years. Project constraints and goals were considered and described at our first public meeting on May 26, 2021 and our stakeholder meeting on May 27, 2021. To learn more about the information provided and feedback received at those meetings you can scan the QR code shown on this screen.

Funding and estimated construction cost

- Available funding
 - \$10M Category 12 funds (August 2021 UTP)
- Construction estimate
 - \$110M


The state has \$10M in Category 12 funds for this project. The preliminary construction estimate is currently at \$110M.

Texas Department of Transportation Connecting you with Texas.

Environmental constraints

Critical environmental constraints include:

- Oil and gas wells and pipelines
- Pecos River
- Floodplains
- Wastewater treatment plant
- Mosquito Lake



The map displays the Pecos River area with various environmental and community constraints highlighted in different colors. A legend on the right side of the map lists these constraints, including floodplains, wetlands, and other sensitive areas. The map also shows the Pecos River and surrounding infrastructure.

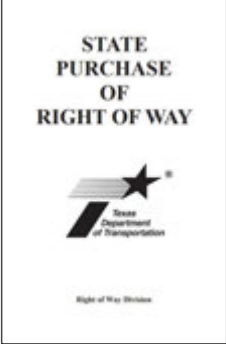

8


During the past year TxDOT has further analyzed the preliminary environmental constraints within the initial study area presented at the first virtual public meeting in 2021. Preliminary analyses with the aid of public input found the critical environmental constraints for the corridor and identified on this slide to be: oil and gas wells and pipelines, the Pecos River and floodplain, the City of Pecos' Water and Wastewater treatment plants and Mosquito Lake. As the proposed project is further refined, the environmental process will continue along with in-depth analyses and field studies to assess potential impacts.

The environmental constraints map can be found on the meeting webpage.

Texas Department of Transportation *Connecting you with Texas.*

Right-of-way acquisition





This QR code will take you to the right-of-way and other land acquisition page on txdot.gov.

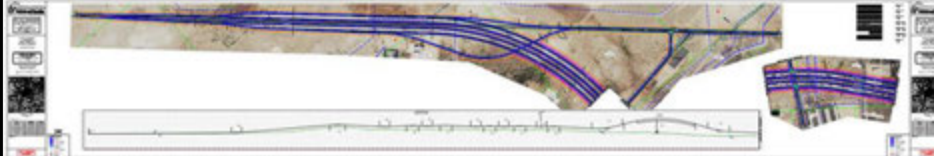
9

As a reminder, no final decisions have been made regarding the relief route's location, design, or right-of-way footprint. TxDOT will coordinate with individual property owners, as needed, through its right-of-way acquisition process, following the Federal Uniform Relocation and Real Property Acquisition Policies Act.

Scan this QR code to learn more about the acquisition process.

Texas Department of Transportation Connecting you with Texas.

Draft schematic

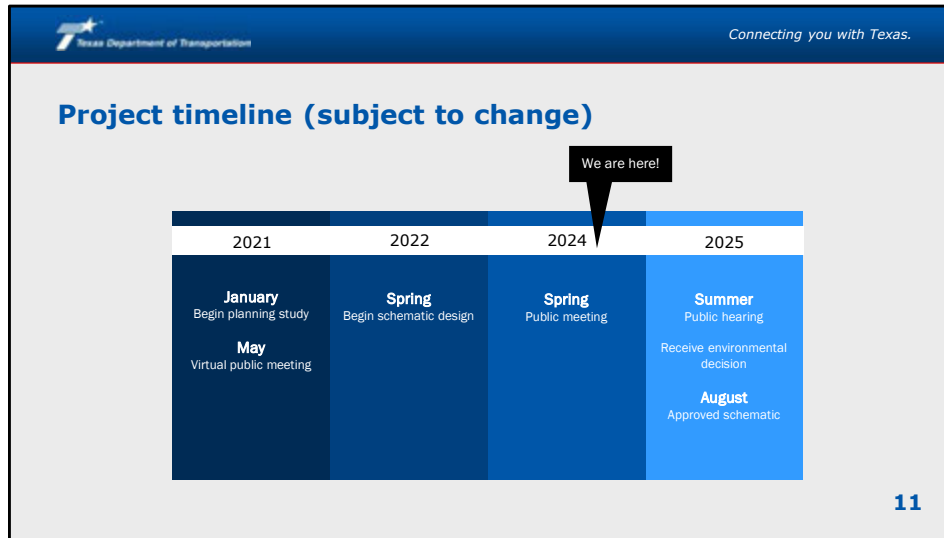


The draft schematic can be found on the meeting webpage.


10

Using the proposed typical section and keeping in mind the environmental constraints and potential right-of-way acquisition and displacements, a best-fit route around the east side of Pecos was designed. Schematic roll plots were drafted to detail this possible route, highlighting interchanges with US 285 to the north, Business 20 and the Union Pacific Railroad, IH 20, and US 285 to the south.

The draft schematic can be found on the meeting webpage.






This slide shows the project timeline, including next steps. Following this public meeting, TxDOT will continue developing the detailed schematic design, environmental studies, a public hearing in early 2025 and environmentally clearing the project in summer 2025. Final design and construction would occur after that point, as funding becomes available. Please note that this timeline is subject to change.


Connecting you with Texas.

How to comment

We appreciate your feedback! Visit www.txdot.gov, keyword search "Pecos East Relief Route" for additional project information and downloads.

		
Comment card	Email comments	Mail-in comments
Leave written comments at in-person event	Jenelle.Romero@atkinsrealis.com	AtkinsRéalis Attn: Pecos Relief Route PM #2 11801 Domain Blvd, Suite 500 Austin, TX 78758

All comments must be received by Thursday, June 20, 2024, to be included in the official record of this meeting. **12**

To view any of the meeting materials you saw here today, to download a comment card, or to access our interactive comment map, simply go to www.txdot.gov and use the keyword search function at the top right of the webpage. In this box enter the keywords "Pecos East Relief Route".

Your input is valuable for moving this project forward. If you have comments regarding any of the documents, exhibits, or content you've seen today, please submit them using one of the methods listed on this slide. For your comment to be included in the official record, it must be submitted on or before Thursday, June 20, 2024.

THANK YOU!

Thank you for your time. Please stay safe and take care. This concludes the virtual public meeting.