

# TxDOT RURAL TIP

2027 – 2030 Odessa District

# Welcome!

Welcome to the virtual public meeting for the Odessa District's 2027 to 2030 Rural Transportation Improvement Program, also known as the Rural TIP. I'm Maryann Cedillo, the public information officer for the Odessa District. Thank you for joining us today to learn more about the projects to be included in the upcoming 2027 to 2030 Rural TIP.

## Agenda

- |  |   |
|--|---|
| <b>01</b>   Safety Minute  | <b>05</b>   How Projects are Selected for the Rural TIP |
| <b>02</b>   Odessa District and its Boundaries                       | <b>06</b>   Projects by County                          |
| <b>03</b>   The Rural Transportation Improvement Program (Rural TIP) | <b>07</b>   Funding                                     |
| <b>04</b>   How the Rural TIP Impacts You                            | <b>08</b>   Next Steps                                  |

2027 – 2030 Rural TIP

2

Today we will review the counties in the Odessa District and all the roads under the district's care. We will also review the basics of what the Rural TIP is and why is it important for you to be here with us today. We will explain how the projects included in the program are selected.

This virtual meeting provides you an opportunity to review all the projects the Odessa District has included in the 2027 to 2030 program.

We will also explain funding to help answer where the money to pay for these projects comes from and how it gets distributed.

Lastly, we will outline all the options you have to comment on these projects and their priority.

# HELP MAKE TEXAS SAFER FOR EVERYONE

## DRIVE *like a* TEXAN.

Kind. Courteous. Safe.

[DriveLikeATexan.com](http://DriveLikeATexan.com)



*Drive like a Texan* is all about saving lives. It's a reminder for everyone in Texas to treat each other with a little bit of the kindness, respect, and neighborly spirit we're famous for, especially on the road. By showing courtesy and care behind the wheel the same way we would in person, we can make our roads safer for all.

### **Kind**

It's that simple. Treat others the way you want to be treated. Say thanks by giving a small wave, or just a friendly nod.

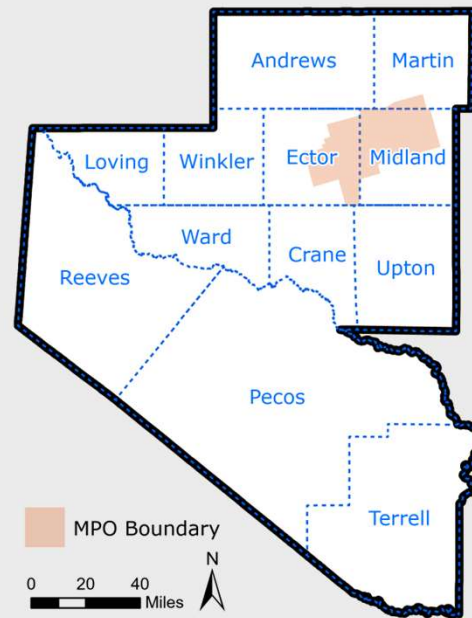
### **Courteous**

Courtesy isn't just about being polite in person. Show respect by letting others merge, giving plenty of space, and practicing patience on the road. Small actions save lives.

### **Safe**

The most important part of any journey is arriving safely. Not only do you keep yourself safe, but you also help protect every driver, passenger, biker, and pedestrian sharing the road.

## District Boundaries



Odessa District

2027 – 2030 Rural TIP

The Odessa District includes all of the counties shown in the map. Projects included in the 2027 to 2030 Rural TIP are located in Andrews, Martin, Midland, Pecos, Reeves, Terrell, Upton, Ward and Winkler counties.

## Rural Transportation Improvement Program (Rural TIP)

### THE RURAL TIP

includes both grouped projects and individually listed projects that include added-capacity projects and regionally significant projects to be funded outside of MPO boundary, and within a TxDOT district during the next four years, including those eligible for federal funding.

It can include projects for:



**A Rural TIP project is anticipated to be funded within the next four years.**

**It shows regional agreement (community-region-state) on the need of a project.**

2027 – 2030 Rural TIP

5

The Rural TIP is a list of local projects to be funded in a TxDOT district over the next 4 years. This means that all projects included in the list are expected to be underway within 4 years following its approval. These are the projects you can expect to go to contract in the near future!

It is multimodal; which means that it can include projects relating to highways, bicycle and pedestrian facilities, transit services, and freight projects.

Rural TIP is meant to show regional agreement on the need and priority of a transportation project, so all parties involved can be sure they are making the best investment for the community. It is also expected to be consistent with the projects and objectives included in the regional Long Range Transportation Plans, to ensure that all agencies are working towards the same goal.

The Rural TIP is a part of the Statewide Transportation Improvement Program (STIP). Because the program's rules are established by Federal law, no project can receive federal funding unless it is listed in the Rural TIP!

## How the Rural TIP Impacts You

The Rural TIP process includes opportunities to provide input on the priority of major projects that are listed on it.

Local and small projects around your community dealing with safety and access also get funding through the Rural TIP, for example:

- Road expansions
- Sidewalks
- Bike lanes
- Pavement repair or maintenance
- New or improved signals
- Turning lanes

**You know  
your  
community  
best!**

Tell us what  
projects  
should come  
first and why

It is important for you to participate because funding secured by this process is intended to address your communities' most immediate needs. By providing comments on the projects included, you are helping us identify regional priorities, and you are helping TxDOT be more effective with your money and ensuring that investments are made appropriately.

## How Projects are Selected for the Rural TIP

Projects are identified and selected by evaluating existing and future needs based on current conditions and projections, statewide and regional plans, and public input regarding transportation priorities.



For Example:

2027 – 2030 Rural TIP

7

Rural Transportation Organizations, Metropolitan Planning Organizations and local governments are responsible for selecting projects within their boundaries.

TxDOT, through the District office, is responsible for selecting all projects relating to the state transportation system and other national roadways. This includes Interstates, State and US Highways but most importantly this can also include the Farm-to-Market and Ranch-to-Market roads you use every day. The projects you will review today should respond to local needs!

It is our responsibility to give you the opportunity to provide input on which projects should be advanced.

## View Rural TIP Projects

Public meeting materials

Rural TIP Project Lists and Maps

- [Andrews County](#)
- [Martin County](#)
- [Midland County](#)
- [Pecos County](#)
- [Reeves County](#)
- [Terrell County](#)
- [Upton County](#)
- [Ward County](#)
- [Winkler County](#)
- [Districtwide](#)
- [Interactive map](#)

Click on webpage to view PDFs

Interactive Map

2027 – 2030 Rural TIP

8

All projects included in the 2027 to 2030 Rural TIP for the Odessa District can be viewed by downloading project lists and maps under the public meeting materials on this webpage. An interactive map is also available so you can zoom in and click on projects to learn more.

## Funding

**The Rural TIP is a fiscally constrained list of projects that functions as a budgeting tool for our district.**

Funds can come from:

- **Federal Government**
  - **Majority through** the Federal Highway and Transit Administrations
- **State**
  - **Majority through TxDOT's** Unified Transportation Program funding categories
- **Region**
- **Local**

**2027 – 2030 Rural TIP**

**9**

The Rural TIP functions as a budget for the District. Therefore, it is fiscally constrained. Like the budget of a household, the Rural TIP has to be realistic about the amount of money available to cover all the needs. Frequently we identify more improvements than we have money to implement. This means prioritizing according to those items that are most necessary.

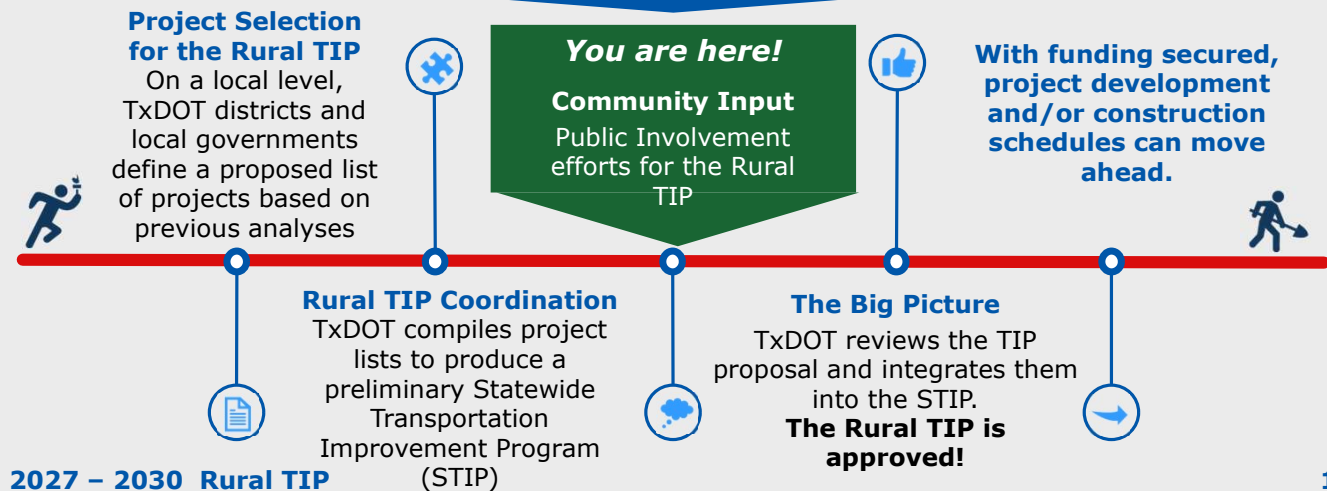
We've discussed the list, but where is the money coming from? Funds can come from multiple sources:

- 1) The Federal Government, through the establishment of the Infrastructure Investment and Jobs Act (IIJA), the federal government allocates these funds through the processes established by the Federal Highway and Transit Administrations.
- 2) TxDOT, like the Federal Government, also allocates a section our budget for these projects through the Unified Transportation Program's 12 funding categories.
- 3) Region – regional entities will also allocate funding to certain transportation projects.

And 4) the local governments. Once the need has been identified and the amount of federal monies has been defined, the Rural TIP helps local governments assess the funding requirements to match those of the federal and state government and their capacity to meet them.

## Next Steps

### In the Rural TIP Process



This timeline illustrates the Rural TIP process and where we are right now.

The STIP is an accumulation of all 24 district’s Rural TIPs, and the 24 Metropolitan Planning Organization’s TIPs, and additional Statewide Programs, for example: Texas Parks and Wildlife Program, Federal Land, Tribal Projects, Statewide Transit, etc. The timeline above shows where the Rural TIP process fits into this larger effort. Once the STIP is approved by the Federal government, the projects are considered approved.

## Next Steps (Continued)

### How to provide comments:

**1. Mail a comment to:**

Texas Department of Transportation  
Odessa District, Attn: Rural TIP  
3901 E. Hwy. 80, Odessa, TX 79761

**2. Or email a comment to:**

Gabriel.Ramirez@txdot.gov, Subject: Rural TIP

Remember to submit your comments by **Monday, April 20, 2026**, to be included  
in the official summary of this meeting.

Now that you are familiar with the Program, we want to hear what you think. Please fill out a comment card and mail it back to us at Texas Department of Transportation, Odessa District, Attention Rural TIP, 3901 East Highway 80, Odessa, TX 79761.

You can also email your comments to: Gabriel.Ramirez@txdot.gov

Comments must be received by **Monday, April 20, 2026**.